

July 2021

NOTICE TO BUILDING OCCUPANTS AND PARENTS

**NOTIFICATION OF INSPECTION FOR ASBESTOS CONTAINING
MATERIALS IN PUBLIC SCHOOLS**

The Environmental Protection Agency (EPA) has issued a final rule, 40 CFR Part 763, Asbestos Containing Material in schools, commonly referred to as AHERA. This rule requires all Local Education Agencies (LEA's) to identify asbestos containing materials (ACM) in their school buildings and to take appropriate actions to control release of asbestos fibers.

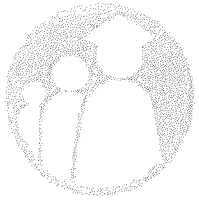
All inspections for Janie Howard Wilson Elementary School have been completed and a Management Plan describing the results of the inspection and the action plan to control any asbestos found during the inspection, where applicable, has been submitted to the Governor for approval. A copy of this plan is located in the administrative office of this school and at the District School Board of Polk County Maintenance Department and is available for review upon request.

If there are any questions, please call 863-678-4211.

Thank you,

Linda J. Ray, Ed.D
Principal

Kim Griffiths, M.S
Assistant Principal



BOARD MEMBERS

Lori Cunningham
Board Chairman

William Allen
District 1

Sarah Fortney
District 3

Sara Beth Reynolds
District 4

Kay Fields
District 5

Lynn Wilson
District 6

Lisa Miller
District 7


C. Wesley Bridges, II
General Counsel


ADMINISTRATION

Frederick R. Heid
Superintendent

August 3, 2021

TO: Principals

FROM: Dwight Marsh, Acting Senior Coordinator
Maintenance Services 

THRU: Angela Usher, Assistant Superintendent
Facilities & Operations 

RE: Asbestos Hazard Emergency Response Act
"Notice to Building Occupants and Parents"

We are required by the federal regulation Asbestos Hazard Emergency Response Act (AHERA) to inspect all schools that have asbestos containing materials (ACM). This regulation requires that schools containing asbestos materials be inspected initially and then re-inspected every three years thereafter. Each school should have a copy of all inspection booklets in the school's Asbestos Management Plan File.

In addition, the Environmental Protection Agency (EPA) requires that each year the Local Education Agency (LEA) notify in writing to parents, teachers, and students of the availability of Management Plans (results of inspection) for asbestos identified in each school. Pursuant to section 40 CFR 763.93(e) (12) (g) (4), this notice shall be dated and identified by school/facility.

Subsequent EPA guidance suggest that the most acceptable form of notification is to have the notice placed on school letterhead, dated, signed by the school administrator and issued to each student and parent, i.e. **school newsletter**. Specific text is required in this notice. A copy of the text is attached for you in English and Spanish and is also available at <http://thehub.polk-fl.net/docs/> Click on Environmental Services then Asbestos. **Insert your school name where indicated** then prepare and issue the notice as suggested. Include a copy of the notice in your school's Asbestos Management Plan File and **forward a copy to Tracy Hannah, Maintenance Services via e-mail (preferably), fax (863-519-3738) or through the courier to Route E no later than October 15, 2021.**

cc: Frederick R Heid, Superintendent

STUDENTS FIRST

School Board of Polk County Schools
ACM Schools Built Prior To 1986

1)	Alta Vista Elementary	801 Scenic Highway	Haines City	33844	421-3235
2)	Alturas Elementary	4 th & Oak	Alturas	33820	519-3917
3)	Auburndale Central Elem.	320 Lemon St.	Auburndale	33823	965-5450
4)	Auburndale Senior	1 Bloodhound Trail	Auburndale	33823	965-6200
5)	Babson Park Elem.	815 N. Scenic Hwy.	Babson Park	33827	678-4664
6)	Bartow Elem. Academy	590 S. Wilson Av. 7410	Bartow	33830	534-
7)	Bartow High	1270 S. Broadway	Bartow	33830	534-7400
8)	Bartow Middle & Compass	550 E. Clower St.	Bartow	33830	534-7415
9)	Bethune Academy	900 Avenue F	Haines City	33844	421-3334
10)	Boone Middle	225 S. 22 nd Street	Haines City	33844	421-3302
11)	Boswell Elem.	2820 K-Ville Ave.	Auburndale	33823	499-2990
12)	Brigham Academy	601 Avenue C, SE	Winter Haven	33880	291-5300
13)	Caldwell Elem.	141 Dairy Rd. 5470	Auburndale	33823	965-
14)	Carlton Palmore Elem.	3725 Cleveland Heights Blvd. 648-3510	Lakeland	33813	
15)	Churchwell Elem.**	8201 Park Byrd Rd.	Lakeland	33810	853-6011
16)	Cleveland Court Elem	328 E. Edgewood Dr.	Lakeland	33803	499-2929
17)	Combee Academy	2805 Morgan Combee Rd.	Lakeland	33801	499-2960
18)	Crystal Lake Elem.	700 Galvin Dr.	Lakeland	33801	499-2966
19)	Crystal Lake Middle	2410 N. Crystal Lake Dr.	Lakeland	33801	499-2970
20)	Daniel Jenkins Academy	701 Ledwith Ave.	Haines City	33844	421-3267
21)	Davenport Community Campus	8 Palmetto St. 3247	Davenport	33837	421-
22)	Denison Middle	400 Avenue A, SE 5353	Winter Haven	33880	291-
23)	Dixieland Elem.	416 W. Ariana St. 2930	Lakeland	33803	499-
24)	Don Woods Center	213 Lake Ave.	Dundee	33838	421-3325
25)	Doris A. Sanders Center	1201 Enchanted Dr. 499-2980	Lakeland	33801	
26)	Dundee Elem.	215 Frederick Ave. 3316	Dundee	33838	421-
27)	Eagle Lake Elem.	400 Crystal Beach Rd. 5357	Eagle Lake	33839	291-
28)	East Area Adult	300 E. Bridgers Avenue 965-5475	Auburndale	33823	
29)	Eastside Elem.	1820 E. Johnson Ave. 3254	Haines City	33844	421-
30)	Elbert Elem.	205 15 th St., NE 5364	Winter Haven	33881	291-
31)	ESE NE (Old Fruitland Park)	690 N. Third St. 5566	Lake Alfred	33850	965-
32)	Floral Avenue Elem.	1530 S. Floral Ave.	Bartow	33830	534-7420
33)	Ft. Meade Middle/Sr.	700 Edgewood Dr.	Ft. Meade	33841	285-8174
34)	Frostproof Elem.	118 W. Third St. 7802	Frostproof	33843	635-
35)	Frostproof Middle/Sr.	1000 N. Palm St.	Frostproof	33843	635-7809
36)	Garden Grove Elem.	4599 Cypress Gardens Rd.	Winter Haven	33884	291-5396
37)	Garner Elem.	2500 Havendale Blvd.	Winter Haven	33881	965-5455

77)	Purcell Elem.	305 First Ave., NE	Mulberry	33860	701-1061
78)	Ridge Career Center	7700 State Rd. 544	Winter Haven	33881	419-3066
79)	Rochelle School of the Arts	1501 MLK, Jr. Ave.	Lakeland	33805	499-2810
80)	Roosevelt Academy	115 "E" Street	Lake Wales	33853	678-4252
81)	Scott Lake Elem. 3520	1140 E. State Rd. 540A	Lakeland	33813	648-
82)	Sikes Elem.	2727 Shepherd Rd.	Lakeland	33811	648-3525
83)	Snively Elem.	848 Snively Ave.	Winter Haven	33880	291-5325
84)	Southwest Elem.	2650 Southwest Ave.	Lakeland	33803	499-2830
85)	Southwest Middle 2840	2815 S. Eden Parkway	Lakeland	33803	499-
86)	Spook Hill Elem.	321 E. North Ave.	Lake Wales	33853	678-4262
87)	Stambaugh Middle 5494	226 N. Main St.	Auburndale	33823	965-
88)	Stephens Elem. 7455	1350 N. Maple Ave.	Bartow	33830	534-
89)	Traviss Career Center 2700	3225 Winter Lake Rd.	Lakeland	33803	499-
90)	Union Academy	1795 E. Wabash St.	Bartow	33830	534-7435
91)	Wahneta Elem. 5392	Fourth Street, E.	Winter Haven	33880	291-
92)	West Area Adult**	604 S. Central Ave.	Lakeland	33815	499-2727
93)	Westwood Middle	3520 Avenue J, NW	Winter Haven	33881	965-5484
94)	Winston Academy	3415 Swindell Rd.	Lakeland	33810	499-2890
95)	Winter Haven High	600 Sixth Street, SE	Winter Haven	33880	291-5330

Aa Bb Cc Dd Ee Ff G

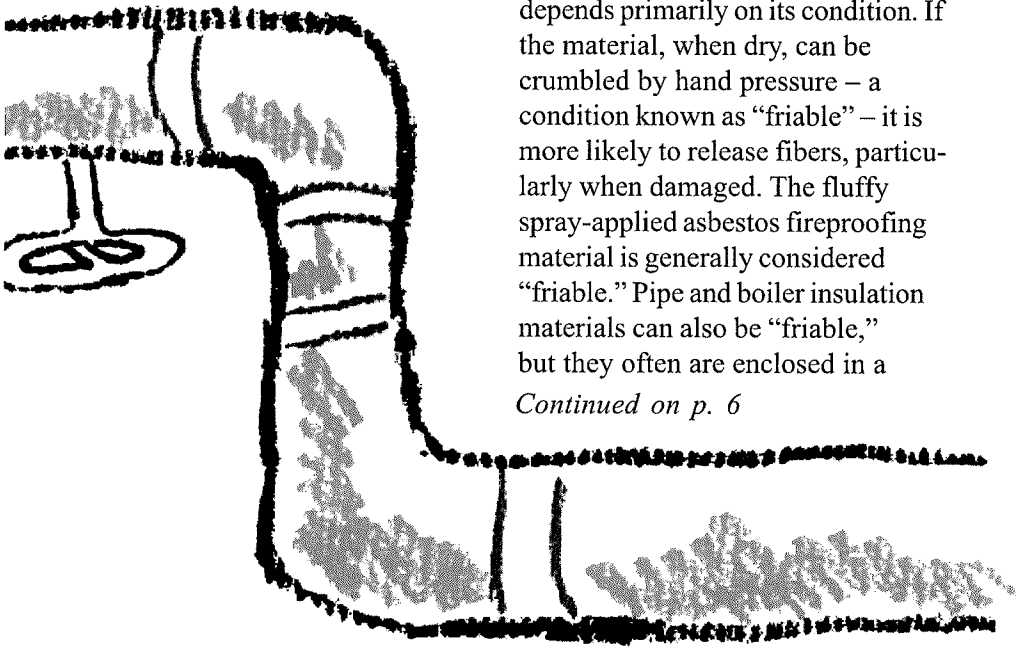
these products varies widely, from less than 1 to 100 percent, depending on the use. Pipe and boiler insulation typically contains more asbestos than other building materials. The precise amount of asbestos in a product cannot always be determined from labels – since most products used in the past were not labeled – or by asking the manufacturer. Instead, positive identification of asbestos requires analysis of samples by a qualified laboratory.

When Is Asbestos a Problem?

Intact and undisturbed asbestos materials generally do not pose a health risk. Asbestos materials, however, can become hazardous when, due to damage or deterioration over time, they release fibers. If the fibers are inhaled, they can lead to health problems.

The potential for an asbestos-containing material to release fibers depends primarily on its condition. If the material, when dry, can be crumbled by hand pressure – a condition known as “friable” – it is more likely to release fibers, particularly when damaged. The fluffy spray-applied asbestos fireproofing material is generally considered “friable.” Pipe and boiler insulation materials can also be “friable,” but they often are enclosed in a

Continued on p. 6



Aa Bb Cc Dd Ee Ff G

protective casing which prevents fiber release unless the casing is damaged. Some materials, which are considered “nonfriable,” such as vinyl-asbestos floor tile, can also release fibers when sanded,

sawed or otherwise disturbed. Materials such as asbestos cement pipe can release asbestos fibers if they are broken or crushed when buildings are demolished, renovated or repaired.

What Are the Proper Methods for Managing Asbestos?

Most asbestos-containing material can be properly managed where it is. In fact, asbestos that is managed properly and maintained in good condition appears to pose *relatively little risk* to students and school employees. Accordingly, the AHERA schools rule rarely requires the removal of asbestos materials.

Proper asbestos management begins with a comprehensive inspection by qualified, trained and experienced inspectors, accredited through an EPA or state-approved training course. Inspecting the condition of asbestos materials – initially with AHERA-accredited inspectors and at least semi-annually with trained custodial or maintenance staff – is extremely important so that changes in the material’s condition, such as

damage or deterioration, can be detected and corrected before the condition worsens. Sometimes normal school or maintenance activities can damage asbestos material and cause fiber release, particularly if the material is “friable.” A thorough initial inspection and regular surveillance can prevent accidental exposure to high levels of asbestos fibers.

The methods (see page 7), in AHERA terminology, are asbestos “response actions.” The last three methods of response actions – encapsulation, enclosure, and removal – and sometimes the second method – repair – must be done by accredited asbestos professionals.

The final response action, asbestos removal, is generally necessary only when the material damage is extensive and severe,

Aa Bb Cc Dd Ee Ff G

oversee the asbestos contractor's work to make sure the removal is conducted safely.

Only an AHERA-accredited management planner – an asbestos professional with proper training, qualifications, and experience – is

authorized to advise school officials on which response action is appropriate for a particular situation. The final selection of the proper method is up to school officials after they receive the advice of the school's accredited management planner.

What Should My School & School District Be Doing?

Under the AHERA schools rule, each local education agency (LEA, which means a school district or private school) must take the following asbestos-related actions:

- 1** Designate and train a person to oversee asbestos-related activities in the school system.
- 2** Inspect *every* school building for “friable” and “nonfriable” asbestos-containing building materials.
- 3** Prepare a management plan for managing asbestos and controlling exposure in each school.
- 4** Consult with accredited inspection and management professionals

to identify and carry out whatever asbestos actions are necessary and appropriate to protect health and the environment. These actions or methods must be documented in the management plan.

- 5** Notify the public about the asbestos inspection and the availability of the asbestos management plan for review.
- 6** Use only properly accredited persons to conduct inspections, to develop the asbestos management plan, and to carry out the appropriate response actions.
- 7** Keep records of all asbestos related activities in the plan and make them available for public review.

What Can I Do to Help?

As a parent, teacher, student, service worker or other school employee, the most important thing you can do first is to learn about your school's asbestos activities. As you do so, remember that *the mere presence of asbestos in a school doesn't necessarily mean that the health of its occupants is endangered*. Again, asbestos that is managed properly and maintained in good condition poses relatively little risk. Federal regulations do not require the removal of all friable asbestos from schools until the building is demolished. In fact, during the life of the building, other methods of dealing with the material are often preferable to removal.

In those cases when removing asbestos *is* determined to be the appropriate

decision, the work must be done under strict controls by trained, qualified and experienced asbestos professionals who are properly accredited under AHERA.

Step One: Awareness

Your first step is to make sure your school has prepared an asbestos management plan as required by AHERA. By becoming familiar with this plan, you will know if asbestos materials are in the school, what plans the school has for managing this asbestos, and when these activities are scheduled to occur.

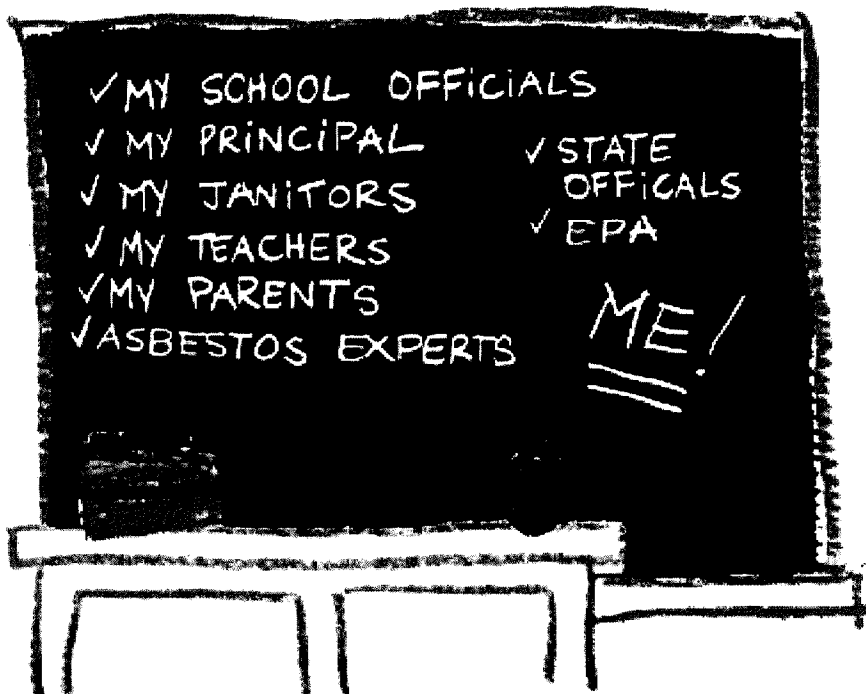
Aa Bb Cc Dd Ee Ff G

Who Is Responsible for Making AHERA Work?

All of us are responsible. Making the AHERA schools rule work to protect the nation's school children and employees is a joint responsibility of the LEA and its officials, school employees, parents, students,

federal and state governments, and asbestos control professionals.

EPA conducts compliance inspections of a sample of schools each year to make sure they are obeying the law. The Agency is responsible for insuring that schools comply with AHERA and it will investigate reported violations. Since the AHERA schools rule is intentionally designed to involve parent, teacher and other school employee organizations, it is important that *you* work with your school to make sure that its asbestos program is properly conducted.



groups worked with EPA in developing the AHERA schools rule, and some have started their own educational efforts to improve understanding of the AHERA requirements and proper asbestos control practices.

The EPA Toxic Substances Control Act (TSCA) Hotline is available to answer your questions about the new AHERA regulations and about asbestos in general. You can obtain a variety of information by calling the TSCA Hotline at (202) 554-1404 or the asbestos hotline at (800) 471-7127. You can also visit our website at http://www.epa.gov/asbestos/asbestos_in_schools.html.

Finally, EPA has an asbestos ombudsman to help citizens with asbestos-in-schools issues, questions, and complaints. This office can be reached through a toll-free number at (800) 368-5888.



Office of Pollution Prevention and Toxics

The ABCs Of Asbestos In Schools

Aa Bb Cc Dd Ee Ff Gg Hh Ii Jj

Today's Lesson:

Asbestos

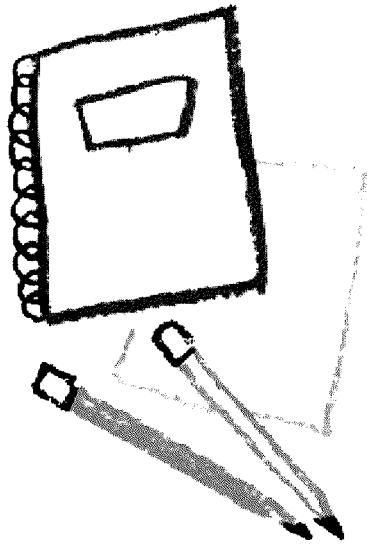
The Asbestos Issue

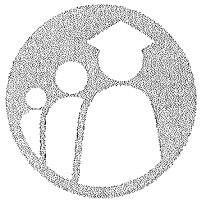
Asbestos fibers can cause serious health problems. If inhaled, they can disrupt the normal functioning of the lungs. Three specific diseases – asbestosis, lung cancer, and another cancer known as mesothelioma – have been linked to asbestos exposure. These diseases do not develop immediately after inhalation of asbestos fibers; it may be 20 years or more before symptoms appear.

In general, as with cigarette smoking, the more asbestos fibers a person inhales, the greater the risk of developing an asbestos-related disease. The most severe health problems from asbestos exposure have been experienced by some workers who held jobs in industries such as shipbuilding, where they were exposed to very high levels of asbestos in the air. These employees worked directly with asbestos materials on a regular basis as a part of their jobs. Much uncertainty surrounds the risk from

exposure to low levels of asbestos fibers.

Nevertheless, the risk of school children being exposed to even low levels of asbestos is a concern. Acting on this concern, Congress passed the Asbestos Hazard Emergency Response Act (AHERA) in 1986 to protect school children and school employees from exposure to asbestos in school buildings. This pamphlet describes key parts of these federal asbestos requirements for schools.





**POLK COUNTY
PUBLIC SCHOOLS**

BOARD MEMBERS

Lynn Wilson
Board Chair
District 6

Billy Townsend
District 1

Lori Cunningham
District 2

Sarah Fortney
District 3

Sara Beth Reynolds
District 4

Kay Fields
District 5

Lisa Miller
District 7

C. Wesley Bridges, II
General Counsel

ADMINISTRATION

Jacqueline M. Byrd
Superintendent

April 8, 2020

Janie Howard Wilson Elem

Attn: Linda Ray

Re: Post-Job Asbestos Report

Enclosed is your report for the removal of approximately ½ SF per collar support and 1 LF of hot water pipe and 2 SF of black mastic coating on the conduit box in Building 01 Room 009 and Chase Area between rooms. **It is mandatory that an asbestos management folder is kept at your school and records are maintained for a period of 30 years.**

Please place this report with your other asbestos records and maintain them for 30 years.

If I can further assist you with this matter, please contact Maintenance Services at 863-534-0620 ext 514.

Thank you,

Rory Luce, Sr. Coordinator

Maintenance Services

STUDENTS FIRST



1915 S. Floral Ave.
Bartow, FL 33830



P.O. Box 391
Bartow, FL 33831



863-534-0500



polkschoolsfl.com