



Family Handbook

2023-2024



Dear Preschool Families,

Welcome to Page Unified Preschool! Thank you for choosing to partner with us to support the growth, development, and learning of your child. At Page Unified Preschool we believe that all children have the right to a childhood filled with love, self-worth, trust, exploration, discovery, creativity, and make-believe. We will work together to provide an environment that promotes confidence, teamwork, partnerships, compassion, and responsive learning.

At Page Unified Preschool, barriers to learning are removed to allow each student to participate fully in our program and feel equally valued. We unite with families to enable young children to realize their potential. In our program, all children with disabilities are educated in the same environment as neurotypical peers. Using a language-rich, play-based curriculum, our program is designed to meet the needs of the whole child, socially, academically, and emotionally as we celebrate childhood and make first learning experiences an exciting journey.

We are excited to work with you and your child to support growth and make memories.

Sincerely,

Penni Case
Preschool Director
928-660-2842
pcase@pageud.org

It is intended that all Page Unified School District handbooks comply with the policies established by the governing board of the Page Unified School District. In the event that anything in this handbook conflicts with current district policy, district policy will prevail.

TABLE OF CONTENTS

CONTACT INFORMATION	4
VISION AND MISSION STATEMENT	5
CALENDAR FOR 2022-2023	6
PRESCHOOL SCHEDULE	7
ENROLLMENT INFORMATION	8
SERVICES	9
TUITION/SCHOLARSHIPS	10
CURRICULUM AND ASSESSMENT	11
SCREENING AND REFERRALS	11
TRANSITIONS	12
FAMILY INVOLVEMENT	13
ATTENDANCE POLICY	13
ADMISSION AND RELEASE PROCEDURES	15
TRANSPORTATION	15
BEHAVIOR EXPECTATIONS	16
IMMUNIZATIONS	17
EMERGENCY PROCEDURES	17
POLICIES, RIGHTS AND RESPONSIBILITIES	18
EMPOWER PROGRAM	18
SIGNATURE PAGE	23

It is intended that all Page Unified School District handbooks comply with the policies established by the governing board of the Page Unified School District. In the event that anything in this handbook conflicts with current district policy, district policy will prevail.

Page Unified School District

PO Box 1927
Page, AZ 86040
(928) 608-4100

Superintendent – Bryce Anderson

Director of Exceptional Student Services – Penni Case

PRESCHOOL DEPARTMENT

Jillyn Anderson– Preschool Coordinator

Rene Frank – Preschool Secretary

Florisa Peshlakai-Preschool Teacher

Marilee Osterink- Preschool Teacher

Kristin Keisling- Preschool Teacher

Roselyn Nez- Preschool Teacher

Olga Gussidi - Teacher

– Speech-Language Pathologist

Alissa Jones – Physical Therapist

Preschool Website- pre.pageud.org

Page Unified School District Website- pageud.org

Preschool Schedule

Monday, Tuesday, Wednesday & Thursday

Morning session 7:30-11:15 Lunch at 10:45

Full Day 7:30-3:00 Lunch at 10:45

Page Unified Preschool

VISION

Every child, every family, every day, ready to succeed.

MISSION

We at Page Unified Preschool proactively reach out to children, families, and the community to establish a partnership. Together we will share and accept knowledge to support the success of all. We will actively enrich our knowledge to improve our craft and remove barriers to learning so that all students can participate fully in the curriculum.

Preschool Schedule

Times for the different activities vary between classes. Below is one example of a typical preschool schedule.

- 7:30 **Arrival** Students can arrive as early as 7:30am. Assistants meet students at the gate and take students to the playground.
- 8:00 **Free Exploration Time** (Children are playing at play centers, adults play among children modeling appropriate language and encouraging cooperative behavior)
- 9:00 **Circle Time –Large group** (Sing songs/finger plays/thematic songs, read and discuss story, explain centers)
- 9:45 **Recess** (Children are supervised on an enclosed playground by an adult.)
- 10:25 **2nd Circle Time** (Concept and phonemic awareness development, language lessons)
- 10:40 **Clean up/Lunch**
- 11:15 **Dismissal/Recess/Bathroom**
- 12:00 **Nap Time**
- 1:00 **Free Exploration Time** (Children are playing at play centers, adults play among children modeling appropriate language and encouraging cooperative behavior)
- 1:20 **Circle Time –Large group** (Sing songs/finger plays/thematic songs, read and discuss story, explain centers)
- 1:40 **Small Group Learning** (Children are divided into two groups. The lessons are designed to provide language, literacy, concept, or motor skills development.
- 2:00 **Student Plan Writing** Students will draw/write a plan based on center activity
- 2:15 **Center Time–** Students choose one of 6 centers; Literacy, Science, Art, Dramatic play, Blocks, Table Toys. Center activities are designed to develop language, concept development, problem solving, and independent working skills.
- 2:50 **Prepare to go home/ assistants take bus kids to bus.**
- 3:00 **Dismissal- Go Home**

Page Unified Preschool

P.O. Box 1927
450 S. Navajo Dr.
Page, AZ 86040
(928) 608-4173

Enrollment Information

Enrollment in Page Unified Preschool shall be granted without discrimination in regard to sex, race, color, creed, or belief. Children must be 4 years old by September, 1 of the current school year to enroll. Class sizes are limited to ensure an appropriate student-to-staff ratio. Availability is dependent on enrollment. Children may qualify under the following funding:

- Tuition
- Quality First Scholarship-income eligibility criteria
- IDEA Criteria-eligible based upon Child Find criteria

Priority will be given to those who are identified as most in need on our enrollment rubric. (Available upon request)

Waitlist

Once registration has exceeded our capacity, students with submitted applications that are complete will be placed on a waitlist. Students who are identified as most in need will be placed at the top of the waitlist. Each time an opening becomes available at the preschool we will contact the family of the student next on the list. If the parent declines the spot, it will be offered to the parent of the next student in line. Page Unified Preschool reserves the right to share our waitlist with our local preschools so that we can fill slots if available.

Program Enrollment Components

Typical Four Year Olds

Parents may enroll children who are four years old by September 1st. Typically developing four-year-olds serve as social and language role models for other children in the program.

Exceptional Student

Exceptional Student Services may be provided for three and four-year-old children. Parents may refer their child for a screening of developmental areas. If an evaluation finds

It is intended that all Page Unified School District handbooks comply with the policies established by the governing board of the Page Unified School District. In the event that anything in this handbook conflicts with current district policy, district policy will prevail.

developmental delays in speech/language, motor skills, social/adaptive skills, vision, hearing, or cognitive skills, services will be provided. Special Education Services provide an Individual Education Plan (IEP) that may include related services such as physical, occupational, or speech therapy, and/or vision, or hearing services. All Special Education referrals and evaluations involve parents in the decision process and the results remain in confidential records.

Continuum of Services

Each child with a disability has a right to a Free and Appropriate Public Education. The Individual Education Program (IEP) team determines what level of service the child needs in order to meet their goals. There are several levels of service and service models that the IEP team may consider from

Consultative services consist of the service provider working with the parent, teacher or other related service personnel to develop and monitor a therapeutic, developmentally appropriate individualized education program that is carried out by the regular teacher.

Itinerant services are provided in a regular education setting such as the Page Preschool classroom or a childcare center or Head Start program. The Early Childhood Special Education teacher and/or related service personnel provide services to the child within the context of their natural environment. This may be in the form of teacher consultation and direct intervention by the service providers.

Inclusive Preschool Special Education Classroom consists of an Early Childhood Special Education Teacher and related service providers working with the parent and child to develop a therapeutic, developmental, and/or pre-academic program that meets the child's needs. Related service personnel work with the child in the context of a preschool classroom or in individualized sessions based on the child's needs. More than 50% of the children in the classroom are typically developing children.

Self-Contained Preschool Special Education Classroom consists of an Early Childhood Special Education Teacher and related service providers working with the parent and child to develop a therapeutic, developmental, and/or pre-academic program that meets the child's needs. Related service personnel work with the child in the context of a preschool classroom or in individualized sessions based on the child's needs. More than 50% of the children in the classroom are children with special needs.

"Homebound" or "hospitalized" preschool instruction is designed for children unable to attend school due to illness, disease, accident, or other health conditions. The child's physician submits a medical certification form that the child is unable to attend regular classes due to chronic or acute health problems. The medical certification shall state the general medical condition, such as illness, disease or chronic health condition that is the reason that the pupil is unable to attend school.

It is intended that all Page Unified School District handbooks comply with the policies established by the governing board of the Page Unified School District. In the event that anything in this handbook conflicts with current district policy, district policy will prevail.

Discontinuation of services

When a child has made sufficient growth and no longer exhibits development delays that inhibit their progress, a meeting with the parents be called to exit the child from special education.

Tuition

Tuition is based on full-year enrollment and is paid in monthly installments. Tuition payments are due on the 15th of each month starting in August and going through May.

1. Children must be 4 years old by September 1st of the current school year.
2. Children must be able to take care of their own toiletry needs
3. Monthly tuition for the 7 hour/Day Program fee is \$440.00 due on the 1st of each month, starting in August and going through May. Full tuition payment is to be paid monthly regardless of holidays or absences. If the payment is not received by the 15th of the month, your child will not be able to attend, and your child's space will be filled immediately with another child. Payments can be delivered to the Preschool secretary or director in the form of cash, check or money order.

Quality First Scholarship

Funding provided by Quality First ~~Preschool Development Grant~~ is based on the following eligibility requirements:

1. Children must be 4 years of age by September 1st of the current school year.
2. Families must meet income guidelines set by the state
Family income must be at or below 200% of the Federal Poverty Level (FPL).
 - Acceptable documentation of income may include:
Proof of Family Size-current tax return
Proof of Citizenship-birth certificate or visa
Proof of Family Income-Public Assistance Approval Letter or 4 weeks' consecutive pay stubs of all family members
3. Any Child attending with a scholarship who attends less than 85% will be subject to disenrollment of scholarship.
*Priority will be given to students who have not had previous preschool experience

Children Need Healthy Meals to Learn

Page Unified Preschool participates in the National School Lunch Program and the School Breakfast Program. As part of the program, we will offer healthy meals every day at NO COST to the students due to the implementation of the Community Eligibility Provision for School Year 2022-2023. Students will be able to participate in these meal programs without

It is intended that all Page Unified School District handbooks comply with the policies established by the governing board of the Page Unified School District. In the event that anything in this handbook conflicts with current district policy, district policy will prevail.

having to pay a fee or submit a household application. Students may also bring their own lunch to school and store it in an area designated by the classroom teacher.

Early morning supervision is provided from 7:30 by our staff on the playground. On bad weather days, supervision will be in Desert View Gym instead of the playground. Be sure to let our staff on duty know that you are dropping off your child. Page Unified Preschool follows the Page Unified School District approved yearly calendar.

Preschool Curriculum and Assessment

Page Unified Preschool uses the OWL Curriculum. This is offered in a play-based format to foster language development, introduce basic concepts, develop motor skills, and provide young children with the skills to succeed in their future education. Students are involved in large-group lessons, small-group guided centers, and individual exploration activities. Learning will take place within the classroom, the cafeteria, on the playground, and within the community during class field trips.

The curriculum is based on objectives for development and learning that are aligned with the Arizona Department of Education Early Learning Standards. Monthly newsletters with current curriculum information will be provided to all families. * If you would like further information regarding the curriculum, please make an appointment with the preschool director.

Page Unified Preschool teachers use Teaching Strategies Gold to assess student development and learning in the areas of:

- Social/Emotional
- Physical
- Language
- Cognitive
- Literacy
- Mathematics
- Science/Technology
- Social Studies
- The arts

Teachers also schedule a minimum of two conferences annually with parents to discuss their child's progress in these developmental areas. *See attached calendar and dates

Policies for Screening and Referrals

PUSD is responsible to locate, identify, and evaluate children with disabilities within the geographical area of its legally designated boundaries. PUSD does this in a number of ways.

It is intended that all Page Unified School District handbooks comply with the policies established by the governing board of the Page Unified School District. In the event that anything in this handbook conflicts with current district policy, district policy will prevail.

45-Day Screening: All students enrolling in the district for the first time will be screened in the areas of vision, hearing, communication, academic skills, and social skills within 45 days of their enrollment. Any concerns identified by this screening will be followed up by the appropriate person. If you do not want your child's hearing or vision screened please inform the school in writing.

AZ FIND

Page Unified School District screens children from three years through 21 years of age. We refer infants and toddlers with disabilities to the Arizona Early Intervention Program for evaluation and services. All Child Find referrals are considered confidential and services are provided at no cost to the family.

*see calendar for Child Find screening dates

Transitioning into Our Preschool Program

Whether you are a parent starting your preschooler from home or transferring from childcare or another preschool setting, Page Unified Preschool has opportunities available for you, to make confident decisions on enrolling your student into our program. We offer several options for you to be aware of the services we provide.

- We have knowledgeable registration staff at our office who will provide you with information about our classrooms and class times
- We also will assist you in scheduling a classroom visit
- Parents and enrolled students receive a welcome packet prior to school with information you need to know about Page Unified Preschool programs
- Prior to the beginning of the new school year, all registered students and their families are invited into their classroom for orientation and meet the teacher event.

Page Unified School District works with Arizona Early Intervention Program to transition students who are currently receiving services. When the child is between the ages of 2.6 and 2.9 months, the AzEIP coordinator will schedule a transition meeting in which a representative from the school district will attend. During this meeting, participants will: review existing data, determine if additional data is needed, determine eligibility, and discuss special education options and placement.

Transitioning from Preschool into Kindergarten

It is intended that all Page Unified School District handbooks comply with the policies established by the governing board of the Page Unified School District. In the event that anything in this handbook conflicts with current district policy, district policy will prevail.

One of the added benefits of enrolling your child into our preschool program is that we are able to provide opportunities for a smooth transition into Kindergarten.

- In March Kindergarten teachers visit the preschool students in their classroom and invite them to visit a Kindergarten classroom as well
- Annual visit to the Kindergarten Campus during the month of April
- Participation in Kindergarten round-up/orientation

Family Involvement

Page Unified Preschool believes families are the child's primary source of influence. Page Preschool has an open-door policy for families and considers it a privilege for them to share their precious time and talents with the children and staff. Please join us at any time to read a story, help prepare lessons, or assist a child. Teachers can help with any needed guidance and suggestions on how to volunteer in your child's classroom. Below are some suggested ways to be involved in your child's preschool experience.

- Volunteer participation in the classroom, on field trips, or at events,
- Participate in home-based learning activities
- Try to read with your child each night
- Review skills being taught at school
- Attend conferences and meetings
- Return forms and surveys
- Attend parent development sessions
- Sign child in/out according to procedures
- Notify the school before or after absences
- Send the child with a backpack and change of clothing
- Check the child's backpack daily for notes, permission forms, etc.
- Communicate with your child's teacher often and inform them of any special events or difficulties your child is experiencing.

Attendance policy

Regular attendance and being prompt for class is both appreciated and expected. If it is necessary for a child to be kept home, please call and report his/her absence to the Preschool Office 608-4173. Excessive absences of ten days with notification will lead to your child being withdrawn from our program. Any Child attending with a scholarship who attends less than 85% will be subject to disenrollment of scholarship.

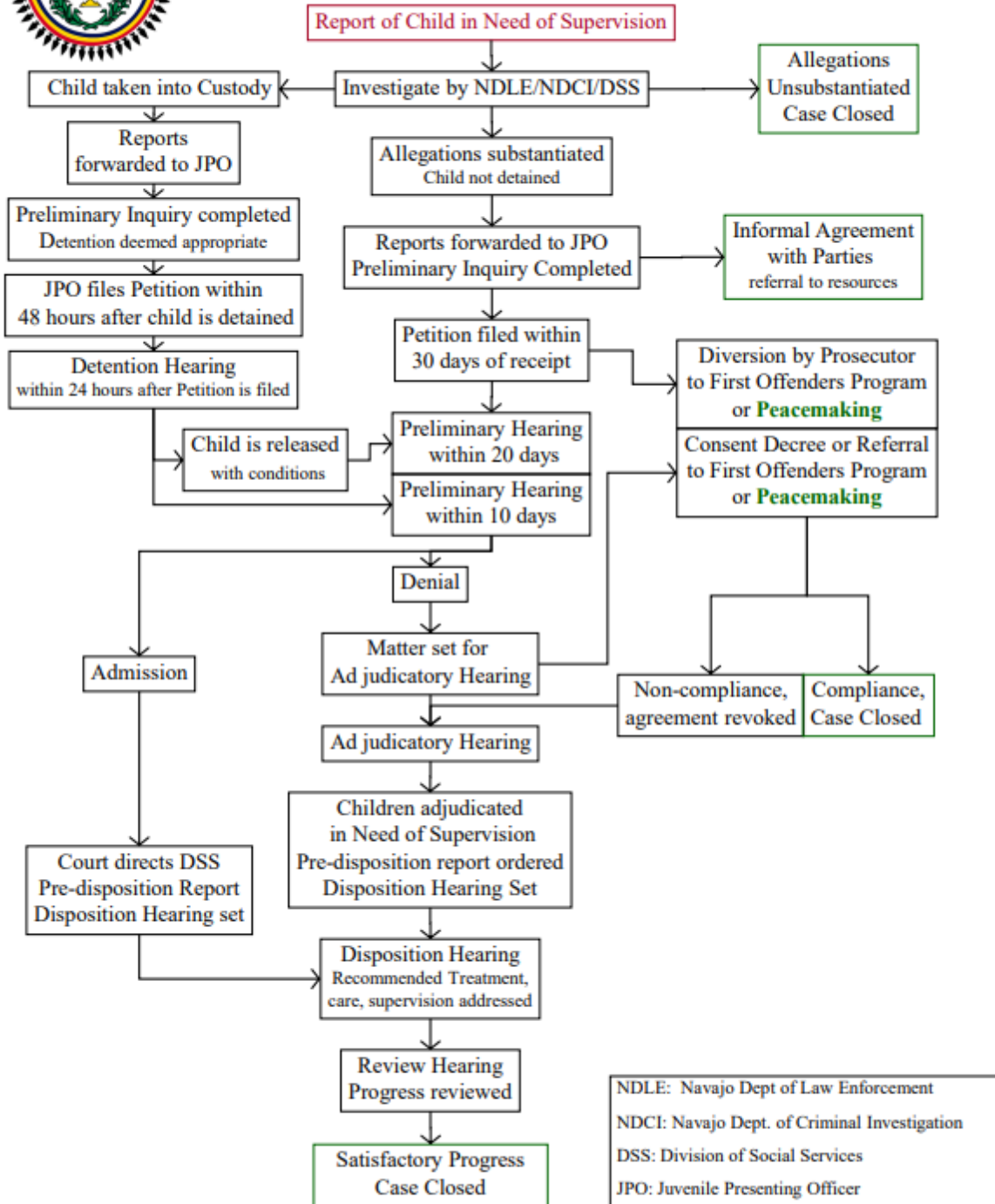
Student Withdrawal Procedures

You may withdraw your child from preschool at any time. To do so, please contact the Preschool office at least two weeks in advance at 928-608-4173.

It is intended that all Page Unified School District handbooks comply with the policies established by the governing board of the Page Unified School District. In the event that anything in this handbook conflicts with current district policy, district policy will prevail.



Navajo Nation Juvenile Justice System: Children in Need of Supervision



The Navajo Nation Juvenile Justice System: Children in Need of Supervision Flowchart was created by the Navajo Nation Criminal Justice Planning Committee (NNCJPC). Copies of this chart may be reproduced. Attribution should be given to NNCJPC. For questions contact: Navajo Nation Criminal Justice Planning Committee, Office of the Chief Prosecutor, P.O. Box 3779, Window Rock, AZ 86515, 520-871-6622. Chart printed September 2001

It is intended that all Page Unified School District handbooks comply with the policies established by the governing board of the Page Unified School District. In the event that anything in this handbook conflicts with current district policy, district policy will prevail.

Admission and Release Procedures

When enrolling your child parents will complete a Preschool Parent Information form. On this form, parents will designate all people who have permission to drop off or pick up their child. When your child arrives or is released from school, the parent, or designee, will be required to sign a daily attendance sheet. Picture identification is required to release a student to a designee. Preschool-age children are not permitted to admit or release themselves.

It is very important that parents/caregivers accompany the child to the classroom or meeting area when they arrive at school and not leave the child unless a staff member is present to supervise. An assistant teacher will accompany children who are transported by the district to the classroom. Please be prompt when picking up your child. If you are late in picking up your child, you may be withdrawn from the preschool program. If a child is left at the school after 3:30 pm (11:30 am for morning class) CPS may be called to pick up the child. Late pick-up of your child leaves teachers without a lunch break or adequate preparation time. Please be considerate and time your arrivals and pick-ups properly.

Children will only be released to parents or authorized adults. Please be prompt, as children tend to become upset, restless, and/or afraid if you are late. If an emergency arises, call the school office so that we may reassure your child. We must have either a written note or in-person request to:

- Dismiss your child early.
- Change the bus route
- Release your child to a babysitter, carpool, family member, or friend other than specified at the beginning of school.

Changes to a student's going home plans must be made by 2:00 pm. If changes are called in or written on a note, please provide the security code that you listed on their enrollment packet so that we can ensure changes are from you.

You must sign your child in and out with the preschool staff on a daily basis. Authorized adults may be asked to show photo identification prior to releasing a child into their care.

Transportation

Transportation is provided by the Page Unified School District and is offered to those students living near established bus routes. Transportation of students not living near a bus route is the responsibility of the parents. If your child's method of transportation changes, teachers need to be notified in writing or by a phone call before 2:00 p.m. Staff can not make changes on the

It is intended that all Page Unified School District handbooks comply with the policies established by the governing board of the Page Unified School District. In the event that anything in this handbook conflicts with current district policy, district policy will prevail.

word of a preschool child. Changes to a student's going home plans must be made by 2:00pm. If changes are called in or written on a note, please provide the security code that you listed on their enrollment packet so that we can ensure changes are from you. For any questions regarding where your child may be picked up and dropped off, please call the Transportation Department at (928) 645-9209. Parents must have children ready when the bus arrives. If they are not ready the bus cannot wait and the parent will be responsible for transportation. For Parents of children with special needs who have specialized transportation please call the Bus Barn if you know your child will not be coming to school on a certain day. To contact transportation after hours please call (928) 608-4131

Behavior Regulation

To provide the best educational environment, the behavior must be maintained and self-discipline must be developed by each student. No student will be allowed to disrupt the learning process of another student. Page Unified Preschool teachers and staff are responsible for enforcing the high expectations for learning and behavior. Appropriate behavior is taught, encouraged, and rewarded. Consequences for inappropriate behavior may include student-teacher discussion, re-teaching appropriate behavior, redirecting behavior, and parent contact. Students will not be unenrolled due to behavioral issues.

Field Trips

Students must have written parent permission to participate in any off-campus activity. Parents will be given permission slips prior to the event. The permissions slips will contain the date and purpose of the trip, time of departure and return, name, address, and telephone number of the destination.

School Dress Code

Send them in weather-appropriate clothing depending on the season. Morning recess can be chilly in fall or spring and very cold during the winter months. Students participate in recesses unless the National Weather Service issues an alert. Please send a coat or jacket in cold weather. Children are encouraged to wear play clothes to school. Daily activities sometimes include active messy play. **Children should feel comfortable enough to enjoy themselves without worrying about their clothes.** In addition, please send your child daily with a backpack containing a *complete* change of weather-appropriate clothing. Preschoolers often have accidents or find messes and a change of clothing may be necessary. Make sure all items are clearly labeled with your child's name. Check the backpacks daily to look for dirty clothing or any important notes from the teacher.

Backpacks

It is intended that all Page Unified School District handbooks comply with the policies established by the governing board of the Page Unified School District. In the event that anything in this handbook conflicts with current district policy, district policy will prevail.

Please provide your child with a bag or backpack big enough to hold a folder with his/her name on it. It will be used to transport papers, artwork and special items. We ask that you keep it in a special place so it will be available to your child when he/she prepares to come to school. A great deal of learning can take place as he/she takes on responsibility for his/her own backpack. Please check your child's backpack daily.

Immunizations

Children will not be allowed to attend school without proof of Immunizations. To meet Arizona's Immunization requirements children, 4 years or older, must have received the following vaccines

- ✓ 5 doses of diphtheria/tetanus/pertussis (DTP)
- ✓ 4 doses of polio
- ✓ 2 doses of measles/mumps/rubella (MMR)
- ✓ 3 doses of hepatitis B (Hep B)
- ✓ 4 doses of Haemophilus influenza type B (Hib)
- ✓ 1 dose Varicella or proof of Chicken Pox

Please see that your child's immunizations are up to date so that he/she does not have to miss any time at school.

Medications

Parents or guardians of any child enrolled in Page Unified Preschool must notify the teacher and school nurse of any medical conditions requiring special attention or consideration, including any known allergies (including food allergies). Children with an infectious disease shall be excluded from the class.

A medication consent form will need to be completed by the child's parent/guardian and kept in the school health office for any child requiring the administration of any medication during the preschool day. Medicine must be in the original container and clearly labeled. Students are not allowed to carry medication or administer to themselves.

Emergency Procedures

In the event of an emergency, parents will be contacted as soon as possible. A registered nurse is on campus. There are personnel in the Preschool trained in CPR and First Aid. For any accident occurring on school, ground parents will be provided with a completed accident report form.

Illness

If a child becomes ill at school, the nurse or classroom teacher will contact parents or emergency contacts to be taken home.

It is intended that all Page Unified School District handbooks comply with the policies established by the governing board of the Page Unified School District. In the event that anything in this handbook conflicts with current district policy, district policy will prevail.

For this reason, it is of vital importance to keep your child's emergency card up to date, which includes the following.

- Current home address and telephone number.
- Place of employment and phone number of both parents/guardians.
- Name of 4 people who are responsible for the child in the event parents cannot be located immediately if an emergency occurs.

Children who are ill **MUST** be kept home from school. Children with fever, diarrhea or vomiting in the previous 24-hour period must be kept home from school. If your child will be out sick, please call the school office to inform the teacher. (Sorry, no deductions are made in fees for tuition children).

Parents will be notified by letter if there is an outbreak of any communicable disease.

Fire Drills

Unannounced evacuation/fire drills must be conducted at least once every 30 days as required by law. Emergency evaluation plans are posted in each classroom.

Pesticide Application Procedures

Pesticides are applied the second Thursday of every month. A list of pesticides in use may be obtained in the preschool office.

Insurance

The Page Unified Preschool is fully insured by The Trust Company of Arizona. Documentation of the liability insurance coverage is available for review in Preschool Office.

Inspection Reports

Current Sanitation, Fire, and Gas inspection reports are available upon request. Contact PUSD Maintenance Director, 608-4174.

Policies, Rights & Responsibilities

Written policy's regarding, Least Restrictive Environment, Confidentiality, Extended School Year, Individualized Education Programs, Graduation and Pupil-Teacher Ratios, Private School, and Evaluation and Eligibility Determination are available upon request. The video or audio recording of any person(s) on school or district property and or distribution of any audio or video recording of any person(s) is not permitted without express written permission from school administration and is only permitted for school related activities. **It is intended that all Page Unified School District handbooks comply with the policies established by the governing board of**

It is intended that all Page Unified School District handbooks comply with the policies established by the governing board of the Page Unified School District. In the event that anything in this handbook conflicts with current district policy, district policy will prevail.

the Page Unified School District. In the event that anything in this handbook conflicts with current district policy, district policy will prevail.

STUDENT RIGHTS

- Students have the right to a quality education in a clean, safe environment.
- Students have the right to be clearly informed about any rules for which they will be held accountable, to be informed of any charges which may be made against them, and ask for consideration of special circumstances.
- Students have the right of privacy of person, and freedom from unreasonable search and seizure of property unless school employees have reason to suspect that the health, safety, or welfare of students may be in danger.
- Students have a right to present a complaint or grievance when rights are violated by following the procedures outlined in the 2022-2023 Family Handbook.

STUDENT RESPONSIBILITIES

- Students have a responsibility to promote a clean, safe environment where a quality education can be delivered.
- Students have a responsibility to be informed of and follow the school's code of conduct outlined in Preschool Family Handbook.
- Students have a responsibility to avail themselves of a quality education by attending school regularly, completing assigned school work, and asking for consideration of special circumstances.
- Students have the responsibility to comply with the Page Unified School District Technology Resources Acceptable Use Policy as outlined in the 2022-2023 Family Handbook. Violation of this Policy may constitute a criminal offense and result in disciplinary action and revocation of their use of district technology resources.

STUDENT LIABILITIES

- Students are liable for conduct that interferes with the educational process at Page Unified Preschool.
- Students will be subject to disciplinary procedures outlined in the 2022-2023 Family Handbook when they violate the school's code of conduct.

Page Unified Preschool is regulated by the Arizona Department of Health Service. Inspection information can be obtained in the Preschool office or by contacting:

Arizona Department of Health Services.
1500 E Cedar, Suite 22 ---- Flagstaff, AZ 86004----928-774-2707

Empower Program

Page Unified Preschool participates in the Empower program and has adopted 10 standards that support healthy eating, encourage active play, prevent exposure to second- and third-hand smoke, practice sun safety and promote good oral health habits.

Physical Activity

It is intended that all Page Unified School District handbooks comply with the policies established by the governing board of the Page Unified School District. In the event that anything in this handbook conflicts with current district policy, district policy will prevail.

Page Unified Preschool is committed to our children's health and understands the unique needs of each child. We value our staff members as positive role models who help children begin healthy habits at a young age. We promote, both indoor and outdoor physical activity by following the guidelines below.

- For children two years and older:
- Daily physical activity is planned and initiated:
- Staff members will include at least 60 minutes per day for physical activity.
- Staff members will encourage both moderate and vigorous levels of physical activity.
- Sedentary time is limited to less than 60 minutes at a time, except when sleeping
- Screen time is limited to 30 min or less per week.
- Exceptions to screen time limits include: children needing assistive and/or adaptive equipment or when screen time engages children in physical activity or is used for educational purposes.
- Physical activity will never be used or withheld as a punishment.
- Screen time is not allowed during meal or snack time.

Sun Safety

Page Unified Preschool is dedicated to protecting the wellbeing and overall health of our children and staff members. It is our goal to keep all outdoor activities enjoyable and fun, while keeping everyone sun safe. To ensure the children are protected from overexposure to the sun's rays while outdoors, we pledge to:

- Ask parents to apply sunscreen to their children prior to arriving at our facility
- Request that the child's parent provide a hat, lip balm, sunglasses and clothing that covers the child for outdoor activity.
- Seek written permission to apply sunscreen to a child in our care.
- Provide shade for outdoor activities
- Teacher sun safety practices by modeling good sun safety habits.

Breastfeeding

We at Page Unified Preschool are committed to providing ongoing support to breastfeeding mothers including mothers, by adhering to the following guidelines:

Breastfeeding mothers, including staff members are offered a private and sanitary place to breastfeed their babies or express milk.

A refrigerator or designated space within a refrigerator and/or freezer is made available for the storage of expressed milk. Breastfeeding mothers, and staff members may store their expressed breast milk in the child care facility's refrigerator and/or freezer. Mothers should provide their own container(s), clearly labeled with their baby's first and last name and the date it was brought to the facility.

It is intended that all Page Unified School District handbooks comply with the policies established by the governing board of the Page Unified School District. In the event that anything in this handbook conflicts with current district policy, district policy will prevail.

The Child & Adult Care Food Program (CACFP)

We at Page Unified Preschool are committed to our children's health. We recognize the importance of staff members and child care providers as positive role models for children as they learn to live healthy lives. The American Academy of Pediatrics recommends that preschool children drink no more than four to six ounces of 100% fruit juice each day. Page Unified Preschool adheres to the following fruit juice guidelines.

- One year to less than six years: no more than 4 ounces will be served at a time.
- Only 100% fruit juice with no added sugar will be served.
- Fruit juice will only be served with meals and snacks.
- Water will be used as the first choice for thirst.
- Water will be offered throughout the day.

Family-Style Meals

We at Page Unified Preschool are committed to supporting your child in establishing lifelong habits of healthy eating patterns. In keeping with this philosophy, our facility:

- Will provide nourishing food appropriate to the child's needs. The child's role is to decide whether and how much to eat. We will never force a child to eat or discourage a child from eating food that is healthy for them.
- Staff members model behaviors for healthy eating and positive body image in the presence of children.

Nutrition Education

We at Page Unified Preschool are committed to educate children, staff, and families about nutrition.

- Children will learn about nutrition through stories and activities.
- Staff will participate in training on nutrition topics.
- Families will be provided with information and training around nutrition.

Oral Health

We at Page Unified Preschool are committed to protecting the health and safety of our children, staff members and child care providers in regards to tooth decay. Tooth decay is an infectious disease and a serious problem among young children in Arizona. Our facility recognizes that we play an important role in preventing tooth decay and in educating children, parents, staff members and child care providers on tooth decay prevention. In keeping with this philosophy, our facility:

It is intended that all Page Unified School District handbooks comply with the policies established by the governing board of the Page Unified School District. In the event that anything in this handbook conflicts with current district policy, district policy will prevail.

- Provide monthly oral health education
- Provide oral health services from Coconino County Public Health Services twice a year
- Schedule snack times and promote healthy options.

Staff Training

We at Page Unified Preschool are committed to furthering staff member and child care provider knowledge on the Empower Program and Empower standards. In keeping with this philosophy, our facility will make sure that our staff members and child care providers receive three hours of training annually on age and developmentally-appropriate Empower topics.

Arizona Smokers Helpline (ASHLine)

We at Page Unified Preschool are committed to supporting the efforts of the Arizona Smokers' Helpline (ASHLine) to help staff members, child care providers and parents quit tobacco. In keeping with this philosophy and to protect the health of our children, their parents, staff members and child care providers, our facility promotes the ASHLine information on the dangers of second and third-hand smoke. We will also refer parents, when possible, to ASHLine.

Smoke-Free Environment

We at Page Unified Preschool are committed to providing a smoke-free environment for children, staff members, and child care providers. Due to hazards from exposure to second-hand smoke and as a recognized Empower child care facility, it shall be the policy of this child care facility to provide a tobacco-free environment for children, staff members, child care providers, and parents.

It is intended that all Page Unified School District handbooks comply with the policies established by the governing board of the Page Unified School District. In the event that anything in this handbook conflicts with current district policy, district policy will prevail.

Dear Parent or Guardian:

It is your responsibility to become familiar with the guidelines and procedures contained in the Family Handbook. Please sign and return.

My Signature below verifies that I have received and read Page Unified Preschool Family Handbook.

Students Name

Students Teacher

Parents Name

Parents Signature

Date

It is intended that all Page Unified School District handbooks comply with the policies established by the governing board of the Page Unified School District. In the event that anything in this handbook conflicts with current district policy, district policy will prevail.