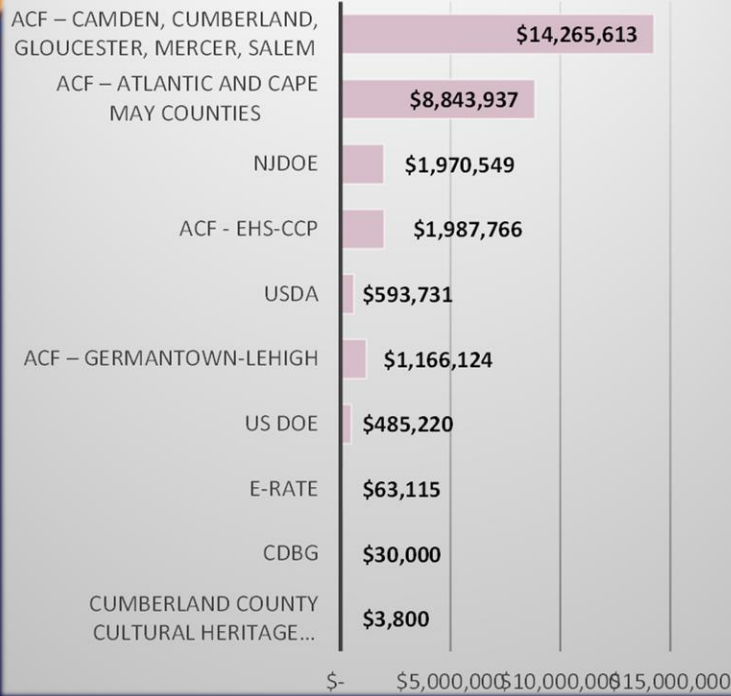
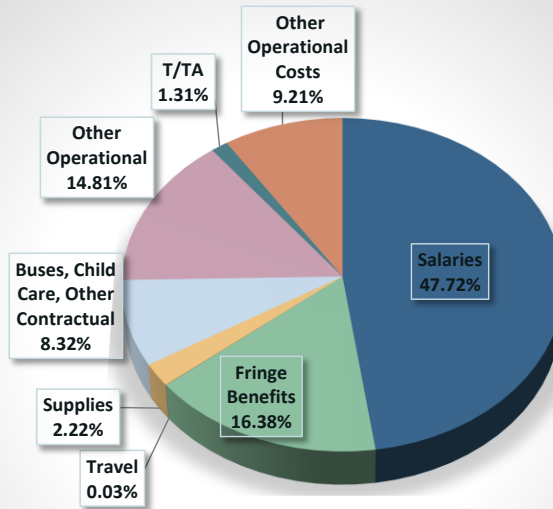


Funding Sources for Gateway Head Start



How Gateway Early Head Start and Head Start Utilizes its funding



ANNUAL REPORT 2021

GATEWAY EARLY HEAD START AND HEAD START

Gateway Community Action Partnership

Frank Glien, LLC, Certified Public Accountant, has expressed an unmodified opinion (present fairly and are free from material misstatement) on the audited Financial Statements for Tri-County Community Action Agency, DBA Gateway CAP (a non-profit organization) which comprises Statement of Financial Position as of June 30, 2021 and 2020, and the related Statements of Activity, Functional Expenses, and Cash Flow for the years then ended in accordance with Generally Accepted Accounting Principle

ADDRESS

110 Cohansey Street, Bridgeton, NJ 08302

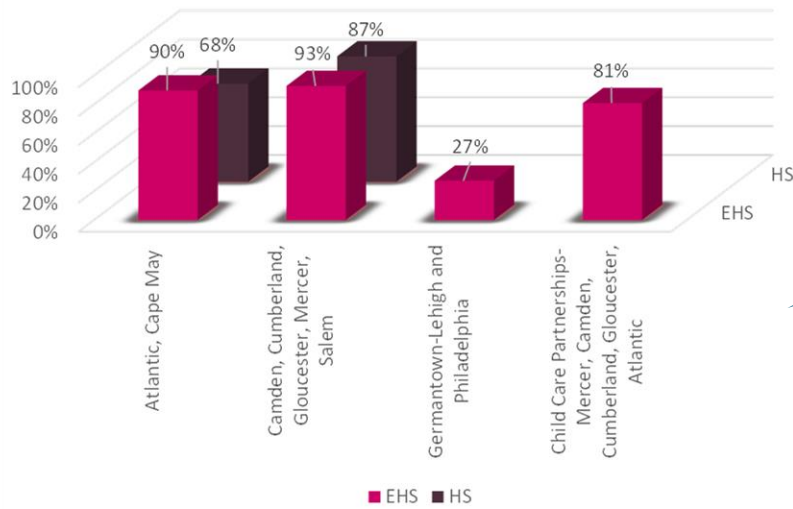
CONTACT US

(856)453-0803 | beggen@gatewaycap.org
www.gatewaycap.org



Average Monthly Enrollment (Percentage)

Early Head Start and Head Start



Early Head Start had a monthly average enrollment of 457 infants, toddlers, and pregnant women. Head Start had a monthly average enrollment of 972 preschool children through out the year, dropping to an average of 141 children during the summer.

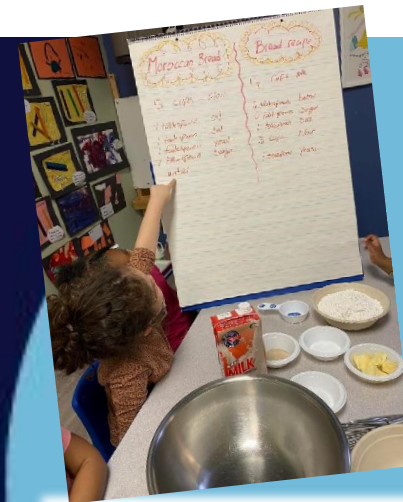
Kindergarten Readiness- Program wide

Area of Development	FALL		WINTER		SPRING	
	Emerging	Accomplished	Emerging	Accomplished	Emerging	Accomplished
Social Emotional	60%	40%	38%	62%	19%	81%
Physical	48%	52%	38%	63%	15%	85%
Language	60%	40%	47%	53%	20%	80%
Cognitive	64%	36%	45%	55%	19%	81%
Literacy	70%	30%	47%	53%	20%	80%
Mathematics	69%	31%	46%	54%	21%	79%

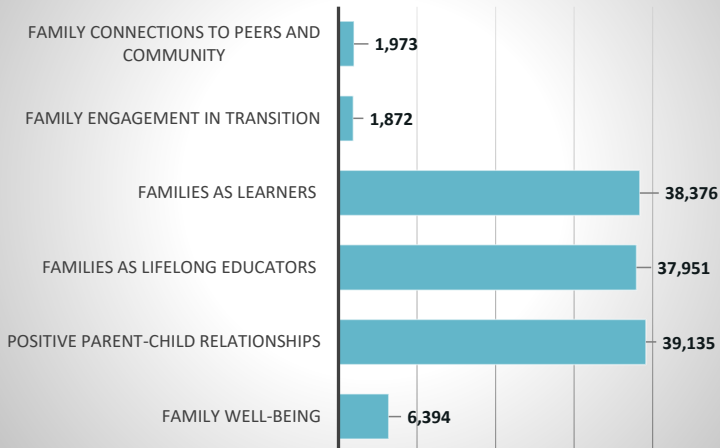
The Ready Rosie app leverages the power of video modeling, family workshops, and mobile technology to build powerful partnership The Ready Rosie app leverages the power of video modeling, family workshops, and mobile technology to build powerful partnerships between families and educators, resulting in *Ready Families, Ready Educators.*



Despite the impacts of the pandemic, 97% of children served were fully immunized. In addition, 99% of children had access to medical services.



Ready Rosie App Usage by Family Outcome Category



69% of Head Start children and 63% of Early Head Start children received dental care during the year. During the 2020-21 program year many dentists were closed for periods of time. Some dentists were backed up with appointments from earlier in the pandemic. In addition, parents reported being fearful of taking their unvaccinated child to the dentist.



Early Head Start and Head Start Children Served Atlantic, Camden, Cape May, Cumberland, Gloucester, and Mercer Counties and the city of Philadelphia

