

WHAT IS THE 3RD GRADE RETENTION LAW?

In 2021, the Tennessee Legislature passed a law that requires 3rd grade students who are not meeting expectations in English/Language Arts to be retained unless certain requirements are met. This year, here are the options for a third grade student to advance to the fourth grade.

HOW ARE THIRD GRADERS IN HICKMAN COUNTY PROMOTED TO FOURTH GRADE?

1

Met or Exceed Expectation

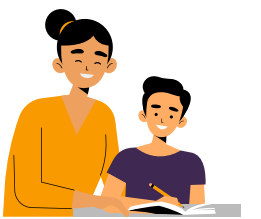
Students who score **Met or Exceeded Expectation** on the 2024 ELA TCAP are promoted to fourth grade.



4

Summer Learning OR Tutoring

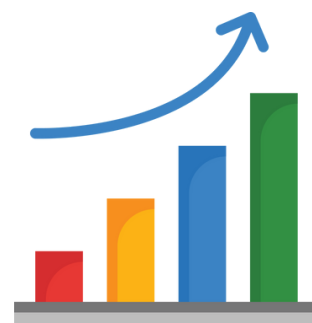
Students who score **Approaching Expectation** must attend summer learning camp where they maintain 90% attendance and show growth between the pre- and post- camp assessment **OR** be assigned to a tutoring group for 4th grade. During their fourth grade year, they must show growth on TCAP to be promoted to 5th grade.



2

Aimsweb and Tutoring

Students who score **Approaching Expectation** on the 2024 ELA TCAP, **BUT** are within the 50th percentile or higher on Aimsweb are promoted to 4th grade **IF** they are assigned to a tutoring group for 4th grade.



5

Summer Learning AND Tutoring

Students who score **Below Expectation** must attend summer learning camp where they maintain 90% attendance and show growth between the pre- and post- camp assessment **AND** be assigned to a tutoring group for 4th grade. During their fourth grade year, they must show growth on TCAP to be promoted to 5th grade.



3

TCAP Retake

Students who score **Approaching or Below Expectation** have the opportunity to retake the test. If they score **Met or Exceeded Expectations** on the retake, they are promoted to fourth grade. If they do not, they must select a different path.



6

Appeal to State

Students who score **Approaching Expectation** may appeal to the TDOE with evidence of growth and/or catastrophic event. If approved, they are promoted to 4th grade.

EXCEPTIONS THAT ALLOW FOR PROMOTION NO MATTER THE TCAP SCORE

1

A student who was previously retained in any grade K-3

2

An English Learner who has had less than 2 years of ELA instruction

3

A student who has a disability or suspected disability that impacts reading.

