

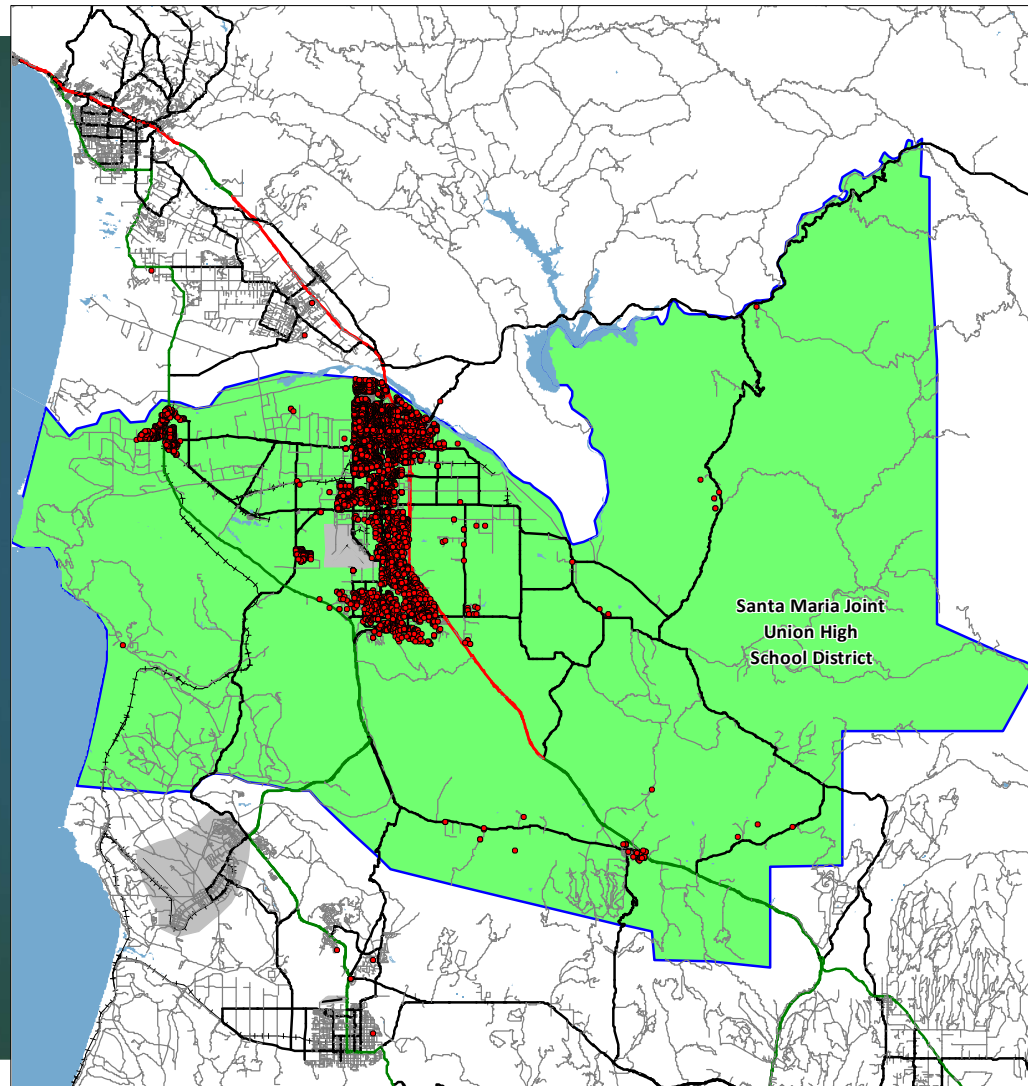
Santa Maria JUHSD 2024/25 Demographics & Enrollment Projections

June 10, 2025



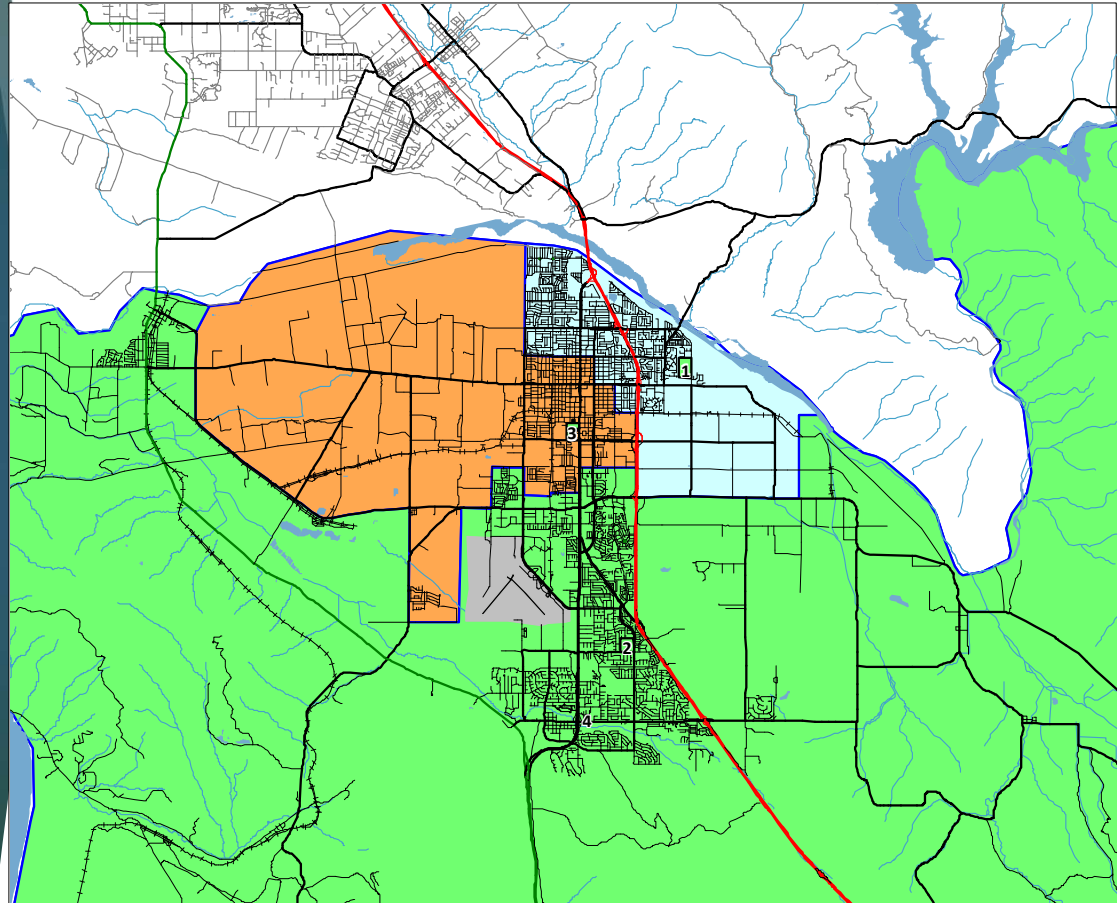
District Map & Student Distribution

- ▶ District information is input into a GIS program for analysis.
- ▶ Students are “geocoded” based on their current residential address.



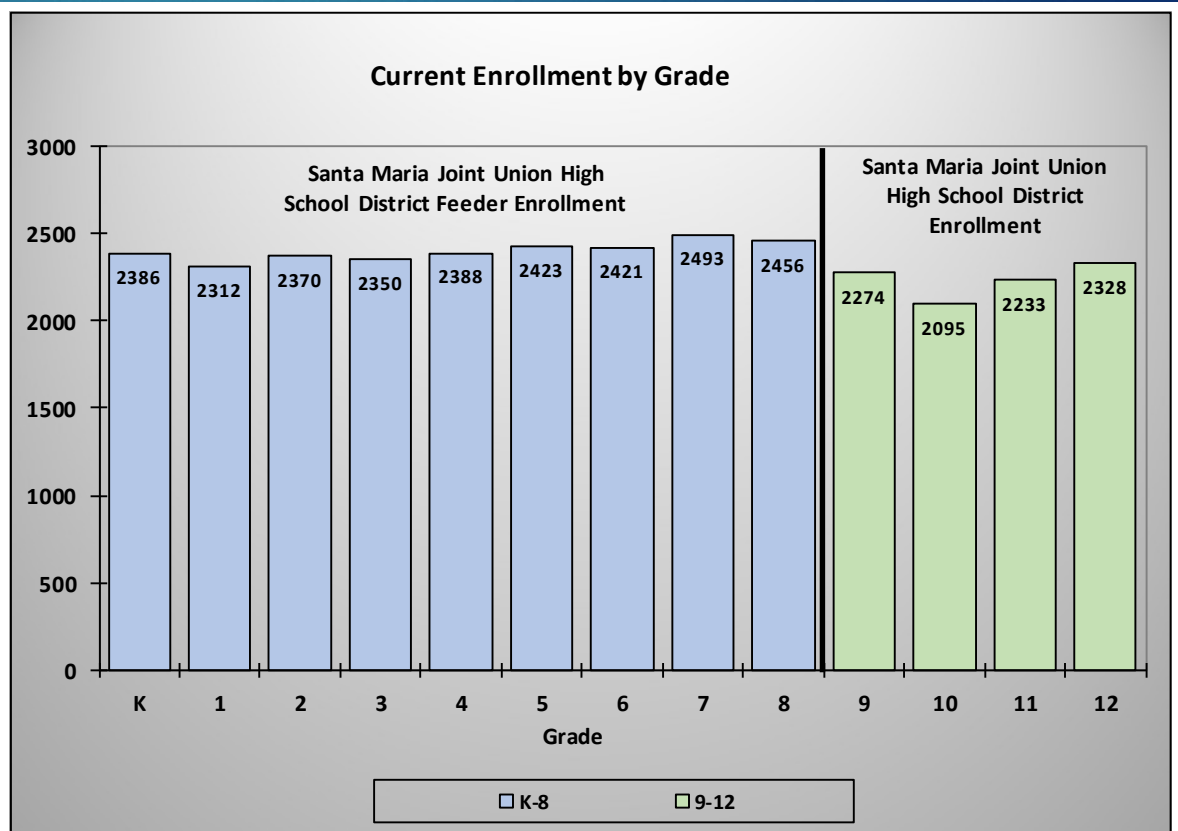
High School Boundaries & School Sites

<u>Id</u>	<u>School</u>
1	Pioneer Valley High
2	Righetti High
3	Santa Maria High
4	Delta High



Enrollment Analysis

This chart illustrates the October 2024 enrollment by grade level for Santa Maria Joint Union High School District and the combined enrollment of the feeder school districts.

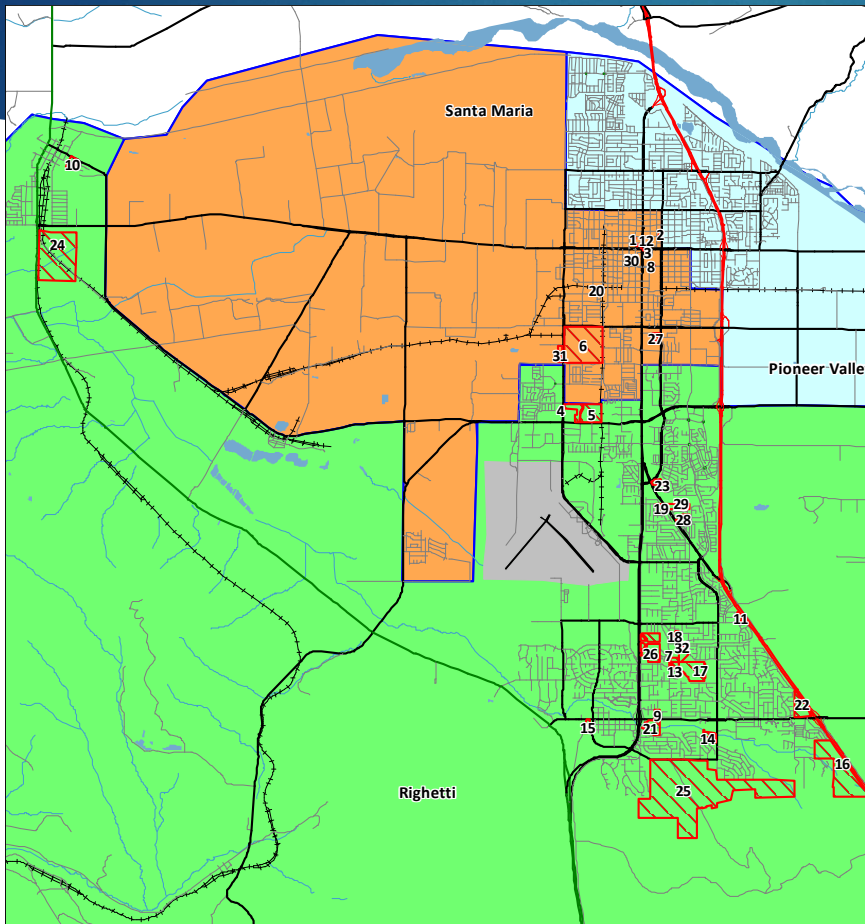


Santa Maria Joint Union High School District								
Historic Enrollment and Cohorts								
<u>Grade</u>	CalPADS Enrollment				Historic Cohorts			Weighted <u>Average</u>
	<u>21/22</u>	<u>22/23</u>	<u>23/24</u>	<u>24/25</u>	<u>21 to 22</u>	<u>22 to 23</u>	<u>23 to 24</u>	
9	2,296	2,232	2,081	2,274				
10	2,356	2,291	2,234	2,095	-5	2	14	6.8
11	2,291	2,367	2,227	2,233	11	-64	-1	-20.0
12	2,314	2,377	2,443	2,328	86	76	101	90.2
Totals	9,257	9,267	8,985	8,930	30.7	4.7	38.0	25.7
Annual Change:		10	-282	-55				

Historic Enrollments & Cohorts

New Housing Developments

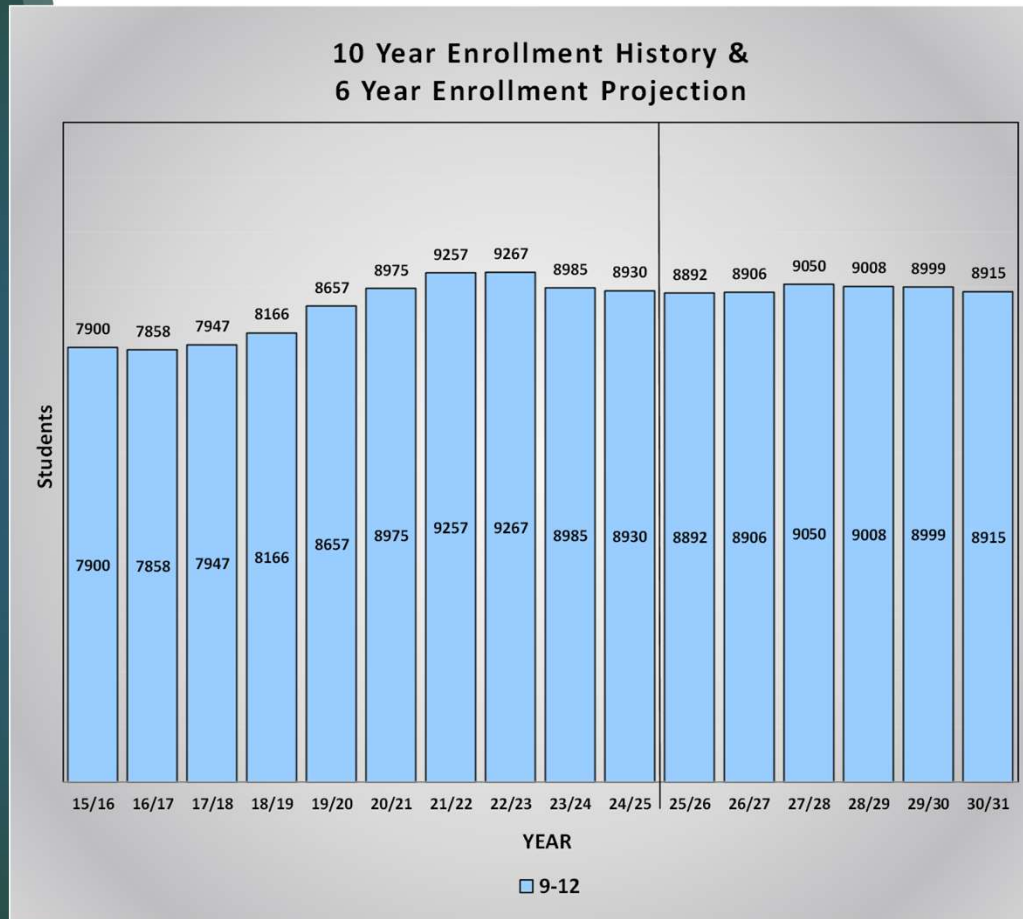
6



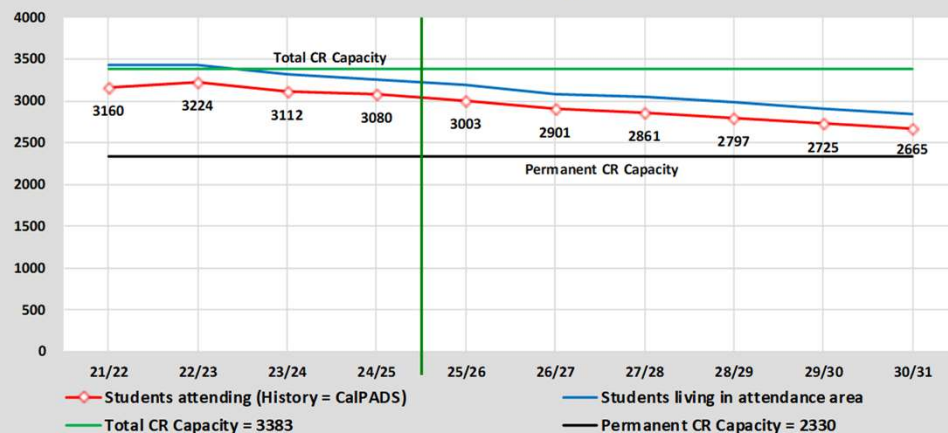
ID	Name	Remaining Units	Six Year Projection	High School Boundary
1	200 Mill Apts	20	20	Santa Maria
2	309 Mill Apts	23	23	Santa Maria
3	Alvin Newton Apts	10	10	Santa Maria
4	Avate Apartments	86	86	Righetti
5	Betteravia Plaza	299	299	Righetti
6	Blosser Ranch	1,170	475	Santa Maria
7	Boys and Girls Club	80	0	Righetti
8	Cook Street Apartment	28	28	Santa Maria
9	Element Church	0	0	Righetti
10	Escalante Meadows	28	28	Righetti
11	Foster Rd Apts KS H	61	61	Righetti
12	Gateway Apts	18	18	Santa Maria
13	Hummel Cottages	30	0	Righetti
14	Key Site 10	90	0	Righetti
15	Key Site 16	117	0	Righetti
16	Key Site 3	279	80	Righetti
17	Key Site 30	69	0	Righetti
18	Leo Evans-Northpointe	95	0	Righetti
19	Magnolia Apartments	114	0	Righetti
20	Oakley Court Apts	30	0	Santa Maria
21	Orcutt Creek Village KS 11	157	50	Righetti
22	Orcutt Marketplace KS1	160	80	Righetti
23	Park Edge Apartments	140	140	Righetti
24	Pasadera	321	260	Righetti
25	Rice Ranch KS12	176	176	Righetti
26	Richards Ranch KS26	386	0	Righetti
27	Sierra Sands	121	121	Santa Maria
28	Skylight Homes	49	49	Righetti
29	Skyview Estates	27	27	Righetti
30	Vino Bella Apts	32	0	Santa Maria
31	Westgate Village	126	126	Santa Maria
32	Woodmere Villas	258	0	Righetti
Totals		4,600	2,157	

Enrollment History & Projections

► This chart provides a summary of the last ten (10) years of historic enrollment and projected enrollment for the next six (6) years.



Capacity & Projected Enrollment Pioneer Valley High



District Loading Standards
 Traditional School
 All Portables Loaded
 Total CR Count = 92 permanent plus 39 portables
 Grades Served = 9 - 12

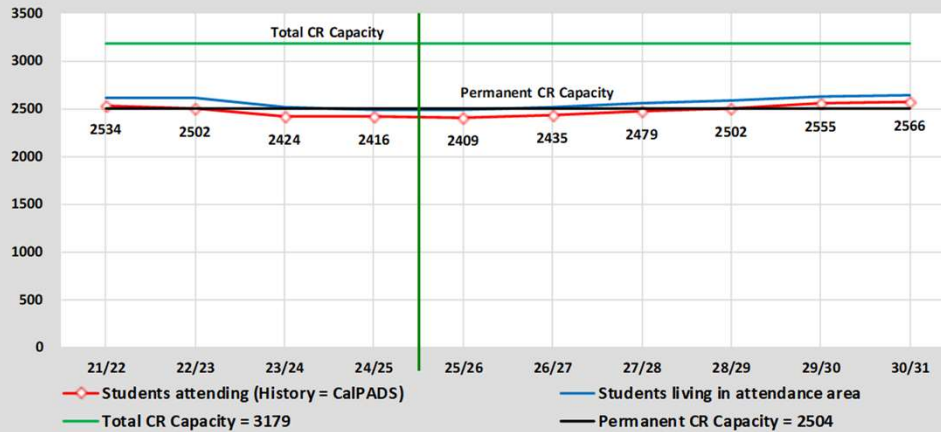
Classroom Needs Timeline

Year	Total Students*	Annual Change	Spec. Ed. Classrooms	Permanent CR Capacity	Seats Needed	Annual CR Needed	Total CR's Needed	Available Seats	Projected Housing Units
24/25	3080	-32	11	2330	750	28	28	0	
25/26	3003	-77	11	2330	673	0	25	0	0
26/27	2901	-102	11	2330	571	0	22	0	0
27/28	2861	-40	11	2330	531	0	20	0	0
28/29	2797	-64	11	2330	467	0	18	0	0
29/30	2725	-72	11	2330	395	0	15	0	0
30/31	2665	-60	11	2330	335	0	13	0	0

*Based on Students Attending (Squares on Graph)
 Permanent CR Count = 92

Pioneer Valley High Enrollment Projection

Capacity & Projected Enrollment Righetti High



District Loading Standards
Traditional School
All Portables Loaded
Total CR Count = 100 permanent plus 25 portables
Grades Served = 9 - 12

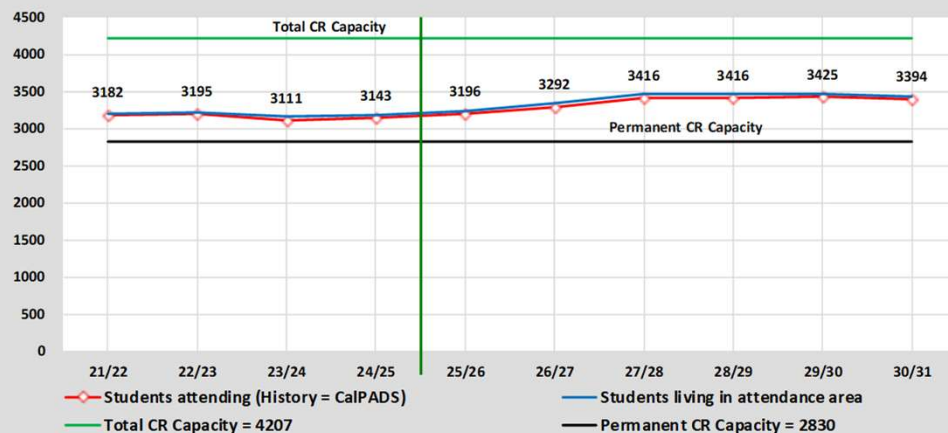
Classroom Needs Timeline

Year	Total Students*	Annual Change	Spec. Ed. Classrooms	Permanent CR Capacity	Seats Needed	Annual CR Needed	Total CR's Needed	Available Seats	Projected Housing Units
24/25	2416	-8	14	2504	0	0	0	88	
25/26	2409	-7	14	2504	0	0	0	95	112
26/27	2435	26	14	2504	0	0	0	69	293
27/28	2479	44	14	2504	0	0	0	25	225
28/29	2502	23	14	2504	0	0	0	2	205
29/30	2555	53	14	2504	51	2	2	0	275
30/31	2566	11	14	2504	62	1	3	0	226

*Based on Students Attending (Squares on Graph)
Permanent CR Count = 100

Righetti High Enrollment Projection

Capacity & Projected Enrollment Santa Maria High



District Loading Standards
 Traditional School
 All Portables Loaded
 Total CR Count = 110 permanent plus 51 portables
 Grades Served = 9 - 12

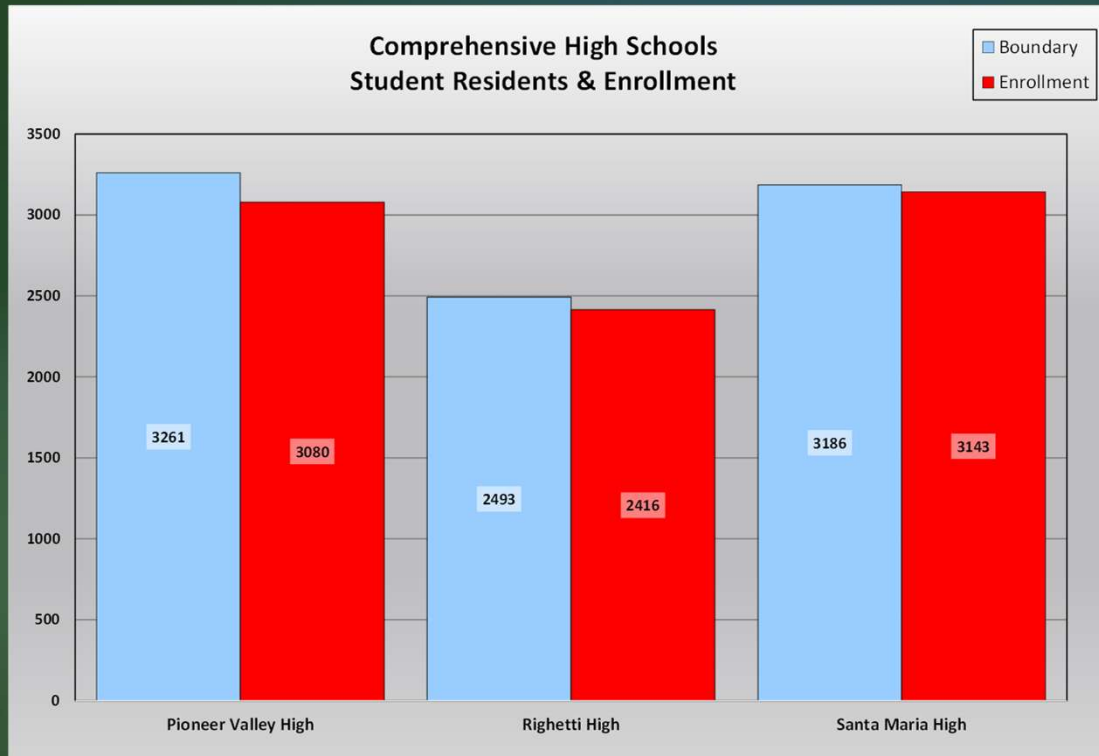
Classroom Needs Timeline

Year	Total Students*	Annual Change	Spec. Ed. Classrooms	Permanent CR Capacity	Seats Needed	Annual CR Needed	Total CR's Needed	Available Seats	Projected Housing Units
24/25	3143	32	10	2830	313	12	12	0	
25/26	3196	53	10	2830	366	2	14	0	139
26/27	3292	96	10	2830	462	4	18	0	37
27/28	3416	124	10	2830	586	4	22	0	162
28/29	3416	0	10	2830	586	0	22	0	149
29/30	3425	9	10	2830	595	1	23	0	179
30/31	3394	-31	10	2830	564	0	21	0	155

*Based on Students Attending (Squares on Graph)

Permanent CR Count = 110

Santa Maria High Enrollment Projection



Students in Boundary & Enrollment Comparison

Page 24 (Demographic Study)

ATTENDANCE MATRIX

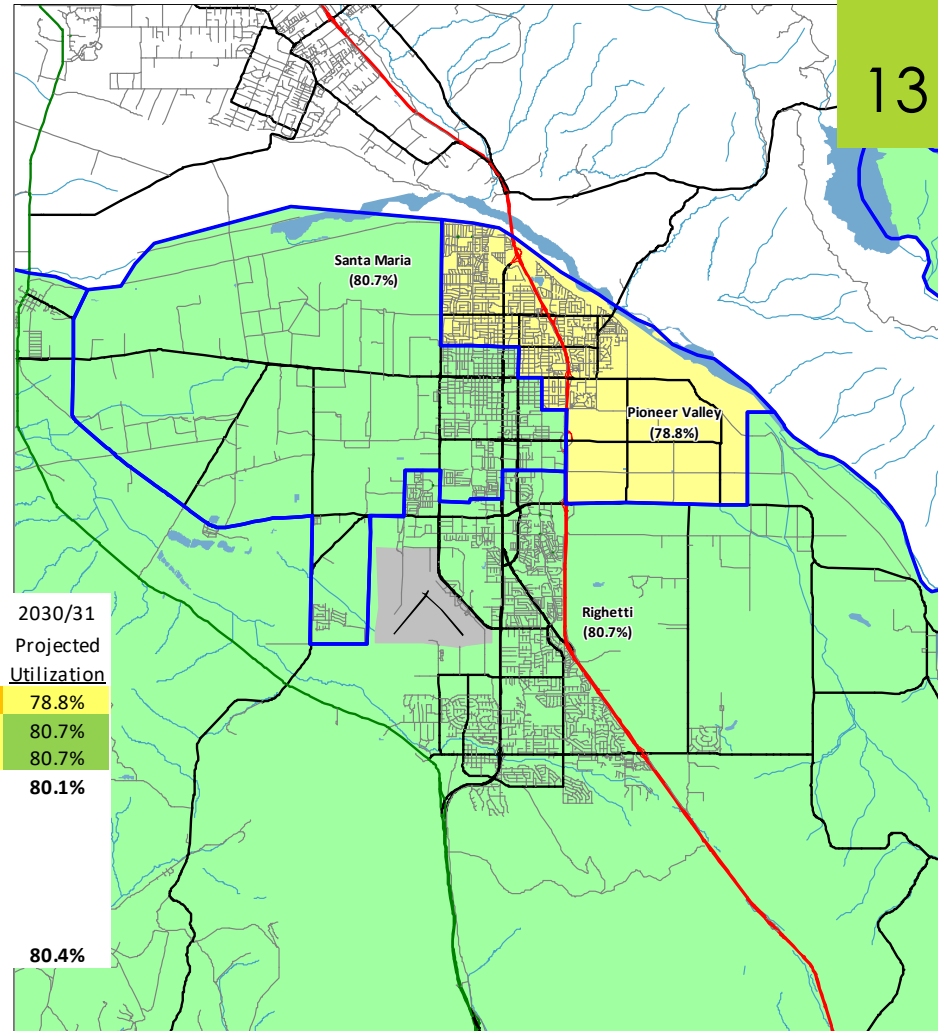
R E S I D E N C E	SCHOOL: <u>AREA</u>	SCHOOL OF ATTENDANCE				Total Residing
		Pioneer Valley High	Righetti High	Santa Maria High	Delta High	
	Inter-District	2	10	0	0	12
	Pioneer Valley High	2,953	78	150	80	3,261
	Righetti High	47	2,235	106	105	2,493
	Santa Maria High	83	108	2,888	107	3,186
	Correction Factor*	-5	-15	-1	-1	-22
	Total Attending	3,080	2,416	3,143	291	8,930
	Intra-Ins	130	186	256	292	864
	Inter-Ins	2	10	0	0	12
	Total In-Flow	132	196	256	292	876
	Intra-Outs	308	258	298	0	864
	Net Transfers	-176	-62	-42	292	12
	% In-Flow Students	4.3%	8.1%	8.1%		9.8%
	% Out-Flow Students	9.4%	10.3%	9.4%		9.7%
* The correction factor represents the difference between the student data download counts and the actual CalPADS counts.						

Attendance Matrix

Utilization

► The following chart shows the current and projected utilization rates for each school. The map illustrates the projected utilization.

School Facility Utilization			2024/25	2030/31	2024/25	2030/31
		Total CR	Current	Projected	Current	Projected
<u>High Schools</u>	<u>Classrooms</u>	<u>Capacity</u>	<u>Enrollment</u>	<u>Enrollment</u>	<u>Utilization</u>	<u>Utilization</u>
Pioneer Valley High	131	3,383	3,080	2,665	91.0%	78.8%
Righetti High	125	3,179	2,416	2,566	76.0%	80.7%
Santa Maria High	161	4,207	3,143	3,394	74.7%	80.7%
Sub-Totals	417	10,769	8,639	8,625	80.2%	80.1%
<u>Other Schools</u>						
Delta High	12	324	291	290		
Sub-Totals	12	324	291	290		
District Totals	429	11,093	8,930	8,915	80.5%	80.4%



Assisted 350 School Districts in CA

14

Contact Information:

Ken Reynolds, President

E-mail: ken@schoolworksgis.com

8700 Auburn Folsom Rd, #200
Granite Bay, CA 95746

Phone: (916) 733-0402

Website: www.SchoolWorksGIS.com

