

Scores By Test

The Scores by Test report is a student listing for all test results for a given subject



How to access: Click on the A+ icon and then Scores by Test under Leading Indicators

Progress Monitoring

Lagging Indicators	Leading Indicators
AYP Accelerator Ranking Report Cohort Comparison Subject Strand	Item Analysis Ranking by Benchmark Student Item Analysis Scores by Test

Course Subject: -Select Course Subject- ▼

-Select Course Subject-

Math

Reading

Science

✓ Select a course subject

Page 1 of 2 Row Count: 68

Student Information	Test		
Student ▲	M07 BMT3 2008-09	M07BM1 2008-09	M07BMT2
118646907, Student	71%		59%
127485525, Student	69%		
127489373, Student	89%		
21265815, Student	74%	50%	93%
4527393, Student	57%	40%	41%
4527559, Student	57%	57%	36%
4528337, Student	66%	43%	66%
4528475, Student	71%	40%	70%
4528831, Student	63%	47%	75%

How to Read:

- Column by column will show how your students have performed over all on a given test
- Row by row to see how individual students have performed over time
- Use the color swatches to filter only on students who have not yet met the threshold (RED) and that may need remediation
- The percentages shown represent the actual score the students have achieved on all questions on the particular test.
- The colors are based on the mastery and threshold values set by the district

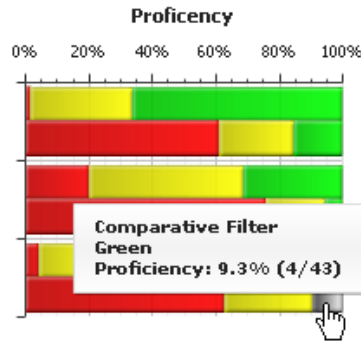
✓ Click on the bar graph icon for all tests or for an individual test

1 2 Page 1 of 2 Row Count: 68

Student Information Test

Show Filter Summary

- All Course Types And Tests
 - Math
 - M07 BMT3 2008-09
 - M07BM1 2008-09
 - M07BMT2
 - Reading
 - Science



Legend	
Test	Proficiency %
M07 BMT3 2008-09	1.5 32.4 66.2
	60.9 23.9 15.2
M07BM1 2008-09	20.3 48.4 31.3
	75.7 18.9 5.4
M07BMT2	4.5 19.7 75.8
	62.8 27.9 9.3

How to Read:

- The “tree” on the left gives you options as to the tests that you want to see
- The middle proficiency graph has two bars per test
 - ❖ The top bar is for your students
 - ❖ The bottom bar represents the district if no comparative filters are selected
 - ❖ Use your comparative filters to disaggregate the data by subgroup
 - ❖ Hover over a bar to see the % proficient as well as the counts proficient/total students who took the test

The Legend on the right allows you to access an Item Analysis report for a particular test.

The data found in the Proficient graph is shown here in chart form.

Questions to Ask:

- How did my students perform as compared to themselves on similar tests?
- How did these students perform as compared to the district?
- Did my students meet proficiency based on the mastery level set by the district?
- Am I making progress as I approach the State test administration?
- Are my students performing better in one subject than another?