

BOOKS

1911

1912

1913

1914

1915

1916

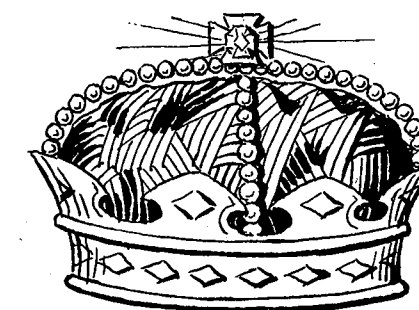
1917

1918

Crown Jewel

VOLUME II

1925



STUDENT BODY
LAKE WALES HIGH SCHOOL

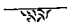


FOREWORD

◆

We have tried to put into this book those things which will recall pleasant memories of the incidents happening this year, of friendships formed which will last long after this ink has faded from view.

And if, in the distant future, this book may carry you back and bring to mind something which will reveal a smile, then we have achieved our purpose.



DEDICATION

◆

We, the Senior Class of Lake Wales High School, dedicate this, the second volume of the Crown Jewel,

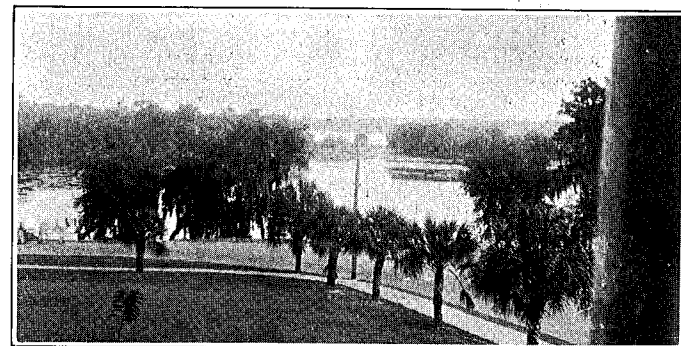
TO

Our Beloved Parents

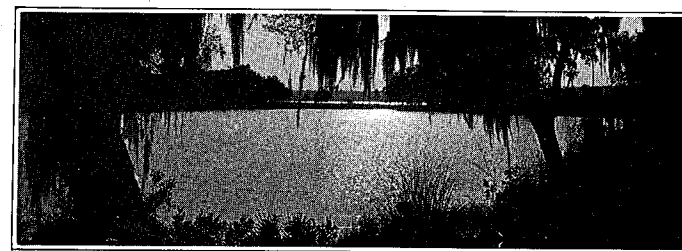
AND

Our Loyal Patrons

Who have helped, encouraged and directed us in every difficulty and have been so whole-heartedly interested in our efforts.



*The fronded palm, the whispering pine,
The moss-draped oak, the flaming vine,
The nature-lover's blissful shrine,
Is the verdant state of Florida.*





H. N. DONOHO
Principal



Mrs.
H.N. Donoho

Mr.
Robert Welch

Miss
Florine
Johnson

Mrs.
J.H.
Ellis

Miss Rachel Calvert

Mrs. Hubert Bazzard

IF
 There is anything
 About this
 Annual that you
 Don't like—
 IF
 It isn't exactly like it
 Should be—
 IF
 You wanted
 It different—just keep
 That to
 Yourself.
 IF
 You like
 The artistic way it is planned,
 Just tell that to
KATHERINE ALEXANDER.
 IF
 The ads are up to date and
 Interesting, cheer
MORRIS
 Up by telling him.
 As you turn
 To the wittiest part, give
MABRY
 The credit for being witty.
 As you look at
 The athletic pictures, you'll
 Realize
 What fine teams we have
 And what a fine
 Athletic Editor
BETTY LEE
 Is. Taking
 All in all, we think we
 Have a fine
ANNUAL
 And a fine bunch of
STUDENTS—
 What do
YOU
 Think
 ?

