



SPRING 2020 ● ● ● ●

the  
**ECHO**  
ST. MARY'S ACADEMY  
ALUMNAE & FRIENDS NEWSLETTER





# FROM THE PRINCIPAL

Dear St. Mary's Academy Alumnae and Friends,

My hopes and prayers are this edition of the ECHO finds you and yours safe and healthy. I trust you share in my concern for those who have been negatively impacted by the current COVID -19 crisis. We continue to pray for, and hold in our hearts, all our sisters and brothers.

Despite the current health situation, we are happy to share St. Mary's Academy's 131st year of educating young women, ends on a good note with our soon to graduate Blue Ties having a successful, yet unusual, conclusion to their high school education.

As we move forward in the last quarter of this school year, in a very unprecedented way, our entire school community have met the challenges head on, and have not skipped a beat, staying on track to finish strong. The innovation and dedication from our faculty and staff, along with the resiliency and resourcefulness of our students, have yielded positive results in consistent student involvement and learning.

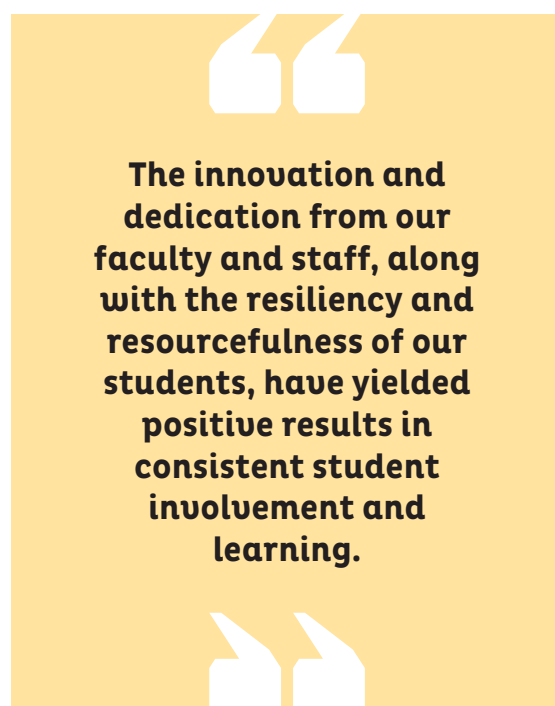
Our students are engaged with their coursework throughout the school day, working individually and in teams. They have adapted quickly with the use of technology to complete assignments, share their work, participate in class, and demonstrate what they have learned. Prayer and reflection time is incorporated into the school schedule, clubs meet regularly, hands-on projects such as ceramics and science experiments are completed, and our students are receiving all the necessary support required for an excellent high school education.

More than ever, we are teaching our students to adapt to the challenges of today. During this period of uncertainty, it is our responsibility to respond to the needs of the times as our founding Sisters of St. Joseph of Carondelet have always done, and adapt to our environment. We continue to foster a community of faith and solidarity and uphold the integrity of learning.

I ask you to pray for the St. Mary's Academy faculty and staff, so that we can continue the beautiful mission to serve our students. I ask for your prayers for our students, so that they can stay focused and finish this school year strong and always value being a lifelong learner and servant to the dear neighbor. You remain in my prayers.

Mary, Queen of Peace, Pray for Us.

*Mary Rose Batungbacal, Principal*



## IN THIS ISSUE

▶ From The Principal	2
▶ SMA Belles Student Life	4
▶ Alumnae Spotlight	6
▶ From The Alumnae Association	8
▶ From The Development Office	11
▶ Annual Listing of 2019 Contributors	12
▶ To Honor and Remember	18
▶ About The ECHO	19

## SAVE THE DATE

**Annual Gala, Celebrating 132 years!**  
**March 27, 2021, Sofitel Los Angeles, Beverly Hills**

New date, same wonderful honorees.

Sr. Maureen Doherty, CSJ

Heidi Duckler

Dorothy Gram '58

Jim Mills

Madelyn Murray '67

**Belles & Books - September 2, 2020**

"Barking to the Choir"

Fr. Gregory Boyle

Possibly a virtual event

### POSTPONED EVENTS

Alumnae Senior Tea - May 3, 2020

Rescheduled to Spring, 2021

Golden Grad Luncheon - June 6, 2020

Rescheduled to June 5, 2021

End of the Year Happy Hour and

Belles & Brushes - TBD

**Virtual Alumnae Engagement Activities**

Coming to a monitor, mobile device near you!

## ST. MARY'S ACADEMY 2019-2020

### BOARD OF DIRECTORS

**Elizabeth Stoddard PhD,**  
**Chairperson**

**Shelby Boagni '82**

**Carl Cohn EdD**

**Sarah H. Gacina**

**Rosemarie M. Hibler**

**Rick W. Lopez**

**Sr. Mary Ann Martin CSJ '70**

**Christina McAlpin MD '83**

**Lola McAlpin-Grant JD '59**

**Michael McNaught**

**Susan Miller**

**James Mills**

**Sr. Mary Agnes Nance CSJ '56**

**Sr. Ann Patricia O'Connor CSJ**

**Sr. Maureen O'Connor CSJ,**  
**Sponsored Liason**

**Tiffany Rollins '05**

**Sr. Marie Francis Schroepfer**  
**CSJ '61**

**Matt Vigil**

**Gwendolyn Wood**

# SMA BELLES STUDENT LIFE

## ANIME CLUB SHOWCASE



The Anime Club is very popular at St. Mary's Academy and continues to grow each year. The club focuses on learning about Asian culture through various activities such as, learning to play traditional Asian games, singing, watching Asian movies, and learning new dances that incorporate traditional and modern music from Asian countries. From what the club's members learn through the activities, they create an annual Anime Club/ Asian Heritage Assembly that is shared with the school's student body. This assembly is one of the most popular and appreciated events, completely organized and produced by the students. We thank Blue Tie, Nayeli G. '20, who has shared her creativity, leadership and organizational skills as the club's recent president and a member of the club for the past four years!

## BLACK HAIR FAIR

To celebrate Black History Month, SMA Belles put on a Black Hair Fair. Students showcased presentations on hair history, hair care, hairstyles, and hair products. This was an educational opportunity for everyone to come, ask questions, and learn from one another. Students worked very hard to create their presentations and provided a wonderful opportunity for classmates, faculty and staff to engage with one another. The festive fair environment included background music by Black female artists.



## BIG & LITTLE SISTERS VALENTINE'S DAY



This Valentine's Day, seniors and freshman enjoyed cupcakes and other fun treats during their lunchtime Valentine's Day party in the Reading Room/stage area of the Library. A sharing of the hearts between these two groups of "sisters!" For the sophomore and junior students, there were several mini "galentine's day" parties with candy and balloons at the festively decorated lunch tables, and all students sang along to a playlist made up of songs with "love" in their titles.



## CHEER TEAM

The dedication and commitment put forth by the school's talented 18-member Cheerleading Team this school year was evident not only as the Belles took the court for team sports, but at spirited sports rallies, Open House events, community parades, and for the Verbum Dei Eagles' football and basketball games. Our Cheer Team spent endless hours after school perfecting chants and stunts that enthusiastically got the crowds on their feet at school sporting events. Thank you to Cheer coaches Julia Wade and Jessica Jackson for their interest, time, and talent in leading these inspirational and entertaining students. GO BELLES!!



## BELLES & BEAUX

In January, the Student Leadership Council (SLC) organized and hosted the traditional winter formal dance, Belles & Beaux. This year's theme was Starry Night! The SLC members were inspired by Vincent Van Gogh's painting and filled the gym with twinkling lights and luxurious navy, gold, and silver decor. The Belles invited guests from Verbum Dei, Bishop Amat, Serra, and a variety of local public high schools enjoyed an evening of fun with unlimited use of a photo booth and dancing, and festive food, including a dessert bar and freshly spun gourmet cotton candy!

Blue Tie Senior, Nayeli G., was crowned Queen and joined her court of Princesses, Green Tie, Alijah N., Gold Tie, Daomi G, and Red Tie, Milka Z. This event is such a special tradition, and provides an opportunity for the students and their guests to dress up and dance the night away.



## BLUE TIE SENIOR RETREAT



Earlier this school year, the Blue Tie seniors spent their last high school retreat at Mt. Craggs in Calabasas. Their days were filled with themed talks, and small group discussion. Time was also scheduled for fun physical activities including paintball, laser tag, archery, and hiking. The retreat provided appropriate time to reflect on their last four years of friendships made and lessons learned, of spiritual development and hopes and dreams accomplished. It was a time to further grow the bonds of their Blue Tie sisterhood. As our seniors graduate very soon, our prayers and good wishes, along with heartfelt congratulations are with each one!



# ALUMNAE SPOTLIGHT



**DOLANN M. ADAMS - RED TIE '99** While at SMA, Dolann participated in cross country, cheerleading, track, student government and various school productions and events

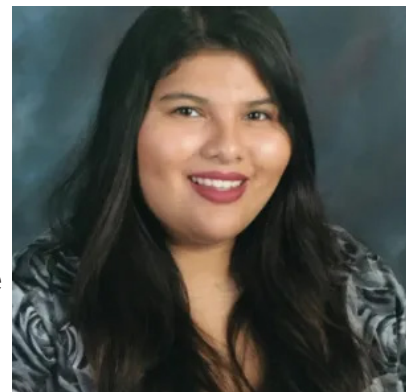
After graduating, she attended the University of California, Berkeley where she graduated with a dual degree in Mass Communications and Theater & Performance Studies. The strong educational and extra-curricular foundation provided by SMA motivated Dolann to continue to engage in philanthropic activities while in college and gave her the confidence and tools to excel both academically and socially.

Dolann went on to pursue a Master of Fine Art Degree in theater from the Actors Studio Drama School at Pace University in New York City. She has been seen on the popular daytime soap opera, Days of Our Lives, and several national commercials, in addition to using her vocal talents for voice over work in the areas of animation, story narration and audio books.

Currently, Dolann serves as the Director of Special Programs at the UCLA School of Theater, Film and Television Department of Theater. Dolann's love of the arts along with her management skills, has allowed her to grow the current pre-college summer institutes, while creating and executing new department programs that inspire today's youth. We are proud of this exceptional Red Tie! If you would like to make a donation to support a current Belle to attend this summer program at UCLA, please visit [www.smabelles.org/give](http://www.smabelles.org/give)

**MITZUKY ORELLANA - BLUE TIE '12** Mitzuky Orellana, a participative and involved member of SMA's Health Careers Program, took advantage of the many opportunities the Program offered. During her clinical experiences in high school, she was introduced to the field of social work.

Through her college studies at Mount Saint Mary's University, Mitzuky learned how public policy directly affects social services. She was inspired to learn more about how she could influence her community directly through social work and on a large scale, through policy. She continued post graduate studies at USC, with the goal of pursuing a career committed to social justice and enhancing the well-being and the quality of life of individuals who are impacted by social disadvantages. Mitzuky shares if she hadn't gotten involved in high school and college, she wouldn't have found her true passion. "Getting involved with clubs and extracurricular opportunities opens so many doors, and provides leadership experience."



In 2018, Mitzuky completed her academic goal of achieving a Masters of Social Work at USC. She is currently a Residential Therapist at St. Anne's, Short Term Residential Therapeutic Program. Throughout her academic and professional paths, Mitzuky follows her favorite piece of advice, "do things that make you happy, and be kind to those around you." Mitzuky is certainly "serving the dear neighbor!"



# ALUMNAE SPOTLIGHT



**CHARLOTTE COOK - GOLD TIE '66** Charlotte was recently inducted into the National High School Track & Field Hall of Fame. As a member of the Compton Track Club, while in middle school, Charlotte's love for competitive running and natural athleticism continued through her high school days at St. Mary's Academy. An excellent Belle athlete, Charlotte rose to fame as one of the best middle distance high school track athletes of her time. In addition to running track for St. Mary's Academy, Charlotte was an integral participant on the school's Varsity Volleyball team and a proud and most worthy member of the school's Letterman Club. Competing for the Los Angeles Mercurettes in 1966, Charlotte became a 440/880 legend with seven National High School records, most of which were also new American

records, plus a 54.2 440 world indoor record!

Charlotte and her Gold Tie classmates were the first graduating class from the Inglewood SMA campus, Spring of 1966. Charlotte went on to attend Texas Southern University where she was recognized by the Amateur Athletic Union with a "five star" for five all-comers records set in 1966 by the AAU.

Charlotte was among ten individuals inducted into the third class of the National High School Track & Field of Fame on March 12, 2020 at the New York Athletic Club. All of us at St. Mary's Academy are so proud of this athletic Gold Tie for her accomplishments on and off the track! Congratulations Charlotte!

**DONYALE HALL - GREEN TIE '85** Donyale, "Donni" Hall, is a supportive and enthusiastic alumna. A proud native of Los Angeles, for almost 20 years, Donni has worked for the City of Los Angeles in various functions and departments. In 2007, she began working at the City's Emergency Management Department (EMD) as a Senior Project Coordinator and today is the Grant Administrator for EMD. Donni's ability to successfully multi-task allows her to manage simultaneous grants totaling over two million dollars in funding, as well as procuring equipment and supplies. It is with deliberate and diligent effort that she ensures grant requirements, guidelines, contractual verbiage and criteria are being interpreted and handled in a timely and efficient manner in accordance with policies, procedures and expectations. In her role, Donni assists with the education, preparedness and readiness of Angelinos for natural disasters and other emergency response crisis events. Her role is pivotal, particularly now with the latest emergency, COVID -19.



Donni holds a bachelor's degree from UCLA, and dual master's degrees from Keller Graduate School of Management in Business Administration and Project Management.

Donni remains a loyal and active volunteer of her college and St. Mary's Academy Alumnae Associations. As time allows, Donni reads and travels, and has a goal to visit all 50 states. She has fewer than 20 to visit! Thank you, Donni, for being a supportive and participative Green Tie alumna!



# FROM THE ALUMNAE ASSOCIATION

## ALUMNAE EVENTS

### FALL ALUM GATHERING

On a beautiful day, last Fall, alumnae from near and far, gathered at the lovely Brookside, Los Angeles home of Madelyn (Red Tie, 1967) and John Murray. Red, Blue, Green and Gold Ties Alumnae caught up with old friends, met new friends, reminisced about high school days, joined in group photos and listened intently as Jeanne Fisher, Director of Development, shared with the group the great things happening at their Alma Mater. The Alumnae gatherings provide an opportunity to reconnect with SMA sisters and keep up to date with the current Belles' learning environment. If you'd like to host an Alumnae gathering at your home, please contact the Development Department.

### ALUMNAE HAPPY HOUR AT EUREKA! HAWTHORNE

On January 23, alumnae gathered at Eureka! Hawthorne for a happy hour gathering. Catching up over delicious appetizers and drinks, Belles of all tie colors, and from several decades enjoyed each other's company. Plan to join us at our next happy hour event and bring your classmates!

### CLASS OF 1969 REUNION

The Class of 1969 Green Ties' 50-year reunion was held at the Proud Bird Restaurant, Los Angeles, on October 26, 2019. Seventy-five classmates attended this incredible event, where they laughed, cried, danced, sang, reminisced, and most of all, reconnected. Their motto, the class of "Courage and Love," was still reflected in their life stories 50 years later. They displayed class memorabilia and honored and remembered those classmates who had died. The Green Ties sang their class song, pep song, and the Alma Mater, and shared stories and memories, which strengthened the bond that connected them as Belles so many years ago. Several reflected how the reunion allowed for rekindled friendships, and all were grateful for this special time spent together.



The class made a significant and very much appreciated donation to St. Mary's Academy for current Green Tie students' scholarships. Congratulations Class of 1969! "Green Ties Forever"



# REUNION UPDATES

**THE CLASS OF 1970** The Gold Tie class of 1970 are postponing their 50 year reunion until Spring of 2021. The Reunion Committee continues to plan for the event. Many class members have committed to joining in for the momentous celebration that will take place at the Embassy Suites in El Segundo. If any Gold Tie class member has not yet received a formal invitation, or for more information, please contact the class reunion committee chair, Amalie Brown-Orme, [amalieorme@gmail.com](mailto:amalieorme@gmail.com) or 818-261-2622.



**THE CLASS OF 1980** The Blue Tie class of 1980 have placed their 40 year class reunion on hold. As the current health situation unfolds, plans will proceed with an event possibly on the school's campus. The class of 1980 would like the Blue Tie class of 2020 to be included in their reunion celebration. For updates on the Blue Tie class of 1980 reunion, please contact Antoinette Adeniji at [Aadeiji62@gmail.com](mailto:Aadeiji62@gmail.com)

**If you and your class are planning a class reunion, or would like information on planing a class reunion, please feel free to reach out to Karen Vetter in the Development Department at [kvetter@smabelles.org](mailto:kvetter@smabelles.org) or 310-674-8470 ext. 322**



# FROM THE ALUMNAE ASSOCIATION

## REST IN PEACE

**Let us remember in  
prayer the following  
members of the  
SMA family**



Georgia Farmer Salvino '55  
Barbara Ortiz Acosta '54  
Cheryl Bordenave Aubry '64  
Rosa Angelica Barba  
(Mother of Angela Barba '13)  
Margaret Rude Bercaw '55  
(Sister of Theresa Rude Stewart '63)  
Margaret Bittner '74  
Kathleen McCrimmon Brown '60  
Denise Valette Debord '65  
(Sister of Renee Valette '60, Jeanne Breunig  
'61, and daughter of Catherine Waldner  
Valette '35)  
Jane Husting Fagan '50  
Anne Lynch Falotico '47  
Sheila Enright Ferris '56  
Joan Alice Schneider French '52  
Sandra Sherrod Grafell '68  
Jeannette Grelck  
(Mother of Linda Grelck Serna '65)

Mary Patricia Broderick Hill '45  
Sr. Jean Marie Kirby OCD '46  
Marjorie Ward Koeller '47  
John McCormick  
(Brother of Cathy McCormick Cuneo '72 &  
Patty McCormick Logan '74, and brother-in-  
law to Peggy Garner McCormick '70)  
Grace Young McMorrow '54  
Jean McNeal  
(mother of Yvonne McNeal '72, former SMA  
Principal)  
Patricia Sherrod Newton '66  
Beverly Wheeler O'Donnell '48  
Segundo Orellana  
(Father of Mitzuky Orellana '12 & Andrea  
Orellana '14)  
Sr. Judith Peters CSJ '56  
Linda Philpott '76  
Frank Serna  
(Husband of Linda Grelck Serna '65)  
Sally Flemming Voller '51

## REST IN PEACE

### COACH RENE ANDERS ANDERSON

**October 1952 - December 2019**

On February 9, 2020, the SMA community gathered on campus to honor the life and memory of Rene Anders Anderson, Coach Rene.

Coach Rene served faithfully at St. Mary's Academy for over 20 years as the Track & Field coach, Assistant Basketball coach, and was also called upon, as needed, to substitute in the classroom. During his tenure as a Track & Field coach, the team won several League, CIF and State Championships.

Coach Rene was committed to the mission of St. Mary's Academy and the students he encountered. As a dedicated coach, he was always proud to see his students matriculate to college and compete in sports.

When his youngest daughter, Amber, was of age for high school, he knew she had to become a Belle. It was an honorable moment for him to see his Blue Tie daughter walk across the stage to receive her diploma, June, 2016.

His physical presence will be missed but his memory will remain with his fellow-coaches, peers, and his student athletes. "Though your days among us were too brief and our grief at your loss is never-ending, we draw comfort from the knowledge that you have found safe refuge in the Lord."





# FROM THE DEVELOPMENT OFFICE

## CELEBRATING OUR ALUMNAE - JULIE HARRIS NEIGER, RED TIE 1971



Excelling in her high school studies at SMA, Julie went on to Loyola Marymount University, graduating cum laude, in Theatre Arts. She furthered her education at the University, receiving an Elementary Teaching Credential and Master of Education - Reading. Julie, a life-long learner and teacher, continues to work with students of all ages - elementary, college, fellow educators and parents. As a first-through-sixth grade educator, she has worked in a variety of school settings. In 2004, Disney nationally recognized Julie for her creativity in teaching. In 2012, she was honored as a finalist for San Diego County Teacher of the Year. After 38 years of service as a public- school educator, Julie retired from the Poway Unified School District in 2014.

Julie now serves as an adjunct professor in the School of Education at Pont Loma Nazarene University, and as a lecturer for the College of Education at California State University, San Marcos, where she supervises teacher candidates in their clinical practice. She is also an educational consultant, conducting parent education classes and teacher/staff training in-services.

With her love for, and belief in the importance of education, Julie set up an SMA Endowed Scholarship to assist with the costs of tuition for an SMA student. Over a period of 5 years, Julie built the Endowment\* and this fall a student will be the recipient of her thoughtfulness and kindness. Being a loyal Belle, Julie is working with her Red Tie sisters in planning their 50-year class reunion. Thank you Julie, for all you do for your Alma mater!

\*An endowment is a permanent fund that is restricted and of which the principal is preserved. The contributions are invested and a determined percent of the portfolio is used for purposes restricted by the endowment fund. For more information, please contact the Development Department at 310-674-8470.



### AMAZON SMILE

AmazonSmile is a simple way for you to support your favorite charitable organization every time you shop, at no cost to you. When you shop at [smile.amazon.com](https://smile.amazon.com), you'll find the exact same low prices, vast selection and convenient shopping experience as Amazon.com, with the added benefit that Amazon will donate 0.5% of your eligible purchases to the charitable organization of your choice. You can choose from over one million organizations to support. If you'd like to support St. Mary's Academy, you can use the link below.

**SMA's unique charity link is: <https://smile.amazon.com/ch/95-2097145>**

# ANNUAL LISTING OF 2019 CONTRIBUTORS

THE GENEROUS GIVING OF OUR ALUMNAE AND FRIENDS SUPPORTS ST. MARY'S ACADEMY AND OUR STUDENTS TO BE ALL OF WHICH THEY ARE CAPABLE. THIS LISTING RECOGNIZES THOSE WHO HAVE MADE GIFTS BETWEEN JANUARY 1, 2019 AND DECEMBER 31, 2019. THESE ARE OUR INVALUABLE PARTNERS IN MISSION FOR WHOM WE ARE VERY GRATEFUL.

## The Founder's Circle (\$50,000 and above)

Anonymous  
Anonymous  
Bill Hannon Foundation  
California Community Foundation  
Catholic Education Foundation of Los Angeles  
Dan Murphy Foundation  
Payden & Rygel  
The Joan Barber Trust  
  
The John H. and Cynthia Lee Smet Foundation

## St. Mary's Circle (\$10,000 - \$49,999)

Patricia Adams '77  
The Ahmanson Foundation  
Anonymous  
Robert Bartshe  
Caruso Family Foundation  
Christopher and Susanne Clark  
Daughters of Charity Foundation  
The Joanne Marie & Marcel George Foundation  
Dorothy W. Gram '58  
The Green Foundation  
The Los Angeles Challenge Corporation  
The Family of Lidielte Maduro '51  
George H. Mayr Foundation  
Operation Progress Student Assistance  
Foundation  
The Carolyn I. Seitz Trust  
Sisters of St. Joseph in California  
Success Through Education Inc.

## St. Joseph's Circle (\$1,000 - \$9,999)

Phyllis Lieb Ambrose '57  
Marianela Zamora Anastasi '74  
Andern Educational Research  
Anonymous  
Anonymous  
Deirdre and John Apablasa  
Michael and Percenia Beasley  
Benevity  
Don and Ellen Perches Berry '76  
Shelby Dawn Boagni '82  
Matthew Brady  
Barbara H. Clark

Carl A. Cohn Ed.D  
Karen Cova '77  
Maureen Tobin Cronin '71  
Robin Da Vinci '69  
Mary O'Brien Thaler Dillon '56  
Adolf K. Eitner  
The Scott and Charldene Schneier  
Foundation '68  
John and Jeanne Fisher  
Mary Vollmer Forster '53  
Friends of St. Lawrence of Watts Youth Center  
Donna La Cour Garza '62  
Maricelest Mathewson Grant '66  
Sallie Sanguinet Grippo '54  
Daria Hall '84  
Janice McGrath Hall '65  
Ron and Anne Hansen  
Laura Hewlerr Haydel '64  
Antonia and Christopher Hogan, MD  
Michelle Ryan Horejsi, MD '75  
INEOS Polypropylen, LLC  
Elyse Kaiser  
Sr. Kathleen Kelly, CSJ '52  
Robert and Bernita King  
Kipp LA Schools  
Kathleen Kelly Kirk '65  
Jack Knight  
Mr. Matthew Krieger  
LA Lakers Youth Foundation  
Lewis A. Kingsley Foundation  
Dolores Gonzalez Lobina '64  
Thomas and Sharon Sloan Malloy '57  
The June Kamimoto-Minami Memorial  
Scholarship  
Dr. Christina McAlpin, MD '83  
Michael McNaught  
James Mills  
Mary Beth Shafer Wong Mizroch '64  
Mary Lou De Soto Montagna '58  
Mother of Sorrows School  
Mt. Carmel Alumni Foundation  
Madelyn Faustina Murray '67  
Julie Harris Neiger '71  
Christina Neville '69  
Rene Nourse '72  
Patti and John O'Keefe  
Amalie Brown Orme, PhD '70  
Luc Paquet  
Helen Polito '69  
Dr. Greta Pruitt

Michele Strode Rigsby Pauley '78  
Louanne Robb Fay '50  
Gerard T. Robinson  
Joseph Ross  
Marguerite Roth '56  
Alice Ashimoto Sato '61  
Mary Peschke Schneider '68  
L.S. and Anna Mary Shoen, Bill and Mary Carty,  
and Paul and Berta Steinbrenner Fund  
Paula Brogan Simoncini '63  
Spencer Foundation  
St. Mary's Foundation  
St. Patrick's Catholic Church  
Shawn Stang '92  
Elizabeth A. Stoddard, PhD  
Gloria M. Stoica '46  
Cecelia Schmahl Stratford '60  
The Margaret O'Connor Trust  
Ann Hurley Thomas '55  
Collen O'Meara Thomas '56  
Linda Tobin  
Radamés and Martha Hernandez Toro '75  
Donna Hanmore Tucker '73  
USC Educational Partnerships  
Matt Vigil  
David Walsh  
The Keenan Family  
William H. Hannon Foundation  
Wonderful Giving  
Norene Murray Zapanta '65  
Michael P. Zietsman

## Supporters of the Mission (\$500 - \$999)

Marilee Alessandra  
Anonymous  
Peggy Williams Belcher-Dixon '62  
Shelley Brazier '67  
Arleen Meyers Christensen '57  
Sara Jennifer Cotton  
Robin Schluter Davis '61  
Nancy DeLong '58  
Mary Roberta Hensley Edwards '61  
Vicki Giles Fabre '66  
Kelly and Lisa Farland  
Firefreight Inc  
Micki Giles Flowers '66  
Sarah and Sanjin Gacina  
James Garrison



Susan Moore Haffley '61  
 Marilou Hamill  
 Holly Hayes '70  
 Angela Hewlett-Bloch '74  
 Alma D. Hicks  
 Margaret Moore Hodgson '43  
 Virginia Valle Isabell '68  
 Syliva Flores Johnson '63  
 Margaret Kish '74  
 Patricia G Koch  
 Rosemary Beauclair Kriste '65  
 Margaret LeDuff  
 Denise M. Lytle '67  
 Josephine Mahoney '60  
 Elizabeth Mears  
 Murphy's Bowl, LLC  
 Carolyn and Hal Nelson  
 Hilary Norton  
 Sr. Ann Patricia O'Connor, CSJ  
 Sr. Maureen O'Connor, CSJ  
 Annette Czuleger O'Neill '52  
 Pat Sheehan Peterson '62  
 Marsha Nicholson Phillips '75  
 Rosemary Wooldridge Plue '53  
 Christine Hickman Ragen '67  
 Raytheon Company  
 Dr. Norma J. Rios, DVM '78  
 Elizabeth Lagahit Rollice '65  
 Mary Ann Miller Root '63  
 Sinclair, LLC  
 Nancy Spidell  
 St. Joseph School  
 St. Lawrence of Brindisi Catholic School  
 Patricia Bohache Strait '67  
 The Burton G. Bettingen Corporation  
 The Robert Group  
 United Way Worldwide  
 Alice E. Villalobos, DVM '64  
 Nicole Webb '87  
 Nicole Yeldell Butts '87  
 Ray and Stephanie Yinger  
 Your Cause Employee Giving

## **Protectors of the Legacy (\$250 - \$499)**

Victoria Lewis Adams '76  
 Mary Ann Strouts Ammons '63  
 Anonymous  
 Anonymous  
 Anonymous  
 Camille Barasa Bauer '67  
 Michaele Calvin Bienvenue '62  
 Janet Pasini Black '55  
 Claudia A. Bogner '63  
 Elena Bove EdD  
 Jean M. Brunelli '52  
 Maria Kolostori Buhbe '62  
 Marita Morgan Caruso '55  
 Delia M. Cotter '68

Marie Lousia Davila-Woolsey '64  
 Velma Sanchez De la Rosa '85  
 Alice Delatorre '56  
 Delta Airlines Foundation  
 George and Ida Dotson  
 Carol Gantner Dougherty '56  
 Patricia Laner Flavin '60  
 Dawn Ferry Friedman '58  
 Deana Dupre Galloway '85  
 Theresa Gartland  
 Dolly Gee '77  
 Margaret Del Castillo Gostyla '63  
 June Karlinski Green '61  
 Donyale Hall '85  
 Laurence Hall  
 Faith Halligan-Harper '73  
 Tanya Harris '90  
 Rosemarie Hibler  
 Michelle Hicks '77  
 Autumn Holmes '83  
 Frances Allen James '64  
 Dolly Cottrell Johnson '63  
 Jeanne Hardemion-Kemp '82  
 Rosemary Kennedy McAlary '74  
 Stephanie Mayer Kenney '70  
 Anita Cienfuegos Larson '63  
 Barbara Gaspard Lawson '69  
 Denise Adams Legaux '68  
 Richard Lins  
 Rick Lopez  
 Vivian LoPizzo '61  
 Cathy Lugo  
 Susan Donovan Manzo '58  
 Veronica Carvalho Marin '63  
 Jo Ann Powers Medica '54  
 Connie Avery Meigs '65  
 Donna Miller '76  
 Denise Mozee-McKnight '83  
 Celina Nourse  
 Leslie Nourse  
 Patricia Kozlowski O'Connor '56  
 Georgean Olsen '58  
 Eileen Ambrose O'Neill '56  
 Marianne Padden '74  
 Mary Reveles Pallares '50  
 Jennie Park  
 Diane Phillips '54  
 Roslynn Piernas-Hills '70  
 Leslie Felch Pittman '62  
 Patricia Slavin Powers '54  
 Rosalynne Valley Price PhD '67  
 Michele Rice  
 Alison M. Riggs '52  
 Marianne Dosa Saraceno '71  
 Bishop Joseph Sartoris  
 SchoolsFirst Federal Credit Union  
 Bill and Janet Kelly Schultz '61  
 Dione Tucker Seals '79  
 Ethan Smith  
 Bernadette Dominique Soter '67

Southwest Escrow Corporation  
 Susanne Spangler '68  
 Diane Steinberg '70  
 Catherine Thierry Stelly '59  
 Cecilia DeSoto Stevenson '57  
 Scott Swanson  
 Lydia Beatrice Thomas '68  
 Dorothy Determan Thompson '56  
 Mary Vavrik '62  
 Nicole Welch  
 Theresa Welsh '73  
 Gwendolyn Wood  
 Brenda Woods-Pembroke '70  
 Stela Marapese Ziegler '56

## **Investors of the Future (\$100 - \$249)**

Anita Abascal '64  
 Marleen Daigneault Abel '55  
 Dolann Adams '99  
 Kathleen Allen Aldrete '55  
 Ingrid Alexander '85  
 Maria Sandra Lopez Alvarez '77  
 Connie Loyacano Anctil '60  
 Kristopher L. Anderson  
 Penelope Anderson '62  
 Cecelia Andrews  
 Anonymous  
 Anonymous  
 Keith Anyon  
 Maria Apablaza  
 Jo Ann Evans Ardanaz '56  
 Lorraine Gaspard Armelin '65  
 Joan Meehan Armstrong '53  
 Mary Pat Lett Ashby '61  
 Alexandra Aufderheide  
 Debra Bailey  
 Patricia Bamatre-Manoukian '63  
 Sheila Sullivan Banken '49  
 Ronald Banks  
 Anne Patton Bartlett '75  
 Marilyn Becker, DC '74  
 Georgia Maloney Belardi '51  
 Debra Bennett '67  
 Mary E. Binning  
 Joan K. Blankenship '71  
 Nancy Jo Buss Bonds '61  
 Pedro Bordenave  
 Terry Bordenave '89  
 Karen Boyd '79  
 Linda R. Bartolomucci '65  
 Marchette Henry Brackett '88  
 Dr. Rosalie Haberstroh Burmeister, DP '65  
 Karen Bushman '73  
 Cynthia Galbraith Buzan '60  
 C.I.F. Southern Section  
 Jean Knoernschild Campbell '68  
 Martha Borrego Corrillo '68  
 Norma Figueroa Caswell '65  
 Traci Kadlec Chavez '82

Marian Martin Christiana '72  
 Kathleen Cleary '59  
 Helen Clemmons  
 Loretta Stellar Cobb '56  
 Community Partners  
 Diann Shanahan Constestabile '54  
 Rosemarie Lasko Cook '55  
 Annette Cooper '67  
 Norman and Nancy Cravens  
 Linda Aldrich Crowe '61  
 Stephanie Cubba  
 Cristina Cueller  
 Sr. Antoinette Czuleger CSJ '53  
 Peggy Daste '67  
 Clare Wollman Davis '66  
 Dr. Eartha Davis, MD '82  
 Katessa Charles Davis '81  
 Marlene J. Davis '51  
 Cynthia De Nuno '70  
 Sr. Annette M. Debs, CSJ  
 Belinda Chelette Deslonde, RN, BSN '76  
 Laurie J. DeWitt '69  
 Joyce Porter Diemer '49  
 Mary Ann Krier Dockstader '64  
 Ruth Berndt Dodrill '56  
 Anita Morales Dolce '55  
 Donate Well General Fund  
 Sheila Dvorak Donohue '60  
 Marijo Demiceli Douglass '63  
 Michele J. Dunne '63  
 Julie Dupre '77  
 Shellece-Jeannette Earles '85  
 Kamala Easton  
 Leslie Johnson Edmonds '64  
 Letitia Ellison-Cooper '87  
 Janet Akin Erland '68  
 Sr. Angela Faustina, CSJ '64  
 Theresa Donohue Fawcett '69  
 Kathleen Doyle Felix '44  
 Kathy Hudson '78  
 Ingrid Finley Scott  
 Loraine Lyman Fiore '72  
 Phyllis Maggio Fish '54  
 Dr. Jana D. Flowers '69  
 Mary Margaret Cramer Franco '54  
 Mishanda Freeman '98  
 Christine Fregulia '66  
 Jewell Gardner Frey '56  
 Elaine Ducharme Froome '64  
 Christine Uchida Fukunaga '68  
 Valerie Lark Garrett '63  
 Anna Feeney Garrity '70  
 Diane Williams Gilmore '66  
 Diane M. Glas '73  
 Nancy Martignoni Gleason '73  
 Charlotte Ducros-Gooch '65  
 Susan Forve Good '66  
 Anita Kramer Gorder

Bonita Gordon '59  
 Darrell Goss  
 Shannon Green and Brett Hoover  
 Mary Schott Griley '54  
 Luis and Mary Ann Leonardd Guerena '61  
 Laura Camberos Gunn '01  
 Donna Kalal Hakala '62  
 Lucinda M. Hall '76  
 Nancy Hall  
 Paula Child Hammerschmitt '69  
 Mary McDermott Hardy '57  
 Alexandria Harpole '00  
 Lolita Harris '80  
 Cheryl Hartshorn '66  
 Belinda Battle Harvey '81  
 Heidi Duckler Dance Company  
 Patricia Call Heinlein '67  
 Inge Rittner Heisey '74  
 Mary Pat Morgan Hely '71  
 Tyesha Hemmans  
 Peggy Henderson '69  
 Cheryl Hines  
 Tasia Hines 03  
 Pamela Humphrey Hoefling '65  
 Debra Gudino Holbrook '69  
 Mary Roberta Long Holland '55  
 Dana Jonuska Homan '62  
 Annette Williams Hopkins '64  
 Joann Vosika Hudak '50  
 Victoria Loyacano Hurley '66  
 Sr. Mary Beth Ingham, CSJ '69  
 Inglewood Park Cemetery and Inglewood  
 Mortuary  
 Mary Ann Chicco Jackson '61  
 Marynell Jelinek '76  
 Dale Wright Jenssen '62  
 Leah Campbell Johnson '94  
 Marilyn Johnson '65  
 Patrice Johnson '68  
 Carol Jones  
 Eileen McCarthy Jones '51  
 Eileen Stockmeir Jones '67  
 Carol Wheelhouse Juge '56  
 Suzan Watson Katz '61  
 Sr. Darlene Kawulok, CSJ  
 Candace Pintner Kilbane '65  
 Jean Kimball '74  
 Linda Novikoff King '63  
 Norma Stang Kirkpatrick '89  
 Roger F. Knight  
 Adrienne A. Knox '68  
 Pavel Krapivin  
 Jackie Pearson Labouff '54  
 Olivia Grieco Labouff Trump '60  
 Carol Dvoran Lancaster-Donigan '63  
 Corlis Chevalier LaDuff '69  
 Mary Ellen Neville Lepper '59  
 Judith Merino Light '59  
 Gayle Gorman Lightfoot '69

Julie Curo Loera '76  
 Colleen Tobin Love '72  
 Richard and Regina Podas Lujan '54  
 Bernice Fijak Lynch-Bajada '59  
 Caitlin Mace  
 Jacquelyn Andrews Mack '65  
 Martha Davidson Mackel '56  
 Deanna Dugas Maechling '55  
 Ann Magovern  
 Kathleen Baker Mallano '56  
 Maria Bernstein Maloney '52  
 Romerol T. Malveaux '65  
 Rosemary Strano Mancuso '59  
 Barbara Marritt '60  
 Evalyn Beals Martinez '62  
 Maria Martinez '54  
 Susan Martinez '78  
 Mary McIntyre Marveous '66  
 Dr. Kathleen Creutz McCann, PhD '51  
 M Joanna McClure '54  
 Peggy Garner McCormick '70  
 Nancy Conrad McCulloch '70  
 Dolores McGrath  
 Patricia Ann Felch McKinnon '65  
 Lisa McLean '87  
 Latina McWilliams-Smith '88  
 Theres Fetter Menard '72  
 Merrill Lynch  
 Richard Meyer  
 Carole Breen Meylan '53  
 Martha Romero Mihalovits '58  
 Erni Bridges-Miller '68  
 Julie Miller  
 Sharon Cummings Miller '61  
 Donna Zahyna Miodovski '73  
 La Juana Mitchell, CPA '70  
 Paula Chapparo Mohlenbruck '63  
 Candace M. Montgomery '06  
 Angelique C. Morales '97  
 Paula Morgan-Maddox '54  
 Anne Brewer Morley '61  
 Teresa Verdugo Moses '58  
 Margaret Moser '66  
 Carolou Giovannoni Munson '70  
 Dr. Eugene Nah, PhD  
 Gloria Prietto Navarro '59  
 Bertha Barauna Nelson '56  
 Maryann Gillilan Notari '58  
 Leslie O'Rourke '63  
 Molly O'Brien Phillips  
 Elynor Ruffo Olivadoti '65  
 Sr. Margaret Mary O'Rourke, CSJ '48  
 Barbara Foxen Orozco '46  
 Dorie Anne Valenzuela Ory '62  
 Sheila Tully Pactol '58  
 Isabella L. Perrin '64  
 Mary Ann Perryman '66  
 Long Pham  
 Nancy Mackprang Phillips '73



Patricia Phillips  
 Marie Bruce Poole '58  
 Sally Youle Powers '63  
 Anita Moreno Prietto '53  
 Janet Horejsi Prukop '57  
 Mary Purcell '65  
 Mary Collette Boland Quinn '59  
 Pat Ann St. Onge Ranftl '63  
 Margaret McCarthy Reeves '61  
 Helene Chenier Reid '60  
 Sharon Wunderlich Reid '65  
 Dr. Virgie Blackmon Rentie, EdD '79  
 Irene Gayer Rittner '63  
 Carol Noreen Roarty '57  
 Virginia Lee Robinett '60  
 Dana Stubblefield Robinson '92  
 Keri Walker Robinson '77  
 Colleen Moore Rodriguz  
 Geraldine Burnell Roe '45  
 Marianne Hill Roth '73  
 Sharon Evans Ruddy '60  
 Rita Blecksmith Ryan '48  
 Roberta Salas '91  
 Yared Salgado Oliveros '98  
 Sally Jo Evans Sanguinet '62  
 Lilia Del Rio Sarmiento '73  
 Yvette Jaurequi Saville '72  
 Karen Lussier Schaefer '60  
 Rosanne Tripp Schnaider '63  
 Dorothy Michaud Schwing '54  
 Margaret Willging Scott '67  
 Consuelo D. Segura '59  
 Patricia Seidenbaum '55  
 Kathleen Williams Serrano '67  
 Jill Sheinberg  
 Kathleen Gallegos Shepard '68  
 Eulalee Lundgren Siler '62  
 Mary Brennan Simmers '79  
 Benita Stanley '76  
 Lauren Stanton  
 Vivienne Langenbach Stephens '46  
 Jacqueline Bigelow Stevens '53  
 Patricia Perkins Stevenson '76  
 Diana Waren Stone '55  
 Mary Essy Stoughton '60  
 Patricia and Tom Sugrue  
 Elizabeth Cook Summers '53  
 Evonne Sweeney '04  
 Charlotte McDowell Tagge '53  
 Megan Schluter Tatu '74  
 Sally Selby Tavernelli '65  
 Christine Briscoe Taxier '73  
 Mae Taylor-Johnson  
 Dorothy Voelckel Teague '63  
 The Boeing Company Matching Gift Program  
 Mary Thomas '61  
 Michael Thum  
 Donna Tracy '68  
 Arnette Travis

Wenonah Valentine '72  
 Katherine Wise Van Cleave '69  
 Mary Lou Starr Vanderlip '62  
 Karen Vetter  
 Theresa McPolin Vicelja '49  
 Marcia Melton Wade '70  
 Daphne K. Walker, M.D. '77  
 Mary Clare Gorman Walker '62  
 Susan Cleary Wandtke '60  
 Jewel Wirtz Welles '54  
 Donna Ehrlich Wendl '69  
 Elizabeth Wenner-Tomaszewski '61  
 Ann Bouchard Westigard '55  
 Catherine Craven White '66  
 Jacqueline Adams White '63  
 Maryann Cuccio Wilder '66  
 Shelley Brazier '67  
 Carmella Galante Wilson '66  
 Sandra Mueller Winzenread '61  
 Gail Wise '75  
 Christine Wood '89  
 Drew Wood-Palmer '15  
 John and Joan Worden  
 Eleanor Madrid Worthen '55  
 Kristin Yinger

## **Belle Circle** **(\$50 - \$99)**

Elisabeth Henderson Amend '69  
 Alejandra Angel  
 Anonymous  
 Carol Norman Apaloo '66  
 Carroll Gorman Ball '59  
 Nicole Bradley Bergeron '90  
 Mary Jo Guthrie Billups '63  
 Colleen Brady  
 Deanna Yonika Brandt '60  
 Benita E. Brazier '64  
 Gloria Trujillo Brogley '50  
 Robyn A. Buckner '98  
 Christina Bowe Byer '81  
 Kathleen Feeley Cahill '56  
 Anne Miyashiro Chilcott '73  
 Marjorie Betz Coleman '55  
 Gail Schoepe Colliard '54  
 Mr. Ronald Crimins  
 Patricia Mooney Crowley '56  
 Paulette Dancause-Paulsen '65  
 Elizabeth Lechner Davies '56  
 Teresa Moreno De Stefano '52  
 Susan McKindley Deogracias '73  
 Anita Elduayen '62  
 Rebecca Esobar '70  
 Ludeanne Fischer  
 Joan Nickell Fitzsimmons '47  
 Bernadette Salvo Flannery '57  
 Sr. Margaret Foppe, CSJ '57  
 Gloria Gonzalez Forrest  
 Michelle Franklin '85

Peggy Cassidy Friedman '63  
 Judy Bryant Fullenwider '57  
 Charles Gartland  
 Paula Graber Giangrande '71  
 Sally Duffy Gilliland '60  
 Janne Corlett Gish '69  
 Cynthia Goins '74  
 Heidi Goodwin '73  
 Marilyn Hatfield Grimm '60  
 Mary Boyles Harker '71  
 Joyce Harrison '53  
 Michelle Hartwell '75  
 Marilyn Hornung '56  
 Sr. Ellen Hunter, SSS '57  
 Doreen Irish '66  
 Kathryn Morgan Itzel '66  
 Marlentree Jackson '83  
 Leonard Jefferson  
 Mary Moriarty Johnston '49  
 Dolores Healy Jordan '49  
 Sharon Julien  
 Marleen Wess Jurick '59  
 Shirley Schuetz Kilcoyne '49  
 Thomas Leo King  
 Catherine Knight  
 Kroger  
 Beth Kehoe Krzywicki '69  
 Ja'nelle M. La Croix '01  
 Eva Artukovich Majich '48  
 Norma Gonzalez Marrin '63  
 Mario Martin  
 Sr. Mary Ann Martin, CSJ '70  
 Patricia Buckley Marton '51  
 Lauren McConner '99  
 Caroline McKenzie  
 Rosemarie Denny McKowen-Miller '61  
 Yvonne Duenes Moeller '58  
 Richard Monteilh  
 Carla Montgomery  
 Eleanor Gillett Moreno '55  
 Mary G. Morley  
 Yolanda Morrow '54  
 Jeff Muir  
 Monica Murphy '69  
 Elizabeth Navarroli '55  
 Herminia Morales Neblina '87  
 Martha Beiriger Nedom '63  
 Rosemary Geltz Norling '53  
 Marilyn Jamison Pappas '56  
 Marie Smith Paul '66  
 Shirley Seiler Paul '53  
 James Peaper  
 Rose Oates Pearson '71  
 Jean Utterback Pennypacker '65  
 Camilla Munton Picard '48  
 Theresa J. Porche '75  
 Patricia Foppe Rauber '58  
 Catherine V'Soske Reed '69  
 John Reyes

Rosie Rogers '81  
 Dr. Sylvia Sherno Rothman, Ph.D '62  
 Veronica Harrington Russell '49  
 Jane Getchell Saunders '53  
 Sr. Ruth Anne Saunders, CSJ  
 Judy Whalen Sbragia '59  
 Jane Scallon  
 Frances Wagner Schmelter '59  
 Maryjane Cunningham Schram '73  
 Sr. Marie Francis Schroepfer, CSJ '61  
 Sr. Teresa Scottino, CSJ '63  
 Frank Seamas  
 Philomena Castelucci Semenza '71  
 Jocelyn Simpson Turk  
 Anita Varelas Smith '59  
 Janet Hebert Smith '59  
 Patricia McKernan Smith '69  
 Deanna Kaniewski St. Onge '63  
 Sr. Barbara Stowasser, CSJ '56  
 Warner Talso  
 Mary Lou Robeson Taylor '48  
 Dorothy McGowan Thomas '58  
 Jo Ann Crimins Thoresen '61  
 Marguerite Tobias  
 Patricia Brack Valentine '57  
 Anne Verga '75  
 Heather Vigil  
 Halisi Vinson '82  
 Elizabeth Hosta Ward '68  
 Louise Bernuy Weldon '56  
 Mary Wiechelman '77  
 Sharon Smith Williamson '62  
 Susan Melton Wilson '72

## Tie Circle (up to \$49)

Alice Berkeley Ackley '67  
 Antoinette King Adeniji '80  
 Gretchen Anderson '85  
 Jonice Tenette Anderson '70  
 Anonymous  
 Mary Ara '63  
 Mary Christensen Bachman '55  
 Alexis De Clouette Baham '62  
 Christine Schreiner Balogh '70  
 Vicki Bartmess '67  
 Mary Rose Batungbacal  
 Elizabeth Beaver '57  
 Catherine Delmas Belt '61  
 Mary Carrillo Black '48  
 Cheryl Bockhold '56  
 Mary Jane Brewer '64  
 Barbara Brosh '60  
 Joan Brosovic '59  
 Alana Bubis  
 Diane Bubis  
 Virginia Riccardi Buchler '56  
 Denise Holman Carter '68

Casa Barranca Organic Winery  
 Adrienne Chivers '03  
 Peggi Gauer Christie '71  
 Janice Yinger Constancio '69  
 Mary Lynne Cooke '60  
 Brigidann Cooper '99  
 Christopher Crockett  
 Phaebra Croft '82  
 Paula Jones Daniely '84  
 Madeline Delay-Carson '78  
 Maria Derosa  
 Sr. Maureen Doherty, CSJ  
 Robert Douglas  
 Sr. Kathleen Ann Du Ross, CSJ '59  
 Xenia Hernandez Esparza '99  
 Bill and Diane Powell Ferguson '74  
 Lori Van Dyke Foster '78  
 Jessica Franks  
 Fresh Brothers  
 Linda Spano Frisella '59  
 Alda Cory Gamm '48  
 Janai German '15  
 Alice Thomson Gibilterra '60  
 Judith Munson Giffin '56  
 Celina Gomes  
 Dr. Barbara Gonzalez, PhD  
 Claire Gorder  
 Nina Graham '07  
 Candyce Gray '70  
 Susan Heing '70  
 Ruby Hernandez  
 Patricia Hookstratten '54  
 Hotel Erwin  
 Mary Wedlock Houck '71  
 Celia Moreno Hovey '52  
 Kathleen Panek Hutzler '61  
 Celo Parks Ingram '60  
 Antoinette Del Valle Irwin '59  
 Sharon Love Johnson '71  
 Maria Jones '76  
 Sue Gustafson Kreger '53  
 Los Angeles Clippers Community Relations  
 Department  
 Los Angeles Galaxy Foundation  
 Andre Lamon  
 Debra Langford '80  
 Louise Fuess Larkin '59  
 Shawtina Ferguson Lewis '01  
 Los Angeles Conservancy  
 Adrienne Williams Luckey '77  
 Karen Luttecke '75  
 Penelope Granville Madrid '62  
 Katherine Nelson Mahoney '56  
 Malibu Wine Safaris  
 Charmaine Toth Mandula '53  
 Judith Valenzuela Manlapeg '65  
 Sr. Kathleen Martin, CSJ  
 Lola McAlpin-Grant '59  
 Sr. Dennis Mary McFadden, CSJ

Carol McGarry '65  
 Robert McLean  
 Amber Montgomery  
 Sheila Moore  
 Christina Muraczewski  
 Jacqueline Lipiec O'Hara '67  
 Carol Bourhenne Olsen '55  
 Cheryl Oatman Oram '60  
 Natalie Orange '75  
 Donna Schmitt Osterhues '47  
 Catherine Panarelli  
 Gisele Perez '69  
 Gloria Martinez Petty '59  
 Pamela Nader Podzimek '71  
 Sharon Page Porter '64  
 Helen Morearty Primising '53  
 Karen Wunderlich Prowd '65  
 PRP Wine International  
 Frances Rush Alman Rainey '66  
 Residence Inn LAX  
 Ann Sanchez Reyes '69  
 Virginia Hartman Richardson '48  
 Elsa Dominguez Rivas '71  
 Roclord Studio  
 Ivonne Rodriguez  
 Andrea Phillips Roundtree '73  
 Dr. Sandra Roussell  
 Lillian Adams Rouzan '66  
 Robyn Rouzan '92  
 Nancy Salas Silva '92  
 San Antonio Winery  
 Martha Sanchez '07  
 Denise Scanlon  
 Shirley Marrin Schaaf '57  
 Rosemary Masdeo Schneider '49  
 Judith Cleary Schwerdt '55  
 Linda Gerlick Serna '65  
 Sr. Mary Sevilla, CSJ '53  
 Sr. Mary Catherine Siminski '59  
 Therese Voss Sliter '49  
 Vanessa Apollo Smith '04  
 Pamela Davidson Soper '68  
 SoulCycle Culver City  
 Starline Tours of Hollywood  
 Katherine Steinbronner-Maschler '73  
 Su Nido Inn  
 Tara Hayner Taylor '88  
 Angela Tenette '75  
 Heaven Roberts Tennyson '99  
 The Coffee Company  
 The Millennium Biltmore Hotel  
 Tracie Thomas '79  
 Michelle Toro-Dietz '95  
 Total Wine & More  
 Rose Borrego Tumasian '65  
 Debbie Turano  
 Natalie Burns Taylor  
 Universal Studios Hollywood  
 Dr. Lynne Valek, PhD '68



Marilynn Ennis Van Wagner '56  
Sr. Judy Vaughan, CSJ '63  
Sandra Termath Vences '70  
VJB and Wellington Cellars  
Camille Wagner '00  
Alice Seffel Warren '52  
Camille Hall Weiss '59  
Arlene Capalto Wetzel '54  
Marilyn Bockhold Whaley '61  
Marian Joi White '83  
Linda Williams  
Jeanne Hartman Yinger '42  
Jianulla Chapralis Zimmerman '55  
Joy Alderese Zimmerman '64  
Loretta Murray Zimmerman '70

If your name was inadvertently left off this list, accept our apologies. Please don't hesitate to let us know by contacting the Development Department.

# 2019 St. Mary's Academy

## #GIVINGTUESDAY™

Funds Raised: \$42,211

Matching Gift: \$35,000

Grand Total

\$77, 211

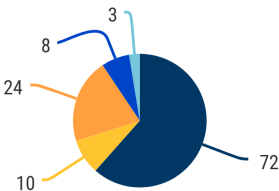


119  
Gifts Made



72  
Alumnae Gifts

### Donor By Affiliation



● Alumnae ● Board Member ● Faculty/Staff ● Friend ● Current Parent

\* Individuals have multiple affiliations to St. Mary's Academy (i.e. Alumna/Board, Alumna/Faculty) and are counted for each group affiliation.

THANK YOU TO ALL OUR DONORS

We Appreciate Your Support

# TO HONOR AND REMEMBER

**Classmates, Friends, and Family honor and remember those special individuals who touched their lives and are fondly recalled, with a lovely gift to St. Mary's Academy**

**In Memory of Chanda Beasley '87**, Parents, Michael & Percenia Beasley

**In Memory of Peggy Brice '65**, Classmate, Sharon Reid

**In Memory of Kathleen McCrimmon Brown '60**, Classmates, Marilyn Grimm, Jane Honda, Josephine Ann Mahoney

**In Memory of Tillie Bushman**, Daughter, Karen Bushman '73

**In Memory of George Dosa**, Colleague, Marianne Saraceno, '71

**In Memory of Irma Darrow Eitner '53**, Husband, Adolf K. Eitner

**In Memory of Cindy Moore Haxton '65**, Sisters, Sue Haffley '61, and Colleen Rodriguez, Classmates Kathleen Kirk, Rosemary Kriste, Norene Zapanta, and Friend, Carolyn Nelson

**In Memory of Arthur B. Hogan**, Son and daughter-in-law, Christopher & Antonia Hogan

**In Memory of Marian Milligan Holland '38**, Daughter, Mary E. Binning

**In Memory of Jackie Hanley Johnson '38**, Daughter, Catherine Schwartz

**In Memory of Patricia Kennedy '66 and Kathleen Kennedy '67**, Sister, Rosemary Kennedy, '74

**In Memory of Carmen Ainslie McClelland '35**, Friend, Maria Derosa

**In Memory of Joan Miyashiro '76**, Sister, Claire Ferrante '74

**In Memory of Sr. Adrienne Clare Pereira CSJ, Former Principal SMA**, Friend and SMA Board Chairperson, Elizabeth Stoddard, PhD

**In Honor of Jackie Purdy, SMA Faculty 1979-1985**, Student, Carmen A. McFolling, '82

**In Honor of Michele Rice, SMA Onward Scholar Program Director**, Susan Miller, SMA Board Member

**In Memory of Jane Talso '52**, Husband, Warner Talso

**In Memory of Celia Margaret Gonzales Torres '54**, Son, Michael Torres



# ABOUT THE ECHO

**ON THE COVER:** The Joan Barber Trust (Green Tie, 1953) has provided funds to make enhancements and improve the appearance and function of the school's campus. This past school year, the entrance to the school was refreshed with new, drought tolerant plants, colorful roses and a special designated place for the statue of our Blessed Mother Mary. A grotto type setting was created with several Pittosporum Tenuifolium "silver sheen" trees planted on either side and behind the statue of Mary and a bed of pink, carpet roses at her feet. The statue of the Blessed Mother, once housed on the property of Daniel Freeman Hospital, was given to the school after the hospital closed. We are blessed to have her grace our school's entrance and welcome our school community, as a sign of hope, love, and peace.

As our county health environment improves and the school can safely allow for campus visitors, additional improvements to the campus will commence. Joan Barber was most thoughtful in her estate planning, naming St. Mary's Academy as the primary beneficiary in her Trust. Our current and future Belles, and all who visit the campus, benefit from her kindness.



If you have or are considering the school in your Trust or Will, please let us know by contacting the Development Department at 310-674-8470. Thank you!



**Published bi-annually, The ECHO is circulated to alumnae, donors, and friends of St. Mary's Academy free of charge and created by The Development and Alumnae Relations Department. If you would like to help defray the production costs, your donation would be greatly appreciated.**

## **Editors**

Jeanne Fisher  
Catherine Knight  
Marianne Padden '74  
Karen Vetter

## **Layout/Production**

Catherine Knight

## **Special Thanks**

SMA Faculty & Staff who contributed to this issue by providing information and photographs

Automation Printing

All SMA Alumnae, Donors, and Friends

Matt Vigil

St. Mary's Academy  
Development Office  
701 Grace Avenue  
Inglewood, CA 90301

NONPROFIT  
US POSTAGE  
PAID  
LOS ANGELES, CA  
PERMIT NO. 816



**Mahalo nui to all who participated in this year's Hawaiian Vacation raffle!  
One of our best Hawaiian raffle fundraisers yet, with all monies raised going  
towards financial assistance for our students.**

**This year's winner is Red Tie class of 1967, Patsy Call Heinlein!  
Congratulations Patsy!**

*Live ~ Love ~ Learn ~ Serve*

**STAY  
CONNECTED!**



[smabelles.org/blog/](https://smabelles.org/blog/)