

# SGSC PARENT NEWSLETTER

JANUARY 31ST - FEBRUARY 4TH, 2022

## FROM THE PRINCIPAL

Hello Everyone,

I hope you all are having a sensational Sunday! We are so excited to see our Aggie Achievers tomorrow!

Thank you all for getting your children back into the routine of coming to school each day! We are beginning to see our attendance percentages increase and that means such much for overall student/achiever achievement! Once again, I want to reiterate the importance of attendance. If your child is not in school each day, they are falling behind. If your child is falling behind, then our scores will also fall behind. Everything is intertwined, so please **IF AT ALL POSSIBLE - send your child to school each and every day!**

Reminder - Please review the matrix for behaviors for our Aggie Achievers at home! We are really pushing these positive behaviors in school, and I think it would be awesome to have the parents speak the same language at home. I have included the matrix for elementary and the matrix for middle/high below. Thanks for all of the support!

REMINDER - We also need your help with making sure that the achievers are becoming responsible for logging into Infinite Campus and checking for their missing assignments. We began a school wide initiative on January 24th where achievers will begin checking their Infinite Campus during Monday morning homeroom in grades 6th - 10th grades to see which assignments are missing and check with their teachers to get these caught up. We need you to support our efforts if you can! Thank you!

Below, I have included an image of our newly adopted Vision and Mission Statements for SGSC. We are so excited to be able to work with you all to accomplish both the vision and mission for our school!

We are so thankful for our staff at SGSC! If you would like to nominate a Staff member for a SHOUT OUT, please click the link below to complete the form! Thanks so much for

recognizing our staff and all of their efforts!

Staff Shout Out Form: <https://forms.gle/ngToLSDxjNZ8HjwH6>

As always, if you have any questions or concerns, please feel free to send me an email at [galmon@sowegastemcharter.org](mailto:galmon@sowegastemcharter.org).

Sincerely,  
Ginger Almon

SGSC Elementary School PBIS Matrix					
	Bathrooms	Hallways	Classroom	Bus	Playground
<b>S</b> <b>Be Safe</b> Students must maintain the environment and physical safety of our community.	Keep 100% clean and neat Please call phone in the hallway Report unsafe conditions to teacher or staff member Keep your hands clean	Keep 100% clean and neat Please call phone in the hallway Report unsafe conditions to teacher or staff member Keep your hands clean	Keep 100% clean and neat Please call phone in the hallway Report unsafe conditions to teacher or staff member Keep your hands clean	Keep 100% clean and neat Please call phone in the hallway Report unsafe conditions to teacher or staff member Keep your hands clean	Keep 100% clean and neat Please call phone in the hallway Report unsafe conditions to teacher or staff member Keep your hands clean
<b>P</b> <b>Persevere</b> Continue to persevere in the face of difficulty.					
<b>R</b> <b>Be Respectful</b> Be polite and use the appropriate language and non-verbal communication.					
<b>R</b> <b>Be Responsible</b> Report unsafe conditions to the right staff member.					

SGSC Middle/High School PBIS Matrix				
	Bathrooms	Hallways	Classroom	Bus
<b>S</b> <b>Be Safe</b> Students must maintain the environment and physical safety of our community.	Keep 100% clean and neat Please call phone in the hallway Report unsafe conditions to teacher or staff member Keep your hands clean	Keep 100% clean and neat Please call phone in the hallway Report unsafe conditions to teacher or staff member Keep your hands clean	Keep 100% clean and neat Please call phone in the hallway Report unsafe conditions to teacher or staff member Keep your hands clean	Keep 100% clean and neat Please call phone in the hallway Report unsafe conditions to teacher or staff member Keep your hands clean
<b>P</b> <b>Persevere</b> Continue to persevere in the face of difficulty.				
<b>R</b> <b>Be Respectful</b> Be polite and use the appropriate language and non-verbal communication.				
<b>R</b> <b>Be Responsible</b> Report unsafe conditions to the right staff member.				

Aggies are responsible, respectful, safe and persevere.

**SGSC Vision**

*A focused, competitive, hands-on, and joyful learning environment for all students that will prepare them to become successful, gracious, scholarly citizens.*

**SGSC Mission**

*Provide distinguished and integrated instruction in an environment that cultivates respect, is inclusive of all, and lays the foundation for excellence and life-long learning.*

## COVID UPDATE FROM SGSC FOR 1/31/2022

**COVID  
INFORMATION  
FOR  
SGSC  
1/31/22**

Other information:  
Please do not send your child to school if they are experiencing symptoms related to COVID, if someone in the household is positive, or if there is a pending COVID test for the student or household member.

**Positive Cases:  
Staff - 0  
Students - 1**



**MORE COVID INFORMATION**

If you have any further questions, please reach out to our school nurse, Kristen Roland - [kroland@sowegastemcharter.org](mailto:kroland@sowegastemcharter.org) or 229.345.3033 or myself [galmon@sowegastemcharter.org](mailto:galmon@sowegastemcharter.org).





# SOUTHWEST GEORGIA

## S.T.E.M. CHARTER SCHOOL

### What to do if you test positive for COVID-19 (Regardless of vaccination status)

#### WITH SYMPTOMS

##### ISOLATE

At least 5 days from start of symptoms  
*and*

Stay away from others in the household as much as possible during isolation  
*and*

Isolate until at least **24 hours with NO FEVER** without fever reducing medications  
*and*

**You have no symptoms** or your symptoms are resolving  
*and*

After ending isolation, you should continue to **WEAR A MASK** around others for 5 days

#### NO SYMPTOMS

##### ISOLATE

At least 5 days from date of positive test  
*and*

Stay away from others in the household as much as possible during isolation  
*and*

Isolate until at least **24 hours with NO FEVER** without fever reducing medications  
*and*

**You have no COVID related symptoms**  
*and*

After ending isolation, you should continue to **WEAR A MASK** around others for 5 days

### What to do if you have been EXPOSED to COVID-19:

#### VACCINATED

Boosted, or have become fully vaccinated within the last 6 months (Moderna or Pfizer vaccine) or within the last 2 months (J&J vaccine):

##### NO QUARANTINE REQUIRED

You should **wear a mask** around others for **10 days**  
*and*

If possible, get **tested on day 5**  
*and*

**If you develop symptoms, get tested** and isolate at home until test results are received, then proceed in accordance to test results.

#### UNVACCINATED

or became fully vaccinated more than 6 months ago (Moderna or Pfizer vaccine) or more than 2 months ago (J&J vaccine) and have not received a booster:

##### QUARANTINE AT HOME FOR 5 DAYS

After that, continue to wear a mask around others for 5 additional days  
*and*

If possible, get tested on day 5  
*and*

**If you develop symptoms, get tested** and isolate at home until test results are received, then proceed in accordance to test results.

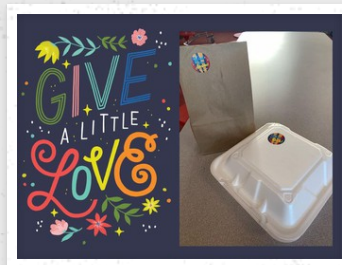
## SCHOOL CALENDAR

SOUTHWEST GEORGIA STEM CHARTER | 2021-2022 CALENDAR

<b>JULY '21</b> <table border="1"> <tr><td>S</td><td>M</td><td>T</td><td>W</td><td>Th</td><td>F</td><td>S</td></tr> <tr><td></td><td></td><td></td><td></td><td>1</td><td>2</td><td>3</td></tr> <tr><td>4</td><td>5</td><td>6</td><td>7</td><td>8</td><td>9</td><td>10</td></tr> <tr><td>11</td><td>12</td><td>13</td><td>14</td><td>15</td><td>16</td><td>17</td></tr> <tr><td>18</td><td>19</td><td>20</td><td>21</td><td>22</td><td>23</td><td>24</td></tr> <tr><td>25</td><td>26</td><td>27</td><td>28</td><td>29</td><td>30</td><td>31</td></tr> </table>	S	M	T	W	Th	F	S					1	2	3	4	5	6	7	8	9	10	11	12	13	14	15	16	17	18	19	20	21	22	23	24	25	26	27	28	29	30	31	<b>28-30</b> Pre-Planning	<b>3-4</b> Teacher In-Service <b>7</b> End of Quarter 2 <b>10</b> Report Cards (Q2) <b>17</b> M.L. King Day	<b>JANUARY '22</b> <table border="1"> <tr><td>S</td><td>M</td><td>T</td><td>W</td><td>Th</td><td>F</td><td>S</td></tr> <tr><td></td><td></td><td></td><td></td><td></td><td></td><td>1</td></tr> <tr><td>2</td><td>3</td><td>4</td><td>5</td><td>6</td><td>7</td><td>8</td></tr> <tr><td>9</td><td>10</td><td>11</td><td>12</td><td>13</td><td>14</td><td>15</td></tr> <tr><td>16</td><td>17</td><td>18</td><td>19</td><td>20</td><td>21</td><td>22</td></tr> <tr><td>23</td><td>24</td><td>25</td><td>26</td><td>27</td><td>28</td><td>29</td></tr> <tr><td>30</td><td>31</td><td></td><td></td><td></td><td></td><td></td></tr> </table>	S	M	T	W	Th	F	S							1	2	3	4	5	6	7	8	9	10	11	12	13	14	15	16	17	18	19	20	21	22	23	24	25	26	27	28	29	30	31												
S	M	T	W	Th	F	S																																																																																															
				1	2	3																																																																																															
4	5	6	7	8	9	10																																																																																															
11	12	13	14	15	16	17																																																																																															
18	19	20	21	22	23	24																																																																																															
25	26	27	28	29	30	31																																																																																															
S	M	T	W	Th	F	S																																																																																															
						1																																																																																															
2	3	4	5	6	7	8																																																																																															
9	10	11	12	13	14	15																																																																																															
16	17	18	19	20	21	22																																																																																															
23	24	25	26	27	28	29																																																																																															
30	31																																																																																																				
<b>AUGUST '21</b> <table border="1"> <tr><td>S</td><td>M</td><td>T</td><td>W</td><td>Th</td><td>F</td><td>S</td></tr> <tr><td>1</td><td>2</td><td>3</td><td>4</td><td>5</td><td>6</td><td>7</td></tr> <tr><td>8</td><td>9</td><td>10</td><td>11</td><td>12</td><td>13</td><td>14</td></tr> <tr><td>15</td><td>16</td><td>17</td><td>18</td><td>19</td><td>20</td><td>21</td></tr> <tr><td>22</td><td>23</td><td>24</td><td>25</td><td>26</td><td>27</td><td>28</td></tr> <tr><td>29</td><td>30</td><td>31</td><td></td><td></td><td></td><td></td></tr> </table>	S	M	T	W	Th	F	S	1	2	3	4	5	6	7	8	9	10	11	12	13	14	15	16	17	18	19	20	21	22	23	24	25	26	27	28	29	30	31					<b>2-3</b> Pre-Planning <b>4</b> 1 <sup>st</sup> Day of School	<b>11</b> Progress Reports (Q3) <b>18</b> Winter Break <b>21</b> Presidents Day	<b>FEBRUARY '22</b> <table border="1"> <tr><td>S</td><td>M</td><td>T</td><td>W</td><td>Th</td><td>F</td><td>S</td></tr> <tr><td></td><td></td><td></td><td></td><td></td><td></td><td>1</td></tr> <tr><td>2</td><td>3</td><td>4</td><td>5</td><td>6</td><td>7</td><td>8</td></tr> <tr><td>9</td><td>10</td><td>11</td><td>12</td><td>13</td><td>14</td><td>15</td></tr> <tr><td>16</td><td>17</td><td>18</td><td>19</td><td>20</td><td>21</td><td>22</td></tr> <tr><td>23</td><td>24</td><td>25</td><td>26</td><td>27</td><td>28</td><td>29</td></tr> <tr><td>30</td><td></td><td></td><td></td><td></td><td></td><td></td></tr> </table>	S	M	T	W	Th	F	S							1	2	3	4	5	6	7	8	9	10	11	12	13	14	15	16	17	18	19	20	21	22	23	24	25	26	27	28	29	30													
S	M	T	W	Th	F	S																																																																																															
1	2	3	4	5	6	7																																																																																															
8	9	10	11	12	13	14																																																																																															
15	16	17	18	19	20	21																																																																																															
22	23	24	25	26	27	28																																																																																															
29	30	31																																																																																																			
S	M	T	W	Th	F	S																																																																																															
						1																																																																																															
2	3	4	5	6	7	8																																																																																															
9	10	11	12	13	14	15																																																																																															
16	17	18	19	20	21	22																																																																																															
23	24	25	26	27	28	29																																																																																															
30																																																																																																					
<b>SEPTEMBER '21</b> <table border="1"> <tr><td>S</td><td>M</td><td>T</td><td>W</td><td>Th</td><td>F</td><td>S</td></tr> <tr><td></td><td></td><td></td><td>1</td><td>2</td><td>3</td><td>4</td></tr> <tr><td>5</td><td>6</td><td>7</td><td>8</td><td>9</td><td>10</td><td>11</td></tr> <tr><td>12</td><td>13</td><td>14</td><td>15</td><td>16</td><td>17</td><td>18</td></tr> <tr><td>19</td><td>20</td><td>21</td><td>22</td><td>23</td><td>24</td><td>25</td></tr> <tr><td>26</td><td>27</td><td>28</td><td>29</td><td>30</td><td></td><td></td></tr> </table>	S	M	T	W	Th	F	S				1	2	3	4	5	6	7	8	9	10	11	12	13	14	15	16	17	18	19	20	21	22	23	24	25	26	27	28	29	30			<b>3</b> Teacher In-Service <b>7</b> Progress Reports (Q1) <b>6</b> Labor Day Holiday	<b>14</b> Teacher In-Service <b>18</b> End of Quarter 3 <b>21</b> Report Cards (Q3)	<b>MARCH '22</b> <table border="1"> <tr><td>S</td><td>M</td><td>T</td><td>W</td><td>Th</td><td>F</td><td>S</td></tr> <tr><td></td><td></td><td></td><td>1</td><td>2</td><td>3</td><td>4</td></tr> <tr><td>5</td><td>6</td><td>7</td><td>8</td><td>9</td><td>10</td><td>11</td></tr> <tr><td>12</td><td>13</td><td>14</td><td>15</td><td>16</td><td>17</td><td>18</td></tr> <tr><td>19</td><td>20</td><td>21</td><td>22</td><td>23</td><td>24</td><td>25</td></tr> <tr><td>26</td><td>27</td><td>28</td><td>29</td><td>30</td><td>31</td><td></td></tr> </table>	S	M	T	W	Th	F	S				1	2	3	4	5	6	7	8	9	10	11	12	13	14	15	16	17	18	19	20	21	22	23	24	25	26	27	28	29	30	31															
S	M	T	W	Th	F	S																																																																																															
			1	2	3	4																																																																																															
5	6	7	8	9	10	11																																																																																															
12	13	14	15	16	17	18																																																																																															
19	20	21	22	23	24	25																																																																																															
26	27	28	29	30																																																																																																	
S	M	T	W	Th	F	S																																																																																															
			1	2	3	4																																																																																															
5	6	7	8	9	10	11																																																																																															
12	13	14	15	16	17	18																																																																																															
19	20	21	22	23	24	25																																																																																															
26	27	28	29	30	31																																																																																																
<b>OCTOBER '21</b> <table border="1"> <tr><td>S</td><td>M</td><td>T</td><td>W</td><td>Th</td><td>F</td><td>S</td></tr> <tr><td></td><td></td><td></td><td></td><td></td><td>1</td><td>2</td></tr> <tr><td>3</td><td>4</td><td>5</td><td>6</td><td>7</td><td>8</td><td>9</td></tr> <tr><td>10</td><td>11</td><td>12</td><td>13</td><td>14</td><td>15</td><td>16</td></tr> <tr><td>17</td><td>18</td><td>19</td><td>20</td><td>21</td><td>22</td><td>23</td></tr> <tr><td>24</td><td>25</td><td>26</td><td>27</td><td>28</td><td>29</td><td>30</td></tr> <tr><td>31</td><td></td><td></td><td></td><td></td><td></td><td></td></tr> </table>	S	M	T	W	Th	F	S						1	2	3	4	5	6	7	8	9	10	11	12	13	14	15	16	17	18	19	20	21	22	23	24	25	26	27	28	29	30	31							<b>7</b> End of Quarter 1 <b>8</b> Fall Break <b>11</b> Columbus Day <b>12</b> Report Card (Q1)	<b>1-8</b> Spring Break <b>22</b> Progress Reports (Q4) <b>25-29</b> Milestones EOG	<b>APRIL '22</b> <table border="1"> <tr><td>S</td><td>M</td><td>T</td><td>W</td><td>Th</td><td>F</td><td>S</td></tr> <tr><td></td><td></td><td></td><td></td><td></td><td></td><td>1</td></tr> <tr><td>2</td><td>3</td><td>4</td><td>5</td><td>6</td><td>7</td><td>8</td></tr> <tr><td>9</td><td>10</td><td>11</td><td>12</td><td>13</td><td>14</td><td>15</td></tr> <tr><td>16</td><td>17</td><td>18</td><td>19</td><td>20</td><td>21</td><td>22</td></tr> <tr><td>23</td><td>24</td><td>25</td><td>26</td><td>27</td><td>28</td><td>29</td></tr> <tr><td>30</td><td></td><td></td><td></td><td></td><td></td><td></td></tr> </table>	S	M	T	W	Th	F	S							1	2	3	4	5	6	7	8	9	10	11	12	13	14	15	16	17	18	19	20	21	22	23	24	25	26	27	28	29	30						
S	M	T	W	Th	F	S																																																																																															
					1	2																																																																																															
3	4	5	6	7	8	9																																																																																															
10	11	12	13	14	15	16																																																																																															
17	18	19	20	21	22	23																																																																																															
24	25	26	27	28	29	30																																																																																															
31																																																																																																					
S	M	T	W	Th	F	S																																																																																															
						1																																																																																															
2	3	4	5	6	7	8																																																																																															
9	10	11	12	13	14	15																																																																																															
16	17	18	19	20	21	22																																																																																															
23	24	25	26	27	28	29																																																																																															
30																																																																																																					
<b>NOVEMBER '21</b> <table border="1"> <tr><td>S</td><td>M</td><td>T</td><td>W</td><td>Th</td><td>F</td><td>S</td></tr> <tr><td></td><td></td><td>1</td><td>2</td><td>3</td><td>4</td><td>5</td></tr> <tr><td>6</td><td>7</td><td>8</td><td>9</td><td>10</td><td>11</td><td>12</td></tr> <tr><td>13</td><td>14</td><td>15</td><td>16</td><td>17</td><td>18</td><td>19</td></tr> <tr><td>20</td><td>21</td><td>22</td><td>23</td><td>24</td><td>25</td><td>26</td></tr> <tr><td>27</td><td>28</td><td>29</td><td>30</td><td></td><td></td><td></td></tr> </table>	S	M	T	W	Th	F	S			1	2	3	4	5	6	7	8	9	10	11	12	13	14	15	16	17	18	19	20	21	22	23	24	25	26	27	28	29	30				<b>11</b> Veterans Day <b>12</b> Teacher In-Service <b>15</b> Progress Reports (Q2) <b>22-24</b> Thanksgiving Break	<b>2-4</b> Milestones EOG <b>9-13</b> Milestones EOC <b>20</b> Last Day of School (Half Day) <b>20</b> Report Cards (Q4) <b>23-24</b> Post-Planning	<b>MAY '22</b> <table border="1"> <tr><td>S</td><td>M</td><td>T</td><td>W</td><td>Th</td><td>F</td><td>S</td></tr> <tr><td></td><td></td><td></td><td></td><td></td><td></td><td>1</td></tr> <tr><td>2</td><td>3</td><td>4</td><td>5</td><td>6</td><td>7</td><td>8</td></tr> <tr><td>9</td><td>10</td><td>11</td><td>12</td><td>13</td><td>14</td><td>15</td></tr> <tr><td>16</td><td>17</td><td>18</td><td>19</td><td>20</td><td>21</td><td>22</td></tr> <tr><td>23</td><td>24</td><td>25</td><td>26</td><td>27</td><td>28</td><td>29</td></tr> <tr><td>30</td><td>31</td><td></td><td></td><td></td><td></td><td></td></tr> </table>	S	M	T	W	Th	F	S							1	2	3	4	5	6	7	8	9	10	11	12	13	14	15	16	17	18	19	20	21	22	23	24	25	26	27	28	29	30	31												
S	M	T	W	Th	F	S																																																																																															
		1	2	3	4	5																																																																																															
6	7	8	9	10	11	12																																																																																															
13	14	15	16	17	18	19																																																																																															
20	21	22	23	24	25	26																																																																																															
27	28	29	30																																																																																																		
S	M	T	W	Th	F	S																																																																																															
						1																																																																																															
2	3	4	5	6	7	8																																																																																															
9	10	11	12	13	14	15																																																																																															
16	17	18	19	20	21	22																																																																																															
23	24	25	26	27	28	29																																																																																															
30	31																																																																																																				
<b>DECEMBER '21</b> <table border="1"> <tr><td>S</td><td>M</td><td>T</td><td>W</td><td>Th</td><td>F</td><td>S</td></tr> <tr><td></td><td></td><td></td><td></td><td></td><td>1</td><td>2</td></tr> <tr><td>3</td><td>4</td><td>5</td><td>6</td><td>7</td><td>8</td><td>9</td></tr> <tr><td>10</td><td>11</td><td>12</td><td>13</td><td>14</td><td>15</td><td>16</td></tr> <tr><td>17</td><td>18</td><td>19</td><td>20</td><td>21</td><td>22</td><td>23</td></tr> <tr><td>24</td><td>25</td><td>26</td><td>27</td><td>28</td><td>29</td><td>30</td></tr> <tr><td>31</td><td></td><td></td><td></td><td></td><td></td><td></td></tr> </table>	S	M	T	W	Th	F	S						1	2	3	4	5	6	7	8	9	10	11	12	13	14	15	16	17	18	19	20	21	22	23	24	25	26	27	28	29	30	31							<b>17</b> Half Day <b>20-31</b> Christmas Break	<table border="1"> <tr><td>Red</td><td>Holiday/School Closed</td></tr> <tr><td>Black</td><td>Teacher In-Service (No School for students)</td></tr> <tr><td>Yellow</td><td>Half Day</td></tr> <tr><td>Blue</td><td>Milestones EOG/EOC</td></tr> </table>	Red	Holiday/School Closed	Black	Teacher In-Service (No School for students)	Yellow	Half Day	Blue	Milestones EOG/EOC																																										
S	M	T	W	Th	F	S																																																																																															
					1	2																																																																																															
3	4	5	6	7	8	9																																																																																															
10	11	12	13	14	15	16																																																																																															
17	18	19	20	21	22	23																																																																																															
24	25	26	27	28	29	30																																																																																															
31																																																																																																					
Red	Holiday/School Closed																																																																																																				
Black	Teacher In-Service (No School for students)																																																																																																				
Yellow	Half Day																																																																																																				
Blue	Milestones EOG/EOC																																																																																																				

# SGSC CAFETERIA INFORMATION

Please remember all students will receive a free lunch and breakfast this year!



**BREAKFAST**

**LUNCH**





## **FROM MS. MCBRIDE...**

Cooperating is about working together and helping others. When kids cooperate, they have more positive social interactions and are better able to make and keep friends. Parents can help their children develop the skills needed for a lifetime of friendships and positive social connections by teaching and encouraging cooperation skills early. Here are some tips for growing cooperativeness in young children:

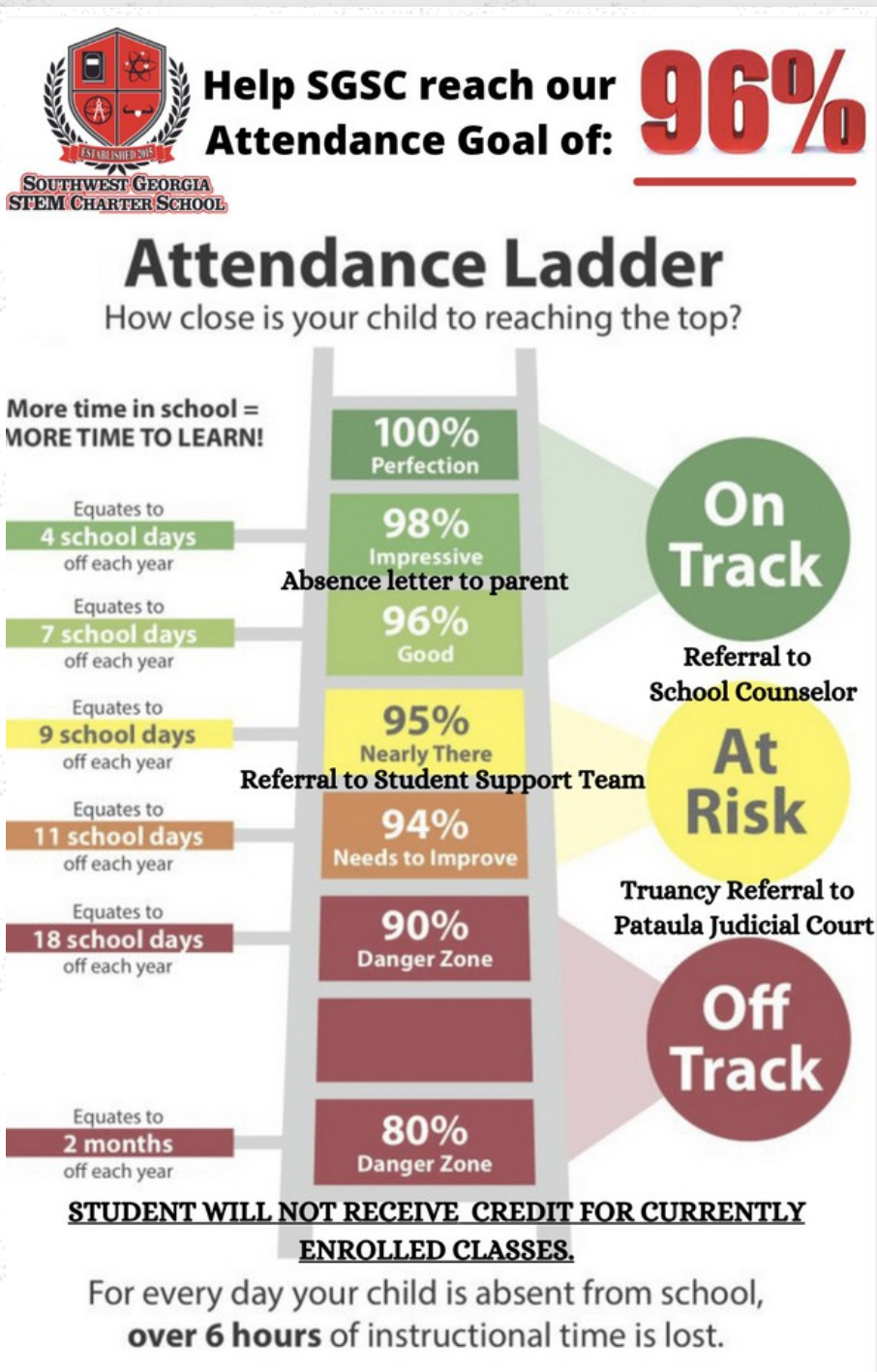
**Help kids understand what cooperation means.** Cooperation is a big word and a complicated skill. One way to help kids cooperate is to break this complex skill down into smaller, easier to understand steps. For example, you could tell your child cooperation means 1) taking turns, 2) working together, and 3) sharing.

**Model cooperation skills at home and with friends.** Modeling not only helps teach kids what cooperation looks like, it also demonstrates your belief in the importance and value of cooperation. When you cooperate, your kids will likely follow your lead.

**Role-play how to cooperate.** Role-playing can be a great way to teach cooperation because it allows parents to support their child's skill development, no matter how advanced or challenged.

**Use specific praise to encourage children's efforts to cooperate.** When parents pay attention to their child's cooperation skills, their child is more likely to use these skills again in the future. Specifically acknowledging good cooperation skills can keep them growing and developing.

**Plan activities that encourage kids to cooperate.** Even though cooperating can be difficult, it can also be fun. One way parents can make cooperation fun is by planning games and activities that encourage kids to work together.





# UPCOMING EVENTS AT SGSC

## MARK YOUR CALENDARS

**February 7th - 11th** - National School Counselors' Appreciation Week

**February 11th** - Progress Reports sent home

**February 11th** - Open Enrollment Ends

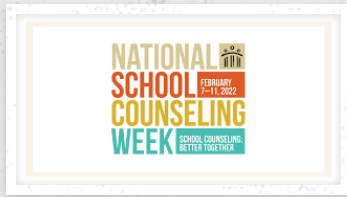
**February 14th** - Pre-K Registration Begins

**February 18th** - Winter Break Day - No School

**February 21st** - President's Day/Winter Break Day - No School

**February 25th** - Pre-K Registration Ends





SGSC

SPORTS

SECTION

## FROM COACH CROWDIS...

Once again, a huge THANK YOU to for all of the support leading up to what is guaranteed to be a great season of baseball for the Aggies! We are seeing so much promise and teamwork from both the middle school team and JV team so far!

Please remember...The baseball team is selling 5 gallon buckets of laundry detergent. This detergent is top notch and you will not find a better deal for the amount of detergent you receive. Each bucket is \$50 and we will have a comparable brand for you to choose from. For the past two years my family of four has purchased these from another school and it lasts us close to a year. That is a deal! To find out more or to purchase please see an Aggie baseball player or you can email me at [bcrowdis@sowegastemcharter.org](mailto:bcrowdis@sowegastemcharter.org).

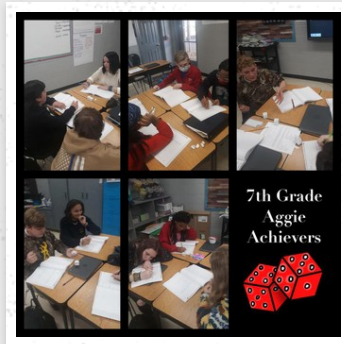
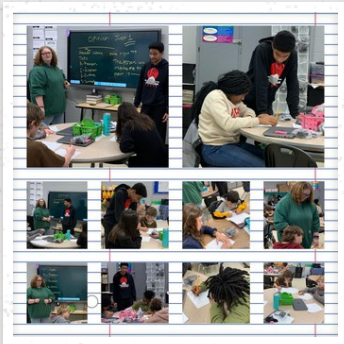
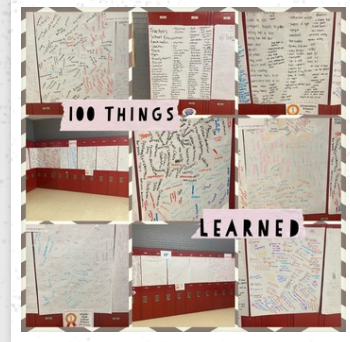





# 100 Days of School



# 100 Days of School





## Positive Office Referral

*Josie DiLeonardo*

Josie's teachers wrote, "Josie has been trying very hard lately to be the best Aggie Achiever she can be! She is one of the first students to arrive and immediately starts on her morning work. She comes to class ready to learn with a smile on her face and has even increased her STAR reading score. I am so proud of her hard work and dedication. Keep up the great work, Josie!"







## HOW TO READ WITH YOUR CHILD AT HOME....

How To Read With Your Child





## FROM OUR INSTRUCTIONAL COACHES...

Parents,

Don't forget....the Georgia Department of Education partnered with [Georgia Public Broadcasting](#) to launch the [Georgia Home Classroom](#). Georgia families and teachers can access K-12 resources aligned to the Georgia Standards of Excellence (GSE) with more than 362,000 views since April 2020.

- [Let's Learn GA! Video Lessons](#) (43 K-5, all content areas)
- [Getting Ready for School Parent Guides](#) (K-5)

The "Let's Learn GA!" link above provides short videos for parents and students. These videos explain the specific grade level skills your child will learn in each of the 4 main content areas as well as in PE and Art. As a parent myself, watching these videos helped me have a better understanding of how to support my child and his teachers. We hope that these videos will help you and your child as well.

**ONE TEAM.  
ONE MISSION.  
NO EXCUSES.**



## **SOUTHWEST GEORGIA STEM CHARTER SCHOOL**

 Facebook

 185 Pecan Street, Shellman, ...

 [galmon@sowegastemcharter...](mailto:galmon@sowegastemcharter...)

 229-345-3033

 [swgeorgiastemcharter.com/](http://swgeorgiastemcharter.com/)