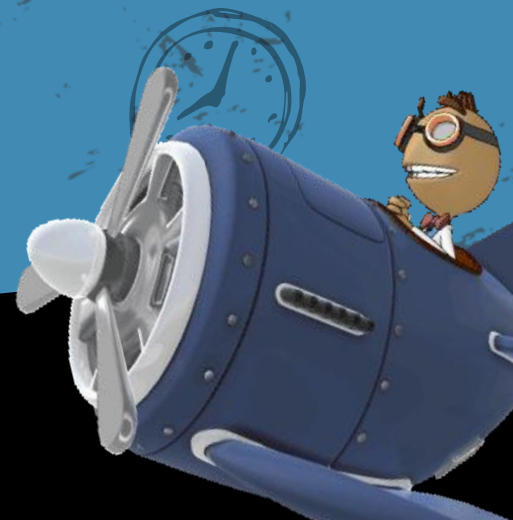




Together We Rise

SIC Presentation
Johnsonville Middle School 2025-2026
December 2, 2025



JOHNSONVILLE MIDDLE SCHOOL

REPORT CARD SCORE

GOOD

51 Points

**How can we improve our
score?**



**SCHOOL
REPORT
CARD**



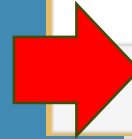
*WHAT WAS OUR
RATING?*



ACADEMICS



Academic
Achievement



Average



Preparing For
Success



Average



Student Progress

Good

School Environment



School Climate

Excellent

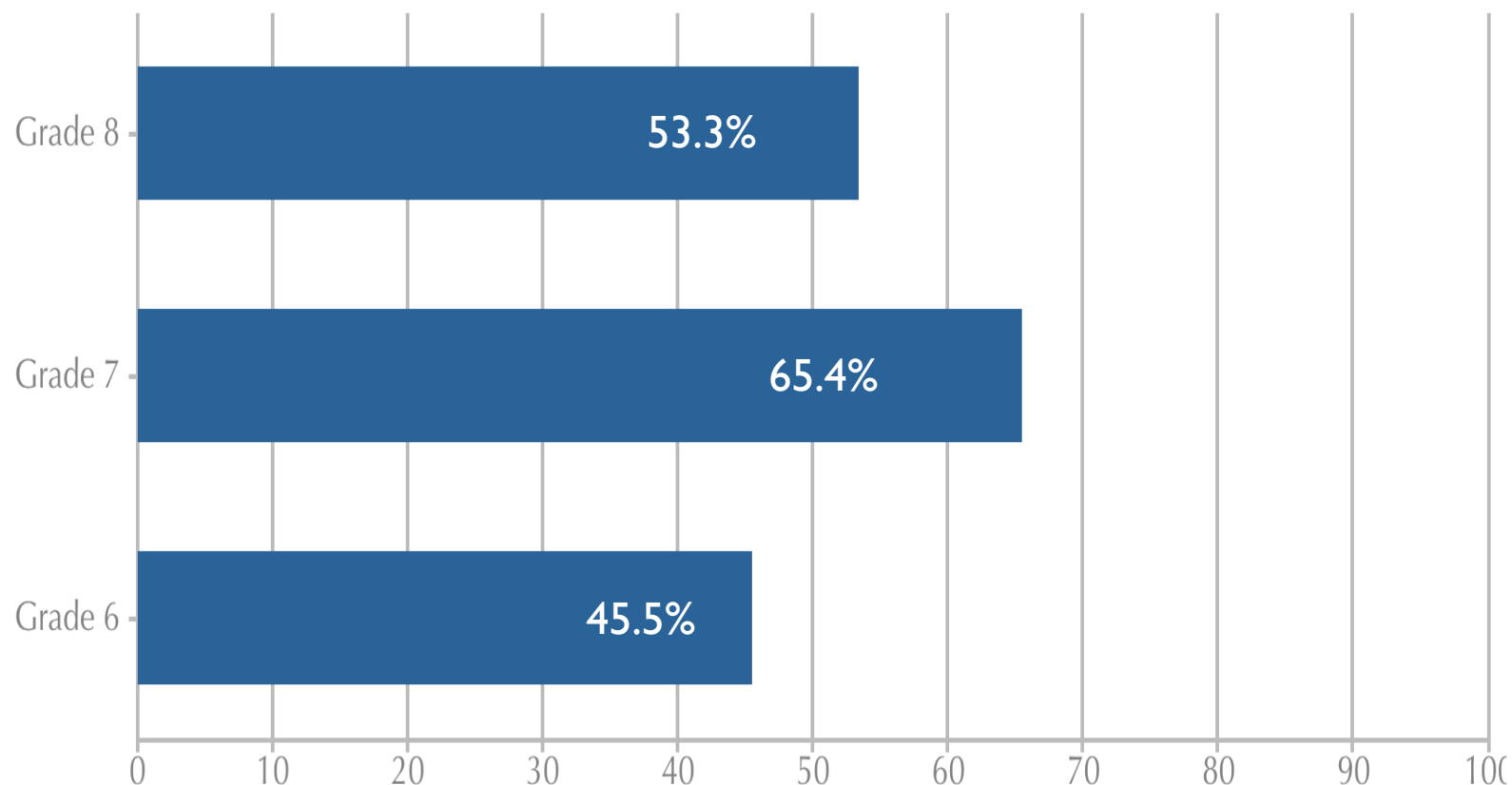
ELA PERCENT MET OR EXCEEDS

Academic Achievement

ELA Reading Writing	Percent Met or Exceeds
JMS	53.7%
State	60.3%

SC READY Performance by Grade Level

English Language Arts (Reading and Writing)

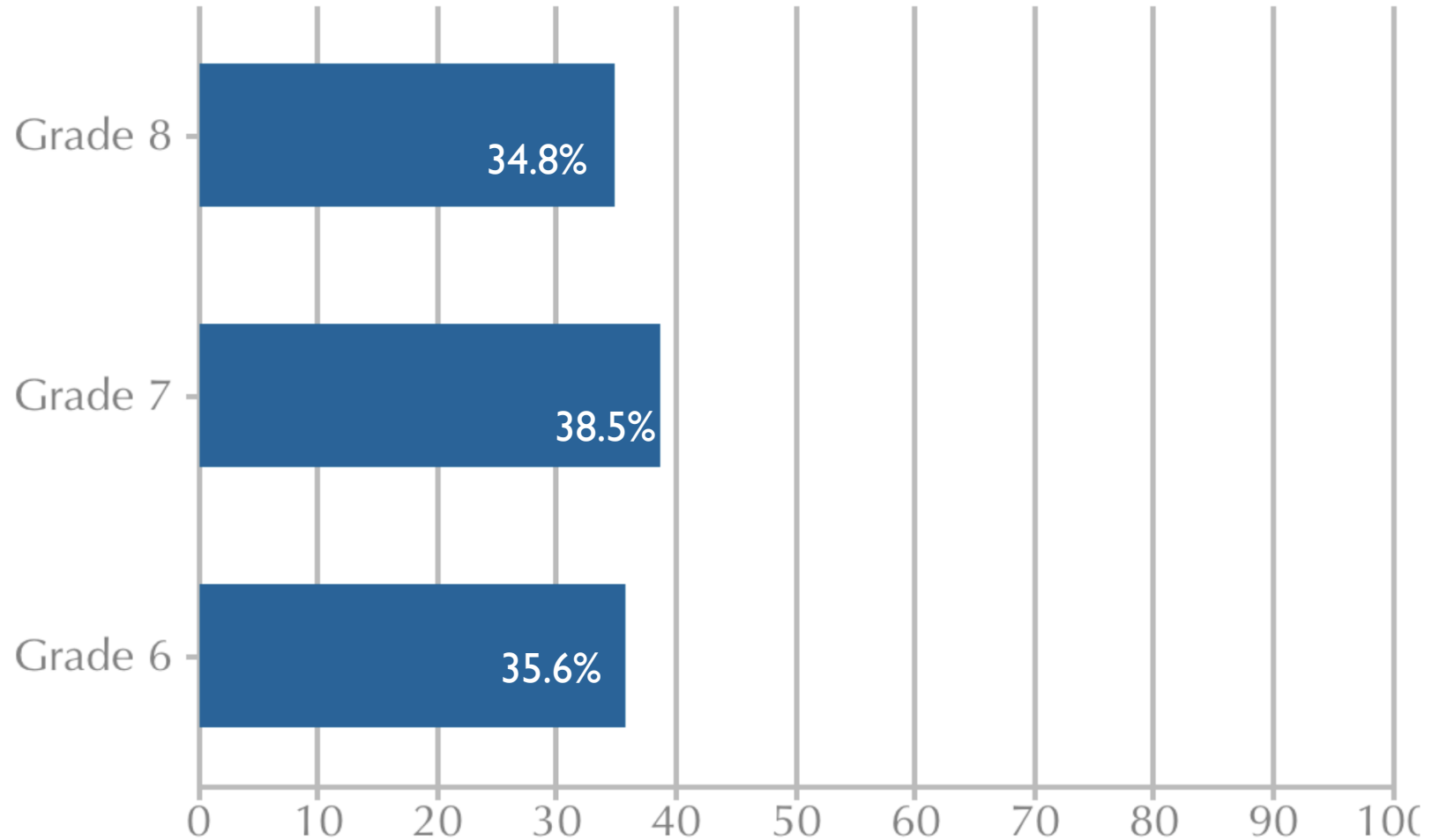


MATH PERCENT MET OR EXCEEDS

Academic Achievement

Math Reading Writing	Percent Met or Exceeds
JMS	36%
State	44.5%

Mathematics



STRATEGIES TO IMPROVE STATE REPORT CARD SCORE FOR

**PREPARING
FOR SUCCESS**

(AVERAGE)

SCIENCE

	2022	2023	2024	2025
JMS	40.7%	43.2%	No Data	47.5%
STATE	46%	45.1%	No Data	49.5%
Rating for JMS	Below Average	Below Average	X	Average

How Are We Going to Help Grow Our 6th Grade Science Students?

- Science Data Breakdown for SC Ready - I discussed the topics assessed with Mrs. Grier: **Energy and Waves, Life Science, History of the Earth, and Earth and Atmosphere**, and examined the performance levels for each of these categories. We were able to determine the areas where the students struggled by reviewing the number of students who scored at levels 1, 2, or 3.
- New Spiral Review/Bell Ringer*
- SC Ready Test Prep Books*
- 5E Model for Science Lessons (Engagement, Exploration, Explanation, Elaboration, and Evaluation)
- Literacy is integrated into her lessons/Research
- Gizmos Science Labs



COMPARISON TO OTHER SCHOOLS



ELA Grade	JMS	Hannah- Pamplico	Henry Sneed Middle	John W. Moore Middle	Southside Middle	Georgetown Middle	John Paul Truluck Middle	PHES/ Carvers Bay Middle	Conway Middle	Forest Brook Middle
	53.7%	50.2%	49.9%	57.3%	49.3%	40.8%	43.1%	39.2%	59.1%	57.1%



COMPARISON TO OTHER SCHOOLS






Math Grade	JMS	Hannah- Pamplico	Henry Sneed Middle	John W. Moore Middle	Southside Middle	Georgetown Middle	John Paul Truluck Middle	PHES/ Carvers Bay Middle	Conway Middle	Forest Brook Middle
	36.0%	30.1%	26.4%	45.8%	36.3%	17.4%	22.2%	13.3%	39.7%	42.6%

Winter i-READY Diagnostics 2025-2026






ELA WINTER I-READY DIAGNOSTIC

25-26

Grade		Tier 1			Tier 2			Tier 3		
		F	W	S	F	W	S	F	W	S
6		22 %	34%		33%	27%		45%	39%	
7		29%	32%		10%	16%		61%	52%	
8		40%	46%		12 %	21%		49%	33%	

MATH WINTER I-READY DIAGNOSTIC

25-26

Grade		Tier 1			Tier 2			Tier 3		
		F	W	S	F	W	S	F	W	S
Grade 6		21%	39%		41%	34%		38%	27%	
Grade 7		15%	29%		34%	35%		51%	35%	
Grade 8		22%	28%		33%	35%		45%	37%	



STRATEGIES TO IMPROVE STATE REPORT CARD SCORE FOR **ACADEMIC ACHIEVEMENT**

AVERAGE



JMS Strategies for Enrichment Classes

1. An Enrichment period was built into the 2025-2026 school schedule. During this time, all instructional tutors and each member of the grade level will remediate skills in reading and math.
2. Enrichment classes are no longer for i-Ready learning pathway completion. The i-Ready lessons are done in the core content area classes with the ELA and math teacher. Enrichment classes are typically structured to address two days of reading and two days of ELA. Friday Enrichment classes offer opportunities to catch up on any work that was not completed during the week.
3. Enrichment classes are no longer for i-Ready learning pathway completion. The i-Ready lessons are done in the core content area classes with the ELA and math teacher.
4. On the Friday prior to a new week, the JMS instructional coach meets with the math and ELA teachers for each grade level to plan the upcoming Enrichment lessons. These lessons are based on data and recommendations from the ELA and math teachers.
5. High Quality Instructional Materials (HMH/I-Ready)/Professional Development are being implemented for ELA and math.
6. We conduct data crunches with each i-Ready diagnostic to identify areas of weakness and bubble students in our PLCs.
7. We have incentives for each diagnostic and are currently in the process of starting a weekly chart for lessons passed for the week.

STRATEGIES TO IMPROVE STATE REPORT CARD SCORE FOR **ACADEMIC ACHIEVEMENT**



**Percentage of Lessons
Passed Each Week**

JMS Strategies for **Give Me Five**

Each grade level has developed its protocol for strategies to ensure needs are being addressed with the **Give Me Five** students.

- Teachers have strategically placed the students in groups during Enrichment classes to better meet their needs.
- They also provide more one-on-one time with the teacher in the classrooms.
- Teachers are monitoring growth through diagnostics and growth monitoring checks to make adjustments as needed to meet student needs.
- We chart progress and discuss **Give Me Five** students in meetings, and what we can do to ensure consistent growth.

JMS Strategies to Encourage Students to Reach Stretch Goals in Reading and Math Incentives

Winter i-Ready Diagnostic

✓ Typical Growth

- 1 subject(or on grade level) will receive **popcorn**
- Both Subjects (or on grade level) will receive a **canteen pass**

✓ Stretch Growth

- 1 subject will receive PJ Day
- Both Subjects will get a **free admission to the home basketball game, a hot dog, and a drink**

✓ Class with Highest Stretch Growth

- The class with the highest percentage of students reaching stretch growth in Reading and Math will receive a **NACHO Party**

✓ Grade Level

- Grade level with the highest percentage of students reaching stretch growth in reading and math will receive an **extra recess**

❖ *If 50% of students meet their stretch goal in at least one subject, Mrs. Squires and Mr. Coleman will wear their PJs to school.*



STRATEGIES TO IMPROVE STATE REPORT CARD SCORE



IDEAS TO DISCUSS FOR JMS