

Murray County High School

Chatsworth, GA

Lighting System

Pole / Fixture Summary						
Pole ID	Pole Height	Mtg Height	Fixture Qty	Luminaire Type	Load	Circuit
A1-A2	60'	60'	1	TLC-LED-1200	1.17 kW	A
		60'	2	TLC-LED-900	1.78 kW	A
		16'	1	TLC-BT-575	0.58 kW	A
B1-B2	70'	70'	2	TLC-LED-1200	2.34 kW	A
		70'	2	TLC-LED-1500	2.86 kW	A
		16'	1	TLC-BT-575	0.58 kW	A
4			18		18.60 kW	

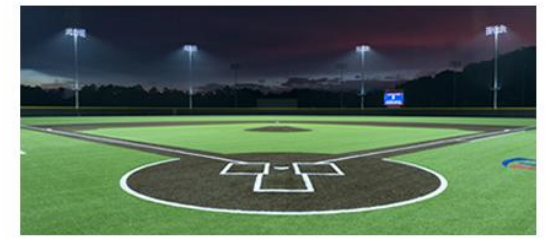
Circuit Summary			
Circuit	Description	Load	Fixture Qty
A	Softball	18.6 kW	18

Fixture Type Summary							
Type	Source	Wattage	Lumens	L90	L80	L70	Quantity
TLC-BT-575	LED 5700K - 75 CRI	575W	52,000	>120,000	>120,000	>120,000	4
TLC-LED-900	LED 5700K - 75 CRI	890W	89,600	>120,000	>120,000	>120,000	4
TLC-LED-1200	LED 5700K - 75 CRI	1170W	136,000	>120,000	>120,000	>120,000	6
TLC-LED-1500	LED 5700K - 75 CRI	1430W	160,000	>120,000	>120,000	>120,000	4

Light Level Summary

Calculation Grid Summary								
Grid Name	Calculation Metric	Illumination					Circuits	Fixture Qty
		Ave	Min	Max	Max/Min	Ave/Min		
Softball Spill/Glare - 150'	Horizontal Illuminance	0.03	0	0.07	0.00		A	18
Softball Spill/Glare - 150'	Max Candela Metric	2398	49.6	6606	133.19	48.35	A	18
Softball Spill/Glare - 150'	Max Vertical Illuminance Metric	0.08	0	0.20	419.52	151.40	A	18
Softball (Infield)	Horizontal Illuminance	50.6	40.9	62.1	1.52	1.24	A	18
Softball (Outfield)	Horizontal Illuminance	31.2	19.6	41.4	2.11	1.59	A	18

From Hometown to Professional



We Make It Happen.

Not to be reproduced in whole or part without the written consent of Musco Sports Lighting, LLC. ©1981, 2021 Musco Sports Lighting, LLC.

EQUIPMENT LIST FOR AREAS SHOWN								
Pole				Luminaires				
QTY	LOCATION	SIZE	GRADE ELEVATION	MOUNTING HEIGHT	LUMINAIRE TYPE	QTY / POLE	THIS GRID	OTHER GRIDS
2	A1-A2	60'	-	60'	TLC-LED-1200	1	1	0
				15.5'	TLC-BT-575	1	1	0
				60'	TLC-LED-900	2	2	0
2	B1-B2	70'	-	70'	TLC-LED-1500	2	2	0
				15.5'	TLC-BT-575	1	1	0
				70'	TLC-LED-1200	2	2	0
4	TOTALS					18	18	0

Murray County High School

Chatsworth, GA

GRID SUMMARY	
Name:	Softball
Size:	Irregular 180' / 206' / 180'
Spacing:	20.0' x 20.0'
Height:	3.0' above grade

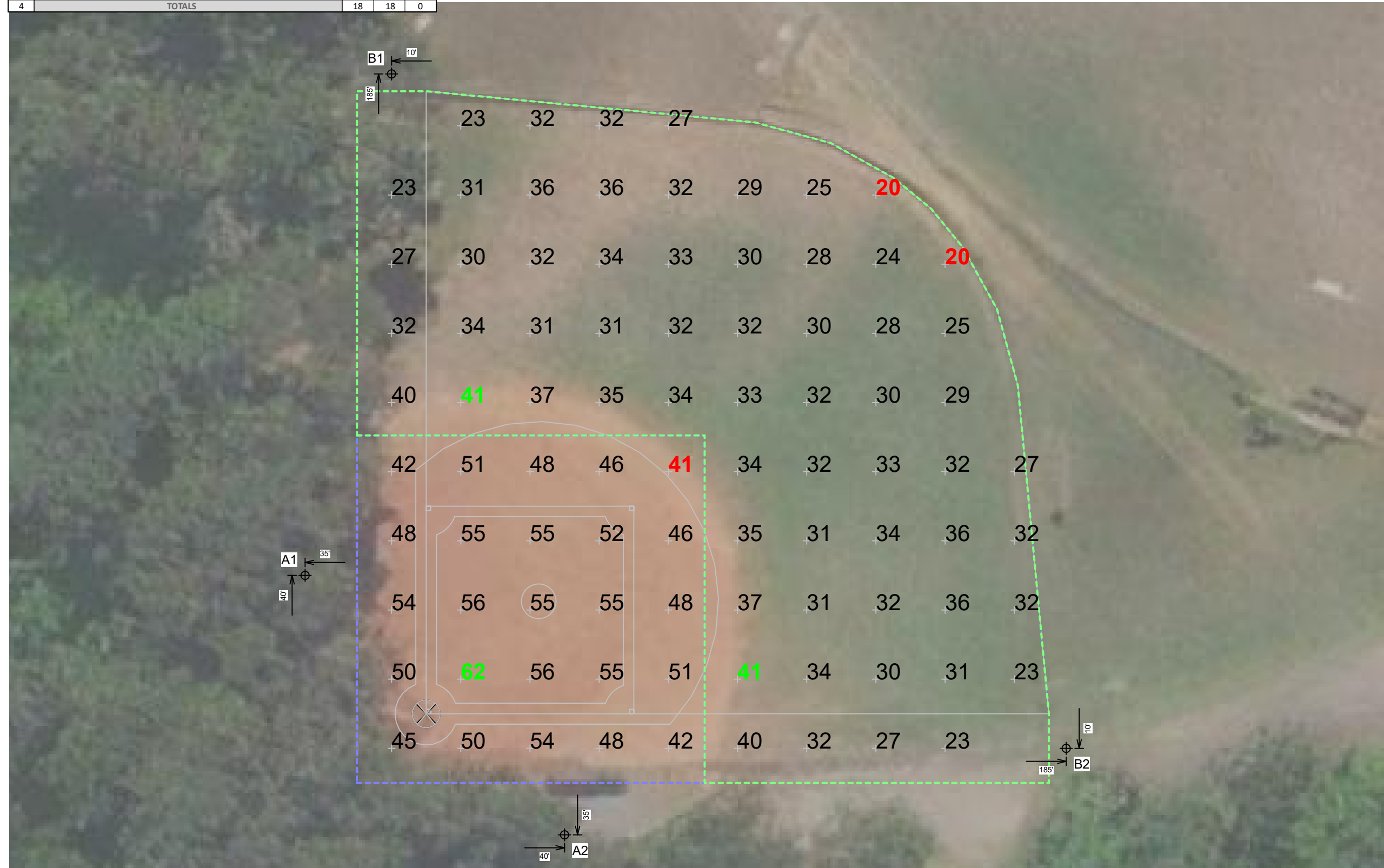
ILLUMINATION SUMMARY		
MAINTAINED HORIZONTAL FOOTCANDLES		
	Infield	Outfield
Guaranteed Average:	50	30
Scan Average:	50.60	31.18
Maximum:	62.11	41.40
Minimum:	40.90	19.63
Avg / Min:	1.24	1.59
Guaranteed Max / Min:	2	2.5
Max / Min:	1.52	2.11
UG (adjacent pts):	1.25	1.39
CU:	0.66	
No. of Points:	25	63
LUMINAIRE INFORMATION		
Applied Circuits:	A	
No. of Luminaires:	18	
Total Load:	18.6 kW	

Guaranteed Performance: The ILLUMINATION described above is guaranteed per your Musco Warranty document and includes a 0.95 dirt depreciation factor.

Field Measurements: Individual field measurements may vary from computer-calculated predictions and should be taken in accordance with IESNA RP-6-15.

Electrical System Requirements: Refer to Amperage Draw Chart and/or the "Musco Control System Summary" for electrical sizing.

Installation Requirements: Results assume ± 3% nominal voltage at line side of the driver and structures located within 3 feet (1m) of design locations.



Pole location(s) ⊕ dimensions are relative to 0,0 reference point(s) ⊗



We Make It Happen.

Not to be reproduced in whole or part without the written consent of Musco Sports Lighting, LLC. ©1981, 2021 Musco Sports Lighting, LLC.

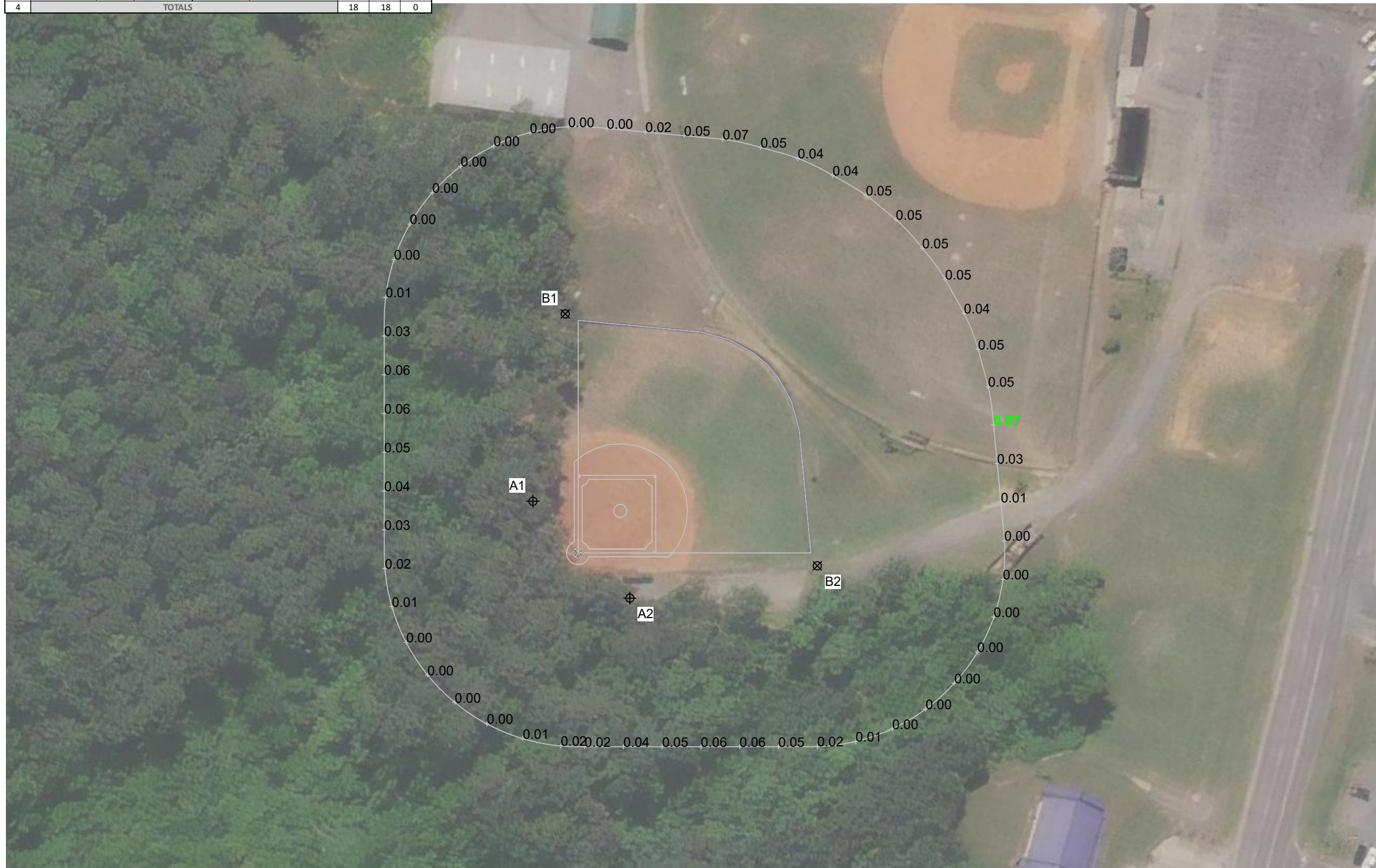
EQUIPMENT LIST FOR AREAS SHOWN

Pole				Luminaires				
QTY	LOCATION	SIZE	GRADE ELEVATION	MOUNTING HEIGHT	LUMINAIRE TYPE	QTY / POLE	THIS GRID	OTHER GRIDS
2	A1-A2	60'	-	60'	TLC-LED-1200	1	1	0
				15.5'	TLC-BT-575	1	1	0
				60'	TLC-LED-900	2	2	0
2	B1-B2	70'	-	70'	TLC-LED-1500	2	2	0
				15.5'	TLC-BT-575	1	1	0
				70'	TLC-LED-1200	2	2	0
4	TOTALS					18	18	0

Murray County High School
Chatsworth, GA

GRID SUMMARY	
Name:	Softball Spill/Glare - 150'
Spacing:	30.0'
Height:	3.0' above grade

ILLUMINATION SUMMARY	
HORIZONTAL FOOTCANDLES	
Scan Average:	Entire Grid 0.0256
Maximum:	0.0704
Minimum:	0.0000
No. of Points:	54
LUMINAIRE INFORMATION	
Applied Circuits:	A
No. of Luminaires:	18
Total Load:	18.6 kW

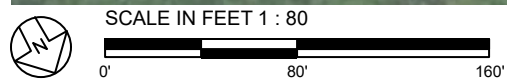


Guaranteed Performance: The ILLUMINATION described above is guaranteed per your Musco Warranty document.

Field Measurements: Individual field measurements may vary from computer-calculated predictions and should be taken in accordance with IESNA RP-6-15.

Electrical System Requirements: Refer to Amperage Draw Chart and/or the "Musco Control System Summary" for electrical sizing.

Installation Requirements: Results assume ± 3% nominal voltage at line side of the driver and structures located within 3 feet (1m) of design locations.



Pole location(s) ⊕ dimensions are relative to 0,0 reference point(s) ⊗



We Make It Happen.

Not to be reproduced in whole or part without the written consent of Musco Sports Lighting, LLC. ©1981, 2021 Musco Sports Lighting, LLC.

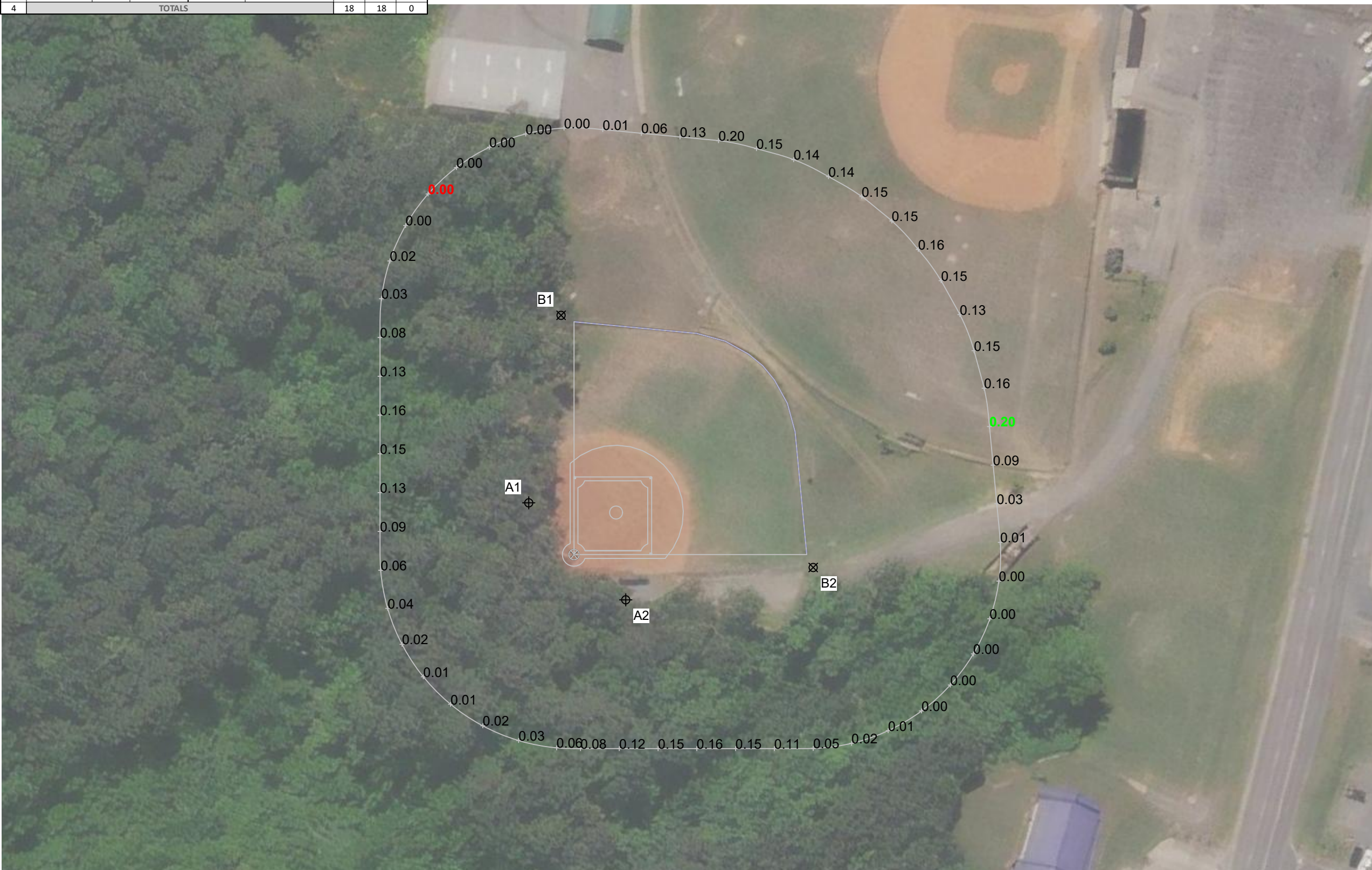
EQUIPMENT LIST FOR AREAS SHOWN							
Pole				Luminaires			
QTY	LOCATION	SIZE	GRADE ELEVATION	MOUNTING HEIGHT	LUMINAIRE TYPE	QTY / POLE	THIS GRID
2	A1-A2	60'	-	60'	TLC-LED-1200	1	1
				15.5'	TLC-BT-575	1	1
				60'	TLC-LED-900	2	2
2	B1-B2	70'	-	70'	TLC-LED-1500	2	2
				15.5'	TLC-BT-575	1	1
				70'	TLC-LED-1200	2	2
4	TOTALS					18	18

Murray County High School

Chatsworth, GA

GRID SUMMARY	
Name:	Softball Spill/Glare - 150'
Spacing:	30.0'
Height:	3.0' above grade

ILLUMINATION SUMMARY	
MAX VERTICAL FOOTCANDLES	
Scan Average:	Entire Grid 0.0757
Maximum:	0.1990
Minimum:	0.0005
No. of Points:	54
LUMINAIRE INFORMATION	
Applied Circuits:	A
No. of Luminaires:	18
Total Load:	18.6 kW



Guaranteed Performance: The ILLUMINATION described above is guaranteed per your Musco Warranty document.

Field Measurements: Individual field measurements may vary from computer-calculated predictions and should be taken in accordance with IESNA RP-6-15.

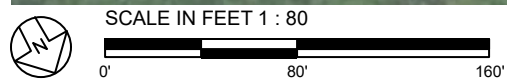
Electrical System Requirements: Refer to Amperage Draw Chart and/or the "Musco Control System Summary" for electrical sizing.

Installation Requirements: Results assume ± 3% nominal voltage at line side of the driver and structures located within 3 feet (1m) of design locations.



We Make It Happen.

Not to be reproduced in whole or part without the written consent of Musco Sports Lighting, LLC. ©1981, 2021 Musco Sports Lighting, LLC.



Pole location(s) ⊕ dimensions are relative to 0,0 reference point(s) ⊗

EQUIPMENT LIST FOR AREAS SHOWN

Pole				Luminaires				
QTY	LOCATION	SIZE	GRADE ELEVATION	MOUNTING HEIGHT	LUMINAIRE TYPE	QTY / POLE	THIS GRID	OTHER GRIDS
2	A1-A2	60'	-	60'	TLC-LED-1200	1	1	0
				15.5'	TLC-BT-575	1	1	0
				60'	TLC-LED-900	2	2	0
2	B1-B2	70'	-	70'	TLC-LED-1500	2	2	0
				15.5'	TLC-BT-575	1	1	0
				70'	TLC-LED-1200	2	2	0
4	TOTALS					18	18	0

Murray County High School
Chatsworth, GA

GRID SUMMARY	
Name:	Softball Spill/Glare - 150'
Spacing:	30.0'
Height:	3.0' above grade

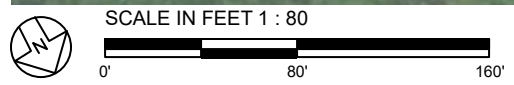
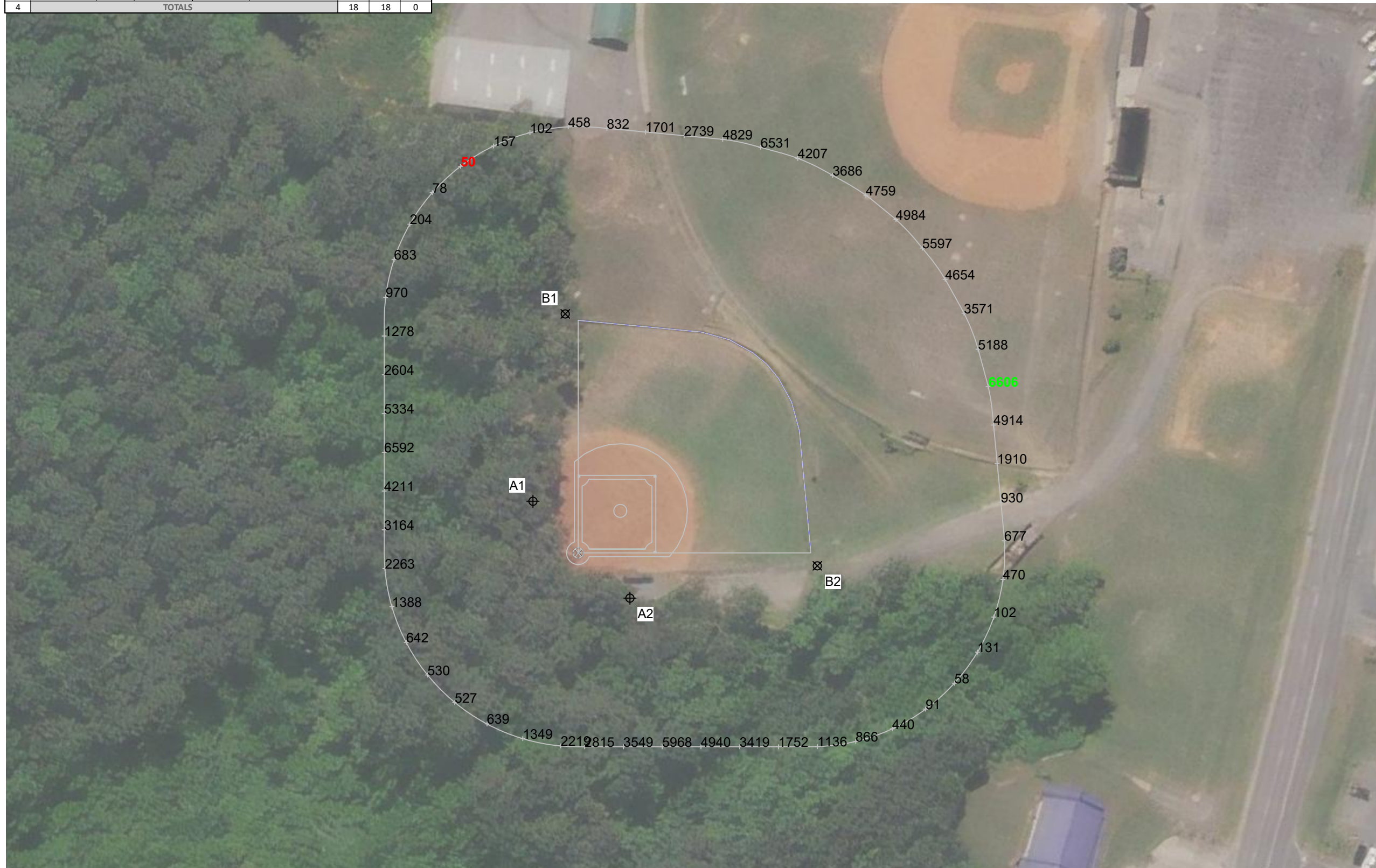
ILLUMINATION SUMMARY	
CANDELA (PER FIXTURE)	
Scan Average:	Entire Grid 2398.0222
Maximum:	6606.2930
Minimum:	49.5998
No. of Points:	54
LUMINAIRE INFORMATION	
Applied Circuits:	A
No. of Luminaires:	18
Total Load:	18.6 kW

Guaranteed Performance: The ILLUMINATION described above is guaranteed per your Musco Warranty document.

Field Measurements: Individual field measurements may vary from computer-calculated predictions and should be taken in accordance with IESNA RP-6-15.

Electrical System Requirements: Refer to Amperage Draw Chart and/or the "Musco Control System Summary" for electrical sizing.

Installation Requirements: Results assume ± 3% nominal voltage at line side of the driver and structures located within 3 feet (1m) of design locations.



Pole location(s) ⊕ dimensions are relative to 0,0 reference point(s) ⊗



We Make It Happen.

Not to be reproduced in whole or part without the written consent of Musco Sports Lighting, LLC. ©1981, 2021 Musco Sports Lighting, LLC.

Murray County High School

Chatsworth, GA

EQUIPMENT LAYOUT

INCLUDES:

· Baseball

Electrical System Requirements: Refer to Amperage Draw Chart and/or the "Musco Control System Summary" for electrical sizing.

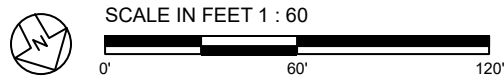
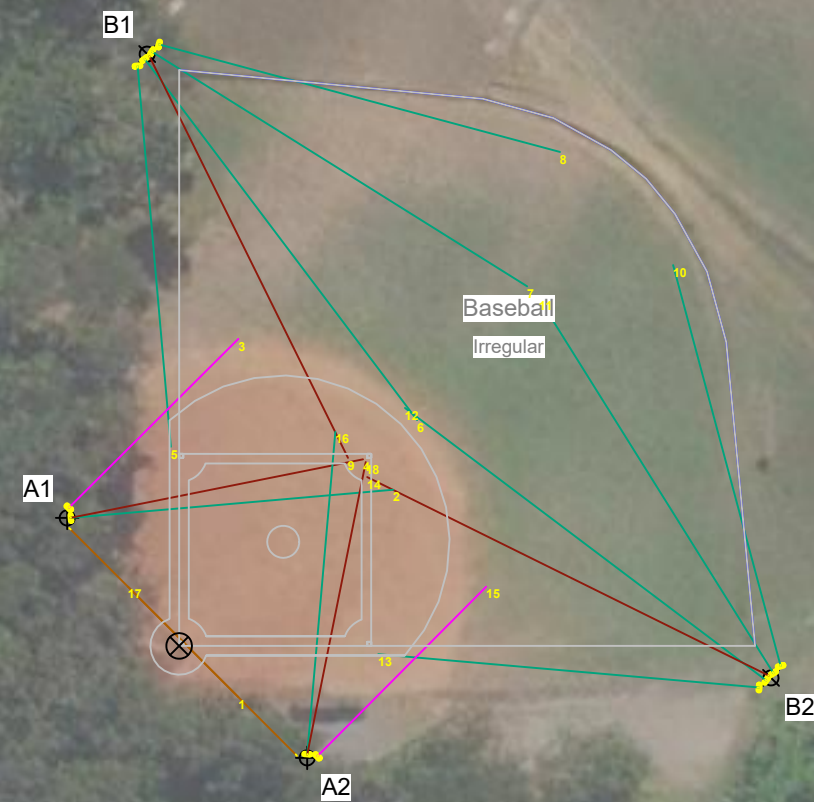
Installation Requirements: Results assume ± 3% nominal voltage at line side of the driver and structures located within 3 feet (1m) of design locations.

EQUIPMENT LIST FOR AREAS SHOWN

QTY	LOCATION	Pole		Luminaires		
		CLASS	GRADE ELEVATION	MOUNTING HEIGHT	LUMINAIRE TYPE	QTY / POLE
2	A1-A2	LSS60AA	-	60'	TLC-LED-1200	1
				15.5'	TLC-BT-575	1
				60'	TLC-LED-900	2
2	B1-B2	LSS70A	-	70'	TLC-LED-1500	2
				15.5'	TLC-BT-575	1
				70'	TLC-LED-1200	2
4	TOTALS					18

SINGLE LUMINAIRE AMPERAGE DRAW CHART

Ballast Specifications (.90 min power factor)	Line Amperage Per Luminaire (max draw)					
	208 (60)	220 (60)	240 (60)	277 (60)	347 (60)	480 (60)
Single Phase Voltage						
TLC-BT-575	3.4	3.2	2.9	2.5	2.0	1.8
TLC-LED-900	5.3	5.0	4.6	4.0	3.2	2.9
TLC-LED-1200	7.0	6.6	6.1	5.2	4.2	4.0
TLC-LED-1500	8.5	8.1	7.4	6.4	5.1	4.7



ENGINEERED DESIGN By: JWinegar · File #213915A · 10-Nov-21

Pole location(s) ⊕ dimensions are relative to 0,0 reference point(s) ⊗



We Make It Happen.

Not to be reproduced in whole or part without the written consent of Musco Sports Lighting, LLC. ©1981, 2021 Musco Sports Lighting, LLC.