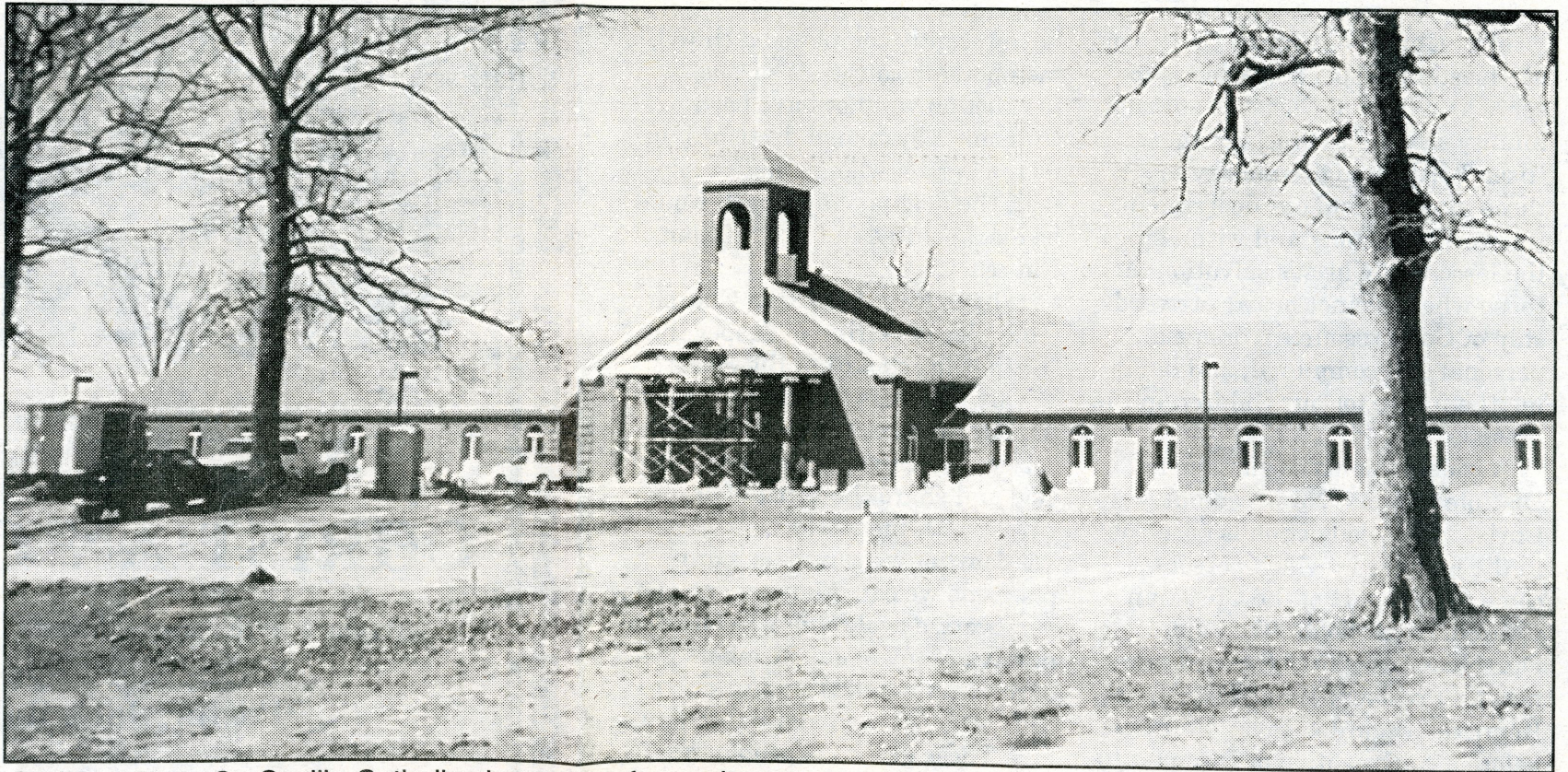


St. Cecilia A Church on the move

Parishoners of St. Cecilia Catholic Church are busily planning the move to their new facility within the next few weeks. The new church is located on a 12-acre site two miles north of U.S. 78 on Alabama 195.

The church has been in their present location west of Jasper on highway 78 for the past 35 years. Staff and parishoners knew that with Corridor X coming through the western city limits of Jasper the move to another location was inevitable. With the community continuing to grow and traffic continuing to increase it was becoming harder and harder to safely turn onto the road to the church. With their new location, St. Cecilia will also have plenty of room for expansion as the church increases in membership and accessibility to the church is much easier on those attending mass.

The new worship center will include a Parish Hall, religious education wing as well as a daily chapel and offices. A number of items will be moved from the present facility to the new one and will include the altar, two marble columns, the unique etched windows and the sta-



Parishoners at St. Cecilia Catholic church look forward to moving in a few weeks to a new location on Alabama 195

tions of the cross. These items of historical importance will ensure continuity of the Parish.

Religious education classes for kindergarten through high school children are held each Sunday.

Adult study groups meet during the

religious education class time. Persons interested in the Catholic Faith attend classes one evening each week during the school year. Anyone wishing to learn about the Catholic faith are welcome to attend any of the services in addition to the weekly inquiry classes.

The parishioners are expected to be in the new church within the next few weeks, hopefully in time for their first Communion and Confirmation Celebration.

Mass is held each Saturday at 5:30 p.m. and each Sunday at 11 a.m.