



*New England School Development Council*

**Rocky Hill Public Schools  
Rocky Hill, CT**

**School Year 2025-26 Enrollment Projection Report**

*Copyright, New England School Development Council, 2025*



# Table of Contents

Section	Page
Enrollment Summary.....	1
Historical Enrollment Table.....	2
Historical Enrollment Graph.....	3
Projected Enrollment Table.....	4
Projected Enrollment Graph.....	5
Historical & Projected Enrollment Graph.....	6
Historical & Projected Enrollment in Grade Combinations Line Graph.....	7
Historical & Projected Enrollment in Grade Combinations Stacked Column Graph.....	8
Birth to Kindergarten Relationship Graph.....	9
Additional Information .....	10
New England PK-12 Enrollment Trends.....	11
Projection Methodology and Reliability .....	12



## Enrollment Summary

NESDEC is pleased to send you this report displaying the past, present, and projected enrollments for your District. It is important to update enrollment projections every year to identify changes in enrollment patterns. Ten-year projections are designed to provide your District with yearly, up-to-date enrollment information that can be used by boards and administrators for effective planning and allocation of resources. We received the enrollment data from the District, and we assume that the method of collecting this data has been consistent from year to year.

Birth data informs Kindergarten enrollment. Each year, NESDEC secures birth data from State sources, providing a snapshot in time as to actual and provisional births as reported by the State, and then uses this birth data to predict Kindergarten enrollments. We only use annual birth data to assure consistency in reporting from year to year. Estimated births, which are an average of the previous five years of birth data, are based on this same snapshot. NESDEC acknowledges the variability of the provisional and the estimated birth data, and notes that the projected Kindergarten enrollments may serve as a guide to future planning.

Enrollment projections are more reliable in Years #1-3 in the future. Projections four to ten years out may serve as a guide to future enrollments and are useful for planning purposes. For more information, please refer to the Projection Methodology and Reliability section of this document.

The NESDEC enrollment projection fell within 18 students of the K-12 total, 2,467 students projected vs. 2,485 enrolled. Note: Ungraded students are not included in K-12 total.

Births decreased by 28 from a previous ten-year average of 198 to a projected average of 170. In most districts, Grades 1-8 are very stable in enrollments. However, there have been decreases in 5 of the 8 most recent years, leading to a net decrease averaging 15 students per year.

Over the next three years, Grades K-3 enrollments are projected to decrease by 85 students, Grades 4-5 enrollments are projected to decrease by 53 students, Grades 6-8 enrollments are projected to increase by 69 students, and Grades 9-12 enrollments are projected to decrease by 72 students, as students move through the grades.



# Historical Enrollment

School District: Rocky Hill, CT

11/13/2025

Historical Enrollment By Grade																			
Birth Year	Births*	School Year	PK	K	1	2	3	4	5	6	7	8	9	10	11	12	UNGR	K-12	PK-12
2010	187	2015-16	49	238	230	215	189	183	203	187	203	196	184	178	173	180	0	2559	2608
2011	191	2016-17	54	197	242	233	200	194	189	190	185	202	181	189	185	182	0	2569	2623
2012	183	2017-18	58	208	219	256	231	210	196	201	197	187	191	183	187	192	0	2658	2716
2013	180	2018-19	59	216	214	215	259	230	219	189	199	198	169	199	187	195	0	2689	2748
2014	216	2019-20	72	207	212	190	213	241	232	211	181	191	185	176	191	195	0	2625	2697
2015	197	2020-21	41	186	207	215	181	213	238	223	208	179	183	185	173	197	< 10 **	2596	2637
2016	221	2021-22	44	210	182	176	210	163	201	222	207	207	160	183	182	180	< 10 **	2490	2534
2017	214	2022-23	57	190	207	183	172	208	164	205	226	202	190	169	184	179	< 10 **	2488	2545
2018	198	2023-24	50	171	181	212	187	173	209	183	210	221	185	183	171	178	< 10 **	2473	2523
2019	188	2024-25	53	164	180	182	214	196	173	217	189	216	206	186	182	164	10	2479	2532
2020	199	2025-26	56	176	172	182	186	225	194	183	210	179	192	204	192	190	14	2499	2555

\*Birth data provided by Public Health Vital Records Departments in each state.

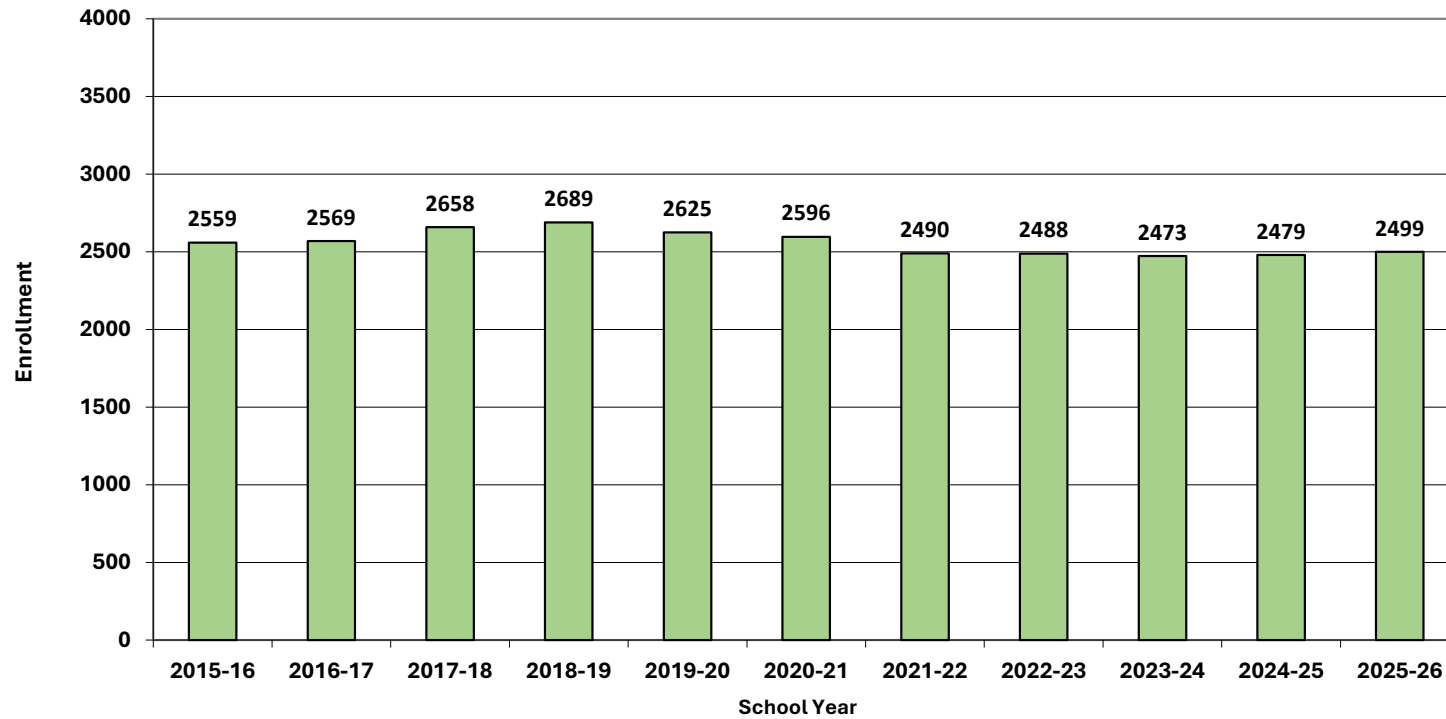
\*\* < 10 Not reported, to protect subgroups with fewer than 10 students.

Historical Enrollment in Grade Combinations										
School Year	PK-5	K-5	PK-3	K-3	4-5	6-8	PK-8	K-8	6-12	9-12
2015-16	1307	1258	921	872	386	586	1893	1844	1301	715
2016-17	1309	1255	926	872	383	577	1886	1832	1314	737
2017-18	1378	1320	972	914	406	585	1963	1905	1338	753
2018-19	1412	1353	963	904	449	586	1998	1939	1336	750
2019-20	1367	1295	894	822	473	583	1950	1878	1330	747
2020-21	1281	1240	830	789	451	610	1891	1850	1348	738
2021-22	1186	1142	822	778	364	636	1822	1778	1341	705
2022-23	1181	1124	809	752	372	633	1814	1757	1355	722
2023-24	1183	1133	801	751	382	614	1797	1747	1331	717
2024-25	1162	1109	793	740	369	622	1784	1731	1360	738
2025-26	1191	1135	772	716	419	572	1763	1707	1350	778

Historical Percentage Changes			
School Year	K-12	Diff.	%
2015-16	2559		
2016-17	2569	10	0.4%
2017-18	2658	89	3.5%
2018-19	2689	31	1.2%
2019-20	2625	-64	-2.4%
2020-21	2596	-29	-1.1%
2021-22	2490	-106	-4.1%
2022-23	2488	-2	-0.1%
2023-24	2473	-15	-0.6%
2024-25	2479	6	0.2%
2025-26	2499	20	0.8%
<b>Change</b>		<b>-60</b>	<b>-2.3%</b>



## Grades K-12 Historical Enrollment





# Projected Enrollment

School District: Rocky Hill, CT

11/13/2025

Enrollment Projections By Grade*																				
Birth Year	Births*		School Year	PK	K	1	2	3	4	5	6	7	8	9	10	11	12	UNGR	K-12	PK-12
2020	199		2025-26	56	176	172	182	186	225	194	183	210	179	192	204	192	190	14	2499	2555
2021	175		2026-27	56	153	178	174	183	190	225	204	185	207	163	190	207	190	14	2463	2519
2022	169	(prov.)	2027-28	56	148	155	180	175	187	190	236	206	182	189	161	192	205	14	2420	2476
2023	165	(prov.)	2028-29	56	144	149	157	181	179	187	200	238	203	166	187	163	190	14	2358	2414
2024	153	(prov.)	2029-30	57	134	145	151	158	185	179	196	202	234	185	164	189	161	14	2297	2354
2025	172	(est.)	2030-31	57	150	135	147	152	162	185	188	198	199	213	183	166	187	14	2279	2336
2026	167	(est.)	2031-32	57	146	151	137	148	156	162	194	190	195	182	211	185	164	14	2235	2292
2027	165	(est.)	2032-33	57	144	147	153	138	152	156	170	196	187	178	180	214	183	14	2212	2269
2028	164	(est.)	2033-34	58	144	145	149	154	141	152	164	171	193	171	176	182	212	14	2168	2226
2029	164	(est.)	2034-35	58	144	145	147	150	158	141	160	165	168	176	169	178	180	14	2095	2153
2030	167	(est.)	2035-36	58	146	145	147	148	154	158	148	161	162	153	174	171	176	14	2057	2115

Note: Ungraded students (UNGR) often are high school students whose anticipated years of graduation are unknown, or students with special needs - UNGR not included in Grade Combinations for 7-12, 9-12, etc.

Based on an estimate of births

Based on children already born

Based on students already enrolled

\*Birth data provided by Public Health Vital Records Departments in each state.

\*\* < 10 Not reported, to protect subgroups with fewer than 10 students.

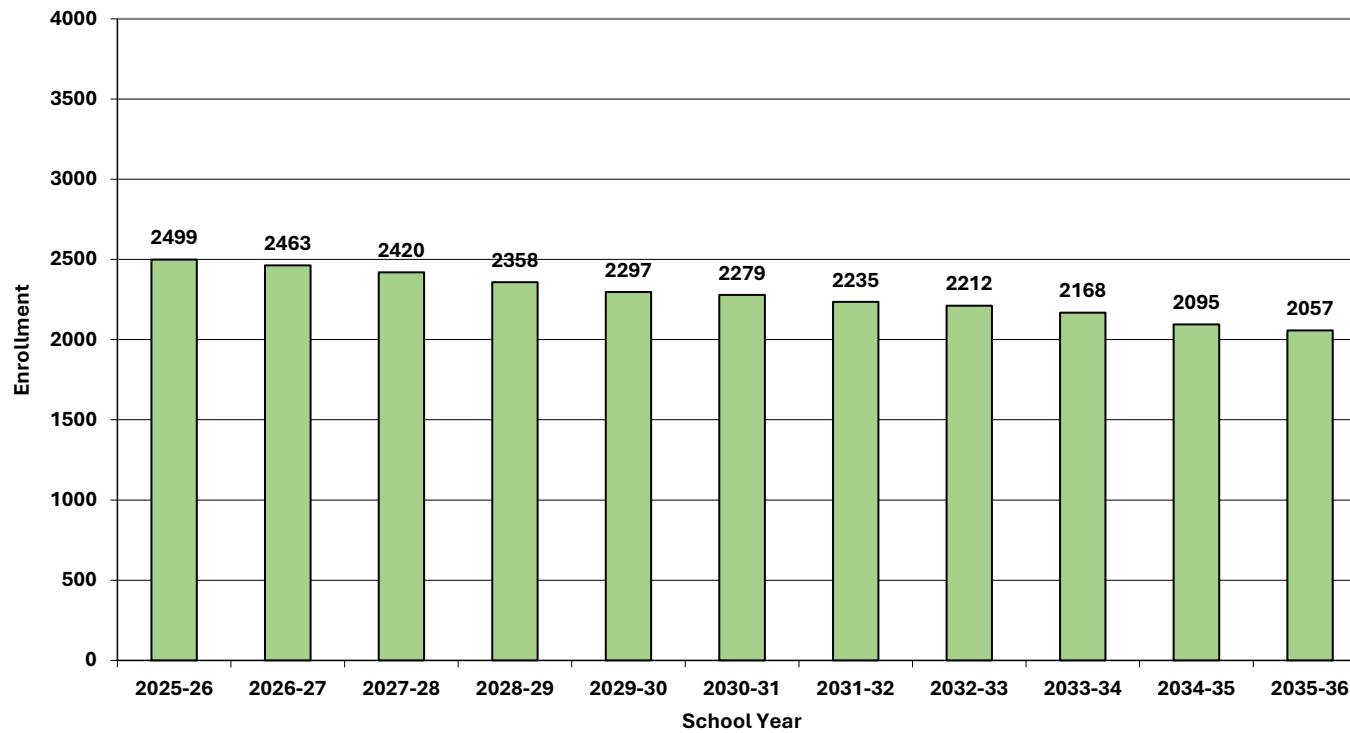
Projected Enrollment in Grade Combinations*										
School Year	PK-5	K-5	PK-3	K-3	4-5	6-8	PK-8	K-8	6-12	9-12
2025-26	1191	1135	772	716	419	572	1763	1707	1350	778
2026-27	1159	1103	744	688	415	596	1755	1699	1346	750
2027-28	1091	1035	714	658	377	624	1715	1659	1371	747
2028-29	1053	997	687	631	366	641	1694	1638	1347	706
2029-30	1009	952	645	588	364	632	1641	1584	1331	699
2030-31	988	931	641	584	347	585	1573	1516	1334	749
2031-32	957	900	639	582	318	579	1536	1479	1321	742
2032-33	947	890	639	582	308	553	1500	1443	1308	755
2033-34	943	885	650	592	293	528	1471	1413	1269	741
2034-35	943	885	644	586	299	493	1436	1378	1196	703
2035-36	956	898	644	586	312	471	1427	1369	1145	674

Projected Percentage Changes			
School Year	K-12	Diff.	%
2025-26	2499		
2026-27	2463	-36	-1.4%
2027-28	2420	-43	-1.7%
2028-29	2358	-62	-2.6%
2029-30	2297	-61	-2.6%
2030-31	2279	-18	-0.8%
2031-32	2235	-44	-1.9%
2032-33	2212	-23	-1.0%
2033-34	2168	-44	-2.0%
2034-35	2095	-73	-3.4%
2035-36	2057	-38	-1.8%
<b>Change</b>		<b>-442</b>	<b>-17.7%</b>

\*Projections should be updated annually to reflect changes in in/out-migration of families, births, and similar factors.

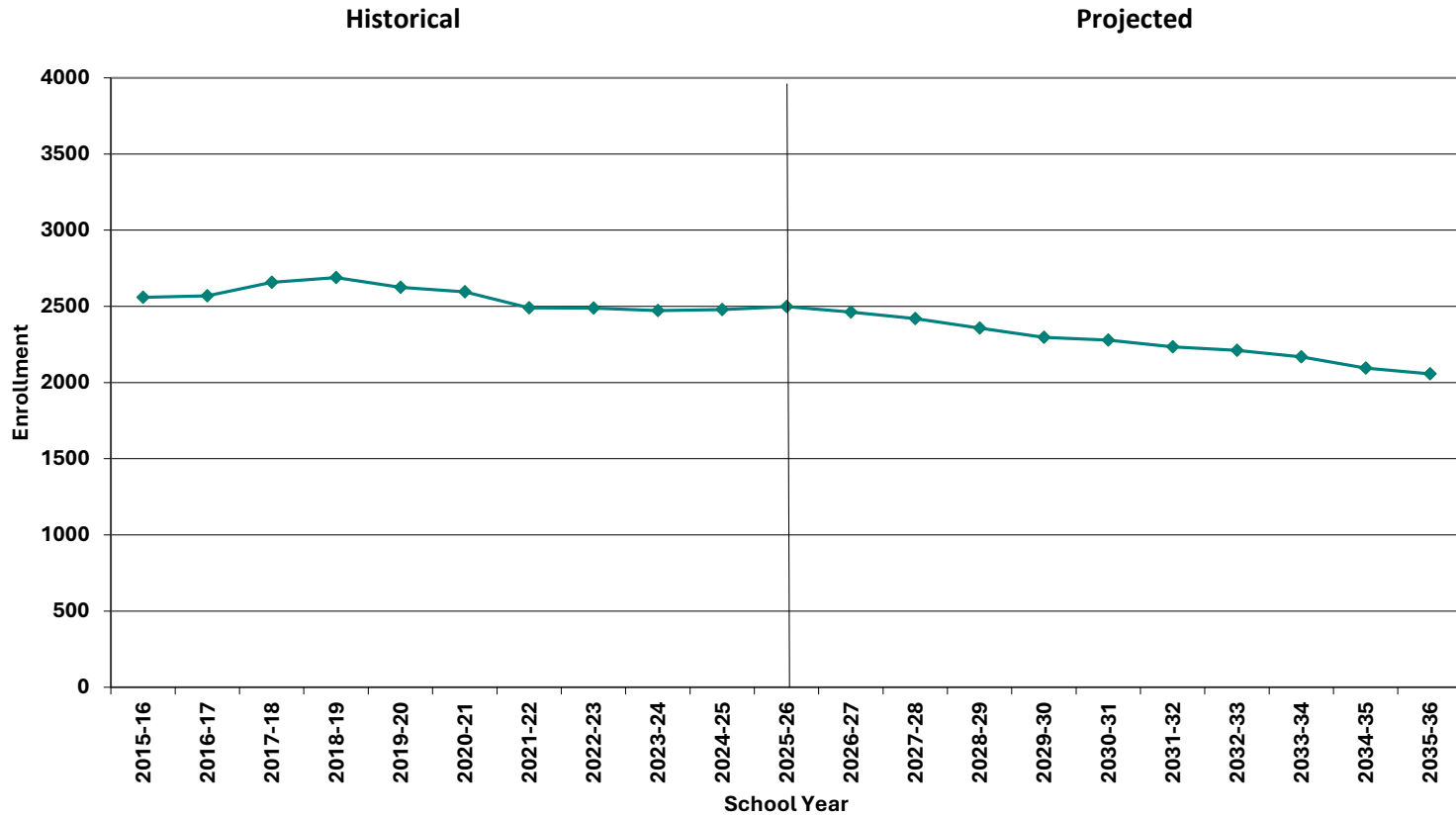


## Grades K-12 Projected Enrollment



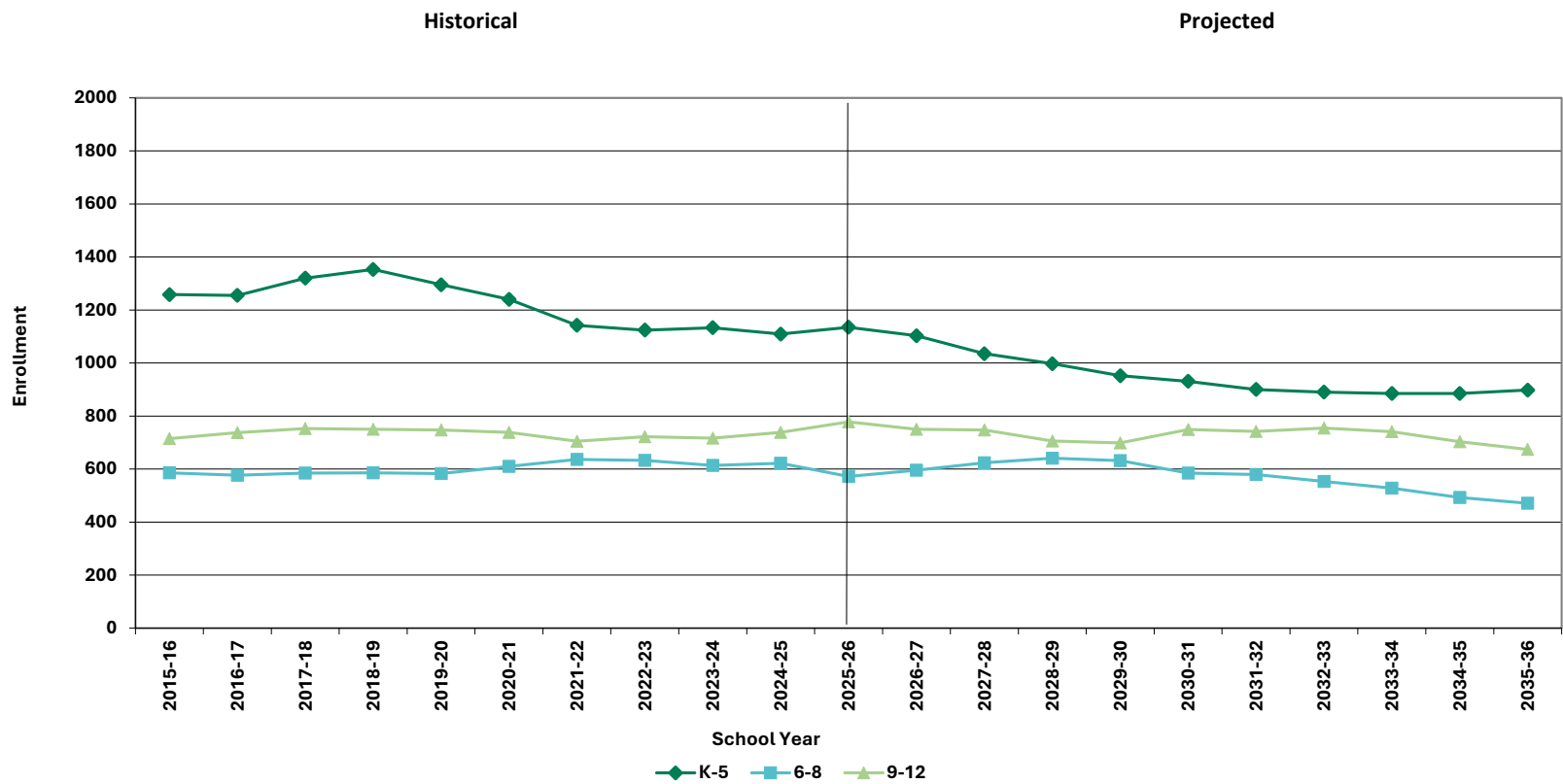


## Grades K-12 Historical & Projected Enrollment



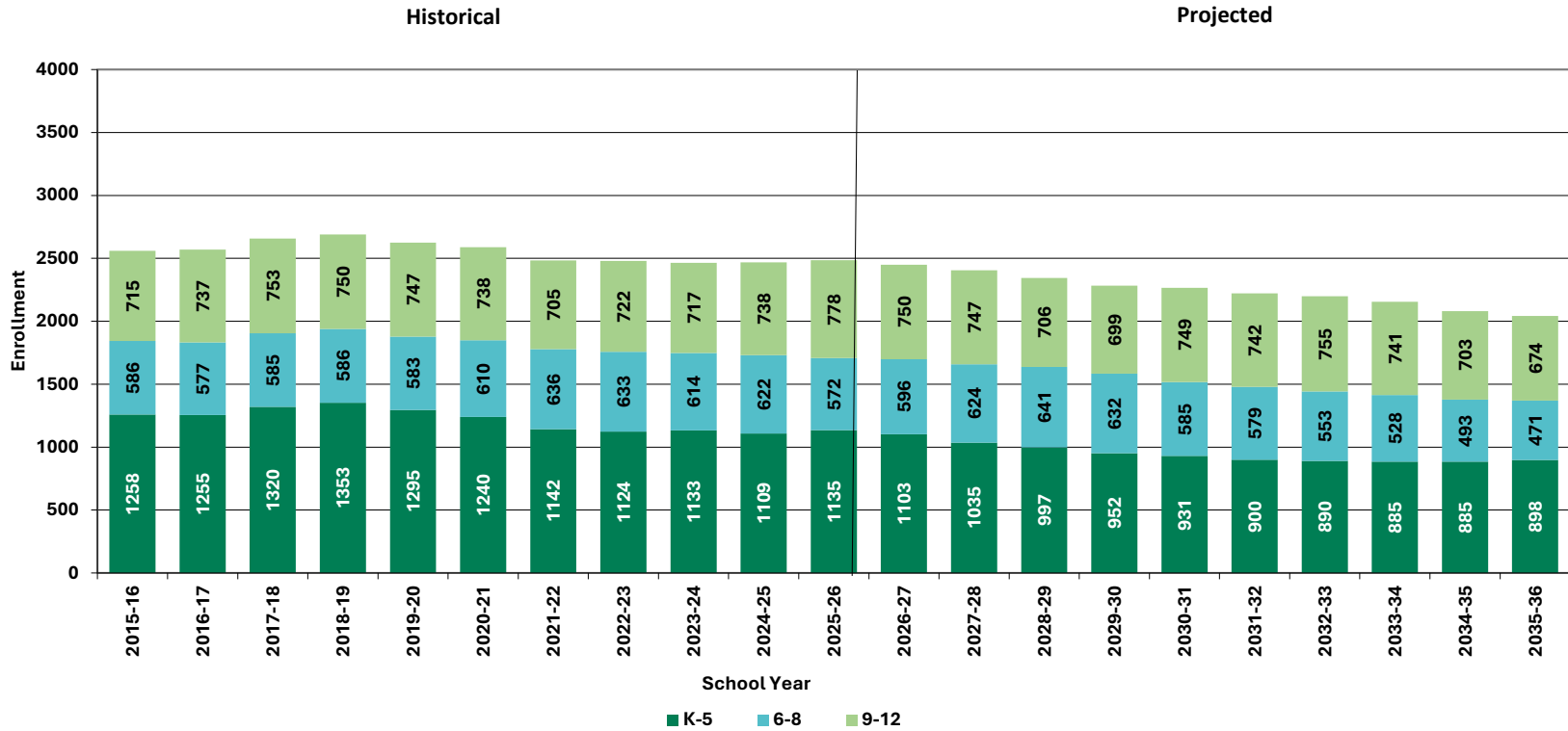


# Historical & Projected Enrollment in Grade Combinations



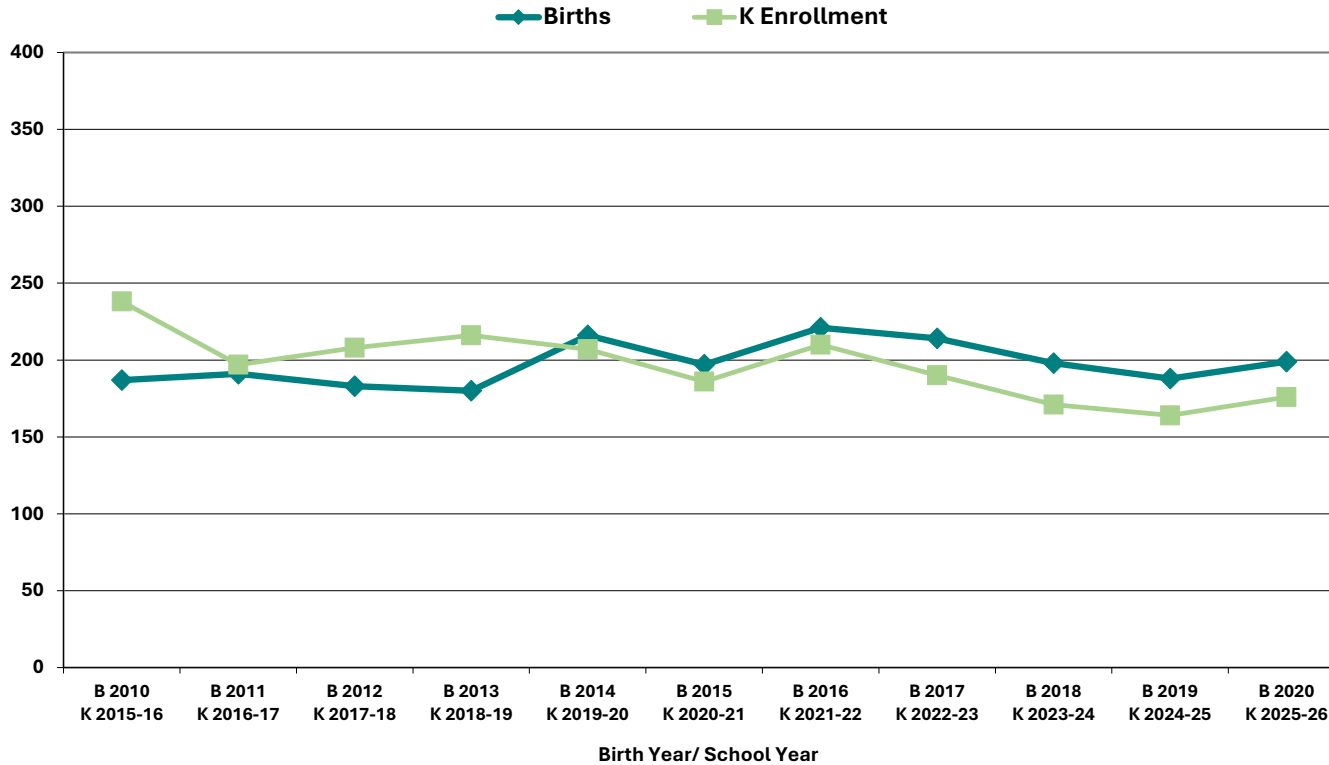


# Historical & Projected Enrollment in Grade Combinations





## Birth to Kindergarten Relationship



	B 2010 K 2015-16	B 2011 K 2016-17	B 2012 K 2017-18	B 2013 K 2018-19	B 2014 K 2019-20	B 2015 K 2020-21	B 2016 K 2021-22	B 2017 K 2022-23	B 2018 K 2023-24	B 2019 K 2024-25	B 2020 K 2025-26
<b>Births</b>	187	191	183	180	216	197	221	214	198	188	199
<b>Kindergarten</b>	238	197	208	216	207	186	210	190	171	164	176



## Additional Information

School Year	9-12 CTE	K-12 Non-Public	K-12 Choice-In	K-12 Choice-Out	K-12 Out District SPED	K-12 Homeschool
2021-22	12	93	10	147	17	41
2022-23	14	95	< 10 **	172	< 10 **	30
2023-24	13	90	< 10 **	195	23	31
2024-25	15	90	< 10 **	211	< 10 **	35
2025-26	n/a	n/a	n/a	12	14	n/a

\* Data provided by District.

"n/a" signifies that information was not provided by District.

\*\* < 10 Not reported, to protect subgroups with fewer than 10 students.



## New England's PK-12 Enrollments Trends

State	Fall 2013 PK - 12	Fall 2019 PK - 12	Fall 2022 PK - 12	Fall 2023 PK - 12	% Change 2013 - 23	% Change 2019-23	% Change 2022-23
USA	50,044,522	50,796,445	49,618,464	49,516,361	-1.1%	-2.5%	-0.2%
CT	546,200	523,690	513,513	512,652	-6.1%	-2.1%	-0.2%
ME	183,995	180,291	173,853	172,545	-6.2%	-4.3%	-0.8%
MA	955,739	959,394	923,349	914,958	-4.3%	-4.6%	-0.9%
NH	186,310	177,351	168,909	166,594	-10.6%	-6.1%	-1.4%
RI	142,008	143,557	137,449	136,154	-4.1%	-5.2%	-0.9%
VT	88,690	86,759	83,654	82,455	-7.0%	-5.0%	-1.4%

Source: U.S. Department of Education, National Center for Education Statistics, Enrollment in public elementary and secondary schools, by region, state, and jurisdiction: Selected years, fall 1990 through fall 2023, Table 203.20, Report Generated Oct. 2024, NESDEC 5.28.25

Although most New England Districts are seeing a decline in the number of births, NESDEC's experience indicates that the impact on enrollment varies from District to District. Almost half of New England Districts have been growing in PK-12 enrollment, and a similar number are declining (often in rural areas), with the other Districts remaining stable.



## Projection Methodology and Reliability

### PROJECTION METHODOLOGY

Cohort component (survival) technique is a frequently used method of preparing enrollment projections. NESDEC uses this method, but modifies it in order to move away from projections that are wholly computer- or formula-driven. Such modification permits the incorporation of important, current district-specific demographic information into the generation of enrollment projections (such as in/out-migration of students, resident births, etc.). Percentages are calculated from the historical enrollment data to determine a reliable percentage of increase or decrease in enrollment between any two grades. For example, if 100 students enrolled in Grade 1 in 2024-25 increased to 104 students in Grade 2 in 2025-26, the percentage of survival would be 104%, or a ratio of 1.04. Ratios are calculated between each pair of grades or years in school over several recent years.

After study and analysis of the historical ratios, and based upon a reasonable set of assumptions regarding births, migration rates, retention rates, etc., ratios most indicative of future growth patterns are determined for each pair of grades. The ratios thus selected are applied to the present enrollment statistics to project into future years. The ratios are the key factors in the reliability of the projections, assuming validity of the data at the starting point.

### RELIABILITY OF ENROLLMENT PROJECTIONS

Projections can serve as useful guides to school administrators for educational planning. Enrollment projections are more reliable in Years #1-3 in the future and less reliable in the “out-years.” Projections four to ten years out may serve as a guide to future enrollments and are useful for planning purposes, but they should be viewed as subject to change given the likelihood of potential shifts in underlying assumptions/trends, such as student migration, births as they relate to Kindergarten enrollment, and other factors.

Projections that are based upon **the children who already are in the district** (the current K-12 population only) will be the most reliable. The second level of reliability will be for those children already **born into the community but not yet old enough to be in school**. The least reliable category is the group for which an estimate must be made **to predict the number of births**, thereby adding additional uncertainty. See these three multi-colored groupings on the “Projected Enrollment” tab.

Annual updates allow for early identification of recent changes in historical trends. When the actual enrollment in a grade is significantly different (higher or lower) from the projected number, it is important (yet difficult) to determine whether this is a one-year aberration or whether a new trend may have begun. **In light of this possibility, NESDEC urges all school districts to have updated enrollment projections developed by NESDEC each October.** This service is available at no cost to affiliated school districts.