




*Bunavola '59*





*Dedication*





It is with filial affection that we, the Student Body of Bunkie High School, dedicate the 1959 Bunavola to our beloved principal, MR. C. L. COUVILLION, in recognition of the patience, kindness, interest, and paternal solicitude which characterize the manner in which each of us is received.

May this dedication be a token of our appreciation, esteem, and love.



*The 1959 Bunavola*







*Proudly Presented by the Staff*



## *Foreword*

We are constantly bombarded with the saying: that school years are the happiest years of our lives; so in order that we might learn for ourselves, the Bunavola staff has selected pictures which will allow us to look back upon our old school days to see if the saying is true.

Let's always keep in our hearts and cherish the fond memories and fellowship that we have experienced here at B. H. S.

The Editor

## *Contents*

*Faculty*

*Classes*

*Organizations*

*Athletics*

*Features*

*Activities*

*Advertisements*



# FACULTY

*I dare do all that may become a man;  
Who dares do more, is none.*

SHAKESPEARE





To the Students of Bunkie High School:

It has been a pleasure to work with you. I consider you one of the finest group of students ever assembled anywhere. We, as teachers, are working together, pooling all of our skills and ingenuity in the hope of giving you the kind of school that will enable each of you to develop to your fullest capacity so that you may take your place in this world as happy, worthy, useful citizens. We recognize this to be a most challenging responsibility, and trust that you will continue to give us your full cooperation in this most important endeavor.

With Love and Admiration,

*C. L. Couvillion*

C. L. Couvillion



WALTER  
WALTER  
Walter, Chas.  
U.S., Boy's C.



WALTER  
WALTER  
Walter, Chas.



WILLIAM  
WILLIAM  
William, P. E.  
Walter, Coach.





WALTER  
BRISTER  
Science, Civics,  
P. E., Boys' Coach.



MARCUS  
BORDELON  
Math, Typing,  
General Business.



MRS. LOIS  
FISHER  
English.



MOTT  
FOREMAN  
General Math,  
Coach.



JAMES  
HAMILTON  
Math, Physics,  
Coach.



JAMES  
MERIDITH  
Biology.



MRS. CARRIE  
McNUTT  
Social Studies.



MOTT  
PALMER  
Music.



C. L.  
REID  
English, Librarian.



RAYMOND  
SABATINI  
English, French.



MRS. PAT  
GUINN  
Science, P. E.,  
Girls' Coach.



MRS. LOLA  
ST. ROMAIN  
Home Economics.



B. G.  
ST. ROMAIN  
Agriculture.



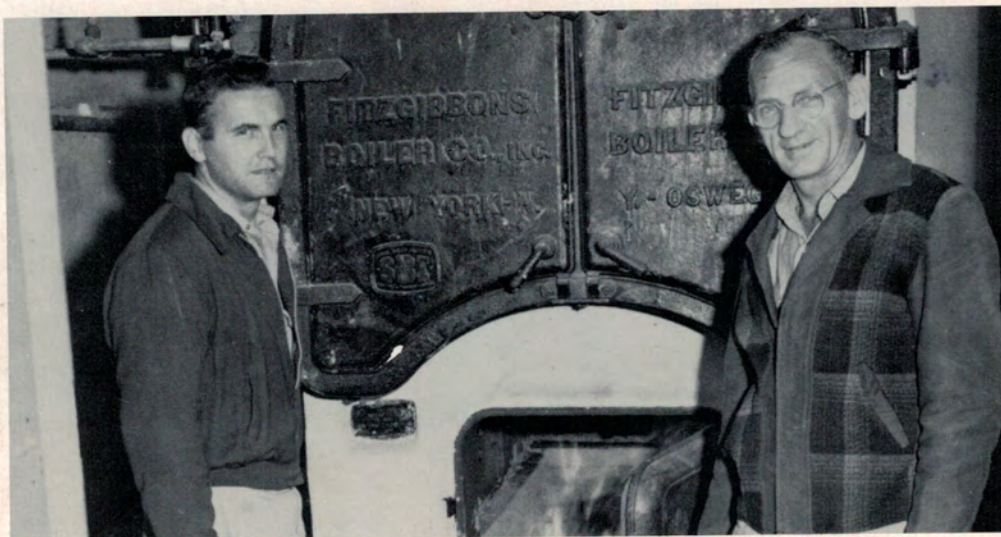
MELVIN  
SHARPE  
Business Education

## Faculty





Mrs. Matthew Lutz  
SECRETARY



Mr. Mayeaux, Mr. Roy  
CUSTODIANS



LUNCHROOM WORKERS

Mrs. Bundrick, Edith Redmon, Rosalie Deshotel, Jocelyn Normand, Mary Gauthier, Nellie Ducote, Betty Jean-sonne, and Mrs. Gremillion.



# CLASSES

*And this our life, exempt from public haunt,  
Finds tongues in trees, books in the running  
brooks,  
Sermons in stones, and good in everything.*

SHAKESPEARE



etty Jean-



# SENIORS

*Tomorrow, and tomorrow, and tomorrow,  
Creeps in this petty pace from day to day,  
To the last syllable of recorded time; . . .*

SHAKESPEARE





# Class Officers



NADINE MAYEAUX, President; GIRARD JUSSSELIN, Vice President; RUTH COTTANO, Secretary; BILL MIXON, F. B. L. A. Rep. ; DIANE KNOLL, Treasurer; JOHNNY SIMPSON, S. C. Rep. ; and MARY CHARLOTTE McCONNELL, Rep.



LORA ANN LEFLER

Transferred from Morrow High. FHA 4; Basketball 4.

FELIX MANUAL LIPOMA

FFA 1; Football 1, 3.



MARY L. LIPOMA

Transferred P. A. Capdeau Junior High. Junior Deputy 2; FHA 2, 3, 4.





DOROTHY ANN ABNEY

"Dot"

Rally 1, 2, 3, 4, Placed Central Rally 123; Junior Deputies 2.

PATSY AGUILLORD

"Patsy"

Homecoming Court 1, 2; Junior Deputies 2; French Club 4.

*Handwritten signature in blue ink.*



HAROLD JOSEPH AYMOND

Transferred from Evergreen High.

MARY GAIL AYMOND

"Merk"

Boosters 1, 2, 3, 4; Basketball 2, 3, 4; 4-H Club 1; FHA 1; Junior Deputy 2; Central, State Rally 3; FBLA 4; Anchor Club 1, 2; Honor Roll 1, 2, 3, 4; Usher for Bacculaureate and Graduation 3.

JAMES RUSHING BAKER

"Jim"

Trumpet 3, 4; FBLA, Officer 4; French Club 4; Junior Deputies 2; Usher for Bacculaureate and Graduation 3.

SARAH KATHERINE BILES

"Loosie"

FHA 1, Officer 2, 3; Anchor Club 1; Junior Deputy 2; 4-H Club 1; Band 1, 2, 3, 4; Majorette 3, 4, Head Majorette 4; Honor Band 2, 3; Trumpet 1, 2, 3, 4; French Club 4, Officer 4; Homecoming Court 1, 2, 3; FBLA 4, Officer 4; FFA Sweetheart 2; State FFA Maid 2; Miss Bunkie 3; Favorite 3; Avoyelles Sugar Maid 4; Miss Personality 4; Honor Roll 1, 2, 3, 4; Avoyelles Cotton Queen 4.

LINDA ANN BUIE

Transferred Magnolia, Arkansas. Band 3, 4; FBLA Officer 4; Junior Deputy 3; Parish Band 3; Pelican Girls' State Alternate 3.

FELIX JOSEPH CERAMI

FFA 1; Football 3.





Junior

2; French

Club 1;  
lly 3;  
3, 4;

JOHN CHARLES SIMPSON  
"Johnny"

Band 1, 2, 3, Officer 4; Class Officer 1, 4; Student Council 4; Usher Baccalaureate, Graduation 3; Pelican State Alternate; Winter Pageant 3; Honor Band 2, 3, 4; Central, State Rally 1, 2, 3, 4.

MARTHA KAY WRIGHT  
"Droopy"

Transferred Evergreen 4; FHA 1, 2, 3, Parish Officer 4; Girls' State 3.

MARY LORENA STAGG

Basketball 1, 2, 3, 4, Captain 3, 4; Parish, District, State 2, 3; FHA 1, 3; Band 1, 2, 3, 4, Officer 4; Parish 3; Band Queen 2; Anchor Club 2; 4-H 2; Class President 2; FBLA 4; Junior Deputy 2; Student Council 3, 4.

MARGARET ANNE WEDAMAN  
"Carrot"

4-H Officer 1; FHA 1, 3, 4; Anchor Club 1, 2; Class Officer 1; Band 1, 2; Boosters 3; Latin Club 3; FBLA 4; French Club 4; Sweet Potato Winner 3.



ROBERT VINCENT

Class President 1; Band 1, 2, Officer 3, President 4; Student Council President 4; Pelican State Delegate 3, Officer; Baccalaureate, Graduation Usher 4; Parish Honor Band 2, 3, 4; FBLA 3, 4; Central, State Rally 1, 2, 3, 4; State Orchestra 4.

KENNETH ROY WEBB  
"Webb"

FFA 1, 2, Officer 3, 4; FBLA 4; Football 1, 2, 3, 4; Basketball 2; "B" Club 3, 4; Homecoming Court 4; Junior Deputy 2.

GLORIA AYMOND  
"Gloy"

FHA 1, 2, 3, 4; Boosters 1, 2, 3; FBLA 4; Junior Deputy 2.

JIMMY MURPHY  
FFA 1, 2, 3, 4; 4-H 1, 2.





GRACE DREW BLALOCK

"Drew"

FHA 1, 2, 3, Parish President 4; Girl of Month 4; Booster 3, Officer 4; Band 1, 2; Honor Band 2; Basketball 3, Co-Captain 4; Anchor Club Officer 2; Trumpet 1, 2, 3; Bunavola 4; Junior Deputy 2; Central, State Rally 2, 3; Winter Carnival Pageant 2, 3; Safety Conference 3; Pianist, Graduation, Baccalaureate 2, 3; Merit Award 3.

VIRGINIA LEE DESELLE

"Ginny"

FHA 2; Junior Deputy 2; French Club 4.



JANEL BLALOCK

FHA 3, 4, Officer 1; Latin Club, Officer 2, 3; French Club, President 4; Miss Bunkie Alternate 4; Trumpet 1, 2, 3, Editor 4; Boosters 1, Officer 2, 3, 4; Central, State Rally 3; Junior Deputies 2.

DORIS JEAN ELLERBEE

"Static"

FHA 1, 4; Junior Deputy 2.

RUTH MARIE COTTANO

"La Ruth"

FHA 1, 2, Officer 3, President 4; Class Officer 3, 4; Honor Roll 1, 2, 3, 4; Anchor Club 1, 2; 4-H Club 1; Usher Baccalaureate 3.

MARILYN ANN DUCOTE

"Mally"

Boosters 1, 2, 3, 4; Basketball 3, 4; Junior Deputy 2; State Rally 3; Honor Roll 1, 2, 4; 4-H 1; FBLA 4.

TED CARTER

Trumpet; FFA 1, 2, 3, 4.

ROBERT PAUL CHATELAIN

"Bobby"

Football 3, 4; "B" Club 3, 4; Basketball 2, 3, 4; FHA Beau 4; Usher for Baccalaureate, Graduation 3; Trumpet 2, 3; Bunavola 3, Business Manager 4; FBLA President 4; Favorite 3; Winter Carnival Pageant 3; 4-H 1; Latin Club 2; Homecoming 4; Safety Conference 4; Honor 1, 3; FBLA National Convention 4; Junior Deputy 2; Band 2; Merit Award 3.





Month 4;  
nd 2;  
o Offi-  
r Dep-  
Carni-  
anist,  
ward 3.

CECELIA ANNE QUIRK  
"CeCe"

FHA 1, 2, 3, Officer 4; Band 1; Majorette 2;  
4-H 1; Class Officer 1, 2; Trumpet 1, 2, 4; FHA  
Sweetheart 3; Homecoming Court 1, Queen 4;  
Favorite 2; Winter Pageant 1, 3; FBLA 4; Junior  
Deputy 2.

MICHEAL DAMIEN RABALAIS  
"Mike"

FFA 1, 2, Officer 3, 4; FBLA 3, Officer 4; Stu-  
dent Council 4; Pelican State 3.

A. G. REDMOND

Football 4; "B" Club 4; FFA 1, 2, 3, Officer 4.

ROBERT LEWIS REITZELL

FBLA 3; Band 1; Football 3, 4; Junior Deputy 2;  
4-H 1; Homecoming Court 4.



2, 3;  
ternate  
Officer  
ities 2.



OPAL JUNE ROBERT  
Transferred from Evergreen High 4.

VIRGINIA ROY  
"Valley"

FHA 1, 2, 3, 4; Junior Deputy 2; Band 1, 2, 3, 4.



SANDRA SUE SEHON

FHA 1, 4; Boosters 1, 2, 3, Officer 4; Basketball  
1, 2, 4, Co-Captain 3; Junior Deputy 2; State  
Rally 3; Trumpet 4; Usher Baccalaureate, Grad-  
uation 3; Honor Roll 1, 2, 3, 4; 4-H 1.

AMANDA SLOCUM  
"Nookie"

Transferred from Evergreen High.





PAULINE FRANKLIN  
Band 1, 2, 3, 4; FHA 1, 3, 4; 4-H 1; Junior Deputy 2.

DAYTON GUILLOT  
FFA 1, 2, 3, 4; FBLA 4; Junior Deputy 2.



SHIRLY ANN JEANSONNE  
"Shirl"  
FHA 1, 2, 3, 4; Junior Deputy 2; 4-H 1.

GIRARD PAUL JUSSSELIN  
"Jay"  
FFA 1, Officer 3, 4; Football 1, 2, Captain 3, 4; Basketball 1, 2, 3, 4; Class Officer 2, 3, 4; Student Council 3, 4; Trumpet 2, 3, 4; Avoyelles FFA Federation 3, 4, Secretary; Junior Deputy 2; Homecoming Court 3, 4; Favorite 1, 2, 3; FHA Beau 3; "B" Club 2, 3, 4, Officer 3, 4, President 4.

YVONNE MARY HIMEL  
"Von"  
FHA 1, 2, 3, 4; Junior Deputy 2; 4-H 1.

AUDREY DIANE KNOLL  
"D"  
Student Council 1, 2, 3, 4; Class Officer 1, 2, 4, President 3; Booster 1, 2, 3, President 4; FHA 1; Basketball 2, 3, 4; Bunavola 3, Editor 4; FBLA 4; 4-H 1; Favorite 3; Homecoming Court 3, 4; Anchor Club 1; Central, State Rally 3; Usher Baccalaureate, Graduation 3; Miss Bunkie Alternate 3, 4; FFA Maid 3; Pelican State, Safety Conference Delegate 3; Honor Roll 1, 2, 3, 4; Latin Club Officer 2, 3; Avoyelles Sugar Maid 3; Merit Award 1, 3.

PATSY ANNE KELLEY  
FFA 1; Band 1, 2, 3, 4; State Band 4; Junior Deputy 2; FBLA 4; Honor Band 2, 3, 4.

HAVAGE LACHNEY  
"Lash"  
FFA 1, 2, 3, 4; FBLA 4.





NADINE MAYEAUX

"Dine"

Parish Gov. Day 1; Class Officer 2, 3, President 4; Band 1, 2, 3, 4; Honor Band 3, 4; FHA 1, 3, Officer 4; 4-H 1; Band Queen 4; Junior Deputy 2; Pelican State Delegate 3.

LOUENA MICHOT

"Lou"

FHA 1, 3, 4; 4-H 1, 2; Junior Deputy 2; French Club 4.

LENA MAYE MILLIGAN

FHA 1; Junior Deputy 2; French Club 4.

WILLIAM WEST MIXON

"Billy"

Football 1, 3, 4; Basketball 3, 4; "B" Club 3, 4, Officer 4; Class Officer 3, 4; French Club 4; Trumpet 3, 4; FBLA Officer 4; Junior 2; Homecoming Court 4.



Dep-

2.

1.

in 3, 4;  
Student  
FFA  
2;  
FHA  
resident 4.



MARY CHARLOTTE McCONNELL

"Mac"

Class Officer 4; FHA 1, 2; Band 1, 2; Honor Band 2; FBLA 4; Anchor Club 1; 4-H 1, 2; Junior Deputy Captain 2; Avoylles Sugar Maid 4; Trumpet 1, 2; Latin 2.

JOHN JAY NASH

"Jay"

FFA 1, 2, 3, 4; Junior Deputy 2.

MARCIA MARIE NETTLES

"Re Re"

FHA 4; Booster 1, 2, 3; Anchor Club 1; French Club 4; Junior Deputy 2.

SHIRLEY ORTEGO

FHA 1, 3, 4; Band 1, 2; 4-H 1, 2; Junior Deputy 2.







FREDA MARY FIRMIN  
"T"  
Transferred from Evergreen High 4.

JERRY FIRMIN  
Football 3; FFA 4; FBLA 4; Junior Deputy 2.



ALBERT DAVID FRANK  
FFA 1, 2; Football Manager 2; Junior Deputy 2.

PAULETTE FRANKLIN  
"Pouch"  
FHA 1, 3, 4; Band 1, 2, 3, 4; 4-H 1; Junior Deputy 2.

JERRY GALLAND  
Band 1, 2, 3, 4; FBLA 3, 4; Basketball 3, 4; Football 2; Honor Band 2, 4; Parish Band 3; Junior Deputy 2.

ELSIE MARIE GREMILLION  
Transferred Evergreen High 4; Basketball 4; FBLA 4.

NATHALIE ANN GUILLOT  
"Teedie"  
4-H 1; Booster 1, 2, 3, Officer 4; Cheerleader 2, 3, Head 4; FHA 1; Junior Deputy 4; FBLA Officer 4; Homecoming Court 2, 3, 4.

RAYMOND JUDE GUILLORY  
FFA 1, 2, 3, 4, Officer 4; Junior Deputy 2.





PAT ST. AMANT  
 FFA 1, 2, 3, 4, Officer 3, 4; 4-H 1; Junior Deputy 2.

MADONNA MAGDALENE KOJIS  
 "Donna"  
 FHA 1, 2, 3, Officer 4; Class Officer 2; FBLA Officer 4; Usher Graduation, Baccalaureate 3; Honor Roll 1, 2, 3, 4; Anchor Club 1; Junior Deputy 2; Girl of Month 4; 4-H 1, 2.

JAMES BIGGS MERIDITH  
 "Pete"  
 Transferred St. Francisville.

RICHARD OLIVER LADNIER  
 "Buddy"  
 FFA 1; Outstanding Greenhand 1; Football 1, 2, 3, 4; "B" Club 3, 4; Class Officer 3; Student Council 3; FBLA 4; Junior Deputy 2; Homecoming Court 4.



MARY LOUISE LAFLEUR  
 "Mary"

Booster 1, 2; FHA 1; Junior Deputy 2; French Club 4; FBLA 4.

MYRTLE JEAN LAFLEUR

FHA 1; Booster 1, 2, 3, 4; Junior Deputy 2; French Club 4; FBLA 4.



SENIORS !? LONG AGO.





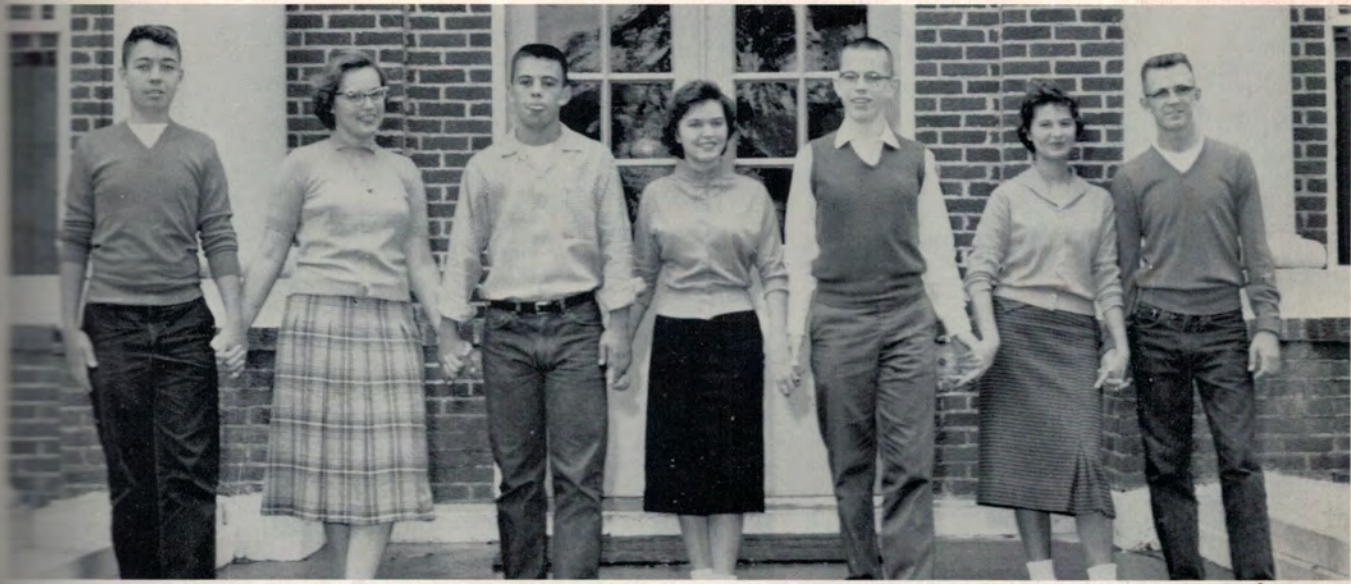
# JUNIORS

*To be, or not to be: that is the question:  
Whether 'tis nobler in the mind to suffer  
The slings and arrows of outrageous fortune,  
Or to take arms against a sea of troubles,  
And by opposing end them.*

SHAKESPEARE



# Class Officers

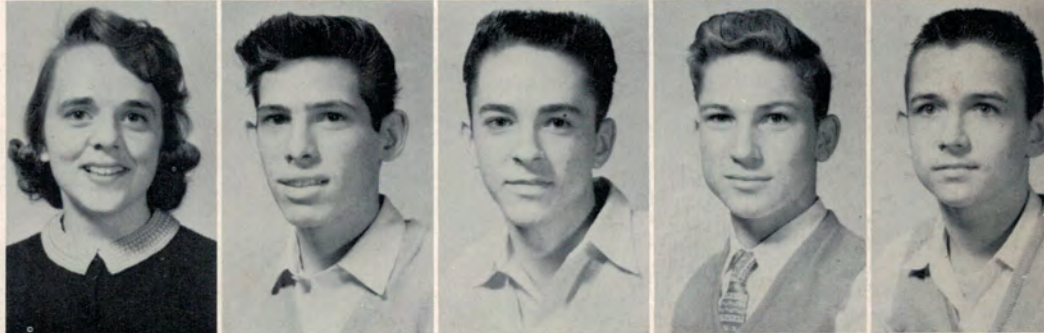


LEONARD ARMAND, President; CHRISTIE BLALOCK, Vice President; BOBBY CULLEN, Treasurer; ROSA MARY FORD, Secretary; J. K. POLLARD, Rep. ; CAROL BRYAN, FBLA Rep. ; and TONY GAUTHIER, S. C. Rep.

QUIRK, LEROY  
NEED, CHARLES  
REYNOLDS, WAYNE  
BICHE, KATHERINE  
WY, EDSSEL



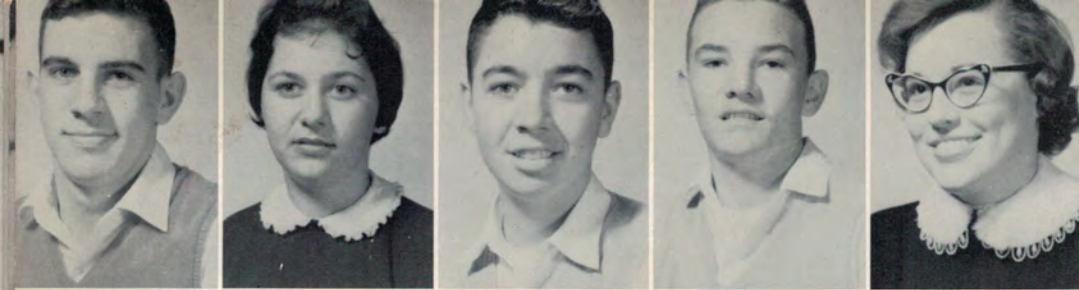
SWYTER, LINDA  
SMITH, JERRY  
SMITH, BOBBY  
STAGG, PHILIP  
SWANSON, LOUIS



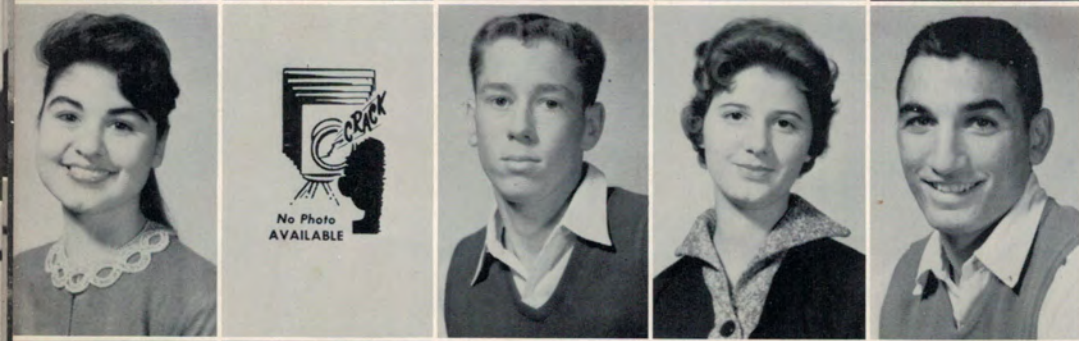
THELOT, MARVIN  
TURNER, JAMES  
WILLIAMS, CAROLYN  
WILSON, BARBARA  
WONG, DOROTHY







ARMAND, ANTHONY  
 ARMAND, FAYE  
 ARMAND, LEONARD  
 AYMOND, A. J.  
 BLALOCK, CHRISTIE



BARNES, PATRICIA  
 BARNES, QWENDOLY  
 BOONE, BRENT  
 BRYAN, CAROLYN  
 BUNDRICK, GEORGE

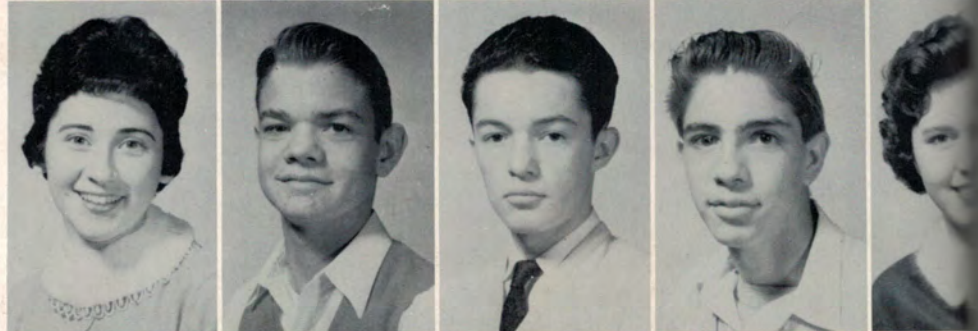


BURELEIGH, MARIE  
 CULLEN, BOBBY  
 COMEAUX, SALETA  
 CONSTANT, WARREN  
 CULLEN, WALLACE

DAIGREPONT, FRED  
 DAUZAT, ROBERT  
 DAVIS, JUDY  
 DUFOUR, BETTY  
 DUPONT, DONALD



DUPUY, ROMONA  
 DURRETT, DAVID  
 DUCOTE, MARVIN  
 EARLY, JOHNNY  
 FORD, ROSA MARY



FIRMIN, DONNA  
 FRANK, JAMES  
 FRANKS, ALTON  
 GAUTHIER, TONY  
 GRAHAM, BEVERLY





ANTHONY  
FAYE  
LEONARD  
A. J.  
CHRISTIE



GUILLORY, DANIEL  
GUILLORY, DONALD  
HARRIS, JUDY  
GLORIOSO, NICKIE  
HYSON, KATHY

PATRICIA  
QWENDOLYN  
RENT  
CAROLYN  
T. GEORGE



JOHNSON, CAROL  
JUNEAU, M. J.  
KELLEY, GERTRUDE  
KELLEY, TOMMY  
LACHNEY, LEO

H, MARIE  
BOBBY  
K, SALETA  
T, WARREN  
WALLACE



LABORDE, OTIS  
LAFLEUR, DONNA  
LAFLEUR, FRANCIS  
LANGLEY, SUE  
MARCOTTE, D. L.



MAITEAUX, ALICE  
MAITEAUX, BARBARA  
MARCANTEL, BARBARA  
MAGUIRE, CYNTHIA  
MELANCON, GENE



MORICE, JERRY  
MORAND, JOCELYN  
MORRY, ELOISE  
MULLINO, BARBARA  
MURPHY, PETER



MURPHY, STEVE  
MURPHY, HENRY  
MURPHY, LOUIS  
MURPHY, BARBARA  
MURPHY, I. K.





# SOPHOMORES

*Life's but a walking shadow, a poor player  
That struts and frets his hour upon the stage  
And then is heard no more:*

SHAKESPEARE



# Class Officers



CECIL SINGLETON, President; MIKE CLARK, S. C. Rep; MARY BILES, Vice President; LLOYD TURNER, Secretary; JANET NEWMAN, Treasurer; RONNIE KELLER, F.B.L.A. Rep.; and DIANE ZIMMERMAN, Rep.

Allums, Harvey  
Baronne, A. J.  
Beck, Richard  
Biles, Mary  
Boone, Theresa



Bordelon, Diane  
Brocato, Kenneth  
Bundrick, Patricia  
Ceram, John  
Chapman, Marion



Clark, Mike  
Courville, May  
Dauzat, Ina Ray  
Dauzat, Sanford  
Deshotel, Deloris



Deshotel, Jeanette  
Deshotel, Katherine  
Didier, Newton  
Ducote, Antoinette  
Ducote, Evelyn







Ducote, Nellie  
 Ducote, Tommy  
 Dupont, Diane  
 Earles, Rachel  
 Escude, Joan

Earnest, Charles  
 Evans, Gerry  
 Frank, Carol Jean  
 Franks, Betty Sue  
 Fontenot, Ann Joyce

Gauthier, Linda  
 Goudeau, Emma  
 Guidry, Gilbert  
 Guzzo, E. J.  
 Harper, Wayne

Hansen, Linda  
 Higginbotham, Clary  
 Hinckly, Gayle  
 Holland, Harold  
 Holston, Maudie

Jeansonne, Betty  
 Jeansonne, Herbert  
 Jeansonne, Leon  
 Johnston, Joyce  
 Johns, Micheal

Jusselin, Edward  
 Keller, Ronnie  
 Kelley, Jane  
 Lachney, Curley  
 Landry, Mary Rose

Leger, Louis  
 Lemoine, Jake  
 LaPrairie, Oliver  
 Marcelle, Wardelle  
 Mathiew, Marvin





Charles  
my  
ne  
el  
n  
  
Charles  
ry  
rol Jean  
etty Sue  
Ann Joyce

er, Linda  
au, Emma  
, Gilbert  
. E. J.  
r, Wayne



Mayeaux, Louise  
Mayeaux, Richard  
Michot, Minerva  
Milligan, Hanson  
Milligan, Stella

Newman, Janet  
Ortego, Evelyn  
Overby, Richard  
Palermo, Vincent  
Parker, Billy

Pierce, John  
Prudhomme, Frank  
Rabalais, Kitty  
Redmon, Edith  
Savant, Betty



Sehon, Beverly  
Singleton, Cecil  
Slocum, Patsy  
Socia, John  
Stagg, Danny



Strauss, Mary  
St. Amand, Larry  
Tagliarino, Andrew  
Thayer, Randy  
Trump, Martha



Tubre, Davis  
Turner, Dianne  
Turner, Lloyd  
Veillion, Buford  
Whisman, Judith



Wilson, Shirley  
Zimmerman, Dianne





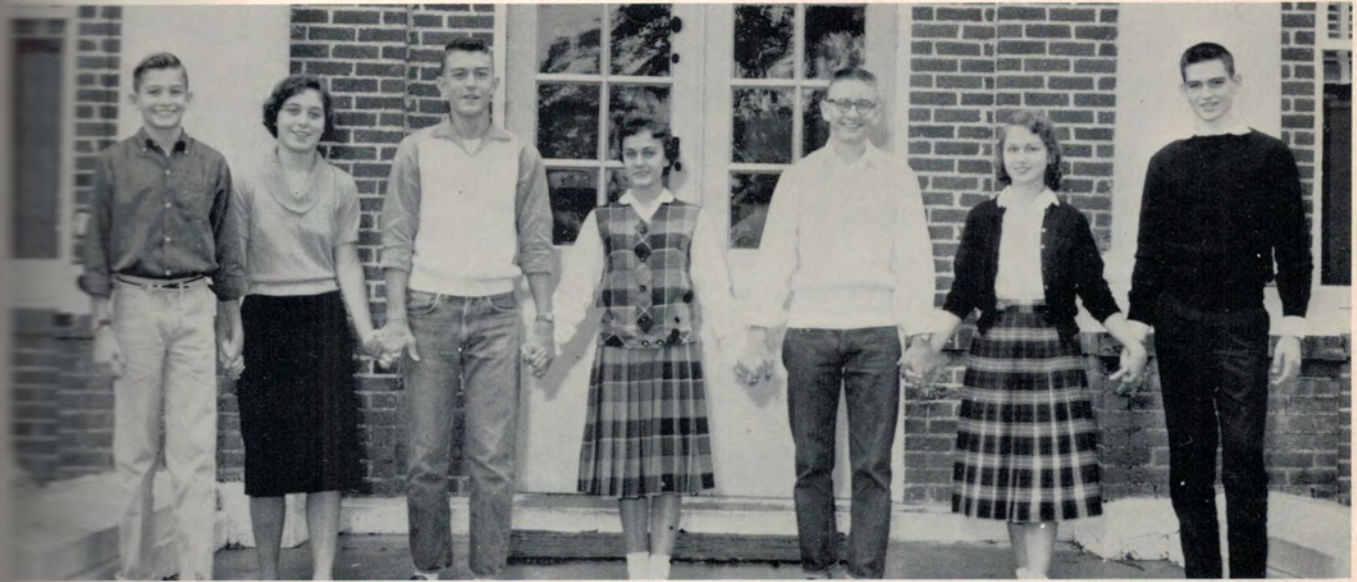
# FRESHMEN

*His life was gentle, and the elements  
So mixed in him, that Nature might stand up,  
And say to all the world, 'This was a man!'*

SHAKESPEARE

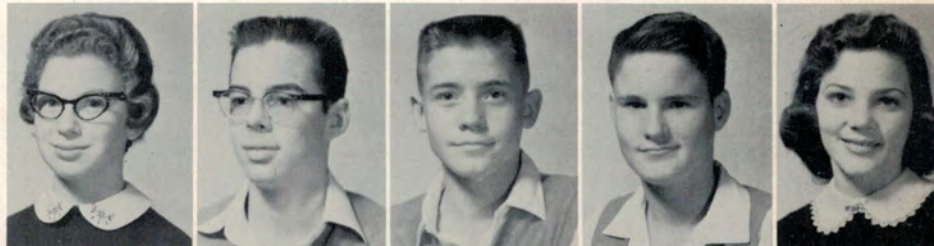


# Class Officers



JOHN LUKE, President; JULIA WEDAMAN, Secretary; MIKE KENT, Vice President; CLAIRE RABALAIS, Treasurer; JAMES MIXON, F. B. L. A. Rep. ; MYRTLE POPE, Rep. ; JIMMY KNOLL, S. C. Rep.

Billeaud, Catherine  
Blalock, Buddy  
Bordelon, Glynn  
Breux, Larry  
Bubenzer, Lucille



Buckley, Rhoda  
Charrier, Leonard  
Chenevert, Barbara  
Clark, Charlotte  
Corrado, Donald



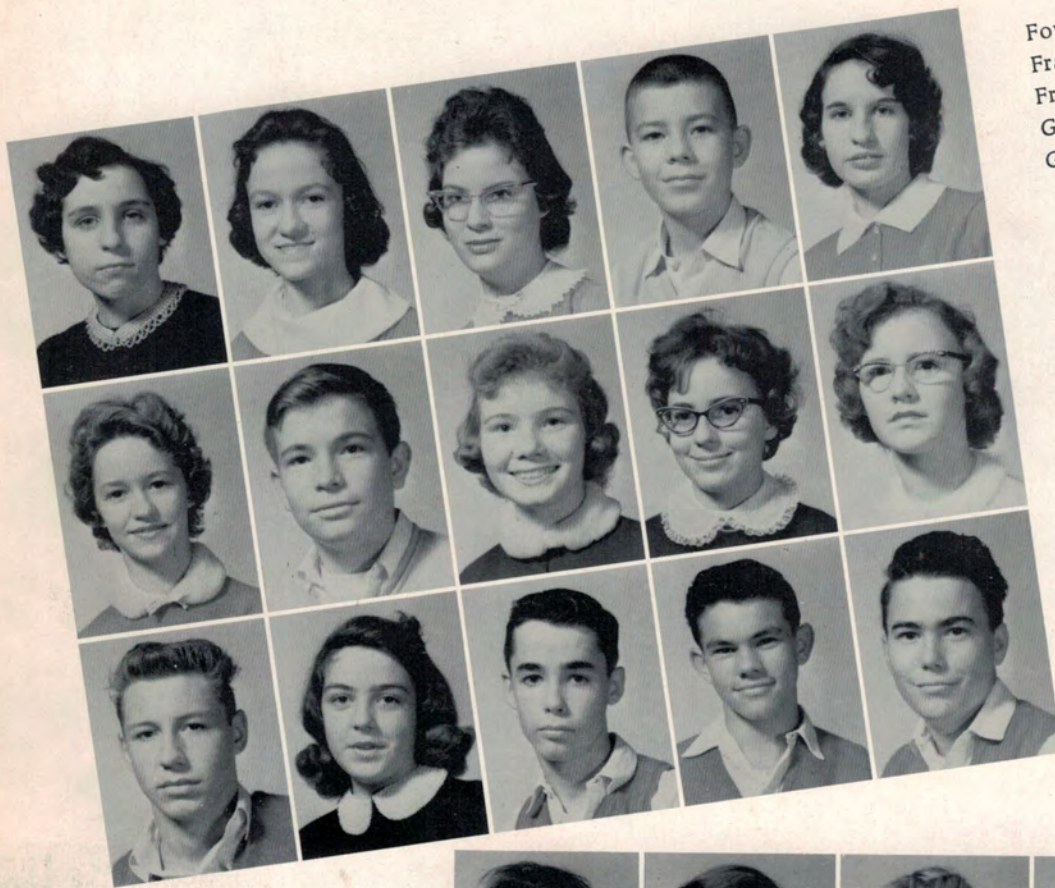
Deselle, Vivian  
Deshotel, Rosa  
Dickerson, Kenneth  
Ducote, Harold  
Ducote, Betty



Ducote, Joanne  
Ducote, June  
Dugas, W. J.  
Firmin, Madison  
Firmin, Carl







Fowler, Mary C.  
 Frank, Karen  
 Franks, Irmalee  
 Gauthier, Fréd  
 Gauthier, Mary

Goodell, Sandra  
 Griffin, Charles  
 Griffin, Gree  
 Guillot, Mary  
 Guillett, Margaret

Gullet, David  
 Himel, Myrtle  
 Hogan, John  
 Jeansson, Harold  
 Johnson, Danny

Johnson, Patricia  
 Jusselin, Willie  
 Kelly, Geraldine  
 Kent, Mike  
 Knoll, James

Laborde, Charles  
 Lachney, Maretta  
 Lipoma, Anthony  
 Luke, John  
 Maxwell, Lila

Meeker, Laura  
 Milligan, Donna  
 Mixon, James  
 Murphy, Dores  
 Pace, Wayne

Polard, Micheal  
 Ponthier, Alice  
 Ponthier, Barbara  
 Pope, Myrtle  
 Rabalais, Claire





ra  
es  
y  
Margaret  
wid  
yrtle  
nn  
, Harold  
Danny



Rabalais, Gala  
Rachal, Mick  
Richie, Harold  
Rox, Martha  
Sawyer, Enid

Slocum, Charles  
Smith, Gervy  
Socia, Charles  
St. Romain, Barbara  
Swann, Jana

Tanner, Lyle  
Townsend, Albert  
Townsend, Carlton  
Townsend, David  
Tubre, Tommie



Vidrene, Roderick  
Webb, Harvey  
Wedaman, Julia  
Wilmoth, Linda  
Wolff, Willis



Wright, Lynn



"Just like Freshman girls!"



# ORGANIZATIONS

*All the world's a stage  
And all the men and women merely  
players:  
They have their exits and their  
entrances;  
And one man in his time plays  
many parts, . . .*

SHAKESPEARE



# Bunavola Staff

Editor - DIANE KNOLL



Business Manager - BOBBY CHATELAIN





# Staff



Advisor - MR. RAYMOND SABATIN

Assistant Editor  
CHRISTIE BLALOCK

Assistant Business Managers  
LINDA SAWYER  
DOROTHY YOUNG

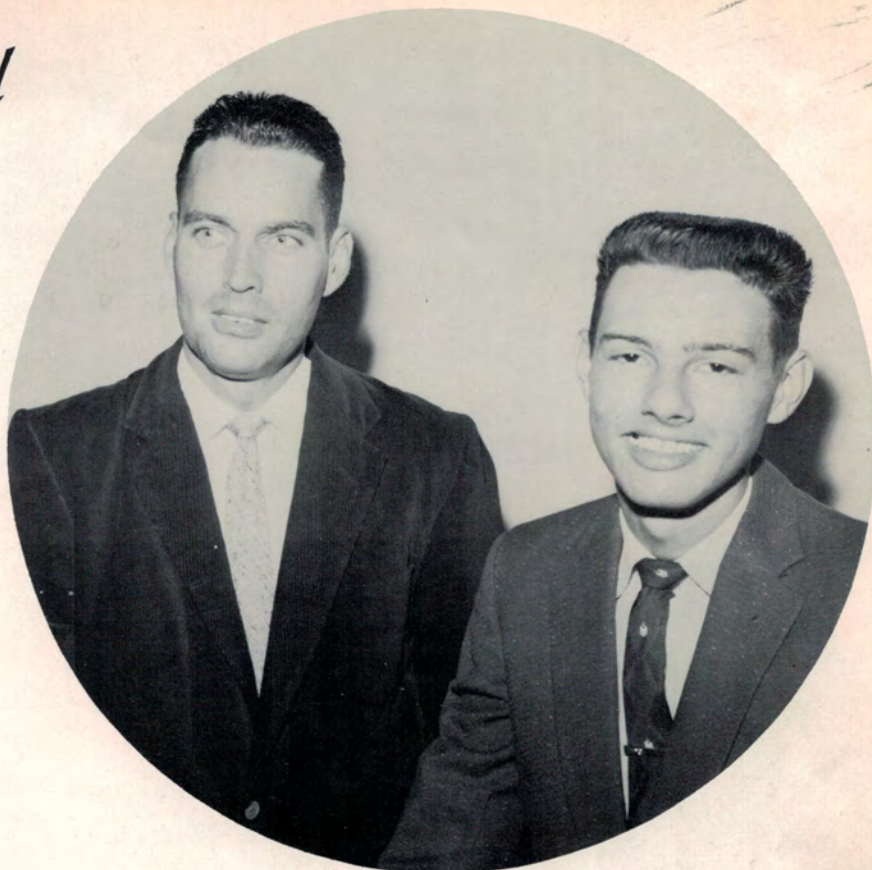




# Student Council

President  
ROBERT VINCENT

Advisor  
W. A. BRISTER, JR.



SABATINI



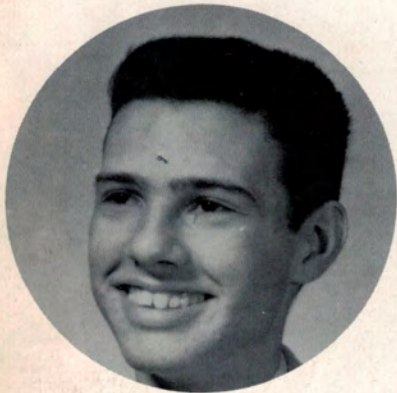
President, Robert Vincent; Vice President, Diane Knoll; Secretary, Mary Stagg; Treasurer, Girard Jusselin; Sergeants-at-Arms, Cecil Singleton and Oliver Lapraire; Parliamentarian, Mike Rabalais; and Representatives, Johnny Simpson, Tony Gauthier, Mike Clark, and Jimmy Knoll. Principal, C. L. Couvillion; and Advisor, W. A. Brister.



# The Trumpet



Editor  
JANEL BLALOCK



Assistant Editor - ROBERT VINCENT



Advisor - MRS. FISHER



## STAFF

SEATED, are officers: Robert Vincent, Janel Blalock, Girard Jusselin, and Diane Zimmerman.  
STANDING, are: Sarah Biles, CeCe Quirk, Peter Parrino, Kay Whisman, Eloise Overby, John Cerami,  
J. K. Pollard, Johnny Simpson, Mrs. Fisher, Oliver LaPrairie, Billy Mixon, Jim Baker, Sandra Sehon,  
Enid Sawyer, Janet Newman, Lynn Wright and Carol Williams.





OFFICERS

President  
GIRARD JUSSELIN

Vice President  
ANTHONY ARMAND

Treasurer  
BOB CULLEN

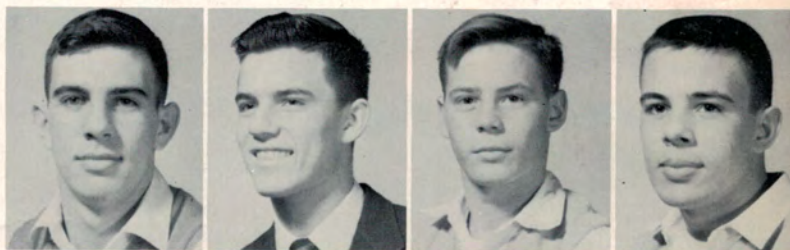
Secretary  
BILL MIXON

Coach  
W. A. BRISTER

Assistant Coaches  
HAMILTON  
FOREMON

*"B" Club*

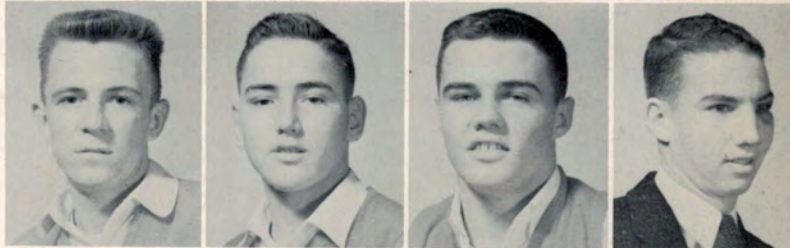
Armond, Anthony  
Chatelain, Bobby  
Clark, Mike  
Cullen, Bobby



Brocato, Kenny  
Dupont, Donald  
Bundrick, George  
Earnest, Charles



Gauthier, Tony  
Jusselin, Edward  
LaPrairie, Oliver  
Ladnier, Buddy



Mixon, Billy  
Parrino, Peter  
Plaisance, Louis  
Webb, Kenneth



Jusselin, Girard



SHER



rami,  
non,



# F. H. A.



## F. H. A. OFFICERS

STANDING: Dorothy Young, Cecil Singleton, Linda Sawyer, Advisor, Mrs. B. G. St. Romain; Pat Bundrick, and Enid Sawyer. SEATED: Dianne Zimmerman, CeCe Quirk, President, Ruth Cottano; Nadine Mayeaux, and Katherine Richie.







Seniors studying Family Relations.



Juniors studying Home Nursing.



Chapter Bear, Dukes, and Baby.



Sophomores preparing for a banquet.



Freshmen making first garments.

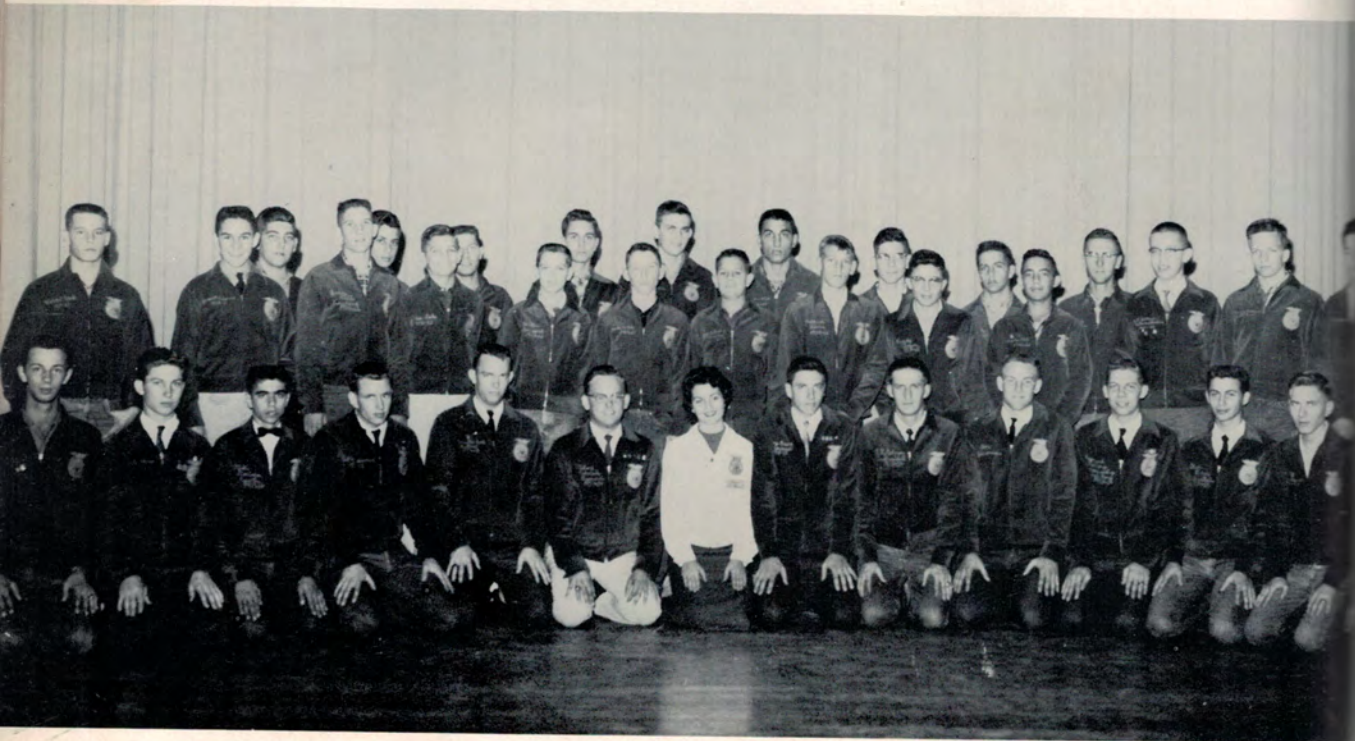


# F. F. A.



OFFICERS and SWEETHEART

STANDING, from left to right: Wayne Reynolds, Ken Webb, CeCe Quirk, Pat St. Amant, Dayton Guillot, and Ted Carter. SEATED, from left to right: Phillip Stagg, Nickie Glorioso, Mike Rabalais, President, Leroy Quirk; A. G. Redmon, Girard Jusselin, Raymond Guillory, and Steve Pearce.



F. F. A. members and Sweetheart proudly displaying their jackets!





Guil-  
Pres-



F. F. A. AT MONTHLY MEETING!







FRONT ROW, left to right: Sarah Biles, J. Baker, M. Rabalais, B. Mixon, C. Bryan, M. Kojis, L. Buie, N. Guillot. SECOND ROW: M. Stagg, P. Kelley, M. Chapman, M. Rox, P. Johnson, D. Knoll, M. Aymond. THIRD ROW: M. McConnell, E. Overby, G. Kelley, B. Ponthier, K. Hynson, J. Mixon, R. Keller. FOURTH ROW: L. Sawyer, D. Dupont, M. Courville, R. Earles, D. Bordelon, M. Johns, W. Constant. FIFTH ROW: M. Biles, M. Wedaman, C. Williams, K. Webb, B. Ladnier, C. Griffin. SIXTH ROW: Advisors, Mr. Melvin Sharpe and Mr. Marcus Bordelon.



# Future Business Leaders of America

F. B. L. A. OFFICERS - SEATED: Nathalie Guillot, Secretary; Sarah Biles, First Vice President; Bobby Chatelain, President; Madonna Kojis, Second Vice President; Linda Buie, Treasurer. BACK ROW: M. Sharpe, Advisor; Billy Mixon, Ronnie Keller, James Mixon, Jim Baker, Reporter, Mike Rabalais, Parliamentarian, Carolyn Bryan; M. Bordelon.



. Buie,  
M.  
n, R.  
W.

## FIRST YEAR AT BHS

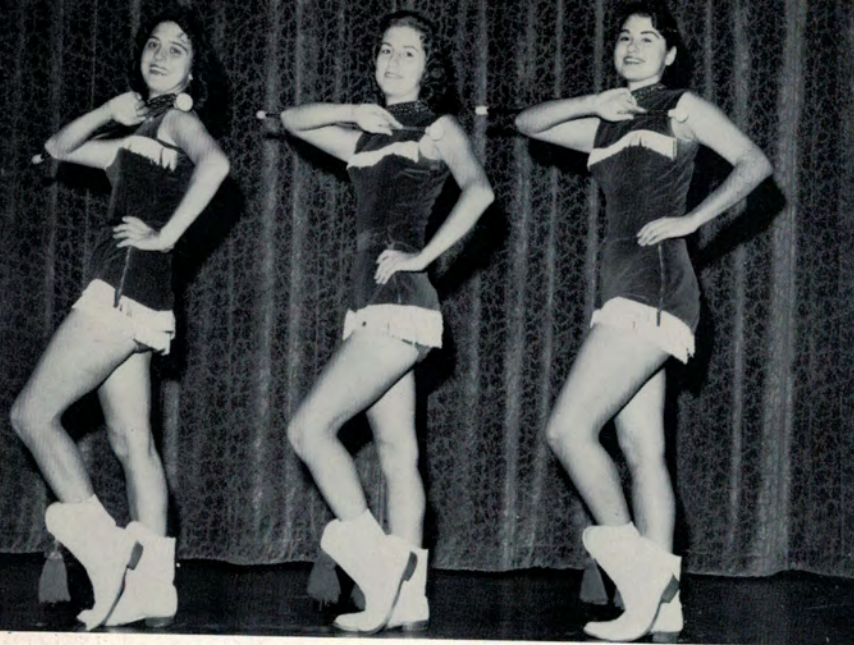
With the cooperation of Mr. Melvin Sharpe, and a fine group of Officers, our first President was able to organize an F. B. L. A. Organization at BHS. We all hope that the F. B. L. A. will grow into a fine Club at BHS.

MELVIN  
SHARPE  
Advisor

BOBBY  
CHATELAIN  
President







DOROTHY YOUNG

BARBARA PALERMO

GWENDOLYN BARNES

Head Majorette - SARAH BILES



CLAIRE RABALAIS

CHARLOTTE CLARK

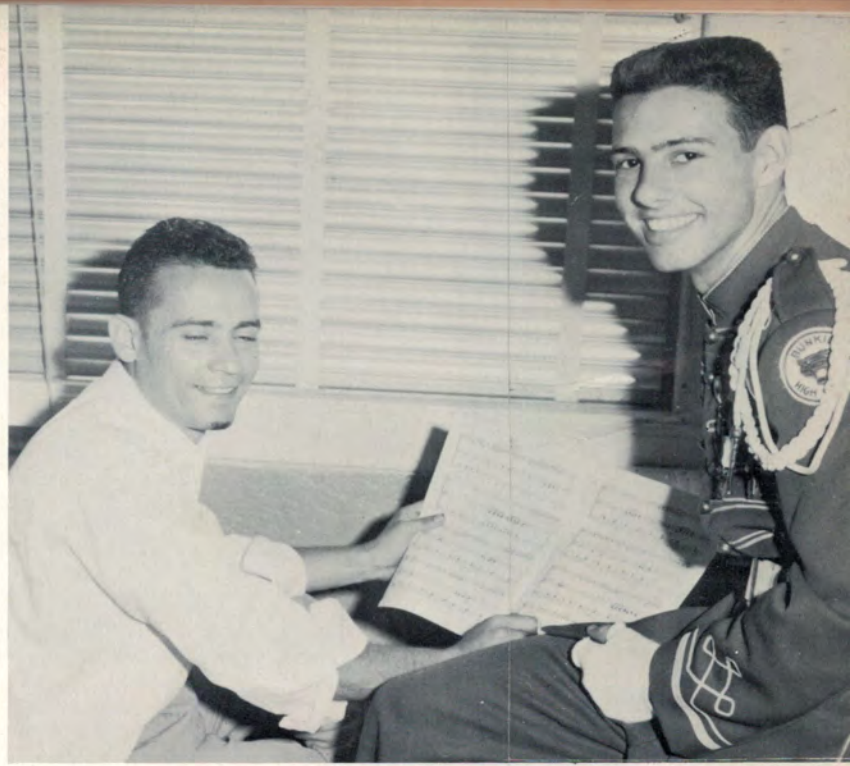
BARBARA ST. ROMAN





Band President - ROBERT VINCENT

Director - MR. MOTT PALMER



## *Marching Band*

A ST. ROMAN







President  
ROBERT VINCENT

First Officer  
JOHNNY SIMPSON

Second Officer  
WALLACE CULLEN

Third Officer  
MARY STAGG

OFFICERS

## *Concert Band*





fficer  
TAGG



MARIE BURLEIGH

JUDY DAVIS

Head Cheerleader - TEEDIE GUILLOT



BETTY FRANKS      CILE BUBENZER





# Boosters



FIRST ROW, left to right: Linda Sawyer, Mary Aymond, Janet Newman, Christie Blalock, Carol Franks, Janel Blalock, Rhoada Buckley, Cecil Singleton, Gree Griffin, Diane Knoll, Pat Bundrick, Mrs. Gwen, Sponsor; Myrtle Lafleur, Willy Jusselin, Kitty Rabalais, Eloise Overby, Joan Escude, Grace Blalock, Rachel Earles, Jana Swann, Barbara Ponthier, and Lila Maxwell. SECOND ROW: Marilyn Ducote, Rosemary Ford, Judy Harris, Diane Dupont, Karen Frank, Katherine Dice, Catherine Billeaud, Judy Turner, Myrtle Pope, Carol Bryan, Donna Lafleur, Sue Langley, Menerva Michot, Sandra Goodell, Gertrude Kelley, Romona Dupree, Linda Gauthier, Patricia Johnson, Barbara Mayeaux, Kathy Hynson, Theresa Boone, and Joanne Ducote.





OFFICERS

Left to right: As. Squad Captain, Willy Jusselin; Squad Captain, Eloise Overby; Vice President, Christie Blalock; President, Diane Knoll; Secretary, Teedie Guillot; Squad Captain, Grace Blalock; and As. Squad Captain, Janel Blalock. Sponsor, Mrs. Gwen.



Former Queen, Dot, crowns new 1958  
Queen, JANEL BLALOCK.



Everyone seems to be having a grand  
time at the 1958 "Red and White"  
formal.

Franks,  
Gwen,  
Black,  
E, Rose-  
Turner,  
Lude  
Ceresa



Miss Mr. and Mrs. Couvillion liked  
the band - "Rob and the Rythm Aces."



1958 Booster Queen and Maids



# *French Club*



# *Junior Deputy*





# ATHLETICS

*O! It is excellent  
To have a giant's strength;  
but it is tyrannous  
To use it like a giant.*

SHAKESPEARE





5.  
MAMOÛ 39-0

On Homecoming night, the Panthers couldn't be stopped once they got rolling. This was their first win in District play.

6.  
OBERLIN 13-12

Again Bunkie overcame a much larger team, stopping Oberlin's extra points to win by a margin.

4.  
VILLE PLATTE 6-26

The Panthers went down in defeat on their home field, losing to a much aroused Ville Platte squad.

3.  
DEQUINCY 6-21  
Panthers could not move the ball and the powerful Tigers stole the spotlight in Bunkie's first defeat.



2.  
BREAUX BRIDGE 19-12

Bunkie fought off a heavier offense and ran through a bigger defense, scoring 3 TD's to the Tigers' two.

1.  
MENARD 20-0

The Panthers got off to a good start by holding the Eagles scoreless.

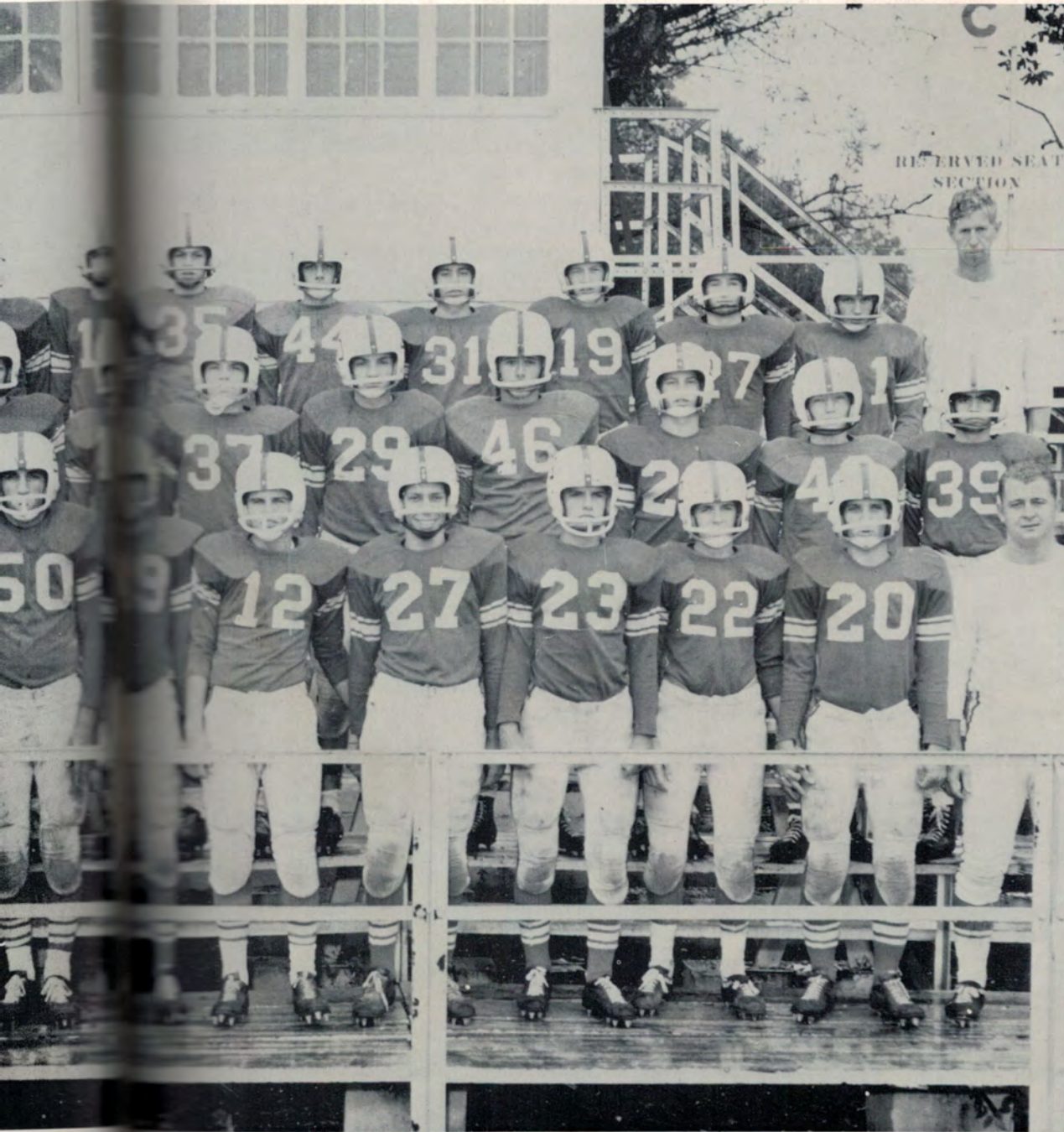


7.  
OAKDALE 12-7

Bunkie upset the Warriors' Homecoming by handing them a defeat for the second time in a decade.

8.  
COTTONPORT 54-13

Bunkie's passing couldn't be stopped, and they let loose and ran all over the Cottonport Wildcats.



9.  
CHURCHPOINT 31-7  
On a muddy field the Panthers scored a victory as they made 5 TD's to the Bears' one.

10.  
MARKSVILLE 41-0  
By defeating their arch-rivals, Panthers captured several titles: Parish Champs, District Champs and were able to keep the "cat-skin."

12.  
TALLULAH 6-22

The Panthers encountered the defending State Champions, the Trojans, on Thanksgiving Day in Bunkie. The Panthers held the Trojans to one TD in the first half, but were worn down as the second half progressed. Bunkie scored its only touchdown in the fourth quarter. This was the Semi-Final game of the Class "A" Champs.

11.  
DEQUINCY 13-13

Bunkie entered the State-Playoffs by meeting the DeQuincy Tigers in DeQuincy. It was a hard fought game, and Bunkie was declared the winner because of their 13 first downs to DeQuincy's 9. The Panthers were crowned Southwest District Champs.





**GIRARD JUSSELIN, Fullback**  
Most Valuable Player, All-District, All-Star Southwest District, All-State Selection, Captain.



**BOBBY CHATELAIN, End**  
First Team All-District End, All-Star Southwest District Team.



**ANTHONY ARMAND, Quarterback**  
All-District, All-State Selection, All-Star Southwest District, Captain.



**KEN WEBB, Guard**  
All-District, All-State Selection, All-Star Southwest District.



**BOB CULLEN, Guard**  
All-District, All-Star Southwest District.



**BILLY MIXON, Halfback**  
All-District.





KENNY BROCATO, End  
All-District.



PETER PARRINO, Halfback  
All-District.



TONY GAUTHIER, End  
All-District.



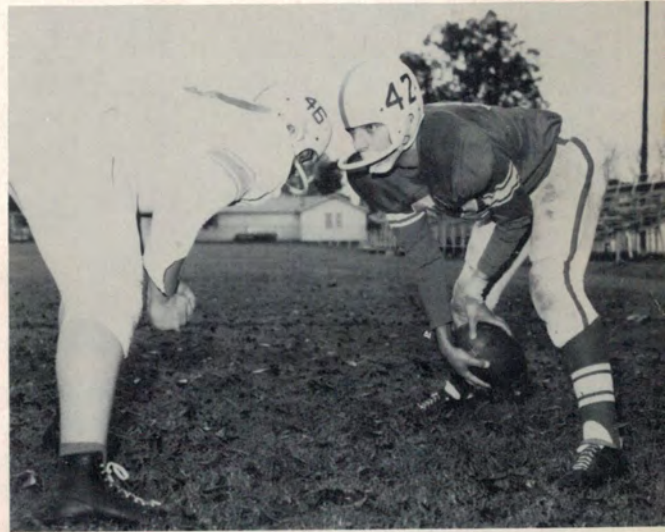
DONALD DUPONT, Tackle  
All-District.



GEORGE BUNDRICK, Tackle  
All-District, All-Star Southwest District.



OLIVER LAPRAIRIE, Halfback



LOUIS PLAISANCE, Center  
All-District.



SCHEDULE

Marksville	December	4
Morrow Tourney	December	6
Ville Platte	December	11
Cottonport	January	6
Marksville	January	13
Lafargue Tourney	January	16
Marksville	January	30
Mansura	February	3
Mansura	February	12
Marksville	February	13
District Tourney	February	20
Parish Tourney	February	27

## *Girls' Basketball*



KNEELING: Captains, Mary Stagg and Grace Blalock; Coach, Pat Gwen; and Managers, Linda Buie, Diane Zimmerman, and Katherine Richie. STANDING: Lynn Wright, Faye Armand, Donna Lafleur, Julia Wedamon, Mary Aymond, Pat Bundrick, Christie Blalock, Diane Knoll, Elsie Gremillion, Sandra Schon, Marilyn Ducote, Martha Trump, and Cile Bubenzer.





Forward - MARY STAGG  
Captain



Guard - GRACE BLALOCK  
Co-Captain



DIANE KNOLL  
Forward



SANDRA SEHON  
Guard



MARY GAIL AYMOND  
Forward



MARILYN DUCOTE  
Guard

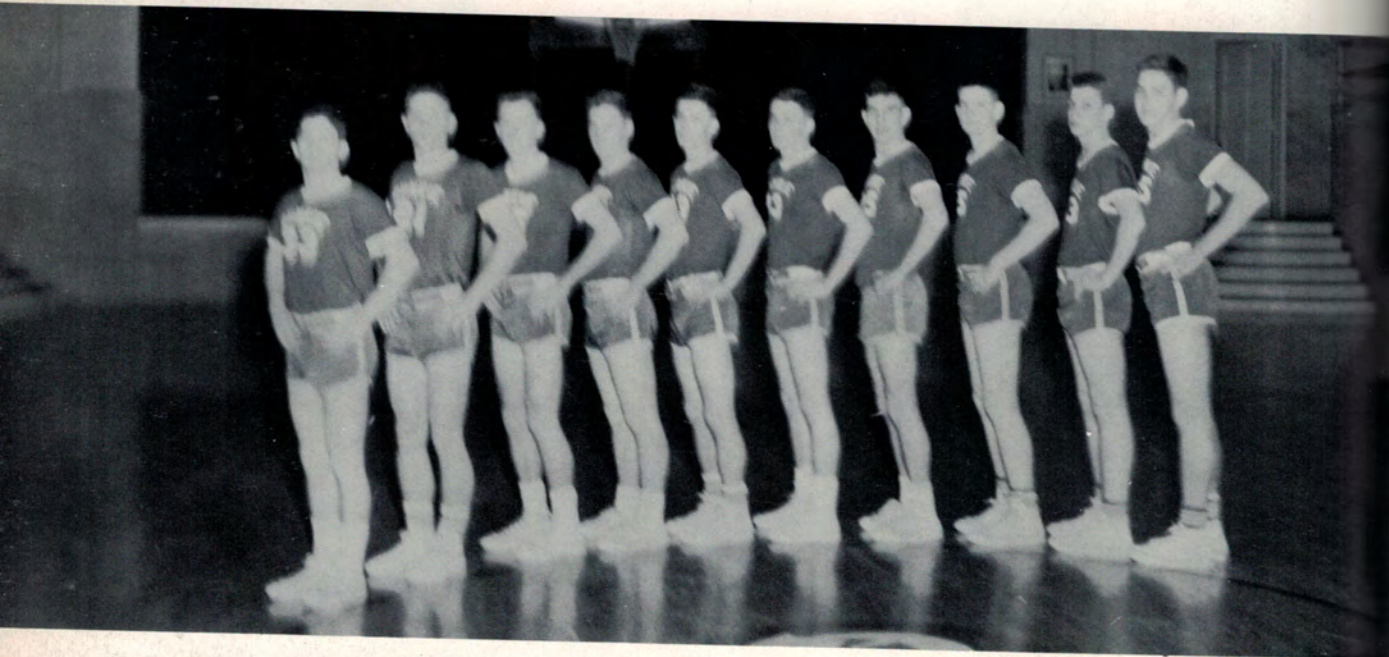




## SCHEDULE

Ville Platte	December	11
Cheneyville	December	17
Cottonport	December	30
Cottonport	January	6
Marksville	January	13
Lafargue Tourney	January	16
Marksville	January	30
Mansura	February	3
Mansura	February	12
Marksville	February	13
Marksville	February	17
District Tourney	February	20
Parish Tourney	February	27

## *Boys' Basketball*



Left to right: Peter Parrino, Billy Mixon, Tony Gauthier, Charles Earnest, Bobby Chatelain, Oliver LaPrairie, Anthony Armand, Brother Knoll, Richard Overby, Edward Jusselin.







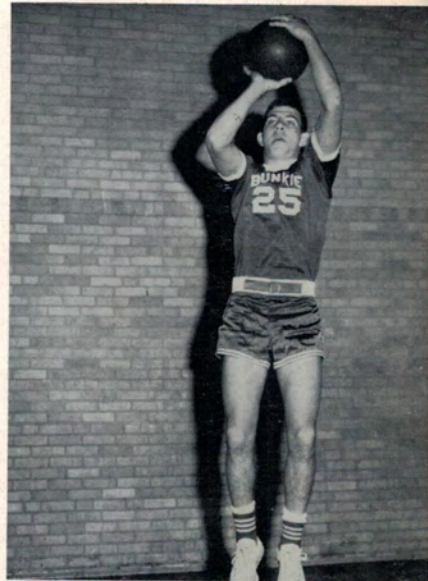
Guard - GIRARD JUSSÉLIN



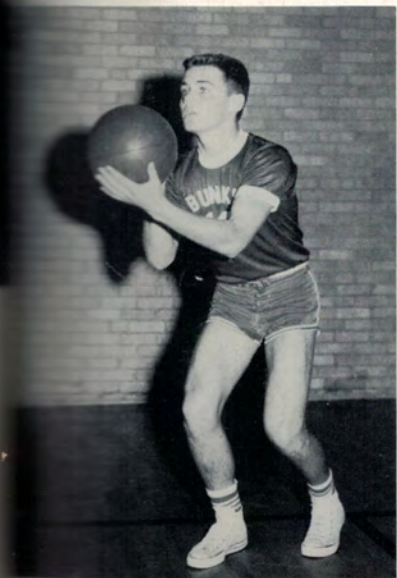
Forward - RICHARD OVERBY



Guard - BOBBY CHATELAIN



Forward - ANTHONY ARMAND



Guard - OLIVER LAPRAIRIE

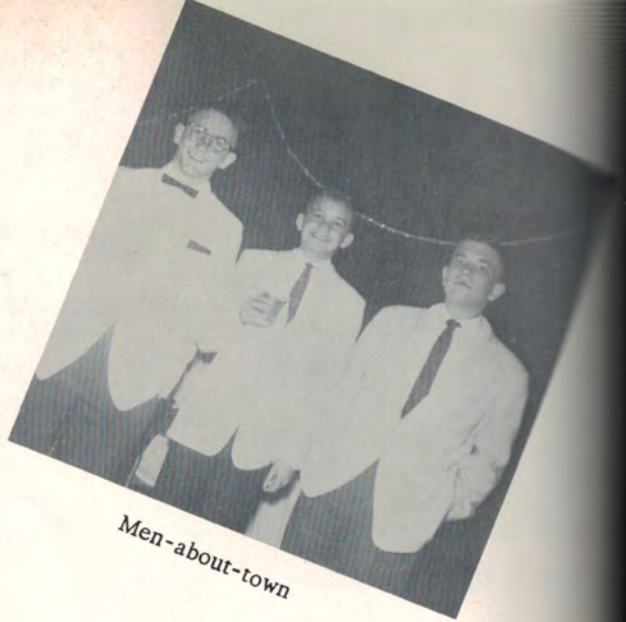


Center - EDWARD JUSSÉLIN





Could that be Cannon?



Men-about-town



Were you at the Summer Sodality Skating Party?



Anyone need help?



Future All-Stars



# FAVORITES

*Holy, fair, and wise is she;*

*The heaven such grace did lend her,  
That she might admired be.*

*Is she kind as she is fair?*

*For beauty lives with kindness.*

SHAKESPEARE



*Presenting Mr. and Miss B.H.S.  
and  
Favorites*

The 1959 Bunavola proudly announces Mr. and Miss B. H. S. and Favorites. These boys and girls were selected by popular vote of the student body based on personality, character, and leadership. Our 1959 Miss Bunkie High is MISS DIANE KNOLL. To mention only a few of her accomplishments: Miss Knoll is Vice President of the Student Council, Booster President, Homecoming Court, and Winter Carnival Maid. Our Mr. Bunkie High is MR. GIRARD JUSSELIN. Mr. Jusselin, besides being our own athletic hero, has served as senior class officer, F. F. A. officer, and Winter Carnival Court.

Favorites Include:

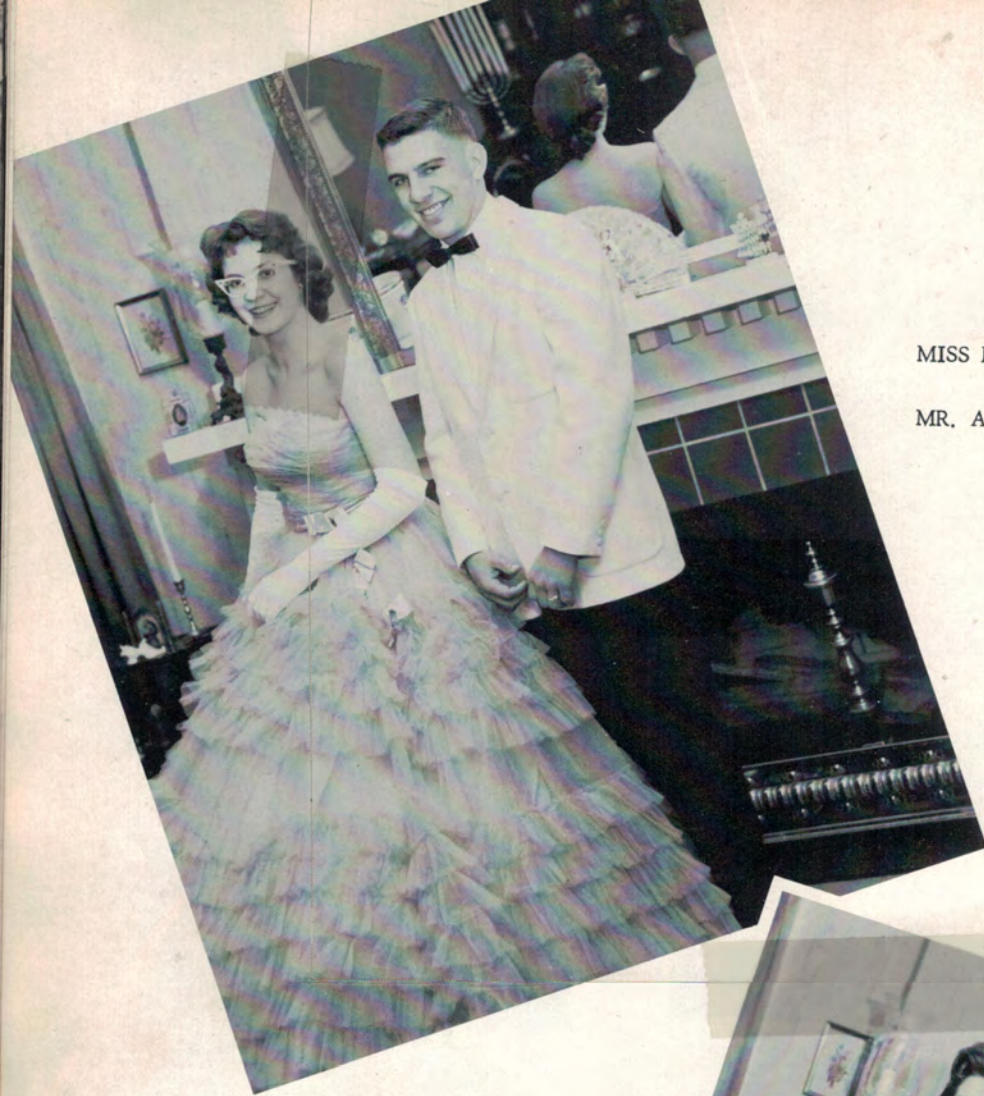
Miss Katherine Richie  
Miss Cecelia Quirk  
Miss Judy Davis  
Miss Teedie Guillot  
Miss Cile Bubenzer  
Miss Sarah Biles  
Miss Opal Roberts  
Miss Mary Stagg

Mr. Anthony Armand  
Mr. Bobby Chatelain  
Mr. Charles Earnest  
Mr. Buddy Ladnier  
Mr. Oliver LaPrairie  
Mr. Billy Mixon  
Mr. Peter Parrino  
Mr. Robert Vincent









Favorites

MISS KATHERINE RICHIE  
and  
MR. ANTHONY ARMAND



Favorites

MISS CECILIA QUIRK  
and  
MR. BOBBY CHATELAIN



Favorites

MISS JUDY DAVIS  
and  
MR. CHARLES EARNEST



Favorites

MISS TEEDIE GUILLOT  
and  
MR. BUDDY LADNIER







Favorites

MISS CILE BUBENZER  
and  
MR. OLIVER LAPRAIRIE



Favorites

MISS SARAH BILES  
and  
MR. BILLY MIXON



Favorites

MISS OPAL ROBERTS  
and  
MR. PETER PARRINO



Favorites

MISS MARY STAGG  
and  
MR. ROBERT VINCENT





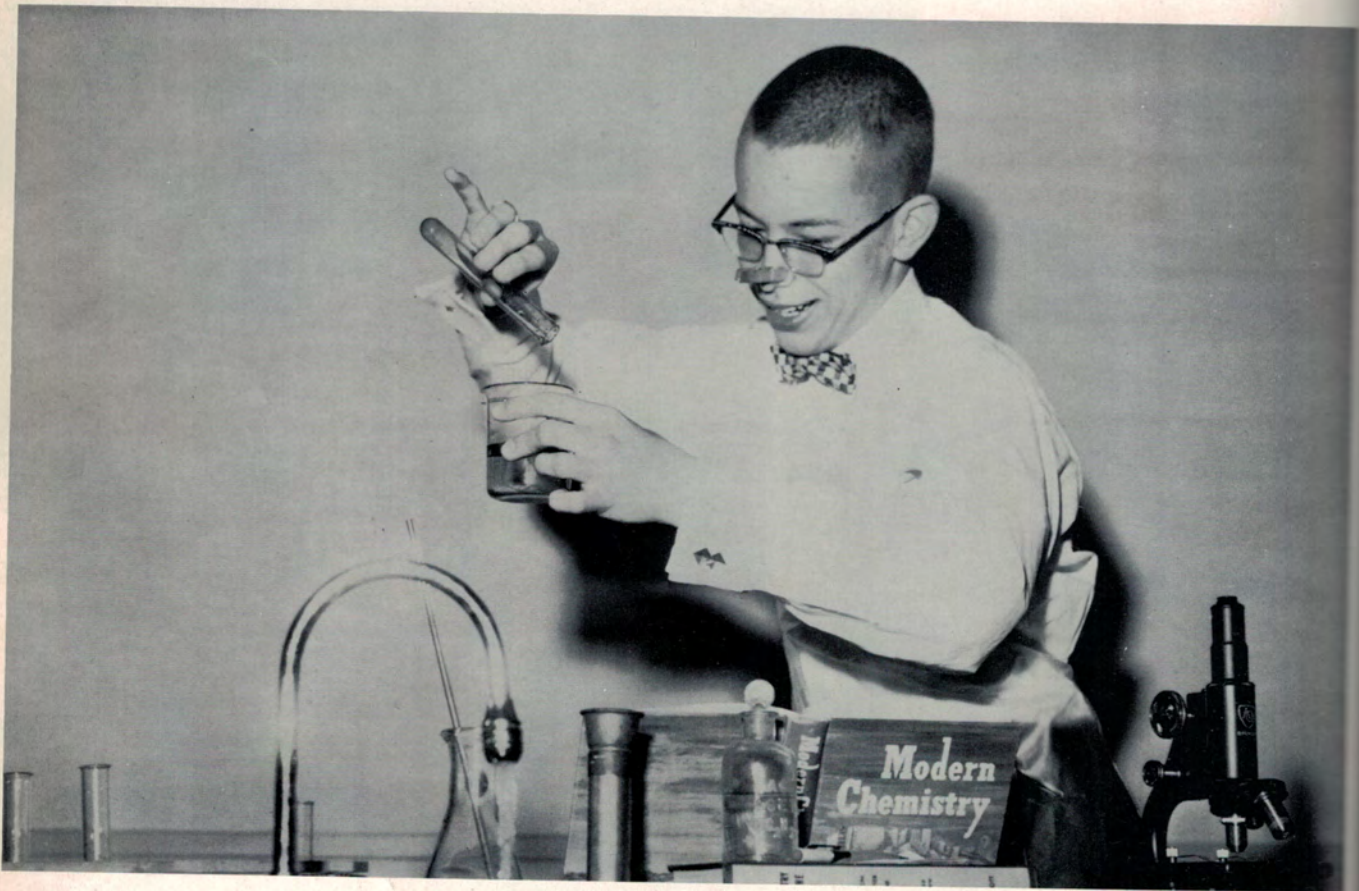
# Picked at Random



The clock-watcher.



No wonder he couldn't find his pants.



Mr. St. Romain's pet genius.



# ACTIVITIES



his

*Heigh-ho! sing heigh-ho! unto  
the green holly;*

*Most friendship is feigning, most  
loving mere folly:*

*Then, heigh-ho, the holly!*

*This life is most jolly!*

SHAKESPEARE



JANEL BLALOCK  
Booster Queen



SALETA COMEAUX  
Avoyelles Cattlemen's  
Queen



JUDY DAVIS  
Miss Bunkie Queen



ROSA MARY FORD  
F.F.A. Sweetheart



NADINE MAYEAUX  
Band Queen



CECELIA QUIRK  
Homecoming Queen  
Winter Carnival Queen





## *Winter Carnival Court*



Queen - CECELIA QUIRK  
King - MICHAEL RABALAIS



The Court's Table

JANEL I

JUDY I





JANEL BLALOCK



DIANE KNOLL



LENA MILLIGAN



OPAL ROBERTS



MARY STAGG



JUDY DAVIS



ROSE MARY FORD



JUDY HARRIS



KATHY HYNSON



KATHERINE RICHIE

## *Miss Bunkie*



Miss Bunkie - JUDY DAVIS  
Maids: JANEL BLALOCK and DIANE KNOLL



# Homecoming Court



DIANE KNOLL  
escorted by  
BOBBY CHATELAIN



TEEDIE GUILLOT  
escorted by  
ROBERT REITZELL



CECELIA QUIRK  
escorted by  
KENNETH WEBB



JUDY DAVIS  
escorted by  
BUDDY LADNIER



CILE BUBENZER  
escorted by  
BILLY MIXON



# Freshman Night



Freshman night was held at the first football game.



Say, the upper classmen aren't that bad.



The Freshmen entertained at half-time.



"Glow little glow-worm, glimmer"



# Spring



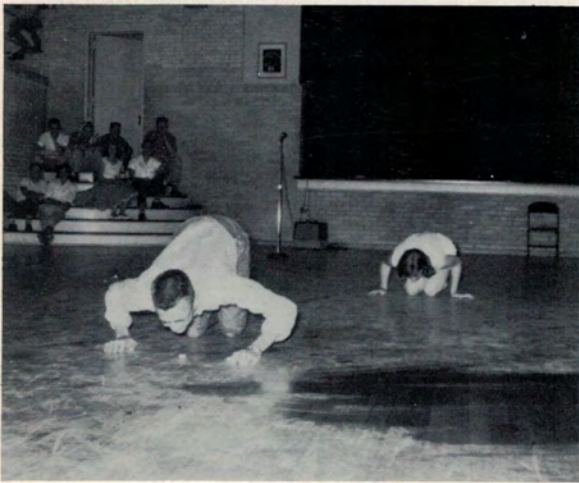
THE FRESHMAN TURNED OUT FOR THE RED AND WHITE GAME.



DANCE AFTER THE RED AND WHITE GAME.



THE NEW DRIVER'S ED. CAR HAS ARRIVED.



THE S. C. PLANS THE SILLIEST GAMES. RIGHT, TONY?



THE WESTERN TICKET.



# Summer



Pelican State Delegates



Safety Conference Delegates



Band and Boosters at summer practice



Annual Fishville Frolics



Splish-splash!



# Fall



SENIORS MODELING "SACK" DRESSES.



REMEMBER THOSE GOOD OLD,  
GRAMMAR SCHOOL DAYS?



HELLO, EVERYONE.



MY GOODNESS, M. C. ! YOU SURE  
WERE A CUTE DOG.



TAKEN DURING THE FALL OF '55.  
COULD THESE BE OUR SENIORS?



BAND M  
THE "C



# Winter



STUDENT COUNCIL FLOAT IN THE CHRISTMAS PARADE.



BROTHER, THOSE FOOTBALL TRIPS!



THE CHEERLEADERS DID A SWELL JOB THIS YEAR.



BAND MEMBERS WERE PROUD TO DISPLAY THE "CATSKIN" AFTER THE MARKSVILLE GAME.



THE BOOSTERS ATTENDED EVERY GAME THIS YEAR.



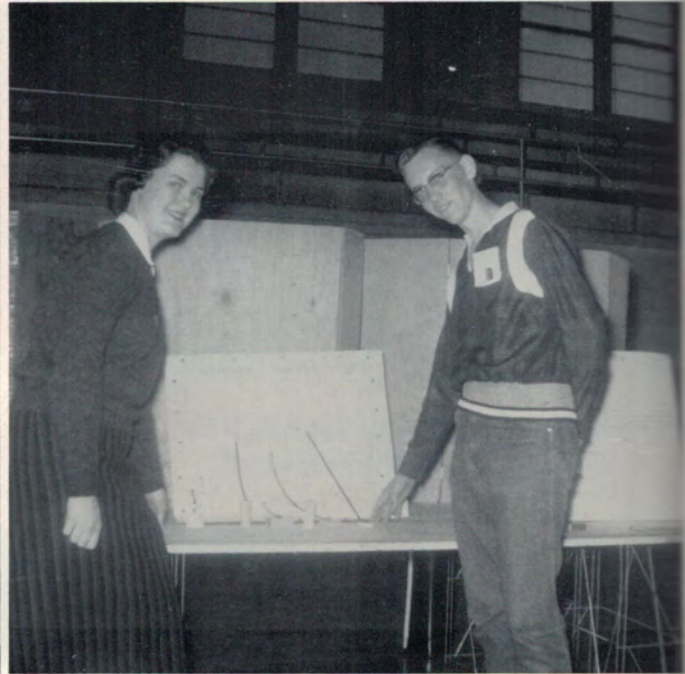


# Science Fair

1958



J. K. Pollard captures top honors in electronics.



Linda Rider and Jim Baker place first in math.



Diane, Peter, Francis took top honors in the Biology division.



Wardell, Nellie, Rachel, Emma, and Edith seem interested in this project.







a seem

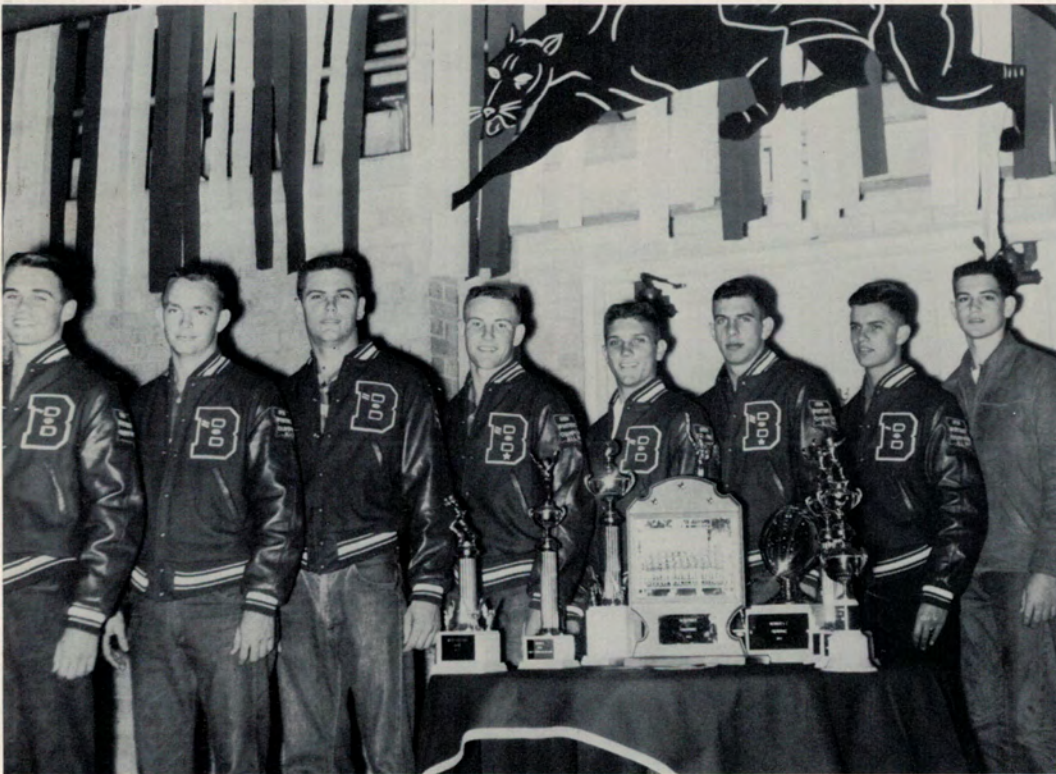


Congratulations

and

Best Wishes

FATHER LYONS



1958 Football players who received trophies for outstanding work. Left to right: Oliver LaPrairie, Kenneth Webb, Donald Dupont, Girard Jusselin, Billy Mixon, Anthony Armand, Bobby Chatelain, and James Knoll.









And you say that you don't see these . . . er . . . students . . . around the campus? Ridiculous! They're merely normal, happy, and carefree young journalists rejoicing at the completion of another yearbook . . . your 1959 BUNAVOLA. You have a complaint to make? Due to circumstances beyond control, please address all complaints to Ye Olde Nut House, Pineville, La. Deceased members may be found under tombstones with epitaphs saying, "WE HATE YEARBOOKS!"



# ADVERTISERS

*This above all — to thine own self be true,  
And it must follow, as the night the day,  
Thou canst not then be false to any man.*

SHAKESPEARE

se...  
Ri-  
appy.  
ng at  
... your  
laint  
nd  
s to  
De-  
tomb-  
TE