

Course Offerings:



MARCHING BAND MU 806/809

LEVEL 2/1 (F/S) GRADES 9-12

½ CREDIT per Semester

The Rocky Hill High School Royal Blues Marching Band is an ensemble constructed of wind instruments, percussion instruments, and color guard. In this course, students will further develop musical/visual performance technique as well as physical well being in a competitive and athletic setting. All members of the ensemble are responsible for memorizing several pieces of band music, stand cheers, and all visual design work for the field show and parades. Two years of study on a band instrument is highly recommended although not required. Any student interested in joining the marching band who has no prior experience performing on a band instrument must arrange for an interview with the director of bands prior to enrollment. The course requires participation in evening and weekend rehearsals and performances. Students must be taking the required number of courses for their grade level in order to enroll. The level of instruction may be upgraded from General Level to Honors Level on an individual basis if a student meets all requirements. Please note: Students must be enrolled in this course prior to July 1st for the upcoming fall semester.

SYMPHONIC BAND MU 802/803

LEVEL 2/1 (F/S) GRADES 9-12

½ CREDIT per Semester

The Symphonic Band is loosely defined as an ensemble consisting of winds and percussion and based on fixed instrumentation. Repertoire for this ensemble generally includes original works for wind band as well as transcriptions of keyboard, vocal, and orchestral music. Students will develop musical literacy through performance on an instrument, and will study basic concepts of music theory and music history. Two years of study on a band instrument is highly recommended although not required. Any student interested in joining the Symphonic Band who has no prior experience performing on a band instrument must arrange for an interview/audition with the director of bands prior to enrollment. This course meets five days a week and the level of instruction may be upgraded from General Level to Honors Level on an individual basis if a student meets all requirements. Students interested in participating in Symphonic Band should also consider signing up for Marching Band.

JAZZ ENSEMBLE MU 850

LEVEL 2/1 (FY) GRADES 10-12

1 CREDIT Full Year Class

The Jazz Ensemble is an advanced instrumental course dealing with the performance and stylistic aspects of American Jazz and other related musical styles. Students will develop musical literacy through performance on an instrument and will study basic concepts of music theory, jazz history, listening analysis, instrumental techniques, and solo/improvisation. The instrumentation of this ensemble is set to the specifications of a traditional big band, which traditionally uses the following instrumentation: alto saxophone, tenor saxophone, baritone saxophone, trumpet, trombone, piano/keyboards, guitar, bass guitar, drum set, auxiliary percussion. Any student interested in this course must audition for the director of bands at the end of the spring semester prior to the year of desired enrollment. This course meets five days a week and the level of instruction may be upgraded from General Level to Honors Level on an individual basis if a student meets all requirements.

CONCERT CHOIR MU 812/813

LEVEL 2/1 (F/S) GRADES 9-12

½ CREDIT per Semester

This course is designed for any student who has an interest in vocal music, both in training and performance. The student is given vocal training and instruction in the reading of unison and part music in both accompanied and a cappella music of various periods and styles. In addition, students will study basic concepts of music theory and music history. Students will participate in all rehearsals and are required to attend all performances of the group. Concert Choir meets five days a week. The level of instruction may be upgraded to Honors if the instructor feels the talent, effort, and leadership of the student merit this increase.

CHORALE MU 820

LEVEL 2/1 (FY) GRADES 10-12

1 CREDIT Full Year Class

Chorale is an intermediate select ensemble for girls. Emphasis is placed on the performance of a cappella and accompanied music covering a variety of genres and styles. In addition, students will study basic concepts of music theory and music history. Students are expected to take part in all performances. Chorale meets five days a week and the level of instruction may be upgraded to Honors if the instructor feels the talent, effort, and leadership of the student merit this increase.

CHAMBER CHOIR MU 826

LEVEL 2/1 (F/Y) GRADES 10-12

1 CREDIT Full Year Class

Chamber Choir is an advanced ensemble whose members are selected by audition in the spring prior to the Fall enrollment. Emphasis is placed on the performance of a cappella vocal music, both secular and sacred, covering a variety of music genres and styles. In addition, students will study basic concepts of music theory and music history. Students are expected to take part in all performances. Chamber Choir meets five days a week. The level of instruction may be upgraded to Honors if the instructor feels the talent, effort, and leadership of the student merit this increase.

Rocky Hill High School

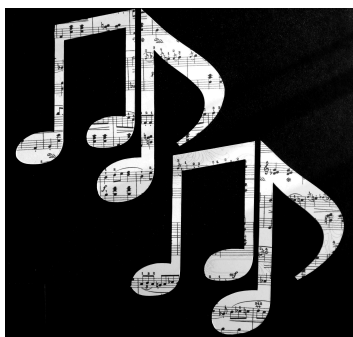
50 Chapin Avenue
Rocky Hill, CT 06067

Phone: 860-258-7721

Website:

www.rockyhillps.com/musicperformingarts

Designed by Amelia Pizzoferrato



Rocky Hill High School

Music Department



For more
Information
contact:

James Shuman
Instrumental
(shumanj@rockyhillps.com)

Keith Traver
Chorus
(traverk@rockyhillps.com)

MUSIC APPRECIATION MU 853/854

LEVEL A/H (F/S) GRADES 9-12

1 CREDIT per Semester

Have you ever wondered why your favorite song makes your toes tap...or wondered how much music is written...or why you enjoy a particular type of music? This class will help you identify the elements of music that speak to you as a listener. We will compare the musical styles of the past with those of the present to see how we arrived at today's current musical tapestry. We will draw from music of baroque, classical and romantic periods to see how they paved the way for jazz, rock, and pop and beyond. A detailed introduction to musical terms and concepts will be provided; no prior musical experience or "musical literacy" in any tradition is required for this course.

ACADEMIC EXPECTATIONS: Communicate Effectively in Writing and Solve Qualitative Problems Effectively

WORLD MUSIC MU 858/859

LEVEL A/H (F/S) GRADES 9-12

1 CREDIT per semester

Every culture has a unique musical tradition of their own. In this class we will explore some of the traditions of several of these cultures through discussion and performance. We will learn about each culture and what makes their music unique, while also learning to play some of their traditional instruments. Students enrolled in this class will learn African Drumming, Caribbean Steel Drums, Brazilian Samba percussion, Taiko, and other instruments found in the cultures that we are studying. A detailed introduction to musical terms and concepts will be provided; no prior musical experience or "musical literacy" in any tradition is required for this course.

ACADEMIC EXPECTATIONS: Communicate Effectively in Writing and Solve Qualitative Problems Effectively

CREDIT OPTIONS

Students enrolled in World Music and Music Appreciation have the option of receiving academic or honors level credit. Those who want to receive honors credit will need to choose either a paper, presentation or project that is agreed upon with the instructor.