



High School Pathways



McLennan
COMMUNITY
COLLEGE



High School Pathways

Dual Credit

High school and college credit

Early Admission

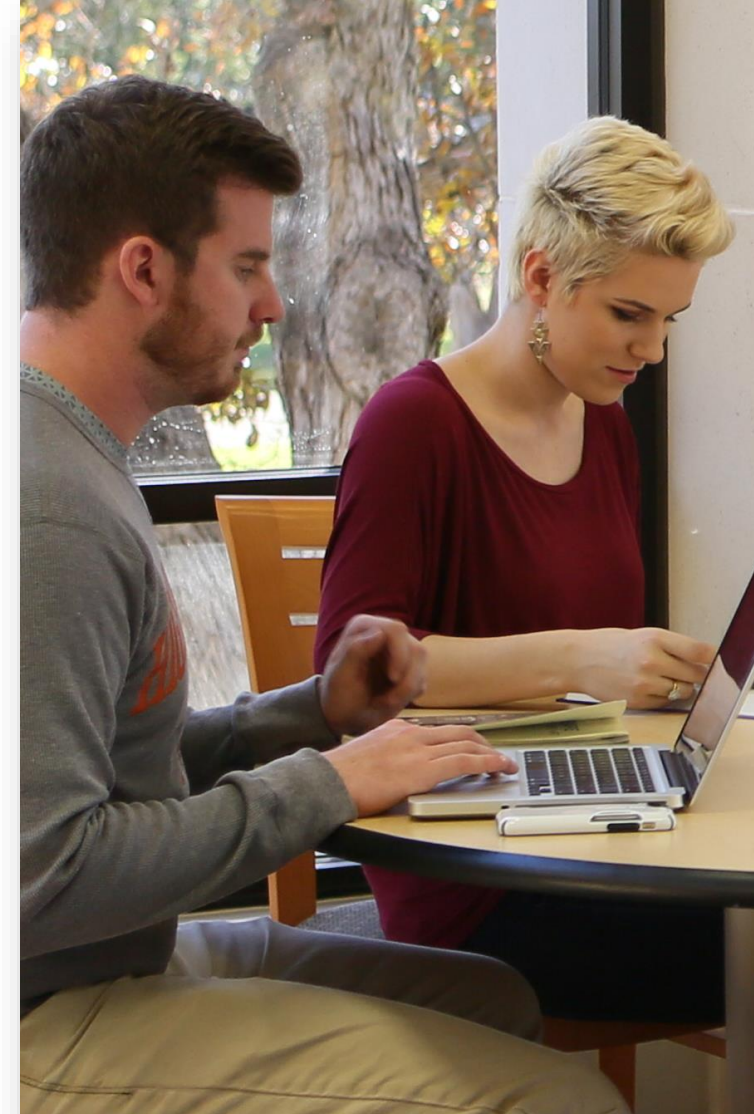
College credit only

Early College High School

Dual credit with special high school designation

Minimum Requirements

Academic Workforce AAS Workforce Level 2 Certificate	Workforce Level 1 Certificate
DC/ECHS: Fall, 9th grade <i>Early admission: grade 11</i>	DC/ECHS: Fall, 9th grade <i>Early admission: grade 11</i>
80+ high school average	75+ high school average
TSIA Reading: Passing score/exemption	Recommended: TSIA reading score of 347+
TSIA Writing and/or Math: Passing score/exemption if required for the course	Meet special requirements of the desired program (if any)
HS Pathways orientation	HS Pathways orientation



College Expectations

- ❑ Textbook/heavy reading required
- ❑ Heavier homework load but fewer grades
- ❑ Absence policy NOT lenient
- ❑ School info NOT given to parents
- ❑ Long-term implications



Financial Aid Implications

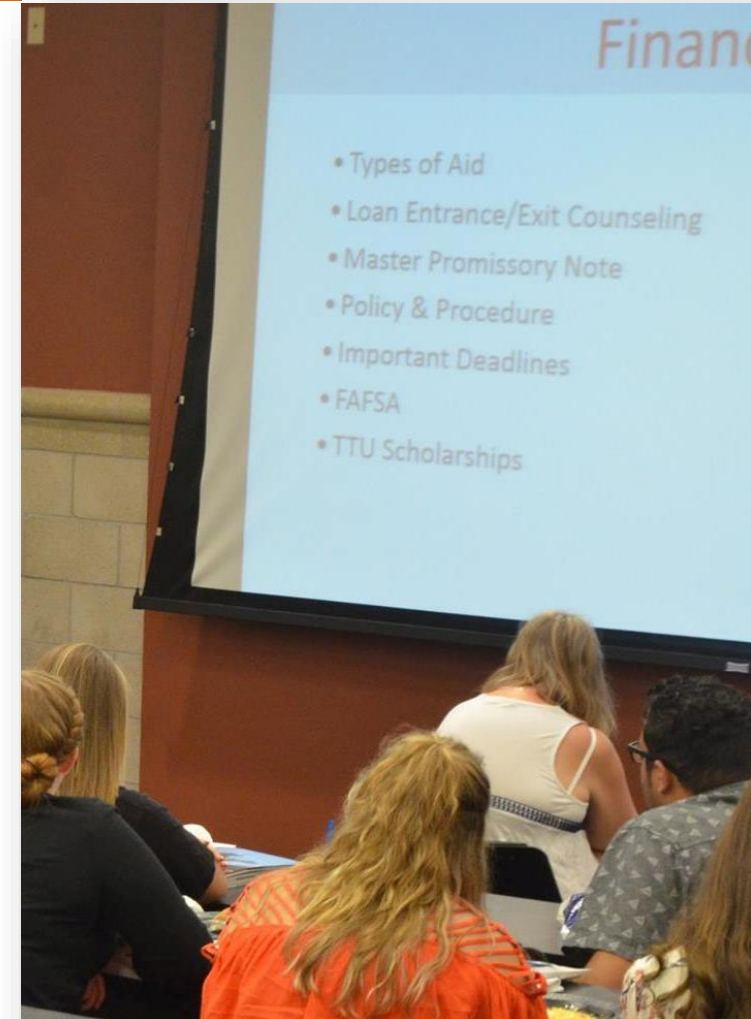
(AFTER high school graduation)

Satisfactory
Progress

- **2.0 GPA**
- **67% completion**

Maximum
Timeframe

- **150% of published program**



Conditions of Enrollment

High School Pathways

After 6 college credit hours:

- ☐ maintain a 2.0 college GPA
- ☐ Below 2.0, blocked from college courses

3+ Withdrawals:

- ☐ blocked from college courses,
minimum 1 year



What does this mean?

- ☐ Research before choosing courses.
- ☐ Select courses in your future degree plan/core.
- ☐ Take all dual credit courses seriously.
- ☐ Do not overload your schedule.
- ☐ Explore the options, including tutoring, before dropping a course.

Verifying courses with another college?

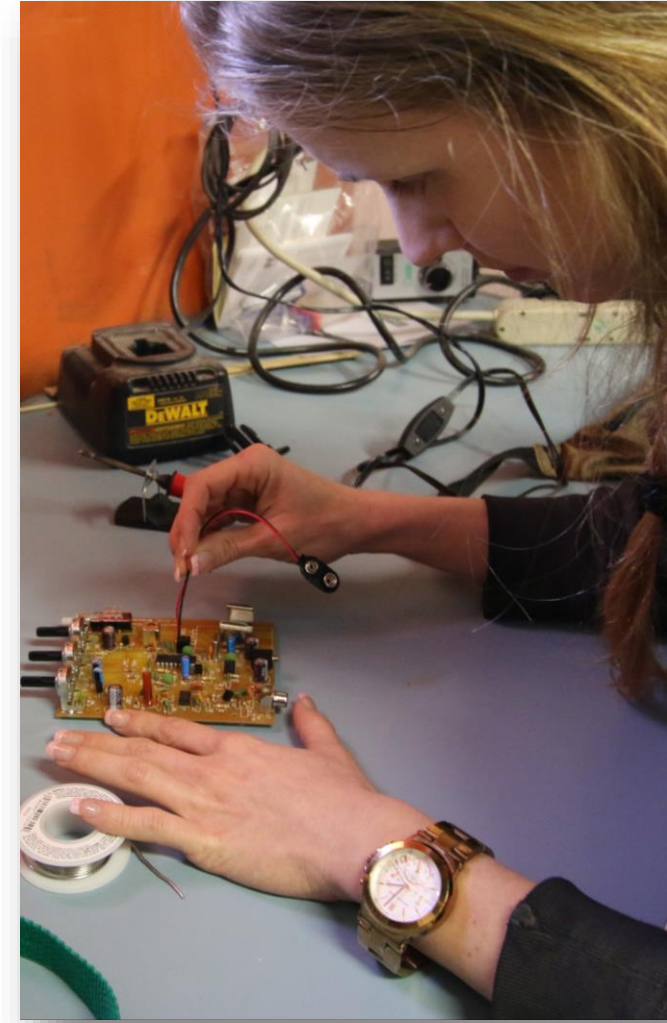
CHECK!

Core Curriculum

Desired Degree Plan

Course Equivalencies

MCC = Texas Common
Course Numbers



Potential Benefits

Your students...

- ☐ gain valuable college experience.
- ☐ may shorten time to a degree.
- ☐ may reduce freshman course load.
- ☐ may lower the cost of a degree.
- ☐ may earn weighted high school grades.

The Goal: A Diploma



Why are we discussing these things?

TO IMPROVE YOUR CHANCE OF
SUCCESS.

Greater knowledge = Better decisions

Estimated Costs, Dual Credit

Tuition/fees: ~~\$345~~ per 3 credit hour course

Example: Fall, HIST 1301	=	\$345	\$210*
Spring, HIST 1302	=	\$345	\$210*

Each semester:	Separate bill, emailed
Textbook(s):	Varies
Misc. supplies:	Varies

*McLennan County students.
Estimate based on MCC Board policy passed 3/29/16.



College Courses at the High School

- ❑ Courses/times set by ISD administration
- ❑ Classes meet on the high school campus
- ❑ May run a little before/after the regular school day
- ❑ Follow the McLennan calendar

Other options may be available.



How to Enroll at MCC



STEP	OPTIONS/NOTES
McLennan Admissions Application	<ul style="list-style-type: none">● Applytexas.org application (preferred) <u>OR</u>● Paper application
High School Transcript	<ul style="list-style-type: none">● Most recent high school transcript AND official transcript from any other college attended● Submit 1 per academic year

How to Enroll at MCC



Enrollment Form

- Form complete with courses and signatures
- Required each semester

Tuition Exemption (optional)

- Form complete and signed
- Documentation attached
- Submit 1 per academic year

How to Enroll at MCC

Placement Testing

- TSI Assessment **OR**
- Other standardized test scores

Bacterial Meningitis Vaccination

- Only necessary for courses held on the MCC campus
- Must be dated within 5 years of first day of semester



Test Scores for Dual Credit

TSI Assessment Passing Scores

Reading	Math	Writing
351	350	<ul style="list-style-type: none">• Essay score of 5 OR• Essay score of 4 AND Multiple Choice score of 340
Required for ALL academic, workforce AAS, workforce level 2 certificate courses	Required for some courses, including MATH, ENGR, and some science	Required for some courses, including ENGL courses

Workforce Courses, Level 1 Certificate Program

TSIA Reading	TSIA Math	TSIA Writing
347	350	<ul style="list-style-type: none">• Essay score of 5 OR• Essay score of 4 AND Multiple Choice score of 340
Recommended	Only if required for course/program	Only if required for course/program



TSIA Waivers & Exemptions , Dual Credit

STAAR EOC Scores

English 2	English 3	Algebra 1	Algebra 2
4000+	Level 2 Final Phase-In Score	4000+ AND passing grade for Algebra 2	Level 2 Final Phase-In Score

Other Test Scores

Assessment	Composite	Reading/English	Math
ACT	23	19 English	19
SAT, March 2016+	None	480 EBRW	530
ACT-Aspire	None	435 English	431



How to Enroll at MCC



College Advising

- Not required for Level 1, Transfer Block
- Required for Level 2, Pathways

Terms and Conditions

- Accepted through WebAdvisor

HS Pathways Orientation

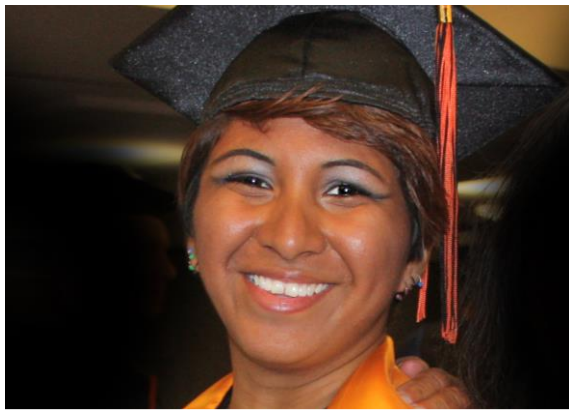
- Online orientation

Level 1: Transfer Block

Select any of these courses:	Select no more than 1 of these courses:
HIST 1301	ARTS 1301
HIST 1302	DRAM 1310
ENGL 1301	MUSI 1306
ENGL 1302	
GOVT 2305	Select no more than 1 of these courses*:
GOVT 2306	ECON 2301
	PSYC 2301
Future full-time McLennan students:	SOCI 1301
PSYC/EDUC 1300	*Some college degree plans require one specific course from this category. Students should check the future college degree plan or seek college advising voluntarily.

Maximum: 18 credit hours

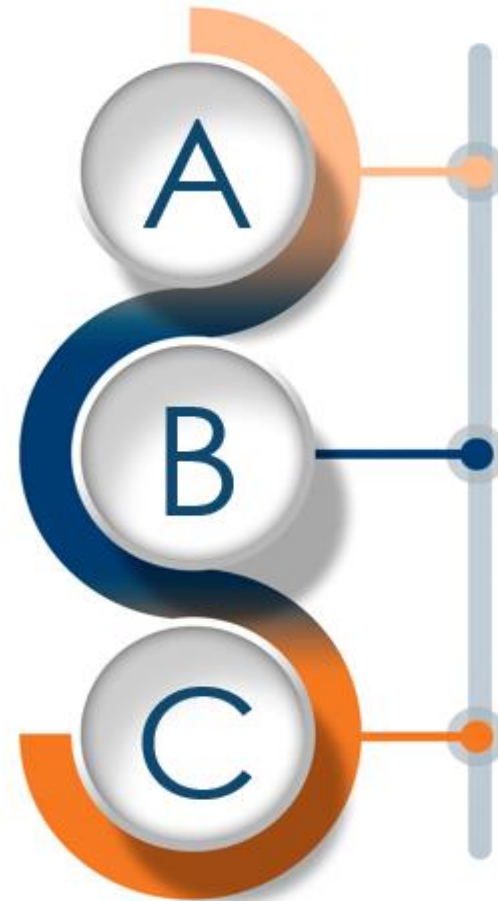




Accommodations

www.mclennan.edu/disability/requesting-disability-services

McLennan
COMMUNITY
COLLEGE



Complete the Request for Disabilities Services Form

- Located in WebAdvisor

Meet with MCC Disabilities Specialist

- Beginning of each semester
- Specialist decides appropriate accommodations

Professors notified by email

Full instructions available online.

Schedule Change

Contact the high school counselor and/or the High School Pathways office for any dual credit schedule change.

Students dropping a course must do so before the first day of the McLennan semester to avoid a forfeiture fee.



McLennan

C O M M U N I T Y

COLLEGE

Contact the High School Pathways Team!

Londa Carriveau
Stephanie Trammell
Jaylene Pipkin
(254) 299-8937
dualcredit@mclennan.edu

Sign up for our email list!

dc.mclennan.edu

