



Warren/Alvarado/Oslo Schools

District No. 2176
224 East Bridge Avenue
Warren, MN 56762

Bryan Hackbarth, Superintendent

Phone 218-745-5393, ext. 1208, FAX 218-745-5886
bhackbarth@wao.k12.mn.us

Kelsey Johnson, Elementary Principal

Phone 218-745-4441, ext. 1211, FAX 218-745-7659
kelseyjohnson@wao.k12.mn.us

Ben Miska, High School Principal

Phone 218-745-4646, ext. 1210, FAX 218-745-7658
bmiska@wao.k12.mn.us

Tony Gullikson, Activities Director

Phone 218-745-4646, ext. 1270, FAX 218-745-7658
tgulliks@wao.k12.mn.us

August 8, 2024

To WAO Students, Parents and Staff:

We are excited to start the 2024/2025 school year. We look forward to the progress we will make with the students and continuing to better each individual as well as the school as a whole. Part of the improvements will be to the facility when construction is completed. Improvements include changes made to the existing buildings, the addition between the buildings and a new parking lot. Throughout the construction, we will do our best to communicate to you changes of our traditional routines.

The information in this letter and accompanying map will explain procedures for drop off before school, parking during school and pick up after school. We hope these procedures will be temporary as we are excited to have the parking lot completed some time shortly after school starts.

Elementary Parents - RED markings on the map

We ask that you drop off and pick up students on the east side of the elementary (Door #1-lunchroom door) and treat this road as a one way heading south only. Signage on the roadway will reflect these directions. Parents are expected to stay in their car when dropping off and picking up students to avoid traffic backup. We ask that every car move as far forward as possible towards the end of the sidewalk when you first pull up, and continue to inch forward as cars move out of the drop off and pick up lane. This will allow other vehicles to pull in at the back of the line and avoid congestion on the highway. All drivers staying in their cars will allow for this process to run smoothly. Again, this roadway is a NO PARKING zone which will also be reflected by signage.

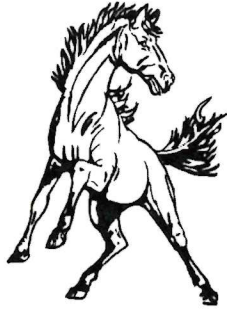
At no point will cars be allowed to take a right into the roadway behind the schools, in front of the playground. This is a bus only area. Until the parking lot is complete and we have a safe environment to do so, there will be no morning recess for students on the playground/blacktop. Afternoon recess will run as normal.

High School Parents - BLUE markings on the map

We ask that you drop off and pick up students on the west side of the high school. Two way traffic is allowed but be aware that students park and drive there as well.

High School Students Who Drive - LIGHT BLUE markings on the map

You will be able to park on the west side of the high school and north side of the Rec Center. Please drive and park appropriately.



Warren/Alvarado/Oslo Schools

District No. 2176
224 East Bridge Avenue
Warren, MN 56762

Bryan Hackbarth, Superintendent

Phone 218-745-5393, ext. 1208, FAX 218-745-5886
bhackbarth@wao.k12.mn.us

Kelsey Johnson, Elementary Principal

Phone 218-745-4441, ext. 1211, FAX 218-745-7659
kelseyjohnson@wao.k12.mn.us

Ben Miska, High School Principal

Phone 218-745-4646, ext. 1210, FAX 218-745-7658
bmiska@wao.k12.mn.us

Tony Gullikson, Activities Director

Phone 218-745-4646, ext. 1270, FAX 218-745-7658
tgulliks@wao.k12.mn.us

Staff Parking - GREEN markings on the map

Staff will be able to park on the south side of the high school and along each side of Highway 1.

Bus Pickup and Drop off - YELLOW markings on the map

In the morning buses will first drop off high school students on the west side of the high school and then drive to the south side of the elementary to drop off elementary students. Buses will pick up both elementary and high school students after school on the south side of the elementary.

Event Parking

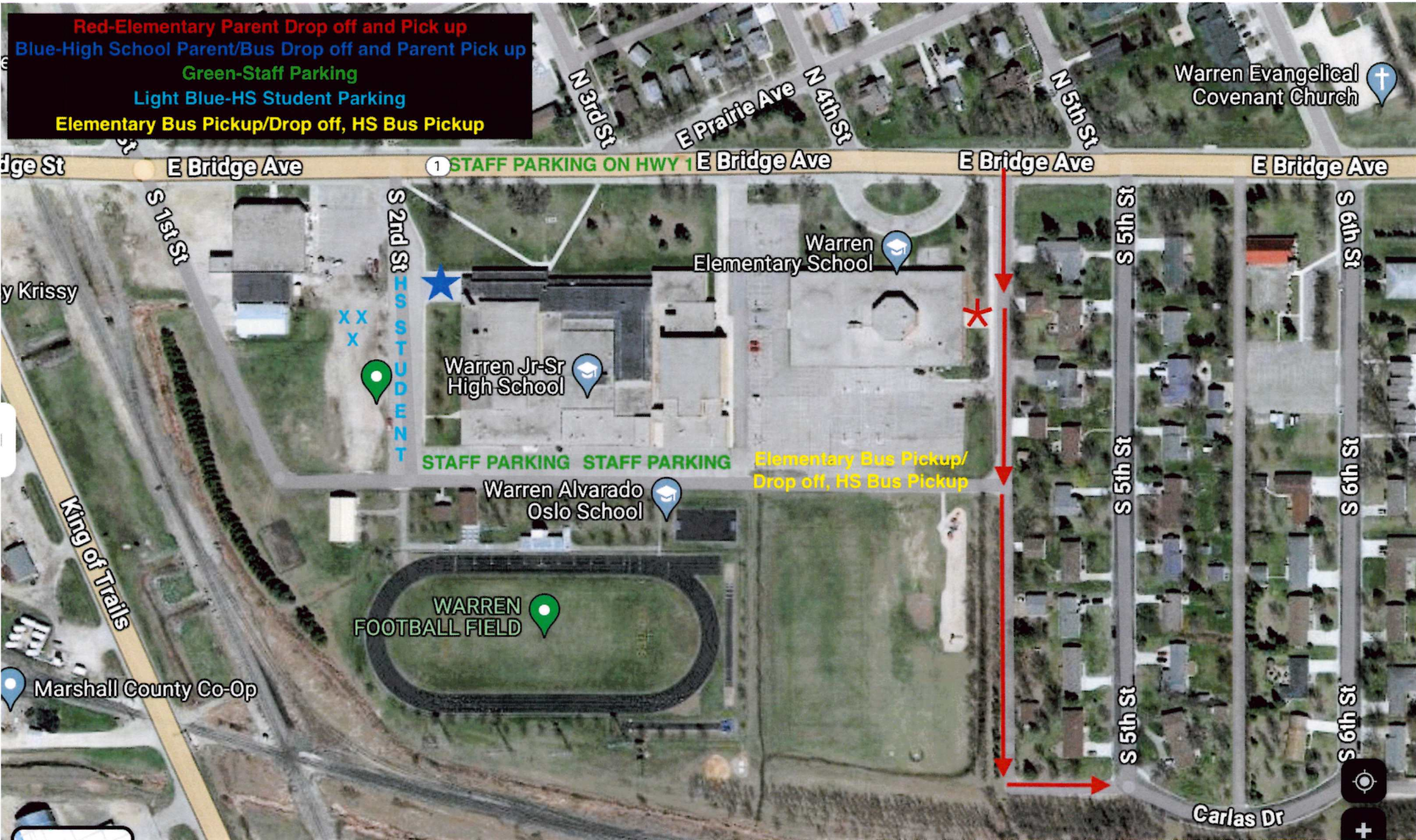
For after school events, please park on the south side and west side of the high school. You can also park around the rec center and along Highway 1. For outdoor events, walk on the west side of the high school or south side of the elementary to enter. For indoor events, enter Door 10 on the west of the high school and walk through the building to the gym.

We are excited for the future opportunities we will have when construction is completed and will do our best to keep you up to date. If you have questions, please reach out and we will do our best to clarify the flow of people before and after school.

Sincerely,

Ben Miska
WAO High School Principal

Kelsey Johnson
WAO Elementary Principal



Red-Elementary Parent Drop off and Pick up
Blue-High School Parent/Bus Drop off and Parent Pick up
Green-Staff Parking
Light Blue-HS Student Parking
Elementary Bus Pickup/Drop off, HS Bus Pickup

1 STAFF PARKING ON HWY 1 E Bridge Ave

STAFF PARKING STAFF PARKING Elementary Bus Pickup/ Drop off, HS Bus Pickup

WARREN FOOTBALL FIELD

Warren Jr-Sr High School

Warren Elementary School

Warren Alvarado Oslo School

Warren Evangelical Covenant Church

Marshall County Co-Op

King of Trails

y Krissy

Carlos Dr