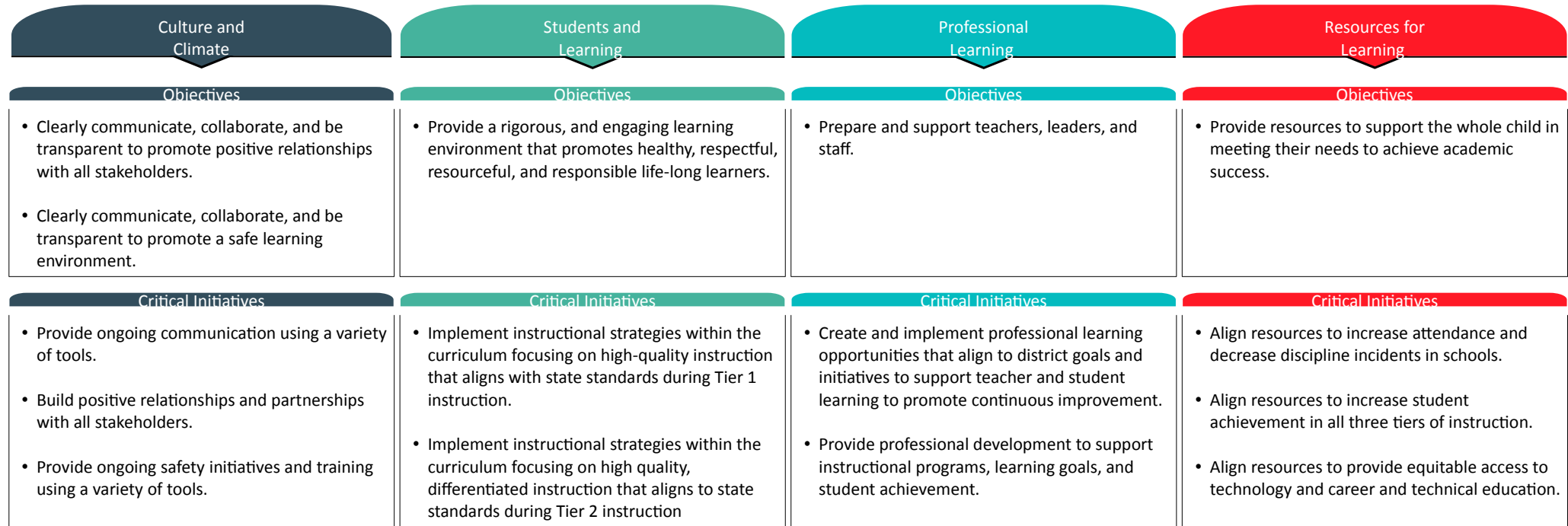
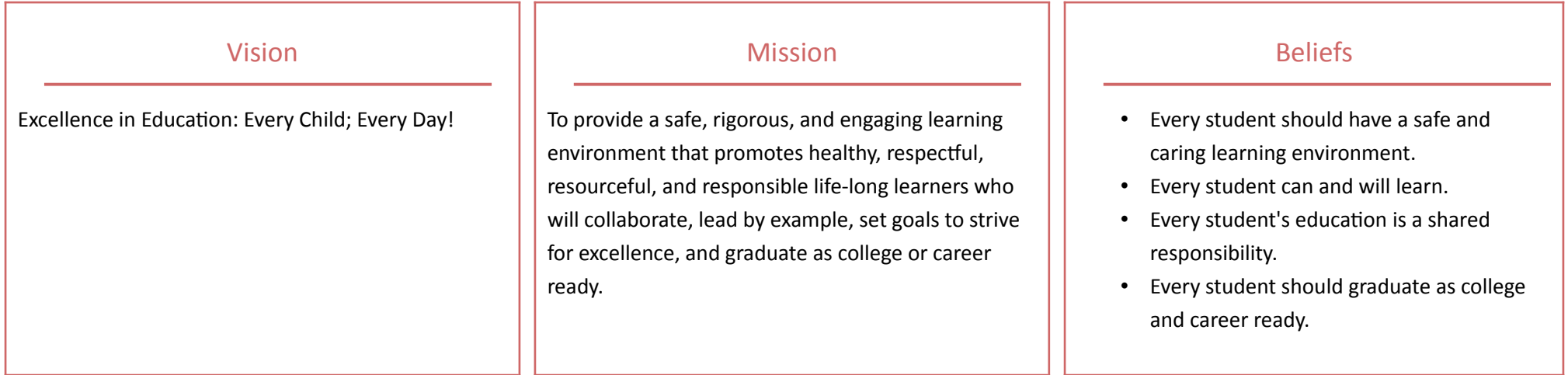


W. S. Neal High School



| Critical Initiatives | Critical Initiatives | Critical Initiatives | Critical Initiatives |
|--|---|---|--|
| | <ul style="list-style-type: none"> Implement instructional strategies within the curriculum focusing on high quality, differentiated instruction that aligns to state standards during Tier 3 instruction. | <ul style="list-style-type: none"> Recruit and retain teachers, leaders and staff. | <ul style="list-style-type: none"> Align resources to support social emotional and behavioral needs of all learners. |
| Key Measures | Key Measures | Key Measures | Key Measures |
| <ul style="list-style-type: none"> Newsletters and Communications StreamVu, Social Media, Schoology Schoology Weekly Progress Reports Local School Parent/Community Events Centegix Usage Reports Blocksi School safety plans | <ul style="list-style-type: none"> Report Card Grades ACT online (prep) Pre-ACT, ACT, ACT WorkKeys, Credentials Use of Lesson Plans and Pacing Guides | <ul style="list-style-type: none"> Pre-ACT, ACT, ACT WorkKeys, Credentials Performance Matters Data PD Logs (True North Logic reports) PD Schedule Job Fair, Mentoring, and PD | <ul style="list-style-type: none"> Performance Matters and PowerSchool Reporting Pre-ACT, ACT, ACT WorkKeys, Credentials Performance Matters Data Library Circulation Technology Inventory Nearpod, Schoology Master Schedules Credentialing Rhithm Social Workers, SRO, Contracted Services Mentor/Mentee Kudor use and reporting |