

Cohort Comparison

This report displays longitudinal results for cohorts (the same students). Use this information to evaluate the progress of groups of students over time for state tests.

How to access: Click on the A+ icon and then Cohort Comparison under the Lagging Indicators



Show Filter Summary

Primary AYP Subject: -Select Subject-	Cohort AYP Subject: -Select Subject-
Graph Type:	<input type="button" value="Process"/>

Primary Filters

Demographics

- Gender Male
- SWD
- LEP
- ED
- Migrant
- Ethnicity
- Current Grade 7
- School of Enrollment

Comparative Filters

Demographics

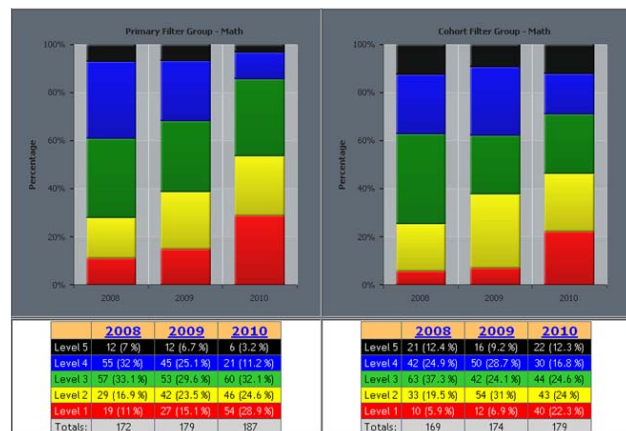
- Gender Female
- SWD
- LEP
- ED
- Migrant
- Ethnicity
- Current Grade 7
- School of Enrollment

- ✓ Use the iFilters to select the student cohort groups to be viewed. It is suggested that the cohorts selected vary by one descriptor. In the sample below, grade 7 boys are being compared to grade 7 girls for the same Subject and school.
- ✓ Now select the Primary AYP Subject and the Cohort AYP Subject – in the sample below Math has been selected.
- ✓ Refresh the report after setting the filters

Primary Filters	Comparative Filters
Demographics	Demographics
<ul style="list-style-type: none"> Gender: Male Current Grade: 7 	<ul style="list-style-type: none"> Gender: Female Current Grade: 7
Primary AYP Subject: Math	Cohort AYP Subject: Math
Graph Type:	<input type="button" value="Process"/>

NOTE: The Primary Filters control the left graph and the Comparative Filters control the right graph.

- ✓ Select the Subject for the Primary and Comparative groups. (Math was chosen in the example above)
- ✓ Click Process

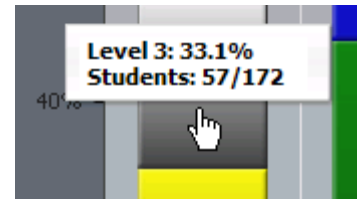
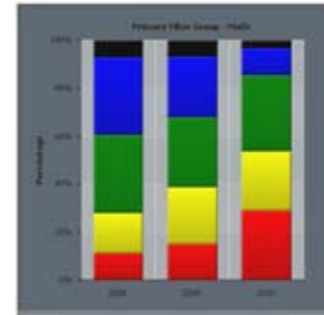


How to Read:

- ✓ The idea for the graph is to get the red out how many students and percent make up that area. In the case of district with 4 or more levels, we want to get the red and yellow reduced over time.

Looking at the graph on the right we are losing ground at every level. Now the question is, is this our instructional decisions? Are all schools/districts seeing this because the tests for each year are progressively harder than just a grade level increase?

- ✓ Hover over any color in the bar graph to see values for each level. (see picture on right)
- ✓ Those values are also shown in the table below the graphs



	2008	2009	2010
Level 5	12 (7 %)	12 (6.7 %)	6 (3.2 %)
Level 4	55 (32 %)	45 (25.1 %)	21 (11.2 %)
Level 3	57 (33.1 %)	53 (29.6 %)	60 (32.1 %)
Level 2	29 (16.9 %)	42 (23.5 %)	46 (24.6 %)
Level 1	19 (11 %)	27 (15.1 %)	54 (28.9 %)
Totals:	172	179	187

In the sample at the left scores for 172 males are shown for 2008, 179 males scores for 2009, etc. So these aren't necessarily the same students, even though some are.

2008	2009	2010
------	------	------

By clicking on a specific year, scores can be shown for the same cohort of students.

In the sample at the right, the year 2008 has been clicked and the results are displayed for the same continuously enrolled students over the three years. The male group of students contains 163 students.

	2008	2009	2010
Level 5	11 (6.7 %)	11 (6.7 %)	6 (3.7 %)
Level 4	55 (33.7 %)	41 (25.2 %)	20 (12.3 %)
Level 3	52 (31.9 %)	49 (30.1 %)	52 (31.9 %)
Level 2	28 (17.2 %)	40 (24.5 %)	43 (26.4 %)
Level 1	17 (10.4 %)	22 (13.5 %)	42 (25.8 %)
Totals:	163	163	163

Questions to Ask:

- Are we closing the achievement gaps for our various student subgroups ?
- How did the students in my school perform compared to the rest of the district?
- Are the same students improving in one subject faster than another.
- How many students comprise each of the performance levels?

When to Use: This report is available anytime throughout the year, but is most impactful upon receipt of the state test results in the spring-fall timeframe.

Export: Right click on the graph and choose either the Print chart, Save as image... or Save as pdf... option. Options vary depending upon the browser being used.

