

FOOTBALL/SOCCER/TRACK ATHLETIC EMERGENCY ACTION PLAN

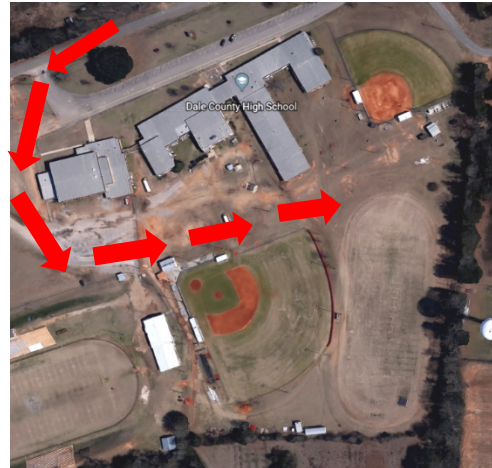


1. The highest person on the chain of command will be deemed the leader, and will stay with the athlete to monitor the athlete's condition and administer necessary first aid. If possible, someone else on the chain of command should also stay and assist. The front office or an administrator should be notified that there is an emergency situation on campus.

2. The highest person on the chain of command will make the call to EMS or will designate another person to make the call. (911 from a cell phone or pay phone.)

Specific instructions: **Emergency Contact: Matt Humphrey, Principal**
Will Garner, Head Football Coach
Rich Bedesem and Michael Heer, Head Soccer Coaches
Troy Hicks and Mason Black, Head Track Coaches

EMS should be told what the emergency is, the condition of the athlete and how to get to where the athlete is. Also, tell EMS that someone will meet them at the closest intersection to aid in directing the ambulance. **DO NOT HANG UP UNTIL EMS HANGS UP FIRST.**



3. Phones at **Football Stadium** are located: **Coaches Football Office**

4. The leader will send runners to all intersections between where the athlete is located and **Athletic Field** to direct the ambulance to the athlete. The runners should stay in their positions and wave the ambulance through the proper turns to get to the athlete.

5. The leader will designate another person to attempt contact with the athlete's parents, Emergency contact information can be found **Principal's Office Filing Cabinet**.

If a parent is not present, the form should accompany the athlete to the hospital.

6. If transport is deemed necessary by EMS, the athlete will be taken to **Flowers Hospital**, unless the parent requests otherwise.

- Venue is located at: **Dale County High School**
11740 South County Road 59
Midland City, AL 36350
- The closest intersection to the venue is Hinton Waters Ave and County Road 59
- Pertinent landmarks include: Railroad tracks and Water Tower
- Location of AED's
 - **Main Office Lobby, Gymnasium Lobby, End of Short Hall by Exit Door, Football Assistant Coach's Office-Field House, Located with Athletic Trainer (Health Science Room)**

*Coaches should take note of the closest AED to their practice and game locations.

SOFTBALL

ATHLETIC EMERGENCY ACTION PLAN

1. The highest person on the chain of command will be deemed the leader, and will stay with the athlete to monitor the athlete's condition and administer necessary first aid. If possible, someone else on the chain of command should also stay and assist. The front office or an administrator should be notified that there is an emergency situation on campus.



2. The highest person on the chain of command will make the call to EMS or will designate another person to make the call. (911 from a cell phone or pay phone.)

Specific instructions: **Emergency Contact: Matt Humphrey, Principal
Nicole Dutton, Head Softball Coach**

EMS should be told what the emergency is, the condition of the athlete and how to get to where the athlete is. Also, tell

EMS that someone will meet them at the closest intersection to aid in directing the ambulance. **DO NOT HANG UP UNTIL EMS HANGS UP FIRST.**

3. Phones at **Softball Field** are located: **Coaches Softball Office**

4. The leader will send runners to all intersections between where the athlete is located and **Athletic Field** to direct the ambulance to the athlete. The runners should stay in their positions and wave the ambulance through the proper turns to get to the athlete.

5. The leader will designate another person to attempt contact with the athlete's parents, Emergency contact information can be found **Principal's Office Filing Cabinet**.

If a parent is not present, the form should accompany the athlete to the hospital.

6. If transport is deemed necessary by EMS, the athlete will be taken to **Flowers Hospital**, unless the parent requests otherwise.

- Venue is located at: **Dale County High School
11740 South County Road 59
Midland City, AL 36350**
- The closest intersection to the venue is Hinton Waters Ave and County Road 59
- Pertinent landmarks include: Railroad tracks and Water Tower
- Location of AED's
 - **Main Office Lobby, Gymnasium Lobby, End of Short Hall by Exit Door, Football Assistant Coach's Office-Field House, Located with Athletic Trainer (Health Science Room)**

*Coaches should take note of the closest AED to their practice and game locations.

BASEBALL ATHLETIC EMERGENCY ACTION PLAN

1. The highest person on the chain of command will be deemed the leader, and will stay with the athlete to monitor the athlete's condition and administer necessary first aid. If possible, someone else on the chain of command should also stay and assist. The front office or an administrator should be notified that there is an emergency situation on campus.



2. The highest person on the chain of command will make the call to EMS or will designate another person to make the call. (911 from a cell phone or pay phone.)

Specific instructions: **Emergency Contact:**
Matt Humphrey, Principal
Patrick Street, Head Baseball Coach

EMS should be told what the emergency is, the condition of the athlete and how to get to where the athlete is. Also, tell EMS that someone will meet them at the closest intersection to aid in directing the ambulance. **DO NOT HANG UP UNTIL EMS HANGS UP FIRST.**

3. Phones at **Baseball Field** are located: **Coaches Baseball Office**

4. The leader will send runners to all intersections between where the athlete is located and **Athletic Field** to direct the ambulance to the athlete. The runners should stay in their positions and wave the ambulance through the proper turns to get to the athlete.

5. The leader will designate another person to attempt contact with the athlete's parents, Emergency contact information can be found **Principal's Office Filing Cabinet**.

If a parent is not present, the form should accompany the athlete to the hospital.

6. If transport is deemed necessary by EMS, the athlete will be taken to **Flowers Hospital**, unless the parent requests otherwise.

- Venue is located at: **Dale County High School**
11740 South County Road 59
Midland City, AL 36350
- The closest intersection to the venue is Hinton Waters Ave and County Road 59
- Pertinent landmarks include: Railroad tracks and Water Tower
- Location of AED's
 - **Main Office Lobby, Gymnasium Lobby, End of Short Hall by Exit Door, Football Assistant Coach's Office-Field House, Located with Athletic Trainer (Health Science Room)**

*Coaches should take note of the closest AED to their practice and game locations.

BASKETBALL

ATHLETIC EMERGENCY ACTION PLAN

1. The highest person on the chain of command will be deemed the leader, and will stay with the athlete to monitor the athlete's condition and administer necessary first aid. If possible, someone else on the chain of command should also stay and assist. The front office or an administrator should be notified that there is an emergency situation on campus.



Basketball Office

2. The highest person on the chain of command will make the call to EMS or will designate another person to make the call. (911 from a cell phone or pay phone.)

Specific instructions: **Emergency Contact:**
Matt Humphrey, Principal
James Edmonds, Head Basketball Coach
Logan Pitchford, Head Volleyball Coach

EMS should be told what the emergency is, the condition of the athlete and how to get to where the athlete is. Also, tell EMS that someone will meet them at the closest intersection to aid in directing the ambulance. **DO NOT HANG UP UNTIL EMS HANGS UP FIRST.**

3. Phones at **Basketball Gym** are located: **Coaches**

4. The leader will send runners to all intersections between where the athlete is located and **Athletic Gymnasium** to direct the ambulance to the athlete. The runners should stay in their positions and wave the ambulance through the proper turns to get to the athlete.

5. The leader will designate another person to attempt contact with the athlete's parents, Emergency contact information can be found **Principal's Office Filing Cabinet**.

If a parent is not present, the form should accompany the athlete to the hospital.

6. If transport is deemed necessary by EMS, the athlete will be taken to **Flowers Hospital**, unless the parent requests otherwise.

- Venue is located at: **Dale County High School**
11740 South County Road 59
Midland City, AL 36350
- The closest intersection to the venue is Hinton Waters Ave and County Road 59
- Pertinent landmarks include: Railroad tracks and Water Tower
- Location of AED's
 - **Main Office Lobby, Gymnasium Lobby, End of Short Hall by Exit Door, Football Assistant Coach's Office-Field House, Located with Athletic Trainer (Health Science Room)**

*Coaches should take note of the closest AED to their practice and game locations.