



# New Milford Public Schools 2025-2026 Budget Overview

Tuesday, January 14, 2025



Catherine Calabrese, Principal  
Kerri Adakonis, Asst Principal



Gwen Gallagher, Principal  
Shannon Surreira, Asst Principal



Anne Bilko, Principal  
Jen Chmielewski, Asst Principal  
Jen Meyers, Asst Principal



## New Milford Public Schools

### Mission Statement



The mission of the New Milford Public Schools, a **collaborative partnership** of students, educators, family and community, is to **prepare each and every student:**

- To compete and excel in an ever-changing world;
- To embrace challenges with vigor;
- To respect and appreciate the worth of every human being, and contribute to society by *providing effective instruction* and *dynamic curriculum* , offering a *wide range of valuable experiences* , and *inspiring students* to pursue their dreams and aspirations.

# New Milford Public Schools: Ideas We Live By

Focus



Heart



Collaboration



Creativity



# ♥ Our Character Traits and CORE Values ♥







# New Milford Public Schools Budget Overview for 2025-2026

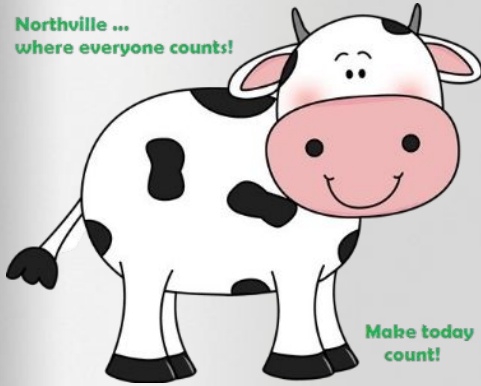


Certified Teachers	Gen= 19 EXCEL= 3 SpEd= 4 Unified Arts= 4
Projected Enrollment	<b>Projected 351</b> 45 Preschool 98 Kindergarten 92 1st Grade 116 2nd Grade
Projected Class Size	Preschool - <b>7.5</b> 3 teachers Kindergarten - <b>16.3</b> 6 teachers 1st Grade - <b>15.3</b> 6 teachers 2nd Grade - <b>19.3</b> 6 Teachers



# New Milford Public Schools Budget Overview for 2025-2026

Northville ...  
where everyone counts!



Make today  
count!

Certified Teachers	Gen= 21 EXCEL= 3 SpEd= 5 Unified Arts= 4
Projected Enrollment	<b>407:</b> 58 Preschool 112 Kindergarten 106 1st Grade 131 2nd Grade
Projected Class Size	Preschool - <b>9.7</b> - 3 teachers Kindergarten - <b>16</b> - 7 teachers 1st Grade - <b>15.1</b> - 7 teachers 2nd Grade - <b>18.7</b> - 7 teachers





# New Milford Public Schools Budget Overview for 2025-2026

## Sarah Noble Intermediate School

New Milford, CT



Certified Teachers	Gen Ed. - 35 Special Ed. - 11 Unified Arts - 11
Projected Enrollment	<b>757:</b> 259 3rd Grade 259 4th Grade 235 5th Grade
Projected Class Size	3rd Grade - 21.6 - 12 teachers 4th Grade - 21.4 - 12 teachers 5th Grade - 21.9 - 11 teachers

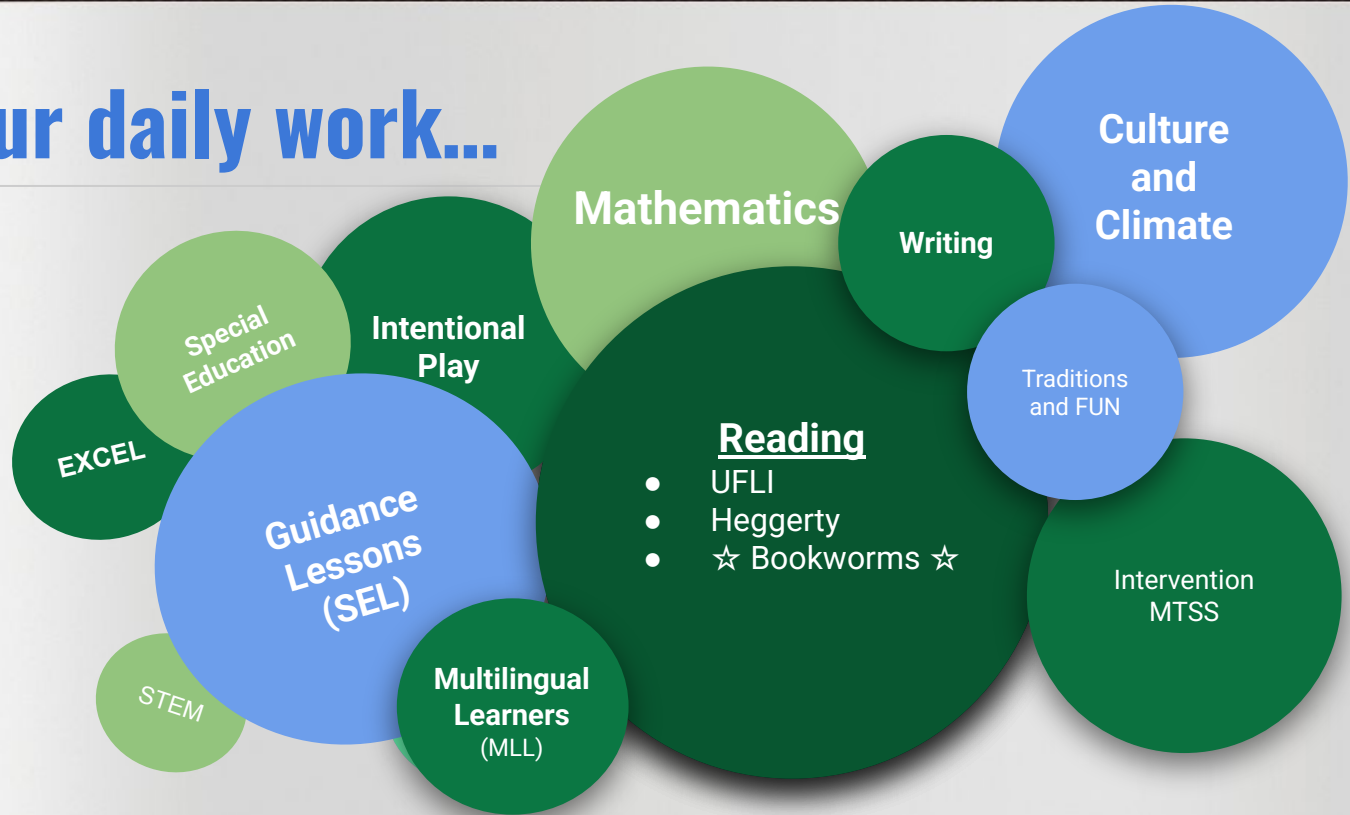
# Mid Year Benchmark Currently Happening...

---





# Our daily work...



## Academic Learning at HPS, NES, and SNIS





## Social and Emotional Learning at HPS, NES, and SNIS





# We ♥ our community!



NEW MILFORD PACK 467 TIGER DEN PRESENTS:

## CAN & BOTTLE DRIVE

**FUNdraiser for**  
ISABELLE "IZZY" ANDERSON

WHEN: December 3<sup>rd</sup>, 10<sup>th</sup> and 17<sup>th</sup> 6-7PM

DROP OFF: TUESDAYS AT JPOC (2 PICKETT DISHWASH RD., NEW MILFORD, CT) FROM 12:30 BINS WILL BE LOCATED ON DOORS CLOSEST TO RAMP. 7 ENTRANCE

In the spirit of Izzy's 8<sup>th</sup> birthday, please help us turn your bottles and cans (with a CTRV bottle deposit) into change. All funds raised will be donated to our dear friend Izzy and her fight against neuroblastoma! Accepting bottles and cans of all shapes and sizes. No sorting necessary.

FOR MORE INFORMATION OR TO ARRANGE PICK-UP/DROP-OFF CONTACT TIM AT TEAMIZZY24@GMAIL.COM





# We ♥ our PTOs!

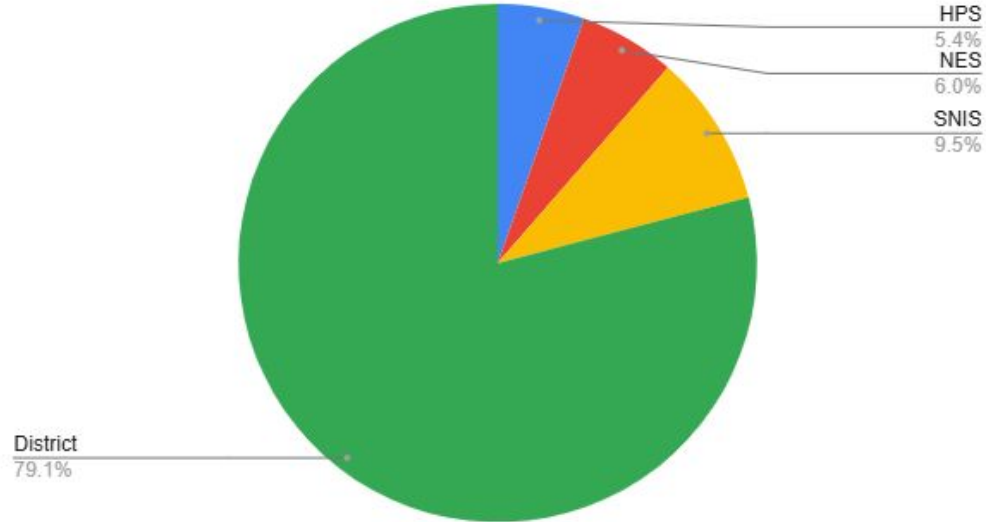






# New Milford Public Schools Budget Overview for 2025-2026

Total Budget







# New Milford Public Schools Budget Overview for 2025-2026


## **This budget ensures continued work on ...**

- Science of Reading
- iReady Mathematics
- Academic Interventions:
  - Special Education
  - Multilingual Learners
  - MTSS: tier intervention
- Social Emotional Support for all

# This budget aligns to our district strategic ambitions ...


We create the conditions for:

Students to be on-track!



## HILL AND PLAIN ON-TRACK

- A** **ACADEMICS**  
Reach or Exceed Targeted Growth
- B** **BE HERE**  
95% Daily Attendance
- C** **COMMUNITY**  
Relationships Matter
- D** **DO THE RIGHT THING!**  
Be a CORE Values Citizen



## NORTHVILLE ON-TRACK

- A** **ACADEMICS**  
Reach or Exceed Targeted Growth
- B** **BE HERE**  
95% Daily Attendance
- C** **COMMUNITY**  
Relationships Matter
- D** **DO THE RIGHT THING!**  
Be a C.A.R.E.S. Citizen



## SNIS ON-TRACK

- A** **ACADEMICS**  
Ready to learn and actively participate
- B** **BE HERE**  
95% Daily Attendance
- C** **COMMUNITY**  
Be a good friend to all
- D** **DO THE RIGHT THING!**  
Follow the school pledge



# Our work is ...*Centered* upon the whole child, emphasizing:

★ Content Area Learning

★ Communication

★ Critical Thinking

★ Problem Solving

★ Growth Mindset

★ Personal Relationships and Social Awareness

★ Self-Management



# Which is ...

*Driven* by the Ideas We Live By:

Focus



Heart



Collaboration



Creativity



**and *Built* upon the foundations of...**

- ★ safe, welcoming, and respectful schools
- ★ dynamic curricula
- ★ intentionally-designed instruction based upon the science of student and adult learning



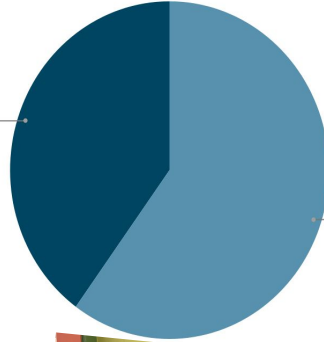
**all while...**

- ★ partnering with families and the community!



### HPS Assistant Principal

Proposed  
40.0%



Currently  
60.0%





# WHY?

1

Student Support and  
Advocacy

2

Building Relationships  
with Families

3

Discipline and Behavior  
Support

4

Crisis Management

5

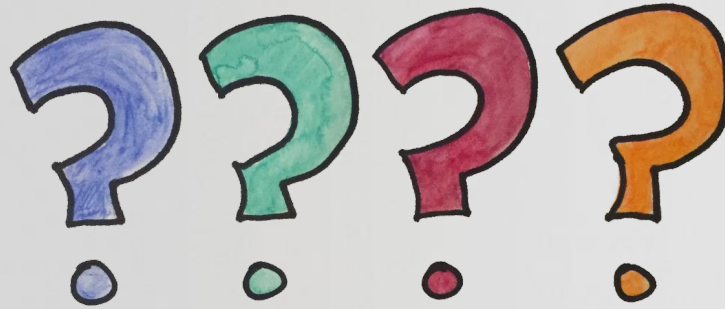
Teacher Support and  
Professional Development

6

Data Analysis and School  
Improvement



# New Milford Public Schools Budget Overview for 2025-2026



*Any questions for the K - 5 Administration?*

**Thank you for your time and support!**