

**NEW MILFORD BOARD OF EDUCATION**  
New Milford Public Schools  
25 Sunny Valley Road, Suite A  
New Milford, Connecticut 06776

**FACILITIES SUB-COMMITTEE**  
**MEETING NOTICE**

RECEIVED  
TOWN CLERK  
2021 MAY 10 A 9:35  
NEW MILFORD, CT

<b>DATE:</b> May 14, 2024
<b>TIME:</b> 6:45 P.M.
<b>PLACE:</b> Sarah Noble Intermediate School Library Media Center

**AGENDA**

**New Milford Public Schools Mission Statement**

The mission of the New Milford Public Schools, a collaborative partnership of students, educators, family, and community, is to prepare each and every student to compete and excel in an ever-changing world, embrace challenges with vigor, respect and appreciate the worth of every human being, and contribute to society by providing effective instruction and dynamic curriculum, offering a wide range of valuable experiences, and inspiring students to pursue their dreams and aspirations.

- 1. Call to Order**
- 2. Public Comment**

An individual may address the Board concerning any item on the agenda for the meeting subject to the following provisions:

- A. A three-minute time limit may be allocated to each speaker with a maximum of twenty minutes being set aside per meeting. The Board may, by a majority vote, cancel or adjust these time limits.
- B. If a member of the public comments about the performance of an employee or a Board member, whether positive, negative, or neutral, and whether named or not, the Board shall not respond to such comments unless the topic is an explicit item on the agenda and the employee or the Board member has been provided with the requisite notice and due process required by law. Similarly, in accordance with federal law pertaining to student confidentiality, the Board shall not respond to or otherwise discuss any comments that might be made pertaining to students.

- 3. Items for Information and Discussion**

- A. NMHS Updates:
  - 1.) NMHS Woodshop HVAC
  - 2.) Roof Project
  - 3.) Gym Floor
- B. Sarah Noble Oil Tank
- C. Central Offices
- D. Facilities Student Intern
- E. Playground Focus Groups

- 4. Public Comment**

An individual may address the Board concerning any item on the agenda for the meeting subject to the following provisions:

- A. A three-minute time limit may be allocated to each speaker with a maximum of twenty minutes being set aside per meeting. The Board may, by a majority vote, cancel or adjust these time limits.
- B. If a member of the public comments about the performance of an employee or a Board member, whether positive, negative, or neutral, and whether named or not, the Board shall not respond to such comments unless the topic is an explicit item on the agenda and the employee or the Board member has been provided with the requisite notice and due process required by law. Similarly, in

accordance with federal law pertaining to student confidentiality, the Board shall not respond to or otherwise discuss any comments that might be made pertaining to students.

**5. Adjourn**

**Sub-Committee Members:**            **Tom O'Brien, Chairperson**  
    **Brian McCauley**  
    **Eric Hansell**  
    **Leslie Sarich**

**Alternates:**                            **Dean Barile**

# NEW MILFORD PUBLIC SCHOOLS



## Facilities Subcommittee Report

**May 14, 2024**

### **Items for Information and Discussion**

#### **A. NMHS Updates**

##### **1. NMHS Woodshop HVAC**

Hawley Construction has ordered the new dust collector and it has a tentative ship date of May. The concrete slab which supports the dust collector has been scheduled to be poured the week of 5/13-17.

##### **2. Roof Project**

A solution for addressing the missing fasteners and clips is still being developed.

##### **4. Gym Floor**

NMHS gym floor work will begin in June after graduation and grad party.

#### **B. Sarah Noble Oil Tank**

A compliance plan to address the CT DEEP notice of violation was submitted by Weston & Sampson on behalf of the schools. In addition, they will be submitting a 30 day notice of closure to CT DEEP. Cisco Environmental has provided a proposal for tank removal. We anticipate moving forward with that work once summer recess begins.

### **C. Central Offices**

The next step for a stand-alone building would be to pursue the services of an A & E firm to conduct a feasibility study including site analysis.

### **D. Facilities Student Intern**

The Facilities Department has worked in conjunction with staff and Administration at New Milford High School to acquire the services of a student intern. Elias Nelson '27 has been coming over to the department offices for several weeks now assisting with creating annotated drawings for use in the upcoming HVAC evaluations. An example of this work has been included in the agenda packet.

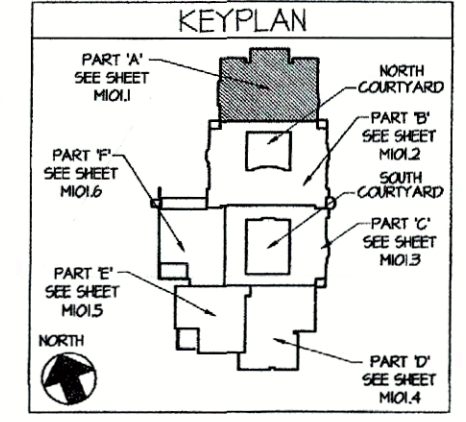
### **E. Playground Focus Groups**

I had the pleasure of meeting with student representative groups at all three elementary schools over the past two weeks to discuss playgrounds. These were great sessions where the groups could comment on current playground equipment and what types of apparatuses they would like to see on their playgrounds in the future. Their input is vital in helping us provide our students with engaging inclusive equipment for the coming years.



K:\M9 projects\49801.dwg\COMMON\BARRIER 8-25-98 9:01:27 am EST

This drawing and details on it, as an instrument of service, is the property of the architect and may be used for this specific project and shall not be loaned, copied or reproduced without written consent of the architect.



- GENERAL NOTES:**
- REFER TO DRAWINGS ME401, ME402 AND ME403 FOR HVAC SCHEDULES
  - REFER TO DRAWINGS ME403 FOR SYMBOL LIST AND LIST OF ABBREVIATIONS
  - PROVIDE CONTROL ON EACH HH BRANCH FEED TO RADIANT PANEL
  - REFER TO DWS, M301 & 302 FOR EQUIPMENT, PIPING AND DUCTWORK DETAILS
- KEY PLAN NOTES:**
- RETURN GRILLE (TYP) REFER TO DIFFUSER, REGISTER & GRILLE SCHEDULE ON DWS, ME403.
  - TRANSFER DUCT (TYP) REFER TO DETAIL II ON DWS, M302
  - RADIANT CEILING PANEL, RUN PANEL, HALL TO HALL OR COLUMN TO COLUMN CUT OUT PANEL FOR COLUMN ENCLOSURES, REFER TO DETAIL 14 ON M302 FOR PIPING ARRANGEMENT & INSTALLATION DETAILS.
  - INTERNAL LINING ON DUCTWORK SHALL BE EQUAL TO "MANVILLE" LINACASTIC R-3000 RIGID FIBERGLASS DUCT LINER ASTM 2071, 621 AND 622 1" THICK
  - 16 GAUGE 316 STAINLESS STEEL DUCT WELDED, LIQUID TIGHT
  - ALUMINUM DRYER EXHAUST DUCT SMOOTH INSIDE SO AS NOT TO CATCH LINT. PROVIDE CLEANOUT AT DRYER
  - SEISMIC EXPANSION JOINT "MASON" HINGED TYPE. REFER TO DETAIL 8 ON DWS, M302.
  - LINED DUCTWORK IN SHAFT.
  - MOTORIZED EXHAUST AIR VALVES (PHOENIX) FOR FUME HOOD & GENERAL ROOM EXHAUST.

PROJECT MANAGER: J. COSTA  
 PROJECT DESIGNER: J. SELLS  
 ARCHITECT/ENGINEER: J. GREENSPUN  
 DRAWN BY: D.E.K.



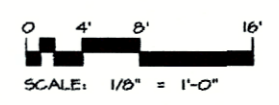
ARCHITECTURE / ENGINEERING / INTERIOR DESIGN

FLETCHER-THOMPSON, INC.  
 TWO LAFAYETTE SQUARE  
 BRIDGEPORT, CT 06604-3944

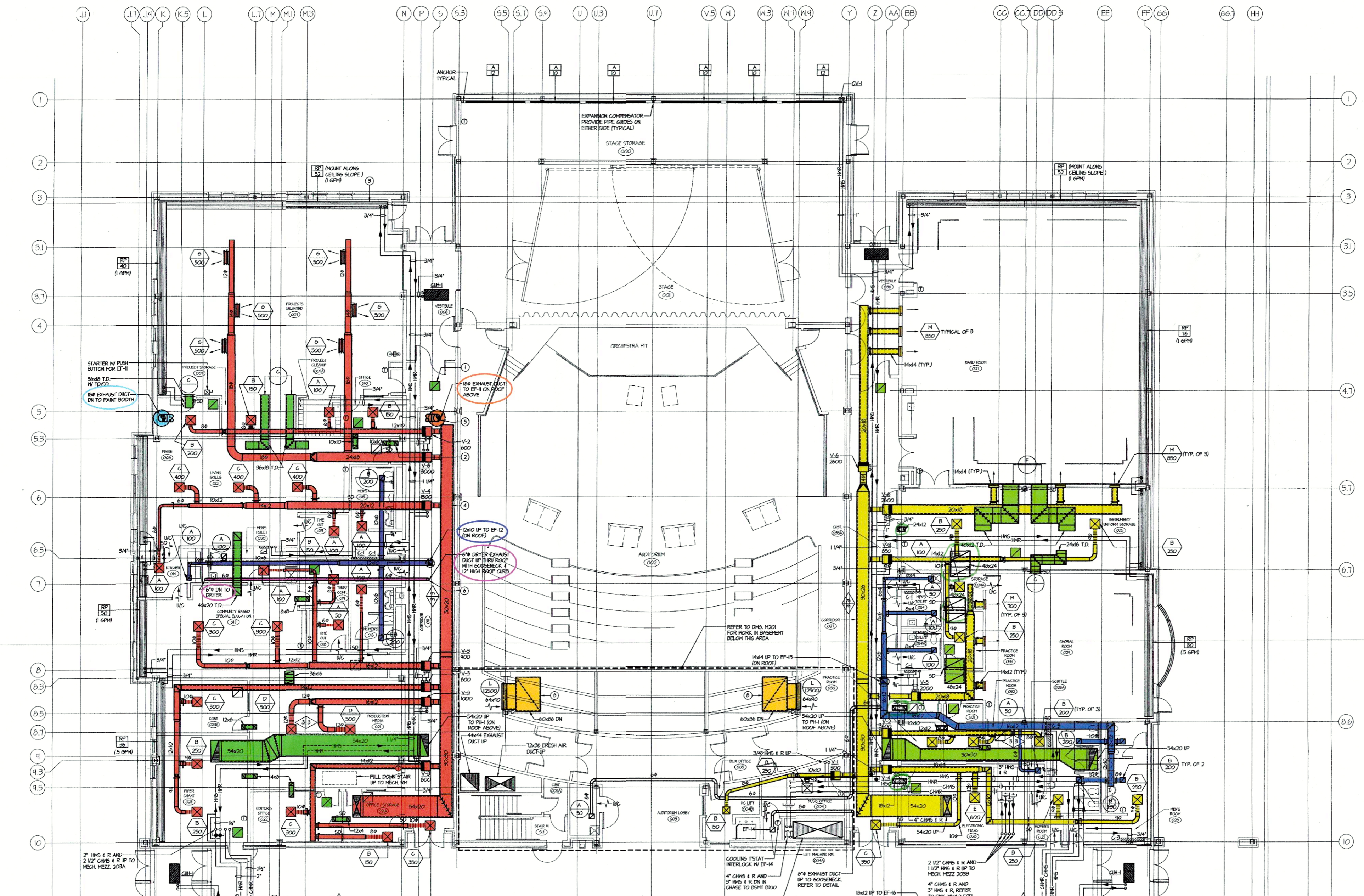
PROJECT TITLE  
**NEW MILFORD HIGH SCHOOL**  
 LARSON FARM  
 NEW MILFORD, CT

STATE PROJECT NO. 096-032N

DRAWING TITLE  
**FIRST FLOOR PLAN - PART "A" - HVAC**



NO.	DATE	REVISION	BY
DATE	SEPTEMBER 8, 1998		
SCALE	1/8" = 1'-0"		
PROJECT NO.	49801.06		
DRAWING NO.	<b>M101.1</b>		



**FIRST FLOOR PLAN - PART "A"**  
 SCALE: 1/8" = 1'-0"

K:\M9 projects\49801.dwg\COMMON\BARRIER 8-25-98 11:06:04 am EST