



Wayne County Schools

Dr. Ricky Inman, Director of Schools
Mr. Andy Yarbrough, Chairman

419 South Main Street
PO Box 658
Waynesboro, TN 38485
Phone: (931) 722-3548
Fax: (931) 722-7579
www.waynetn.net

Bid Notice **Campus Lawn Care** **Bids Due Thursday, March 7, 2024 at 2:00 P.M.**

The Wayne County Board of Education is accepting bids for school campus lawn care (mowing, weed-eating, etc.). Specifications are available at www.waynetn.net or from the Wayne County Board of Education, 419 South Main Street, P.O. Box 658, Waynesboro, TN 38485. Bids must be sealed and labeled "Lawn Care Bid" and submitted to the Wayne County Board of Education at the above address no later than 2:00 p.m. on Thursday, March 7, 2024, to be considered. No late bids will be accepted. The bids will then be opened and presented to the school board for approval at the March 14 meeting. The Wayne County Board of Education reserves the right to reject any and all bids. If you have any questions, please contact Ryan Keaton at (931)722-3548.

Specifications are as follows:

- Lawn care, including mowing, weed-eating, etc., shall be provided as needed. It is expected every two weeks but may require more frequent care during rainy weather and less during dry weather. Principals may request additional care for events (e.g., graduation).
- Mowing is not to be done during regular school hours.
- The contract, once approved, will begin approximately April 14, 2024, and end approximately October 31, 2024.
- Bids may be submitted for individual schools, groups of schools, or county-wide.
- The contractor is responsible for any damages to buildings, vehicles, or property that may arise in the performance of contracted duties and must provide proof of liability insurance to cover any damages before starting work.
- The principal of each school will designate the area to be mowed. **Bidders are responsible for inspecting the areas to be mowed before submitting a binding bid. Bids will not be accepted unless accompanied by a signed assurance of inspection by Ryan Keaton or the principal of each school included in the bid.**
- The principal must approve any use of herbicides before use.
- Payment for mowing may be requested every two weeks or monthly. Payment will be made within ten days of request.
- The successful bidders must provide a clear background check before beginning work.

**BID
LAWN CARE
WAYNE COUNTY SCHOOLS**

Deadline for Submission: 2:00 p.m. March 7, 2022

Bids for school(s) without the principal's or Ryan Keaton's signature confirming campus inspection will not be accepted.

I have read the attached specifications and desire to submit bids for lawn care for Wayne County schools as follows:

	Price Per Mowing	Signature of Principal or Ryan Keaton
Collinwood Elementary School	_____	_____
Collinwood Middle School	_____	_____
Collinwood High School	_____	_____
Frank Hughes School in Clifton	_____	_____
Waynesboro Elementary School	_____	_____
Waynesboro Middle School/Central Office	_____	_____
Wayne County High School & Wayne	_____	_____
County Technology Center		
Total for all schools	_____	

Bids should be submitted in a sealed envelope labeled "Lawn Care Bid."

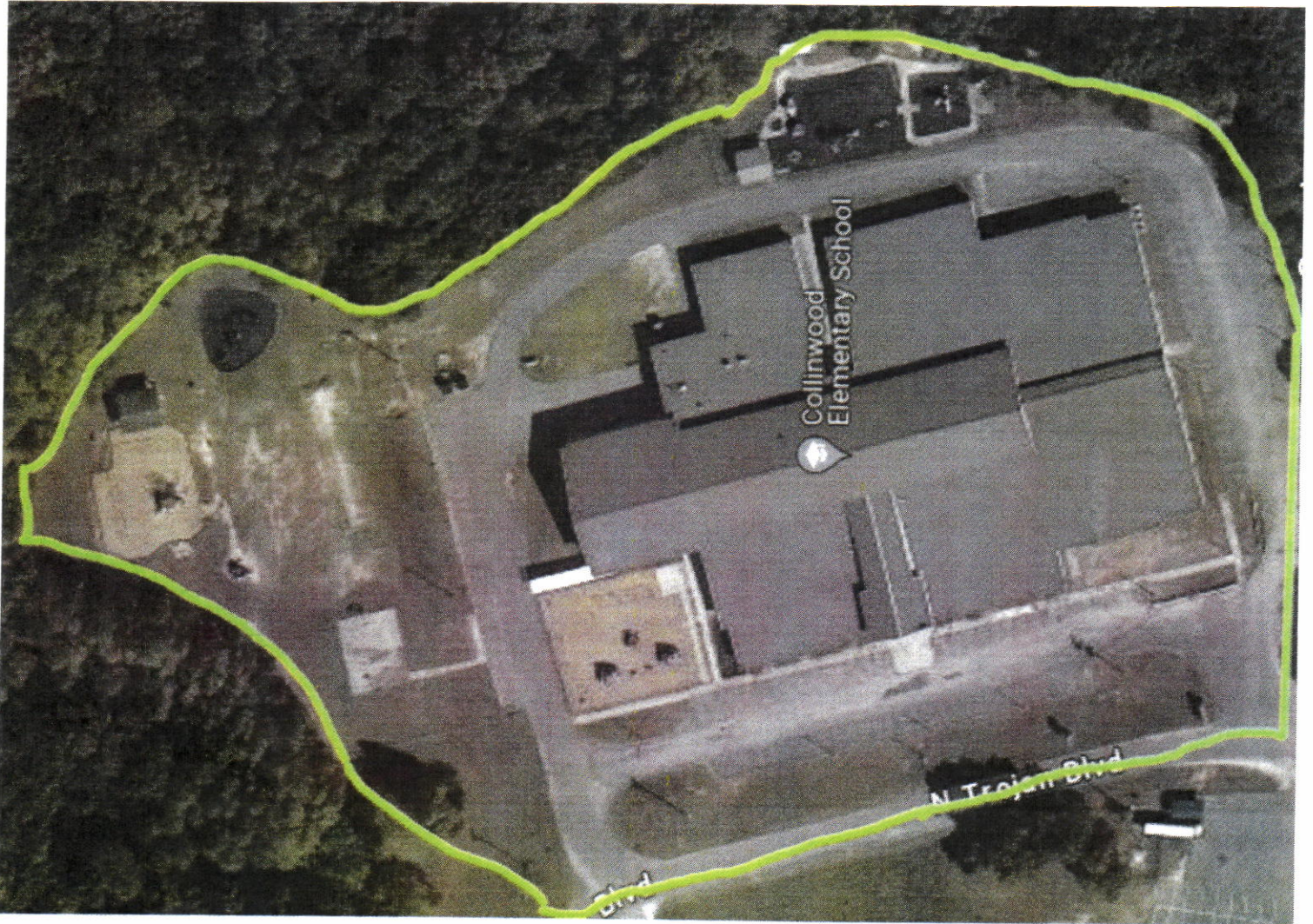
****CHS will mow their campus, but please submit a bid price if we need to contract services.**

Submitted by _____ Date _____

CES Mowing

Note the area around the light poles on the south end of campus

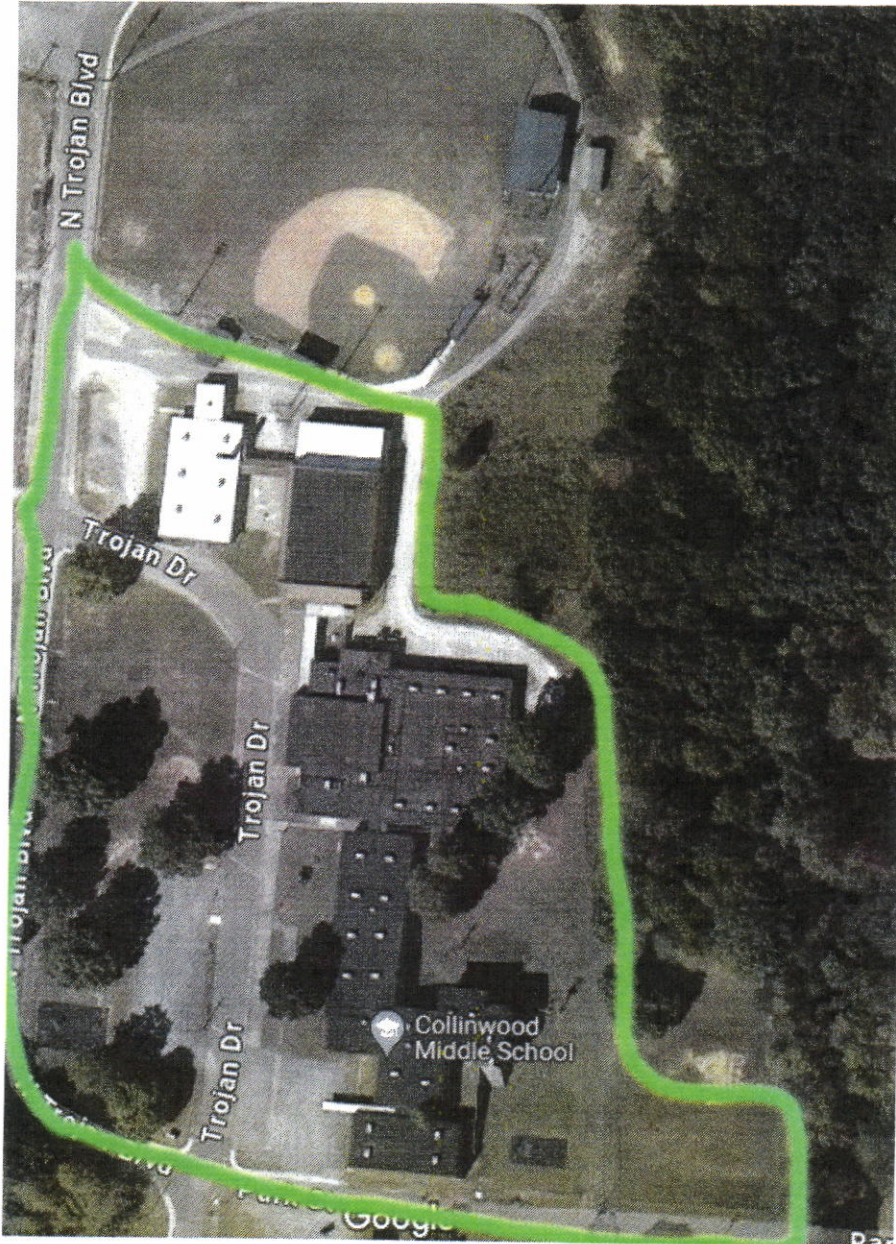
Blowing off sidewalks after mowing and trimming is required.



CMS Mowing

Bid is to include the fence lines and grass that run along school side of Trojan Blvd and Park St.

Bid requires sidewalk areas to be blown after mowing or trimming.

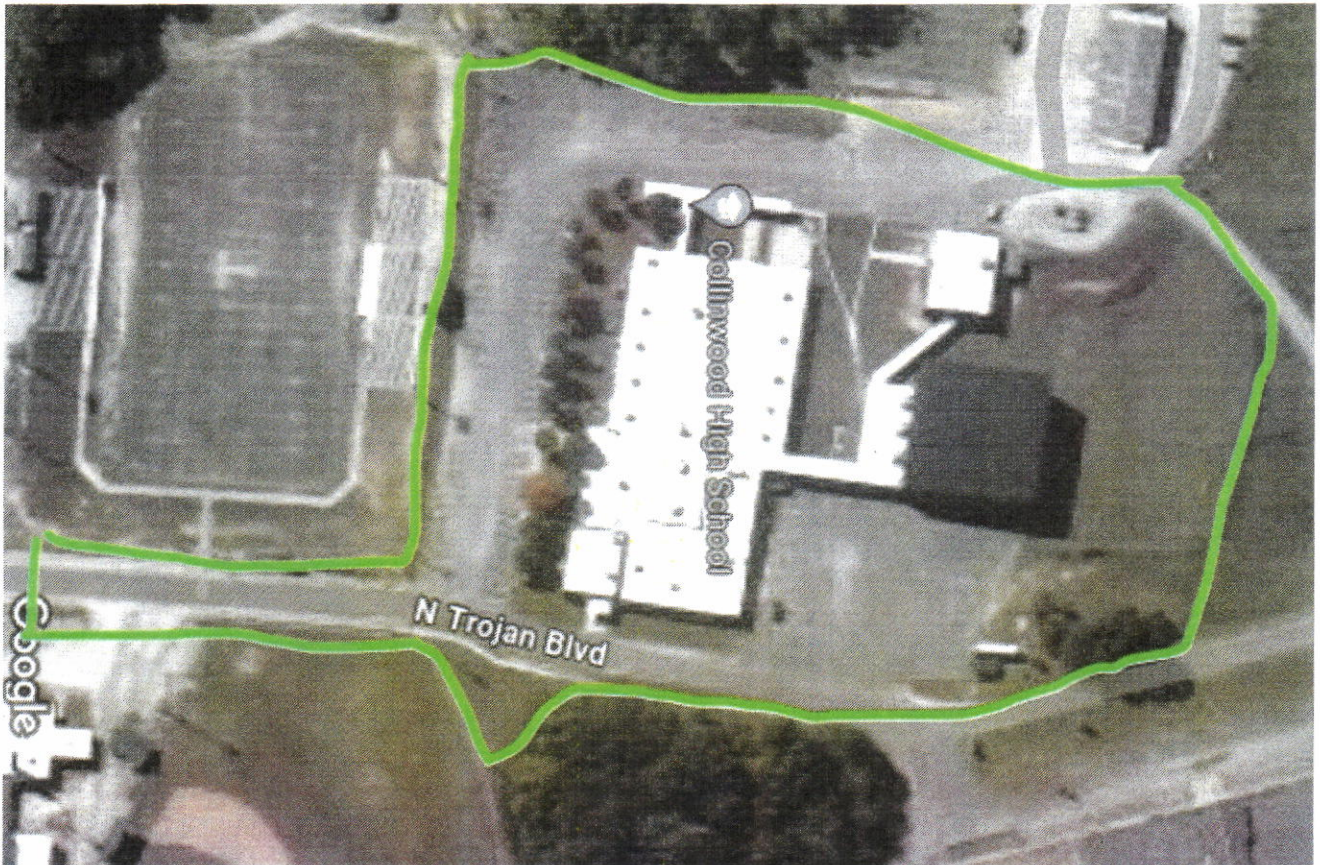


CHS

Please note both sides outside of the fence on Trojan Blvd are part of the bid.

Please note the band field and the area between that field and Trojan Blvd are part of the bid.

Please note the area between the fence and parking lot long the football complex is part of the bid.





FHS Mowing

Note there are several ditch lines and small island areas that require trimming/mowing. Please have the principal point out these areas.

WES

Please note the ditch line that runs along Helton Street is part of the bid.

Please note that the playground fence must be maintained on both sides to prevent the fence from becoming entangled with weeds.



Wayne Co Board and WMS

The area around the wood and wire fence behind the board must be trimmed.

The entry way to the football field and the field itself must be maintained at the current mowed boundaries.



WCHS & WCTC Mowing

Bid is to include the fence line and area along Green River Drive.

Bid is to include area noted behind band hall and around softball field.

Blowing off sidewalks after mowing and trimming is required.

