



DirecTec LLC
155 Gilbert Hollow Rd
Hollsopple, PA 15935
(814)703-8334



Portage Area School District
Attn: Mr. Ryan Clouse
84 Mountain Ave
Portage, PA 15946

PROPOSAL

Replacement
Paging System 2025

SUBMISSION DATE

May 5, 2025



PROPOSAL DETAILS

Proposal Description

DirecTec, LLC is pleased to submit this proposal for the Portage Area School Paging system replacement

Qualifications

DirecTec, LLC is continually proven to be an industry leader for high quality, guaranteed products, and exceptional service in the following ways:

- DirecTec LLC and several technicians holds the following certifications from Carehawk:
- We have provided fire and security services to **over 50 school districts** in Pennsylvania.
- Our lead technicians have **over 25 years of experience** in the low voltage electronics industry.
- We work with the leading equipment manufacturing brands to provide our clients with **high end products** at low cost.
- We are a **locally owned, small business** and will meet your service needs immediately and without the corporate hassle.



Proposal Solution

To control overall costs a Hybrid IP system has been chosen to provide a Paging and Mass Notification System. This selection will allow us to keep some of the existing infrastructure and equipment while enhancing the overall functionality of the system by adding new clocks to corridors and common areas. These clocks will provide additional functionality by using a high-resolution screen and color changing lights. This will give the school that ability to deliver audio and visual messaging at a time where every second counts

Carehawk CH2000

128 end points

Spotlight

Control of everyday and emergency communications

Elementary School

- 64 channels of analog communications to interface with existing speakers
- 4 paging gateways for connection to amplified circuits
- 1, 4 channel Atlas IED amplifier
- 3 speakers and amplifiers for Gymnasium
- 3 speakers and amplifiers for Auditorium
- 3 master handsets

High School

- 64 channels of analog communications to interface with existing speakers
- 4 paging gateways for connection to amplified circuits
- 1, 4 channel Atlas IED amplifier
- 3 speakers and amplifiers for Gymnasium
- 3 speakers and amplifiers for Auditorium
- 3 master handsets

DirecTec will provide the cabling and drop installations for all new displays

Switches and patch panels will be provided by the School District.



Expected Results

We expect our proposal satisfies the needs for Portage Area School District. We will work with staff to ensure they are fully trained on the new system and satisfied with the outcome.

Conclusion

We look forward to working with the Portage Area School District. We are confident that we can meet the requirements, challenges, and deliver an effective product that will not let you down.

If you have any questions on this proposal, feel free to contact Eli Gearhart at your convenience by email at egearhart@directecllc.com or by phone at (814)703-8334 or directly at (814)254-9828.

Thank you for your consideration.

Eli Gearhart
DirecTec LLC
Owner

Attachments

QT-004705



QUOTE

Quote# QT-004705

DirectTec LLC

155 Gilbert Hollow Rd.
Hollsopple Pennsylvania 15935
814-703-8334

Bill To

Portage Area School District

84 mountain ave
Portage
15946 Pa

Quote Date : 05.05.2025

Expiry Date : 05.26.2025

Reference# : Paging System Costars
#534104

Sales person : Eli Gearhart

#	Item & Description	Qty	Rate	Discount	Amount
1	CH2000IP IP Communicaton Server (Computer/Software) - (SPOTLIGHT-CH2000IP - must be purchased for each server)	1.00	13,348.5625	15.00%	11,346.28
2	SPOTLIGHT-CH2000IP License for Spotlight communication dashboard based on an interactive floor plan for control of everyday and emergency communications (CH2000IP) (only one copy per site required)	1.00	5,250.00	15.00%	4,462.50
3	ADMIN7 Administrative Phone for CH2000IP System	6.00	1,262.1875	15.00%	6,437.16
4	DPA602 AtlasIED DPA602 600W Networkable Multi- Channel Power Amplifier with Optional Dante Network Audio	2.00 Each	1,365.525	0.00	2,731.05
5	GW2WIP2 Audio Gateway, Requires one PoE connection	8.00 Each	333.375	15.00%	2,266.95
6	GPIO-8I-8O Ethernet GPIO Module 8 In 8 Out	2.00	881.125	15.00%	1,497.91
7	SS32IP-KIT IP Switching Security Card with 32 analog 4-wire circuits, includes (2) GW2WIP2 Gateways	4.00 Each	4,550.00	15.00%	15,470.00
8	CLKMSL10D 10" LCD Clock, Dual Display Unit - Side mount on wall or Ceiling Mount, Requires one PoE+ connection (Can be used on CH1000 as well)	23.00 Each	1,904.00	15.00%	37,223.20
9	CLKMSL10 10" LCD Clock, Single Display Unit - Wall Mount. Requires one PoE+ connection (Can be used on CH1000 as well)	19.00 Each	1,092.00	15.00%	17,635.80

#	Item & Description	Qty	Rate	Discount	Amount
10	CLKMSL10-SPK 10" LCD Clock, Single Display Unit with Internal 4" Speaker and Microphone - Wall Mount, Requires one PoE+ connection	2.00 Each	1,275.3125	15.00%	2,168.04
11	CLKMSL22A 22" LCD Clock Message Display (Can be used on CH1000 as well)	8.00 Each	1,744.3125	15.00%	11,861.32
12	CLKMSL22A-CAGE Protective enclosure for 22" LCD Clock Message Display	4.00 Each	181.5625	15.00%	617.31
13	GBT-12v60w 802.3bt PoE++ to 12V Splitter with 60W Output	8.00 Each	112.4875	0.00	899.90
14	BT-1-55V60W-IN Gigabit PoE++ (802.3bt) Dual Signature Injector with 55 Volt 60 Watt Output for Indoor without Surge Protection	8.00 Each	81.2375	0.00	649.90
15	SM63T-WH 6.5"2-way Weather-resistant Loudspeaker System With 70.7V/100V - 32W Transformer, White	12.00 Each	299.1875	0.00	3,590.25
16	PA60G 60W Single Channel Power Amplifier with Global Power Supply	4.00 Each	393.7375	0.00	1,574.95
17	Cat 6 plenum Cat 6 plenum	11.00 Each	424.0625	0.00	4,664.69
18	16-2 OAS 16-2 shielded OAS SOL Red Int 250'	1.00 Each	313.375	0.00	313.38
19	Prevailing Wage Labor	1.00 Each	69,750.00	0.00	69,750.00
20	Misc Materials	1.00	3,450.00	0.00	3,450.00
21	SMT1500RM2UC APC by Schneider Electric Smart-UPS 1500VA LCD RM 2U 120V with SmartConnect - 2U Rack- mountable - 3 Hour Recharge - 120 V AC Input - 120 V AC, 110 V AC, 127 V AC Output WITH SMARTCONNECT	1.00 Each	1,099.7875	0.00	1,099.79
22	SMT750RM2UC Smart-UPS 750VA RM 2U 120V with SmartConnect	1.00 Each	773.75	0.00	773.75
23	0E-C6PP24 CAT6 PATCH PANEL 24 PORT	5.00 Each	75.7375	0.00	378.69
24	Patch Cable Cat 5 Patch cable 3-9 ft	60.00 Each	2.4875	0.00	149.25

#	Item & Description	Qty	Rate	Discount	Amount
25	SG2428P TP-Link TL-SG2428P JetStream 28-Port Gigabit Smart Switch with 24-Port PoE+	2.00 Each	349.95	0.00	699.90
				Sub Total	201,711.97
				Total	\$201,711.97

Notes

- DirecTec LLC to provide materials and installation to overhaul the districts paging systems.
- A single server will be installed to handle both schools.
- Corridor and common area displays will be installed per provided layout.
- Both auditoriums and gyms will have 3 cabinet speakers installed in each location. An amplifier will be interfaced to a display to drive speakers.
- 6 admin phones are provided 2 for each office and 1 to install in an alternate location as a backup
- School to provide extended wood trim for the HS auditorium display
- All existing wire and speakers to be reused and connected to new amplifiers and paging system.
- existing racks to be reused
- a new ups is included for the server
- network switches to be provided by customer
- Wire guards to be installed on gym displays

Looking forward to your business.

Terms & Conditions

PENDING POSSIBLE TARIFFS - The quoted amount does not include any applicable tariffs. If tariffs are imposed on the material cost at the time of DirecTec's purchase of the product, a revision may be issued to reflect the additional expense.

Product availability - Company shall not be responsible to Customer or any other party for its failure to fill accepted orders, or for its delay in filling accepted orders, when such failure or delay is due to product shortages or due to a cause beyond Company's reasonable control.

Limitation of Liability - It is understood and agreed by the parties hereto that Company or its agents is not an insurer and insurance coverage, if any, shall be obtained by the Customer. Amounts payable to Company are based upon the value of the services and are unrelated to the value of the Customer's property and the property of others located on the premises. Customer agrees to look exclusively to the Customer's insurer to recover for injuries or damages in the event of any loss or injury and that Customer releases and waives all right of recovery against Company arising by way of subrogation. Customer acknowledges and agrees that the type and location of equipment installed by Company has been selected by Customer after considering and having knowledge of the various factors, as constituting alarm equipment of Customer's own selection and that the same has not been installed by Company as constituting and alarm system which Company designed. Company makes no representations or warranties that the equipment installed will afford Customer any given degree of security under given conditions or standards established by Customer in the selection of equipment installed hereunder. Company makes no guaranty or Warranty, including any implied warranty of merchantability or fitness for a particular purpose that equipment or services supplied by Company will detect or avert occurrences or the consequences therefrom that the equipment or service was designed to detect or avert.

CUSTOMER ACKNOWLEDGES THAT IT IS IMPRACTICAL AND EXTREMELY DIFFICULT TO QUANTIFY ACTUAL DAMAGES, IF ANY, WHICH MAY PROXIMATELY RESULT FROM A FAILURE OF COMPANY TO PERFORM ANY OF ITS OBLIGATIONS OR A FAILURE OF THE SYSTEM TO OPERATE BECAUSE OF, AMONG OTHER THINGS, THE UNCERTAINTY OF THE VALUE OF PROPERTY, RESPONSE TIME OF POLICE OR FIRE DEPARTMENT, INABILITY TO ASCERTAIN WHAT PORTION, IF ANY, OF ANY LOSS WOULD BE PROXIMATELY CAUSED BY COMPANY OR ITS AGENTS FAILURE TO PERFORM ANY OF ITS OBLIGATIONS OR FAILURE OF ITS EQUIPMENT TO OPERATE. COMPANY SHALL NOT BE LIABLE FOR ANY DAMAGE, LOSS, INJURY, OR ANY OTHER CLAIM ARISING FROM ANY SERVICING, ALTERATIONS, MODIFICATIONS, CHANGES, OR MOVEMENTS OF THE COVERED SYSTEM(S) OR ANY OF ITS COMPONENT PARTS BY THE CUSTOMER OR ANY THIRD PARTY. COMPANY SHALL NOT BE LIABLE FOR INDIRECT, INCIDENTAL OR CONSEQUENTIAL DAMAGES OF ANY KIND, INCLUDING BUT NOT LIMITED TO DAMAGES ARISING FROM THE USE, LOSS OF THE USE, PERFORMANCE, OR FAILURE OF THE COVERED SYSTEM(S) TO PERFORM.

Limited Warranty - COMPANY WARRANTS THAT ITS WORKMANSHIP AND MATERIAL FURNISHED UNDER THIS SERVICE REQUEST WILL BE FREE FROM DEFECTS FOR A PERIOD OF NINETY (90) DAYS FROM THE DATE OF FURNISHING.

Indemnity - Customer agrees to indemnify, hold harmless and defend Company, its employees, and agents against any and all losses, damages, costs, and expenses including reasonable defense costs arising from any and all third party claims for personal injury, death, property damage or economic loss. Company reserves the right to select counsel to represent it in any such action.

Equipment Disconnections - This represents Company's notice to you that the systems installed/serviced by the Company that are temporarily or permanently disconnected are no longer in service, thus, cannot detect, perform and/or report occurrences or transmit signals.

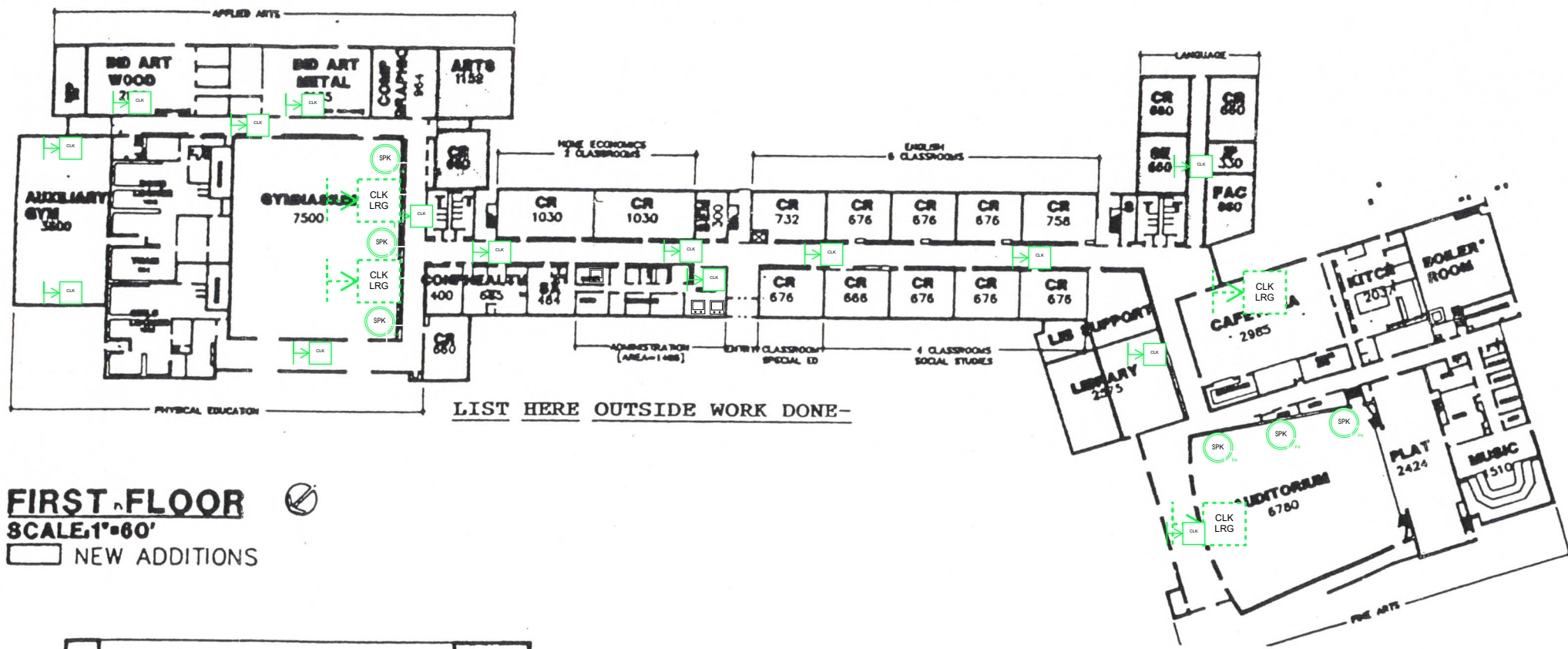
Additional Terms - Requests for service and repairs shall be done between 7:00 AM and 5:00 PM from Monday through Friday, excluding holidays. Company shall not be responsible for failure to perform services due to causes beyond its control, including but not limited to restrictions imposed by governmental agencies, material shortages, work stoppages, fires, or severe weather.



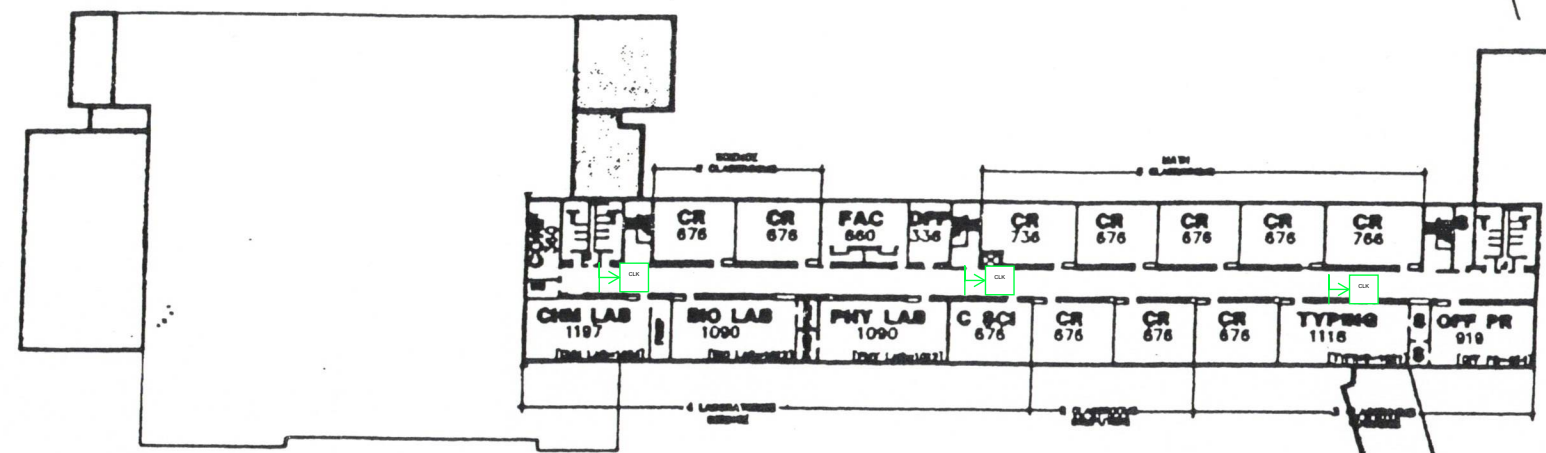
FOREMAN BASHFORD
ARCHITECTS ENGINEERS

**PRELIMINARY STUDY FOR:
ADDITIONS AND RENOVATIONS
PORTAGE AREA**

1ST FLOOR
SCALE: 1"=60'



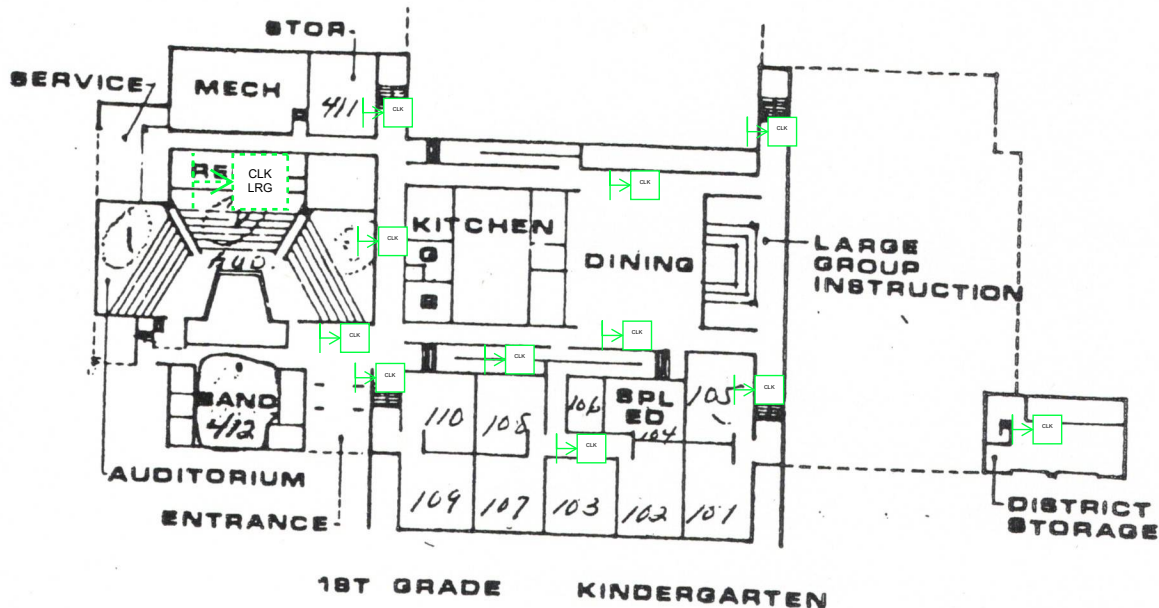
FIRST FLOOR
SCALE: 1"=60'
NEW ADDITIONS



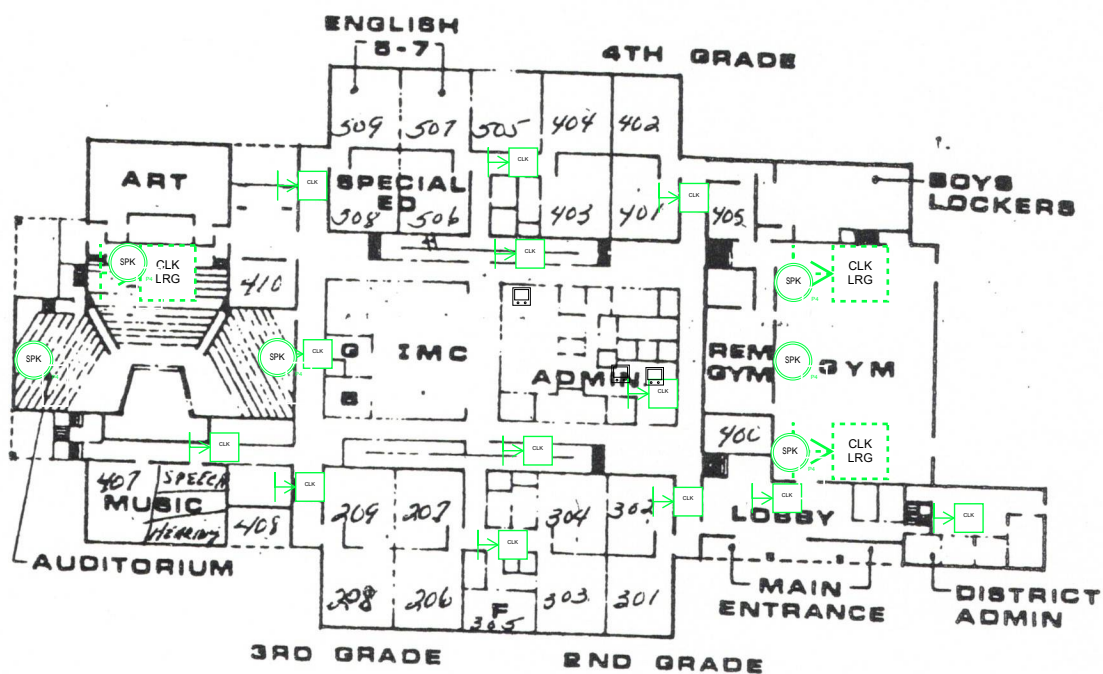
SECOND FLOOR
SCALE: 1"=60'

NAME

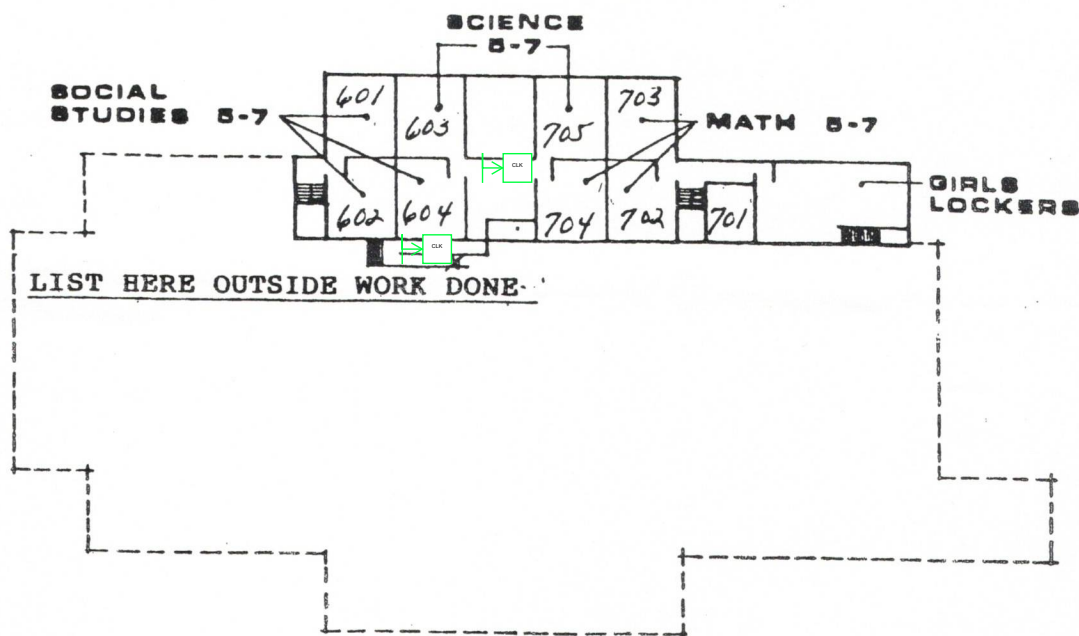
NAME _____



LEVELS I - II



LEVELS III - IV - V



LEVEL VI