



Get Pumped Up for Success!

Grades 3–5

What We Will Cover



Things to Know



Tips



What to Expect



Let's Remember

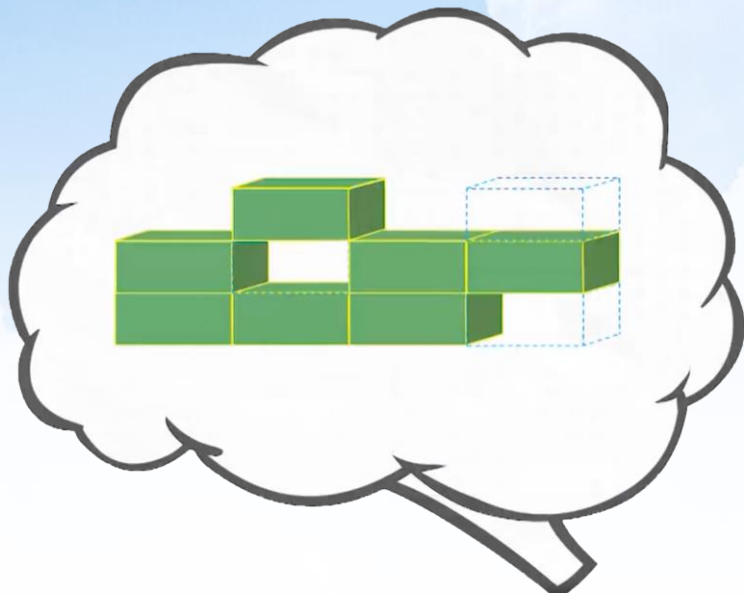


Introduction Videos

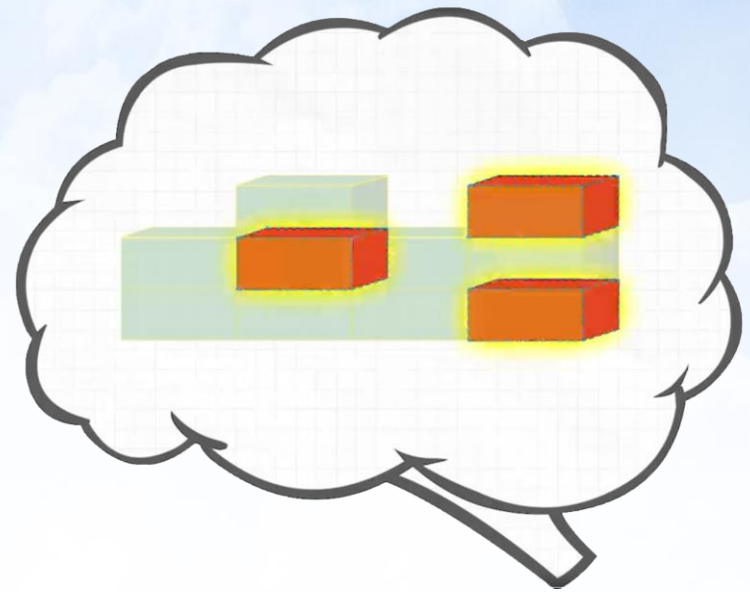
A cartoon illustration of a woman with dark hair in a ponytail, wearing a grey sweater over a black and white striped shirt. She has a thoughtful expression, with her hand to her chin. A large speech bubble points to her, containing the text:

***“Why are we taking the
i-Ready Diagnostic?”***

Remember, the Diagnostic Is Important Because It Helps You and Your Teachers . . .



Understand what you
already know



and what you
need to learn

Remember, the Diagnostic Is Important Because It Helps You and Your Teachers . . .

Make the best use of
your learning time



Remember, the Diagnostic Is Important Because It Helps You and Your Teachers . . .

Show what you know!

Try your best so you can show what you've learned.



Online Lessons

The screenshot displays the i-Ready online learning interface on a laptop screen. The interface is set for a user named Kristin with 400 coins. It features a navigation bar with 'Reading' and 'Math' tabs, and a 'Family Center' link. The main content is divided into two sections: 'Teacher Assigned' and 'My Path'. The 'Teacher Assigned' section has two lessons: 'Number and Operations' (due today, in progress) and 'Geometry' (due 3/11/20). The 'My Path' section shows the 'Next Lesson' as 'Algebra and Algebraic Thinking' (in progress), which includes a table of equivalent ratios and an image of a blender.

| Strawberries | Smoothies |
|--------------|-----------|
| 5 | 2 |
| 10 | 4 |
| 15 | 6 |
| 20 | 8 |
| 25 | 10 |

Algebra and Algebraic Thinking
Equivalent Ratios
In Progress

If you try your best on the Diagnostic, lessons will **match what you need to learn.**

How does the Diagnostic work?

i-Ready is an **adaptive test**. This means the questions change based on your answers.

Some questions will be . . .



What should you do?



- Remember **this test is adaptive!** You should try your best, but know that you'll get questions you don't know how to answer.

What should you do?



- **Try your best.**
Do not rush, but do not spend too much time on any one question.

What should you do?

- You will see questions **you won't know how to answer** because you haven't learned them yet. That is okay! **Choose the best answer** and move on.



Too Hard

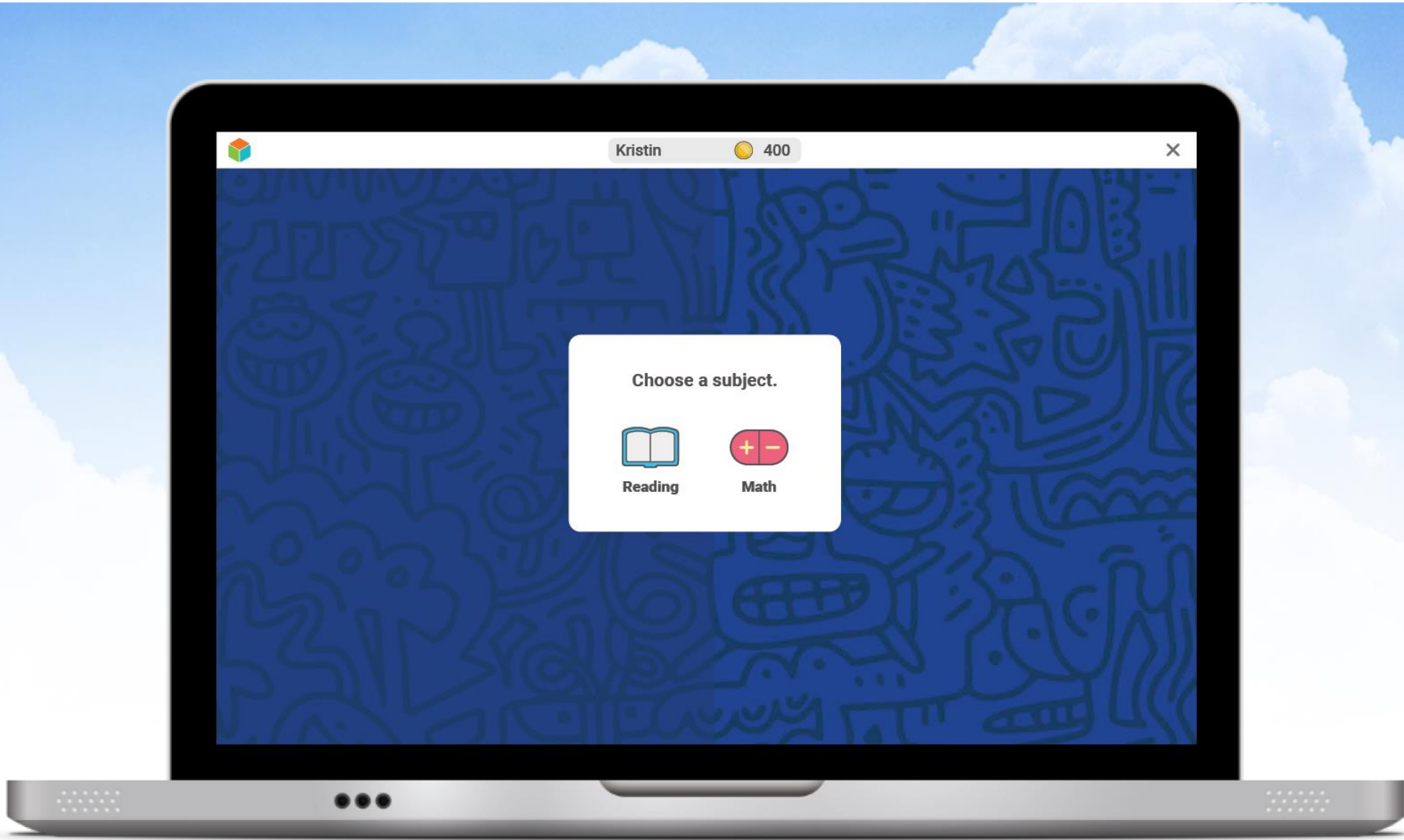


Too Easy

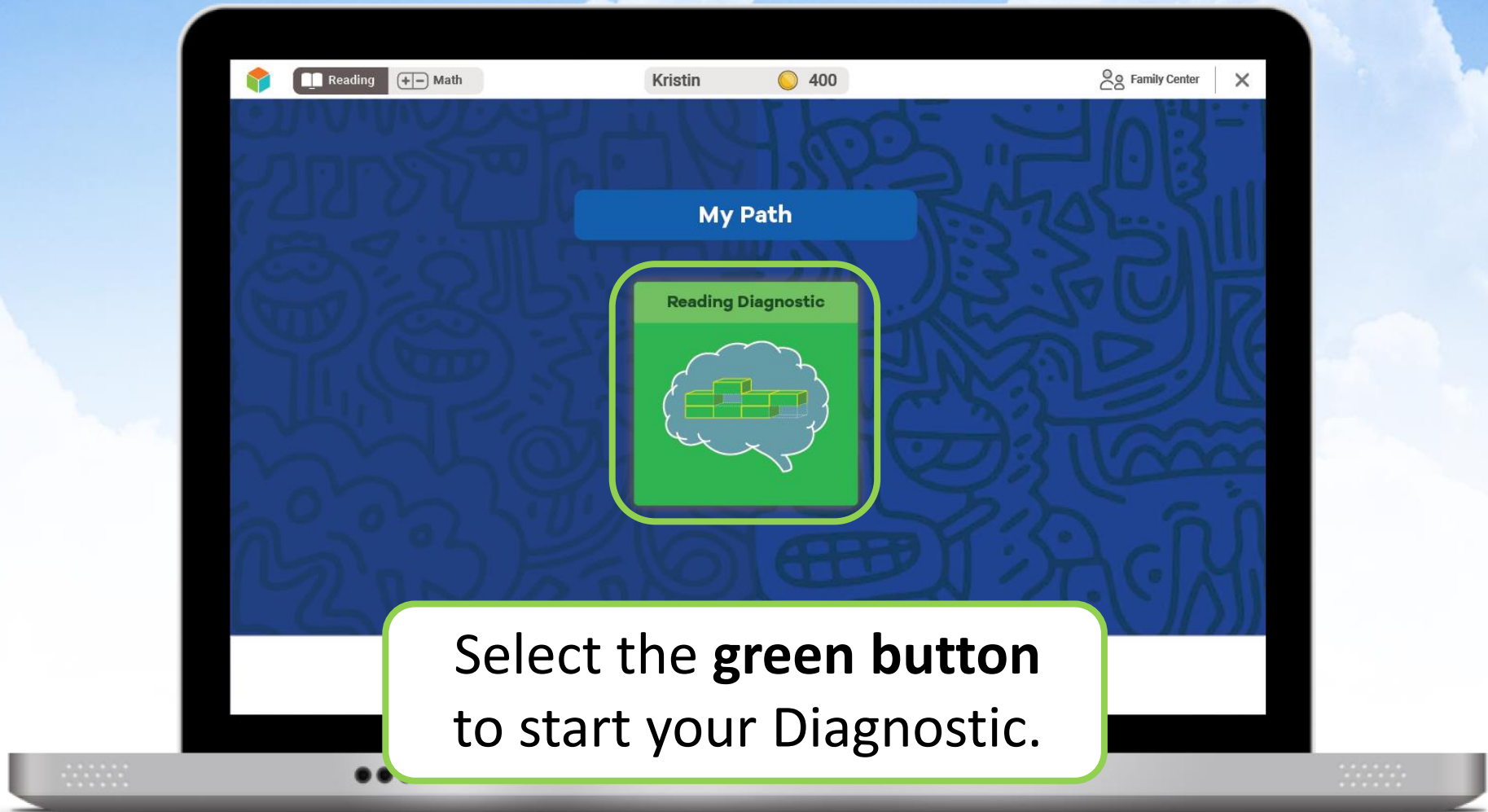


Just Right

Once you log in, you will see this:



Next, you will see a page like this:



Next, you will:



Watch a video.

Next, you will:



Watch a video.

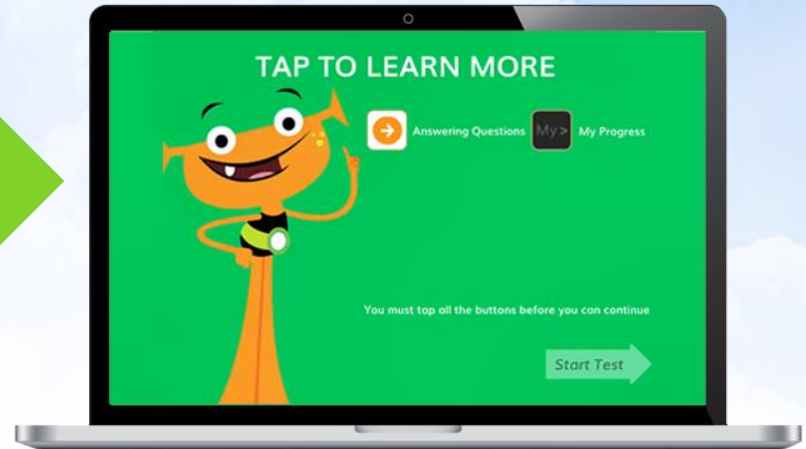


**Click on each button
to watch a video
about each tool.**

Next, you will:



Watch a video.

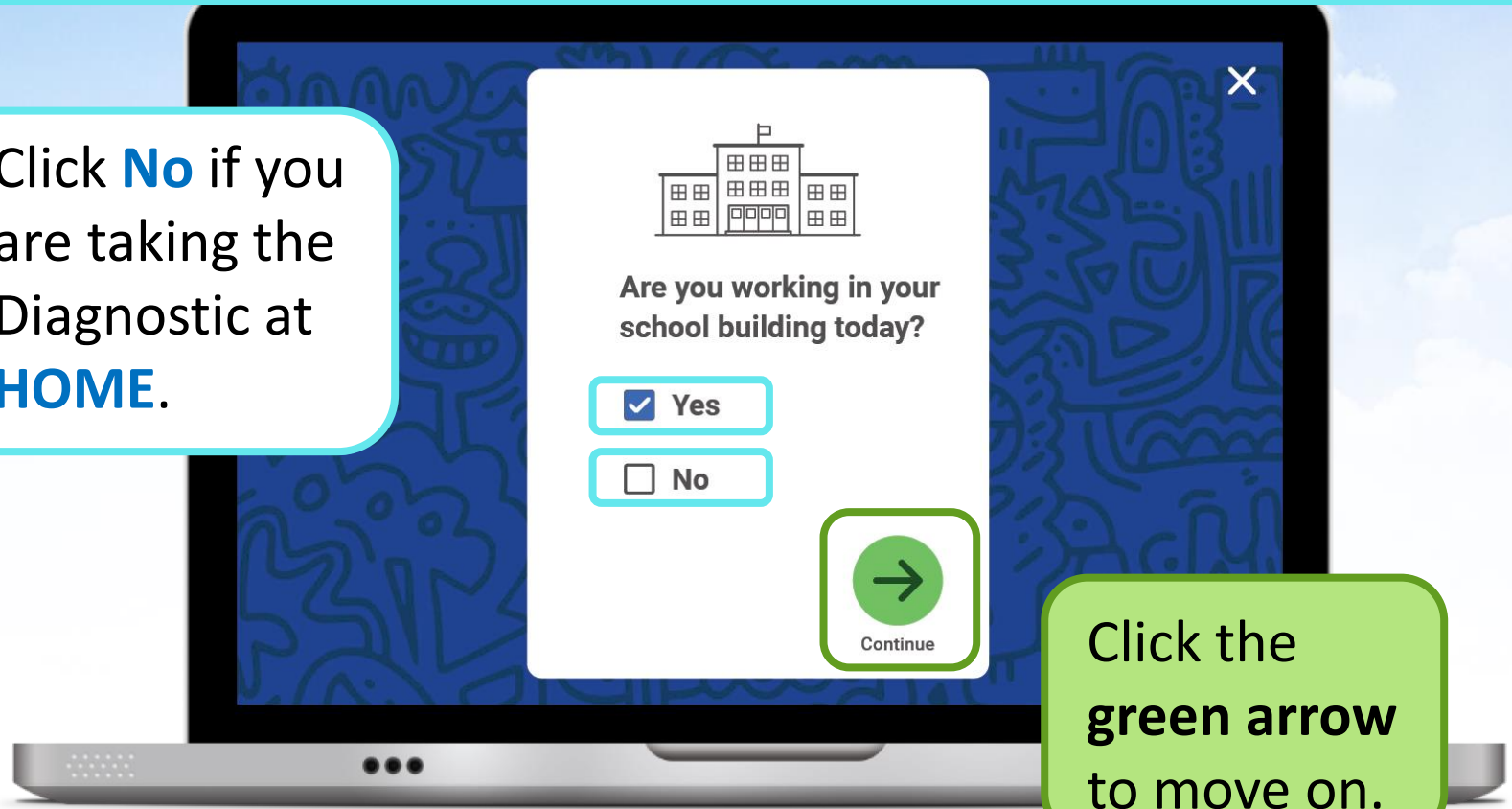


You must **click on all of them** before you can **press start**.

Student Survey

Once you **START** or **RESUME** your Diagnostic, you will see this question pop up on your screen:

Click **No** if you are taking the Diagnostic at **HOME**.



Click the **green arrow** to move on.

Introductory Demo Videos

You will get to try this on your own!

MATH



READING



Helpful Tips



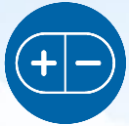
Take your time and **do not rush**.



Read each question and answer choice **carefully**.



If you get a question you have not learned yet, **try your best**. Like school, your teacher and family cannot help!



For Math—Show your work on **paper** for every problem.



For Reading—Read each passage carefully, and **reread** the passage when necessary.



Check your work before going to the next question.

Our Plan

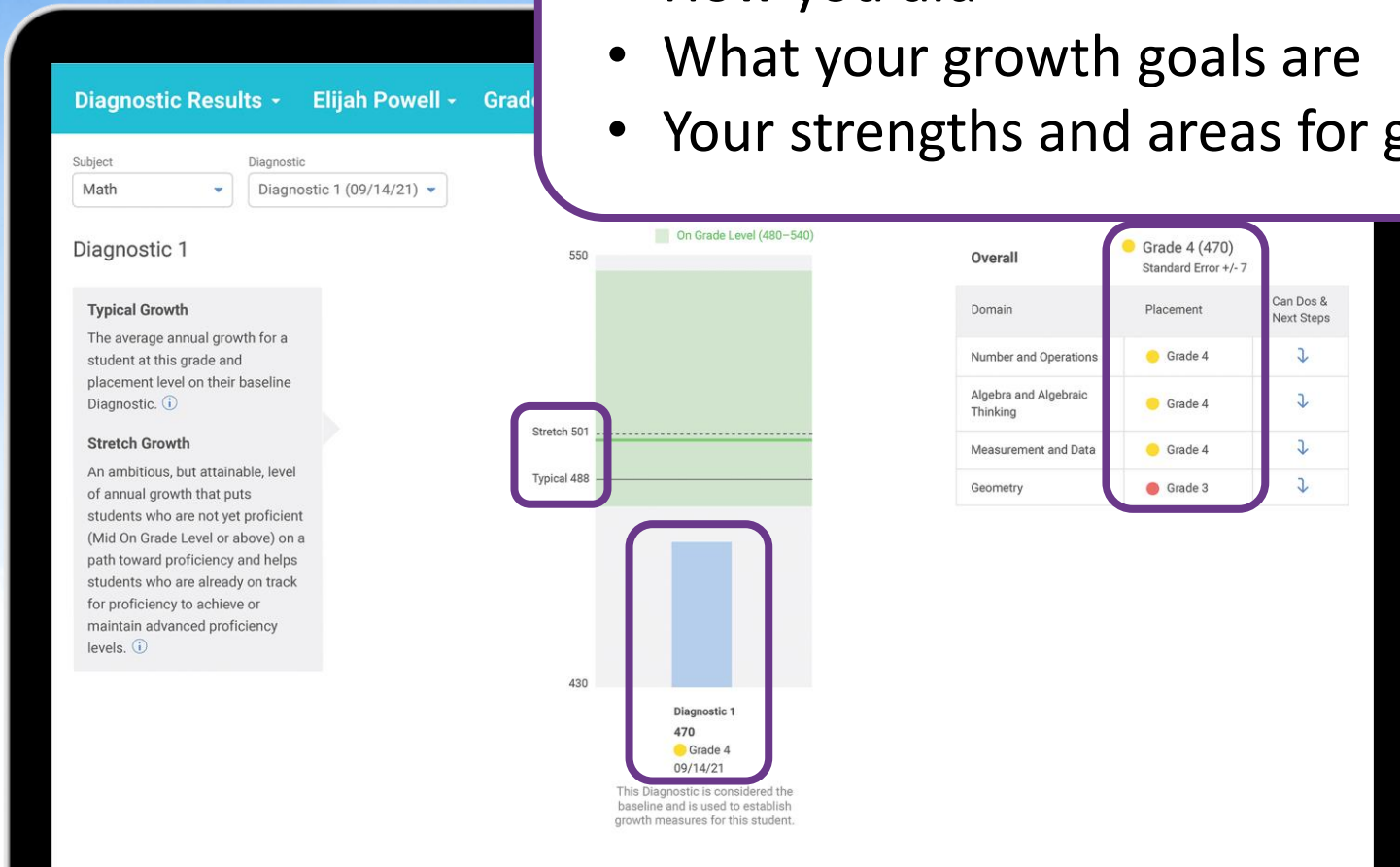
After the Diagnostic, *i-Ready* creates a special report for you and your family.



Our Plan

We can talk about:

- How you did
- What your growth goals are
- Your strengths and areas for growth



After the Diagnostic, we can review your results and goals.

Our Incentives

- Class incentives
- Individual incentives



Reflections

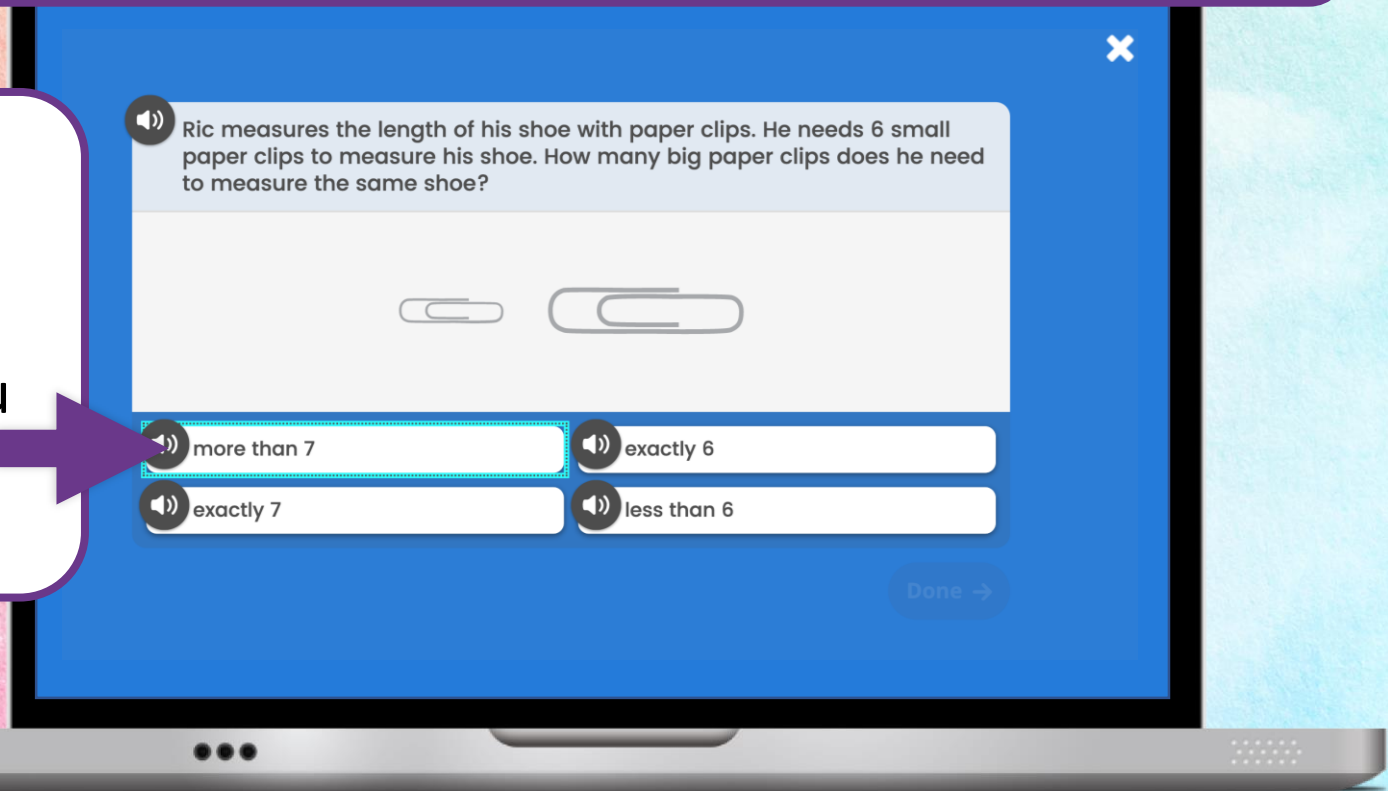
- What strategies do you plan to use on your *i-Ready Diagnostic*?
- What do you want to remember?



Keyboard Navigation

How: Using specific keyboard selections:
Tab, Shift + Tab, and Enter or Space

A box will appear showing where you are on the screen.



Audio Support

How: Using the speaker icon, wherever it appears



Josh

Josh plays the piano. He hits the keys with his fingers.



Sue

Sue plays the guitar. She plucks the strings with her fingers.



What do Josh and Sue BOTH use to play?



They both use fingers.



They both use strings.



They both use keys.

Done →

Closed Captioning

How: Using the CC box in the bottom left corner of the screen

Clicking the CC box allows you to view the text on screen.



The Diagnostic will feel challenging.

My Progress >