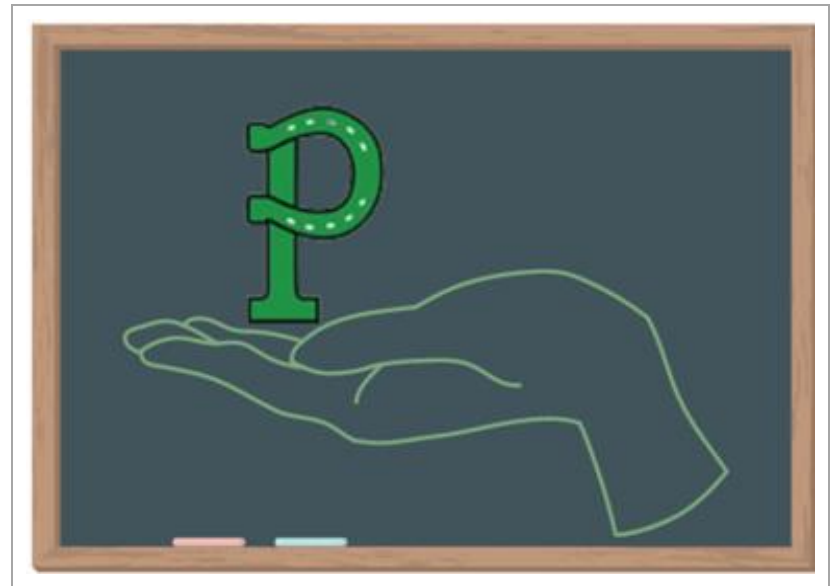


Cambria County Crisis 988
Crisis Hotline 1-800-273-8255
Text HELP to 714714 or 988
LGTBQ support group (Victim Services) 814-288-4961

Community Resource Directory



**PORTAGE AREA SCHOOL
DISTRICT**



Portage Area School District
84 Mountain Avenue
Portage, PA 15946

Assistance with Basic Needs

Cambria County Assistance Office	814-533-2491
Dorothy Day (emergency food/clothing)	814-472-2877
Family Center	814-536-1555
Johnstown Free Medical Clinic	814-534-6264
Salvation Army Free Healthcare	814-262-8500
Mom's House (clothing, cribs for kids)	814-535-4848
Salvation Army (food, clothing, medical/ dental)	814-539-3110
St. Vincent de Paul (food bank, soup kitchen, furniture)	814-539-4627
United Way	814-535-2563
Portage Area Food Pantry	814-495-4280
South Fork Food Pantry	814-322-0873
Forrest Hills Food Pantry	814-487-7654
Produce to the People www.pittsburghfoodbank.org/producetopeople	
Martha and Mary House (homeless shelter)	814-254-4413
Helping Hands Rescue Mission (shelter)	814-736-9286
ACRP Beds for kids	814-536-6141

Transportation Assistance

Med Van (Community Action)	814-948-6170
Health Ride	814-948-6510

Counseling/ Therapy Services

ACRP	814-445-1717
Pediatric Care Specialists Behavioral Health	814-266-8840
Nulton Diagnostics	814-410-2106
Cambria County BH/ID/EI	814-535-8531
Assist, Inc.	814-536-7313
Children's Behavioral Health	814-288-5900
Footsteps Psychological	814-266-5238
Northwestern Human Services	814-472-6105
Catholic Social Services	814-535-6538
Conemaugh Counseling	814-534-1095
Family Social Services	814-536-1555
New Day, Inc.	814-535-8202
Westmont Family Ministries	814-536-0798
The Healing Patch (grief)	1-800-445-6262

Domestic Violence

Woman’s Help Center	814-536-5361
Victim Services	814-288-4961
IFS Batterer’s Intervention Group	814-291-4669

Housing Assistance

Johnstown Housing Authority	814-535-7771
Section 8	814-535-7771
Cambria County Homeless Assistance Program	814-534-2658
Breaking the Barriers	814-421-7311
Cherry Ridge (Northern Cambria)	814-619-0188
Luxor Gardens (Stoney creek Twp.)	814-288-3505
Aspen Woods (Richland)	814-266-2011
Patton Terrace Apartments	814-674-5363
Stadium Terrace (Windber)	814-467-6157
Haida Village (Hastings)	814-247-9284
Beautyline Apartments (Forest Hills)	814-487-9803
Bloomfield Apartments (Richland)	814-266-9696
Habitat for Humanity	814-539-2884

First Lutheran Church	717-870-4757
Penelec (PCAP)	888-282-6816
LIHEAP (heating assistance)	814-533-2491
Emergency Rental Assistance Program	814-539-8440

Employment Assistance

Cambria County Career Link	814-533-2493
Community Action Partnership	814-536-9031
Family Center (GED Program)	814-536-1555
Goodwill Industries (workforce Development)	814-536-3536
New Choices/New Options	814-866-6551
Hiram G. Andrews (Intellectual Disabilities & Veterans)	814-255-8200
Office of Vocational Rehabilitation	814-255-6771
IU8 Job Coaching	814-940-0223
Sargent’s Personnel Agency	814-536-7877

Child Care Services

Cambria County Child Development	814-472-6341
Head Start	814-536-9031
Learning Lamp Free Pre-K	814-262-0732

Parenting Instruction

ACRP Family Based	814-536-6141
Women's Help Center	814-536-5361
New Day, Inc.	814-535-8202
Teen Parenting Program	814-533-5538
Independent Family Services	814-625-7297
Nulton Diagnostics Family Based	814-262-0025
Adelphoi Multisystemic Therapy	724-804-7000
Community Action Early Head start	814-536-9031

Pregnancy Services

Woman care Clinic	814-534-9230
Birthright of Johnstown, Inc.	814-792-2749
Planned Parenthood	814-535-5545
Precious Life	814-269-4391
Gabriel Project	814-254-4411
Elect Teen Parenting	814-946-8489

Drug and Alcohol Services

Cambria County Drug and Alcohol	814-536-5388
Skills of Central PA	814-713-8289
Suboxone Services of Cambria County	814-241-3649
SKS Suboxone Treatment	814-266-1106
Family Medical Center (Suboxone)	814-534-9106
Axiom Family Counseling	814-846-5971
Meshach Recovery Center	814-266-7688
Cove Forge Behavioral Health Services	1-800-873-2131
New Visions	814-534-1627
Alcoholics Anonymous	814-533-5907
Narcotics Anonymous	1-800-494-3414
Alliance Medical Services	814-269-4700
Dolminis in Altoona	814-204-0059
Twin Lakes Center	814-443-3639
New Beginnings at Cove Forge	1-800-873-2131
Penial Drug and Alcohol Residential Center	814-536-2111
Impact Counseling Services	814-695-2200
Independent Family Services	814-262-0007