

--

REVISION TABLE	NUMBER	DATE	REVISED BY	DESCRIPTION

--

**DOW HIGH SCHOOL**  
 3901 N. SAGINAW RD  
 MIDLAND, MI 48640

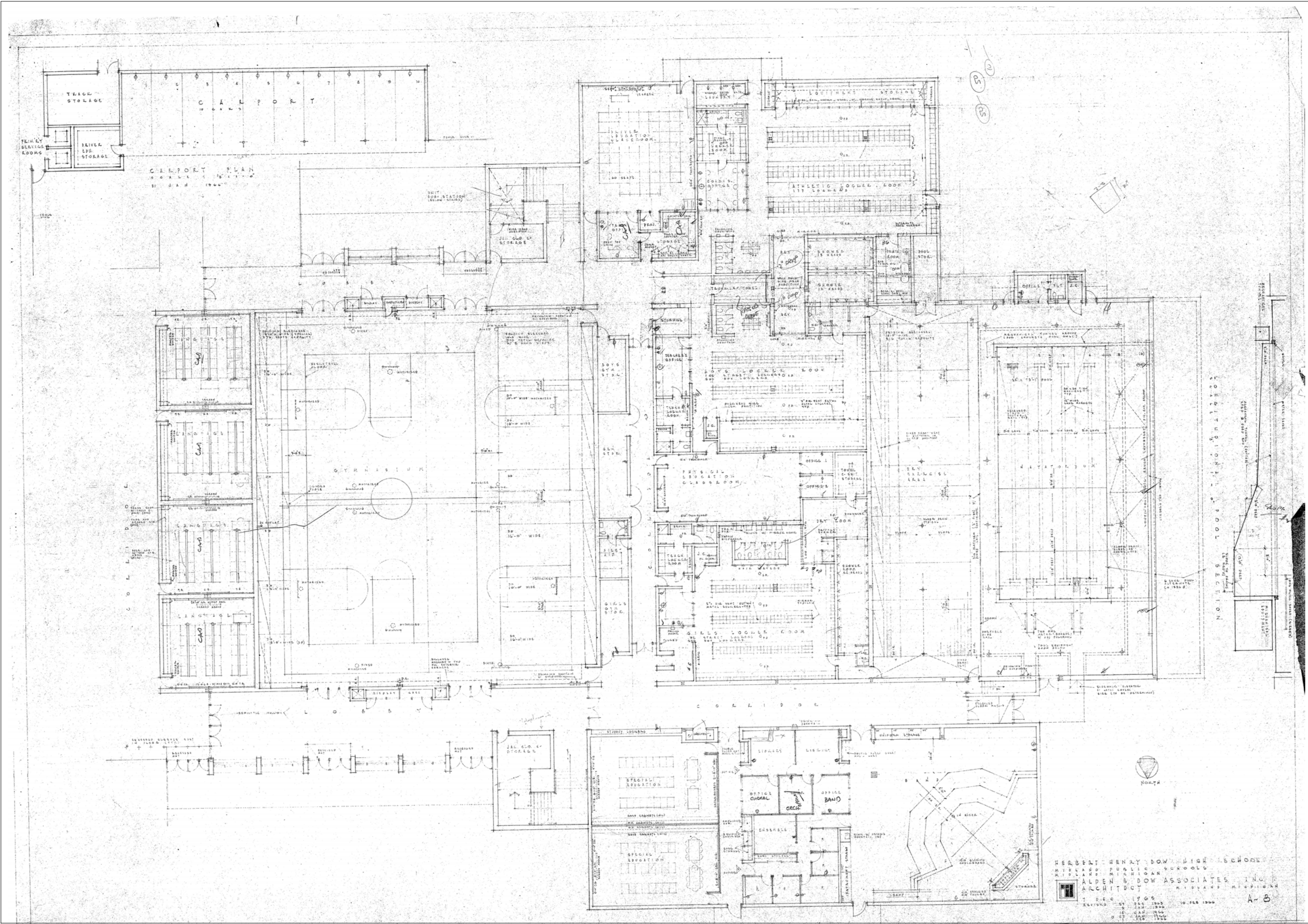
DRAWINGS PROVIDED BY:  
 MIDLAND PUBLIC SCHOOLS  
 FACILITIES DEPARTMENT  
 811 GEORGE ST. MIDLAND

DATE:

2/4/2026

SCALE:

SHEET:



REVISION TABLE	REVISION BY	DESCRIPTION

**DOW HIGH SCHOOL**  
**3901 N. SAGINAW RD**  
**MIDLAND, MI 48640**

DRAWINGS PROVIDED BY:  
**MIDLAND PUBLIC SCHOOLS**  
**FACILITIES DEPARTMENT**  
**811 GEORGE ST. MIDLAND**

DATE:

2/4/2026

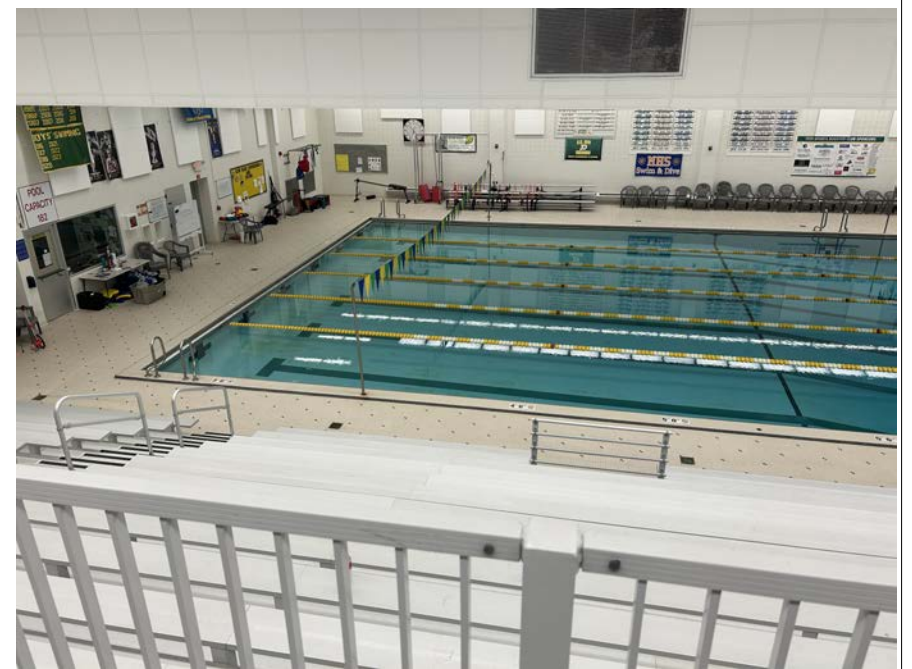
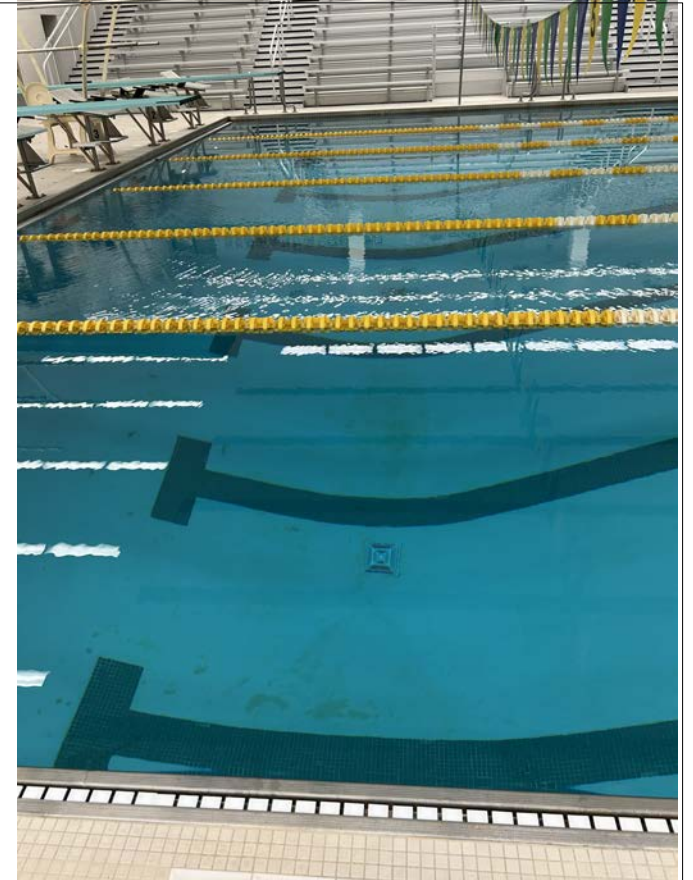
SCALE:

SHEET:

P-1

HERBERT HENRY DOW HIGH SCHOOL  
 MIDLAND PUBLIC SCHOOLS  
 MIDLAND, MICHIGAN  
 ALDEN B. DOW ASSOCIATES, INC.  
 ARCHITECT  
 1 DEC 1965  
 15 JAN 1966  
 16 JAN 1966  
 17 FEB 1966  
 A-B





REVISION TABLE	
NUMBER	DATE

DESCRIPTION

**DOW HIGH SCHOOL**  
 3901 N. SAGINAW RD  
 MIDLAND, MI 48640

DRAWINGS PROVIDED BY:  
 MIDLAND PUBLIC SCHOOLS  
 FACILITIES DEPARTMENT  
 811 GEORGE ST. MIDLAND

DATE:  
 2/4/2026

SCALE:

SHEET: