



**BUNAVOLA**















**THE YEARBOOK STAFF**

**PROUDLY PRESENTS THE**

**1961 BUNAVOLA**







# DEDICATION

We, the student body of Bunkie High School,  
dedicate this the 1961 Bunavola in memory of Mr.  
L. O. Campbell Jr.



# CONTENTS



ADMINISTRATION

FACULTY

SENIORS

JUNIORS

SOPHOMORES

FRESHMEN

ORGANIZATIONS

ATHLETICS

ADVERTISERS





# ADMINISTRATION





Through the doors of the American public school pass the future citizens of our nation. We enter through these doors that we may grow scholastically, socially, physically, spiritually, and increase our understanding of self and of our fellowmen.

After several years of formal education we leave through these same doors to meet the many challenges of adulthood. The trials and problems faced in school become the happy memories in the years ahead.

*C. L. Couvillier*  
Principal



the American  
are citizens of  
gh these doors  
cally, social-  
and increase  
d of our fel-  
rma educa-  
same doors  
es of adult-  
ms faced in  
memories in

William



# FACULTY





RAYMOND  
SABATINI  
English 2, 3, 4



C. L. REID  
Librarian and  
Counselor



MELVIN SHARPE  
Business Education



JAMES MEREDITH  
Science and Biology



MRS. LOIS FISHER  
English 1, 2, 3, 4



FRANK FOREMAN  
Industrial Arts  
P.E. Coach



MRS. CARRIE  
McNUTT  
English 1 and 2



W. A. BRISTER  
Science  
Head Coach



CHARLES FAUST  
Mathematics  
Coach



MRS. FAYE TRUE  
Social Studies



LYNN FOGLEMAN  
Math, P.E. Coach



MRS. LOLA  
ST. ROMAIN  
Home Economics



MALCOLM  
BORDELON  
French I and 2  
Civics, Gen.  
Business



JULIUS GUILLOT  
Band Director



B. G. ST. ROMAIN  
Chemistry,  
Agriculture



MISS MARGARET LaCAZE  
Civics, P.E., Girls' Coach

Not shown: William Fisher  
Science, Physics, Biology, Math





MRS. LOIS FISHER  
English 1, 2, 3, 4



Mrs. Matthew Lutz, Bunkie High School Secretary



MRS. FAYE TRUE  
Social Studies



Mrs. Knight, Mrs. Gremillion, Mrs. Cottano, Lunchroom Workers

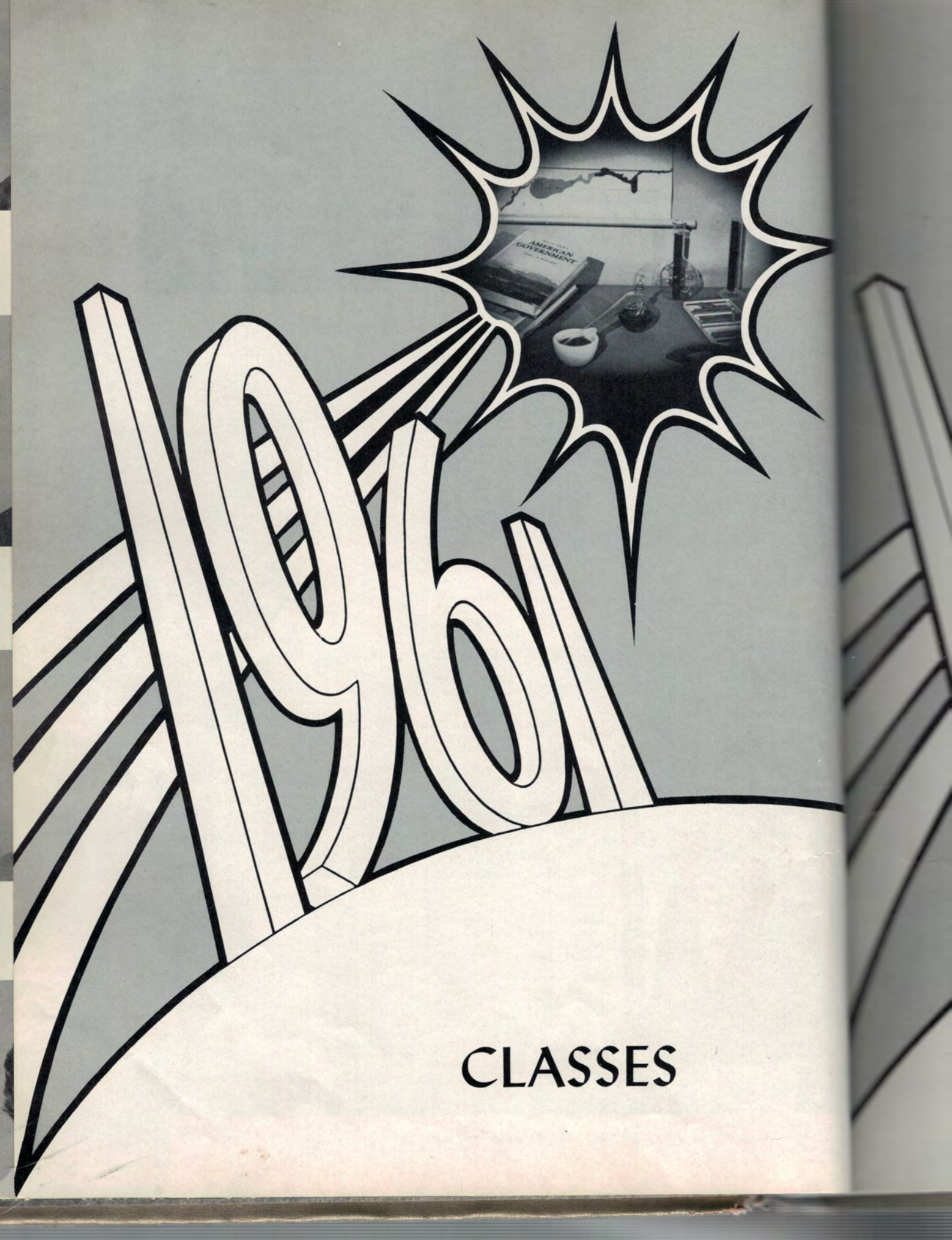


MR. G. ST. ROMAINE  
Chemistry,  
Agriculture



Mr. Roy, Mr. Mayeaux, Custodians





# CLASSES





SENIORS









HARVEY C. ALLUMS  
F.F.A. 1, 2, 3; Officer 4; Junior Deputy 2

A. J. BARONNE  
F.F.A. 1, 2, 3; Officer 4; President 4; Junior Deputy 2; Track 3, 4; Football 4; Winter Carnival Court 4



MARY REBECCA BILES  
F.H.A. 1, 2, 4; F.B.L.A. 3, 4; Junior Deputy 2; Class Officer 1, 2; Cheerleader 3, 4; Favorite 3; Homecoming Court 3; Winter Carnival Court 4

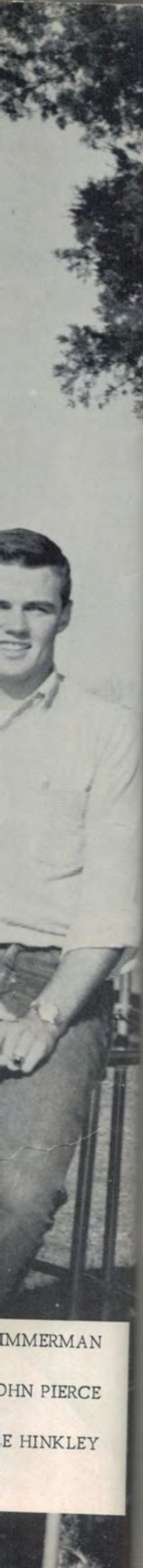
KENNETH JULES BROCATO  
Football 1, 2, 3, 4; F.B.L.A. Officer 3, 4; Basketball 1, 3, 4; Track 3, 4; Junior Deputy 1; "B" Club 2, 3, 4; Who's Who 4

DIANE RUTH BORDELON  
F.F.A. Sweetheart 3; Maid 2; Homecoming Queen 4; F.B.L.A. 2; Officer 3, 4; F.H.A. 3; Officer 4; Cheerleader 4; Booster 2, 3; Band 1; Favorite 3; Class Officer 3, 4; Trumpet Staff 3; Chorus 4; Winter Carnival Queen; St. Council 3; Who's Who 1, 2, 3

JOHN ANTHONY CERAMI  
Trumpet 2, 3, 4; Class Officer 4; Baccalaureate and Graduation Usher 3; Junior Deputy 2

MARION DIXON CHAPMAN  
Band 1, 2, 3, 4; Officer 4; Band Queen 4; Honor Band 3, 4; Class Officer 3; F.B.L.A. 2; Officer 3; President 4; Winter Carnival Court; Science Club 4; Baccalaureate and Graduation Usher

MICHAEL DAWSON CLARK  
Football 1, 2, 3, 4; Track 3, 4; Class Officer 2, 3; Student Council 2, 3, 4; F.F.A. 1, 2; Officer 3; "B" Club 2, 3, 4; Favorite 3; Who's Who 1, 2, 3; Trumpet Staff 3, 4



MMERMAN  
HN PIERCE  
E HINKLEY





MARIE MAYDELL COURVILLE  
F.H.A. 1, 3, 4; F.B.L.A. 2, 3, 4; Boosters 1, 3, 4;  
Junior Deputy 2

JAMES DAIGREPONT  
Junior Deputy 2



JEANETTE ANN DESHOTEL  
F.H.A. 1, 2, 3, 4; Junior Deputy 2; Usher for Bac-  
calaureate and Graduation; Central and State  
Rally 3

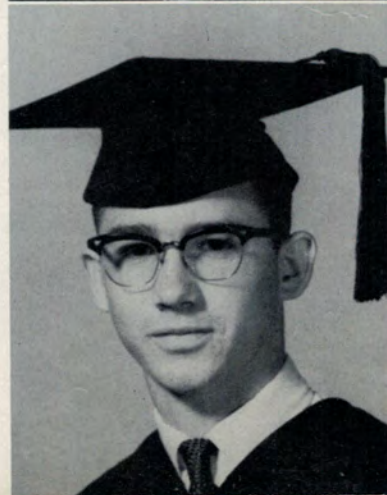
KATHLEEN CAROL DESHOTEL  
F.H.A. 1, 2, 3, 4; Junior Deputy 2

NEWTON ROBERT DIDIER  
F.B.L.A. 3, 4; F.F.A. 1, 2, 3, 4; Parliamentary  
Law Team, F.F.A. Judging Team; Winter Carni-  
val Court

EVELYN JOY DUCOTE  
Transfer from Evergreen 2; F.H.A. 2, 3, 4;  
F.B.L.A. 4; Band 2, 3, 4; Officer 3; Usher at Bac-  
calaureate and Graduation; Junior Deputy 2;  
Winter Carnival Pageant 2; Honor Band 3

TOMMY LEE DUCOTE  
Junior Deputy 2; F.B.L.A. 3

DIANE DUCOTE  
F.H.A. 1; Boosters 1, 2, 3, 4; Rally 3; F.B.L.A.  
3; Junior Deputy 2





LE  
osters 1, 3, 4;

RACHEL ANN EARLES

Class President 3; Central and State Rally 2, 3;  
F.H.A. 3; Officer 4; Trumpet Staff 1, 2; Officer  
3, 4; F.B.L.A. 2, 3, 4; Who's Who 2, 3, 4; Boosters  
1, 2, 3; Officer 4; Booster Queen 4

CHARLES EDWARD EARNEST

Football 1, 2, 3; Tri-Captain 4; Basketball 1, 2, 3,  
4; Track 3, 4; Class President 1; Class Officer 3;  
F.B.L.A. 2; Officer 3, 4; Student Council 4; "B"  
Club 1, 2, 3, 4; Favorite 1, 2, 3; Bunavola Staff 1



sher for Bac-  
and State

VIVIAN JOAN ESCUDE

F.H.A. 1, 4; F.B.L.A. Officer 3; Band 3, 4;  
Boosters 1, 2; Class Officer 3; Safety Conference  
1, 2; Junior Deputy Captain 2



EL  
y 2

CAROL JEAN FRANKS

F.H.A. 1, 2, 3, 4; F.B.L.A. 3, 4; Safety Confer-  
ence 2; Boosters 1, 2, 3, 4; Junior Deputy 2

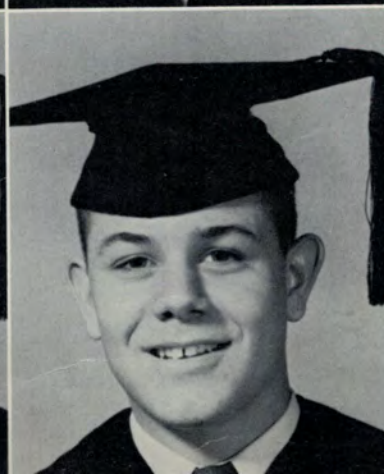


BETTY SUE FRANKS

Cheerleader 1, 2; Student Council 1; Class Officer  
1; F.H.A. 1, 4; F.B.L.A. 2, 3, 4; Boosters 3, 4;  
Homecoming Court 3; Trumpet Staff 3, 4; Who's  
Who 2; Junior Deputy 2

LINDA MARIE GAUTHIER

F.H.A. 1, 2; Officer 3; President 4; F.B.L.A. 3,  
4; Class Officer 3; Basketball Manager 4; Winter  
Carnival Pageant 1, 2; Safety Conference 3



EMMA DALE GOUDEAU

Band 1; Junior Deputy 2; F.H.A. 1, 2; Officer 3,  
4; Basketball 2, 3, 4; F.B.L.A. 3, 4; Winter  
Carnival Court; Central and State Rally 3

GILBERT GUIDRY

F.F.A. 1, 2, 3, 4; Officer 3, 4; Judging Team and  
Parliamentary Law Team 1, 2, 3, 4; Football 1, 2;  
F.B.L.A. 3, 4; Safety Conference 4; Junior  
Deputy 2





E. J. GUZZO  
Junior Deputy 2; Who's Who 1

LINDA MARIE HANSON  
F.H.A. 1, 2, 3; Junior Deputy 2



EDWARD WAYNE HARPER  
Central and State Rally 1, 2, 3, 4; F.B.L.A. 2, 3;  
Trumpet 2, 3; Science Club Officer 4; Junior  
Deputy 2; Usher for Baccalaureate and Graduation;  
Band 1; Who's Who 4

CLARY HIGGINBOTHAM  
Junior Deputy 2; F.F.A. 1, 4

GAYLE WARREN HINCKLEY  
Class Officer 4; F.B.L.A. 3, 4; Officer 4; Track  
1, 2; Football 1, 2, 3; F.F.A. Judging Team 1, 2, 3

MAUDIE MAE HOLSTON  
Central and State Rally 2, 3; F.H.A. 1; Usher for  
Graduation and Baccalaureate; Junior Deputy 2;  
Honor Roll 1, 2, 3

HERBERT JOSEPH JEANSONNE  
Junior Deputy 2; F.B.L.A. 2, 3; "B" Club 3, 4;  
Football 2, 3, 4; Basketball 2, 4; Track 3, 4

LEON JEANSONNE  
Junior Deputy 2; F.F.A. 1, 2; Officer 3, 4





Who 1  
DN  
puty 2

R  
B.L.A. 2, 3;  
4; Junior  
and Graduation;

4

MICHAEL GEORGE JOHNS  
Junior Deputy 2; F.B.L.A. 2, 3, 4; "B" Club 4;  
Football 2, 3, 4; Basketball 2, 4; Track 3

JOYCIE MAE JOHNSON  
F.H.A. 1, 2, 3, 4; Junior Deputy 2; F.B.L.A. 2;  
Boosters 4; F.H.A. Choir 4

EDWARD JUSSSELIN  
Football 1, 2, 3, 4; "B" Club 2, 3, 4; F.F.A. 1, 2,  
3, 4; Officer 3; Winter Carnival Court 4; Who's  
Who 3; Basketball 1, 2, 3, 4; Junior Deputy 2

RONALD CLAYTON KELLER  
Usher Baccalaureate and Graduation; Band 1, 2;  
Basketball 3; Student Council President 4; Junior  
Deputy 2; Rally 3; F.B.L.A. 2; Class Officer 2;  
Pelican Boys' State 3



JAYNE KELLY  
F.B.L.A. 2, 3, 4; Miss F.B.L.A. 3; F.H.A. 2, 3,  
4; Miss Bunkie 3; Booster 2, 3; Who's Who 1, 2, 3;  
Trumpet Staff 3; Winter Carnival Pageant 1, 2, 3;  
Court 4; Junior Deputy 2

OTIS LABORDE  
Junior Deputy 2; F.F.A. 4

OLIVER LAPRAIRIE  
Football 1, 2, 3, 4; Basketball 1, 2, 3, 4; Track 4;  
Football Tri-Captain 4; Junior Deputy 2; Class  
Officer 1, 4; Student Council 2, 4; "B" Club 2, 3,  
4; Favorite 2; Mr. B.H.S. 3; Trumpet Staff 1,  
2, 3; Pelican Boys' State 3; F.H.A. Duke 2

FRANCIS ROBERT LAFLEUR  
Merit Award 2, 3; Trumpet Staff 1, 2, 3, 4;  
F.B.L.A. 2, 3, 4; Junior Deputy 2; Who's Who 2,  
3, 4







WARDELL MARCELLE  
Junior Deputy 2

MARVIN MATHIEU  
Transfer from Evergreen; Junior Deputy 2



MARIE LOUISE MAYEUX  
Boosters 1, 4; Junior Deputy 2; Homecoming  
Court 4; Band Chorus 4

MINERVA ANN MICHOT  
Boosters 1, 2, 3, 4; F.H.A. 1, 2, 3, 4; F.B.L.A. 4;  
Junior Deputy 2

HANSEN MILLIGAN  
Junior Deputy 2; Band 1, 2, 3, 4

RICHARD MILLIGAN  
Junior Deputy 2



STELLA MAE MILLIGAN  
Boosters 3, 4; Junior Deputy 2; F.H.A. 3, 4; Cho-  
rus 4; F.B.L.A. 3

JANET ANN NEWMAN  
Class Officer 1, 2; Booster 1, 2; Officer 3; Cheer-  
leader 4; Student Council 3; F.H.A. 1, 2, 4; Bas-  
ketball 2; Trumpet Staff 1, 2, 3; Editor 4; Central  
and State Rally 2, 4; Safety Conference 2; Pel-  
ican Girls' State 3; Winter Carnival Pageant 1, 2;  
Court 4; Homecoming 3; Who's Who 2, 3, 4;  
Bunavola 3



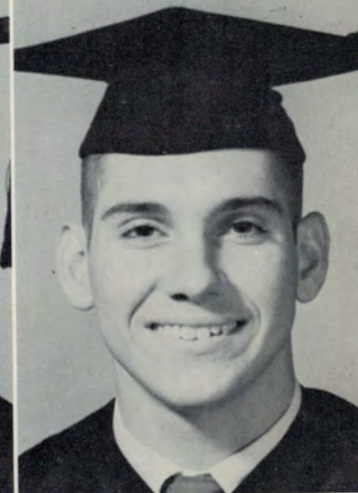


RICHARD OVERBEY  
 Football 1, 2, 3, 4; Tri-Captain 4; Basketball 1,  
 2, 3, 4; "B" Club 2, 3, 4; Junior Deputy 2

VINCENT PALERMO  
 Band 1, 2, 3; Officer 4; F.F.A. 2; Officer 3, 4;  
 F.B.L.A. 2; Junior Deputy 2; National F.F.A.  
 Band; Rally 3, 4

BILL PARKER  
 Band 1, 2, 3, 4; Science Club 4; F.F.A. 1; Bas-  
 ketball 1, 2; Junior Deputy 2; Honor Band 1, 2,  
 3, 4

JOHN WILEY PIERCE  
 "B" Club 3, 4; Football 2, 3, 4; Basketball 1, 2, 3,  
 4; Junior Deputy 2; Trumpet 4; Class Officer 4;  
 F.F.A. 1, 2, 3; Winter Carnival Pageant 1, 3;  
 Court 4; Track 3; Band 1



Deputy 2

coming

F.B.L.A. 4;



*Kelly*  
 FRANK PRUDHOMME  
 Junior Deputy 2; F.F.A. 1, 2, 3, 4; Football Man-  
 ager 2, 3; F.F.A. National Convention 4

KATHLEEN RABALAIS  
 F.H.A. 1, 2, 4; Officer 3; Booster 1, 2, 3; Officer  
 4; Junior Deputy 2; Winter Carnival Pageant 2, 4;  
 Safety Conference 3; Leadership Conference 3;  
 F.B.L.A. 3, 4; Trumpet Staff 4

RICHARD REDMON  
 Junior Deputy 2; FFA 1, 4

PATRICK WILLIAM RYAN  
 Football 1, 2, 3, 4; F.B.L.A. Officer 4; Track 3,  
 4; "B" Club 3, 4; Who's Who 3, 4; Favorite 3;  
 Transfer from Menard; Class Officer 2; Basket-  
 ball 1

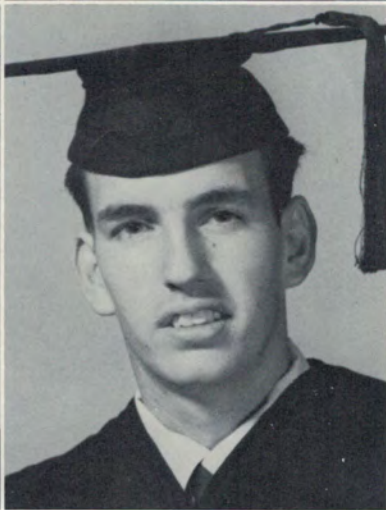
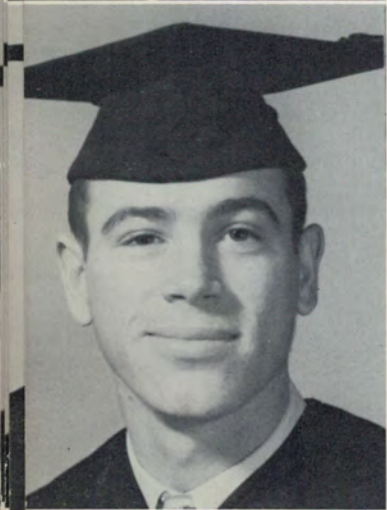






BETTY ARNOLD SAVANT  
F.H.A. 1, 2, 3, 4; Junior Deputy 2; F.H.A. Choir  
4; F.B.L.A. 2

CECIL EARNEST SINGLETON  
Student Council 2, 3, 4; Class Officer 1; President  
2; Booster 1; Officer 2, 3; President 4; Bunavola 3;  
Editor 4; F.H.A. 1, 4; Officer 2; Homecoming  
Court 3, 4; Central and State Rally 1, 2, 3; Peli-  
can Girls' State 3; Who's Who 2, 3; Safety Con-  
ference 2; Merit Award 3; Winter Carnival  
Pageant 1, 2, 3; Court 4



J. D. SOCIA  
Junior Deputy 2; F.F.A. 2, 3, 4

LARRY ST. AMAND  
F.F.A. 2, 3; Junior Deputy 2

DANIEL STAGG  
Student Council 4; F.F.A. 1, 2; Officer 4; Junior  
Deputy 2; Band 1, 2; Basketball 1, 3, 4

MARY ALICE STRAUSS  
F.H.A. 1, 2, 3; Junior Deputy 2; Class Officer 1;  
Booster 1, 2, 3

RANDY THAYER  
Class President 4; F.F.A. 1, 2, 3; Parliamentary  
Law Team 1, 2, 3; Bunavola Staff 2, 3, 4; Junior  
Deputy 2; Band 1; Usher for Baccalaureate and  
Graduation 3; State Rally 1, 2, 3

DAVIS TUBRE  
Junior Deputy 2; F.F.A. 1, 2, 3; Officer 4; Judg-  
ing Team 1, 2, 3, 4; Football 1, 2, 3, 4; "B" Club 4





NT  
F. H. A. Choir

TON  
er 1; President  
t 4; Bunavola 3;  
omecoming  
1, 2, 3; Peli-  
Safety Con-  
Carnival

2, 3, 4

ty 2

DIANNE TURNER

Transfer from Evergreen; F. B. L. A. 2, 3, 4; Junior Deputy 2; F. H. A. 1, 4; Choir 4; Booster 4

LLOYD TURNER

Band 1, 2, 3; Officer 4; All-Parish Band 1, 2; Honor Band 3, 4; Central and State Rally 1, 2; Class Officer 2; F. B. L. A. 2, 3; Usher for Baccalaureate and Graduation; Junior Deputy 2

MARTHA TRUMP

Transfer from Evergreen; Junior Deputy 2; F. H. A. 2; Officer 3, 4; Band 2, 3, 4; Trumpet 3; Basketball 2, 3, 4; Winter Carnival Court 4; Homecoming 4; Leadership Conference 4

BUFORD VEILLION

Junior Deputy 2



KAYE WHISMAN

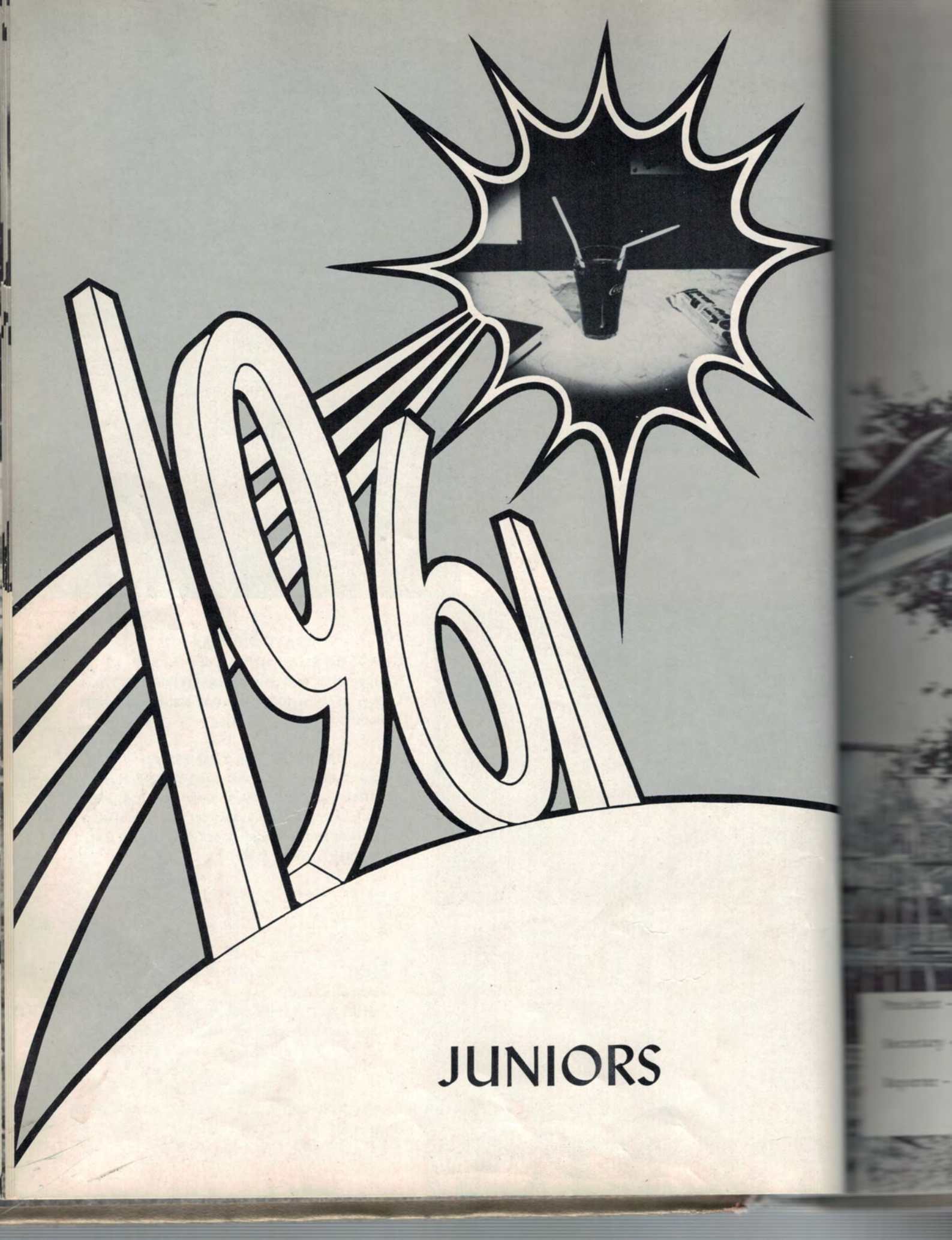
Central and State Rally 2, 3, 4; F. H. A. 1, 2; Trumpet 2, 3, 4; Science Club President 4; Junior Deputy 2; Usher for Graduation and Baccalaureate 3; Booster 4

DIANNE DUNBAR ZIMMERMAN

Band 4; Officer 2, 3; Honor Band 2, 3, ; F. H. A. 4; Officer 1, 2; President 4; Basketball 3, 4; Manager 2; Trumpet Staff 1; Officer 2, 3, 4; Student Council 4; Homecoming 3, 4; Class Officer 2, 4; Pelican Girls' State 4; Rally 2







JUNIORS





## JUNIOR CLASS OFFICERS

President - - - - - DAVID BLALOCK

Vice President - - - - - LYNN WRIGHT

Secretary - - - - - LAURA MEEKER

Treasurer - - - - - WILLIS WOLFF

Reporter - - - - - GREE GRIFFIN

F. B. L. A. Rep. - - - - - CARLTON TOWNSEND

Student Council Rep. - - - - - DAVID TOWNSEND





Beaubouef, Linda  
Billeaud, Catherine  
Blalock, David  
Bordelon, Glynn



Breaux, Larry  
Bubenzer, Cile  
Buckley, Rhoda  
Charrier, Leonard



Clark, Charlotte  
Corrado, Donald  
Dauzat, Ina  
Dickerson, Kenneth

Ducote, Anthony  
Ducote, Harold  
Ducote, Jo Ann  
Dugas, W. J.

Firmin, Carl  
Firmin, Madison  
Frank, Karen  
Franks, Irma Lee

Gauthier, Fred  
Goodell, Sandra  
Griffin, Charles  
Griffin, Gree

Guillot, Mary Maude  
Gullet, David  
Gullet, Margaret Ann  
Himel, Myrtle





Jeansonne, Betty Jean  
 Johnson, Danny  
 Johnson, Patricia  
 Jusselin, Willie Mae

Kent, Michael  
 Knoll, James  
 Lachney, Maretta  
 Leger, Louis

Luke, John  
 Marcelle, Wardell  
 Maxwell, Lila  
 Meeker, Laura



Milligan, Donna  
 Mixon, James  
 Moreau, Leona  
 Murphy, Doris

Patton, Tommy  
 Pollard, Mike  
 Ponthier, Mary Alice  
 Pope, Myrtle

Rabalais, Claire  
 Rachal, Michael  
 Richie, Buddy  
 Rox, Martha

St. Romain, Barbara  
 Sawyer, Enid  
 Slocum, Charles  
 Smith, Gervey





Socia, Charles  
Swann, Jana  
Tanner, Lyle  
Townsend, Albert



Townsend, Carlton  
Townsend, David  
Tubre, Tommy  
Waddell, Clarence



Wallace, Joel  
Wilmoth, Linda Kay  
Wolf, Willis  
Wright, Lynn

Ducote, June







**SOPHOMORES**





## SOPHOMORE CLASS OFFICERS

President - - - - - DONALD TAUZIN

Vice President - - - - - LARRY RICHE

Secretary - - - - - ELIZABETH CHAPMAN

Treasurer - - - - - EILEEN FRANK

Reporter - - - - - NANCY CALAWAY

F.B.L.A. Rep. - - - - - PAUL REED

Student Council Rep. - - - - - DIANE GRIFFIN





Armand, Dale  
 Armand, Bob  
 Aymond, Bonnie  
 Aymond, Dale



Barbat, Paxton  
 Baronne, Mike  
 Baronne, Barbara  
 Blanchard, Chico



Blankenship, Ronald  
 Blankenship, Susan  
 Bordelon, Stephen  
 Bruce, Jimmy



HARRY RICHE  
 EEN FRANK  
 PAUL REED

Brunson, David  
 Buie, Donna Kaye  
 Calaway, Nancy  
 Champagne, Kathleen



Chapman, Elizabeth  
 Chatelain, Mary Lynn  
 Chatelain, Perry  
 Chauvin, Larry



Chenevert, Barbara  
 Chenevert, David  
 Cochrane, Dianne  
 Dauzat, Allen



Delefosse, Margaret  
 Descant, Earl  
 Descant, Marvin  
 Ducote, Anthony

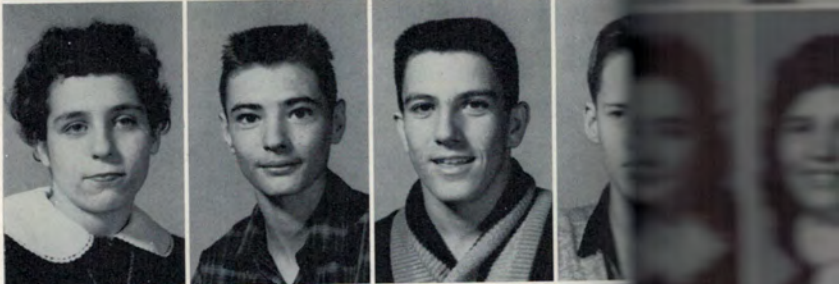




Ellerbee, Ted  
 Elliot, John  
 Frank, Eileen  
 Franks, Shelton



Fowler, Catherine  
 Gauthier, Freddie  
 Gauthier, Larry  
 Goudeau, Wayne



Griffin, Arlen  
 Griffin, Dianne  
 Griffin, Doris  
 Glorioso, Sandra



Guillot, Cliston  
 Guillot, Veronica  
 Hargrave, Sharon  
 Holly, Edward



Jeansonne, Dianne  
 Jeansonne, Harold  
 Johnson, Patricia  
 Jones, Charlotte



Juneau, Shirleen  
 Kelley, Betty Rose  
 Kojis, Van  
 Laborde, Charles



Ladnier, Doris  
 Lejeune, Danny Wayne  
 Lena, Carolyn  
 Lena, Marilyn





Lipona, Anthony  
 Lipoma, Virginia  
 Lutz, Tommy  
 McIntyre, Bobbie Gail

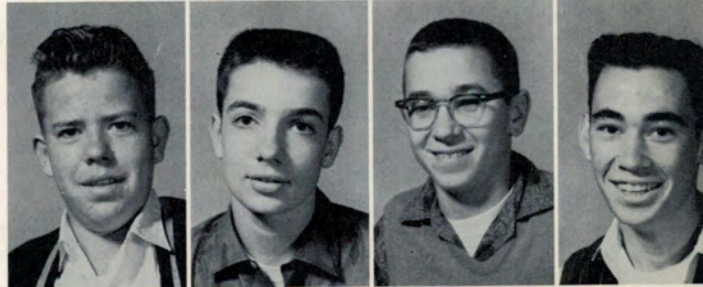
Marcelle, Anna  
 Marcotte, Carol  
 Milligan, Edward  
 Milligan, Mach

Mouliere, Maxine  
 Nettles, Kate  
 Newman, Gayle  
 Normand, Cheryl

Petty, Phyllis  
 Provatt, Jerry  
 Rabalais, Yvonne  
 Redmon, Betty



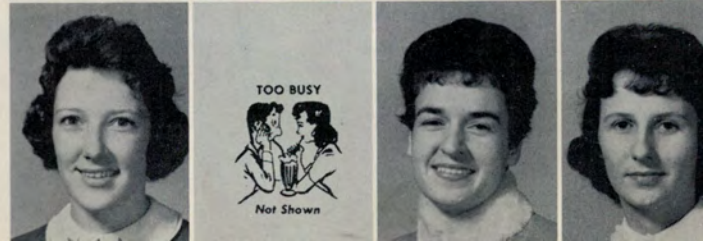
Redmon, Carl  
 Reed, Paul  
 Richie, Larry  
 Spears, Wayne



Strange, Wanda  
 Tassin, Audrey  
 Tauzin, Donald  
 Taylor, Robert



Tubre, Francis  
 Tubre, Harriet  
 Veillion, Brenda  
 Veillion, Deanne





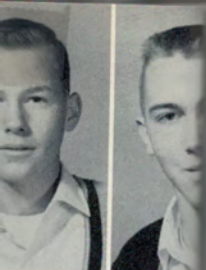
Webb, Harvey  
Webb, Milton  
Whisman, Kirk  
Willians, Joel



Wyble, Sandra







**FRESHMEN**





## FRESHMAN CLASS OFFICERS

President - - - - - MIKE TAUZIN

Vice President - - - - - BEVERLY FRANK

Secretary - - - - - AUDREY RABALAIS

Treasurer - - - - - PAUL PONTHER

Reporter - - - - - JANICE JUSSELIN

F. B. L. A. Rep. - - - - - TUCKER MELANCON

Student Council Rep. - - - - - JOHNNY MEEKER





VERLY FRANK  
UL PONTHER  
R MELANCON



Aguillard, Carol  
Aguillard, Paul  
Allums, Milford  
Adnes, Floyd

Armand, Carol  
Armand, Marilyn  
Aymond, Catherine  
Aymond, Jaunita

Aymond, Joyce  
Barone, Pat  
Beaubouef, Robert  
Boney, Charlene

Boone, Diane  
Bordelon, Janelle  
Brow, Carol  
Bubenzer, Grady

Buckley, Steve  
Callahan, Joe  
Campbell, Jimmie  
Carter, Norma Lee

Cavalier, Gene  
Chappuis, Stephanie  
Chatlain, Brenda  
Cheek, Linda

Chenvert, Joyce  
Daigrepoint, John  
Dauzat, Dorothy  
Dauzat, Lorraine





Descant, Dale  
 Deselle, Tennis  
 Didier, Linda  
 Ducote, Carl Paul



Ducote, Cheryle  
 Ducote, Cleston  
 Ducote, Eugene  
 Ducote, Inez



Ducote, Judy  
 Ducote, Richard  
 Dupree, Ronnie  
 Dupuy, Judith



Earles, Jimmy  
 Eiland, Susan  
 Firmin, Linda  
 Frank, Beverly



Fruge, Johnny  
 Galland, Patsy  
 Gauthier, Dianna  
 Goode, Rickey



Guillory, Elwood  
 Guillory, Judy  
 Guillory, Sandra Lee  
 Hansen, Leona



Harris, Sandra  
 Howard, Bobby Wayne  
 Jeansonne, Dianne  
 Johnson, Denny





Jusselin, Janice  
 Knight, Margaret  
 Knight, Martha  
 Kohler, Glynn



Lachney, Janelle  
 Lachney, Margie  
 La Fleur, Patricia  
 Marks, Jane



Mayeaux, Judy  
 Mayeaux, Clarence  
 Mayeaux, Lorraine  
 McBride, Sharyn

McDonald, Bonnie  
 McQuillion, Clifford  
 McMorris, Elaine  
 Meeker, Johnny



Melancon, Tucker  
 Michot, Kenneth  
 Milligan, Linda  
 Morgan, Ruby



Normand, Judy  
 Oneshia, Floyd  
 Petty, Sandra  
 Polotzola, Beverly



Ponthier, Betty  
 Ponthier, Paul  
 Prudhomme, Carrie Sue  
 Rabalais, Audrey

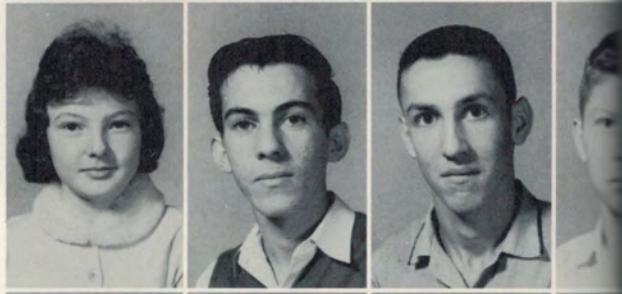




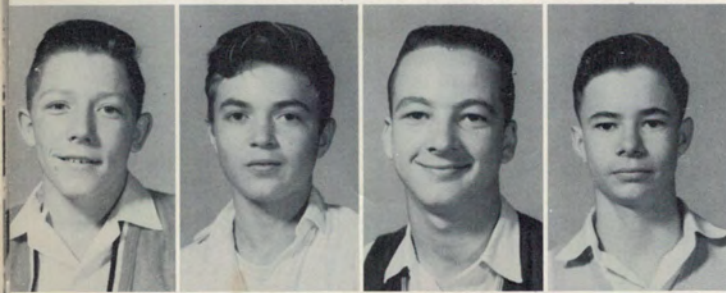
Redmon, Donald  
Redmon, Ruth  
Reynolds, Perry  
Richie, Catherine



Robert, Patricia  
Rozas, Ralieg  
Ryland, Michael  
Sadler, Glenn



Simpson, Wayne  
Spears, Juanita  
Tanner, Michael  
Tauzin, Mike



Tubre, Charles  
Turner, Hilary  
Turner, Raymond  
Turner, Ronald

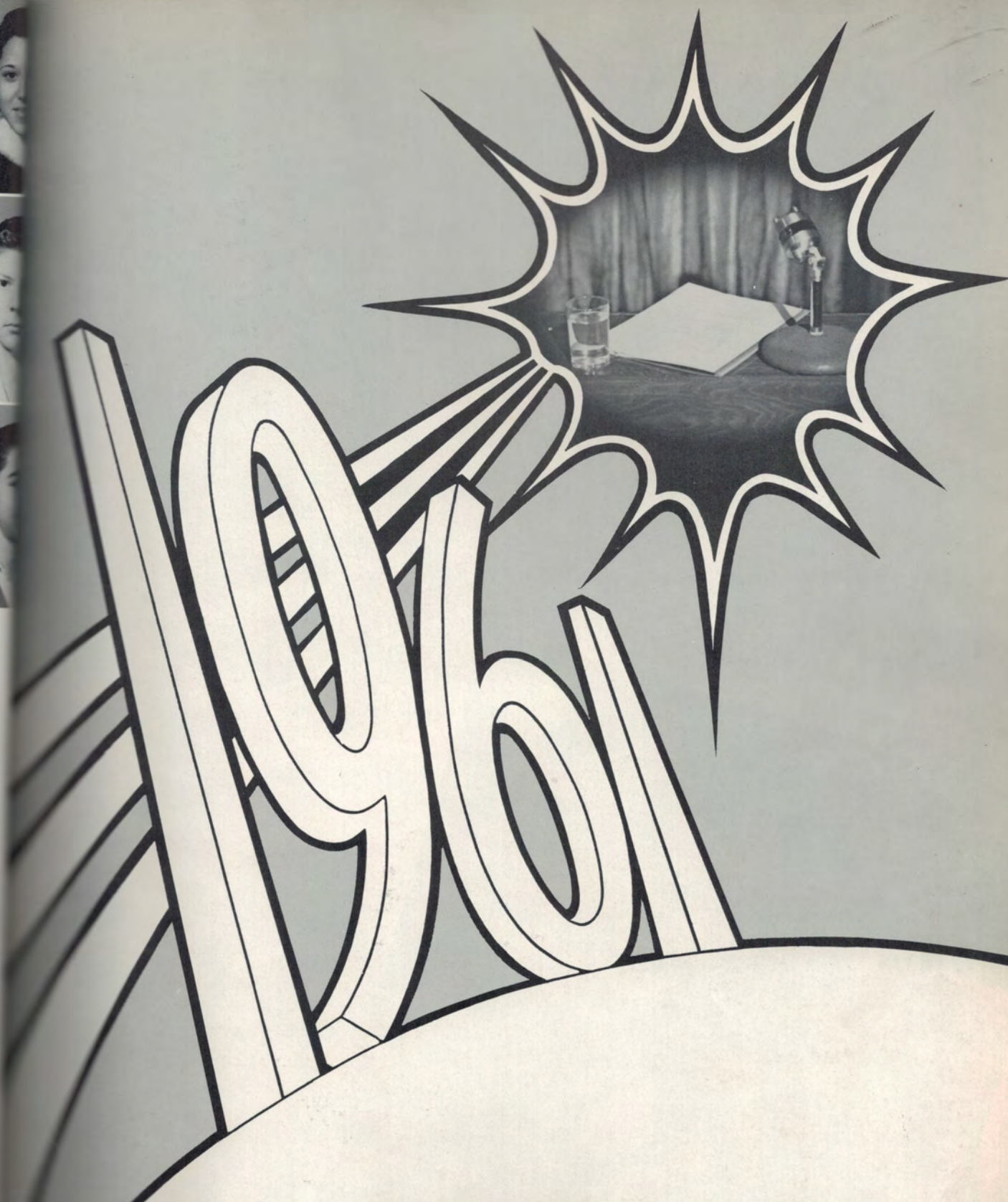


Vanchiere, Rose Mary  
Villemaretta, Dianne  
Walls, Jerry  
Welch, Pricilla



Welch, Robert  
Wilkins, Donna  
Williber, Clyde





# ORGANIZATIONS



# BUNAVOLA STAFF

Editor

CECIL SINGLETON



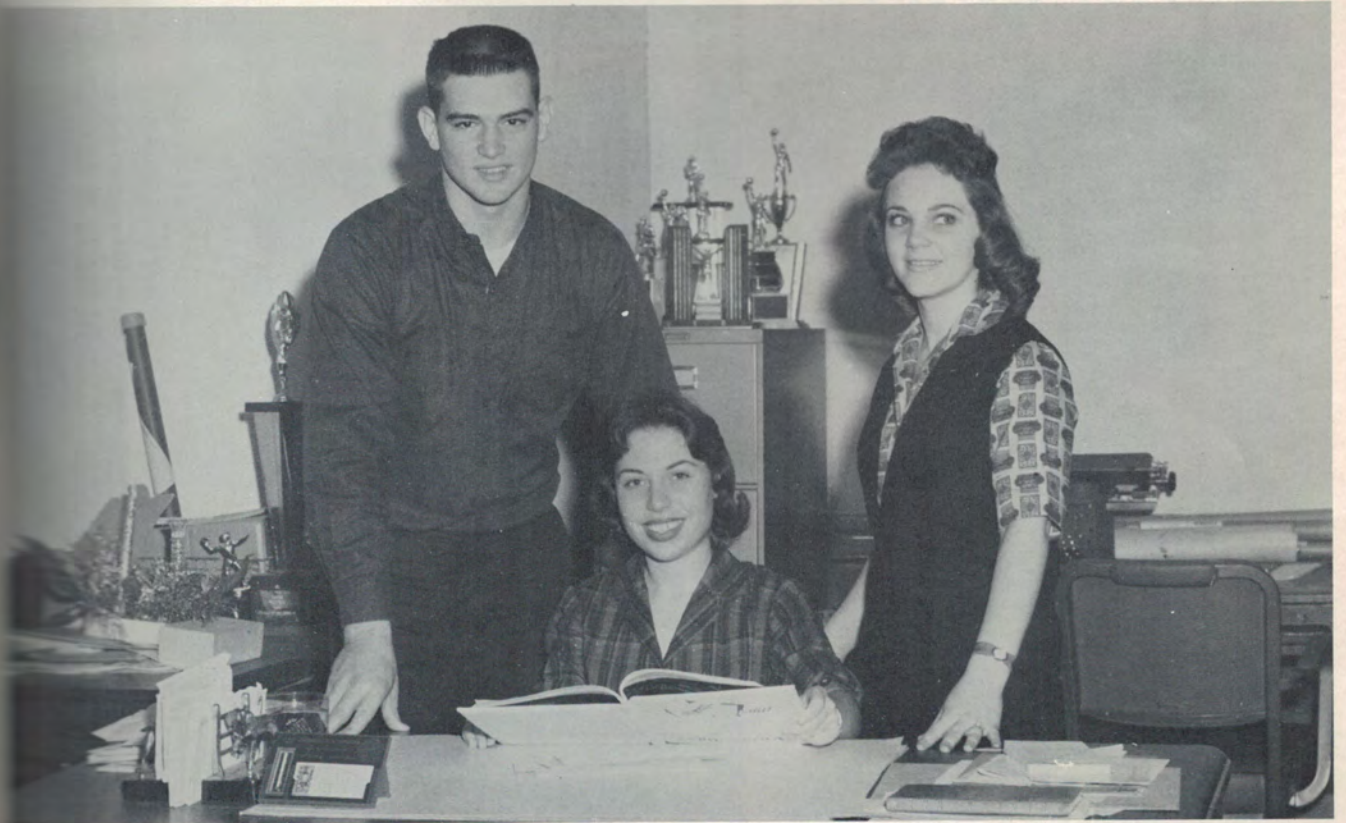
Business Manager

RANDY THAYER

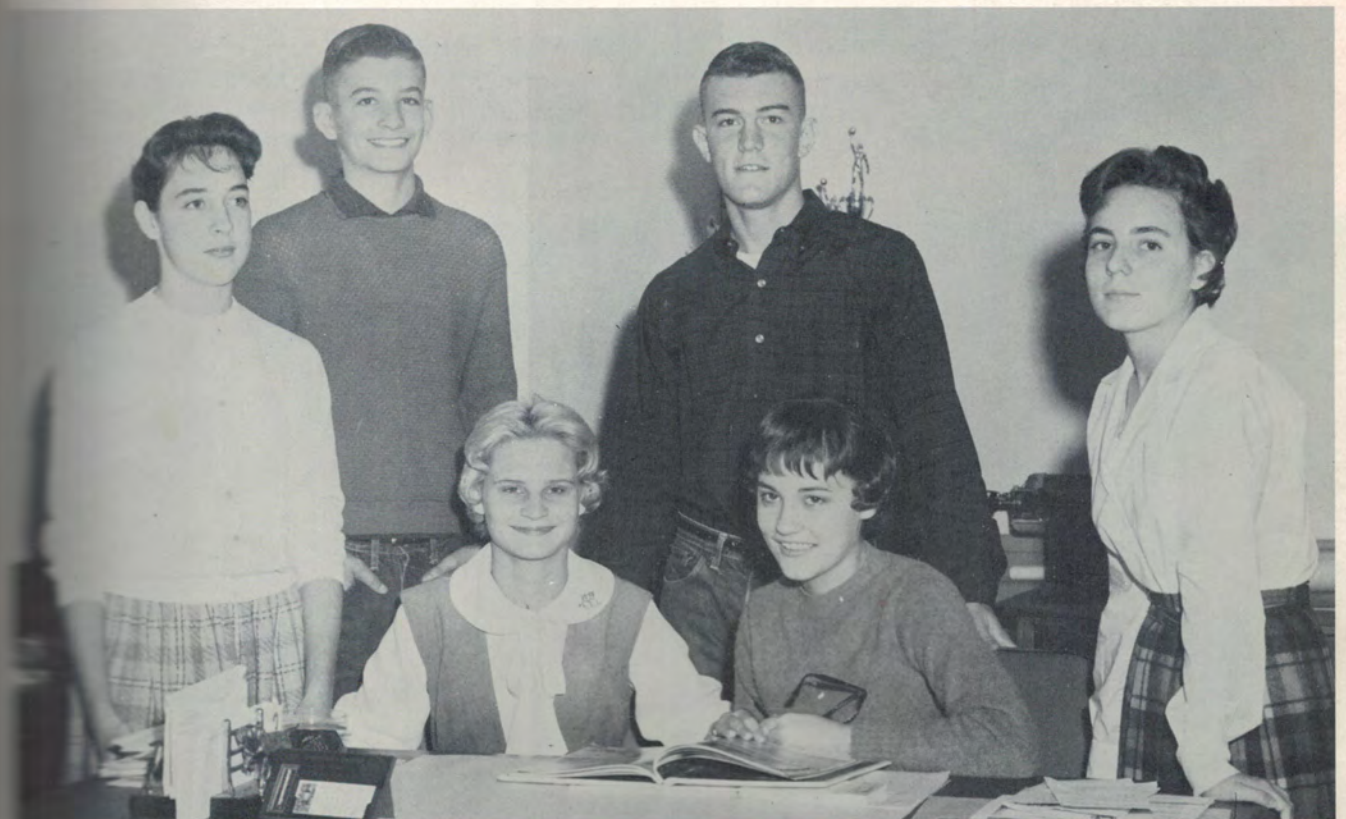




# STAFF



Assistant Editor, Laura Meeker, Assistant Business Managers, James Knoll and Cile Bubenzer.



Pictorial Editor, John Luke; Assistant Pictorial Editor, Enid Sawyer; Typist, Michael Kent; Organization Manager, Mary Lynn Chatelain; Assistant Organization Manager, Mary Maude Guillot; Artist, Charlotte Clark.



# STUDENT COUNCIL

President  
RONNIE KELLER

Advisor  
MALCOLM J. BORDELON



SEATED: Johnny Meeker, Rep.; Diane Griffin, Rep.; Lynn Wright, Sergeant-at Arms; Cecil Singleton, Vice President; Mike Clark, Sergeant-at-Arms; Dianne Zimmerman, Secretary; STANDING: Danny Stagg, Parliamentarian; Charles Earnest, Treasurer; Malcolm Bordelon, Advisor; Ronnie Keller, President; David Townsend, Rep.; Oliver LaPrairie, Rep.





# THE TRUMPET

Editor-in-Chief  
JANET NEWMAN  
Assistant Editor  
MYRTLE POPE  
Business Manager  
WAYNE HARPER  
News Editor  
RACHEL EARLES  
Feature Editor  
DIANNE ZIMMERMAN  
Exchange Manager  
GAYLE NEWMAN

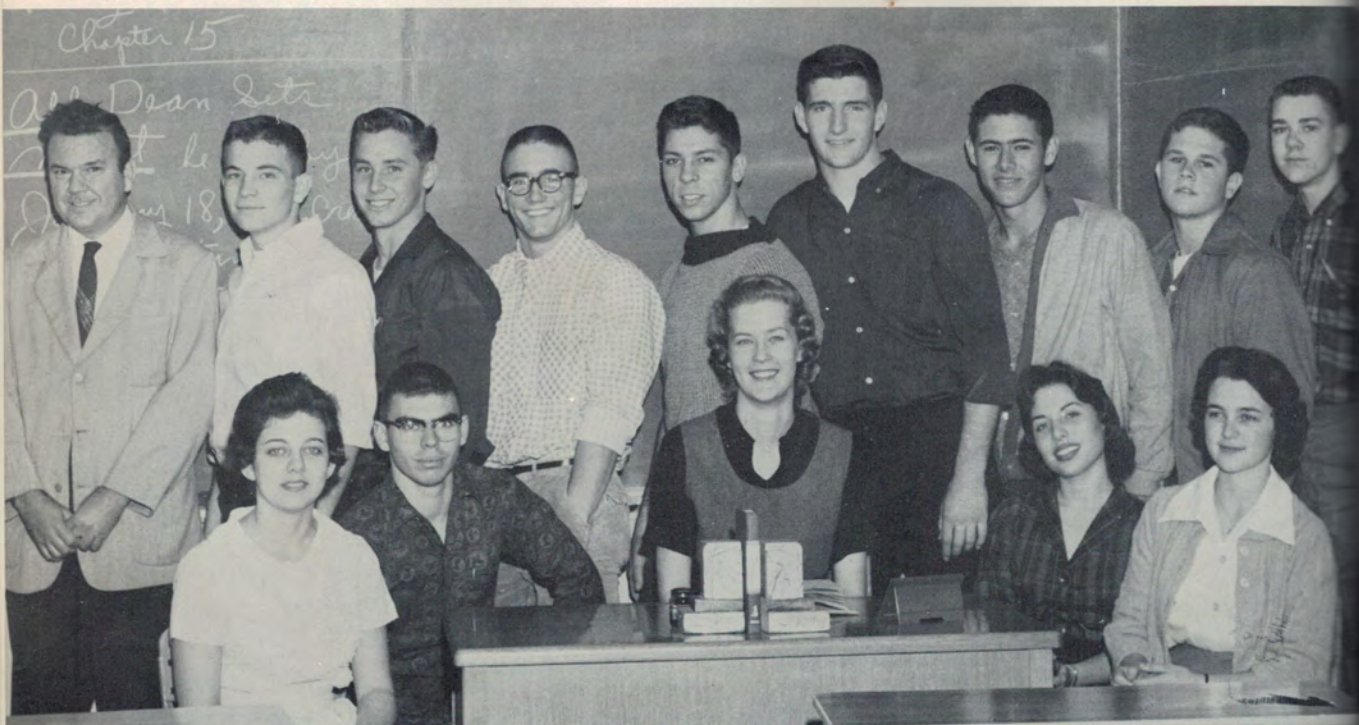


SEATED: Sandra Wyble, Reporter; Kitty Rabalais, Typist; Gree Griffin, Reporter; Barbara St. Romain, Reporter; Beverly Polotzola, Reporter.  
STANDING: Harriet Tubre, Reporter; Diane Cochran, Typist; Francis LaFleur, Artist; Lynn Wright, Reporter; Mike Clark, Circulation Manager; John Pierce, Circulation Manager; Diane Griffin, Reporter; Kay Whisman, Artist.





# F.B.L.A.



President Marion Chapman, First Vice President Pat Ryan, Second Vice President Kenny Brocato, Secretary Diane Bordelon, Reporter Laura Meecker, Sergeants-at-Arms Martha Rox and Charles Earnest, Treasurer Charles Griffin, Historian James Mixon, Parliamentarian Francis La Fleur, Rep. Senior Gayle Hinckley, Junior Carlton Townsend, Sophomore Paul Reed, Freshman Tucker Melancon

*Kelly*

## MEMBERS





# FUTURE HOMEMAKERS OF AMERICA



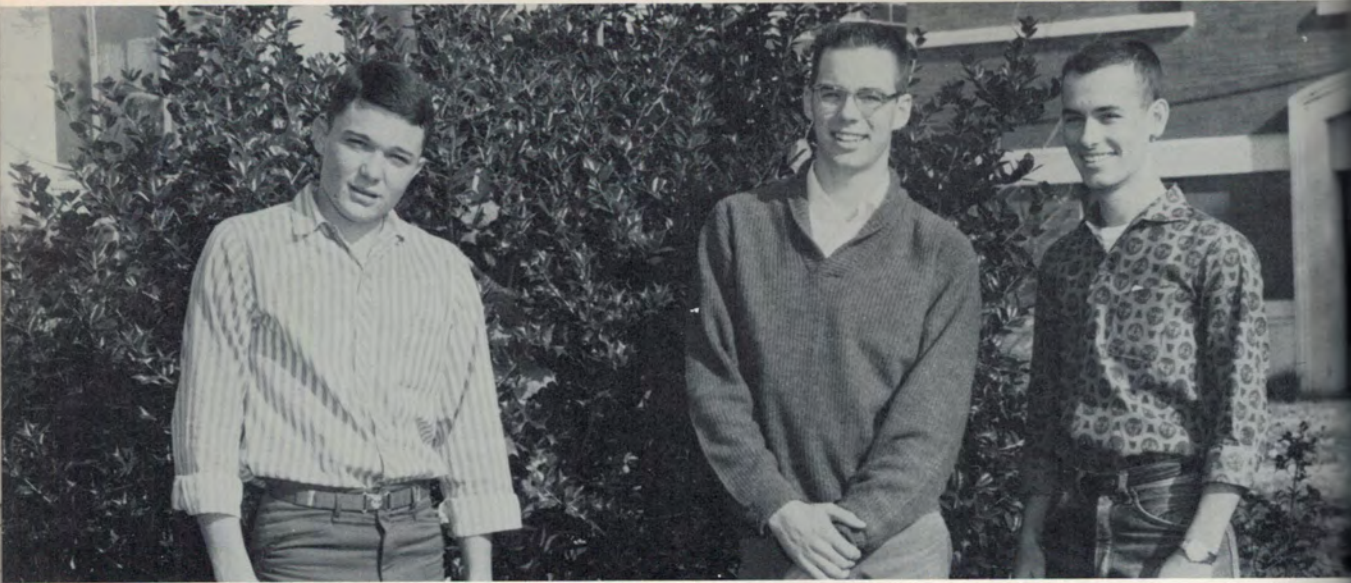
President Linda Gauthier, Vice President Rachel Earles, Secretary Emma Goudeau, Treasurer Martha Trump, Parliamentarian Bobbie McIntrye, Historian Nancy Calaway, Song Leader Diane Bordelon, Sergeants-at-Arms Diane Villemarette and Gree Griffin, Reporter Enid Sawyer

## MEMBERS





# CHAPTER BEAU & DUKES



Beau Buddy Blalock

Duke Randy Thayer

Duke Ken Dickerson

## CHAPTER BABIES

## CONTEST WINNERS



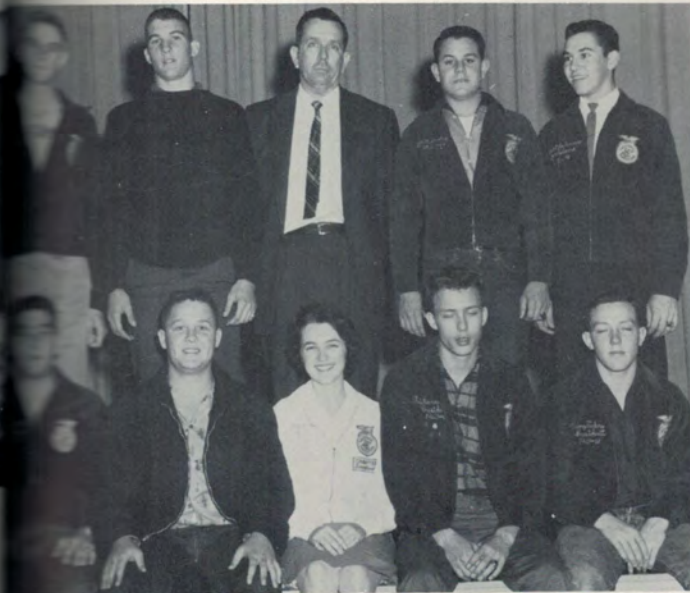
Debbie Griffin  
David Bordelon



Gayle Newman, Yvonne Rabalais  
Doris Ladnier



# FUTURE FARMERS OF AMERICA

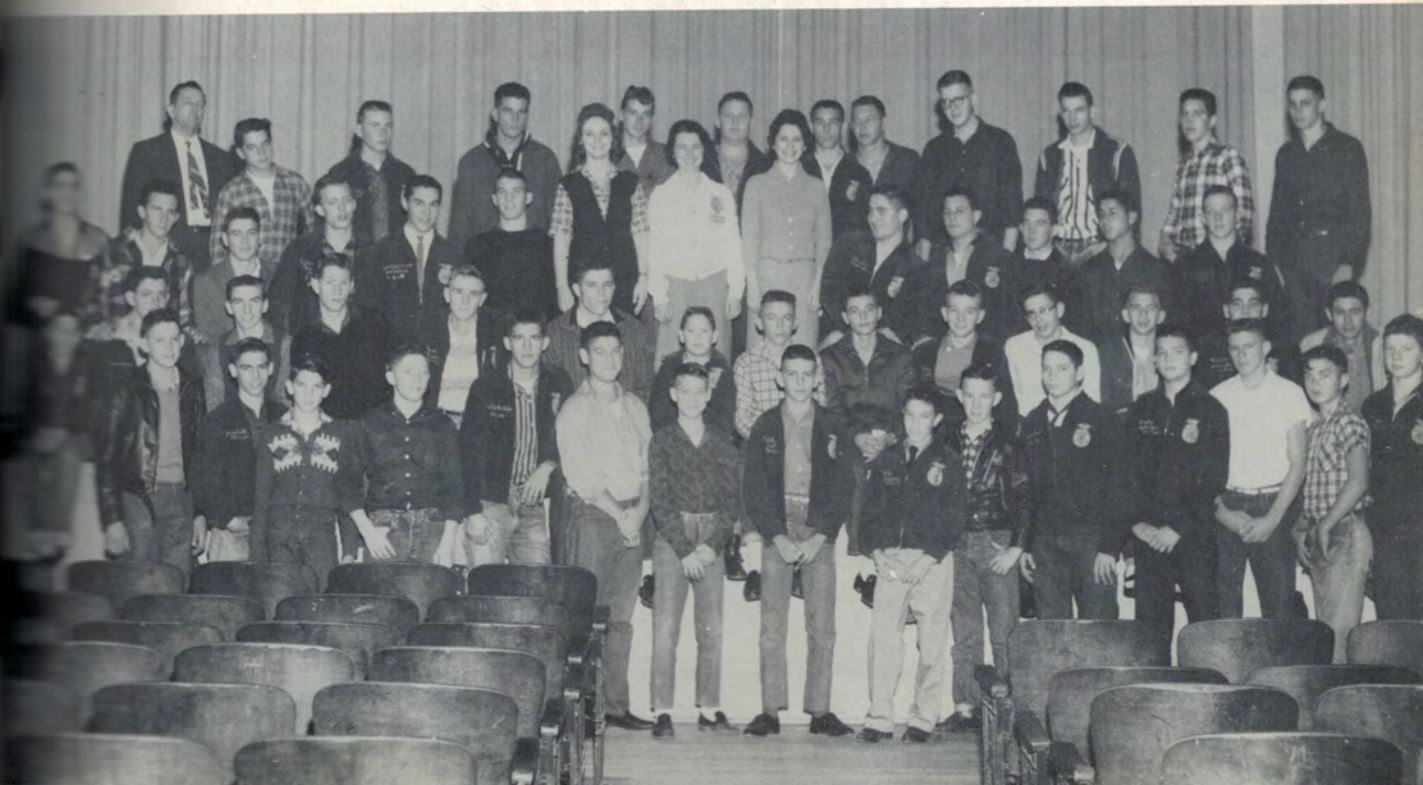


President, A. J. Baronne; Vice President, Tommy Tabre; Sentinel, Harvey Allums; Administrative As., Leon Jeansonne; Treasurer, Vincent Palermo; Secretary, Gilbert Guidry; Advisor, Mr. St. Romain; Sentinel, Buddy Richie; Corresponding Secretary, David Brunson; Sweetheart, Diane Bordelon.



Delegates to Kansas City  
Vincent Palermo, Mike Barrone, Frank Prudhomme, Jimmy Earles, David Brunson, Jimmie Campbell, A. J. Baronne, and Grady Bubenzer.

## MEMBERS



T WINNERS





## "B" CLUB



Left to right: Mike Clark, Charles Griffin, Kenny Brocato, John Pierce, Brother Knoll, Edward Jusselin, Coach Walter Brister, Pat Ryan, Richard Overbey, Oliver LaPrairie, Charles Earnest, James Mixon, Herbert Jeansonne.

## JUNIOR DEPUTIES





# MAJORETTES



Elizabeth Chapman, Barbara St. Romain, Charlotte Clark, Feature Twirler; Claire Rabalais, Head Majorette; Marilyn Lena, Diane Villemarette.

# CHORUS





# BUNKIE HIGH SCHOOL BAND







BAND OFFICERS: Vincent Palermo, President; 1st Officer, Lloyd Turner; 2nd Officer, Marion Chapman; 3rd Officer, Danny Johnson; Head Majorette, Claire Rabalais; Treasurer, Elizabeth Chapman; Librarian, Mary Maude Guillot

## CONCERT BAND





# BUNKIE HIGH SCHOOL BOOSTERS







President, Cecil Singleton; Vice President, Myrtle Pope; Secretary, Enid Sawyer; Treasurer, Laura Meeker; Reporter, Harriet Tubre; Sq. Captains, Kitty Rabalais, Rachel Earles; Assistant Sq. Captains, Ingree Griffin, Yvonne Rabalais.

HEAD CHEERLEADER  
Lucile Bubenzer

CHEERLEADERS: Gayle Newman, Cile Bubenzer, Janet Newman, Beverly Frank, Mary Biles, Dianne Bordelon.







# ATHLETICS

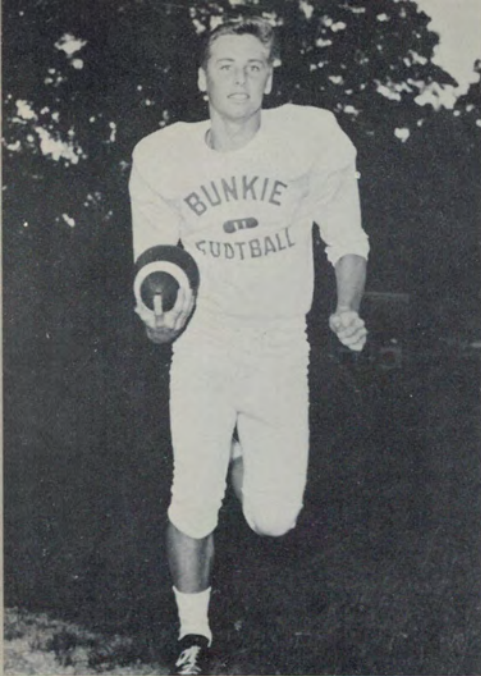
1960 PARISH, DISTRICT, AND REGIONAL CHAMPIONS



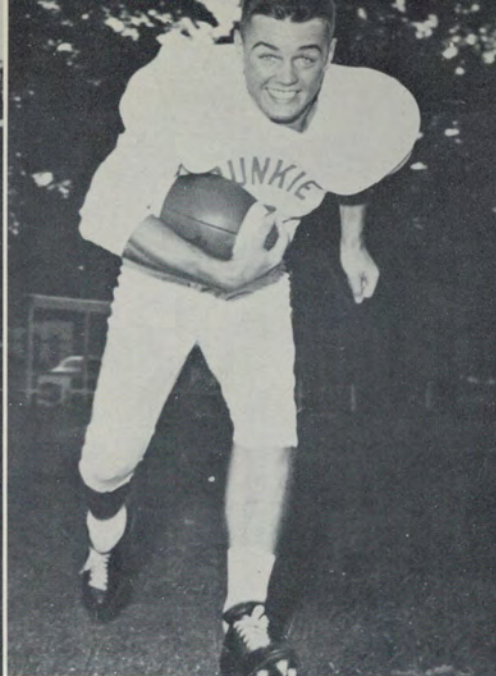
1960 PARISH, DISTRICT, AND BI-DISTRICT CHAMPIONS







Quarterback  
CHARLES EARNEST  
Tri-Captain



Halfback  
OLIVER LAPRAIRIE  
Tri-Captain  
All Dist., All SW Dist.



Center  
RICHARD OVERBEY  
Tri-Captain  
All Dist., All SW Dist.  
All State

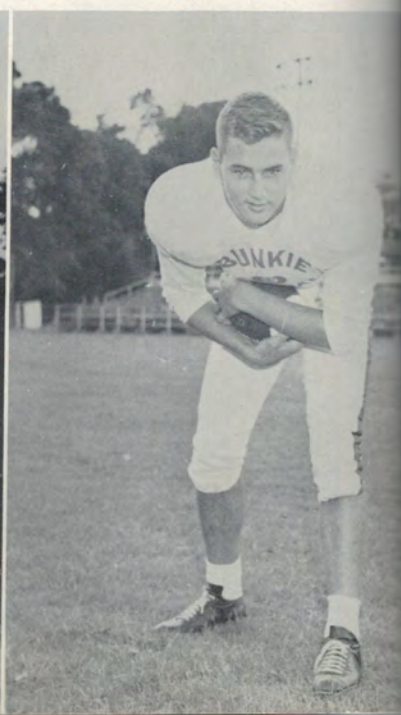
End  
JOHN PIERCE



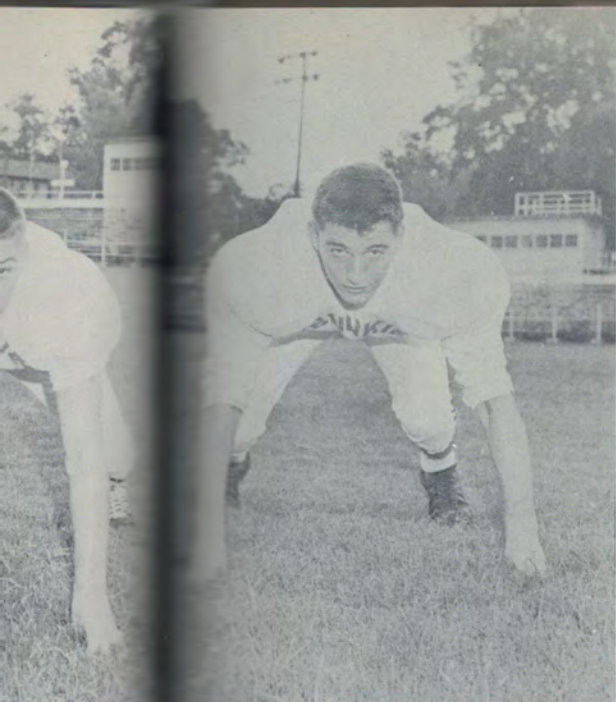
Halfback  
KEN BROCATO



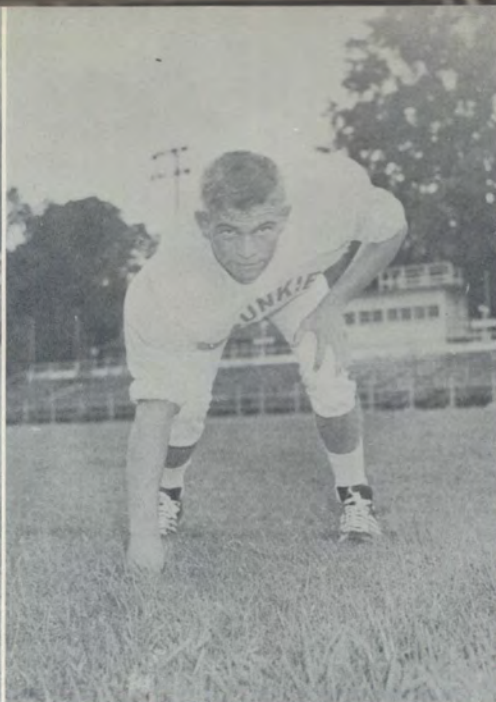
Fullback  
EDWARD JUSSSELIN



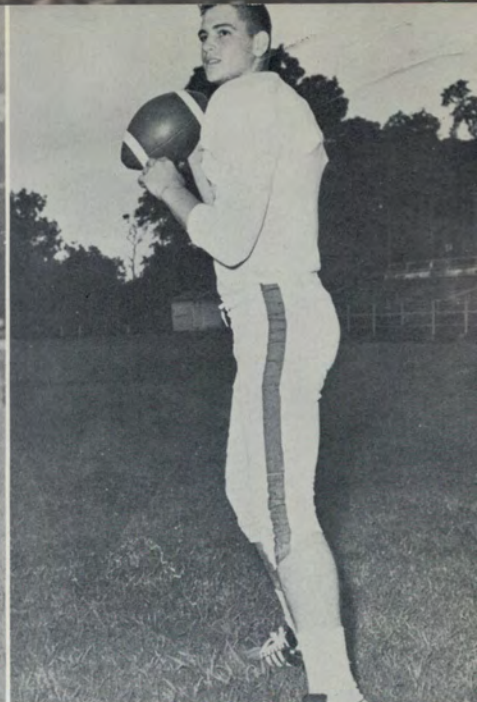




Tackle  
PAT RYAN  
All Dist., All SW  
Dist.



Guard  
CHARLES GRIFFIN  
All Dist.



End  
JAMES KNOLL

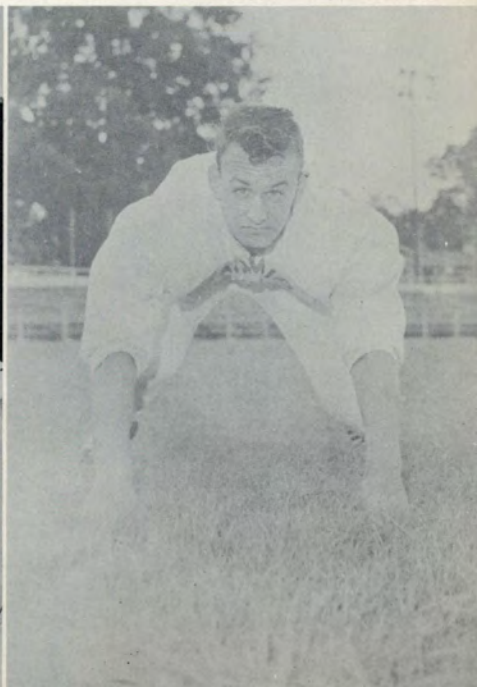
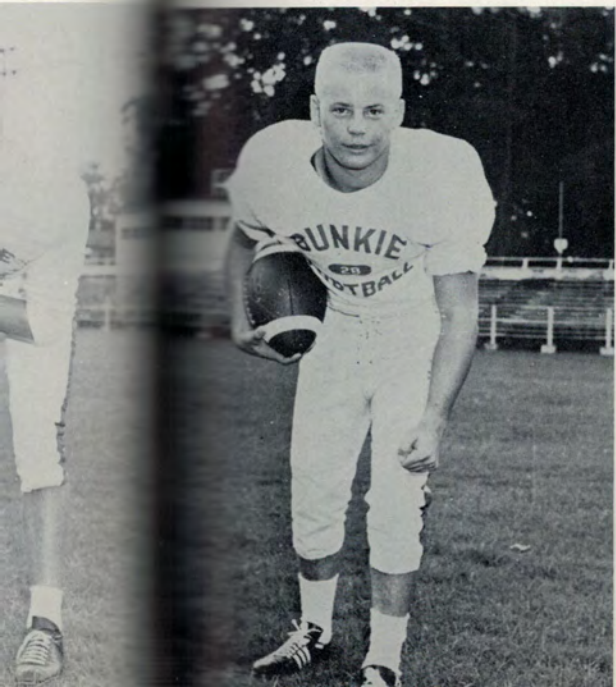
ERBEY  
ain  
SW Dist.  
e

ELIN

Halfback  
MIKE CLARK

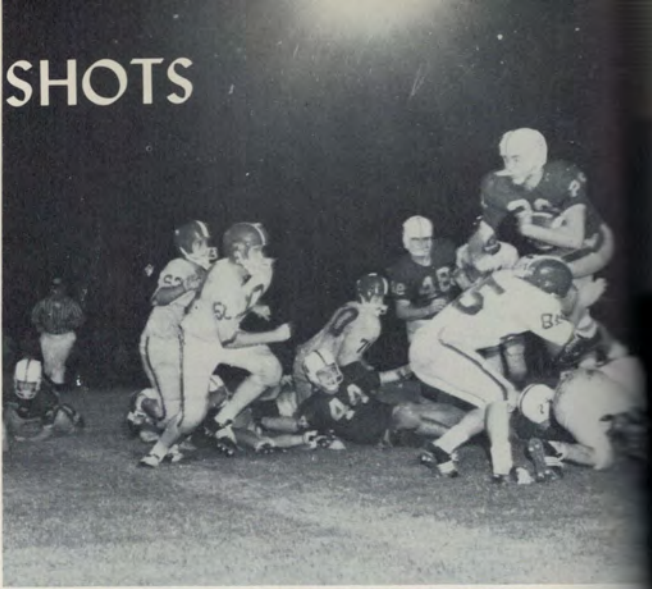
Tackle  
MADISON FIRMIN

Guard  
HERBERT JEANSONNE





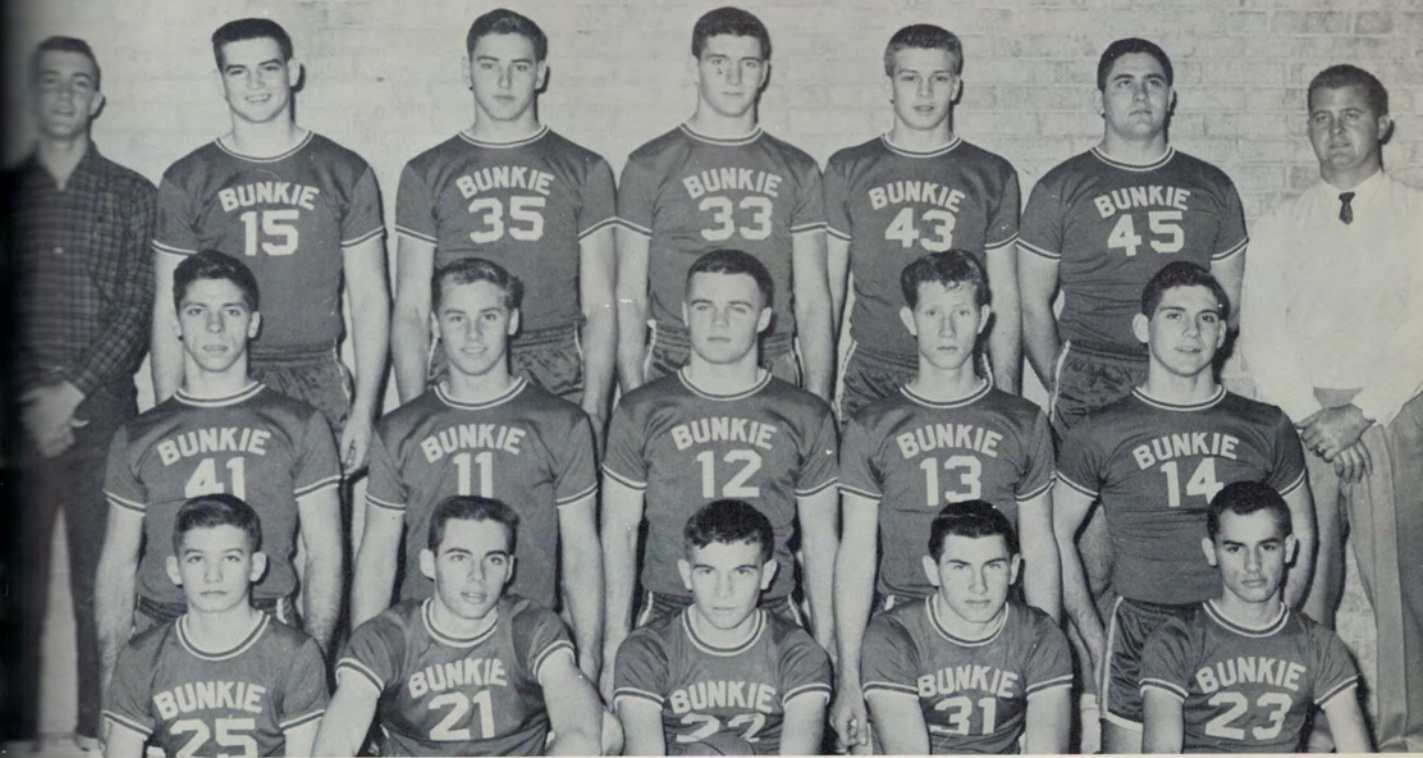
# ACTION SHOTS



Howard  
Center Ed



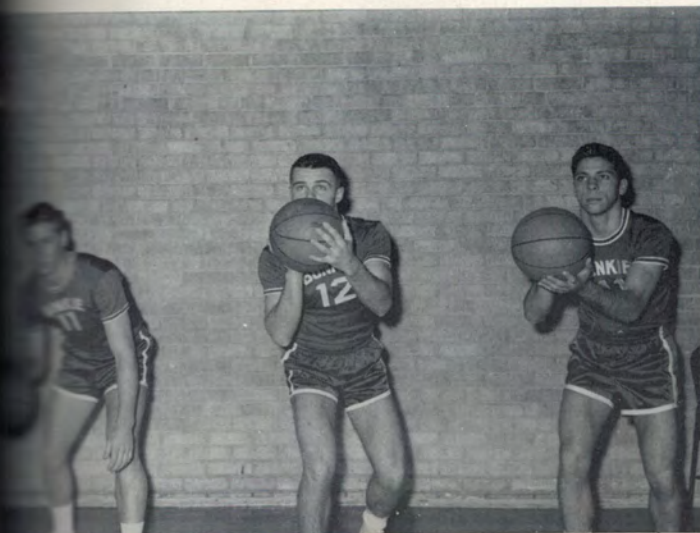
# BOYS' BASKETBALL



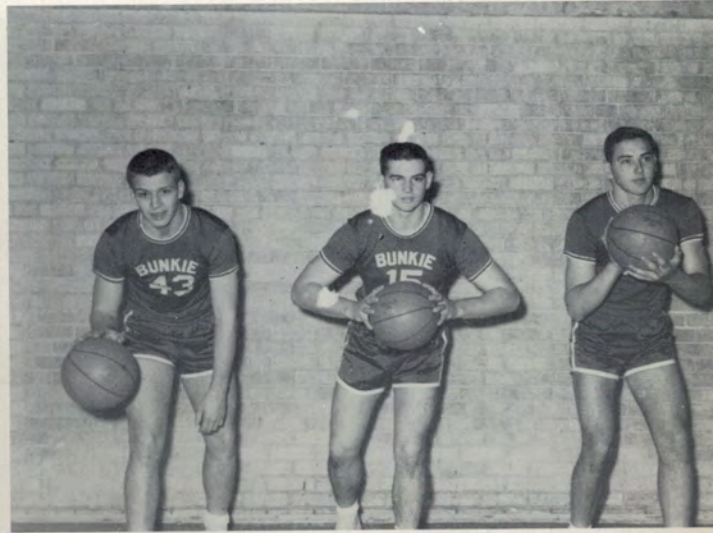
STANDING: Knoll, Jusselin, Ryan, Overby, Firmin.

KNEELING: Brocato, Earnest, La Prairie, Wallace, Pierce.

SITTING: Luke, Blalock, Griffin, Dausat, Dickerson, Manager Kent, Coach Foreman.



Forward "Boo Boo" Overby, Forward James Knoll,  
Center Edward Jusselin.

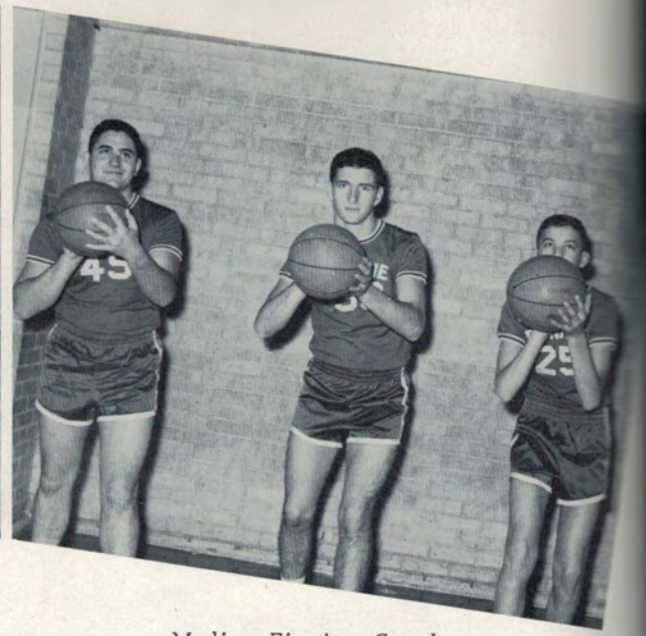


Guard Charles Earnest  
Guard Oliver La Prairie  
Forward Kenneth Brocato





Charles Griffin - Guard  
Buddy Blalock - Guard  
Kenneth Dickerson - Guard



Madison Firmin - Guard  
Pat Ryan - Center  
John Luke - Forward



Joel Wallace - Forward  
Allen Dausat - Guard  
John Pierce - Guard



# GIRLS' BASKETBALL



Cile Bubenzer, Lynn Wright, Willie M. Jusselin, Dianne Zimmerman, Martha Trump, Nancy Calaway, Rhoda Buckley, Diane Griffin, Yvonne Rabalais, Doris Griffin, Emma D. Goudeau.



Coach Margaret LaCaze



Managers Linda Gauthier, Laura Meeker, and Harriet Tubre.





GUARD  
Willie Mae Jusselin



FORWARD  
Nancy Calaway



GUARD  
Lynn Wright



FORWARD  
Martha Trump



GUARD  
Cile Bubenzer



FORWARD  
Dianne Zimmerman



GUARD  
Doris Griffin



FORWARD  
Emma Goudeau





at



D  
deau



# FAVORITES



PRESENTING  
MR. AND MISS B.H.S.  
AND  
FAVORITES OF BUNKIE HIGH SCHOOL

With pride the 1961 Bunavola announces Mr. and Miss B.H.S. and Favorites. These young ladies and gentlemen were elected by popular vote. The characteristics considered personality, character, and leadership.

Our 1961 Miss Bunkie High School is Miss Cile Bubenzer. Miss Bubenzer has been a favorite for two years, is our present head cheerleader, and is a F.F.A. Sweetheart maid. Cile is a varsity guard on our basketball team, also.

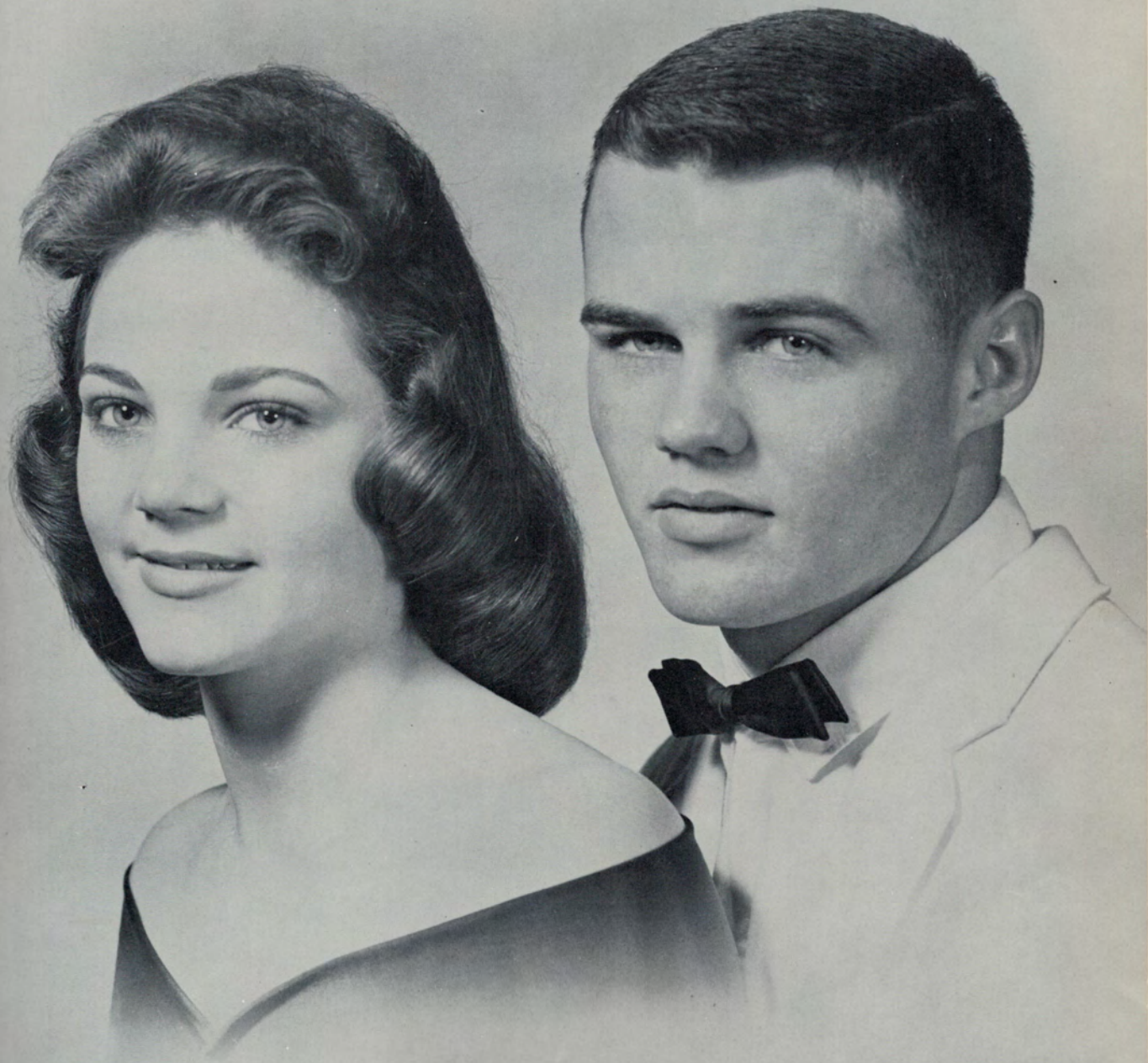
Our Mr. Bunkie High is Oliver Laprairie. This is the second year that Oliver has been our Mr. B.H.S. He was a favorite his sophomore year and was Vice President of the freshman class. Oliver has excelled in athletics; he was tri-captain of the football team and was a valuable member of the basketball team.

The favorites are:

Miss Mary Biles  
Miss Janet Newman  
Miss Dianne Zimmerman  
Miss Cecil Singleton  
Miss Gree Griffin  
Miss Martha Trump  
Miss Emma Goudeau  
Miss Diane Bordelon

Mr. Charles Griffin  
Mr. Charles Earnest  
Mr. Kenneth Brocato  
Mr. Edward Jusselin  
Mr. Richard Overbey  
Mr. Ronnie Keller  
Mr. Michael Clark  
Mr. Pat Ryan









FAVORITES

Miss Mary Biles

and

Mr. Charles Griffin



FAVORITES

Miss Janet Newman

and

Mr. Charles Earnest

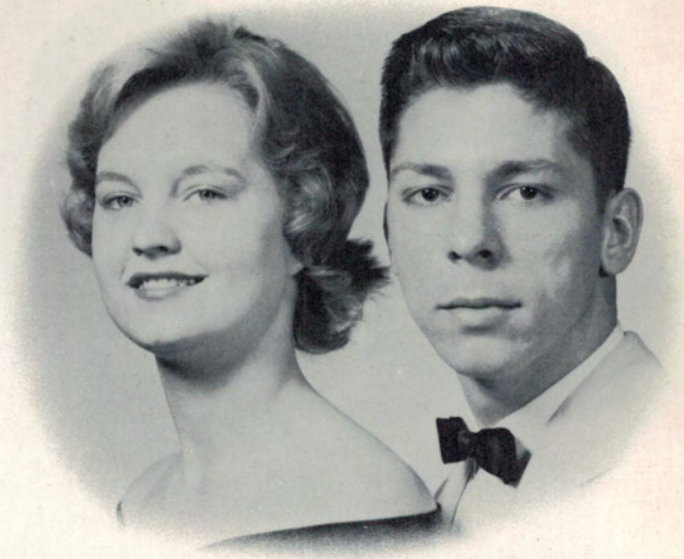


FAVORITES

Miss Dianne Zimmerman

and

Mr. Kenneth Brocato



FAVORITES

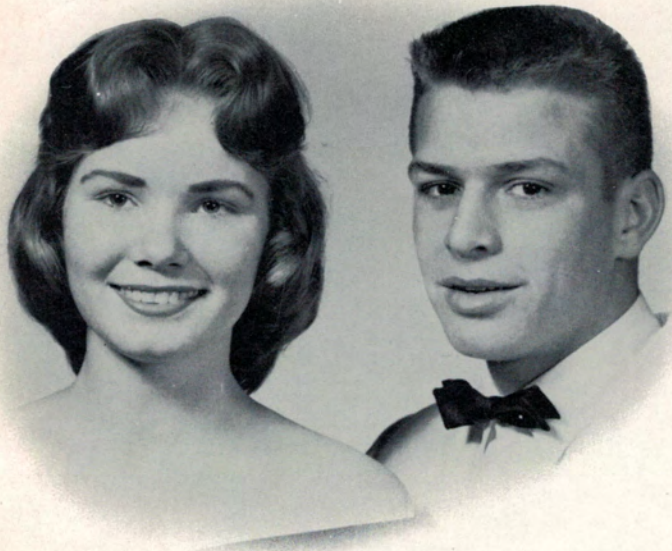
Miss Cecil Singleton

and

Mr. Edward Jusselin







FAVORITES

Miss Gree Griffin

and

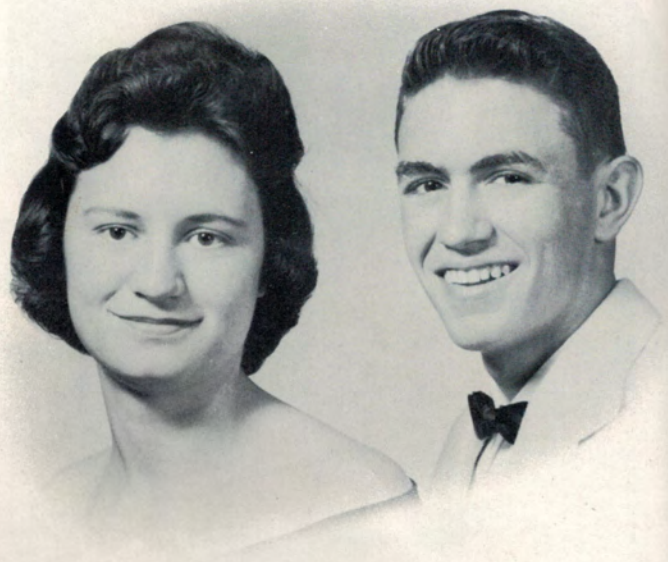
Mr. Richard Overby

FAVORITES

Miss Martha Trump

and

Mr. Ronnie Keller





FAVORITES

Miss Emma Goudeau

and

Mr. Michael Clark

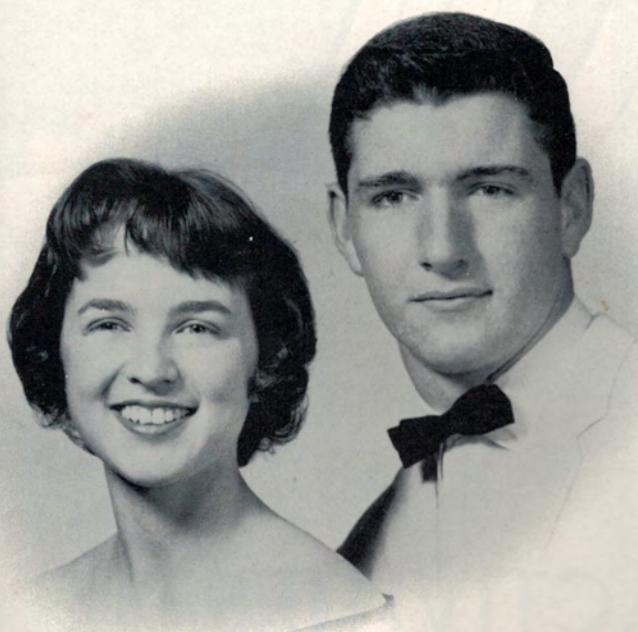


FAVORITES

Miss Diane Bordelon

and

Mr. Pat Ryan







# ACTIVITIES



# QUEENS



Myrtle Pope  
Miss Bunkie

Marion Chapman  
Band Queen  
Miss F. B. L. A.







Diane Bordelon  
F. F. A. Sweetheart  
Homecoming Queen  
Winter Carnival Queen



Rachel Earles  
Booster Queen



Diann  
Dav







Sharon MacBride  
Charles Earnest



Cile Bubenzer  
Oliver LaPrairie



Dianne Zimmerman  
John Pierce



Dianne Bordelon  
Davis Tubre



Court



Queen Dianne Bordelon  
crowned by  
Mr. Nick Glorioso



Myrtle Pope  
James Knoll



Louise Mayeaux  
A. J. Baronne



Sandra Wyble  
Kenny Brocato





Cecil Singleton  
Mike Clark



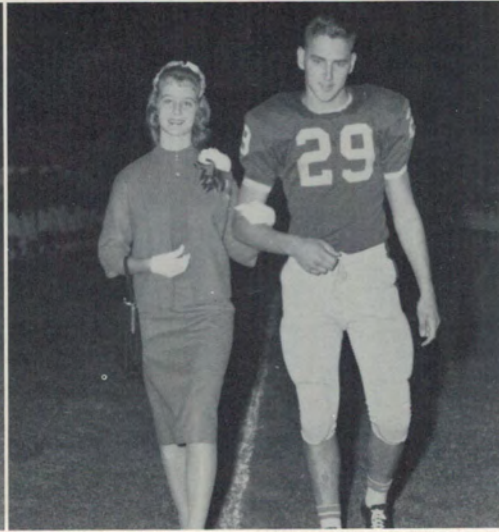
Elizabeth Chapman  
Edward Jusselin



Doris Ladnier  
Richard Overby



Claire Rabalais  
Mike Johns



Janice Jusselin  
Charles Griffin



Lynn Wright  
C. H. Socia



Dianne Griffin  
Pat Ryan



Martha Trump  
Herbert Jeansonne

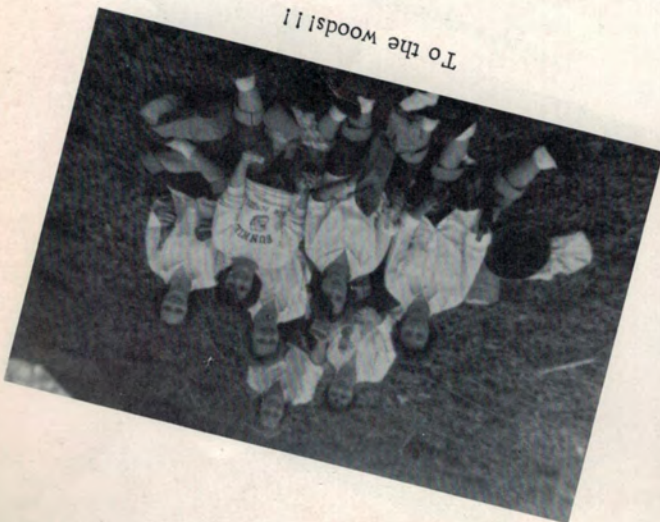


# THE 1961 SENIORS

Miss America and her Maids



To the woods!!!



Ooohhhh!!!



The boys won't join us



We'll see you later





# CHEERLEADERS AT LARGE



Recognize something, coach???



Girls! Did you use cement or deodorant?



Look, Mom, no cavities



Fatty!!



Take us to your leader



# PICKED AT RANDOM



Rise and shine



Ready and waiting



Since when!!!



Now, girls



The Brides of Dracula



# PICKED AT RANDOM



Just try it, Billy



What's with this punch



This way, girls



Send you shoes to C.A.R.E.



Is this our president?





















ADVERTISERS