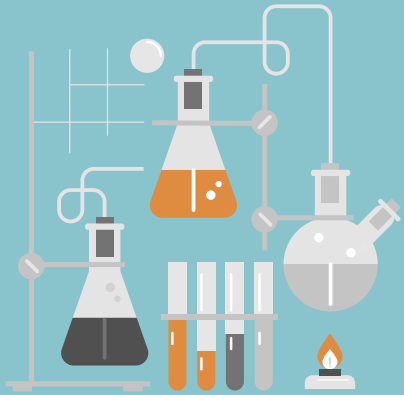


WELCOME TO OUR OPEN HOUSE!

If you have a question for us,
just stick a post-it on the Post-it
Parking Lot or raise your hand
as we reach that topic.



Fact Fluency in Math



Students will take a fact fluency quiz every week. Students will be given 5 minutes to complete 25 problems in the 1st nine weeks. The 2nd nine weeks they will work 50 problems in 5 minutes.

We will set fluency goals based on how many questions were completed before the timer and the accuracy of the problems. It is more important to me that they have good number sense than be quick.

The quizzes will be averaged together for one grade in the gradebook. Students need a lot of practice with fact fluency.

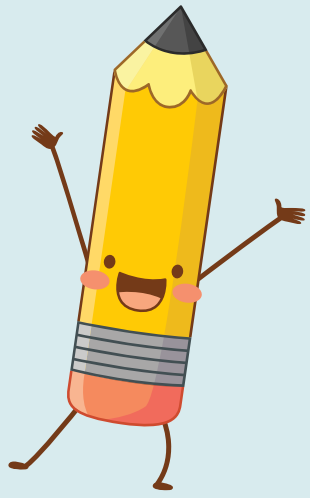


Homework Math/Science

We send home a newsletter with homework attached every Friday. It is due the following Friday.

For **math**, students have a sheet to practice last week's skills and work on the current week's skills. Please make sure your child is working out and proving their answers.

For **science**, students will not receive any written homework. They will just need to study their vocabulary and review the notes in their notebook to prepare for upcoming tests.

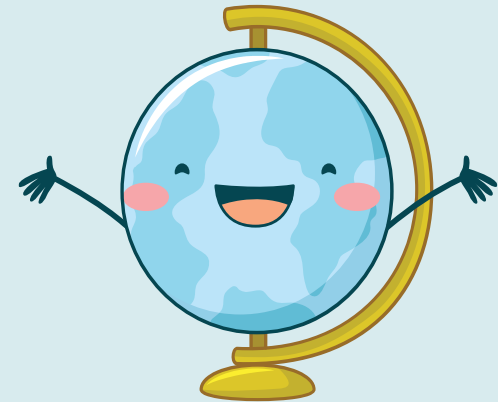


Mrs. Bailey's ELA and S.S. Class Info



All dates tests and quizzes will be on our biweekly newsletter.

Social Studies grades will be taken from activities the we complete in class or reading passages that we read together in class. We will focus on important people and events that have shaped our country and state. Occasionally we will have a project to complete at home for a grade.



Homework for ELA



Students will be given 2 weeks to study their spelling and vocabulary words. On the week of the vocab and spelling quiz.

Every other week a reading comprehension worksheet will be sent home or an iReady lesson will be assigned. The worksheet will provide practice for the skills that we are learning in class.



If you are looking for a way to help your child on reading tests, review your student's homework assignment with them.

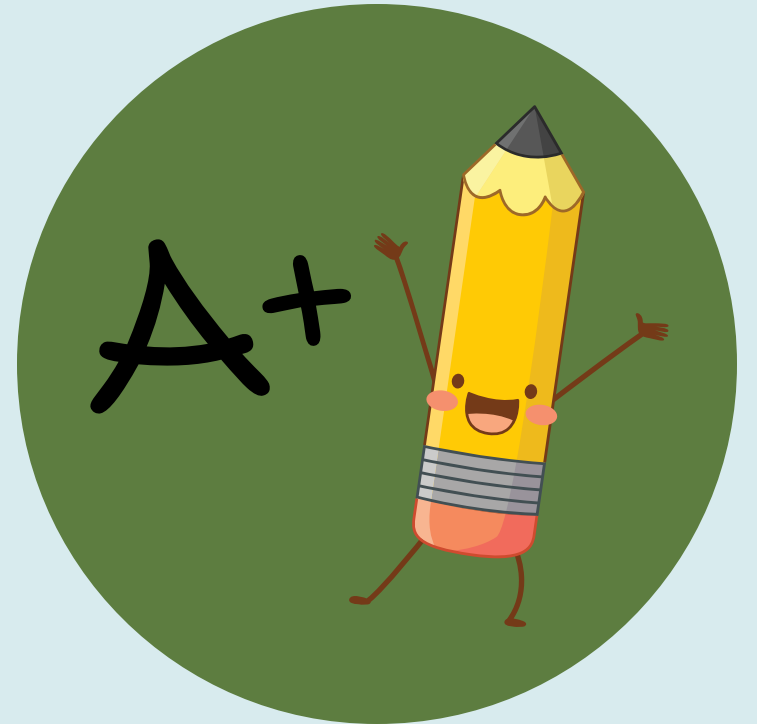
Signed Paper Folders

Signed paper folders will be sent home every Thursday.

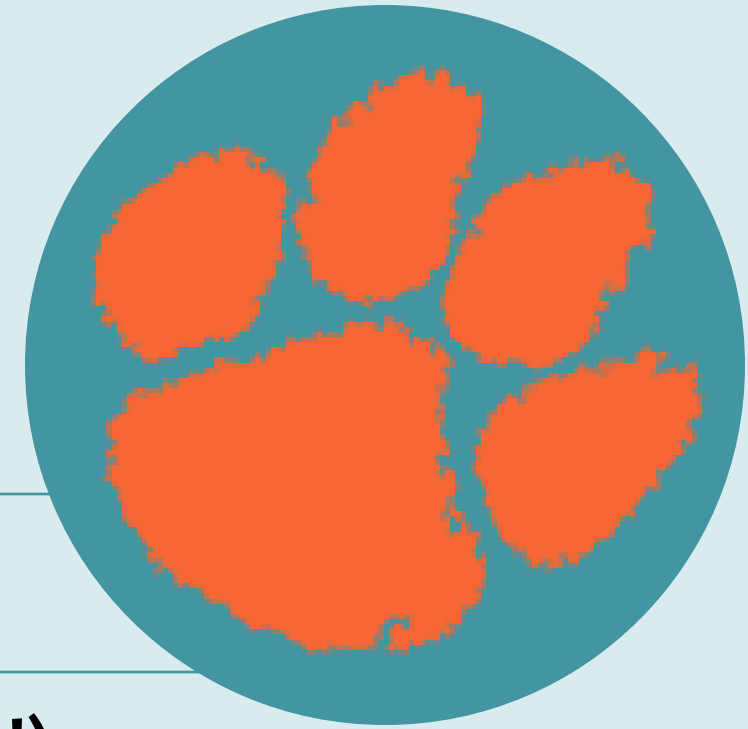
All graded papers can stay at home except any grade below 70. We ask that these be signed and returned.

Please have folders signed and returned by Friday.

Progress reports are sent home every 4th or 5th week in the 9 weeks.



Tiger Pride Expectations



P- Positive Attitude (See the good!)

R-Respect (Respect everyone, always!)

I-Integrity (Do what's right/ Own your behavior!)

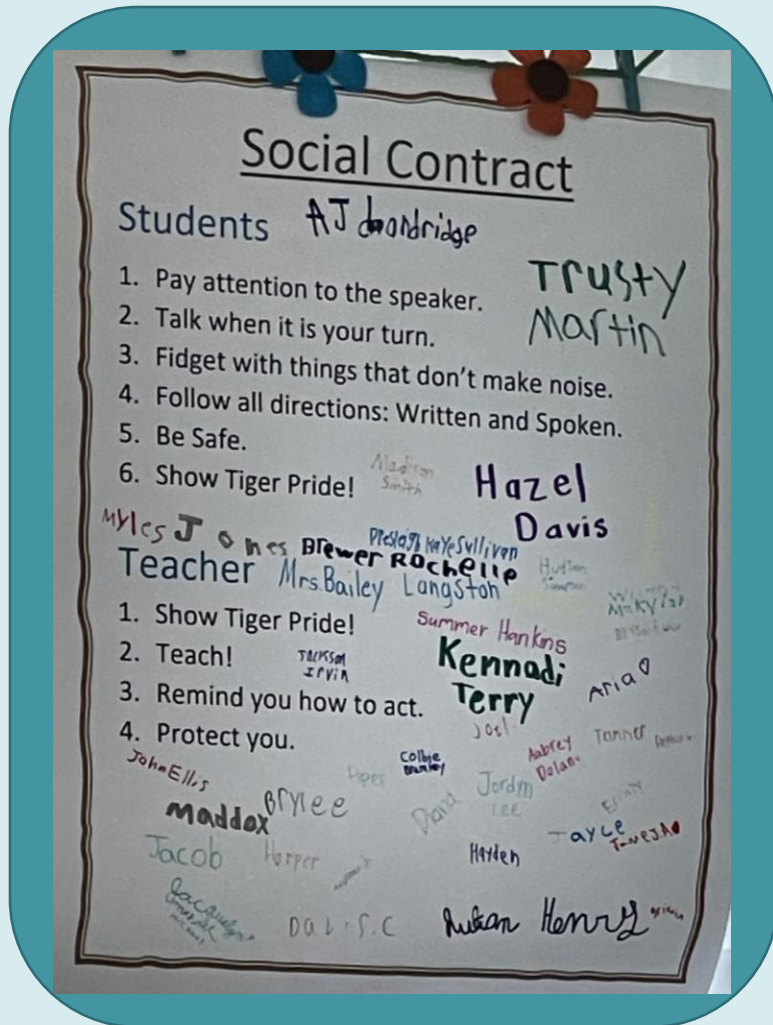
D-Dedicated (Give your all, finish what you start!)

E-Excellence (Always do your best!)

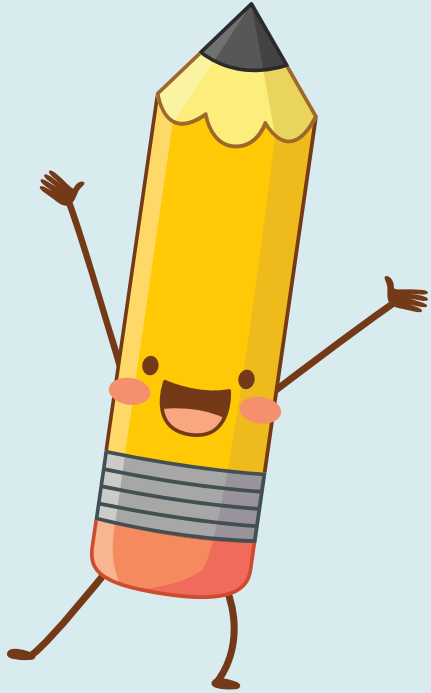
In class we use a Social Contract that we make together.

To form our social contract, we use the following questions...

- How do you want to be treated by me?
- How do you want to be treated by each other?
- How do you think your teachers want to be treated by you?
- How will we handle conflict?



Consequences



When a student does not meet our Tiger Pride Expectations or breaks the classroom social contract, he/she will receive the following consequences.

- 1 check- Verbal warning
- 2 checks- Behavior chart check (stand at recess)
- 3 checks- Grow Note to the student (student may stand at recess or have a silent lunch)
- 4 checks- Pride Reflection Sheet and Parent Contact
- 5 checks- Office Referral

Rewards

Students will earn Tiger Pride Tickets for positive behaviors to earn rewards.

Important Online Resources

Google our names and OGCE to visit our websites for important resources:

Brandy Bailey Loni Cook



Schoology: Look here for Extra Practice.

Password Info: Student usernames follow the format 'js234567@dcsms.org' - 2 letters and 6 numbers. The 2 letters are the initials of their first and last names and the 6 numbers are the last six digits of their lunch number for a total of 8 characters.

Example: If Amy King's lunch number is 1234567, her computer / Email / Schoology username is ak234567@dcsms.org.

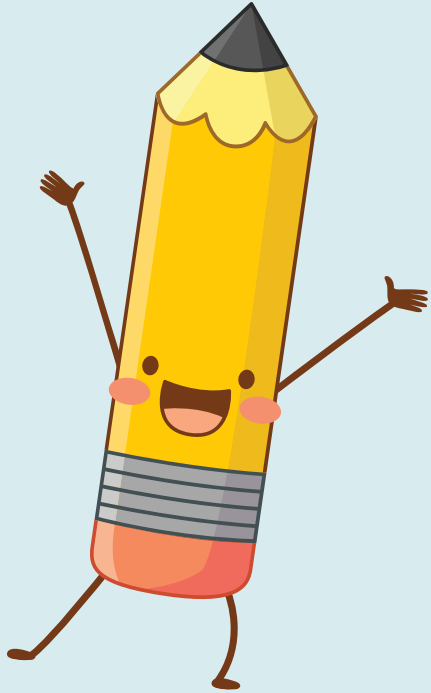
Student passwords are the school mascot plus their 6-digit birthdate in the format MMDDYY. **Example:** Tigers030406

Online Programs and Textbooks: Access these by using the [DCS Clever Portal](#).

Clever Password Info: Enter your student's lunch # in the username and password boxes.

I-Ready: Found in Clever. You can practice skills. Parents, you can watch the lessons with your child to review materials.

Miss Cook's Homeroom Schedule



7:35

Tardy Bell Rings

7:40 - 8:30

Science

8:30 - 9:15

Activity

10:25 - 10:50

Math

10:50 - 11:10

Recess

11:10 - 11:35

Lunch

Switch Classes

11:35 - 1:30

ELA: Reading/Writing

1:30 - 2:00

Social Studies

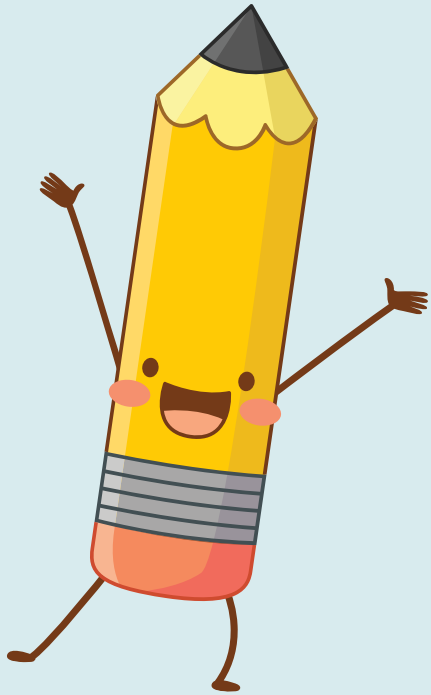
1:40 - 2:30

Tiger Time

2:30

Dismissal

Mrs. Bailey's Homeroom Schedule



7:35	Tardy Bell Rings
7:40 - 8:25	Activity
8:25 - 10:25	ELA: Reading/Writing
10:25 - 10:50	Social Studies
10:50 - 11:15	Lunch
11:15 - 11:35	Recess
Switch Classes	
11:35 - 1:30	Math
1:30 - 2:00	Science
1:40 - 2:30	Tiger Time
2:30	Dismissal

Activity Rotation

We are on a 6-day rotation for Activity Classes.

DAY	CLASS
A	Computer (Math iReady)
B	Music
C	Art
D	Library
E	LPA (Learning Pathway Academy ELA iReady)
F	PE

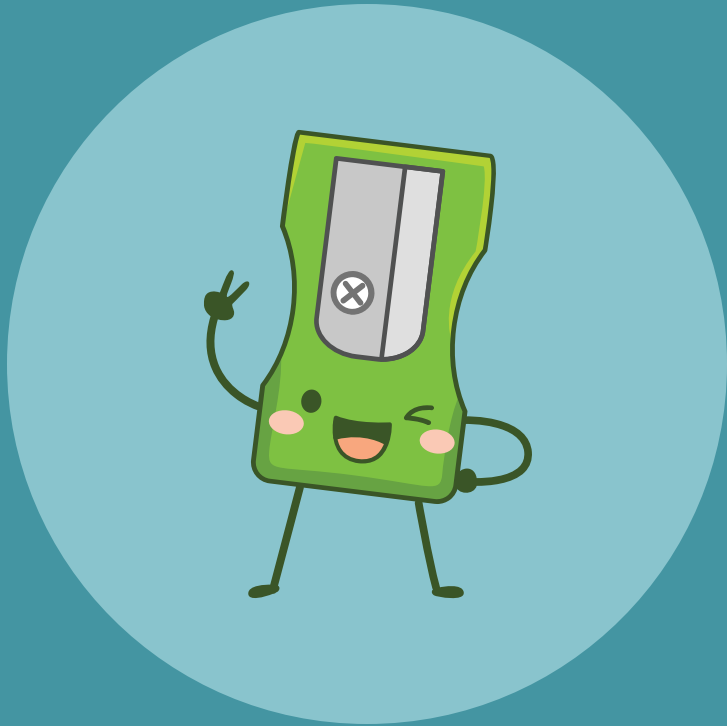
How can I help my child at home?

- Encourage your child to read at least 20 minutes every day.
- Encourage your child to work out the problems on their homework and study multiplication facts daily.
- Review tests, quizzes, and graded practices with your child when the graded paper folder comes home.
- Study spelling and vocabulary words.
- Study math study guides to prepare for tests so your child feels confident and prepared.

Miscellaneous Information

- We have a snack time each day. Your child may bring one from home or purchase one each morning.
- Students may eat breakfast in the cafeteria from 7:00-7:20. **Cost:** Paid is \$1.75 and Reduced Lunch is \$.30.)
- Your child is strongly encouraged to bring a **WATER** bottle. Please make sure it has a top of some sort to limit spills.
- Please send a note each day for **ANY** change on how your child will come home in the afternoon and be sure to remind your child to turn that in as soon as they get to school in the morning.
- Please send us a schedule of any of your child's extracurricular activities. We would like to try to make an appearance if possible.

Contact Information



Miss Loni Cook
Math/ Science
loni.cook@dcsms.org

Mrs. Brandy Bailey
Reading/Writing/ Social Studies
brandy.bailey@dcsms.org

Mrs. Bailey's Website



Mrs. Bailey's Wishlist



Miss Cook's Website



Miss Cook's Wishlist



Our Facebook Group



Thank you for
sharing
your sweet
children with us!
We love them!

