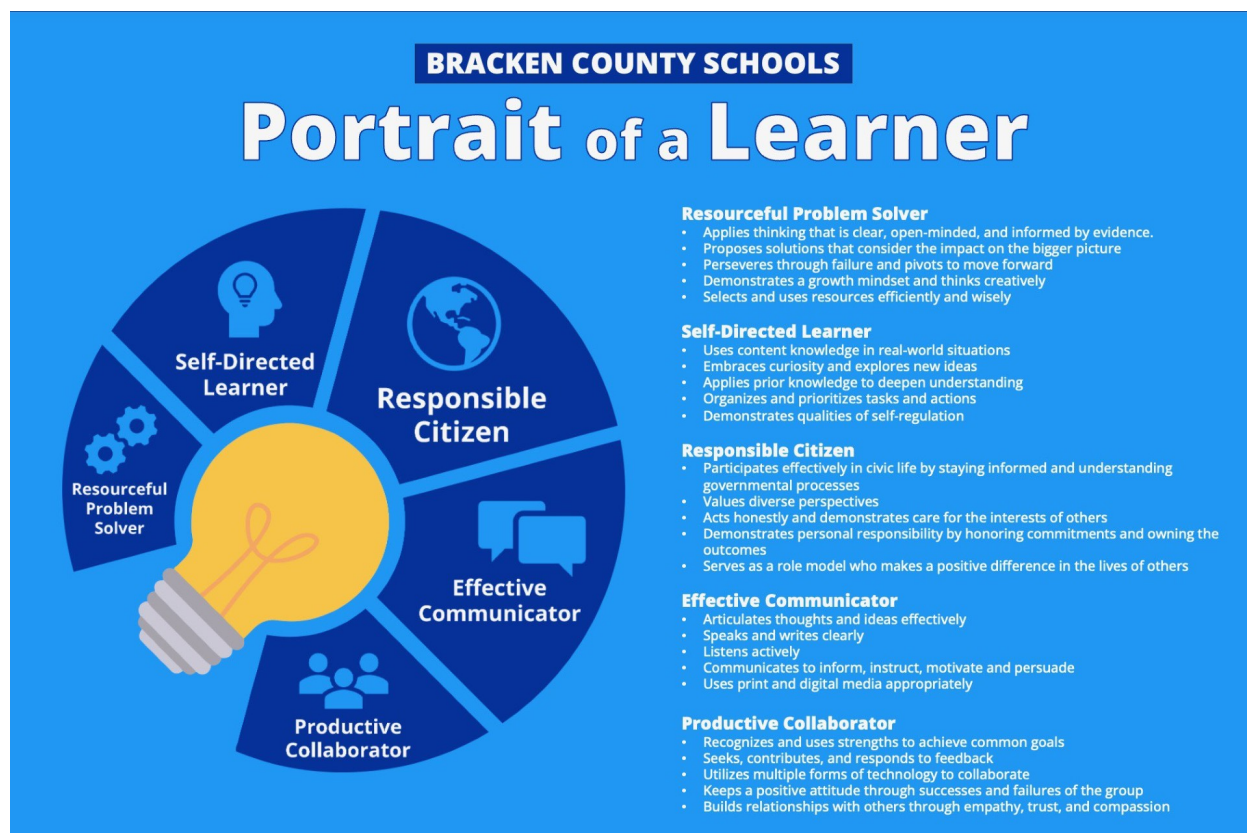


Bracken County School District

Portrait of a Learner FAQs



Q. WHAT IS A PORTRAIT OF A LEARNER? A Portrait of a Learner is an agreed-upon set of school- or district-level aspirations for what every learner will know and be able to do when they leave school. The Bracken County PoL identifies the skills students need to be prepared for an ever-changing world that is driven by technology, human interaction and innovation. This portrait gives school leaders and teachers the framework to design instruction in a way that promotes real-world competencies and job readiness.

Q. WHY CREATE A PORTRAIT OF A LEARNER FOR BRACKEN COUNTY?

Now, more than ever, learning experiences must not be just about mastering challenging academic content. They also must be more intentional about fostering communication, collaboration, adaptability and other skills our students need to thrive. Kentucky's accountability system needs to provide a more comprehensive picture of what student success means. The Bracken County Portrait of a Learner (PoL) will help do this by serving as a more balanced measure, demonstrating a student's growth and achievement and ensuring their readiness for civic life, career or college.

Q. WHO WAS INVOLVED IN CREATING BRACKEN COUNTY'S PORTRAIT OF A LEARNER?

In May of 2022, a state-level Portrait of a Learner (PoL) subcommittee of the Kentucky Board of Education (KBE) met for the first time to begin creating a statewide PoL for districts to adopt as their own or to serve as a model for districts in the creation of their own local portrait. In February of 2023, a committee of Bracken County Schools' stakeholders was formed consisting of parents, local community and business leaders, educators, school board members, and administrative personnel. This committee planned, collaborated, and adopted the Bracken County School District PoL.




Q. WHAT ARE THE FIVE COMPETENCIES IDENTIFIED IN BRACKEN COUNTY'S PORTRAIT OF A LEARNER?

1. Resourceful Problem Solver
2. Self-Directed Learner
3. Responsible Citizen
4. Effective Communicator
5. Productive Collaborator

Q. HOW DOES BRACKEN COUNTY'S PORTRAIT OF A LEARNER TIE INTO ASSESSMENT?

A benefit to having a districtwide PoL is to use it as an anchor for a new, more balanced assessment and accountability system. This is a different approach than our current testing and accountability system, which uses high-stakes testing to determine student and school performance. Assessments that support a PoL typically involve more than just memorizing facts or completing simple tasks. Examples of some of these types of assessments include:

- Performance-based: These assessments require students to demonstrate their understanding by applying their knowledge and skills in real-world situations. Examples include projects, presentations and group work.
 - Portfolios: A collection of students' work that showcases their learning progress over time, such as essays, research papers and creative projects. Portfolios help assess students' ability to make connections and synthesize information across different subjects and experiences.
 - Open-ended questions: Questions that do not have a single correct answer encourage students to think critically and creatively. They can be used in written assignments, discussions or exams.
- 

-
- Collaborative assessments: Assessments that involve working in groups promote teamwork, communication and problem-solving skills. Examples include group projects, debates or case studies.
 - Self-assessments and reflection: By reflecting on their learning process, students develop the skills to become more aware of their strengths and areas for improvement. This can involve journaling, goal setting or self-assessment checklists.
 - Peer assessments: Providing feedback to classmates helps students learn from each other's perspectives and promotes critical thinking and empathy.
 - Formative assessments: Ongoing assessments, such as quizzes, assignments and in-class activities provide regular feedback and help students identify areas for improvement, deepening their learning and understanding.

Ultimately, a PoL drives better alignment among future employers, communities, higher education providers and families who depend on our schools to prepare students for their plans after high school.

Q. WHAT DOES THIS MEAN FOR BRACKEN COUNTY'S STUDENTS AND PARENTS?

- Parents and students should expect to see the identified skills woven into classroom learning experiences beginning in elementary school and reinforced until graduation.
 - Parents and students can anticipate assessments that match the requirements of a changing, dynamic world. New assessments should assess the skills that prepare students for the workplace and civic engagement.
- 