



Tanque Verde Unified School District #13

4201 N. Melpomene Way., Bldg. 10








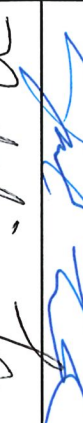
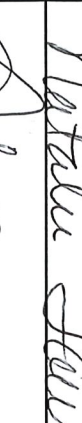

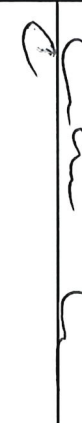
Tucson, Arizona 85749

Phone: 520.749.5751 ▪ Fax: 520.749.5400 ▪ www.tanqueverdeschools.org

RFP 2025-001 Groundskeeping Amendment #1

This amendment is released to all interested parties.

1. A non-mandatory pre-bid meeting was held on April 11, 2025. The Sign-In Sheet is attached for reference.
2. Questions and Answers contained within this Amendment are intended to clarify and/or change items within the bid as a result of discussions at meeting and walk-through of the sites.
3. Amendment to RFP Page 30 – Work Order Process School Dude
TVUSD no longer utilizes SchoolDude. The following procedure will need to be followed: Vendor should provide a work ticket system that is accessible to district personnel for the reporting of needed work and tracking of tickets completed.
4. All other terms and conditions remain the same.
5. End of Amendment #1.

Name	Signature	Title
Ruben Arrieta		UAA Landscape
JAMES ALLEN		AAT Landscape PBM
Taylor Bales		ASm
Rebekah Murrens		BDM Santa Rita
Sharla Scheibel		BDM Santa Rita
Luke Simon		BS Burlington
MATHIAS BELLS		Yellowstone Landscape
Jake Vardis		Yellowstone
Natalie Tarrise		BDM Landainers
PLYSSA FOLKER		Landainers
Carlos Garcia		

Q1. What are the school hours at the 4 sites?

Please see bell schedules linked here

[Tanque Verde High School](#)

[Emily Gray Junior High School](#)

[Tanque Verde Elementary School](#)

[Agua Caliente Elementary School](#)

Q2. What field and landscape equipment does the district have for the fields?

We have a slice aerator, plug aerator, rotary mowers, drop and broadcast spreaders.

Q3. Does the district have a preference for Electric vs Gas powered equipment?

We have no preference for the use of gas vs electric power equipment. All equipment should be appropriate to the task and have adequate power or fuel to complete the task in available time.

Q4. Is tilling the sandboxes and fall protection under kids playground equipment part of the expected scope of work?

Not at this time.

Q5. Can crews remove foliage or planting that appear to be dead or unhealthy?

No foliage should be permanently removed without discussion with site maintenance or grounds personnel regardless of its perceived condition.

Q6. Are there restrictions on herbicides that can be used on site?

All state and federal regulations for the application and management of pest control chemicals on school sites are in effect at all of our facilities. As long as regulations and application protocols on the labels are followed and proper notifications are made, there are no restrictions in place. However it is strongly preferred that no tracer dyes be added to these materials.

Q7. Who is responsible for weed control in mechanical spaces?

The vendor should plan to service these spaces as needed.

Q8. Could we get actual boundary lines around each school? We don't want to assume these. On Map Exhibit 3, can you please clarify the boundaries for these 3 sites, so that we can propose each correctly if they are separate billing?

See exhibits A - D with property lines shown and retention basins highlighted (Pima Maps)

Q8. Can we get the retention area (4x per year) and the Open Growth Areas (2x per year) listed in the RFP noted as well?

See exhibits A - D with property lines shown and retention basins highlighted (Pima Maps)

Q9. Can you elaborate on what irrigation materials are expected to be provided by the contractor and would that would be included in the contract?

PVC pipe, PVC fittings, sprinklers, solenoids, various emitters, control valves, decoders, valve rebuild kits, PVC Glues and solvents. District will maintain and keep in good repair: Timers, wiring to valve boxes, backflow valves, and main cold water supply lines to irrigation systems.

Q10. Do you know how many areas/planters at each location there are so that we can calculate extra time that we need for this manual watering?

No more than 1 per school site.

Q11. What are the Bell times at the schools so that we can accommodate this policy. (Hours blowers may be used)

See answer Q1.

Q12. For the weed control on page 27, I want to make sure that the proposal entails:

- Pre-Emergent on Rock and Open areas 2x per year
- Post Emergent on Rock and Open areas 2x per year
- Turf Pre-Emergent 1x per year
- Turf Post emergent 1-2x?

On this one, do you want us to include 1 or 2x - so all proposals accepted have the same applications?

Price should reflect the maximum specified here, 2x per year.

Q13. On page 32 It has Add Alternatives for these sports fields.

- Are these fields not included at all in the initial RFP for the mowing, turf spraying, etc?

They are intended to be included.

- What alternatives should be considered for the care of these fields? Mowing, weed control, broadleaf, etc?

Additional weed control measures not previously specified such as broadleaf. Fertilization, aeration, dethatching, emergency repairs due to flooding, acts of nature.

Q14. Who is your current landscaping company or has this been an in house team? What is the current dollar amount?

We appreciate your interest in understanding our current situation. However, we need to ensure the confidentiality of our ongoing relationship. Our focus now is on the opportunities presented by the new RFP and seeking proposals that meet those requirements

Q15. What Landscaping Licenses/Certifications are required?

Personnel applying pesticide must follow regulations of AZDA regarding certification to apply pesticides anywhere on our campuses. The operations must be supervised by a Licensed QP and applied by a licensed CA. See Q6.

Q16. What Irrigation Licenses/Certifications are required?

There are no certification requirements in place for irrigation work.

Q17. What are the required Termination Provisions?

See RFP

Q18. Who is currently providing these services for Tanque Verde Unified School District?

See Q14

Q19. Will the district allow current team members to be absorbed by the successful bidder? And Q20. Will current staff remain at district?

Yes, all personnel expected to be transferred to contractor.

Q21. Will the district be open to negotiate the following statement? "IF CONTRACTOR DOES NOT FULLY STAFF WORK TEAM, A CHARGE BACK OF \$160.00 PER PERSON PER DAY WILL BE DEDUCTED FROM THE MONTHLY INVOICE."

We are willing to work with the awarded vendor, but reserve the right to enforce this statement.

Q22. For bidders that have also submitted for the Custodial RFP, are there options to share bundled pricing for both services or should all pricing be kept separate based on RFP response?

Do not combine proposals.

Q23. Is the district looking to have a person at each site daily?

This is not an expectation, most companies rotate a crew through the sites.

Q24. Can storage be provided?

Some limited space for storage of chemicals is available but there is no storage for large equipment or material.

Q25. Will the district fine \$160 per employee if hours missed by employee is covered by weekend work or OT hours?

See Q20.

Q26. Will the account manager be required to be dedicated to this district only?

This is not an expectation, if the contractor employs a crew and the crew has an onsite foreman responsible for completion of day to day work, there is no expectation that the account manager be dedicated to the district full time.

Q27. Is irrigation controllers' part of an "Smart" online managed system or traditional system that do not use online or Wi-Fi methods of controlling?

Irrigation controllers are not "Smart" and not integrated into an online or Wifi control scheme. Plan for multiple "traditional" controllers and timers.

Q28. How many man hours can the contractor expect to be watering daily during summer?

Contractor is responsible for ensuring that plantings receive proper water based on weather conditions. It is expected that contractors utilize their professional expertise to make determinations about watering times and amounts throughout the year.

Q29. Are hoses available nearby or will a watering tank system be required?

Without context this question cannot be answered. There are hose bibbs available through our campuses, use of hoses across walkways should be considerate of campus activity and time of day.

Q30. Are blower restrictions due to noise during school hours? Can battery power blowers be used?

See Q3. Noise near classrooms during school hours as well as dust are major considerations.

Q31. In the pricing page for "Add Alternatives", can you confirm the pricing is for overseeding?
Not overseeding?

Pg 32. Item #1 Add Alternates should read "Overseeding"

Q32. If overseeding, should we add additional reel type mower and additional services and materials to properly maintain "sport" type fields?

There is no need for a reel type mower for athletic fields. Other services or materials should be specified.

Q33. Will we be maintaining or brushing the artificial turf, or just regularly blowing that area free of debris?

Maintenance of artificial turf regularly calls for blowing and debris removal. Maintenance schedules differ but most recommend brushing semi-annually and ensuring stakes are firmly and uniformly anchored.

Q34. Does it need to be stated from vendors that they will or will not be subcontracting out services?

Yes. District requests prior notification of intent to subcontract and reserves the right to refuse subcontracted service providers for any reason.

Q35. Does it need to be stated from vendors that we will or will not be using any of your equipment there?

Yes.

Q36. I know that you wanted overseed in a line item or "extra" on the proposal. What else would you want in a line item?

See Q13.

Q37. Do you want any of the sports fields included in the initial price on pg 32, or separate on the lines provided?

Use lines provided.

Q38. On those fields for "add alternatives" you only want mowing only price? Not any additional care such as fertilization?

Include aeration and fertilization as additional Add Alternates

Q39. On the weed control chemical, this can make a cost difference for all of the proposals depending on the quality of chemical used. Is there a certain chemical that you would want to recommend for the rock and turf weed control, so that all proposals are comparable?

District will not prescribe specific chemicals, selection of appropriate pesticides is the duty of licensed professionals. Products should be chosen for their effectiveness to meet the control objective. See Q6.

Exhibit A

Tanque Verde High School

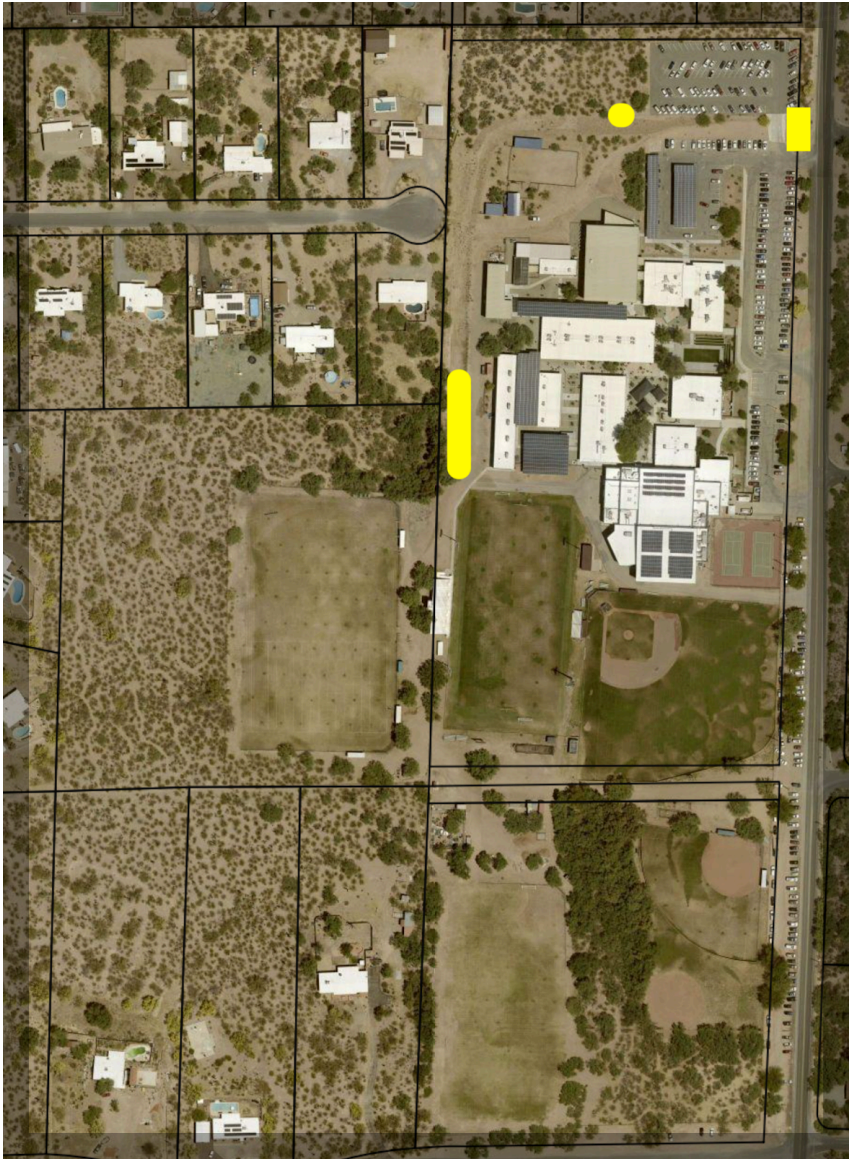


Exhibit B

Emily Gray

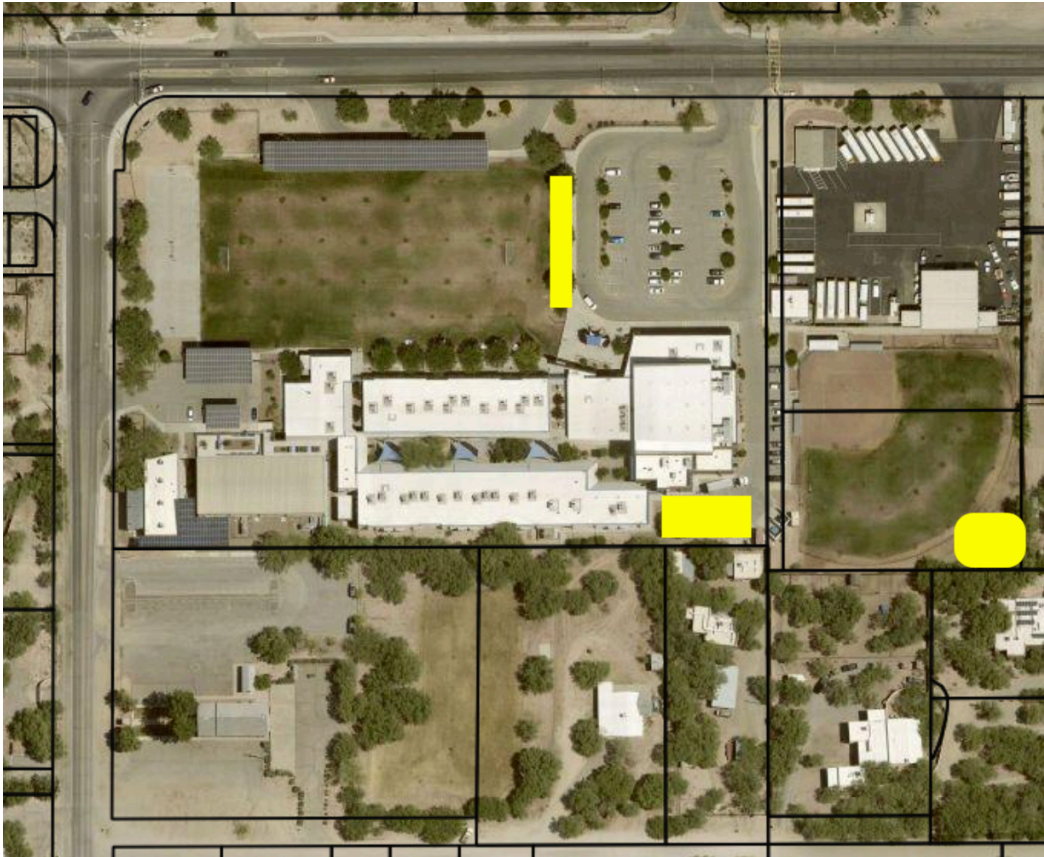


Exhibit C

Agua Caliente



Exhibit D

Tanque Verde Elementary

