

Future Worlds

FOCUS QUESTION

How do people feel when they face challenges?

NOTICE AND WONDER

Look at the science-fiction stories you will read in this lesson. What do you notice? What do you wonder? Discuss your ideas with a partner.

SHADES OF MEANING

Circle the word in each pair that shows the stronger feeling. Think of words that describe similar feelings. Write the words in the same row.

startled / shocked

excited / pleased

terrified / nervous

surprised / amazed

I think ____ shows a stronger feeling than ____ because ____.

I added the word ____ because it means something like ____.



from Cog
by Greg van Eekhout



The Flying Test
by Sara Matson



Down to Earth
by Salima Alikhan



from COG

by Greg van Eekhout

Cog is a robot who looks like an ordinary boy. He stays with Gina, the scientist who built him.

- 1 I remain bad at sleeping. Gina said sleep is difficult for me because my brain is always working, thinking, and learning, and she didn't want to "go monkeying around" in my brain before she fully understood what was going on inside my head.
- 2 Gina is not very good at sleeping, either. Even though she is not a robot, we have some of the same **bugs**.
- 3 On one such night, I prepared two mugs of hot cocoa in the microwave oven, which is a machine that is not capable of learning but is very good at making hot cocoa. Gina was in the laboratory, sitting at her computer. I put her mug on the desk.
- 4 Usually she would say "thank you," which is standard behavior. And then I would say "you're welcome" or "no problem" or "think nothing of it," all of which are standard responses. But this time she didn't say anything. She didn't even seem to notice I was there. She just stared at her computer screen with abnormally **hydrated** eyes. A drop of fluid fell down her cheek. 🖐️

bugs = mistakes that cause unexpected results

hydrated = containing water

Stop & Discuss

What is Cog doing?
What is Gina doing?

Use details from the text to explain your ideas.

- 5 A face stared out from the screen. Eyes, brown like mine. Skin the same shade of brown as my syntha-derm sheath. Hair like mine, only longer, tied into a ponytail that hugged the left side of the neck.
- 6 At the bottom of the picture were three letters: ADA.
- 7 “Who is that?”
- 8 “Oh!” Gina said, startled. She looked at me, then at the mug on her desk. She took a sip. “Thank you, Cog.”
- 9 “Think nothing of it.”
- 10 I was pleased that we had returned to standard behavior.
- 11 I waited a moment, and when Gina did not answer my question, I again asked whose face was on the computer screen.
- 12 Gina wiped the fluid from her face. “That’s ADA,” she said. “Your sister.”
- 13 I blinked, **processing**.
- 14 “That’s how I think of you two. Brother and sister. Because I designed and built you both.”
- 15 I continued to blink.
- 16 Gina’s eyes continued to hydrate. She sniffed.
- 17 “Where is ADA now?” I asked.
- 18 Gina clicked her mouse, and the face disappeared. Her screen went into sleep mode. “I lost her.”

Soon, Cog would find out where ADA had gone. 

processing = figuring out the meaning

Stop & Discuss

What does Cog learn about ADA?

Place a star next to paragraphs that explain who ADA is and where she is.



Make Inferences

- Authors do not explain everything in a story. As you read, you make inferences to figure out what is happening in the story.
- An **inference** is an idea about the text that makes sense based on details in the text and what you already know.
- Making inferences helps you understand a story.

Reread/Think

Reread *Cog*. Using what the text says and what you know, what inferences can you make about what is happening in the story? Complete the chart with this information.

| What the Text Says | + | What I Know | = | Inference |
|---|---|--|---|-----------|
| "A drop of fluid fell down her cheek." (paragraph 4) | | Wet tears fall down people's cheeks when they cry. | | |
| "'Where is ADA now?' I asked. Gina clicked her mouse, and the face disappeared. . . . 'I lost her.'" (paragraphs 17 and 18) | | | | |

The Flying Test

by Sara Matson

It's September 3012, and Captain Amara Rivera is coming home after leading a journey to Jupiter's moon Europa. Everyone's excited about the astronaut's return—except her daughter, Luna, who's thinking about passing her flying test before she turns thirteen.

examiner = person who gives and grades a test

navigating = following a route or path


Stop & Discuss

What happens during and after Luna's test?


Use details from the text to explain your ideas.

During the test, ____

After the test, ____

- 1 Luna rode into the test pod, sat down, wiped her sweaty hands on her jacket, and took a few deep breaths. Finally, the **examiner's** voice filled the pod: *Luna Rivera, your flying test will now begin.*
- 2 An hour later, Luna exited the testing area feeling totally drained. Hovering had been easy, but parking hadn't gone so well. She hadn't dented anything, but she had scratched the test pod while **navigating** into a narrow slot between an aerovan and a rover hybrid. She hoped that what she'd done correctly was enough to earn her a passing grade.
- 3 She had just reached the aerobus station when her communication watch beeped with a message.
- 4 TEST RESULT: FAIL. LICENSE DENIED. 

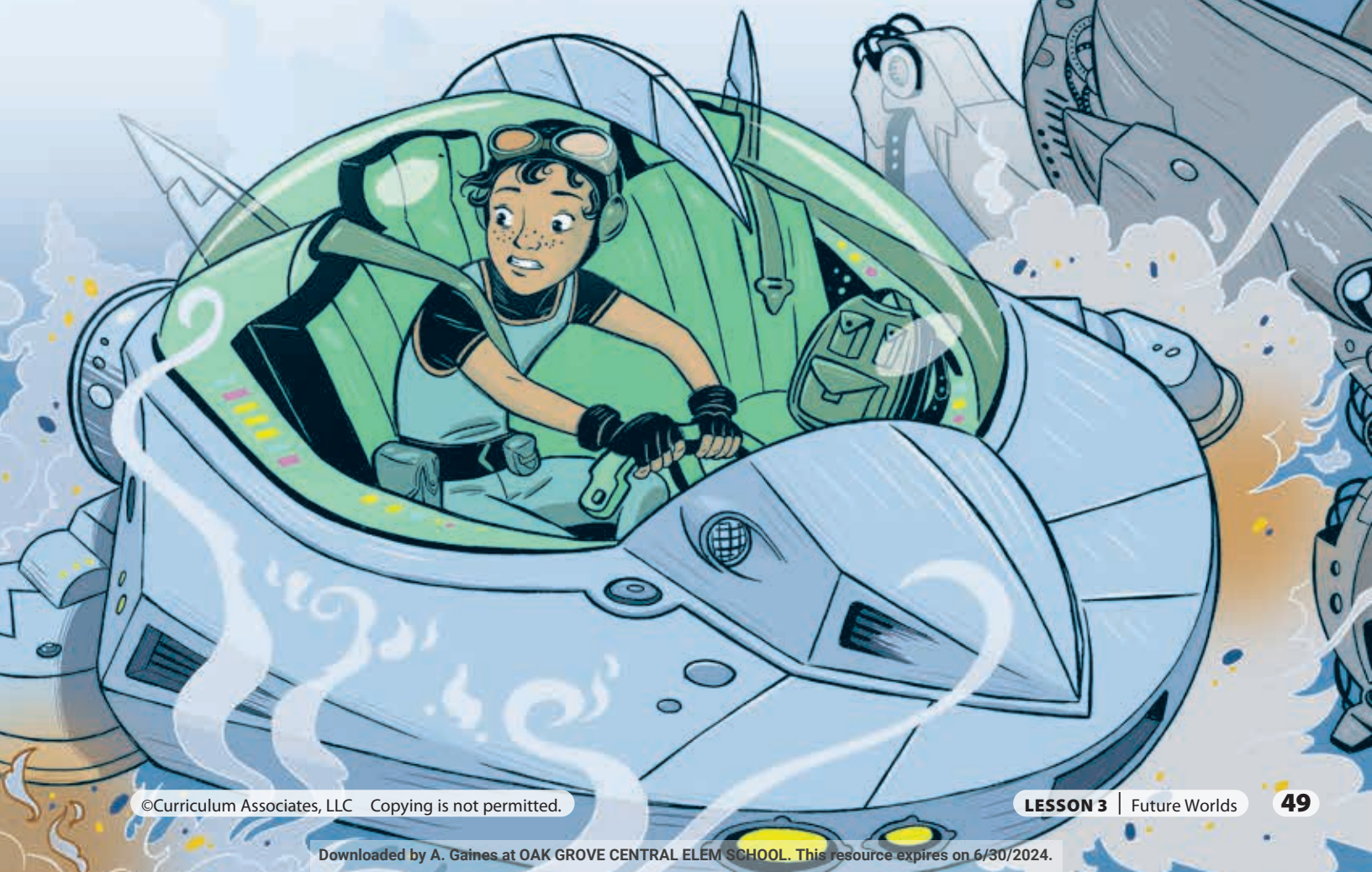
POD
BAY

- 5 No! Luna got on the bus and slumped into a seat.
- 6 Another beep. This message was from Dad.
- 7 *MOM HOME. CAN'T WAIT TO SEE YOU. HURRY!*
- 8 Mom. Luna felt like she'd eaten a pound of moon dust. It was the worst thing that had ever happened to her! She pictured the headlines: *Famous Flier Amara Arrives Home to Husband and Daughter, the Flying Failure.*
- 9 After the bus let her off, Luna walked home as slowly as possible, and once she was outside the apartment, she hesitated. What if she just didn't go in?
- 10 Another beep. *WHERE ARE YOU?*
- 11 There was no avoiding it. She slid her watch under the scanner and unlocked the door. 

Stop & Discuss

What does Luna do after she gets her dad's message? Why?

Underline details in paragraphs 8 and 9 that show what she does.





Stop & Discuss

What does Luna learn about her mom?

Use details from the text to explain your ideas.

12 “Luna?” Dad called as she stepped inside the entryway.

13 She sighed. “Yep.”

14 She heard footsteps and then both her parents were there, and Mom was hugging her. In spite of how awful she felt—or maybe because of it—the hug was pretty good. You couldn’t get hugs like that over cosmovision.

15 “You’re late,” Dad said. “How did the test go?”

16 Luna looked down. “I failed. I messed up on parking.”

17 Surprisingly, Mom laughed. “That pesky parking is the curse of the Riveras. Haven’t you heard about the person who crashed her test pod and—”

18 “Made the examiner spill raspberry smoothie all over himself? That was *you*?” Luna said. “I thought it was just a story.”

19 Mom grinned. “That was me, famous astronaut Amara Rivera, at twelve years old.”

20 “No way,” Luna said, suddenly feeling as weightless as if she were in an antigravity chamber.

21 “It’s true,” Mom said, sliding her arm around Luna’s shoulder. “I’ll tell you about it.”





Make Inferences

- **Text evidence** is a detail or example from the text you use to support an idea.
- Use text evidence to support an inference.

Reread/Think

Reread "The Flying Test." Complete the chart and support each inference with text evidence.

| Question | Inference | Text Evidence |
|--|-----------|---------------|
| What inference can you make about Luna's mom from the introductory text? | | |
| How does Luna feel in paragraphs 5–9? | | |
| How does Luna feel in paragraph 20? | | |



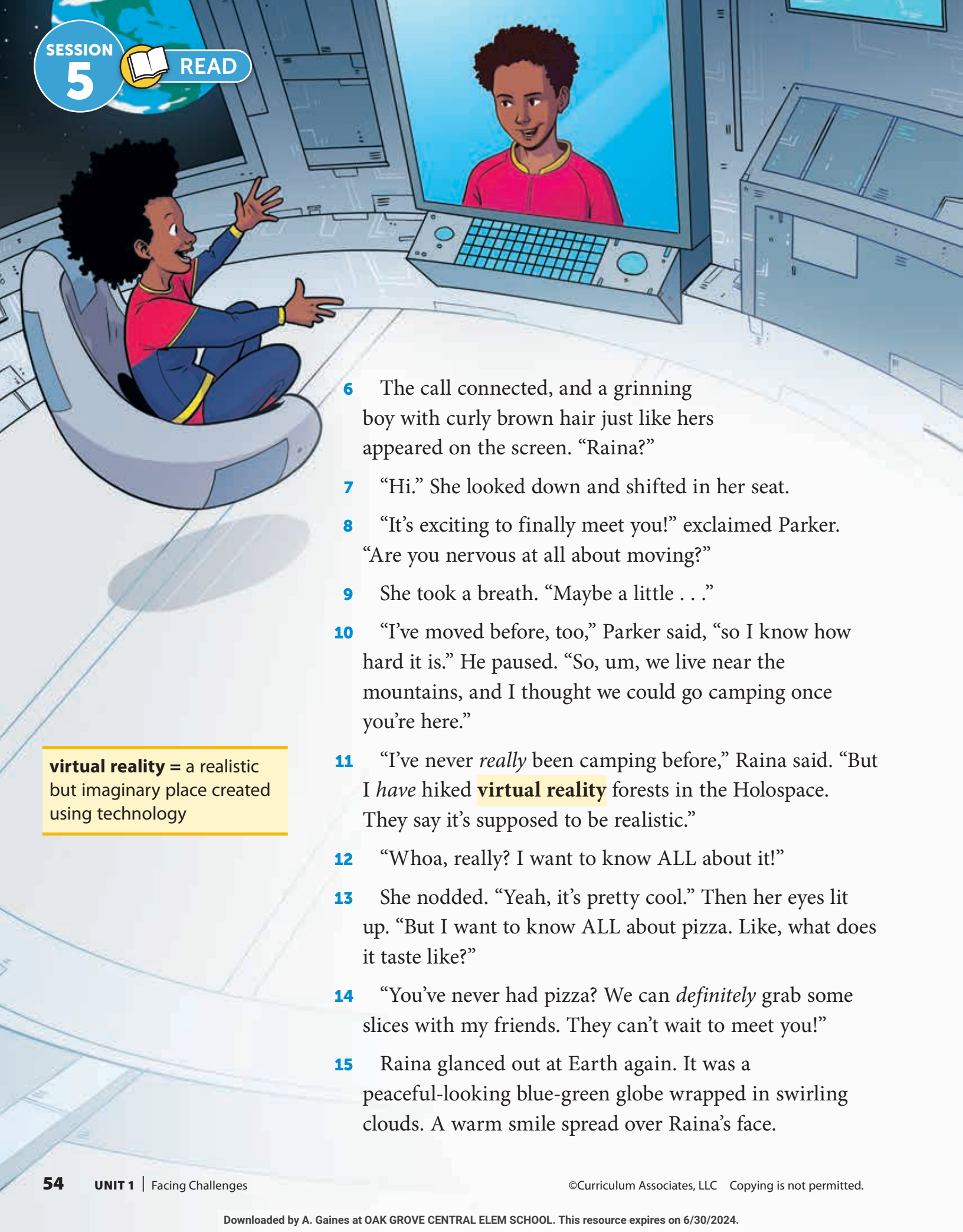


Down to Earth

by Salima Alikhan

- 1 “I don’t want to move to Earth,” Raina told Kestra, her best friend at the space station. “I’ll miss you *terribly*,” she said, sniffling.
- 2 Kestra floated down on her hoverboard next to Raina and hugged her. “I’ll miss you, too,” Kestra said, her green antennae shaking, “but think of all the cool stuff there, like swimming and *pizza*.” Kestra’s antennae now waved with excitement. “All those Earth movies we’ve watched make pizza look so yummy—molten cheese on hot bread!”
- 3 Raina’s family was originally from Earth, but she’d grown up on the space station. Because of her mom’s new job, the family was relocating to a place Raina barely knew. “Mom scheduled a video call with my cousin Parker on Earth. What am I supposed to say to someone I’ve never met? What if he thinks I’m strange?”
- 4 “Keep an open mind and wait to see what happens,” Kestra suggested. “Your cousin might surprise you.”
- 5 Later that afternoon, Raina chewed on her nails as she waited for the call to start. Outside her window, Earth appeared so cold and distant.





virtual reality = a realistic but imaginary place created using technology

- 6 The call connected, and a grinning boy with curly brown hair just like hers appeared on the screen. “Raina?”
- 7 “Hi.” She looked down and shifted in her seat.
- 8 “It’s exciting to finally meet you!” exclaimed Parker. “Are you nervous at all about moving?”
- 9 She took a breath. “Maybe a little . . .”
- 10 “I’ve moved before, too,” Parker said, “so I know how hard it is.” He paused. “So, um, we live near the mountains, and I thought we could go camping once you’re here.”
- 11 “I’ve never *really* been camping before,” Raina said. “But I *have* hiked **virtual reality** forests in the Hologspace. They say it’s supposed to be realistic.”
- 12 “Whoa, really? I want to know ALL about it!”
- 13 She nodded. “Yeah, it’s pretty cool.” Then her eyes lit up. “But I want to know ALL about pizza. Like, what does it taste like?”
- 14 “You’ve never had pizza? We can *definitely* grab some slices with my friends. They can’t wait to meet you!”
- 15 Raina glanced out at Earth again. It was a peaceful-looking blue-green globe wrapped in swirling clouds. A warm smile spread over Raina’s face.



Respond to Text

Reread/Think

Reread "Down to Earth." Choose the best response to each question.

1. PART A

Based on paragraph 2, which is the **best** inference about Kestra?

- A. She misses eating food on Earth.
- B. She travels to Earth often.
- C. She wants to move with Raina.
- D. She cares a lot about Raina.

PART B

Which sentence from paragraph 2 **best** supports the answer to Part A?

- A. "Kestra floated down on her hoverboard next to Raina and hugged her."
- B. "... think of all the cool stuff there, like swimming and *pizza*."
- C. "Kestra's antennae now waved with excitement."
- D. "'those Earth movies we've watched make pizza look so yummy.'"

2. Reread this sentence from paragraph 5 of the text.

Outside her window, Earth appeared so cold and **distant**.

Which definition for *distant* **best** matches its meaning in the sentence?

- A. unclear
- B. far away
- C. not connected
- D. round



Reread/Think

- 3.** Which sentence from the text **best** supports the inference that Raina is nervous about talking to her cousin?
- A.** "... Raina chewed on her nails as she waited for the call to start."
(paragraph 5)
- B.** "... boy with curly brown hair just like hers appeared on the screen."
(paragraph 6)
- C.** "'It's exciting to finally meet you!'" (paragraph 8)
- D.** "A warm smile spread over Raina's face." (paragraph 15)

Write

How do Raina's feelings change in the story? Use two pieces of text evidence to support your response.

[illegible]

WRITING CHECKLIST

- ☐ I answered the question.
- ☐ I included two pieces of text evidence.
- ☐ I used what I already know to make an inference.
- ☐ I used correct spelling, capitalization, and punctuation.



Respond to the Focus Question

How do people feel when they face challenges?

Reread/Think

Choose one story to reread.

TEXT: _____

- 1.** In the story you chose, what challenge does a character face? How do they feel?

- 2.** Do their feelings change? What changes them?

Talk

In your group, discuss the following questions.

Which character do you relate to the most?

How does that character feel? Why? What helps them feel better?

If you were the character's friend, how would you try to help them feel better?

I relate to ___ because ___.

First, ___ feels ___ because ____.
Then, ___ helps them feel better.

I would try to help
them feel better by ____.

Write

How do people feel when they face challenges? What helps them feel better?

Use examples from the stories to support your ideas.