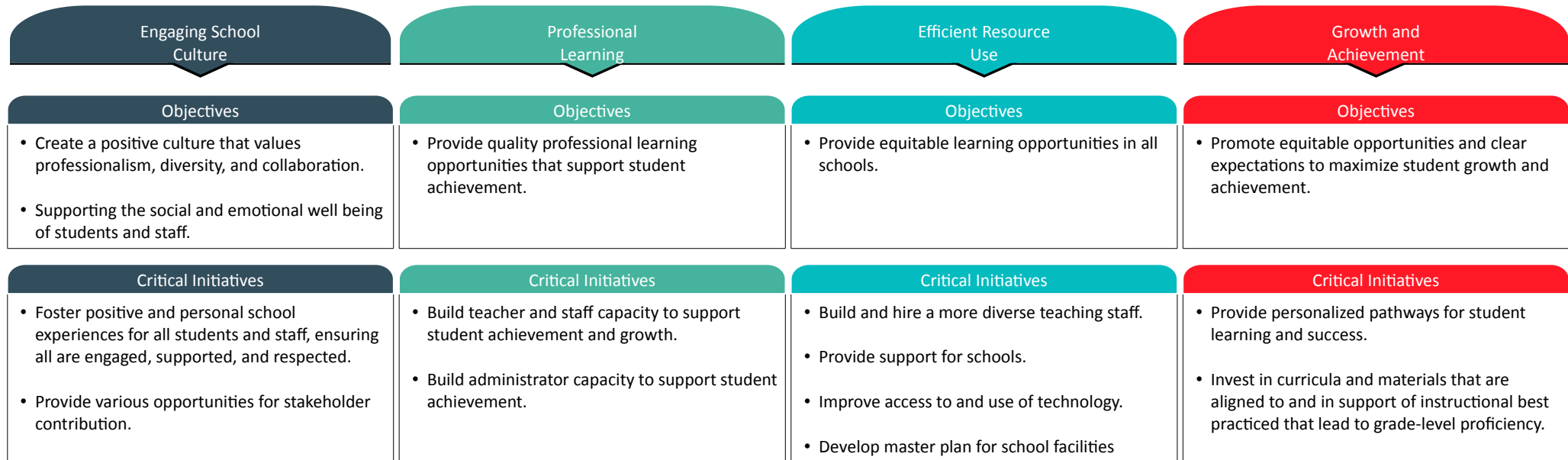
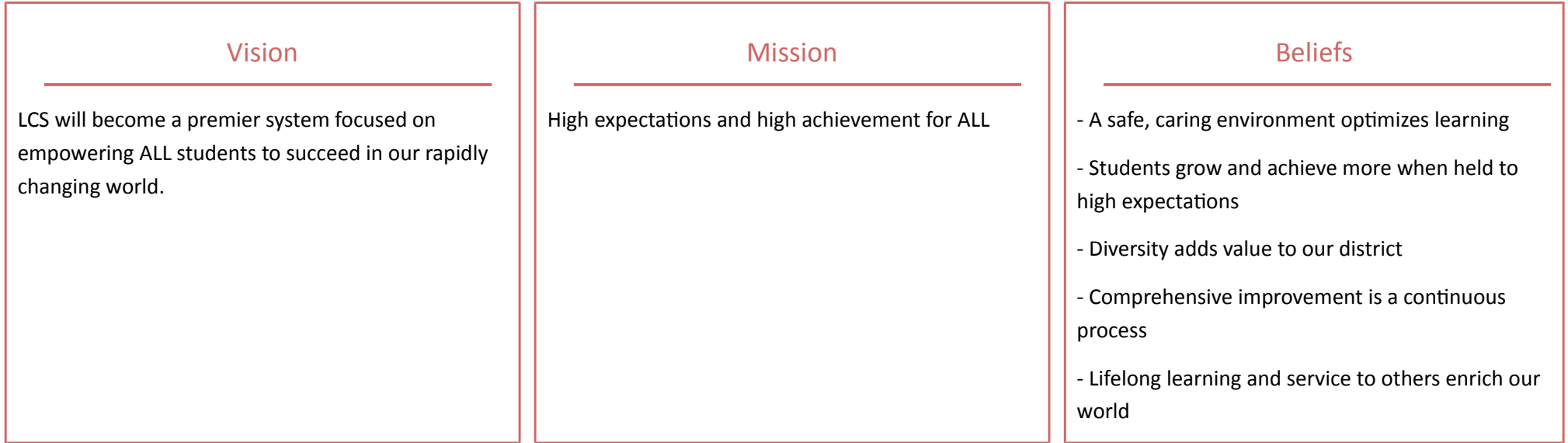


Elkmont High School ACIP Plan 2021-2022

Elkmont High School



Critical Initiatives

- Share the story of Limestone County Schools with the community and world at large.
- Collaborate to create district SEL Goals.
- Schools develop local SEL Plans.

Critical Initiatives

Critical Initiatives

Critical Initiatives

- Implement process and procedures that promote equity in instruction and assessment.

Key Measures

- 9 month attendance report
- Kronos Attendance Report
- Student Ambassadors feedback
- Survey Results

Key Measures

- Criterion-referenced assessments
- Graduation Rate

Key Measures

- Personnel Report
- Creating an effective schedule
- Teacher's use and knowledge of technology
- List of future projects in order of priority

Key Measures

- College and career readiness indicators
- Data from programs such as IXL, Imagine Learning
- Assessments
- Walkthroughs
- RTI/PST Process
- Essential Standards PLC