



Family Engagement is one of the most powerful predictors of social-emotional development, educational attainment and success in school and life for children and youth.

(Global Family Research Project, 2018)

Louisiana believes that children are our highest priority; families are our partners; educators are valued professionals; graduates must be ready; equity matters; choice expands opportunities; schools are invaluable to communities; and our future is bright!

PRIORITY ALIGNMENT

- Cultivate high-impact systems, structures, and partnerships.
- Remove barriers and create equitable, inclusive learning experiences for all children.

FOCUS AREA

- Communication and guidance for family engagement and support
- School choice for students and families

WHAT IS PARENT AND FAMILY ENGAGEMENT?

Family engagement is an **empowering partnership** among families, educators, practitioners and the community with **shared responsibility** for the **personal success** of children and youth.

- An **Empowering Partnership** means that families, educators, practitioners and the community cultivate and sustain relationships that are active, equitable and respectful to support the learning and social-emotional growth of children and youth.
- **Shared Responsibility** means that families, educators, practitioners and the community collaborate and communicate to promote positive educational outcomes for children and youth.
- The **Personal Success** of children and youth means the accomplishment of their desired visions and goals.

LOUISIANA'S DEPARTMENT OF EDUCATION PARENT AND FAMILY ENGAGEMENT GOALS



Bring **AWARENESS** to the importance of Parent and Family Engagement.

- Host webinars, share at Teacher Leader Summit and Regional Trainings, engage in community outreach via social media and other public events



CONSTRUCT PLATFORMS that ignites engagement from the state level administration down to the classroom.

- Developed an inclusive state level Parent and Family Engagement council, engage 100% of district coordinators, partner with Idle Minds Technology to incentivize engagement for all stakeholders statewide



Meaningfully engage stakeholders to gain **INPUT** that drives initiatives.

- Administer statewide family survey, host town hall meetings, increase two way communication and provide opportunities for capacity building that will foster meaningful feedback/input



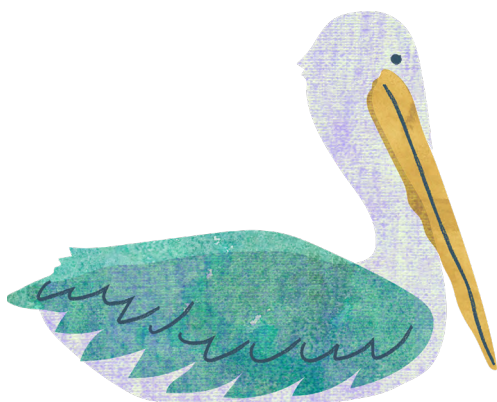
Cultivate engagement that **ENERGIZES LEARNER SUCCESS**.

- Progress monitor and evaluate the impact that the initiative has on overall student performance by referencing multiple data points

Please contact LAPAFEC@la.gov with questions.

OUR CURRENT STATE, TRANSFORMED THROUGH ENGAGEMENT.

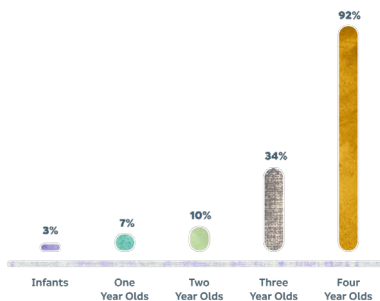
By cultivating high impact partnerships with the families and community stakeholders, it is the goal of the Louisiana Department of Education to transform learner outcomes. To ensure students enter kindergarten ready, we will promote practices that recognize families as the critical foundation and their child's first and most influential teacher. Additionally, we will ensure that fourth and ninth graders are prepared for grade level content by guaranteeing the learning environments have a family engagement action plan that incorporates specific steps and activities, ongoing evaluation, and data analysis to support a cycle of continuous improvement.



CRITICAL GOALS

1: STUDENTS ENTER KINDERGARTEN READY

2019-2020 Percent of Economically Disadvantaged Children Accessing Publicly Funded Early Childhood Programs



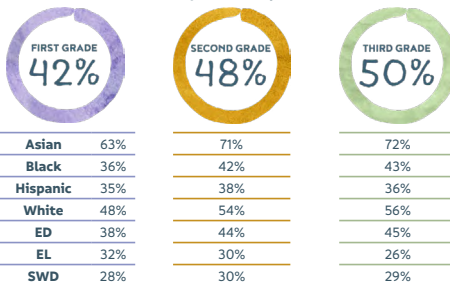
Kindergarteners On or Above Level on All Literacy Assessments Combined (Fall 2020)



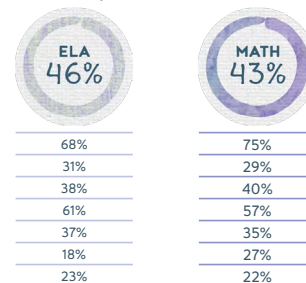
Asian	50%
Black	34%
Hispanic	26%
White	48%
Economically Disadvantaged (ED)	36%
English Learners (EL)	24%
Students with Disabilities (SWD)	24%

2: STUDENTS WILL ACHIEVE MASTERY LEVEL ON THIRD-GRADE ASSESSMENTS AND ENTER FOURTH GRADE PREPARED FOR GRADE-LEVEL CONTENT

Percentage of Students On and Above Level on Literacy (Fall 2020)



Percentage of Grade 3 Students Performing at Mastery and Above on 2019 LEAP



Grade 4 NAEP Results: Percent Proficient and Above

ELA			Math		
Louisiana	National Average	Difference	Louisiana	National Average	Difference
25.7	34.3	-8.6	28.8	40.4	-11.7

3: STUDENTS WILL ACHIEVE MASTERY LEVEL ON EIGHTH-GRADE ASSESSMENTS AND ENTER NINTH GRADE PREPARED FOR GRADE-LEVEL CONTENT

PERCENTAGE OF GRADE 8 STUDENTS PERFORMING AT MASTERY AND ABOVE ON 2019 LEAP



4: STUDENTS WILL GRADUATE ON TIME

2019 COHORT GRADUATION RATE

