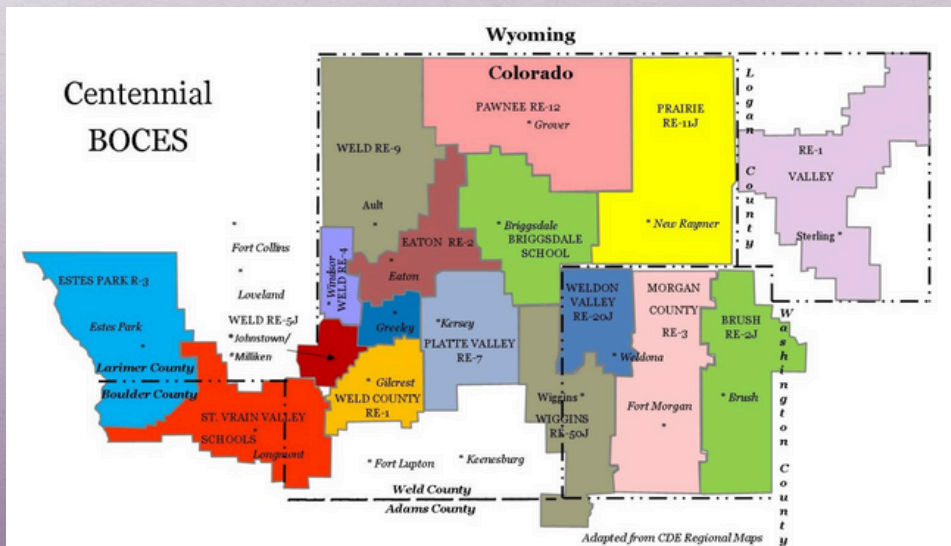


Centennial BOCES is an agile and responsive educational service cooperative that provides irresistible services and programs. Our organizational culture fosters partnerships, innovation, efficiency, leadership and excellence that are embraced by Centennial BOCES and the community.

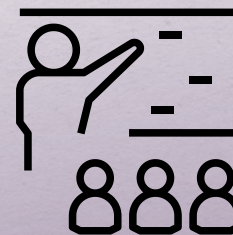


# CENTENNIAL BOARD OF COOPERATIVE SERVICES



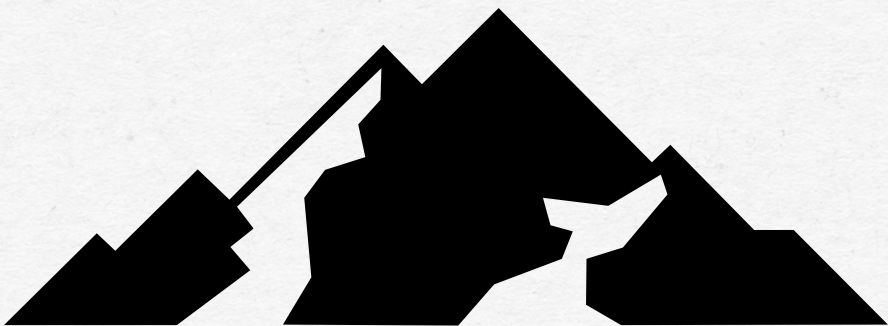
# CENTENNIAL BOCES

## Programs & Service Guide



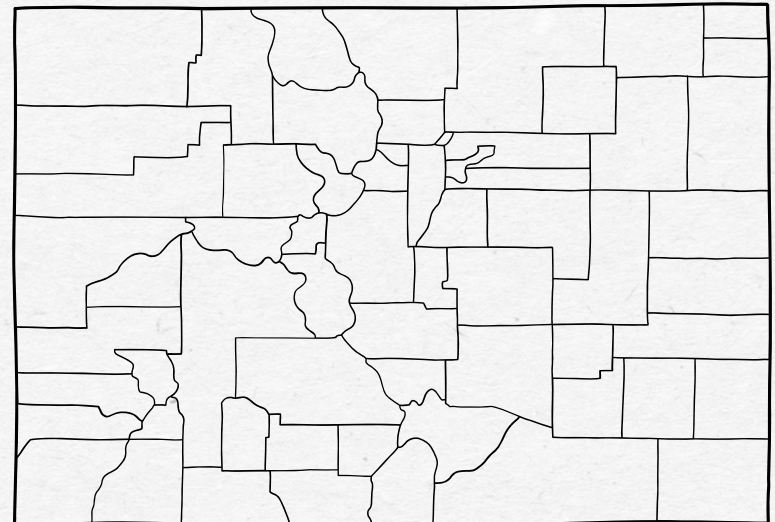
# PURPOSE OF PROGRAMS/ SERVICE GUIDE

This guide has been prepared to assist the Centennial Board of Cooperative Educational Services (Centennial BOCES) participating districts in selecting programs and services that are available. The services outlined in this guide are evidence of the combined commitment of Centennial BOCES and our member school districts to share resources which provide the best possible programs for students and staff. The services listed in the following pages reflect the requests, recommendations, and suggestions of the participating districts. Programs/Services are expanded, modified or eliminated each year to meet the priorities of the member districts. Please contact the department director if more information is needed.



# COLORADO PUBLIC SCHOOL COOPERATIVES

Colorado Revised Statutes 22-5-101 thru 22-5-122, passed in 1965, allow public schools to enter into cooperative ventures. There are currently twenty (20) cooperatives in the state and 163 (out of 178) of Colorado's school districts now belong to a BOARD OF COOPERATIVE EDUCATIONAL SERVICES (BOCES). Cooperatives/BOCES are voluntarily established by participating districts to provide programs/services cooperatively which would be difficult or impossible individually, or can be accomplished more economically and/or more effectively on a shared basis.



# WHO WE ARE

## VISION

Centennial BOCES is an agile and responsive educational service cooperative that provides irresistible services and programs. Our organizational culture fosters partnerships, innovation, efficiency, leadership and excellence that are embraced by Centennial BOCES and the community.

## MISSION STATEMENT

Through collaboration, provide value-added resources that enrich educational opportunities for all students.



# WHERE TO FIND US



## Greeley Office

2020 Clubhouse  
Drive Greeley, CO  
80634 Phone: 970-  
352-7404 Fax: 970-  
352-7350



## Morgan County Office

821 West Platte Ave.  
Ft Morgan, CO 80701  
Phone: 970-867-8297  
Fax: 970-867-6129



# CENTENNIAL

## BOARD OF COOPERATIVE SERVICES

Centennial Board of Cooperative Educational Services (Centennial BOCES) is a public, educational agency governed by a citizen board of directors composed of one school board member from each member school district and is advised by the member districts' superintendents.

Centennial BOCES functions as a cooperative service agency for 17 member school districts in North Central Colorado.

- Briggsdale School
- Brush RE-2J
- Eaton RE-2
- Estes Park R-3
- Greeley D6
- Morgan County RE-3
- Pawnee RE-12
- Platte Valley RE-7
- Prairie RE-11J
- RE-1 Valley
- St. Vrain Valley Schools
- Weld County RE-1
- Weld RE-4
- Weld RE-5J
- Weld RE-9
- Weldon Valley RE-20J
- Wiggins RE-50J



Centennial BOCES provides services to member school districts with approximately 80,000 students in a geographical area of approximately 6,611 square miles in Adams, Boulder, Larimer, Logan, Morgan, Washington and Weld Counties. In addition to providing services to our member districts, Centennial BOCES provides contract services for other non-member districts in the North Central, North East and East Central regions of Colorado and statewide. Centennial BOCES is funded by participating member and non-member districts on a prorated basis and from a combination of specific program grants and contracts from private, state and federal sources.

# Executive Staff

## Executive Director

Dr. Randy Zila  
Office: 970-352-7404 ext. 2121  
Cell: 970-679-1876  
Email: rzila@cboces.org

## Chief Financial Officer

Erich Dorn  
Office: 970-352-7404 ext. 2720  
Cell: 970-768-5457  
Email: edorn@cboces.org

## Director of Federal Programs

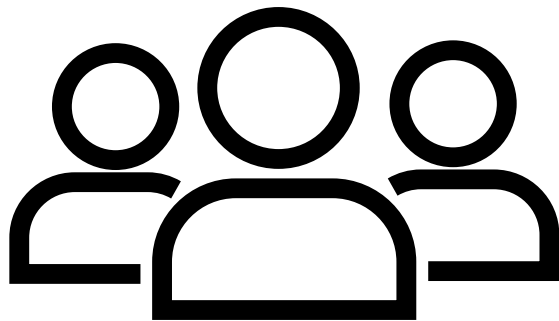
Maria Castillo  
Office: 970-352-7404 ext. 1110  
Cell: 970-405-4451  
Email: mcastillo@cboces.org

## Director of Innovative Education Services

Mark Rangel  
Office: 970-352-7404 ext. 1122  
Cell: 970-302-7180  
Email: mrangel@cboces.org

## Director of Special Education

Jocelyn Aldridge  
Office: 970-352-7404 ext. 1104  
Cell: 303-898-8179  
Email: jaldrige@cboces.org



## ADMINISTRATIVE SERVICES DEPARTMENT

**Communications:** Centennial BOCES shares communication resources with member districts. Public relations and media partnerships are among the services provided.

**Fiscal /Business Services:** The Business Services office provides budgeting, accounting, banking, investment, accounts receivable, accounts payable, fiscal grants management, financial consulting, and oversight of the annual financial audit for the \$17 million annual Centennial BOCES budget. The Business Services office provides human resources and financial/ fiscal services for all Centennial BOCES locations: Greeley and Morgan County. These services include processing monthly payroll, accounts payable, and the financial coordination for the Centennial BOCES.

**Human Resources (Personnel/Payroll):** The Human Resources office provides personnel/payroll services for approximately 75 full-time and 35 part-time staff. Specific services provided are contracts, payroll services, employee benefits, state and federal HR and payroll reporting, as well as fingerprinting.

**Policy/Legislation:** The Executive Director, Centennial BOCES Superintendents Advisory Council and Board of Directors monitor state and federal legislation affecting school districts and Centennial BOCES. The Executive Director's office offers policy development and analysis to member school districts, as well as interim leadership. In addition, board-superintendent workshops and mentoring/coaching for superintendents is available.

# Board of Directors

**Briggsdale RE-10J:** Katie Ford  
**Brush RE-2J:** Brandy Hansen  
**Eaton RE-2:** DeAn Dillard  
**Estes Park R-3:** Brenda Wyss  
**Greeley D6:** Kyle Bentley  
**Morgan County RE-3:** Christine Brown  
**Pawnee RE-12:** Christy Loyd  
**Platte Valley RE-7:** Kristine Bauer  
**Prairie RE-11J:** Susie Kester  
**RE-1 Valley:** Michelle Sharp  
**St. Vrain Valley Schools:** Karen Ragland  
**Weld County RE-1:** Nancy Sarchet  
**Weld RE-4:** Karen Trusler  
**Weld RE-5J:** Michael Wailes  
**Weld RE-9:** John Batka  
**Weldon Valley RE-20J:** Tiffany Chapin  
**Wiggins RE-50J:** Derrik Kyte



# Superintendents' Advisory Council Members

**Briggsdale RE-10J:** Rick Mondt  
**Brush RE-2J:** Marsha Cody  
**Eaton RE-2:** Jay Tapia  
**Estes Park R-3:** Ruby Bode  
**Greeley D6:** Dr. Deirdre Pilch  
**Morgan County RE-3:** Rob Sanders  
**Pawnee RE-12:** Bret Robinson  
**Platte Valley RE-7:** Dr. Jeremy Burmeister  
**Prairie RE-11J:** Chris Burr  
**RE-1 Valley:** Dr. Marty Foster (interim)  
**St. Vrain Valley Schools:** Dr. Don Haddad  
**Weld County RE-1:** Kimberly Bloeman  
(interim)  
**Weld RE-4:** Michelle Scallon  
**Weld RE-5J:** Scott Nielsen  
**Weld RE-9:** Troy Daman  
**Weldon Valley RE-20J:** Ben Bauman  
**Wiggins RE-50J:** Trent Kerr



# FEDERAL PROGRAMS DEPARTMENT



**Consolidated Federal Grants:** The responsibilities of Centennial BOCES include providing technical assistance and administrative support to schools and districts receiving funding under federal grants. Additionally, Centennial BOCES facilitates the writing, submission, implementation and evaluation of the Consolidated Grant Application for the following districts: , Briggsdale School, Brush RE—2J, Eaton RE-2, Pawnee RE-12, Platte Valley RE-7, Prairie RE-11J, RE-1 Valley, Weld County RE-1, Weld RE-9, Weldon Valley RE-20J, and Wiggins RE-50J.

## **The following federal grants are included in the Consolidated Application:**

- Title I Part A: Improving the Academic Achievement of the Disadvantaged
- Title II: High Quality Teachers, Principals, and School Leaders
- Title III: English Language Learners
- Title IV: Well Rounded Education

## **Regional Migrant Education Program:**

- Title I Part C: Provides funding for supplementary services for migrant children who meet the federal definition for this program. Children between the ages of 3 - 21 years can qualify based on their parent's or guardian's work in an agriculturally related field. Centennial BOCES is home to the Migrant Education Program serving the North Central, North East and East Central Regions of Colorado with over 2,000 students enrolled. This program places a strong value and focus on parental involvement and supplemental support services for students. Currently, Centennial BOCES administers this program for 54 school districts.

## **McKinney-Vento Homeless Education:**

- This program strives to break down the barriers that limit school success for students that experience homelessness. It builds upon existing collaborations with Migrant Education, Title I, Special Education, and community service agencies to address the needs of students, families, and educators. This program focuses on providing information and referrals to community agencies, assistance with meeting a student's basic needs, and staff training in the identification and support of students experiencing homelessness.

# INNOVATIVE EDUCATION SERVICES DEPARTMENT

The Innovative Education Services (IES) department is the one-stop resource for learning at every level. Staff in IES are dedicated to providing high quality professional learning opportunities and technical assistance to districts within the North Central Region. IES is committed to meeting the unique needs of the many participating districts.

## Administrator Induction Program:

- IES facilitates the administrator induction program. New administrators seeking a professional administrator's license participate in the year-long program. Program content is based on the Colorado Administrator Standards and is determined by the needs of those in the induction cadre.



## Alternative Teacher Licensure Program (ATLP):

- ATLP is a one-year program through which participating individuals become licensed teachers. All ATLP candidates must:
    - Hold a bachelor's degree
    - Hold a statement of eligibility from CDE in the content area for which they will teach
    - Be hired in a full-time, full-year teaching assignment that matches the statement of eligibility
    - Meet the Teacher Quality Standards for Colorado by the end of the one-year program.
  - The cost to participants in ATLP is \$6,300/\$7,350, in-district/out-of district. Participants receive support through a CBOCES coach, the building principal, and a building mentor. Intensive training is provided (face-to-face and online) during the program.
- ## Alternative Principal Licensure Program (APLP):
- APLP is designed for the educational leader who would like to become a licensed principal in Colorado but has not completed a traditional principal licensure program through a university. The program is an intensive one-year "on-the-job" training that includes self-assessment activities, research-based applications, best-practice integration, and field studies analysis. Each of these areas directly aligns with the Colorado Principal Quality Standards and Elements.



**Centennial BOCES High School:**

- CBHS is an alternative school designed to be a resource to school districts and students in northern Colorado. The program began in 1998 and was designed for at-risk students and those who don't thrive in the traditional high school classroom. CBHS offers a self-paced, competency based curriculum that allows students the opportunity to earn a high school diploma and gain knowledge and skills crucial for entry into the workforce or other educational organizations. This program benefits students and school districts by providing an alternative path for students to graduate as well as lowering drop-out rates and increasing enrollment and graduation rates.

**Gifted/Talented (G/T) Administrative Unit:**

- IES coordinates the work of 10 regional districts that comprise the Centennial BOCES G/T Administrative Unit.

**IConnect High School:**

- The vision of IConnect HS is to acknowledge every child can learn through challenging and rigorous learning experiences along with character development, career exploration, and workplace readiness skills to transition students into a post-secondary life. It provides an educational learning experience for students who have not been successful in the traditional high school setting. IConnect HS is committed to providing an academic program which is student centered, positive and safe.

**Northern Colorado Learning Consortium (NCLC):**

- NCLC provides member school districts with information on current state, and national issues. Monthly meetings are held throughout the school year. NCLC sponsors the June Educator Training (JET) held shortly after schools dismiss each summer which offers a variety of learning opportunities for teachers.

**Online Learning/Professional Development:**

- Development and delivery of online professional development courses are an integral part of IES. The scope of work includes projects with districts, individual schools, and state-wide to create unique and effective professional development solutions using a variety of technologically assisted formats that include: blended e-learning, online learning communities, self-paced online modules, facilitated online modules, and online support systems for traditional professional development activities.

**Perkins Consortium:**

- Carl D. Perkins Act grant funding is used to increase the quality of career and technical education in school districts. IES coordinates the grant submittal, allocation, and financial oversight of 6 regional districts that comprise the Centennial BOCES Perkins Consortium.

### Teacher Induction Program:

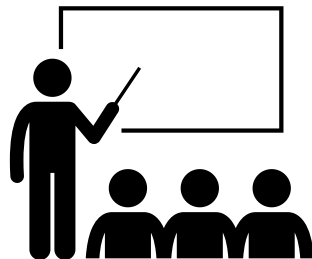
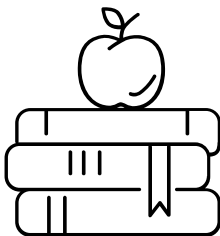
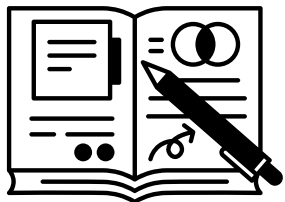
- IES facilitates the teacher induction program. Initial licensed teachers seeking a professional teaching license participate in the one-year program. Program content is based on the Colorado Teacher Quality Standards.

### Technical Assistance and Facilitation:

- IES staff support the research-based belief that the most effective professional learning is conducted within the context of a professional learning plan that is focused on building-based goals that impact the learning experiences and achievement levels of students. Therefore, the best models of professional learning provide activities that include follow-up at the school over time as new knowledge and skills are implemented.

### IES staff are available to assist districts and schools with:

- Program planning and evaluation
- Curriculum instruction and assessment
- School improvement
- District and building leadership skills
- Coaching for instructional improvement



**Through collaboration,  
provide value-added  
resources that enrich  
educational opportunities for  
all students.**



# SPECIAL EDUCATION DEPARTMENT

The Special Education Department serves as the administrative unit for Special Education services for the following Weld County and Morgan County School districts:

- Briggsdale School
- Brush RE-2J
- Eaton RE-2
- Pawnee RE-12
- Platte Valley RE-7
- Prairie RE-11J
- Weld County RE-1
- Weld RE-9
- Weldon RE-20J
- Wiggins RE-50J



Funding for Special Education programs is provided through federal, state and local sources. The Centennial BOCES service providers work collaboratively with each member district's general and special education teachers to provide services to students with disabilities.

Currently, there are approximately 60 staff members who provide special education services for students in member districts. There are approximately 1500 students, preschool through high school, who receive special education services through this department.

Eligible students may receive services from a variety of service providers depending on their educational needs.

# Services provided include the following:

## **Audiology/Hearing Services:**

- Assessment, consultative, and direct services for students with hearing impairments (Teacher of the Deaf and Hard of Hearing: provides itinerant services for students with hearing impairments).

## **Child Find:**

- Screening/assessment and identification of children birth to 21 years of age who are suspected of having a disability.

## **Early Childhood Education:**

- Direct/Indirect services for three to five year olds.

## **Extended School Year (ESY):**

- Direct/consultative services for children with disabilities who qualify for instruction beyond the regular school year.

## **Nursing:**

- Consultation/direct services for health related issues for preschool to high school students.

## **Occupational Therapy/Physical Therapy:**

- Motor services provided for educational needs.

## **Out of District Placement:**

- Specialized programming provided that does not exist within the Administrative Unit to meet the unique needs of a student.

## **School Psychology:**

- Assessment, case management, and consultation.

## **School to Work Alliance Program (SWAP):**

- In cooperation with the Department of Vocational Rehabilitation, provides students that have a disability, ages 16-25, with opportunities for employment within the community.

## **Sierra School:**

- Specialized programming for students with autism and emotional disabilities in Weld County. Social Work: Assessment collaboration, family intervention/agency linkages.

## **Speech/Language:**

- Instruction, assessment, consultation. STEPS (day treatment program): Specialized program for students with significant emotional disabilities in Morgan County.

## **Transition Services:**

- Preparation for school to community transition.

## **Vision/Assessment:**

- Consultative and direct services for students with visual disabilities.

A variety of services are provided to member districts to enhance teacher awareness of special education issues, recommendations for staffing patterns, program development, and special education teacher training programs. Assistance and staff development are also provided to the districts and students through the services of the Assistive Technology, Behavior, Autism, and TBI Teams. Area-wide in-services are provided during the year to all district and Centennial BOCES special education staff.

# TECHNOLOGY SERVICES DEPARTMENT

## **CBOCES Technology**

### **Support:**

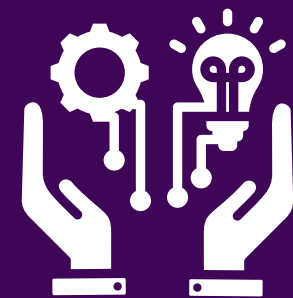
- Internal support provided across Centennial BOCES departments, including technology equipment recommendations, technical equipment and supply purchases, service and repair of existing technology, setup of new computer equipment, and technical training for current and new staff.

### **Financial Data Services:**

- Consortium based approach to Infinite Visions financial and payroll/HR software with 6 member districts, Centennial BOCES, and another BOCES. Software updates, support, and training provided through Centennial BOCES as well as Tyler Technologies.

### **Student Information Services:**

- Infinite Campus student software support is provided to 9 school districts by Centennial BOCES. This service includes on-site training in Infinite Campus software as well as remote support. End of year reporting is also provided to the participating districts.





# ACCESSIBILITY

Centennial BOCES is committed to providing equitable access to our services which includes providing accessible digital content for all members of our community. We desire to meet the requirements of Section 504 of the Rehabilitation Act of 1973 which is a crucial piece of legislation prohibiting discrimination on the basis of disability in programs and activities that receive federal financial assistance.

## Accessibility Practices

- Good faith efforts are being made to ensure that our website complies with web accessibility standards as outlined by the [Web Content Accessibility Guidelines \(WCAG\)](#) version 2.1, level AA criteria. These guidelines not only help make technology accessible to users with sensory, cognitive and mobility disabilities, but ultimately to all users, regardless of ability.

CBOCES serves 17 member school districts in North Central Colorado.

