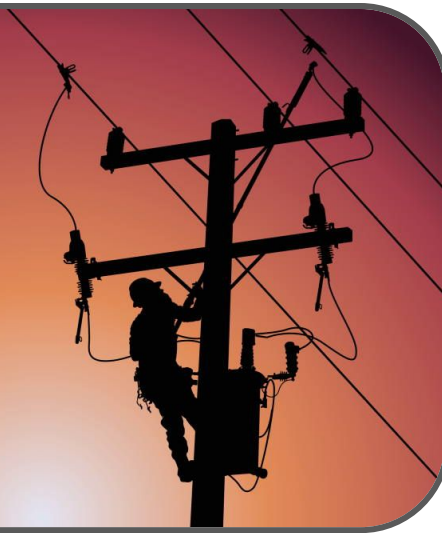


# Lineman



Job Openings	Salary Expectations
Less than Average	Starting = \$24,000
Growth Rate: 4%	Average = \$50,000
	Top = \$74,000

TCHS Graduates Who Are  
Linemen You May Know

Carson DeLoach

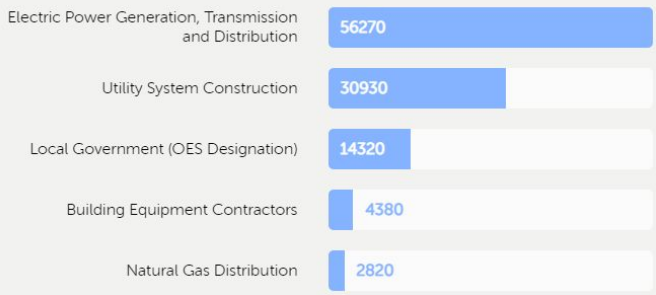
## Essential Skills

organizational skills  
critical thinking  
problem solving  
troubleshooting  
time management  
Knowledge of math  
work well with a team or independently

## What does a Lineman do?

- Clean, tin, and splice corresponding conductors by twisting ends together or by joining ends with metal clamps and soldering connections.
- Install & make repairs to various types of power cables and wires.
- Trim trees that could be hazardous to the functioning of cables or wires.
- Read and interpret wiring diagrams.
- Inspect and test power lines and auxiliary equipment to locate and identify problems, using reading and testing instruments.
- Climb poles or use truck-mounted buckets to access equipment
- Work outdoors in various types of weather.

## Jobs in this Career



## Education Needed

Some workers in this occupation are trained on the job and need no further education than a high school diploma, some receive training in electrical repair by attending vocational schools or through military service.

## A Day in the Life of a Lineman

Electrical Power-Line Installers install and service cables or wires used to distribute electrical power from plants that generate the power to households and businesses. There is a sub-branch of installers, called Telecommunication Line Installers, who install and service wires and cables used to provide cable television, telephone, and Internet services to residential and commercial consumers.

As a Electrical Power-Line Installer, you will erect utility poles and transmission towers to string cables and wires and provide electrical service to customer premises. You will use a variety of different construction equipment to dig holes and trenches to needed to place the poles and towers and servicing equipment to repair or maintain electrical power between the power generating plant and the consumer. You will be responsible for transporting material and equipment in utility trucks, drive long distances to make repairs, and climb poles and towers to install or repair lines and cables.

You will perform your work outdoors in all types of weather elements. Expect to perform work in hazardous conditions, so you will be required to wear special safety equipment and adhere to specific safety procedures to counteract the dangers you will face on the job.