

Academic Preparation for Student Success



23 CSU Campuses

CSU The California State University



The logo for The California State University, featuring the letters 'CSU' in white on a red rectangular background.

The California
State University



Academic Preparation
= College Success

- The CSU requires that all entering freshmen students be evaluated in terms of their preparation to complete first-year courses in Written Communication and Mathematics/Quantitative Reasoning.
- Course placement is based on the **Multiple Measures** model.

Multiple Measures for Placement Include:

Standardized Tests:

CAASPP/EAP,
ACT,
SAT,
AP,
IB, and
CLEP

**High School
Grade Point Average
(GPA)**
(10 & 11th grade)

High School and College Coursework*

*Coursework must be completed with a grade of "C-" or better.

**High School Math
Grade Point Average
(GPA)**
(9, 10th & 11th grade)

***NOTE:** ACT and SAT test scores no longer used for admission but considered for English/math placement. Students may submit scores, if available.

Remember to release your scores to the CSU at the time of testing—they will NOT be used for admissions.

2023-24 CAASPP Computer Adaptive Test – EAP Release and Instructions, English Language Arts

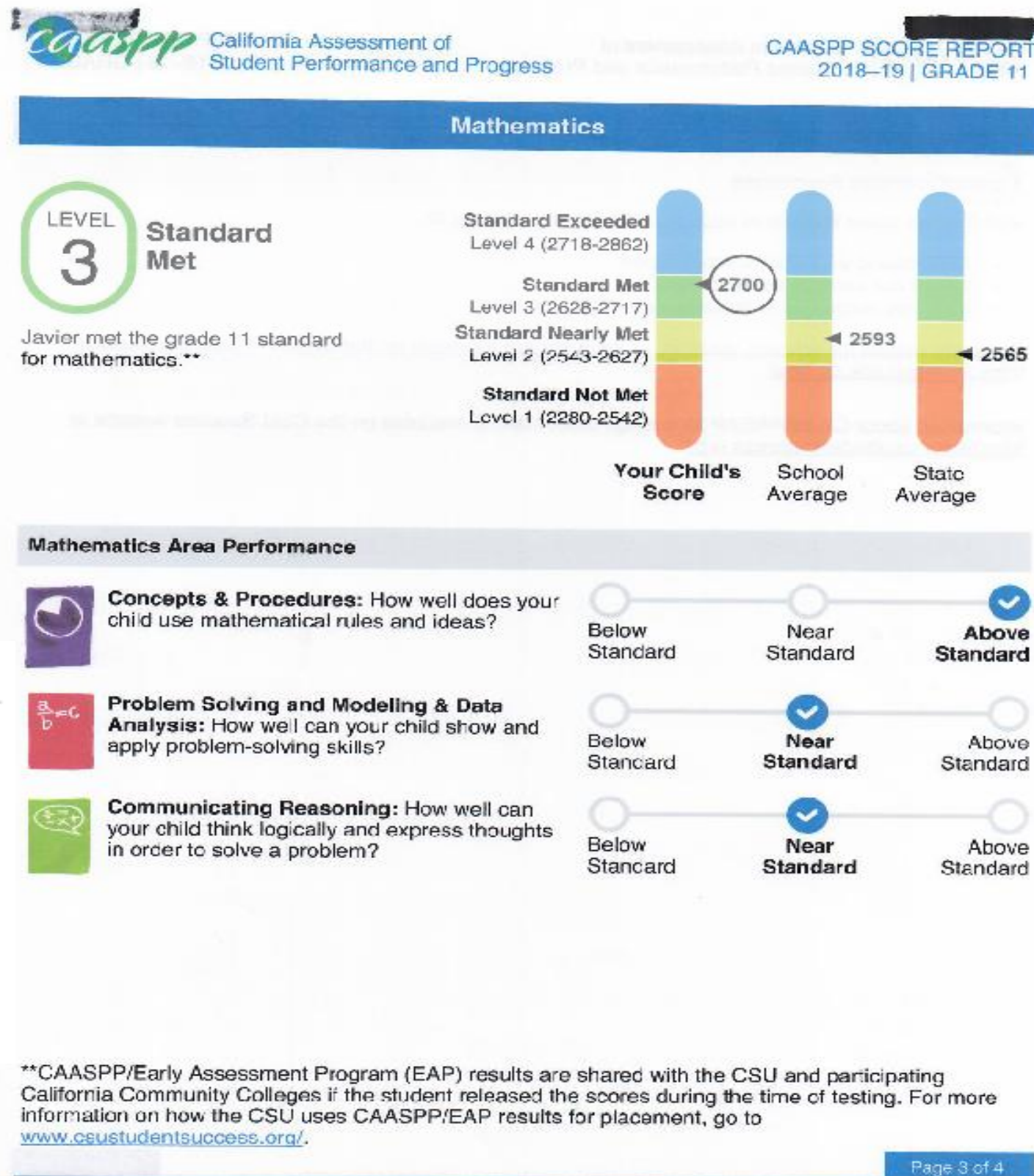
Early Assessment of Readiness for College English Language Arts

The CAASPP Early Assessment Program (EAP) results will assist the California State University (CSU) system and some California Community Colleges (CCC) in providing you with an early assessment of your readiness for college-level English Language Arts coursework. Your CAASPP EAP results are not required or used for admissions. Your CAASPP results will be provided to the CSU system by selecting the release circle. If you select the "Do Not Release" circle, you will be required to submit the results at a later date if requested. Some, but not all, CCCs accept EAP scores. You may submit a copy of your score report to a CCC if requested.

Release Authorization

By selecting the "Release" circle, I acknowledge that I am voluntarily releasing the results of my English Language Arts college readiness assessment to be shared with appropriate officials at the California State University (CSU).

Release Do Not Release



First-Year Placement: English

Fulfilled GE English Requirement (A2)

Placement I

Advanced Placement (AP) Test Score:

- 3 or above: AP Language and Composition
- 3 or above: AP Composition and Literature

College Transfer Coursework:

- Completed college course (C- or better) that satisfies CSU GE Area A2 (written communication)

If one criteria met above, they fulfilled Area A2
Will enroll in the next English course to meet bachelor's degree requirements

If NO, go to next placement column →

Enroll in GE English Course (A2)

Placement II

CAASPP/EAP English Test Score:

- Standard Exceeded
- Standard Met and completed 12th grade approved year-long English course (C- or better)*

High School Courses and GPA:

- Weighted GPA 3.3 or above
- GPA 3.0 or above and completed 12th grade approved year-long English course (C- or better)*
- GPA 3.0 or above and completed Honors English course
- GPA 3.0 or above and 5 or more years of high school English

Optional: If Scores Available:

SAT English Test Score:

- 550 or above
- 510 – 540 and completed 12th grade approved year-long English course (C- or better)*

ACT English Test Score:

- 22 or above
- 19 – 21 and completed 12th grade approved year-long English course (C- or better)*

If Student meets one criteria above, they may enroll in A2 GE English without support

If NO, go to next placement column →

Enroll in Supported GE English Course (A2)

Placement III & IV

Student will participate in Supportive Pathways for 1st year Students



First-Year Placement: (Pre-STEM, STEM, Other Math Intensive Majors)

Fulfilled GE Math Requirement (B4)

Placement I

Advanced Placement (AP) Test Score:

- 3 or above: Calculus AB
- 3 or above: Calculus BC
- 3 or above: AP Statistics
- 3 or above: AP Computer Science Principles

International Baccalaureate (IB) Test Score:

- 4 or above on Math Higher Level (HL)

College Level Examination Program (CLEP) Score:

- 50 or above on: Calculus, College Algebra, College Algebra-Trigonometry, Pre-Calculus, or Trigonometry

College Transfer Coursework:

- Completed college course (C- or better) that satisfies CSU GE Area B4 (math/QR)

If one criteria met above, they fulfilled Area A2 and will enroll in their 2nd Yr. math requirement

If NO, go to next placement column →

Enroll in GE Math Course (B4)

Placement II

CAASPP/EAP Math Test Score:

- Standard Exceeded
- Standard Met and completed 12th grade approved year-long Math course beyond Algebra 2 (C- or better)*

High School Courses and GPA:

- Weighted Math GPA 3.5 and completed 12th grade approved year-long math course beyond Algebra 2 (C- or better)*
- Weighted Math GPA 3.5 or above and 5 or more years of Math or QR
- Weighted GPA 3.7 or above

Optional: If Scores Available:

SAT Math Test Score:

- 570 or above
- 550 or above on Subject Test in Math Level 1 or 2
- 520 – 560 and completed 12th grade approved year-long Math course beyond Algebra 2 (C- or better)*

ACT Math Test Score:

- 23 or above
- 20– 22 and completed 12th grade approved year-long Math course beyond Algebra 2 (C- or better)*

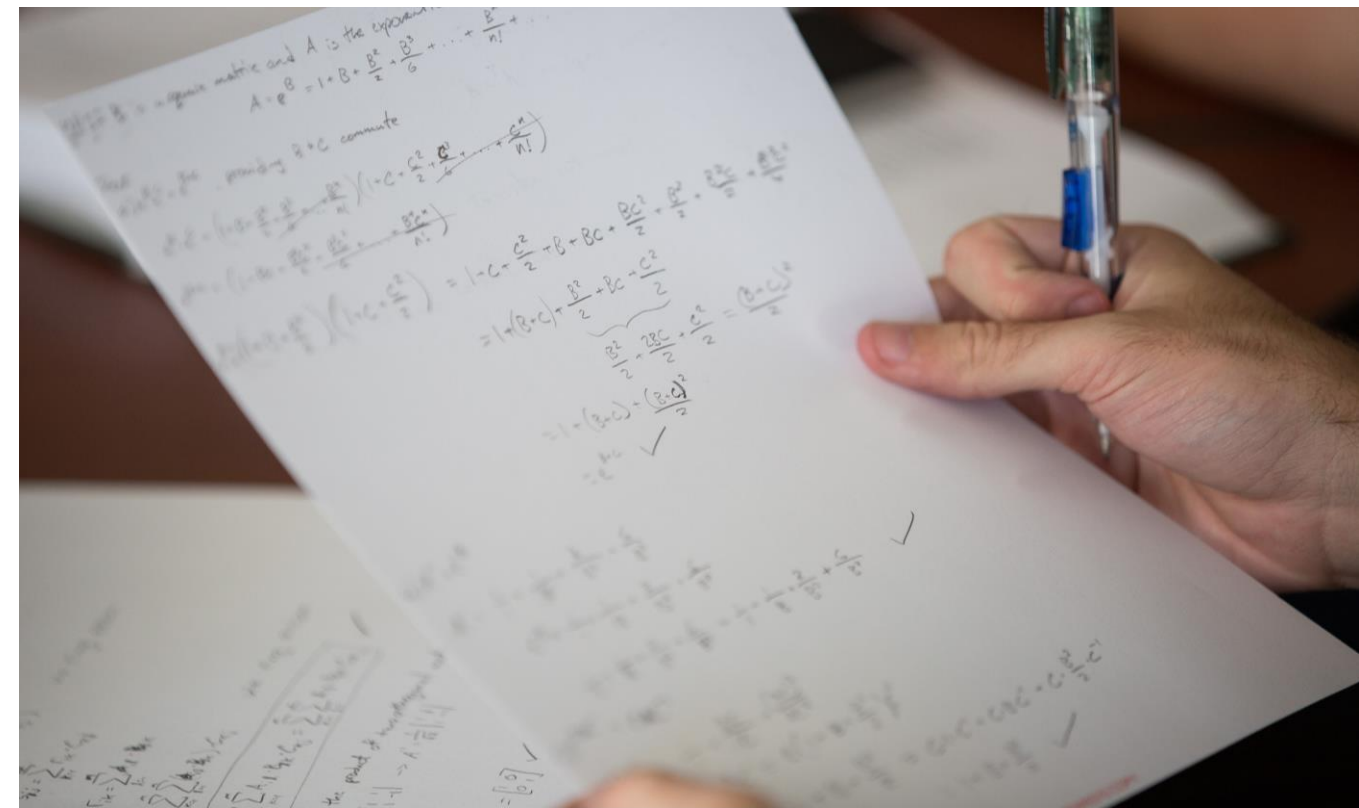
If Student meets one criteria above, they may enroll in A2 GE math without support

If NO, go to next placement column →

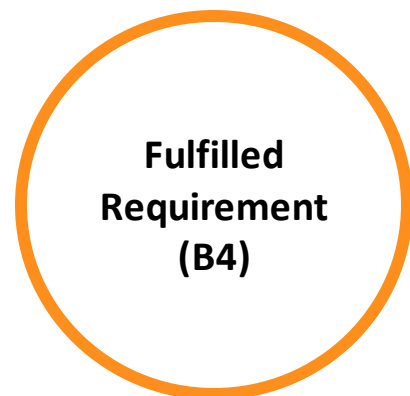
Enroll in Supported GE Math Course (B4)

Placement III and IV

Student will participate in Supportive Pathways for 1st year Students



First-Year Placement: Math (Non-STEM)



Fulfilled Requirement (B4)

Placement I

Advanced Placement (AP) Test Score:

- 3 or above: Calculus AB
- 3 or above: Calculus BC
- 3 or above: AP Statistics
- 3 or above: AP Computer Science Principles

International Baccalaureate (IB) Test Score:

- 4 or above on Math Higher Level (HL)

College Level Examination Program (CLEP) Score:

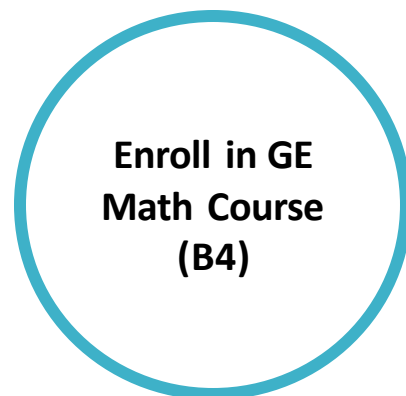
- 50 or above on: Calculus, College Algebra, College Algebra-Trigonometry, Pre-Calculus, or Trigonometry

College Transfer Coursework:

- Completed college course (C- or better) that satisfies CSU GE Area B4 (math/QR)

If one criteria met above, they fulfilled Area A2 and will enroll in their 2nd Yr. math requirement

If NO, go to placement column II



Enroll in GE Math Course (B4)

Placement II

CAASPP/EAP Math Test Score:

- Standard Exceeded
- Standard Met and completed 12th grade approved year-long Math course beyond Algebra 2 (C- or better)*
- Standard Met and 4 or more years of high school Math or QR

High School Courses and GPA:

- Weighted Math GPA 3.0 or above and completed 12th grade approved year-long math course beyond Algebra 2 (C- or better)*
- Weighted Math GPA 3.0 or above and 5 or more years of Math or QR
- Weighted GPA 3.7 or above
- Weighted GPA 3.5 or above and 4 or more years of Math or QR

Optional If Scores Available:

SAT Math Test Score:

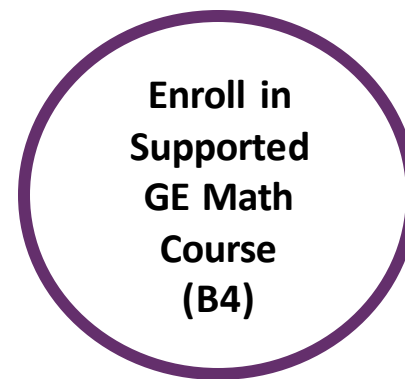
- 570 or above
- 520 – 560 and completed 12th grade approved year-long Math course beyond Algebra 2 (C- or better)*

ACT Math Test Score:

- 23 or above
- 20– 22 and completed 12th grade approved year-long Math course beyond Algebra 2 (C- or better)*

If Student meets one criteria above, they may enroll in A2 GE math without support

If NO, go to placement column III



Enroll in Supported GE Math Course (B4)

Placement III and IV

Student will participate in Supportive Pathways for 1st year Students



Questions?

