



SHIPPENSBURG AREA
SCHOOL DISTRICT

Comprehensive Plan 2025-2028

Mission Statement

Our mission is to design engaging and intellectually demanding work that empowers all learners to define their talents, exercise effective collaboration, practice skillful communication, and develop their critical thinking skills in order to lead them to success.

Vision Statement

Prepared to contribute; prepared to succeed

Plan Priorities, Goals, and Action Steps



To view the full plan, visit the district website at:

[🌐 Comprehensive Planning](#)

Priority 1

District administration must carefully consider our growing special populations when evaluating programs, curriculum, interventions, staffing, and resources to ensure that they are aligned to meet the needs of all students.



Goal #1a

The district will evaluate the special education, ESL, and student services departments to ensure that the staffing, curriculum, interventions, and resources are appropriate and aligned to meet the needs of the students. Research based intervention supports, curriculum and resources will be implemented.



Goal #1b

The district will provide research-based interventions to all students who are not meeting proficiency in ELA or in Math. MTSS teams will be fully functional K - 8.



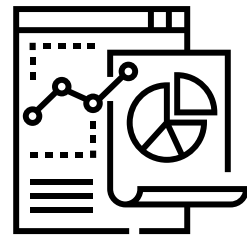
Action Step 1

The Director of Student services will conduct an audit of students, services and personnel to ensure that the department is adequately staffed to match the level of student need.



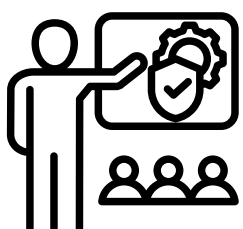
Action Step 2

The district will select, purchase, and implement a data warehouse system to monitor student data and create intervention groups.



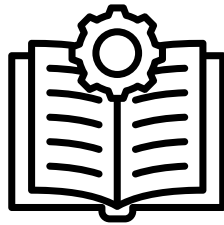
Professional Development

Training on the effective use of the data warehouse, implementation of intervention groups, progress monitoring



Priority 2

District administration will offer staff choice and differentiation in their own professional learning that aligns to the district goals of engagement and well-being, to the Profile of a Graduate, and to exemplary practices in teaching and learning.



Goal #2a



The district will publish a multi-year plan of implementation of the Profile of a Graduate at every grade band.

Goal #2b

All staff members will participate in differentiated professional learning that is focused on increasing student engagement and well-being and research-based instructional strategies.



Action Step 2

Teachers will participate in professional development designed to increase student engagement



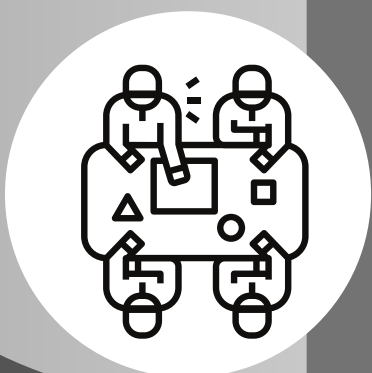
Communication Step 2

Detail the communication process regarding the Profile of a Graduate implementation



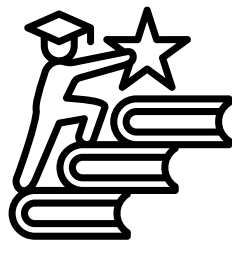
Professional Development

PD on Profile of a Graduate: Project-based learning, differentiation and student choice, student engagement and motivation

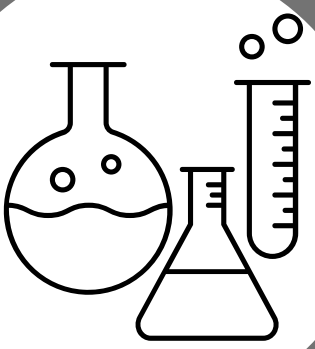


Priority 3

In an effort to ensure our students perform well on summative assessments, our district will examine our science resources and curriculum to be certain they are aligned to the new Pennsylvania science standards and the new assessment system.



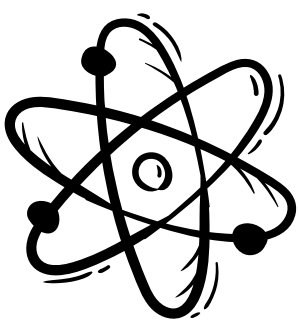
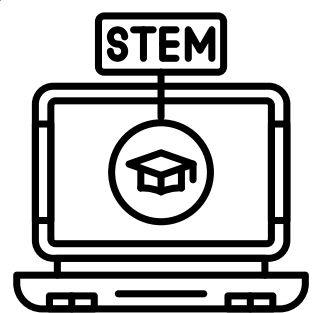
Goal #3a



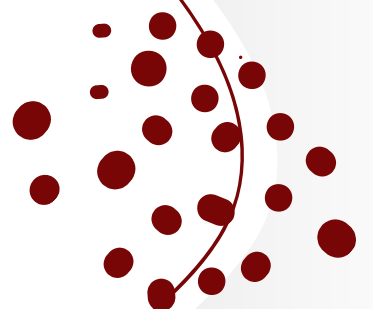
The district will have a written curriculum that fully aligns to the new STEEL Standards, and will have purchased the necessary materials to implement the standards in classrooms. We will monitor this alignment through student performance on the new state summative assessments, which will be at or above current levels of performance.

Action Step 3

Science teachers and the Director of CIA will review new science STEEL Standards and update district curriculum and resources



Professional Development
PD on STEEL Standards and curriculum development.



Priority 4

We realize our students need better aligned ELA curriculum and accompanying resources. The District will work to improve our approach to better ELA instruction to improve student achievement in ELA



Goal #4a



The district will see an increase in ELA proficiency scores, as measured by the PSSA and Keystone, upon implementation of an ELA curriculum and resources that are fully aligned to the Science of Reading.

Action Step 4a

ELA teachers and the Director of CIA will review the ELA standards and district materials to ensure alignment to the science of reading.



Action Step 4b

All elementary teachers K - 5 will be trained in the science of reading via LETRS.



Professional Development

LETRS Training K-5

