

Riverview Gardens School District  
1370 Northumberland  
St. Louis, Missouri 63137

January 12, 2023  
Highland Elementary School  
Asbestos Abatement – Bid Package RFP#275

## **ADDENDUM NUMBER 1**

Addendum No. 1 to Bid Documents entitled  
"Project Manual for Asbestos Abatement Work at Highland Elementary School"

Specifications by: Environmental Consultants, LLC dated December 6, 2022

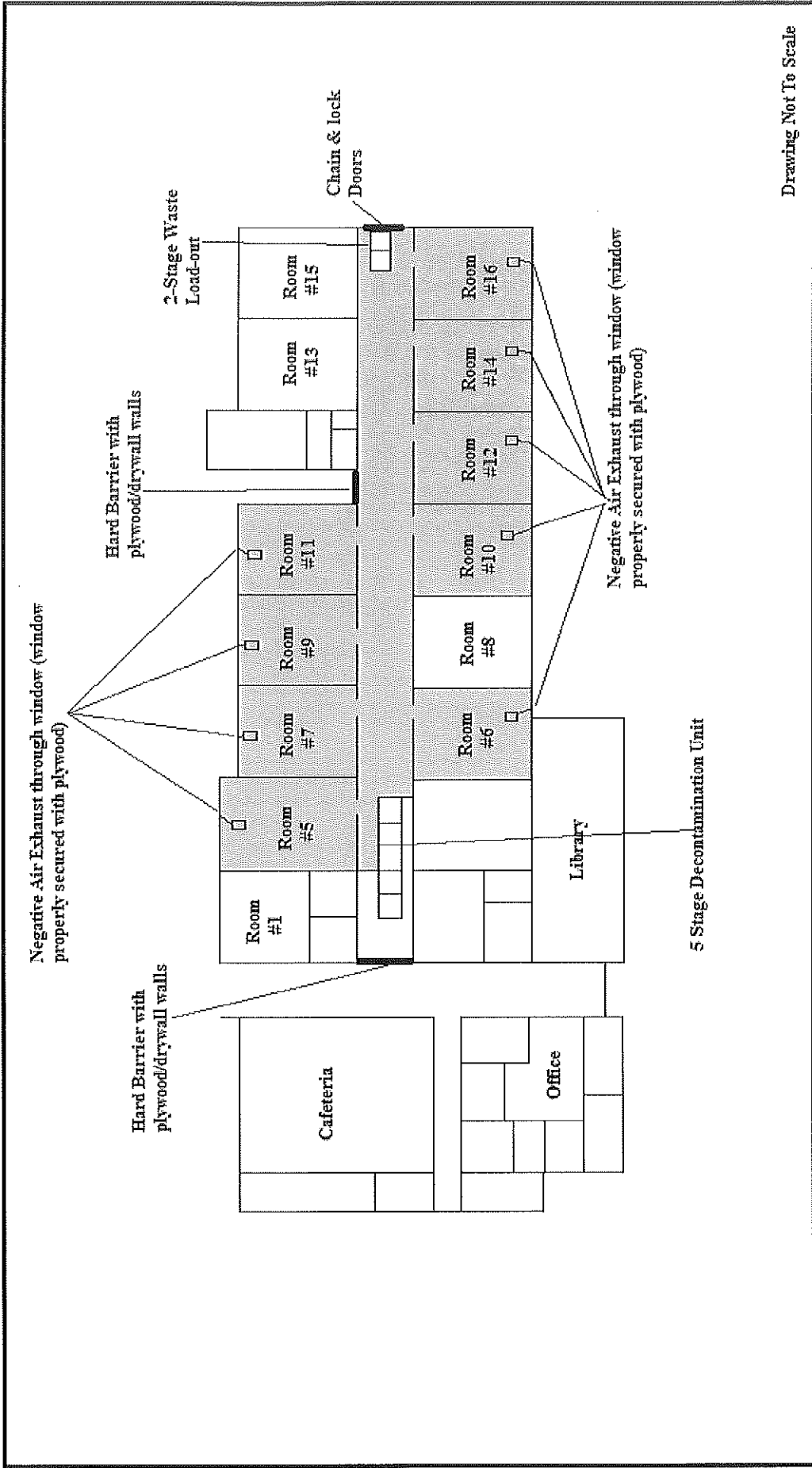
The Contract Documents are hereby modified, corrected and/or supplemented as follows:

1. Attached is the drawing for the project as requested. The district would prefer one containment for the main hallway and then a separate containment for Classroom #1, but if the abatement contractor chooses to break the main hallway down into two containments, it should be as per the drawings.
2. ADD TO BASE BID: Classroom #1 abatement of the spray applied ceiling material and carpeted/9" floor tile area within the classroom. The remaining 12" floor tile systems shall be protected by the abatement contractor during abatement.
3. ADD TO SCOPE: The window blind systems shall be removed and disposed of by the asbestos abatement contractor as part of the base bid. These materials shall not be saved for re-utilization.

All bidders are required to acknowledge receipt of this addendum on page BF-1 of the Bid Form. Failure to acknowledge receipt of this addendum may result in disqualification.

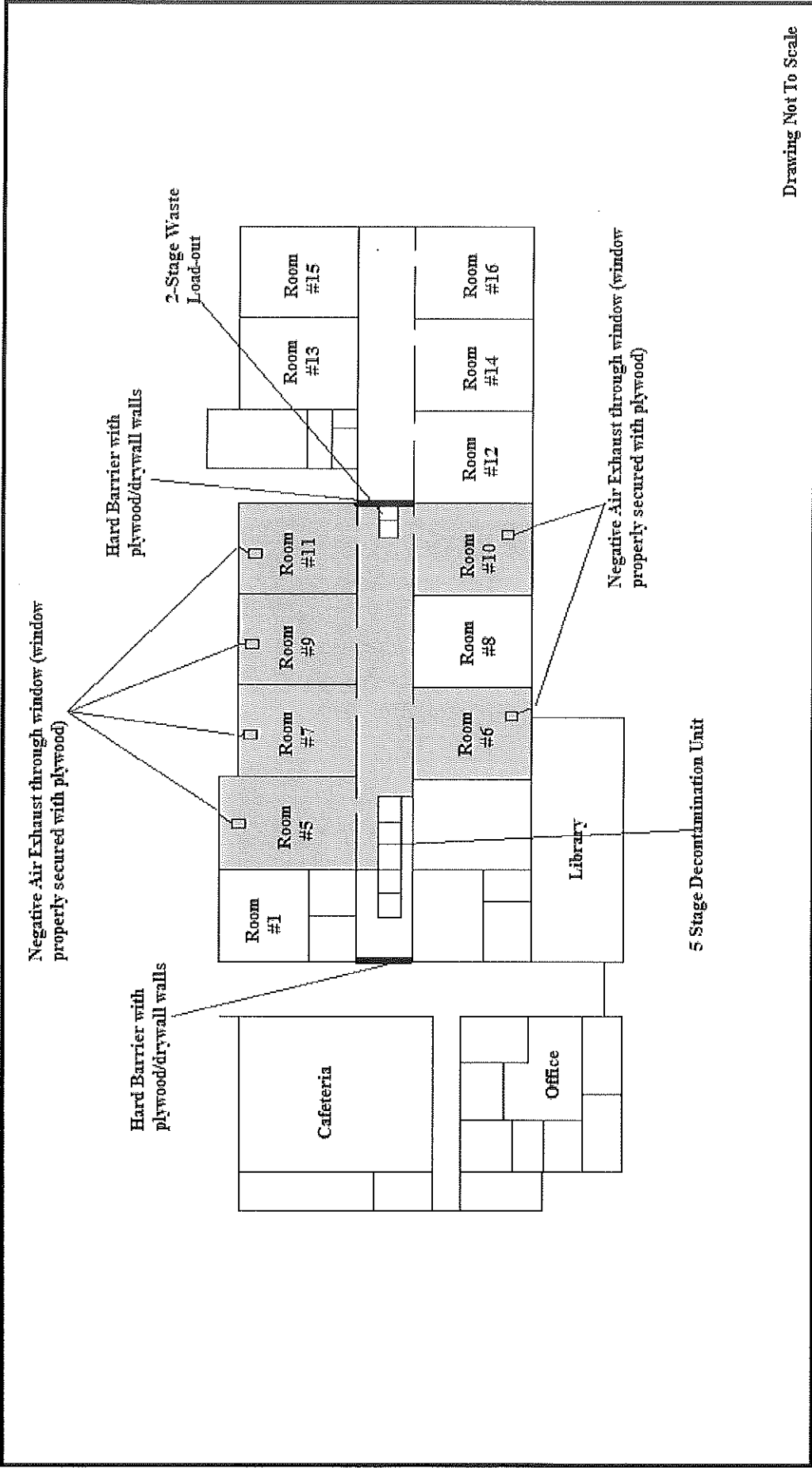
Please note: The bid submittal date remains unchanged for this project.

**END OF ADDENDUM NO. 1**



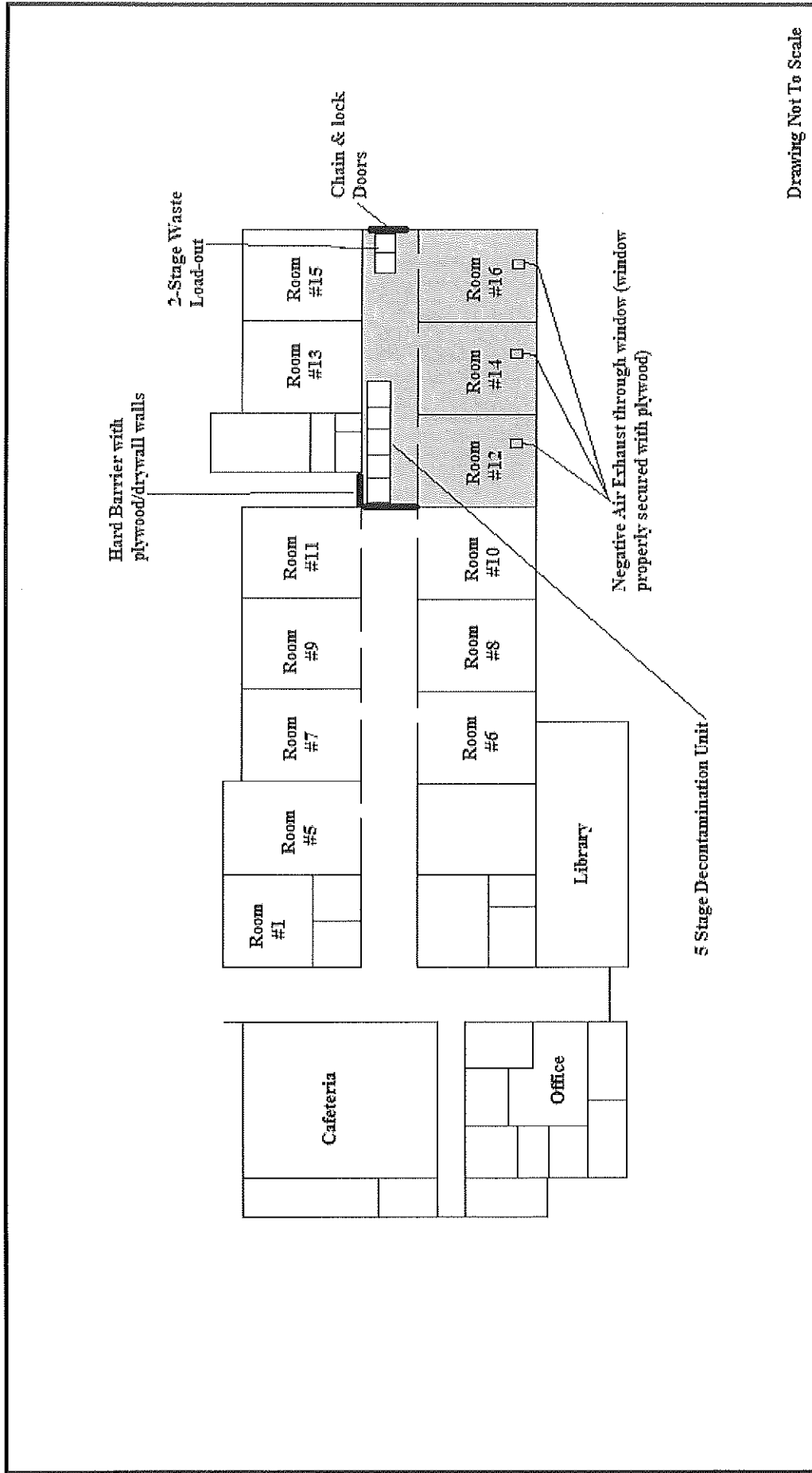
Drawing Not To Scale

<p>Title:</p> <p><b>Asbestos Abatement</b></p>	<p>Location:</p> <p><b>Highland Elementary School</b>  <b>174 Shepley Road</b>  <b>St. Louis, Missouri 63137</b></p>	<p><b>Environmental Consultants, LLC</b>  <b>#6 Meadow Heights Professional Park</b>  <b>Collinsville, Illinois 62234</b></p>	<p>Figure</p> <p><b>A-1</b></p>
--	--	---	---------------------------------



Drawing Not To Scale

<p>Title:</p> <p><b>Asbestos Abatement</b></p>	<p>Location:</p> <p><b>Highland Elementary School</b>  <b>174 Shepley Road</b>  <b>St. Louis, Missouri 63137</b></p>	<p><b>Environmental Consultants, LLC</b>  <b>#6 Meadow Heights Professional Park</b>  <b>Collinsville, Illinois 62234</b></p>	<p>Figure</p> <p><b>A-1</b></p>
--	--	---	---------------------------------



Drawing Not To Scale

Title:  
Asbestos  
Abatement

Location:  
Highland Elementary School  
174 Shepley Road  
St. Louis, Missouri 63137

Environmental Consultants, LLC  
#6 Meadow Heights Professional Park  
Collinsville, Illinois 62234

Figure  
A-2