



SUPPORTING PARENTS: NAVIGATING HIGH SCHOOL SUPPORTS



Presented by: SMJUHSD SPED Dept.

WELCOME TO SMJUHSD!

Dr. Paul Collier

Director of Special Education

- Parent Involvement
- Support team staff and their role
- IEP vs. 504
- Effective Communication
- Q&A



UNDERSTANDING HIGH SCHOOL SUPPORTS

SOCIAL-EMOTIONAL RESOURCES KEY STAFF AND THEIR ROLES



Community Liasons



School Psychologists



BCBA



Counselors



SPED Coordinators



EAOP Coordinator

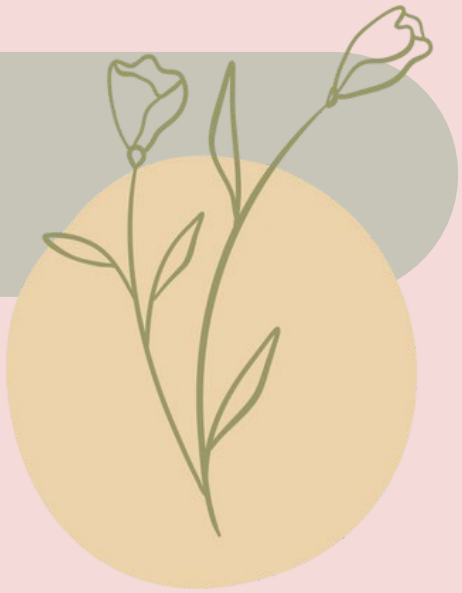


Parent Resource Center

OUR TEAM



District School Community Liaisons



Daisy Corral -Jaimes and Daniela Yanez -Vargas



Santa Maria Joint Union
HIGH SCHOOL DISTRICT



OUR ROLE

- Support all School Sites with Improving Student Attendance, work with Truant Students
- Lower Chronic Absenteeism Rates within our School District
- Conduct Home visits to identify barriers for students and give student and families 1 on 1 support
- Connect students and families to school site resources and community agencies
- Analyze data to find students who need support with attendance using programs such as Aeries and Panorama . Use these programs to identify different patterns within truancy



NUESTRO TRABAJO

- Apoyar a todos los sitios escolares para mejorar la asistencia de los estudiantes, trabajar con los estudiantes que se ausentan
- Reducir las tasas de ausentismo crónico dentro de nuestro distrito escolar
- Realizar visitas a casa para identificar las barreras de los estudiantes y brindar los estudiantes y a las familias apoyo personalizado
- Conectar a los estudiantes y a las familias con recursos del sitio escolar y agencias comunitarias
- Analizar los datos para encontrar estudiantes que necesitan apoyo con la asistencia utilizando programas como Aeries y Panorama. Usar estos programas para identificar diferentes patrones dentro del ausentismo




CHRONIC ABSENTEEISM

1 What is Chronic Absenteeism?

- The percentage of students who missed 10 percent or more of their scheduled instructional days.
- Poor attendance in the first month of school often indicates ongoing absenteeism throughout the rest of the school year.
- Half of the students who miss 2-4 days in September end up missing almost a month of school.

2 Increasing Attendance Rates


- Attendance rates increase when schools engage both students and parents through constructive methods and provide mentoring support to students with chronic absenteeism.
- 

ABSENTISMO CRONICO

1 Que es el Absentismo Cronico?

- El porcentaje de estudiantes que perdieron el 10 por ciento o más de sus días de instrucción programados.
- La mala asistencia en el primer mes de clases a menudo indica un ausentismo continuo durante el resto del año escolar.
- La mitad de los estudiantes que faltan de 2 a 4 días en septiembre terminan perdiendo casi un mes de escuela.

2 Aumento de la Tasa de Asistencia

- Asistencia de los estudiantes aumentan cuando las escuelas involucran tanto a los estudiantes como a los padres a través de métodos constructivos y brindan apoyo de tutoría a los estudiantes con ausentismo crónico.
- 

COMMUNITY RESOURCES

We help students and families access a range of important resources, like academic support, mental health services, extracurricular activities, and community programs, all aimed at promoting growth and success.

- Wellness center
- Fighting Back Santa Maria Valley
- One Community Action/Por Vida
- Tutoring
- Family Support Services
- ARISE

RECURSOS DE LA COMMUNIDAD

Ayudamos a los estudiantes y a las familias a acceder a una variedad de recursos importantes, como apoyo académico servicios de salud mental, actividades extracurriculares y programas comunitarios, todos destinados a promover el crecimiento y el éxito.

- Centro de Bienestar
- Fighting Back Santa Maria Valley
- One Community Action/Por Vida
- Tutoria
- Servicios de apoyo Familiar
- ARISE

THANK YOU GRACIAS



Daniela Yanez -Vargas
805-922-4573 ext 1611

Daisy Corral -Jaimes
805-922-4573 ext 1610



Daniela Yanez -Vargas
805-956-3961

Daisy Corral -
Jaimes 805 -956 -
3958



dyanez-vargas@smjuhsd.org
dcorral-jaimes@smjuhsd.org



829 S.Lincoln St. Suite
907, Santa Maria CA,
93458

**CONTACT
US/
COMUNIQUESE
CON
NOSOTROS**

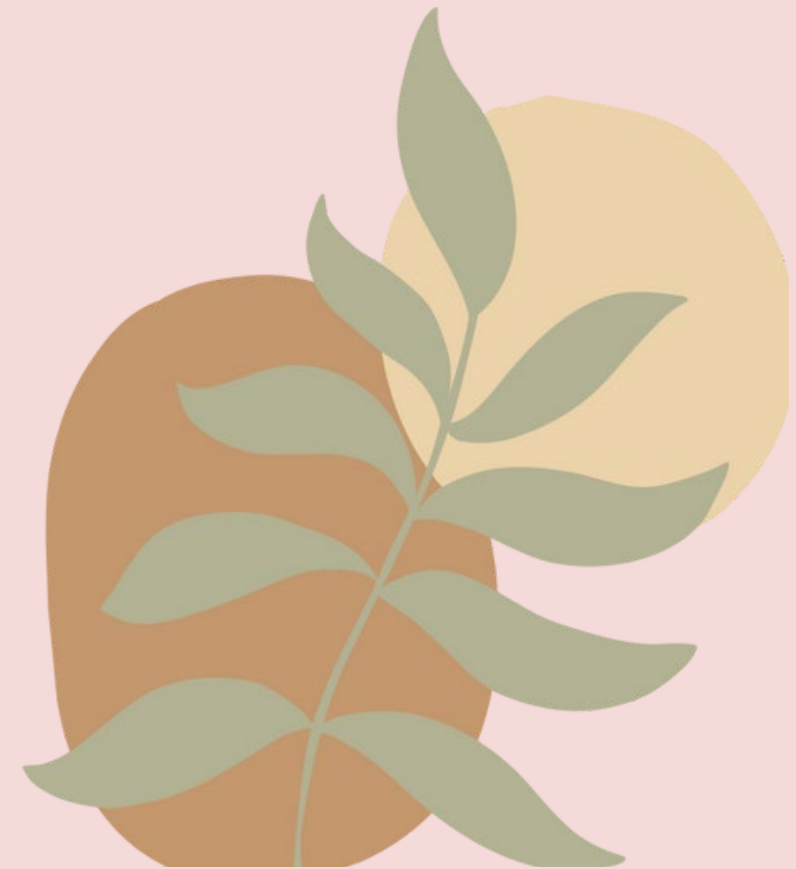


Santa Maria Joint Union
HIGH SCHOOL DISTRICT



Thank You

Gracias



SCHOOL PSYCHOLOGISTS

Assessment Process

When there is a suspicion of a disability, we will be part of the team that assesses the student to determine if the student is eligible for special education services. This includes determining if the disability is impacting the student educationally

Counseling Services

If a student is exhibiting social/emotional needs, we may provide direct counseling to the student, (individual and/or group), and this may include using evidence - based curriculum to address specific needs (i.e. depression, anxiety, etc.)

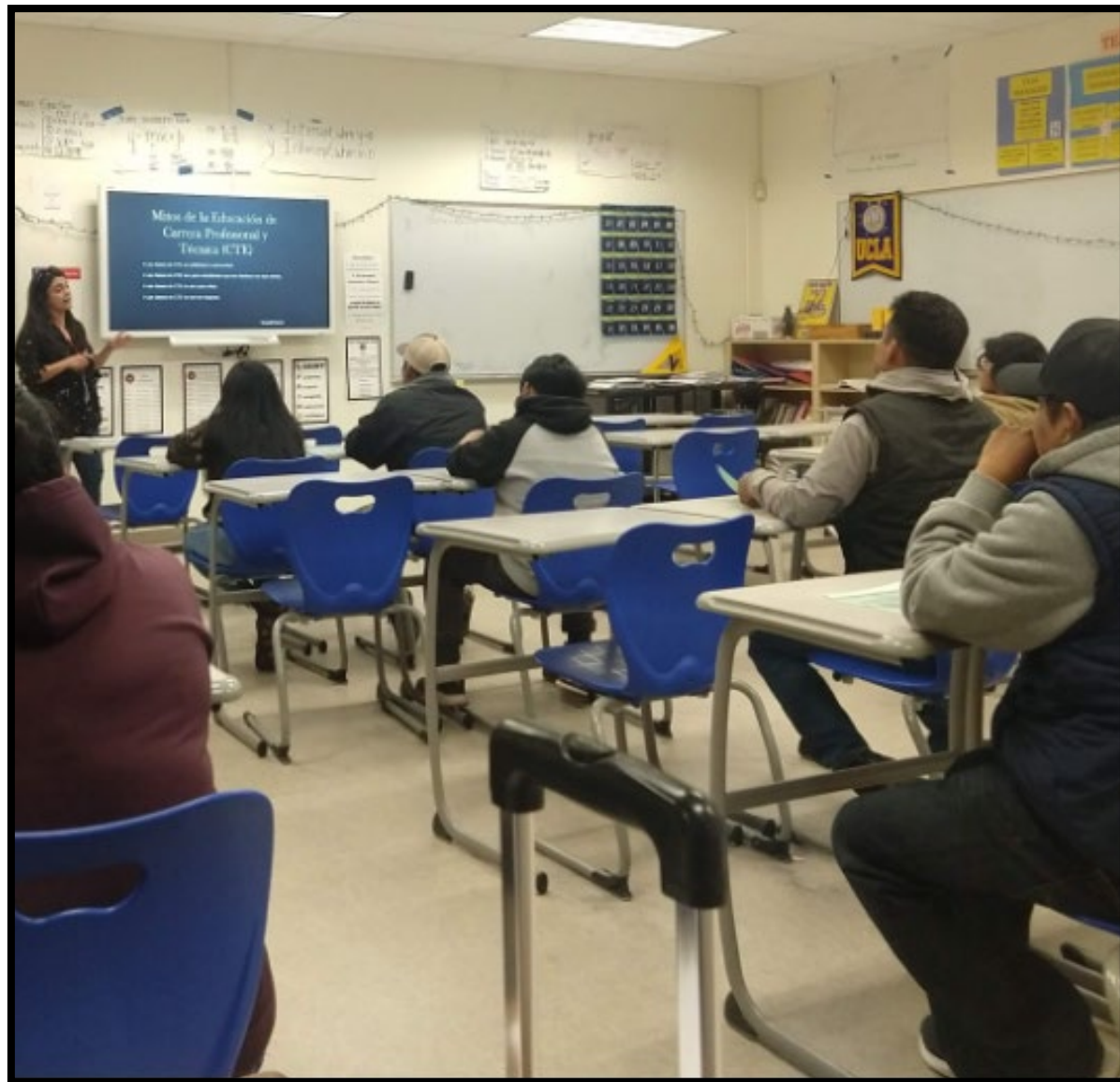
Behavioral Support

Encourage staff to see behavior as a form of communication from the student and use this information to develop appropriate next steps to address these challenging behaviors. This may include developing a plan and/or determining a system to reinforce positive behaviors.

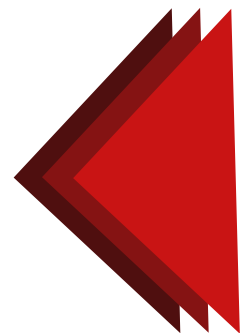


Counseling Department

Academic



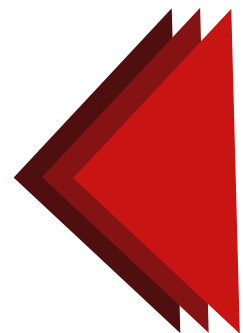
- **Academic Plans**
- **Classroom Lessons**
- **Monitoring A -G/ Grad Progress**
- **Placement Recommendation**
 - ELD, Alternative Ed, SPED
- **Intervention Support**
 - SST, After -School Tutoring, 504s, IEPs



College & Career



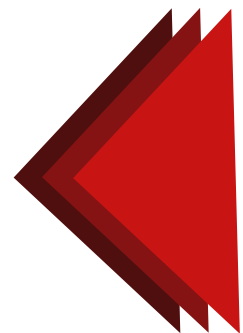
- Career Lessons
- College Fair
- Scholarships
- College Application Support
- College Trip



Personal/Social



- Individual student meetings
- Referrals to outside resources
- Parent meetings
- Crisis counseling





TUTORING / TUTORIA

CLICK HERE FOR DETAILS / HAGA CLIC AQUI

**HOME OF THE
SAINTS!**

Established 1891


SANTA MARIA HIGH SCHOOL

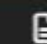
"Once a Saint Always a Saint"


901 South Broadway
Santa Maria, CA 93454
PH: 805-925-2567
FAX: 805-922-0215
Office Hours: 8:00 am - 4:30 pm

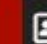
 Athletics

 Attendance

 Bell Schedule

 Bulletin

 Counseling

 Registration & Records

Go to Santa Maria High School's website and click on **COUNSELING**
You will need to scroll down to see your student's counselor. You can book
appointments from there.



FATIMA
GONZALEZ

Counselor
9th Grade
Last Names M-Z

Contact

I am honored to be here at SMHS to continue working for the community that I love, doing what I love. I look forward to meeting you!


Available Mon-Fri, 8:15am-4pm

fgonzalez@smjuhsd.org

(805)925-2567 ext. 3744

[Email Me](#)

[Make an Appointment](#)

Meeting with Mrs. Gonzalez :)
5 minutes 

November 07

< > November 2024

S	M	T	W	T	F	S	8:15 AM	8:20 AM	12:30 PM
					1	2	12:35 PM	12:40 PM	12:45 PM
3	4	5	6	7	8	9	12:50 PM	12:55 PM	3:55 PM
10	11	12	13	14	15	16			
17	18	19	20	21	22	23			
24	25	26	27	28	29	30			

ⓘ All times are in (UTC-08:00) Pacific Time (US & Canada) ▼

🌐 All times are in (UTC-08:00) Pacific Time (US & Canada) ▼

 **ADD YOUR DETAILS**

First and last name *

First and last name

Email *

Email

Address

Address

Phone number

Add your phone number

Add any special requests

Add any special requests



Book

College & Career Team

COLLEGE & CAREER COUNSELOR

- FINANCIAL AID APPLICATIONS
- COLLEGE FIELD TRIPS
- COLLEGE ESSAYS
- COLLEGE INFO
- SCHOLARSHIPS
- COLLEGE MAJOR INFO
- CAREER EXPLORATION
- COLLEGE APPLICATIONS



SAVANNA SUSTAITA
SSUSTAITA@SMJUHSO.ORG
x 3763

CAREER SPECIALIST

- CAREER EXPLORATION
- RESUME BUILDING
- WORK PERMITS
- MILITARY INFO
- JOB OPPORTUNITIES
- ALLAN HANCOCK COLLEGE INFO
- COMMUNITY SERVICE OPPORTUNITIES



RACHEL ACOSTA
racosta@smjuhsd.org
x 3760

Updates

- Classroom Lessons Have Begun!
- College Lab Hours Monday 2- 4 PM
- Save the Date: College Fair 10/29

SaintCARE

Wellness Center

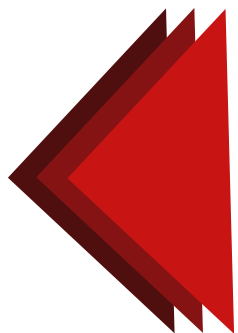


- Classroom SE Lessons/tours
- Support Groups
- 1:1 Counseling
- Workshops (students & parents)
- Lunchtime Tabling/activities
- Peer Leaders
- Teacher/staff support
- Hours/referral process



 **SaintC.A.R.E.**

Counseling. Assistance.
Resources. Education.





THANK
YOU





9th Grade Counseling Team



Christopher Carrillo
A-L
805-922-1305 Ext. 5198
ccarrillo@smjuhsd.org



Sue Avrit
M-Z
805-922-1305 Ext. 5775
savrit@smjuhsd.org



Israel Hernandez
Intervention/Wellness Center
805-922-1305 Ext. 5601
ihernandez@smjuhsd.org

****2 Grade Level counselors follow students all four years**

Pioneer Valley College and Career Center



Meet the team



Melani Mederos

Career Specialist

(805) 922-1305 Ext. 5121

mmederos@smjuhsd.org



Crystal Buchan

College Readiness Counselor

(805) 922-1305 Ext. 5111

cbuchan@smjuhsd.org



Juan Martinez

EAOP Coordinator

(805) 922-1305 Ext. 55116

jantonio-martinez@smjuhsd.org

How our Pioneer Valley Counseling Team supports your students



Academic Support

- **Academic Plans/Schedule Building**
- **Monitor Academic, Graduation, and A-G progress**
- **Collaboration with TOSA's and Case Managers to ensure correct course placement for ALL students**
- **Intervention Support:**
 - **Individual student meetings (1 on 1 meeting with every student at least once during 9th grade)**
 - **Parent meetings**
 - **Integral part of SST/ 504/ I.E.P. Teams**
 - **Referrals to before and after school tutoring**
- **Classroom Lessons and Parent Information Nights annually beginning in 8th grade to go over specific grade level expectations, graduation and A-G requirements, and student support services.**

College & Career Support

- **California Colleges lessons each year (college and career exploration)**
- **College and Career Fairs**
- **College Application and Financial Aid support**
- **College and Career focused speakers and tabling**
- **Parent nights focused on financial aid and post-secondary options beginning in 11th grade**

Social-Emotional Support

- **Individual student meetings (open door policy)**
- **Parent meetings as needed**
- **Referrals to ESS or outside resources**
- **Group Counseling through Wellness Center**
- **Wellness focused lunchtime activities**
- **Classroom lessons**

Special Education Services Offered at SMHS, PVHS and RHS

Program Currently Offered:

- General Education Classes w/Support
- General Education Collaboration Classes
- Mild/Moderate Support Classes
- Extensive Support Needs Classes
- Counseling Services (Academic Counselors, School Psychs , Wellness Center)
- Speech and Language Services
- Transitional Vocational Services (Pre -TVP, Mild/Moderate Support Needs and Extensive Support Need TVP
- Behavioral Support Needs (BCBA, Behavior Techs, Por Vida)
- Independent Study, Home Hospital, ITS





College and Career Support

Our district provides resources and opportunities that help students explore their strengths and interests as well as career fields aligned with these attributes. These efforts help students plan for and choose postsecondary pathways and create opportunities for students to develop college- and career-readiness skills that help them navigate postsecondary education and the world of work.

- ✔ Explore Career Options**
- ✔ Utilize Support Services: Take advantage of special education resources, counseling services, and academic accommodations**
- ✔ Engage in Extracurricular Activities: Participate in clubs, sports, or volunteer opportunities to build teamwork skills, leadership experience, and social connections.**

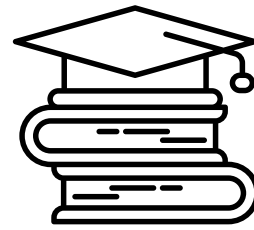
**Nancy Pacheco, High School Readiness Liaison
Substitute for Natallie De Leija**

Support Programs and Opportunities



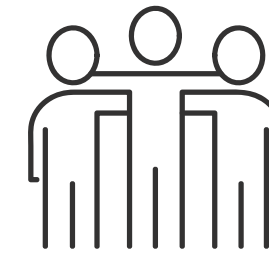
College and Career Center

Located at each school



Early Academic Outreach Program EAOP

Offer cohort and school wide support



Upward Bound

Opportunities for participants to succeed in their pre-college performance



Extracurricular activities

Programs, clubs, sports, work, responsibilities



Tutoring

Academic support is essential to prepare for the next steps in your education



College Search Tools

Search for programs with strong support services
californiacolleges.edu

Support Beyond High School



Allan Hancock College Learning Assistance Program (LAP)



[ABOUT](#) [SERVICES & SUPPORT](#) [ACADEMICS](#) [ADMISSIONS](#) [PAYING FOR COLLEGE](#)



LEARNING ASSISTANCE PROGRAM

[APPLY](#)

[APPLY for Students Without
Login](#)

[LAP Online \(Student Sign On\)](#)

[Workshops and Training](#)

[Forms](#)

[Accommodations](#)

[Home](#) / [Learning Assistance Program \(LAP\)](#)

LEARNING ASSISTANCE PROGRAM (LAP): DISABILITY SERVICES

MISSION

The Learning Assistance Program (LAP) is committed to providing equal opportunity and access to students with disabilities through necessary accommodations, instruction, assessment, counseling, and advocacy. Our commitment is to help eliminate barriers to equity and access by providing individualized support services for students with all types of disabilities.

Support Beyond High School



Cal Poly San Luis Obispo Disability Resource Center (DRC)

my CalPoly login



CAL POLY

Disability Resource Center

Embrace your Unlimited Possibilities

Home : About Us : Our Mission, Vision, Values & Guiding Principles

Our Mission, Vision, Values & Guiding Principles

Quick Links:

- [Mission](#)
- [Vision](#)
- [Values](#)
- [Guiding Principles](#)
- [Related Resources for Guiding Principles](#)

Mission

The Disability Resource Center (DRC) cultivates an accessible and inclusive community where students with permanent and temporary disabilities have an equal opportunity to participate in all aspects of campus life. We facilitate student learning and access through partnerships with students, faculty, and staff.

Vision

A universally accessible campus where programs, services and environments are usable by all people, to the greatest extent possible, without the need for adaptation or specialized design.

Support Beyond High School



UCSB
Disabled Students Program
(DSP)

UC SANTA BARBARA
Disabled Students Program

[Students](#) [Faculty & Staff](#) [Upcoming Events](#) [Student Workers](#) [Contact](#)

Welcome to the Disabled Students Program

DSP's mission is to facilitate full participation and equal access to all educational activities and classes at UCSB.



EAOP STAFF CONTACTS



Alma Miranda
EAOP Assistant
Director
amiranda@ucsb.edu



**Juan Antonio
Martinez**
PVHS
College & Career Center
jantoniomartinez@smjuhsd.org



Kalynn Rivera
ERHS
College & Career Center
krivera@smjuhsd.org



Karina Soto
SMHS
College & Career Center
ksoto@ucsb.edu



Santa Maria Joint Union
HIGH SCHOOL DISTRICT

Family and Community Engagement Program

November 14, 2024

About us...

The Family Resource Center is a place where families can participate in programs, workshops events, trainings and check out learning materials. Families get instantly connected to community resources. Our program provides district-wide interpretation and translation services.

Location: 829 S. Lincoln St. Suite 908

Hours: Monday-Friday from 10:00am-7:00pm

Funding for staffing and service are provided under LCAP 3.6 and LCAP 2.6.



Santa Maria Joint Union High Schools District Family Resource Center 2024/2025 At-A-Glance Parent Engagement Opportunities			
JULY 2024	AUGUST 2024	SEPTEMBER 2024	OCTOBER 2024
Bridge to English & More Every Monday 4:00pm-7:00pm Parent Technology Support 101 Every Tuesday 4:00pm-7:00pm AERES Parent Square Canvas Training Every Thursday 4:00pm-7:00pm ESL Self-Pace (Burlington English) Daily ESL Conversational English 8:30 - 11:00 Monday/Wednesday 7:00pm-8:30pm Parent Health Education Workshops 6:30 - 7:25 Thursday 7:00pm-8:00pm STEM 7:25 - 7:55 Thursday 6:00pm-7:30pm Bridge to College 7:30 - 7:45 Wednesday 6:00pm-7:30pm Healthy Food Pantry 11:20 8:00am-11:00am	AERES Parent Square Canvas Training Every Thursday 4:00pm-7:00pm ESL Self-Pace (Burlington English) Daily Wash Parent Support 8:4 Teaching 5:00pm-5:30pm Bridge to English & More 8:30 5:00pm-7:00pm Parent Technology Support 101 8:30 4:00pm-7:00pm ESL Intro to English A 8:30 - 11:00 Monday/Wednesday 7:00pm-8:00pm Healthy Food Pantry 11:20 8:00am-11:00am Parent Health Education classes: Digital Literacy English Conversation Financial Literacy Health and Wellness Parenting Skills Pathway to College Social Emotional Learning Spanish Conversation 8:30-11:00am or 1:15-4:30pm Back to School Night with open school website for information 8:30 5:00pm-7:00pm	AERES Parent Square Canvas Training Every Thursday 4:00pm-7:00pm ESL Self-Pace (Burlington English) Daily Healthy Food Pantry 11:20 8:00am-11:00am Family Engagement Program 9:25 - 11:00 (Wednesday) 6:00pm-7:45pm Fresno Parent University classes: Digital Literacy English Conversation Financial Literacy Health and Wellness Parenting Skills Pathway to College Social Emotional Learning Spanish Conversation Dates TBD M/W or T/Th 6:30pm-8:30pm Celebration of Culture in Community TBD	AERES Parent Square Canvas Training Every Thursday 4:00pm-7:00pm ESL Self-Pace (Burlington English) Daily Parent Health Education Night 11:5 5:30pm-8:30pm Oven Streets 10:24 12:00pm-4:00pm Healthy Food Pantry 11:20 8:00am-11:00am Family Engagement Program 9:25 - 11:00 (Wednesday) 6:00pm-7:45pm Digital Literacy English Conversation Financial Literacy Health and Wellness Parenting Skills Pathway to College Social Emotional Learning Spanish Conversation Dates TBD M/W or T/Th 6:30pm-8:30pm Mixteco PAC 12:17 12:00pm-5:00pm Bridge to College 10:24 - 11:30 Thursday 6:00pm-8:00pm
NOVEMBER 2024	DECEMBER 2024	JANUARY 2025	FEBRUARY 2025
AERES Parent Square Canvas Training Every Thursday 4:00pm-7:00pm ESL Self-Pace (Burlington English) Daily Parent Health Education Night 11:5 5:30pm-8:30pm Family Leadership 11:13 - 12:15 (Wednesday) 6:00pm-8:00pm Healthy Food Pantry 11:20 8:00am-11:00am	AERES Parent Square Canvas Training Every Thursday 4:00pm-7:00pm ESL Self-Pace (Burlington English) Daily Parent Health Education Night 12:3 5:30pm-8:30pm "Juntos por la educacion" Parent Conference 12:7 8:30am-2:00pm Healthy Food Pantry 12:18 8:00am-11:00am Mixteco PAC TBD 6:00pm	AERES Parent Square Canvas Training Every Thursday 4:00pm-7:00pm ESL Self-Pace (Burlington English) Daily Family Engagement Program 1:29 - 3:12 (Wednesday) 6:00pm-8:00pm Dr. Martin Luther King Jr. Celebration TBD Healthy Food Pantry TBD 8:00am-11:00am ESL Intro to English B Dates TBD Monday/Wednesday 6:30pm-8:30pm	AERES Parent Square Canvas Training Every Thursday 4:00pm-7:00pm ESL Self-Pace (Burlington English) Daily Parent Health Education Night 2:4 5:30pm-8:30pm Mixteco PAC 2:4 6:00pm Fresno Parent University classes: Digital Literacy English Conversation Financial Literacy Health and Wellness Parenting Skills Pathway to College Social Emotional Learning Spanish Conversation 2:4-2:57 M/W or T/Th 6:30pm-8:30pm Healthy Food Pantry TBD 8:00am-11:00am Black History Month Celebration TBD
MARCH 2025	APRIL 2025	MAY 2025	JUNE 2025
AERES Parent Square Canvas Training Every Thursday 4:00pm-7:00pm ESL Self-Pace (Burlington English) Daily Parent Health Education Night 3:4 5:30pm-8:30pm "Juntos por la educacion" Parent Conference 3:15 8:30am-2:00pm Civic Engagement 3:27 - 5:30 Thursday 6:00pm-8:00pm Fresno Parent University classes: Digital Literacy English Conversation Financial Literacy Health and Wellness Parenting Skills Pathway to College Social Emotional Learning Spanish Conversation 3:5-3:27 M/W or T/Th 6:30pm-8:30pm Healthy Food Pantry TBD 8:00am-11:00am	AERES Parent Square Canvas Training Every Thursday 4:00pm-7:00pm ESL Self-Pace (Burlington English) Daily Parent Health Education Night 4:1 5:30pm-8:30pm Mixteco PAC 4:1 6:00pm Fresno Parent University classes: Digital Literacy English Conversation Financial Literacy Health and Wellness Parenting Skills Pathway to College Social Emotional Learning Spanish Conversation 4:14-5:1 M/W or T/Th 6:30pm-8:30pm STEM 4:20 - 5:22 (Wednesday) 6:00pm-8:00pm Healthy Food Pantry TBD 8:00am-11:00am El Dia de los Niños TBD	AERES Parent Square Canvas Training Every Thursday 4:00pm-7:00pm ESL Self-Pace (Burlington English) Daily Healthy Food Pantry TBD 8:00am-11:00am ESL Intro to English B Dates TBD Monday/Wednesday 6:30pm-8:30pm Healthy Food Pantry TBD 8:00am-11:00am El Dia de los Niños TBD	AERES Parent Square Canvas Training Every Thursday 4:00pm-7:00pm ESL Self-Pace (Burlington English) Daily Healthy Food Pantry TBD 8:00am-11:00am ESL Intro to English B Dates TBD Monday/Wednesday 6:30pm-8:30pm Healthy Food Pantry TBD 8:00am-11:00am El Dia de los Niños TBD



829 S. Lincoln St. Suite 908, Santa Maria, CA 93458
(805) 922-4573 ext. 1918 or 1908

Visit us online

Programs and Services

English

- ESL
- Burlington English
- Rosetta Stone

Math

- Family Math Nights

Science

- STEM
- Family Science Night

History

- Civic Engagement

Health

- Nutrition and Well-being

Special Education Information Nights

Pathway to College

Digital Literacy

Financial Literacy

Small Business Development

Health Fair

Day of the Dead

Hispanic Heritage Celebration

Black History Month Celebration

LCAP Parent Advisory Committee

- Parent Feedback

Mixteco Parent Advisory Community

Parent Virtual Academy

Family Engagement Program

Parent Conferences

Interpretation and Translation services

Food Pantry

School supplies

Teen Closet

Internet Access

Student Community Service Hours

Community Referrals

Where greatness grows.

Parent Participation Data



SMJUHSD

Fall Spring Summer



Where greatness grows.

What's New for Summer/2024-2025 S Y



SMJUHSD

- Support with incoming 9th grade enrollment
- Mental Health Parent Evenings
- Rosetta Stone in Spanish
- Bridge to English Flexible Learning
- Parent Technology Support 101
- AERIES Student Data Confirmation Support
- Family Leadership Program

Where greatness grows.

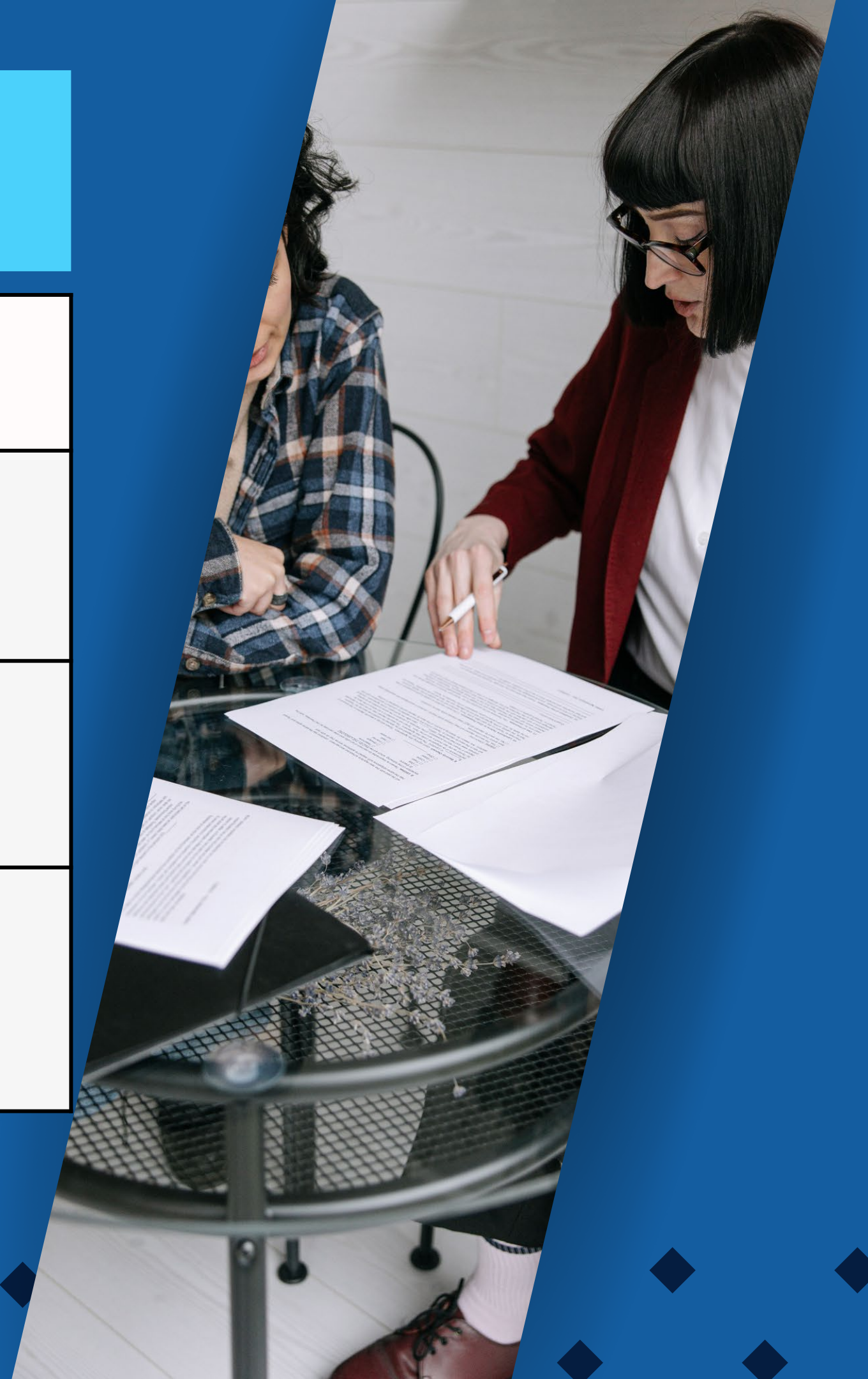


IEP

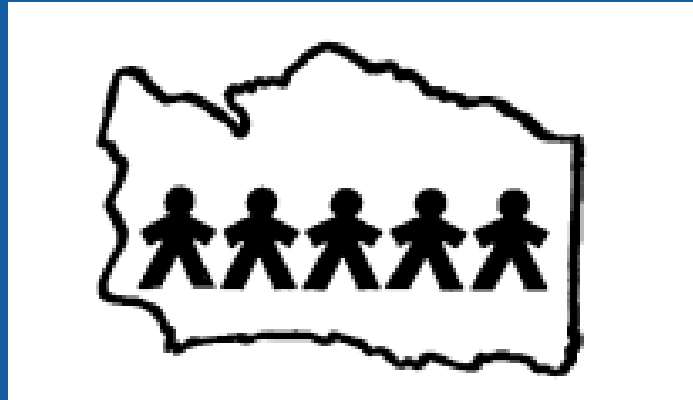
VS.

504

Legal Basis	Individuals with Disabilities Education Act (IDEA)	Section 504 of the Rehabilitation Act of 1973
Purpose	To provide individualized special education services for eligible students	To accommodate a student's education program in the regular classroom setting
Eligibility	To be eligible for an IEP, a child's school performance must "adversely affected" by a disability in one of the 13 IDEA disability categories	Students must have a disability that substantially limits one or more major life activities. Section 504 has a broader definition of disability than IDEA
Contents	An IEP is a written document developed by an IEP team. It details a student's current educational performance, services, goals, accommodations, modifications, placement, and more.	There is no standard form for a 504 plan. Most 504 plans are written, but it's not a requirement. 504 plans generally include accommodation, and information on who provides them.



Special Education Resources



Parent Handbook
available on SBCSELPA
Website
www.sbcselpa.org



Parent Handbook(ENG)

Contact Us

SBCSELPA
5385 Hollister Ave., Bldg. 7
Mail: 5385 Hollister Ave., Box 107
Santa Barbara, CA 93111
Phone: (805) 683-1424
Email: selpa@sbcselpa.org



Parent Handbook (SPA)

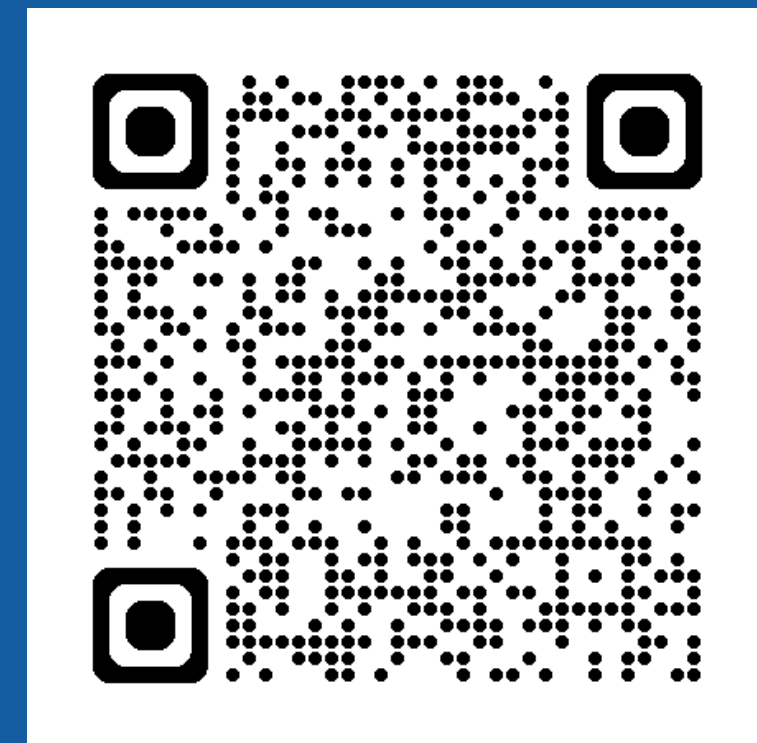
LIFESPAN SUPPORT SERVICES

LIFESPAN SUPPORT SERVICES

(805) 452-8789 | AlphaFRC.org

4501 Cathedral Oaks Road, Santa Barbara, CA 93110

Alpha Resource Center is a 501(c)(3) Non-Profit Corporation.
All donations are tax-deductible. Federal Identification #95-196695



EFFECTIVE COMMUNICATION WITH SCHOOL STAFF

01

Building Collaborative Relationships

- Teacher
- Counselors

02

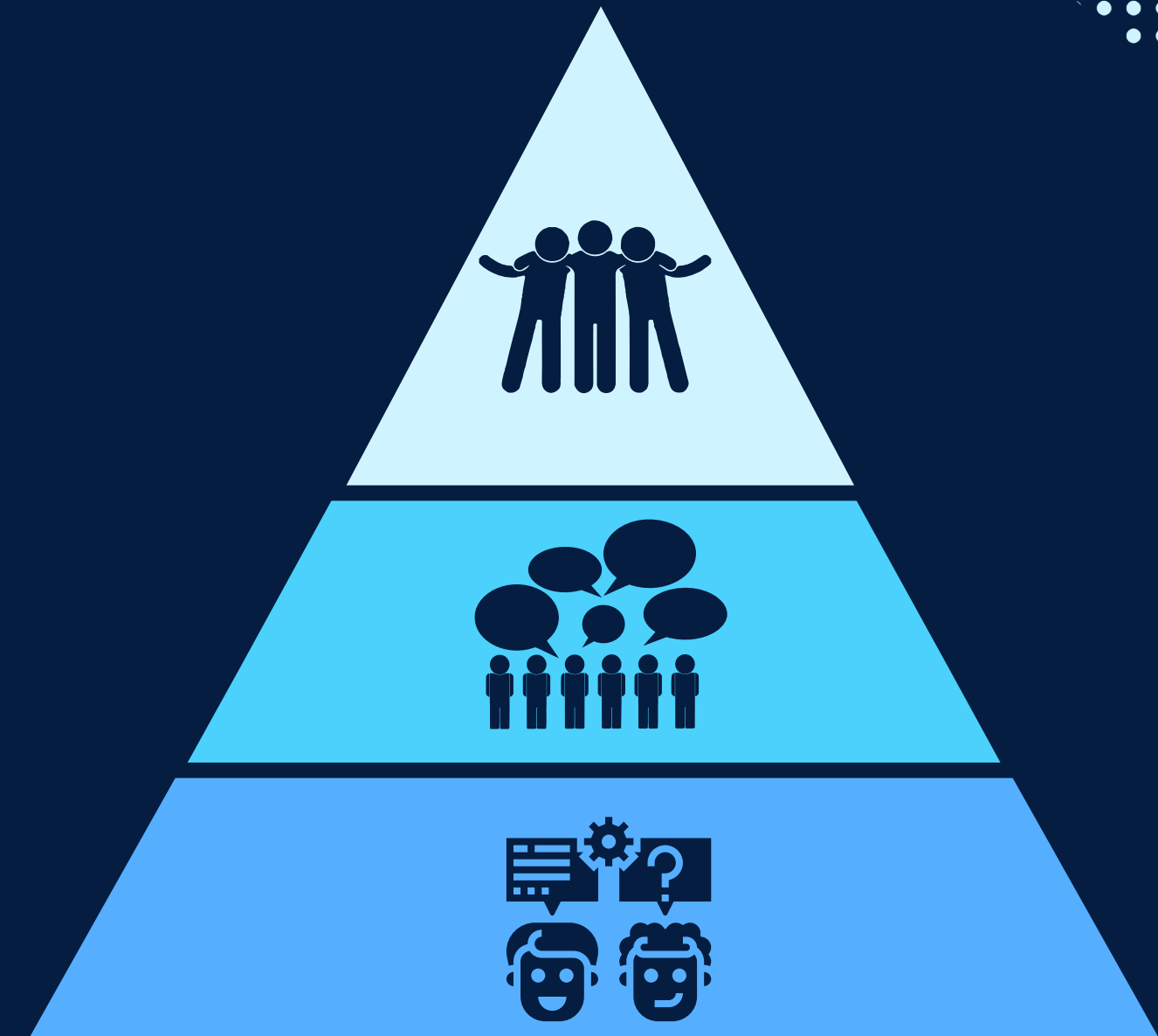
Effective Communication/ Advocacy Strategies

- Parent Square
- Email
- phone call

03

Importance of Regular Check-Ins

- Aeries
- Child
- Staff





QUESTIONS/CONCERNS





Thanks For Coming !



Connect with us.

www.smjuhsd.k12.ca.us

[Righetti High School](#)

[Pioneer Valley High School](#)

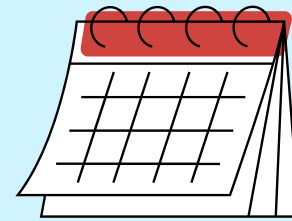
[Santa Maria High School](#)

[CTE Center & Agricultural Farm](#)

*Please grab our book resources
on your way out !*



NEXT MEETING :



MARCH 13, 2025