

# Georgia Milestones

4th Grade



Ms. Bridges, Mrs. Fulghum, Mrs. Hall, & Mrs. Harvey

**Thank you for coming! To help us make the most of this session, please...**

- **Turn on your cameras.**
- **Mute your microphone. (this can cause interference with the background noise)**
- **Take notes and jot down questions to ask at the end of the session or type them into the chat box.**

**Let's get started!**

# What is the Georgia Milestone Assessment?

- An online assessment in which students will be required to answer selected response, constructed response, extended response, and technology enhanced questions about the content they have learned this school year.



## Milestone Dates:

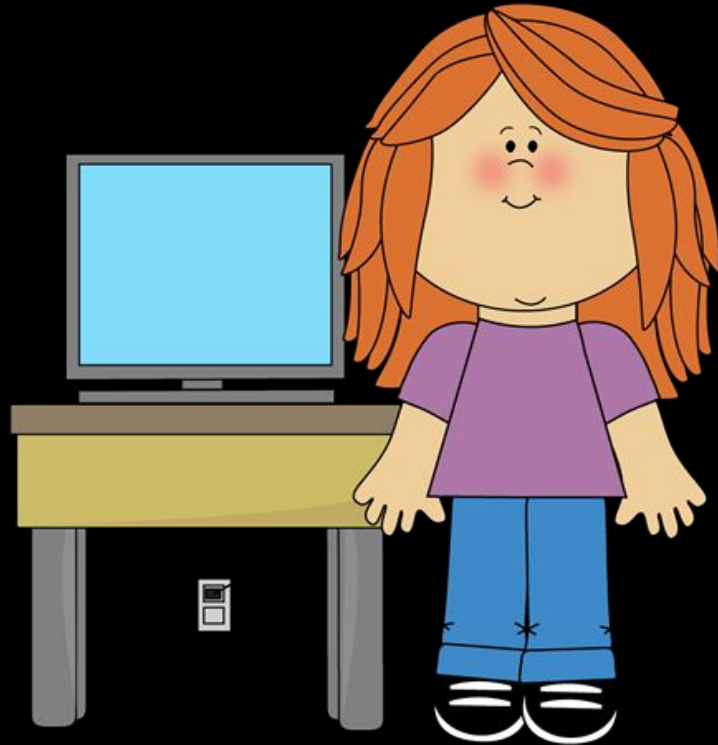
Mark your calendars!

- April 28: Math Section 1
- April 29: Math Section 2
- May 2: ELA Section 1
- May 3: ELA Section 2
- May 4: ELA Section 3

Month						
Sun	Mon	Tue	Wed	Thu	Fri	Sat



Let's talk about the types of questions that our students might see.



## What is selected response? **Multiple Choice**

Why is the picture of the cheetah **MOST LIKELY** included in the article?

- A. to show that a cheetah likes to sit in the grass
- B. to show the way a cheetah hunts animals in the grass
- C. to show that a cheetah is the same height as the grass
- D. to show the way a cheetah uses its spots to hide in the grass

Tina and her class collected soda cans for recycling. They collected 738 cans. Tina's teacher wants to know how many cans the class collected rounded to the nearest hundred.

What is 738 rounded to the nearest hundred?

- A. 700
- B. 730
- C. 740
- D. 800







# What is technology enhanced?

Question 8

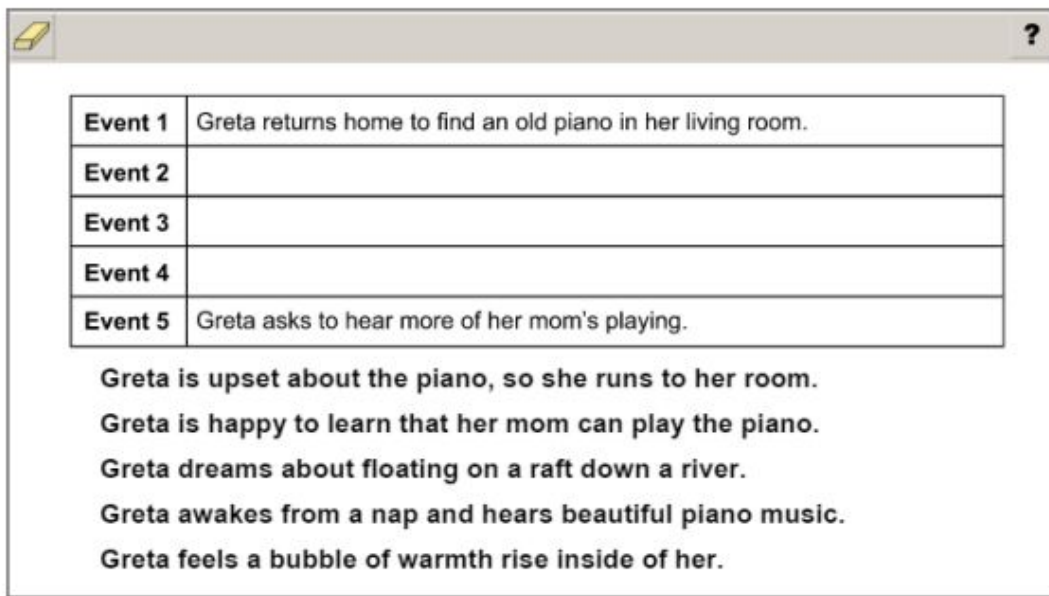
Jorge recorded the shoe color of each of the 12 players on the basketball team. Of the players, 6 wore white shoes, 2 wore black shoes, and the rest wore blue shoes.

Complete the bar graph to display Jorge's information.

Color	Number of Players
white	6
black	2
blue	4

Review/End Test   Pause   Flag   Options   Back   Next

# What is technology enhanced?



<b>Event 1</b>	Greta returns home to find an old piano in her living room.
<b>Event 2</b>	
<b>Event 3</b>	
<b>Event 4</b>	
<b>Event 5</b>	Greta asks to hear more of her mom's playing.


**Greta is upset about the piano, so she runs to her room.**

**Greta is happy to learn that her mom can play the piano.**

**Greta dreams about floating on a raft down a river.**


**Greta awakes from a nap and hears beautiful piano music.**

**Greta feels a bubble of warmth rise inside of her.**

 Use a mouse, touchpad, or touchscreen to move the descriptions below the table into the boxes in the table.

# What is technology enhanced?

Read the paragraph from a student's informational essay. Move the TWO ideas that BEST develop the topic onto the blank lines.

 ?

The tropical grasslands of Africa provide a special habitat for many types of animals. **Some of these animals include elephants, zebras, giraffes, and gazelles.**

---

Grasslands, also known as savannas, are large areas covered with many types of long grasses and few trees or bushes. Although the rich plant life of the savanna provides a plentiful food source for animals, the weather can be quite harsh.

**The savanna can have days of pouring rain and months when rain is scarce.**

---

The animals that live in the savanna have learned to adapt to these unique conditions.

**Millions of people travel to Africa to see the plants and animals of the savanna.**

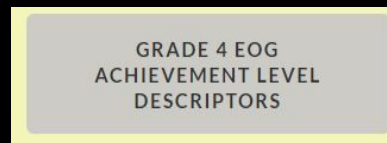
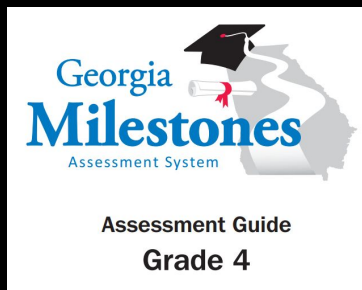
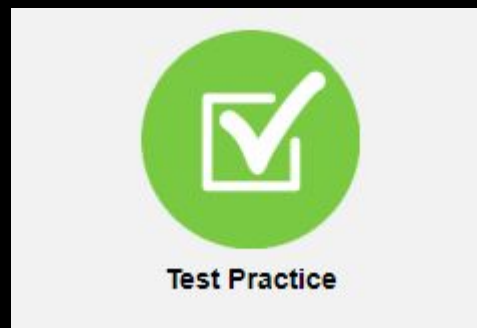
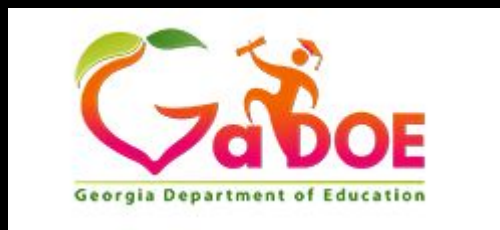
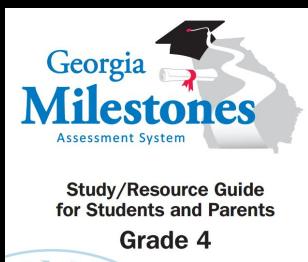
**The savannas of Africa have a rainforest on one side and a desert on the other side.**

**Many animals that thrive in the savanna are herbivores, which means they eat plants.**

## What can I do?

- Lots of encouragement! They are ready!
- Remind them to read all directions, take their time, and review their work.
- Explain that this is their chance to show off what they know.
- Point out that some items will be challenging, but don't give up.
- Get a good night's sleep each night.
- Remind them to eat a good breakfast.
- Make sure they are ON TIME. They should be at school BEFORE 8:30.

# Where can I find more information and/or practice for my child?



When will I know my child's results?

- We will notify you when results are ready.

Questions?

