

FHS Shorts

① ♩ = 152

Musical notation for exercise 1, measures 1-4. The piece is in 4/4 time with a key signature of one flat (B-flat). It features two triplet markings over the first and third measures. The notes are: G2 (quarter), A2 (quarter), B1 (quarter), G2 (quarter), F2 (quarter), E2 (quarter), D2 (quarter), C2 (quarter).

② *Swing!* ♩ = ♩³ ♩

Musical notation for exercise 2, measures 1-4. The piece is in 4/4 time with a key signature of one flat (B-flat). It features a 'Swing!' tempo marking and a triplet of eighth notes. The notes are: G2 (quarter), A2 (quarter), B2 (quarter), G2 (quarter), F2 (quarter), E2 (quarter), D2 (quarter), C2 (quarter).

17

Musical notation for exercise 2, measures 17-20. The piece is in 4/4 time with a key signature of one flat (B-flat). The notes are: G2 (quarter), A2 (quarter), B2 (quarter), G2 (quarter), F2 (quarter), E2 (quarter), D2 (quarter), C2 (quarter).

③

Musical notation for exercise 3, measures 1-4. The piece is in 4/4 time with a key signature of one flat (B-flat). It features accents (^) over the first and third notes of each measure. The notes are: G2 (quarter), A2 (quarter), B2 (quarter), G2 (quarter), F2 (quarter), E2 (quarter), D2 (quarter), C2 (quarter).

23

Musical notation for exercise 3, measures 23-26. The piece is in 4/4 time with a key signature of one flat (B-flat). It features accents (^) over the first and third notes of each measure. The notes are: G2 (quarter), A2 (quarter), B2 (quarter), G2 (quarter), F2 (quarter), E2 (quarter), D2 (quarter), C2 (quarter).

④

♩ = 112

Musical notation for exercise 4, measures 1-4. The piece is in 6/8 time with a key signature of one flat (B-flat). The notes are: G2 (quarter), A2 (quarter), B2 (quarter), G2 (quarter), F2 (quarter), E2 (quarter), D2 (quarter), C2 (quarter).

31

Musical notation for exercise 4, measures 31-34. The piece is in 6/8 time with a key signature of one flat (B-flat). The notes are: G2 (quarter), A2 (quarter), B2 (quarter), G2 (quarter), F2 (quarter), E2 (quarter), D2 (quarter), C2 (quarter).

37

Musical notation for exercise 4, measures 37-40. The piece is in 6/8 time with a key signature of one flat (B-flat). The notes are: G2 (quarter), A2 (quarter), B2 (quarter), G2 (quarter), F2 (quarter), E2 (quarter), D2 (quarter), C2 (quarter).

FHS Shorts

① ♩ = 152

Exercise 1, measures 1-5. The music is in bass clef, 4/4 time, and B-flat major. It features a rhythmic pattern of eighth and sixteenth notes with accents. Measure 5 is marked with a '5' and a fermata.

② Swing! ♩ = ♩³ = ♩

Exercise 2, measures 1-17. The music is in bass clef, 4/4 time, and B-flat major. It is marked 'Swing!' and 'f'. It features a rhythmic pattern of eighth and sixteenth notes with accents and a triplet. Measure 17 is marked with a '17' and a fermata.

③

Exercise 3, measures 1-23. The music is in bass clef, 4/4 time, and B-flat major. It features a rhythmic pattern of eighth and sixteenth notes with accents and slurs. Measure 23 is marked with a '23' and a fermata.

④ ♩ = 112

Exercise 4, measures 1-32. The music is in bass clef, 6/8 time, and B-flat major. It features a rhythmic pattern of eighth and sixteenth notes with accents. Measure 32 is marked with a '32' and a fermata.

FHS Shorts

① ♩ = 152

Exercise 1, measures 1-5. Bass clef, 4/4 time signature. The music consists of eighth and sixteenth notes with accents. Measure 5 is marked with a '5' and a fermata.

② *Swing!* ♩ = ♩³ ♩

Exercise 2, measures 1-17. Bass clef, 4/4 time signature. The music is in a swing feel and includes a triplet of eighth notes. Measure 17 is marked with a '17' and a fermata. The dynamic marking *f* is present.

③

Exercise 3, measures 1-23. Bass clef, 4/4 time signature. The music features chords and eighth notes. Measure 23 is marked with a '23' and a fermata.

④ ♩ = 112

Exercise 4, measures 1-32. Bass clef, 6/8 time signature. The music consists of eighth notes. Measure 32 is marked with a '32' and a fermata.

FHS Shorts

① $\text{♩} = 152$

Musical notation for exercise 1, measures 1-5. The key signature is one sharp (F#) and the time signature is 4/4. The music consists of eighth and sixteenth notes with various articulations like accents and slurs.

Musical notation for exercise 1, measures 6-10. Measure 6 starts with a '6' above the staff. Measure 7 has a '2' above it. The notation includes eighth notes, quarter notes, and chords with slurs and accents.

② **Swing!** $\text{♩} = \text{♩}^3$

Musical notation for exercise 2, measures 1-5. The key signature is one sharp (F#) and the time signature is 4/4. The tempo is marked 'Swing!'. The music features eighth notes with accents and slurs, and a dynamic marking of *f* at the beginning.

③

Musical notation for exercise 3, measures 1-5. The key signature is one sharp (F#) and the time signature is 4/4. The music consists of eighth notes with accents and slurs.

Musical notation for exercise 3, measures 6-10. Measure 6 starts with a '23' above the staff. The notation includes eighth notes, quarter notes, and chords with slurs and accents.

④ $\text{♩} = 112$

Musical notation for exercise 4, measures 1-5. The key signature is two flats (B \flat , E \flat) and the time signature is 6/8. The music consists of quarter and eighth notes.

Musical notation for exercise 4, measures 6-10. Measure 6 starts with a '34' above the staff. The notation includes quarter and eighth notes with slurs.

FHS Shorts

① ♩ = 152



② Swing! ♩ = ♩³



④ ♩ = 112



FHS Shorts

① $\text{♩} = 152$

Musical notation for exercise 1, measures 1-4. The key signature is two sharps (F# and C#), and the time signature is 4/4. The first measure contains a triplet of eighth notes. The second measure is a whole rest. The third measure contains a quarter note followed by a dotted quarter note. The fourth measure contains a triplet of eighth notes. There are dynamic markings of v (piano) under the notes in measures 1, 3, and 4.

② **Swing!** $\text{♩} = \text{♩}^3$

Musical notation for exercise 2, measures 1-16. The key signature is one sharp (F#), and the time signature is 4/4. The piece is in a swing feel. The notation consists of eighth and quarter notes with various accents and dynamic markings. A f (forte) dynamic marking is present at the beginning of the first measure. There are v (piano) dynamic markings under several notes throughout the passage.

Musical notation for exercise 2, measures 17-23. The key signature is one sharp (F#), and the time signature is 4/4. The notation continues with eighth and quarter notes. A fermata is placed over the final note of the passage in measure 23.

Musical notation for exercise 3, measures 1-23. The key signature is one sharp (F#), and the time signature is 4/4. The notation features eighth and quarter notes with accents and dynamic markings. There are v (piano) dynamic markings under several notes.

Musical notation for exercise 3, measures 24-30. The key signature is one sharp (F#), and the time signature is 4/4. The notation continues with eighth and quarter notes. There are v (piano) dynamic markings under several notes.

④ $\text{♩} = 112$

Musical notation for exercise 4, measures 1-30. The key signature is one sharp (F#), and the time signature is 6/8. The notation consists of eighth and quarter notes.

Musical notation for exercise 4, measures 31-36. The key signature is one sharp (F#), and the time signature is 6/8. The notation continues with eighth and quarter notes.

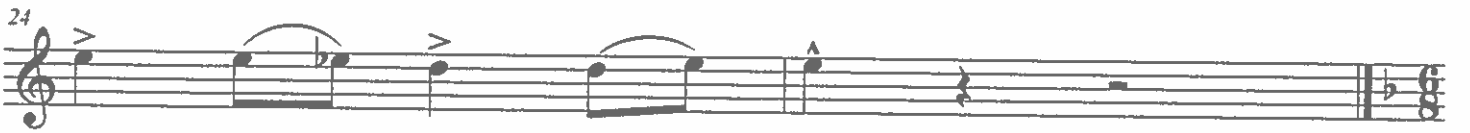
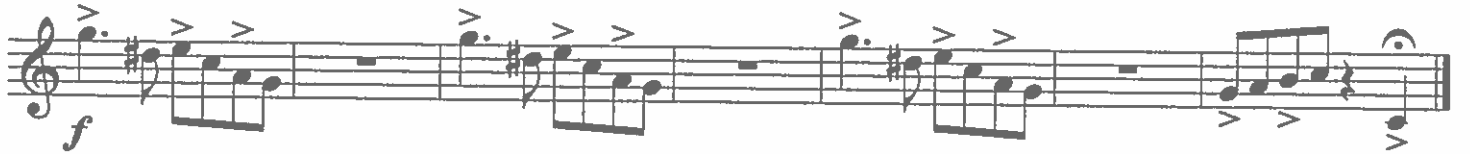
Musical notation for exercise 4, measures 37-42. The key signature is one sharp (F#), and the time signature is 6/8. The notation continues with eighth and quarter notes.

FHS Shorts

① $\text{♩} = 152$



② **Swing!** $\text{♩} = \text{♩}^3$



④ $\text{♩} = 112$



FHS Shorts

① ♩ = 152

Musical notation for exercise 1, measures 1-4 and 5-8. The key signature is one sharp (F#) and the time signature is 4/4. The tempo is marked as ♩ = 152. The notation includes eighth and sixteenth notes with accents (>) and a double bar line with a repeat sign at the end of measure 8.

② Swing! ♩ = ♩³ ♩

Musical notation for exercise 2, measures 1-16 and 17-18. The key signature is one sharp (F#) and the time signature is 4/4. The tempo is marked as Swing! with a triplet symbol. The dynamic marking *f* is present. The notation includes eighth notes, quarter notes, and a triplet of eighth notes with accents (>). Measure 17 ends with a fermata over a half note.

③

Musical notation for exercise 3, measures 1-22 and 23-26. The key signature is one sharp (F#) and the time signature is 4/4. The notation includes eighth notes, quarter notes, and chords with accents (>) and slurs. Measure 23 starts with a fermata over a half note.

④ ♩ = 112

Musical notation for exercise 4, measures 1-33 and 34-37. The key signature is one sharp (F#) and the time signature is 6/8. The tempo is marked as ♩ = 112. The notation includes quarter notes, eighth notes, and chords with accents (>) and slurs. Measure 34 starts with a fermata over a half note.

FHS Shorts

① ♩ = 152

Musical notation for exercise 1, measures 1-16. The piece is in 4/4 time with a key signature of one sharp (F#). It features a melodic line with eighth-note patterns and rests, with dynamic markings such as *mf* and *f*. A fermata is placed over the final note of the exercise.

② Swing! ♩ = ♩³ ♩

Musical notation for exercise 2, measures 1-16. The piece is in 4/4 time with a key signature of one sharp (F#). It features a rhythmic pattern of eighth notes with a triplet of eighth notes in the second measure. Dynamic markings include *mf* and *f*.

17

Musical notation for exercise 2, measures 17-16. The piece continues with eighth-note patterns and rests, ending with a fermata over the final note.

③

Musical notation for exercise 3, measures 1-22. The piece is in 4/4 time with a key signature of one sharp (F#). It features a rhythmic pattern of eighth notes with accents. Dynamic markings include *mf* and *f*.

23

Musical notation for exercise 3, measures 23-22. The piece continues with eighth-note patterns and rests, ending with a fermata over the final note.

④ ♩ = 112

Musical notation for exercise 4, measures 1-30. The piece is in 6/8 time with a key signature of two flats (Bb, Eb). It features a rhythmic pattern of eighth notes with accents. Dynamic markings include *mf* and *f*.

31

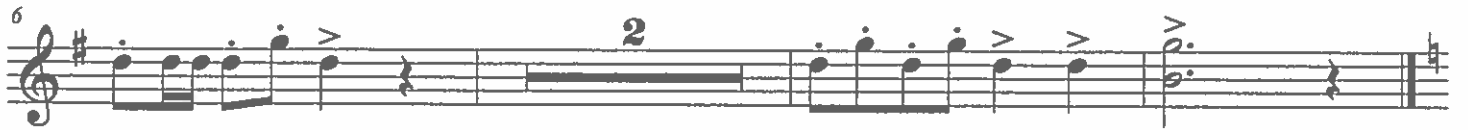
Musical notation for exercise 4, measures 31-36. The piece continues with eighth-note patterns and rests, ending with a fermata over the final note.

37

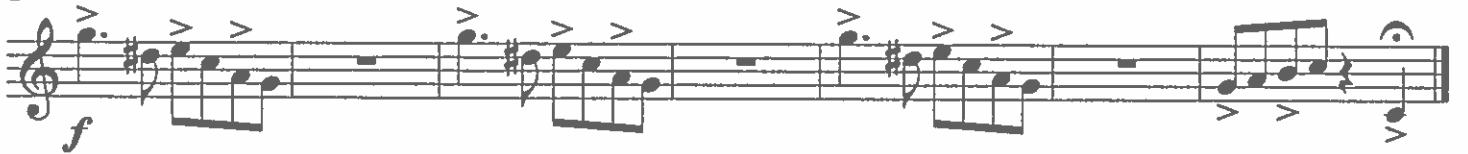
Musical notation for exercise 4, measures 37-36. The piece continues with eighth-note patterns and rests, ending with a fermata over the final note.

FHS Shorts

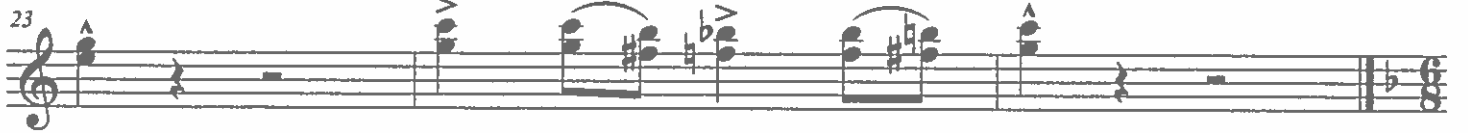
① $\text{♩} = 152$



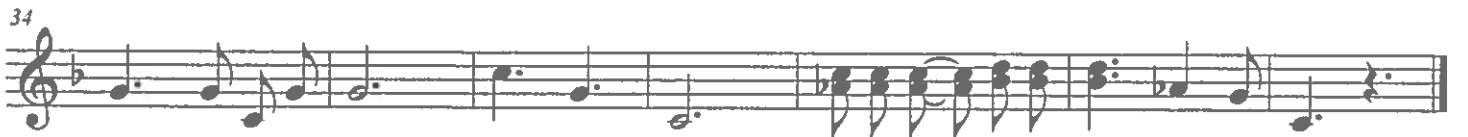
② Swing! $\text{♩} = \text{♩}^3 \text{♩}$



③



④ $\text{♩} = 112$



FHS Shorts

① ♩ = 152

Musical notation for exercise 1, measures 1-5. The piece is in 4/4 time with a tempo of 152. It features a melodic line with eighth and sixteenth notes, including accents and slurs. Measure 5 is marked with a '5' and a '2' below the staff.

② *Swing!* ♩ = ♩³

Musical notation for exercise 2, measures 6-16. The tempo is marked as a swing. The notation includes a dynamic marking of *f* and a triplet of eighth notes. Measures 17-16 are shown on a separate line.

③

Musical notation for exercise 3, measures 17-22. The notation features eighth and sixteenth notes with various articulations and slurs.

④ ♩ = 112

Musical notation for exercise 4, measures 23-33. The tempo is marked as 112. The notation includes dotted rhythms and slurs. Measures 34-33 are shown on a separate line.