

ISSUE NO. 13

OCTOBER, 2025

TECH TIMES MONTHLY NEWSLETTER



• OCTOBER •
**NATIONAL
CYBER SECURITY
AWARENESS MONTH**

Inside This Issue:

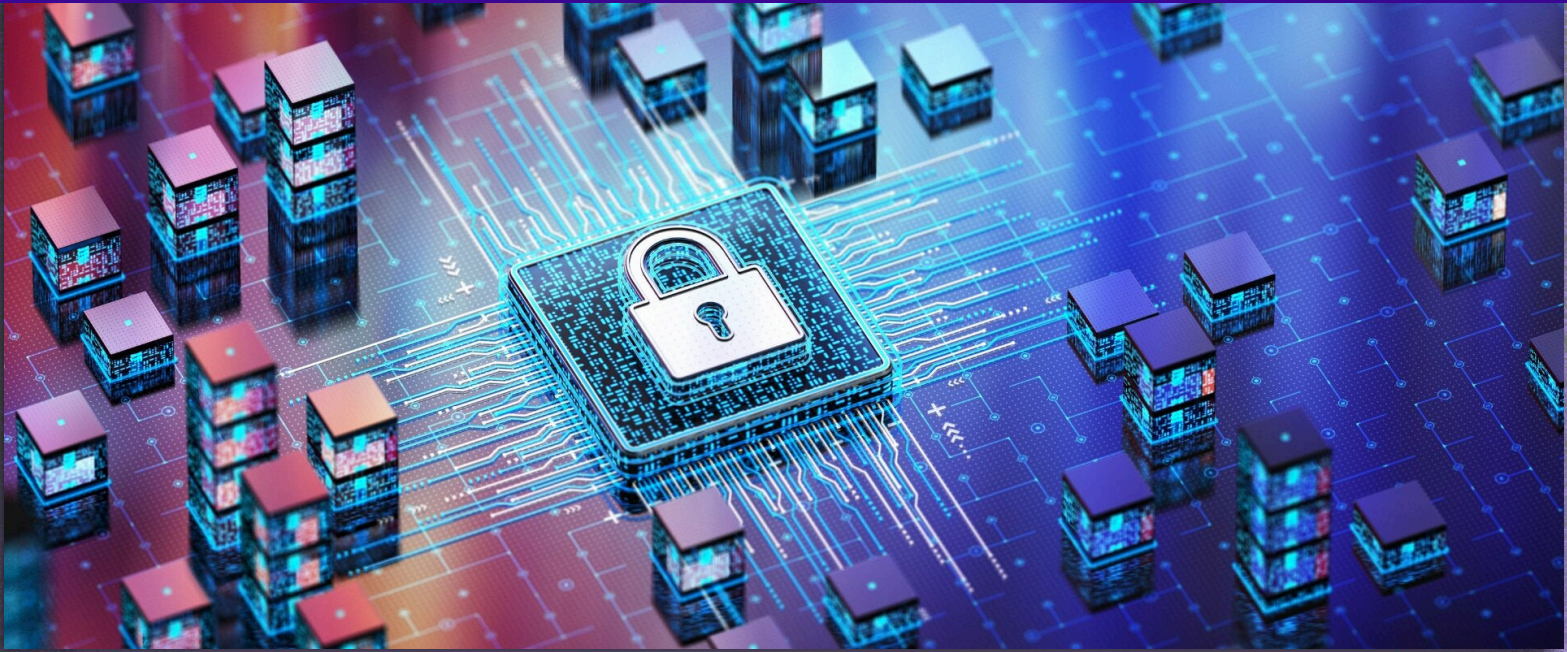
Did You Know?	Pg. 1
Cyber Awareness Best Practices	Pg. 2
National Cybersecurity Alliance	Pg. 3
ClassLink Launchpad Animation	Pg. 3
Googley Halloween Activities	Pg. 3
Use of AI Tools/Google Gemini	Pg. 4/5

DID YOU KNOW?

- A cyber-attack occurs every 39 seconds, or 2,244 times per day.
- Human error accounts for 95% of cyber-attacks..
- Cyber crime costs are expected to escalate to almost \$14 trillion by 2028.
- Email scams are among the most financially damaging online crimes.
- 30% of users in the education sector are victims of phishing.
- Schools are the most lucrative targets for ransomware.
- Security professionals are concerned that hackers will use AI to launch even more sophisticated cyber-attacks.



CYBER AWARENESS BEST PRACTICES



Cyber Awareness is the understanding of online threats, associated risks, and the best practices for protecting against them to prevent data breaches and other cybersecurity incidents. Best practices are to:

- **Use Strong Passwords** - Strong passwords are long, random, and unique and include all four character types (uppercase, lowercase, numbers, and symbols). Password managers are a powerful tool to help you create strong passwords for each of your accounts.
- **Turn on MFA** - You need more than a password to protect your online accounts; enabling MFA makes you significantly less likely to get hacked. Enable MFA on all your online accounts that offer it, especially email, social media, and financial accounts.
- **Recognize Threats and Report Phishing** - Be cautious of unsolicited messages asking for personal information. Avoid sharing sensitive information or credentials with unknown sources. Report phishing attempts and delete the message.
- **Update Software** - Ensuring your software is up to date is the best way to make sure you have the latest security patches and updates on your devices. Regularly check for updates if automatic updates are unavailable. Also use safe protocols for installing new applications.



The National Cybersecurity Alliance is a non-profit organization on a mission to create a more secure, interconnected world. Want to get involved in the alliance? Sign up to stay connected and secure with their newsletter. They have resources for you to explore about online safety and the raise awareness.



On your ClassLink launchpad click on the scarecrow in the bottom left corner for a fun surprise. An animated wallpaper is triggered when you click on it. These icons change every one to two months and they will always do something fun to brighten your day!

Googley Halloween Activities:

Halloween Magnetic Poetry with Google Drawings

Build a Digital Jack-o-Lantern with Google Slides

Haunted House Scene Graphing in Google Sheets

Pumpkin Graphing

Pumpkin Patterns



Halloween

Use of AI Tools



As a reminder, due to a new Tennessee law that went into effect on July 1, 2025, and in accordance with our district's data privacy and security policies, we are no longer able to permit the use of AI tools and other programs on our network with which we do not have a formal agreement. As we continue to implement new policies and filters that enable us to become compliant with the new law, you will continue to notice changes. These changes include, but are not limited to just one platform. They include popular AI tools like ChatGPT and Magic School, as well as any other generative AI services, social media platforms, or programs that our district has not explicitly approved through a data-sharing agreement. We understand that these tools have become a valuable resource for many of you. Therefore, we want to provide you with a secure and approved alternative (Cont'd on page 5).



Our district has a formal agreement with Google, which includes their AI tool, Gemini. We have thoroughly reviewed their data privacy protocols, and we can confirm that when you use Gemini through your fcstn.net account your data is protected and never leaves our domain and your information is never used to train the advancement of AI models. This ensures the highest level of data privacy and security for both you and our students.

If you have created or saved content in other AI platforms (e.g., ChatGPT, Magic School, etc), you can still access it by using a personal device off of the school network. Once accessed, you can send the content to your Google Drive to store it securely.

All new content that you need to create or refine can be generated using Gemini. It is easily accessible as part of our Google Workspace for Education suite.

How to access Google Gemini:

Sign in to your fcstn.net Google account.

Click on the "waffle" icon (the nine dots) in the top-right corner of your Google applications (Gemini should be listed there).

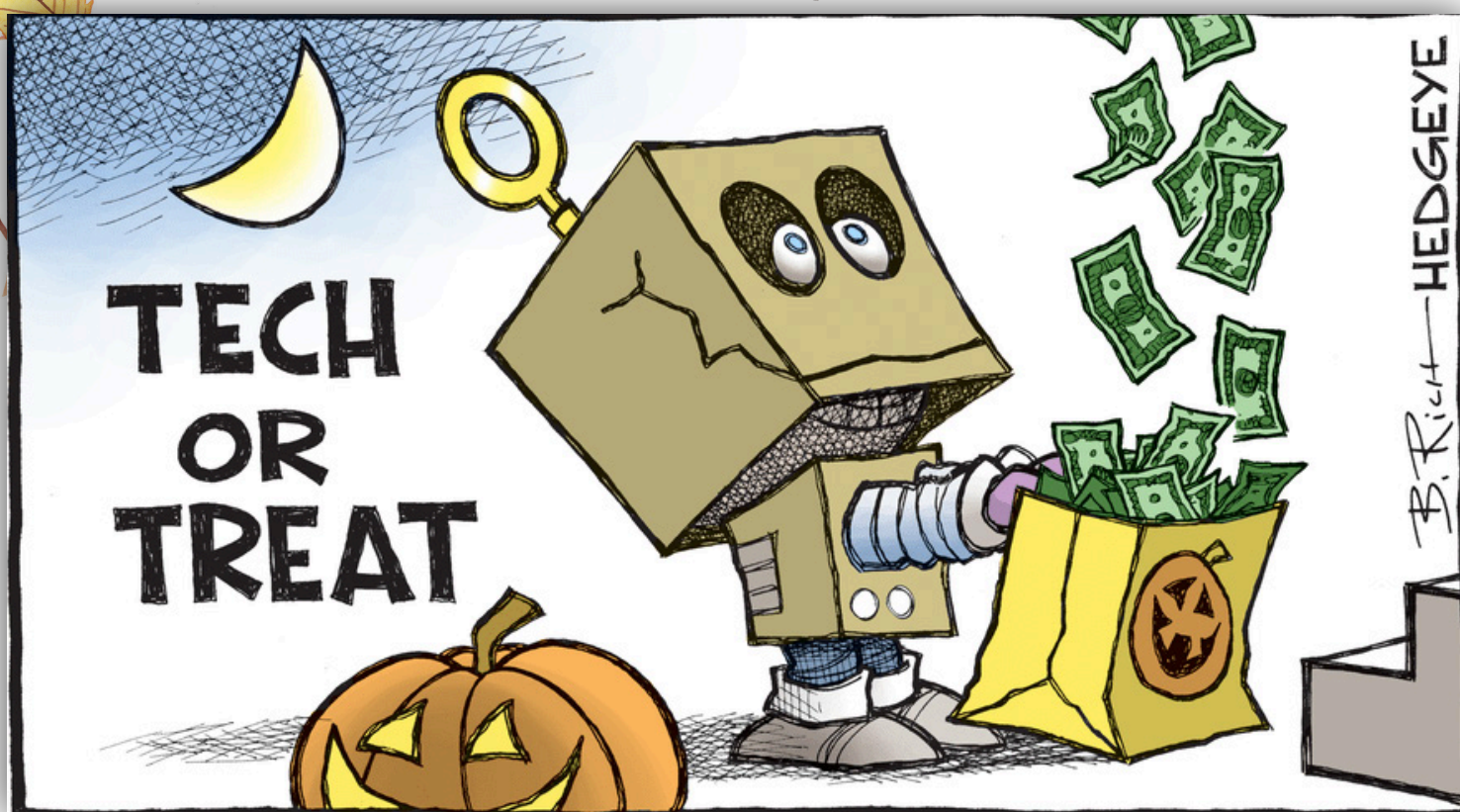
Alternatively, you can navigate directly to gemini.google.com or simply do a Google search for "Gemini."

As long as you are logged into your fcstn.net account, the information you input is protected under our agreement with Google.

We appreciate your understanding and cooperation as we work to comply with state law and maintain a secure and private digital environment for our staff and students.

"THE TECHNOLOGY YOU USE IMPRESSES
NO ONE. THE EXPERIENCE YOU CREATE
WITH IT IS EVERYTHING."

SEAN GERETY



Contact Us:

Help Desk: 931.361.0167

<https://www.fcstn.net/technology>

Submit a Work Ticket