

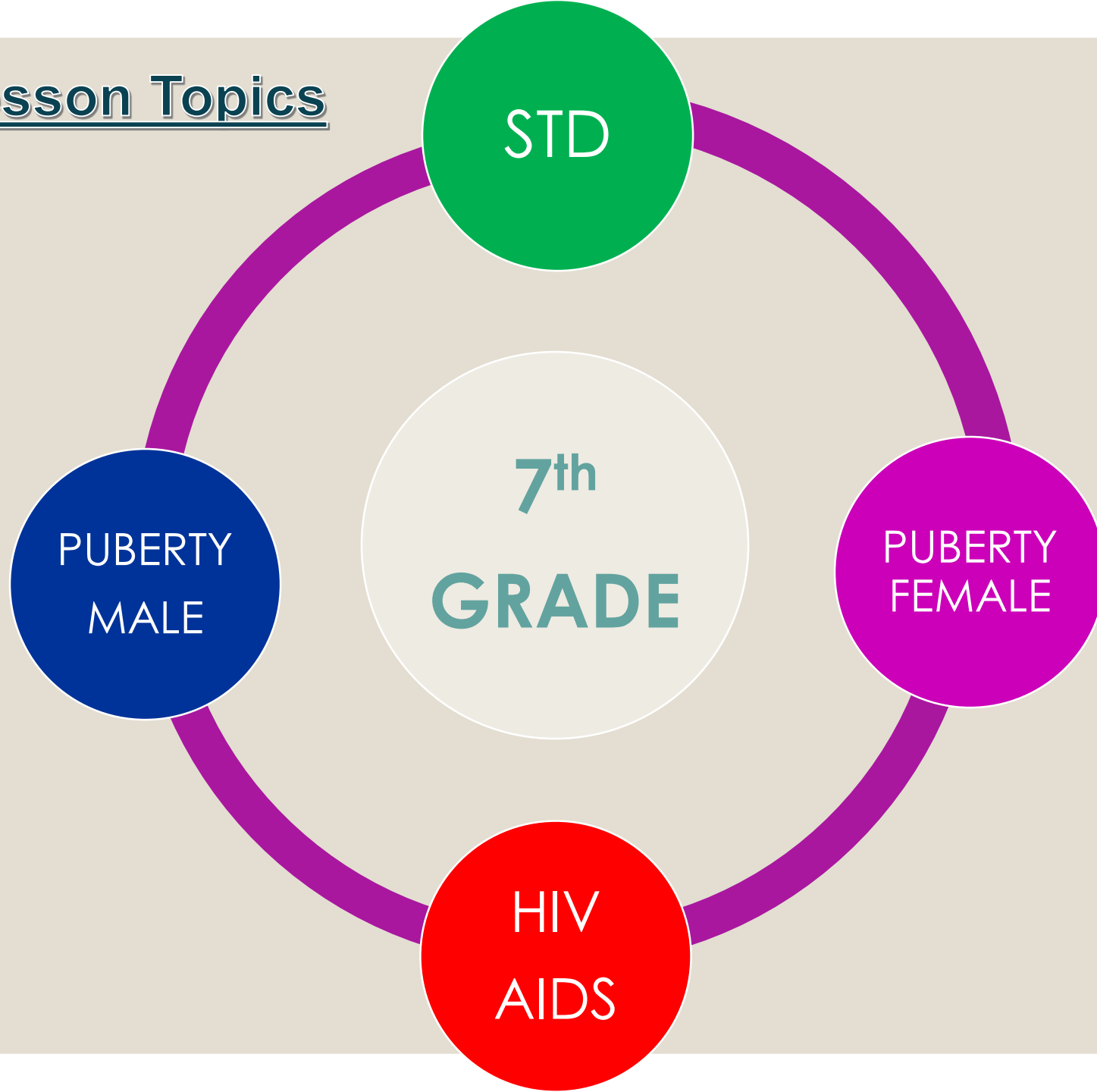


REPRODUCTIVE SYSTEMS:  
MALE AND FEMALE PUBERTY

7<sup>th</sup> Grade

**The mission of Polk County Schools is to provide high quality education for all students.**

## Lesson Topics



# CHAMPS Expectations...

<b>C</b>	Conversation:	Level 0 while teaching
<b>H</b>	Help:	Yes, raise your hand
<b>A</b>	Activity:	Workbooks
<b>M</b>	Movement:	None without permission
<b>P</b>	Participation:	Ask questions & be respectful
<b>S</b>	Success:	YES! Nurse lessons

**BY THE END OF THIS LESSON, YOU SHOULD BE ABLE TO ANSWER:**

What is the period of life during which the reproductive organs begin to function ?

What are the reproductive organs located on the outside of the body called?

What are the names of the female and male sex glands?

## Female Reproductive System Vocabulary

abstinence - not taking part in any high-risk behavior such as sexual activity or drug use, including alcohol and tobacco.

adolescence - the stage of development between childhood and adulthood which includes physical, emotional, and social changes.

anus - opening through which solid waste leaves the body.

bladder - a stretchy sac that stores urine or liquid waste.

cervix - the lower part of the uterus which opens into the vagina.

clitoris - a small, sensitive organ supplied with nerve endings and blood vessels.

estrogen - a hormone produced by the ovaries that controls female development.

fallopian tubes - the tubes through which the ovum (egg cell) passes on the way to the uterus.

fertilization - joining of a sperm with an ovum (egg cell).

**genitals – reproductive organs located on the outside of the body: labia, clitoris and vaginal opening.**

hormone - a chemical that produces physical and emotional changes in the body.

labia – folds of skin on each side of the vaginal opening.

menopause – the permanent ending of menstruation.

menstrual cycle - the time span between the beginning of one menstrual period and the beginning of the next.

menstruation (period) - the normal periodic shedding of the lining of the uterus.

ovaries - the female sex glands which release ova (female sex cells) and produce the hormones estrogen and progesterone.

ovulation - the release of a mature ovum (egg cell) from an ovary.

ovum - the female sex cell (egg cell); (plural: ova).

pituitary gland - (master gland) the gland that causes growth and produces a hormone that stimulates the ovaries to begin functioning.

progesterone - one of the two female hormones produced by the ovaries.

puberty - the period of life during adolescence when one becomes capable of reproduction.

reproduction - the ability to physically produce a baby.

rectum – lower part of the large intestine where solid waste is stored.

urethra – tube through which urine leaves the body.

urine – liquid waste stored in bladder.

uterus (womb) - the muscular hollow pear-shaped organ in which a baby grows and develops during pregnancy.

vagina - the passageway leading from the uterus to the outside of the body.

## **Male Reproductive System Vocabulary**

**abstinence** - not taking part in any high-risk behavior such as sexual activity or drug use, including alcohol and tobacco.

**adolescence** - the stage of development between childhood and adulthood which includes physical, emotional, and social changes.

**anus** - opening through which solid waste leaves the body.

**bladder** - a stretchy sac that stores urine or liquid waste.

**circumcision** - surgical operation to remove the foreskin from the penis.

**ejaculation** - the forceful release of semen from the penis.

**epididymis** - the small body of tubules behind each testicle where immature sperm are stored.

**erection** - the stiffening of the penis.

**fertilization** - the joining of a sperm with an ovum (egg cell).

**foreskin** - fold of skin that covers most of the glans.

**genitals** -reproductive organs located on the outside of the body: penis, scrotum and testicles.

**glans** - tip of the penis.

**hormone** - a chemical that produces physical and emotional changes in the body.

**nocturnal emission** - the release of semen during sleep (also called a wet dream).

**penis** - male sex organ located outside the body.

**pituitary gland** - the gland that produces a hormone that causes growth and stimulates the testicles to begin functioning.

**prostate gland** - a gland located near the bladder which secretes prostate fluid which accounts for 1/3 of the fluid volume of semen.

**puberty** - the period of life during adolescence when one becomes capable of reproduction.

**rectum** - lower part of the large intestine where solid waste is stored.

**scrotum** - the sac of skin that contains the testes.

**semen** - fluid made in the male reproductive organs that contains sperm.

**seminal vesicles** - two small glands that produce a fluid that nourishes and carries sperm.

**sperm** - the male sex cell.

**testicles or testes** - the male sex glands which produce sperm cells and the hormone testosterone.

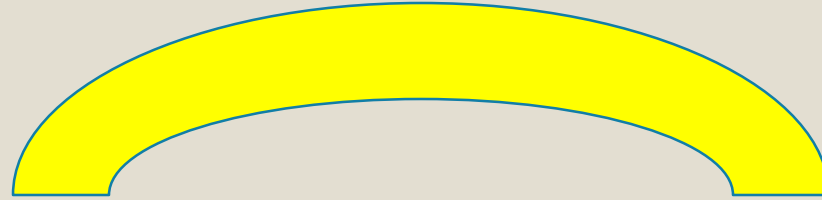
**testosterone** - the hormone secreted by the testicles that is responsible for the primary and secondary sex characteristics.

**urethra** - tube through which urine and semen leave the body.

**urine** - liquid waste that is stored in the bladder.

**vas deferens** - the tube which passes from each testicle to the urethra.

# ADOLESCENCE



**CHILD**  
**11-13**  
**(ENDS)**



**ADULT**  
**18-21**  
**(BEGINS)**



# PUBERTY

**Girls 9-14**

**Boys 10-15**



**PITUITARY GLAND**



**GROWTH  
HORMONE**



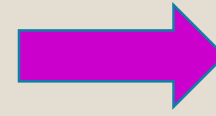
**Sex Glands**

**Females: Ovaries**

**Males: Testicles**



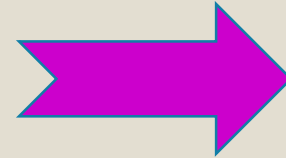
Pituitary Gland



Growth  
Hormone



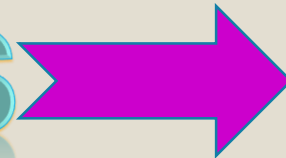
OVARIES



OVA  
MATURE  
(OVULATION)



HORMONES

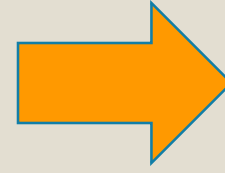


ESTROGEN &  
PROGESTERONE



PHYSICAL CHANGES

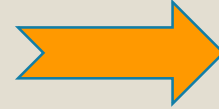
PITUITARY GLAND



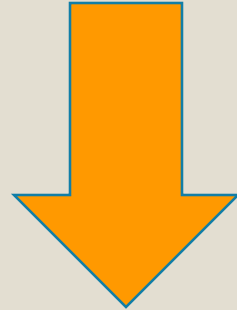
GROWTH  
HORMONE



TESTICLES



*SPERM CELL*



*HORMONE*



*TESTOSTERONE*



**PHYSICAL CHANGES**

BOYS 10-15

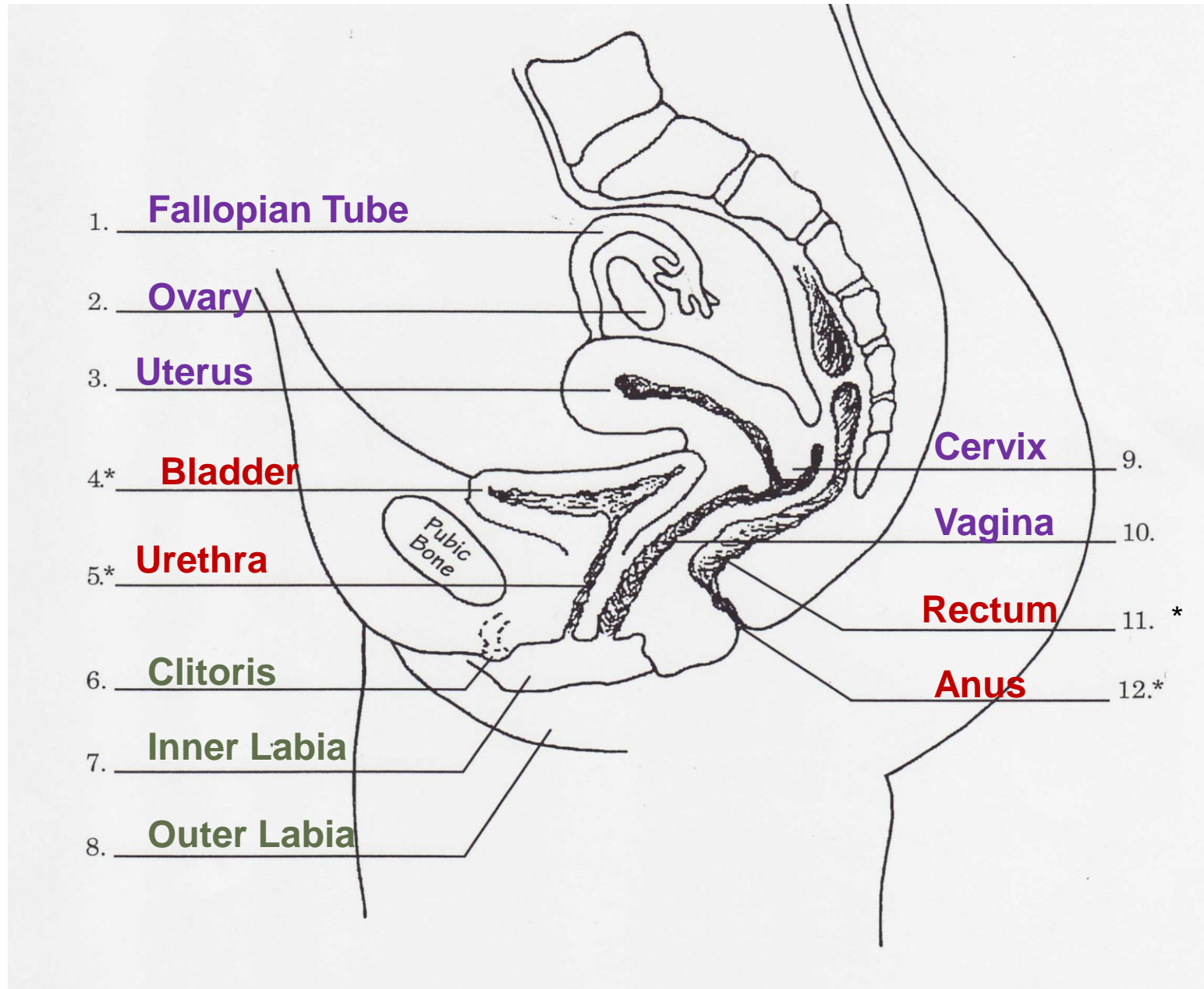
VOICE CHANGES,  
SHOULDERS BROADEN,  
MUSCLES ,  
GENITALS GROW,  
ERECTIONS, SPERM,  
EJACULATION

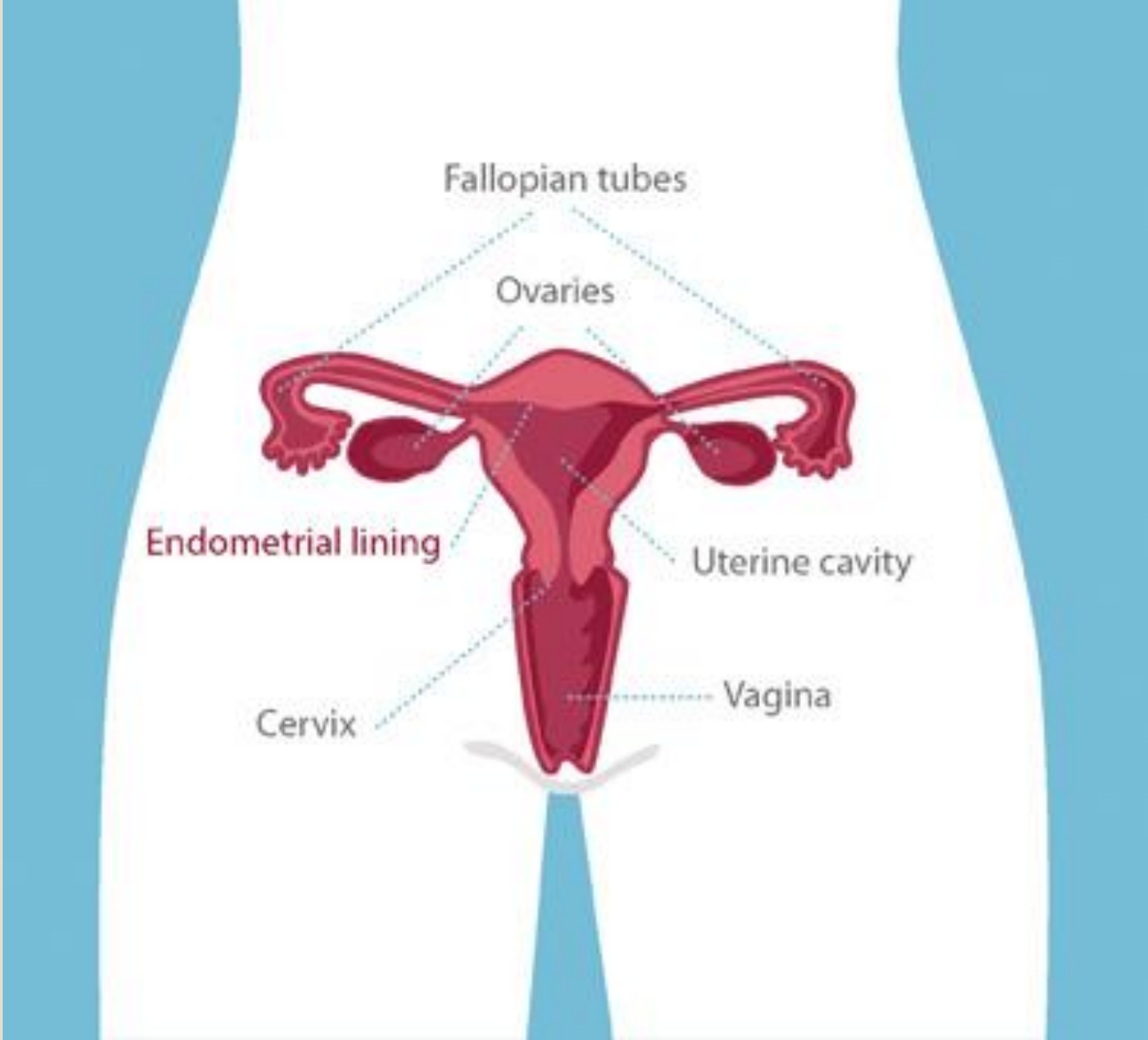
OIL  
GLANDS  
ACNE,  
SWEAT,  
HAIR  
GROWTH

GIRLS 9-14

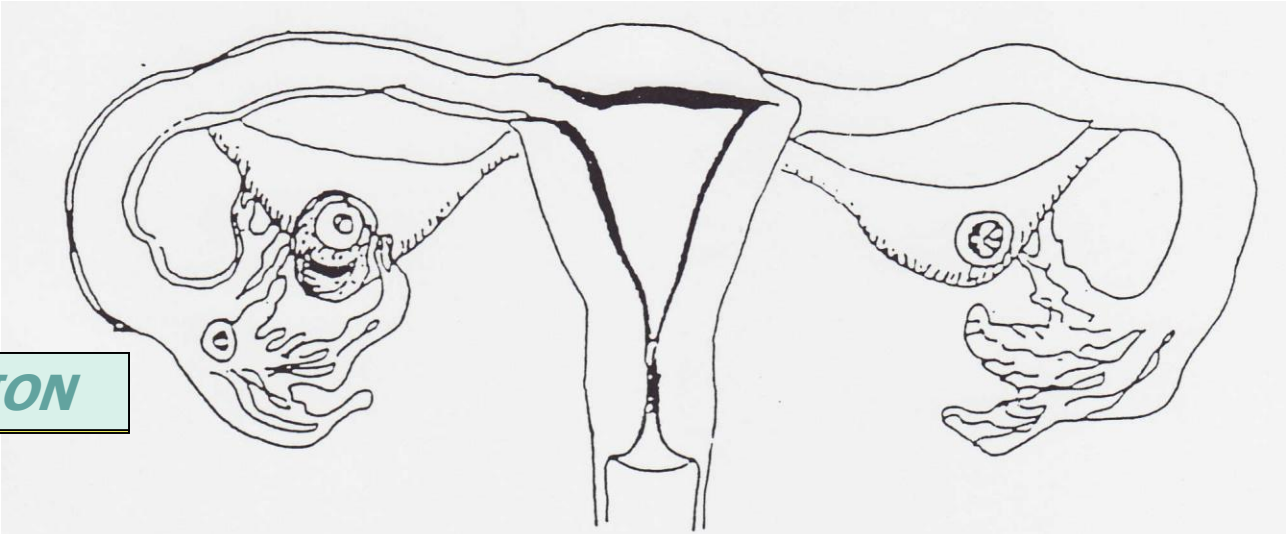
HIPS WIDEN,  
BREAST DEVELOP,  
OVA RELEASED,  
MENSTRUATION

# Female Reproductive System (Side View)

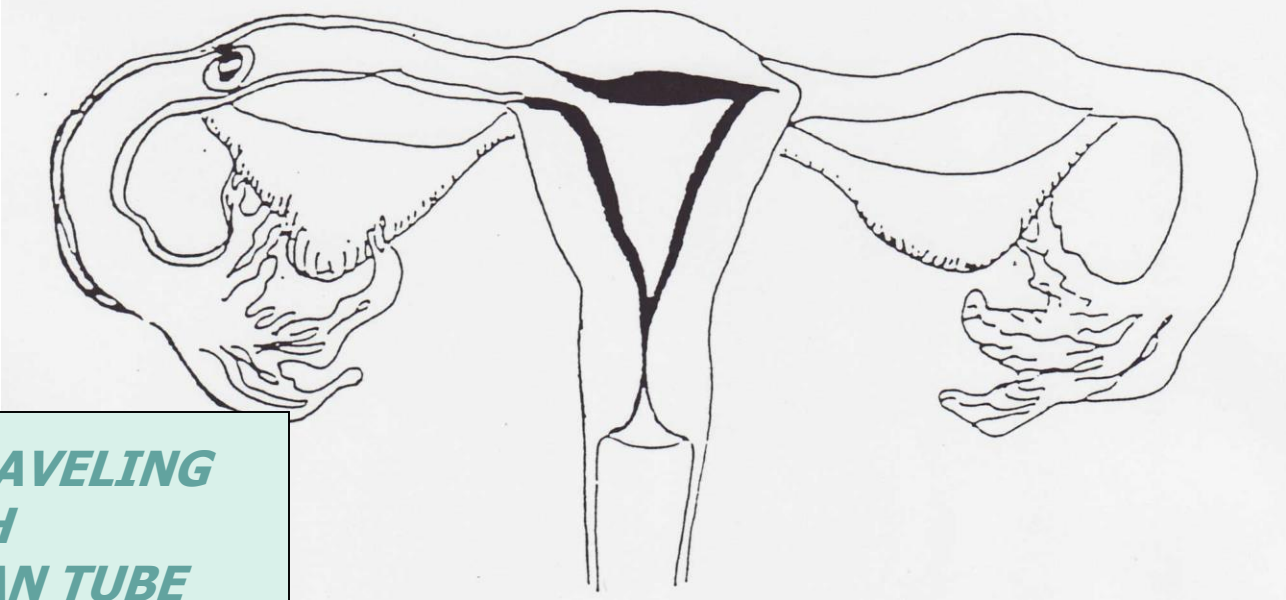




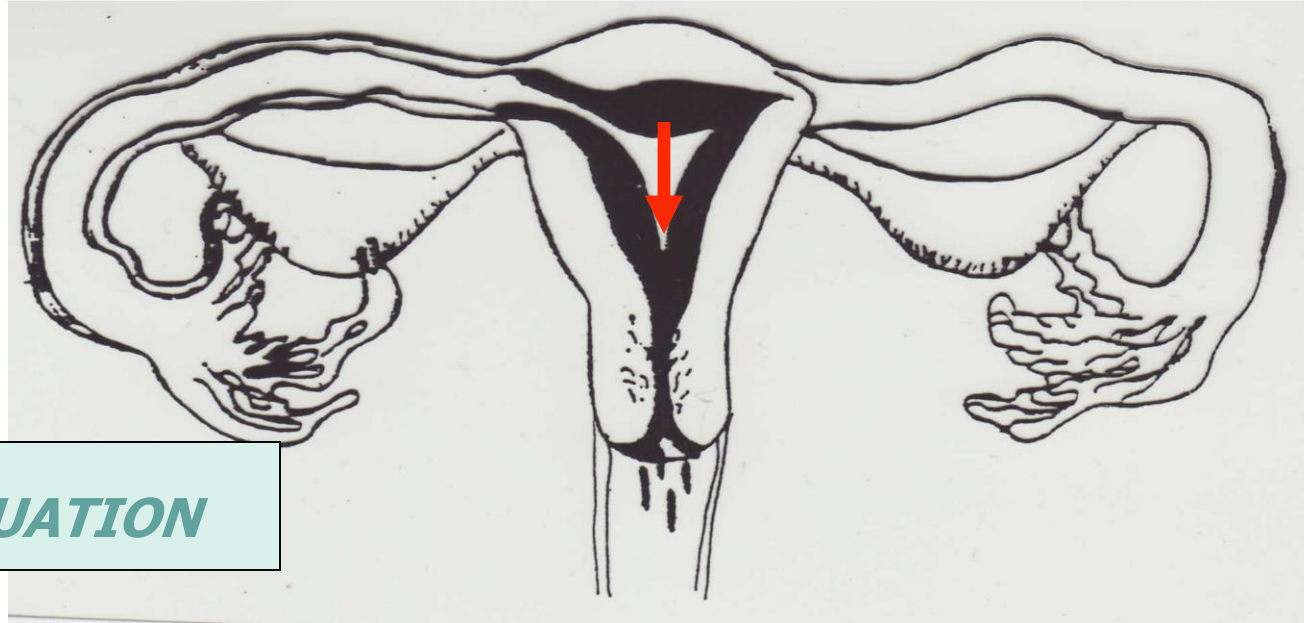
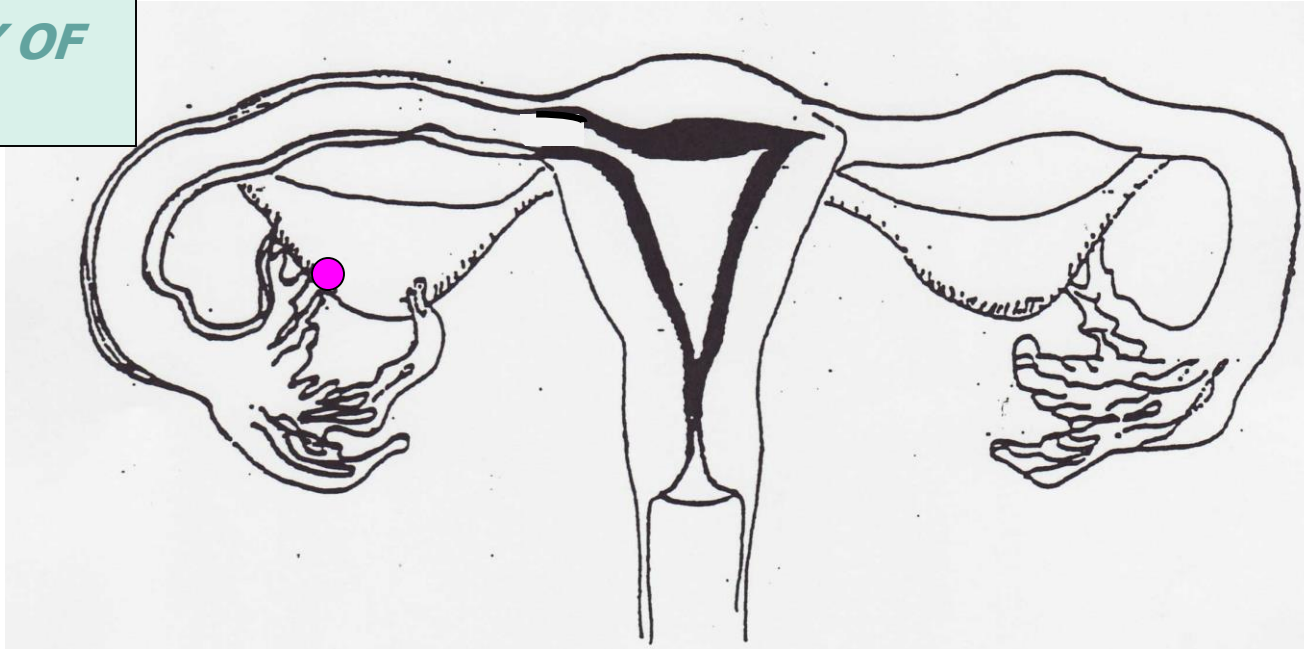
***OVULATION***



***OVUM TRAVELING  
THROUGH  
FALLOPIAN TUBE***



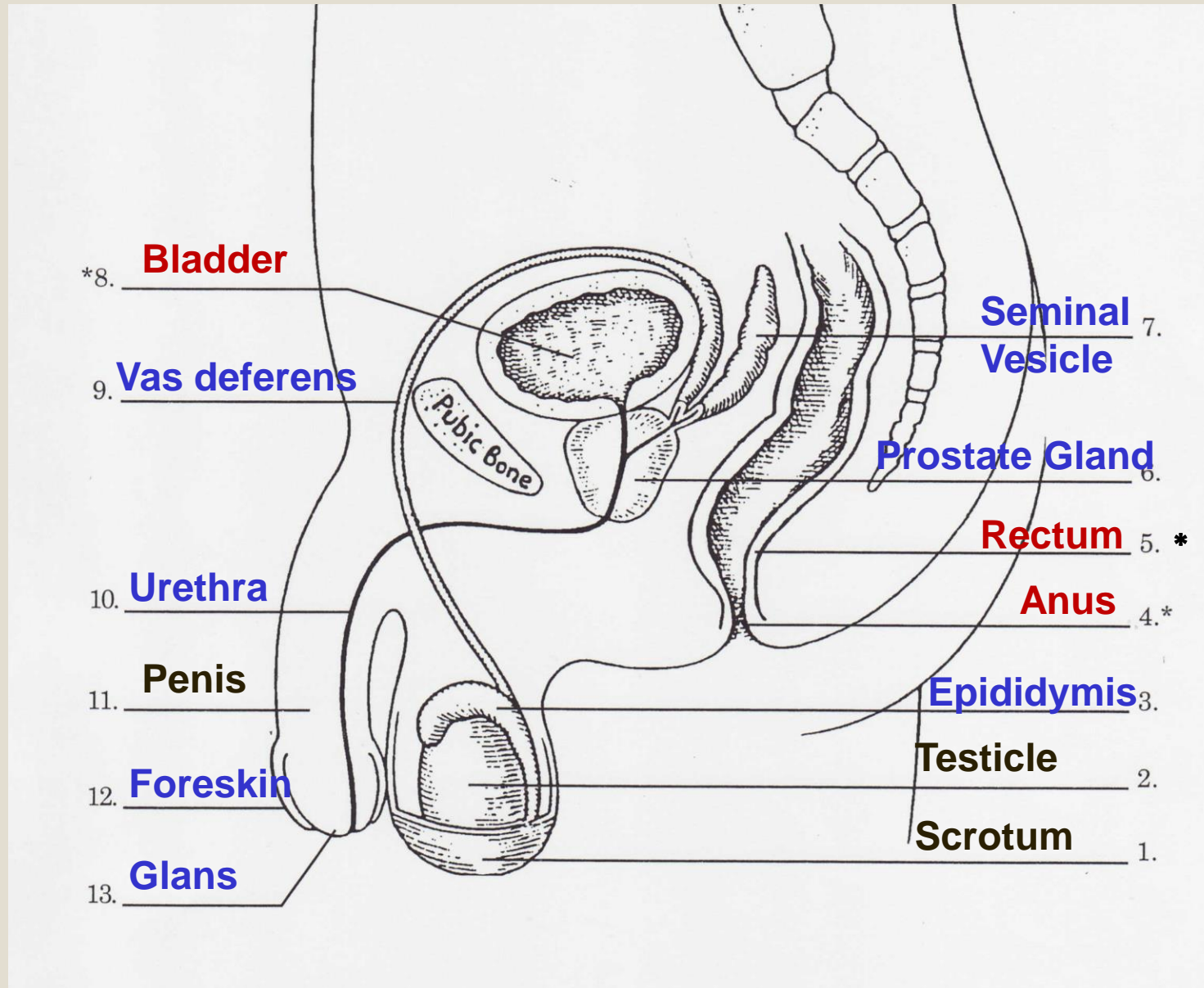
*PATHWAY OF  
OVUM*



*MENSTRUATION*



# MALE REPRODUCTIVE SYSTEM







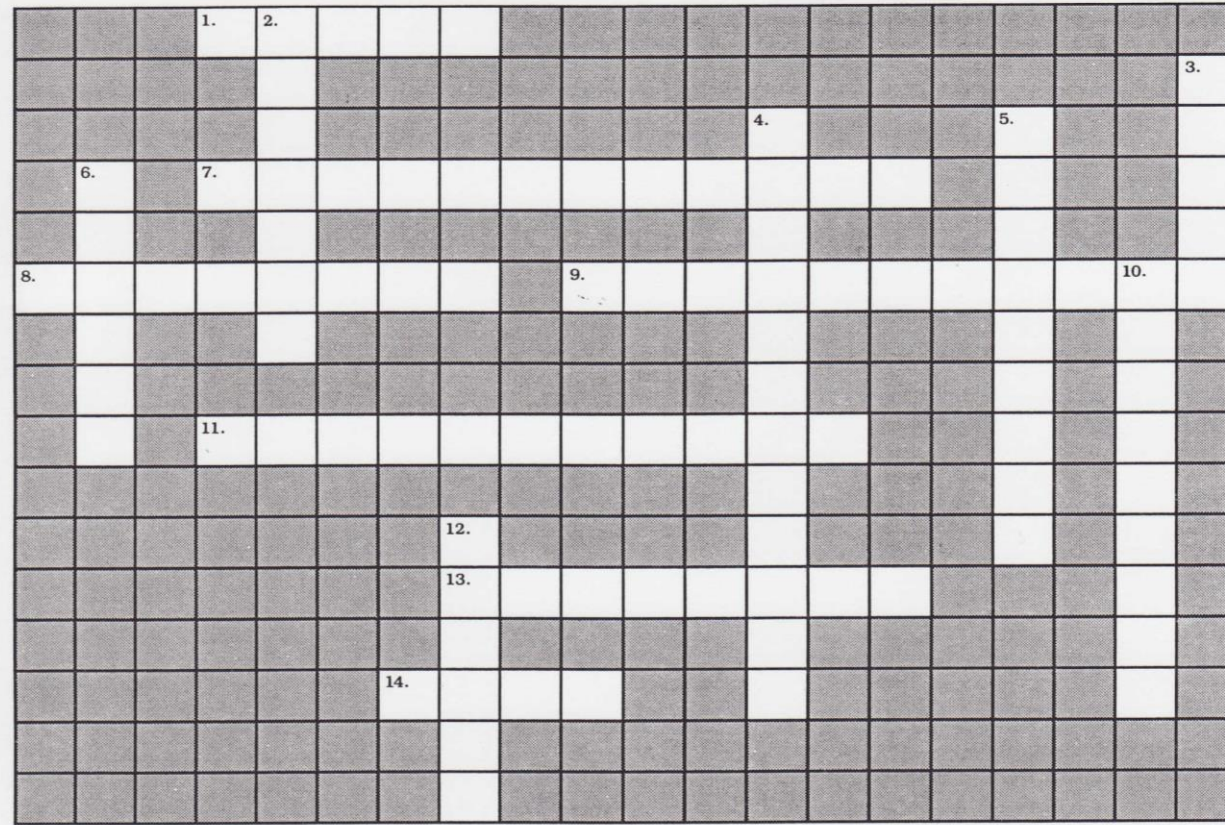
# *CIRCUMCISION*

Know what is normal.....



If there is **redness**, irritation, itching of the genitals, or an unusual discharge or odor - report it to a doctor for evaluation.

# Puberty Crossword Puzzle



## Word List: Puberty Crossword

Adolescence	Ejaculation	Menstruation	Puberty	Testicles
Cervix	Erection	Ovulation	Semen	Uterus
Circumcision	Genitals	Ovum	Sperm	

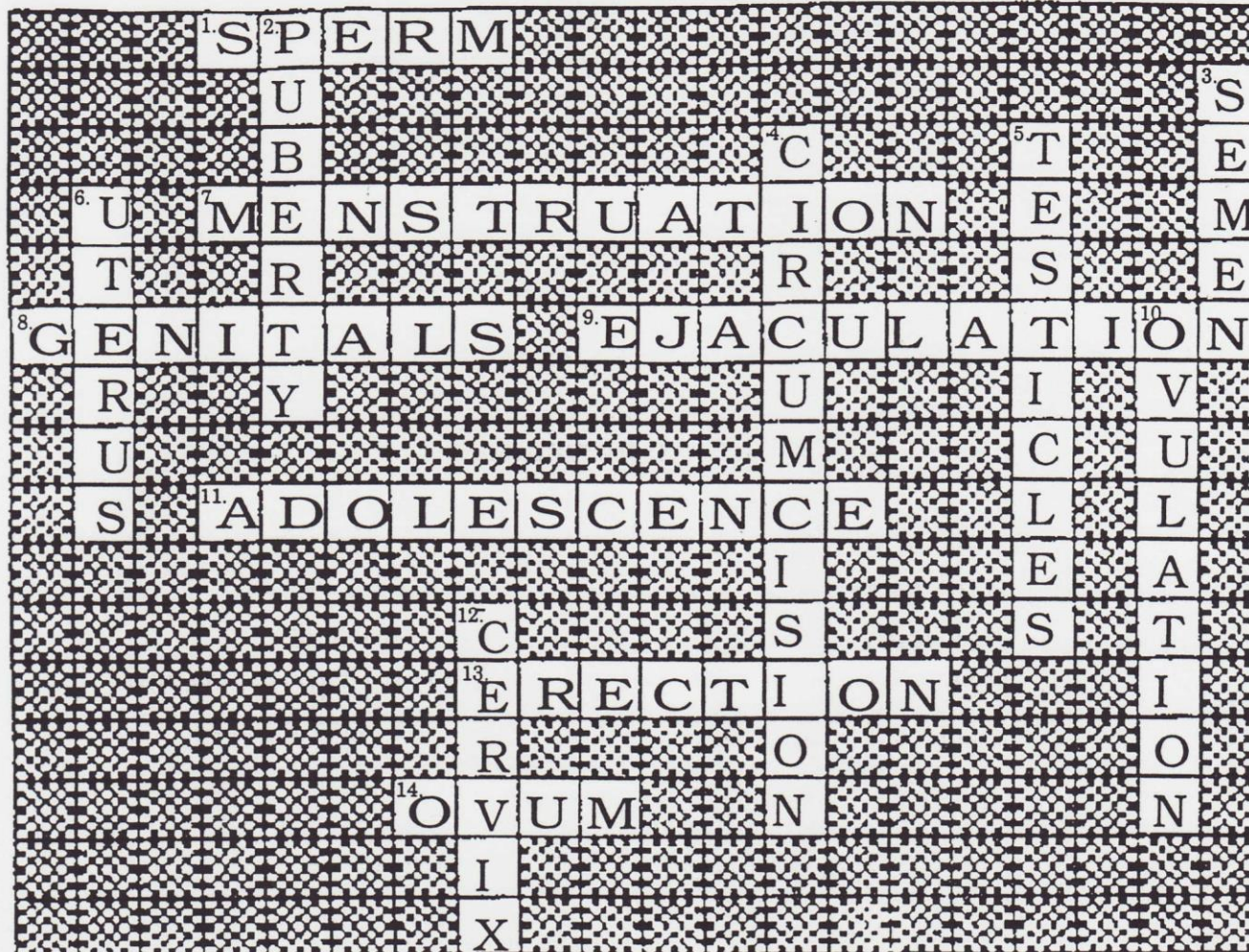
### Across Clues

1. Male sex cell
7. Normal monthly shedding of the lining the uterus
8. Reproductive organs located on the outside of the body
9. Forceful release of semen from the penis
11. Period of time between childhood and adulthood
13. Swelling and hardening of the penis causing it to enlarge and move to an upright position
14. Female sex cell

### Down Clues

2. Period of life during which the reproductive organs begin to function
3. A combination of prostate and seminal fluid which contains sperm
4. surgical removal of the foreskin from the penis
5. Male sex glands that produce sperm cells and the hormone testosterone
6. Hollow, muscular, pear-shaped organ in which a baby grows and develops
10. Release of a mature ovum (egg cell) from an ovary
12. Lower part of the uterus which opens into the





Word List: Puberty Crossword

## CAN YOU ANSWER THE QUESTIONS BELOW?

What is the period of life during which the reproductive organs begin to function ?

What are the reproductive organs located on the outside of the body called?

What are the names of the female and male sex glands?

# Answers

- Puberty
- Genitals
- Female sex glands = ovaries / Male sex glands = testicles