



## **Benton County School District**

### **Lawn Services Scope of Work**

Opening Date of Bidding Process: 7/30/25

Closing Date of Bidding Process: 8/13/25

Submit sealed bids to:

**BCSD Lawn Services Bids**

**Benton County School District**

**Attn: Lance McCallum**

**213 Court St.**

**Ashland, MS 38633**

Email questions to Bonnie Myers at [bmyers@benton.k12.ms.us](mailto:bmyers@benton.k12.ms.us)

Locations:

- A. North Location:
  - a. Ashland Elementary School
  - b. Ashland High School
  - c. BCSD Career and Technical Center
  - d. BCSD Central Office
- B. South Location:
  - a. Hickory Flat Attendance Center

Bidders will need to submit a separate bid for each location (A and B). See attached maps for details.

- 1. Mowing/trimming/edging/weed eating/blowing:
  - Grounds will be maintained on a weekly basis from March 1 to November 1 (30 visits).
  - During the dormant season we require 1 visit per month December--February (3 visits).
  - This will include mowing of all grass areas and weed eating all grass not able to be mowed.
  - This also included blowing off walkways, entrances, and sidewalks.
- 2. Weed control:

Applied through spraying chemicals, ant poison, and removal of dead plants as needed to keep an orderly appearance.

Includes all buildings, playgrounds, ditches, benches, walkways, parking lots, and other needed areas.



3. Mulching of flower beds:

Fresh mulch will be added twice (2x) per season. To include all current beds within schools and any future beds will be billable as needed.

4. Tree/ Limbs:

Any limbs which hinder parking or walkways will be trimmed to maintain walkways and vision of personnel. Minimum 10 feet height.

All campuses shall be trimmed minimum of 1 once (1) per year to control growth on trees.

5. Pruning:

Current shrubs and plants will be pruned semiannual or as shrubbery dictates the needs. This will include shaping of the plants/shrubbery.

Plants and shrubs will be replaced as needed to maintain appearance. Any dead shrubs/plants shall be removed and replaced as needed with approval from maintenance director for billing approval of such replacement.

6. Ant Poison:

Ant beds will be treated with poison as needed across all campuses.

Notes: Contractor will supply all necessary equipment and supplies. The employer reserves the right to dismiss the contract at any point if not satisfied with the quality of the work or if all areas are not properly serviced.





Ashland  
Elementary School

Lamar Rd

Lamar Rd

Lamar Rd

Lamar Rd

ACS



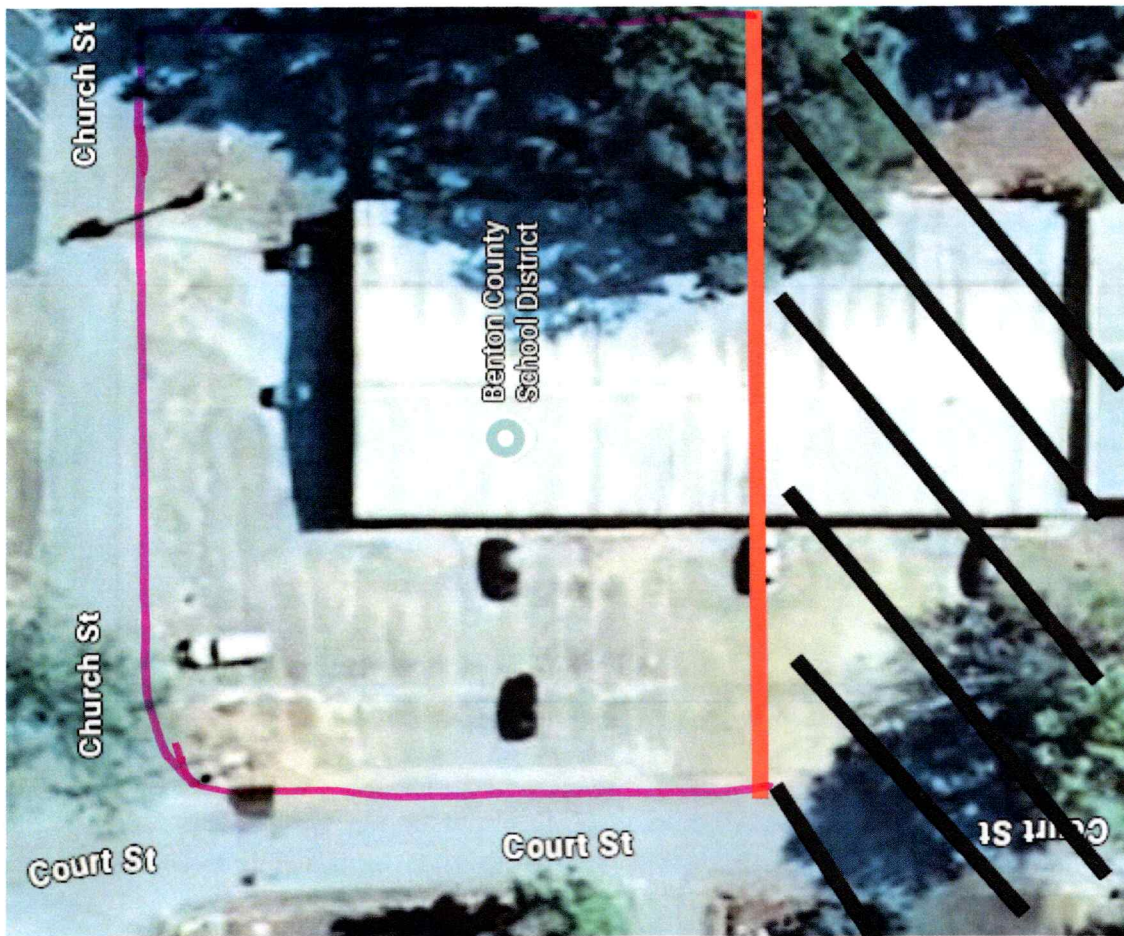


AHS





CTC



00





HFS







HFS

