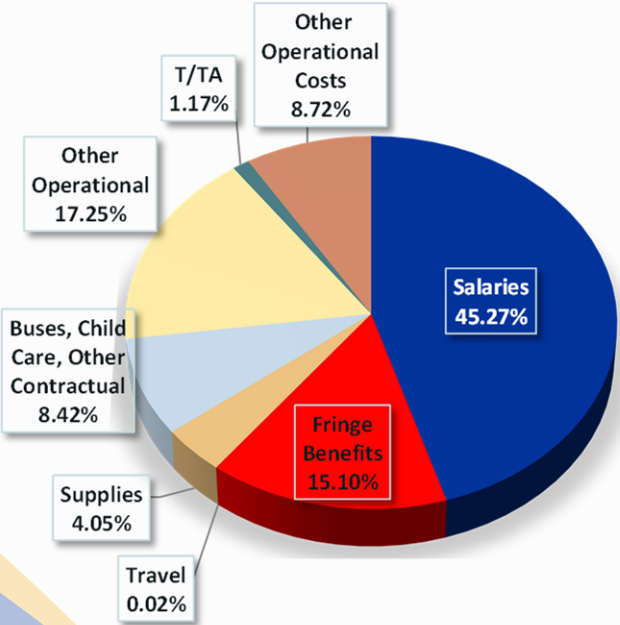


# Funding Sources for Gateway Head Start

ACF – Camden, Cumberland,...	\$14,737,298
ACF - Philadelphia	\$1,501,433
ACF – Atlantic and Cape May...	\$9,067,300
ACF-ARP/CRRSA	\$189,795
NJDOE	\$2,070,874
ACF - EHS-CCP	\$2,219,943
USDA	\$1,357,443
ACF – Germantown-Lehigh	\$1,226,620
US DOE	\$487,275
E-Rate	\$116,125
CDBG	\$41,500
Cumberland County Cultural...	\$3,800



# How Gateway Early Head Start and Head Start Utilizes its funding



# 2022 ANNUAL REPORT

## GATEWAY EARLY HEAD START AND HEAD START GATEWAY COMMUNITY ACTION PARTNERSHIP

The mission of Gateway Early Head Start and Head Start is to provide quality early childhood, health, and family partnership programs that promote self-sufficiency and strengthens the family.



## Gateway Community Action Partnership

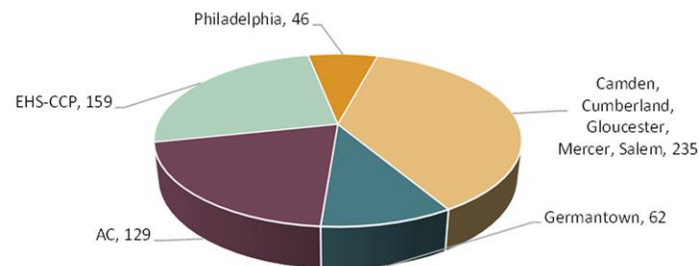
110 Cohansey Street  
Bridgeton, New Jersey 08302  
856-451-6330, 856-453-0803  
[www.gatewaycap.org](http://www.gatewaycap.org)

The mission of Gateway Community Action Partnership is to provide services that improve the quality of life and promote self-sufficiency.



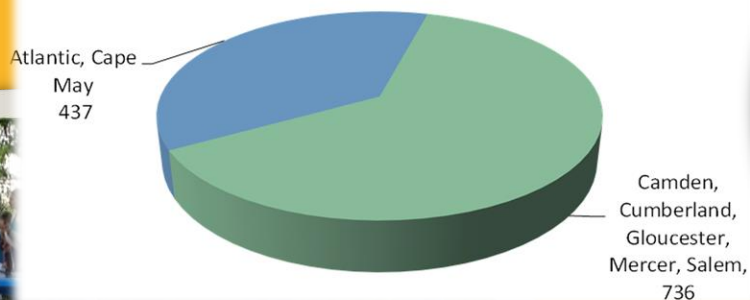


631 Infants, Toddlers and Pregnant Women were served in Early Head Start with a monthly average of 431 enrolled throughout the year. Serving approximately 3% of children living in the Gateway service area.



1,173 Preschool children served in Head Start with a monthly average of 892 enrolled throughout the year.

Serving approximately 10% of children living in the Gateway service area. Gateway coordinates with several of the school district preschools



Martini & Martini, Certified Public Accountants, has expressed an unmodified opinion (present fairly and are free from material misstatement) on the audited Financial Statements for Tri-County Community Action Agency, DBA Gateway CAP (a non-profit organization) which comprises Statement of Financial Position as of June 30, 2022 and 2021, and the related Statements of Activity, Functional Expenses, and Cash Flow for the years then ended in accordance with Generally Accepted Accounting Principle

Gateway is federally monitored to ensure it meets program governance, program operations, and as well financial and administrative standards. Gateway's last Aligned Monitoring Systems review follow-up resulted in full compliance with standards.



Community Giving



Mom and Me Breakfast



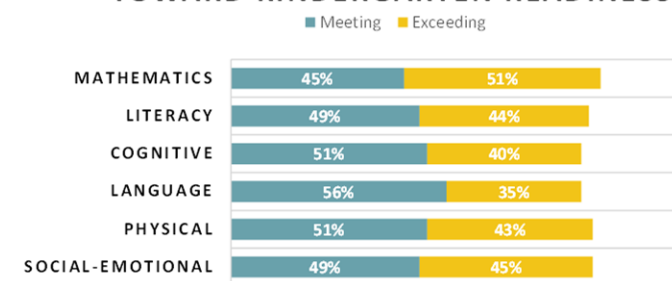
Family End-Of-Year Engagement Activity



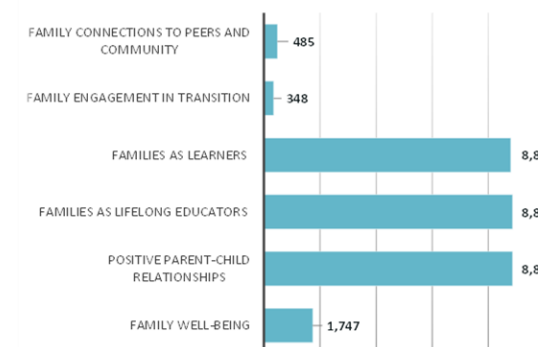
Parent Visits

Our son is moving up and on. Still, goodbyes are always difficult. So, we will just say, see you later and mean it. Thanks again, for helping to develop, mold, and shape our son. We've had the pleasure of seeing him grow from a nonverbal tot to a very dramatic little boy with an extensive vocabulary, expressive ready and comprehension skills. Kudo to of you for pouring into him so that he is well prepared to succeed in the next level of his education.  
We just cannot thank you enough.  
-LH, parent

## HEAD START CHILDREN AND THEIR PROGRESS TOWARD KINDERGARTEN READINESS



## Ready Rosie App Usage by Family Outcome Category



## Percentage of Early Head Start and Head Start Children with Access to Continuous Medical and Dental Care

