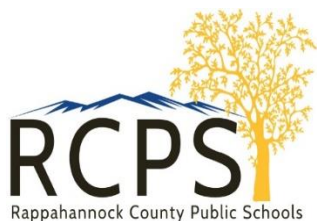


“Empowering Every Student to Reach Their Full Potential”



RCPS STUDENT CODE OF CONDUCT



RAPPAHANNOCK COUNTY PUBLIC SCHOOLS

School Board Office
6 Schoolhouse Rd.
Washington, VA 22747

Telephone (540) 227-0023
Fax (540) 987-8896

www.rappahannockschools.us

Dear School Family,

Welcome to the 2023-24 school year! We are proud to provide you with our *Student Code of Conduct*, which reflects input from students, teachers, and parents as well as suggested practices from the *Model Guidance for Positive, Preventive Code of Student Conduct Policy and Alternatives to Suspension (2021)*. The content of this document has been updated as required by policy in 2023 and not only reflects current Board policies and regulations, but also includes a stronger emphasis on intervention practices that address student conduct proactively. In addition, the leveled system of consequences has been adapted to ensure consistency while allowing for a full range of corrective actions that will most appropriately address disciplinary actions. Our Mental Health Innovators Team, which consists of school counselors, the school psychologist, the school social worker, and behavior specialists, will continue to assist with social-emotional learning, positive behavioral interventions, and counseling services.

Please review the updated *Student Code of Conduct* with your child/children during the first days of school to reinforce your support of safe and orderly conduct at school. School Board Policy requires that a parent or guardian complete, sign, and return an *Acknowledgement of the Student Code of Conduct* within the first week of school to document your awareness of student conduct expectations. This acknowledgement form can be found in your child's back to school folder.

We appreciate the opportunity to serve you and your child/children and look forward to a safe, productive and enjoyable year. Through the combined efforts of our dedicated School Board, talented teachers, highly qualified support staff, outstanding leadership team, and supportive parents and community, we will continue to shine as a small but mighty school division!

Sincerely,

Dr. Shannon Grimsley

RCPS Superintendent

RCPS STUDENT CODE OF CONDUCT

Preface

School Board Policy JFC requires that “the School Board shall biennially review the model student conduct code developed by the Board of Education to incorporate into policy a range of discipline options and alternatives to preserve a safe and non-disruptive environment for effective learning and teaching. This Student Code of Conduct was reviewed by representatives from a variety of stakeholder groups, including teachers, students, administrators, parents, special education, athletics, and mental health providers during the summer of 2023 to update the document in accordance with policy and the following vision and mission statements:

VISION STATEMENT

To empower every student to reach their full potential

MISSION STATEMENT

Through educational opportunities, the mission for RCPS will be to promote a culture of learning, a roadmap for excellence, and the passion and character that leads to each student's success.

Discipline Code Team Members, July 2021

Robin Bolt
Michelle Berta
Karen Sanborn
Crystal Smith
Erica Jennejahn
Jennifer Wissinger
Tiffany Montague
Lily Grimsley
Michael Tupper
Dr. Carol Johnson



RCPS STUDENT CODE OF CONDUCT

Statement of Purpose

(From School Board Policy JFC and the *Model Guidance for Positive, Preventive Code of Student Conduct Policy and Alternatives to Suspension, 2021*)

All students of Rappahannock County Public Schools have the right to an appropriate education in an environment that is free from disruption and danger and that is conducive to learning. We expect our students to display outstanding conduct so that all may learn. The purpose of this *Code of Student Conduct* is to state the behavioral expectations for a safe, productive learning environment that:

- Fosters social and physical safety;
- Provides support that enables students and staff to realize high behavioral expectations;
- Ensures effective academic instruction that provides opportunities for authentic instructional engagement with high rates of positive, task specific feedback to master rigorous academic standards; and
- Encourages and maintains respectful, trusting, and caring relationships throughout the school community (*Model Guidance for Positive, Preventive Code of Student Conduct Policy and Alternatives to Suspension, 2021 p. 19*)

Communication of Student Code of Conduct

(School Board Policy JFC)

1. Students, parents and staff will be given a copy of this Student Code of Conduct.
2. Students and parents will be asked to sign a statement indicating that they have received and read the Student Code of Conduct*
3. Students will be given an oral presentation of the Student Code of Conduct by school staff.
4. “Appropriate behavior will be taught, practiced across settings with feedback, reinforced, and taught again as indicated by the data” (*Model Guidance for Positive, Preventive Code of Student Conduct Policy and Alternatives to Suspension, 2021 p. 11*)

Student misconduct will be handled by staff as quickly and efficiently as circumstances allow. Staff members will monitor student conduct throughout the school building, on school grounds and during all school activities. Misconduct that requires an office referral will be followed up with a telephone call or face-to-face contact with a parent. A copy of the referral will also be sent home to the parent.

*By signing the statement of receipt, parents shall not be deemed to waive, but to expressly reserve, their rights protected by the constitutions or laws of the United States or the Commonwealth and that a parent shall have the right to express disagreement with a school's or school division's policies or decisions.



RCPS STUDENT CODE OF CONDUCT

Notice of the Requirements of Va. Code § 22.1-279.3. Parental responsibility and involvement requirements.

A. Each parent of a student enrolled in a public school has a duty to assist the school in enforcing the standards of student conduct and compulsory school attendance in order that education may be conducted in an atmosphere free of disruption and threat to persons or property, and supportive of individual rights.

B. A school board shall provide opportunities for parental and community involvement in every school in the school division.

C. Within one calendar month of the opening of school, each school board shall, simultaneously with any other materials customarily distributed at that time, send to the parents of each enrolled student (i) a notice of the requirements of this section; (ii) a copy of the school board's standards of student conduct; and (iii) a copy of the compulsory school attendance law. These materials shall include a notice to the parents that by signing the statement of receipt, parents shall not be deemed to waive, but to expressly reserve, their rights protected by the constitutions or laws of the United States or the Commonwealth and that a parent shall have the right to express disagreement with a school's or school division's policies or decisions.

Each parent of a student shall sign and return to the school in which the student is enrolled a statement acknowledging the receipt of the school board's standards of student conduct, the notice of the requirements of this section, and the compulsory school attendance law. Each school shall maintain records of such signed statements.

D. The school principal may request the student's parent or parents, if both parents have legal and physical custody of such student, to meet with the principal or his designee to review the school board's standards of student conduct and the parent's or parents' responsibility to participate with the school in disciplining the student and maintaining order, to ensure the student's compliance with compulsory school attendance law, and to discuss improvement of the child's behavior, school attendance, and educational progress.

E. In accordance with the due process procedures set forth in this article and the guidelines required by § [22.1-279.6](#), the school principal may notify the parents of any student who violates a school board policy or the compulsory school attendance requirements when such violation could result in the student's suspension or the filing of a court petition, whether or not the school administration has imposed such disciplinary action or filed a petition. The notice shall state (i) the date and particulars of the violation; (ii) the obligation of the parent to take actions to assist the school in improving the student's behavior and ensuring compulsory school attendance compliance; (iii) that, if the student is suspended, the parent may be required to accompany the student to meet with school officials; and (iv) that a petition with the juvenile and domestic relations court may be filed under certain circumstances to declare the student a child in need of supervision.

RCPS STUDENT CODE OF CONDUCT

F. No suspended student shall be admitted to the regular school program until such student and the parent have met with school officials to discuss improvement of the student's behavior, unless the school principal or designee determines that readmission, without parent conference, is appropriate for the student.

G. Upon the failure of a parent to comply with the provisions of this section, the school board may, by petition to the juvenile and domestic relations court, proceed against such parent for willful and unreasonable refusal to participate in efforts to improve the student's behavior or school attendance, as follows:

1. If the court finds that the parent has willfully and unreasonably failed to meet, pursuant to a request of the principal as set forth in subsection D of this section, to review the school board's standards of student conduct and the parent's responsibility to assist the school in disciplining the student and maintaining order, and to discuss improvement of the child's behavior and educational progress, it may order the parent to so meet; or

2. If the court finds that a parent has willfully and unreasonably failed to accompany a suspended student to meet with school officials pursuant to subsection F, or upon the student's receiving a second suspension or being expelled, it may order the student, parent, or both, to participate in such programs or such treatment, including, but not limited to, extended day programs, summer school, other educational programs and counseling, as the court deems appropriate to improve the student's behavior or school attendance. The order may also require participation in a parenting, counseling or a mentoring program, as appropriate or that the student, parent, or both, shall be subject to such conditions and limitations as the court deems appropriate for the supervision, care, and rehabilitation of the student or parent. In addition, the court may order the parent to pay a civil penalty not to exceed \$500.

H. The civil penalties established pursuant to this section shall be enforceable in the juvenile and domestic relations court in which the student's school is located and shall be paid into a fund maintained by the appropriate local governing body to support programs or treatments designed to improve the behavior of students as described in subdivision G 2. Upon the failure to pay the civil penalties imposed by this section, the attorney for the appropriate county, city, or town shall enforce the collection of such civil penalties.

I. All references in this section to the juvenile and domestic relations court shall be also deemed to mean any successor in interest of such court.



RCPS STUDENT CODE OF CONDUCT

Roles and Responsibilities

It is only through the cooperative effort of all parts of the school community- students, parents, teachers and staff, administrators, and members of the School Board - that a learning environment that is safe, orderly, and conducive to study can be maintained. The responsibilities of each of these segments of the school community are listed below.



Parents' Responsibilities:

1. Ensure your student attends school regularly as required by Virginia State law.
2. Guide your student from the earliest years to develop socially acceptable standards of behavior to exercise self-control and understand accountability for actions and learning.
3. Teach your student respect for school / classroom rules and the law, for the authority of the school and for the rights and property of others.
4. Discuss with your student the school's rules and the consequences for violating rules and sign a statement acknowledging receipt of this document annually.
5. Teach and help your student to practice strategies to solve problems in a positive and productive manner.
6. Participate in constructive two-way communication with the school. Contact teachers or the principal when questions arise.
7. Bring to the attention of school authorities any problems affecting, or potentially affecting, your student or other students in our school.
8. Participate in problem-solving meetings with school staff members when your student is displaying disruptive and/or harmful behaviors.
9. Help establish and maintain an atmosphere that generates mutual respect and dignity for all.



Students' Responsibilities:

1. Be aware of and comply with all school rules and regulations.
2. Demonstrate good citizenship by demonstrating cooperative behavior that recognizes and respects the rights, beliefs, views, and property of others, including the right to secure an education in a safe environment that is orderly and disciplined.
3. Follow and accept the leadership / direction of all staff members, even if a staff member is not your teacher.
4. Immediately tell an adult in the school if you become aware of something that may pose a threat to the emotional or physical well-being of those in the school or to school property.
5. Accept responsibilities for your own learning and actions.
6. Attend school regularly, arrive on time, and devote energies to learning.
7. Respect school property.
8. Request mediation if needed* (See below)

RCPS STUDENT CODE OF CONDUCT

MEDIATION

Mediation empowers people to become decision-makers in resolving their own conflicts. Mediation allows for interpersonal and school-based conflicts to be resolved in a cooperative setting. Mediators will be available to help students resolve conflicts while information remains confidential. If a student is in need of help to resolve a conflict with another person(s), mediation can be requested by asking the RCES or RCHS school counselor for assistance.



Student's Due Process Rights

When an alleged incident of misconduct has occurred, the following steps will be taken:

1. Whenever possible, the principal / designee will obtain a written statement of the facts in writing and a verbal description of the incident from the staff member / other party making the referral.
2. The principal / designee will meet with and inform the student of the alleged violation of rules.
3. The principal / designee will give students an opportunity to respond to the allegation and explain their side of the problem, including the names of witnesses the respondent may wish to present.
4. The principal / designee may interview other students or staff members for additional information or confirmation of the facts on the referral.
5. If there is sufficient evidence, the principal / designee will take appropriate disciplinary action.

***STUDENTS WITH DISABILITIES** (School Board Policy JGDA, JGDB)

Students with disabilities have the same due process rights that all students are entitled to under the Code of Virginia and the Rappahannock County Public Schools' disciplinary policies and procedures. A student with a disability who violates school rules may be removed from the student's current educational setting for up to 10 cumulative days in a school year to the extent removal would be applied to a student without a disability. If a student with disabilities is to be removed from the educational setting for a period of time that cumulatively exceeds 10 school days, special procedures and considerations will be applied.

APPEALS

The appeals process for the Rappahannock County Public Schools is as follows:

- Appeals of school level decisions made by personnel other than the Principal may be made to the Principal.
- Appeals of decisions made by a Principal or central office staff member or transportation supervisor may be made to the Superintendent.
- Appeals of decisions made by the Superintendent may be made to the School Board.
- Appeals of decisions made by the School Board may be made to the Circuit Court.

RCPS STUDENT CODE OF CONDUCT



Teachers' and Staff Members' Responsibilities:

1. Guide teaching and learning activities so students learn to think and reason, assume responsibility for their actions and respect the rights of others.
2. Help students develop disciplined and ethical habits. Participate in the development of educational programs and provide appropriate supervision to help prevent student misconduct.
3. Model expected behaviors at all times.
4. Teach and help students practice strategies to solve / prevent problems in a positive and productive manner.
5. Address violations of the conduct policy in a timely manner.
6. Keep parents well informed regarding student behavior and achievement.
7. Refer to counselor, administrator, or other school personnel, students whose behavior requires special attention.
8. Work cooperatively with students, parents and other school staff in solving student disciplinary problems.
9. Be consistent, firm and respectful in dealing with all students both in and out of the classroom.
10. Handle all information related to students in a confidential manner.
11. Reinforce positive student behavior.
12. Help establish and maintain an atmosphere that generates mutual respect and dignity for all. Treat everyone with courtesy and respect.
13. Participate in professional development activities that support positive and preventive approaches to student discipline.



Principals' Responsibilities:

1. Help the staff evaluate their procedures, attitudes and interactions in relation to exchanges with students.
2. Provide the opportunity for students and staff to approach the principal directly.
3. Be fair, firm, consistent and respectful in all decisions that affect students, parents and staff.
4. Maintain open communications between school and home. Contact the parent / guardian immediately when a student has violated school rules or if there are concerns regarding the student's welfare about which the parent should be aware.
5. Assume responsibility for the dissemination and enforcement of the school's discipline policy and ensure that all cases are resolved promptly using reasonable judgement that includes consideration of relevant circumstance when determining disciplinary action.
6. Comply with pertinent state and federal laws regarding student conduct, suspensions, students with disabilities, and students' rights.
7. Help establish and maintain an atmosphere that generates mutual respect and dignity for all.
8. Handle all information related to students in a confidential manner.
9. Develop student behavior support plans, to include student request for self-removal from class in order to regulate behavior.

RCPS STUDENT CODE OF CONDUCT

10. Notify the parent of any violence and substance abuse incident required to be reported to the superintendent and VA Board of Education.



Superintendent's Responsibilities:

1. Issue Standards of Student Conduct, and a list of possible corrective actions for violations.
2. Provide professional development for staff on evidence-based practices related to behavior and positive interventions.
3. Work with principals, law enforcement, social services and other agencies to make certain that the responsibilities of each are understood, to foster a collaborative working relationship, and make plans for cooperative working arrangements. Work with Principals to develop, publicize and carry out the rules and regulations for students.
4. Help establish and maintain an atmosphere that generates mutual respect and dignity for all.
5. Comply with pertinent state and federal laws regarding student conduct, suspensions, students with disabilities, and students' rights.
6. Appoint a Chairman of the Central Discipline Committee.
7. Handle all information related to students in a confidential manner.
8. Notify the parent/guardian of any disciplinary action taken in regard to any petition alleging that a student who is a juvenile has committed an act, wherever committed, which would be a crime if committed by an adult, or that such student who is an adult has committed a crime and is alleged to be within the jurisdiction of the court per Va. Code Section 16.1-260(G).



School Board's Responsibilities:

1. Adopt a clearly defined Student Code of Conduct for the schools and review at least biennially.
2. Help establish and maintain an atmosphere that generates mutual respect and dignity for all.
3. Hear discipline cases referred by the administration.
4. Comply with pertinent state and federal laws regarding student conduct, suspensions, students with disabilities, and students' rights.
5. Handle all information related to students in a confidential manner.



RCPS STUDENT CODE OF CONDUCT

Administrative Discretion

Students who violate this Code of Student Conduct will be treated consistently and fairly according to the recommended range of consequences listed here. *No document, however, can adequately anticipate or address all possible situations.* In light of this, principals reserve the right to alter the recommended consequence depending upon the severity of the offense, the age and maturity level of the individual student, and the student's conduct history. Consequences for very young students may be different from those stated below. Consequences of multiple infractions will be determined at the discretion of administrators. The Principal reserves the right to rule on any behavioral problem not specifically addressed herein. Administrators will endeavor to maintain the information provided to them in the complaint and investigation process in a confidential manner. The school system will endeavor to investigate all complaints as expeditiously and as professionally as possible. Where investigations confirm the allegations, appropriate corrective action will be taken.

LAW ENFORCEMENT INVOLVEMENT

SCHOOL RESOURCE OFFICER

The assistance of the School Resource Officer may be requested for discipline issues that involve the safety and welfare of persons or protection of property with emphasis on the following guidelines:

1. Law enforcement officers are not school disciplinarians.
2. The officer's presence does not reduce the responsibility of teachers and of administrators to enforce school rules and the school division's student code of conduct.
3. Classroom management rests with the teacher.
4. Disciplinary responses remain the responsibility of school administrators.
5. The focus of law enforcement involvement in conduct matters is properly centered on incidents that involve a violation of law (*Model Guidance for Positive, Preventive Code of Student Conduct Policy and Alternatives to Suspension, 2021 p. 33*)

REFERRAL TO LAW ENFORCEMENT

Violations of the Student Code of Conduct that are also violations of law will be reported to law enforcement personnel. Law enforcement personnel will work with the Commonwealth's Attorney to determine whether charges will be filed.

STUDENTS WHO HAVE BEEN CHARGED WITH FELONIES (School Board Policy JFC)

Students who are charged with offenses, wherever committed, that would be felonies if they were adults are subject to school disciplinary action.

STUDENTS WHO HAVE BEEN CONVICTED OR ADJUDICATED DELINQUENT

Students who have been convicted or adjudicated delinquent of an offense, regardless of where the offense occurs, listed in section 16.1-305.1 of the Code of Virginia (includes possession of weapons, violent acts, substance abuse, arson, robbery, and gang activity) may be suspended or expelled, if the courts notify the Superintendent of the adjudication.

~~~~~

## RCPS STUDENT CODE OF CONDUCT

### **LEVELED SYSTEMS OF DISCIPLINARY RESPONSES AND INSTRUCTIONAL INTERVENTIONS**

All stages of a system of intervention should include opportunities for learning acceptable replacement behaviors and access to interventions to address the underlying causes of behavior. Disciplinary responses should serve four key functions:

- preventing a negative behavior from being rewarded;
- preventing a problem behavior from escalating;
- preventing a problem behavior from significantly interrupting instruction; and
- preventing physical and/or social-emotional harm to others. (*Model Guidance Document*, 2021, p. 50).

In addition, any student involved in a reportable drug or violent incident, as described in Policy CLA Reporting Acts of Violence and Substance Abuse, participates in prevention and intervention activities deemed appropriate by the superintendent or superintendent's designee. Further, any student who has been found to be in possession of or under the influence of drugs or alcohol on school property or at a school sponsored activity may be required to (1) undergo evaluation for drug or alcohol abuse and (2) participate in a drug and/or alcohol treatment program if recommended by the evaluator and if the parent consents.



This Policy and the Standards of Student Conduct apply to all Rappahannock County Public School students. They are enforced when the student's conduct occurs when the student is

- On school property.
- Traveling to school or from school.
- Traveling to, at, and from bus stops.
- In School Board vehicles.
- In attendance at any school-sponsored activity.
- Off school property if the conduct disrupts the learning environment.

## RCPS STUDENT CODE OF CONDUCT

### **Disciplinary Responses: Criteria, Procedures, and Processes**

**Corrective Actions Imposed by Teachers (With or Without an Office Referral)** - Staff members may impose appropriate minor consequences (withholding rewards, loss of privileges, assignment of tasks, calling the parent, etc.) for the violation of classroom and school rules. The following consequences may also be imposed by staff members with or without a referral to a principal:

#### **Level 1:**

- Restorative Practices utilizing intervention activities such as peer meetings, directed community services, research projects, mediation, and restitution
  - Counseling (in class, guidance)
  - Admonition, reprimand (warning)
    - Parental conferences
- Referral to student assistance services (school counselor, attendance officer)
  - Removal from class\*
  - Student Behavior Contract/Plan
  - Initiation of Child Study Process
    - Confiscation

**Corrective Actions Imposed by Principal Following an Office Referral-** In addition to all Level 1 corrective actions, principals may also impose the following consequences upon receiving or writing a discipline referral:

#### **Level 2:**

- Detention, including before/after school\*
- Loss of privileges, including access to the RCPS computer system and after school activities (Loss of After School Privileges - LAP)\*
- Suspension from school-sponsored activities/events before, during, or after the regular school day
  - Modification of student class schedule
    - In school suspension (ISS)\*
- Referral to in-school intervention, mediation, or community services programs
  - Tasks or restrictions assigned by the principal/designee
    - Out of school suspension (OSS)\*
  - Loss of driving privileges to and from school
    - Alternative Education

#### **Level 3:**

- Placement in Alternative Education program/school based instruction program\*
  - Referral to community-based services
    - Long Term Suspension
  - Referral to Discipline Committee\*
  - Recommendation for Expulsion\*
- Referral to Rappahannock County School Board\*
  - Referral to Law Enforcement\*
- Required intervention by mental health professionals
  - Evaluation for drug/alcohol abuse
- Participation in a drug, alcohol, or violence intervention, prevention or treatment program

*\*Denotes action with a more detailed definition on pp. 11-12*

## RCPS STUDENT CODE OF CONDUCT

### **\*Definitions for Selected Corrective Actions from P. 10**

#### *Removal from Class-*

The student may be removed from regular class due to disruptive behavior after two incident reports have been filed with school administrators and communicated to the parents. The student may be sent to another classroom or a designated safe space to complete classwork (School Board Policy JFCA).

#### *Detention-*

The student is excluded from a short-term, regular class activity (lunch, recess, etc.) and will eat lunch or complete assigned work in a designated safe space or a classroom under staff supervision. Detention may be assigned to a student for a specific period of time for one day or several days, such as lunch detention for 3 days.

#### *Before/after school detention-*

The student is required to come to school early or stay after school under staff supervision for a designated period of time and is expected to complete work assigned by teacher(s). Parents will be notified in advance of the detention date. Transportation to school for early detention and home for after school detention will be the responsibility of the parent.

#### *In-school suspension (ISS)-*

The student is required to remain in the school's ISS/designated safe space room and is expected to complete all assigned work. ISS may be assigned to a student for a specific period of time ranging from a portion of a day to several days. While in ISS, the student will receive help, as needed, with assignments. If the student has difficulty regulating behavior while there, additional time in ISS or out-of-school suspension may be issued. This will be determined based on the seriousness of the disruption and the age and maturity of the student.

#### *Out-of-school suspension (OSS)-*

The student is not allowed to return to school and is prohibited from being on school grounds for a specific period of time to include a short-term suspension for not more than ten school days or a long-term suspension of more than 10 days. The student is expected to complete all work missed while out of school. Students in preschool through grade three shall not be suspended for more than three school days or expelled from attendance unless aggravating circumstances\*\* exist. A long-term suspension shall not exceed 45 school days unless aggravating circumstances\*\* exist. Principals will follow applicable state and federal regulations when considering OSS for students with disabilities (School Board Policy JGD/JGE)

\*\*Aggravating circumstances is defined in VA Code §22.1-277 and §22.1-277.05 as:

1. Misconduct which caused serious harm (including but not limited to physical, emotional, or psychological harm) to another person(s) or posed a credible threat of serious harms to another person(s), as determined by a threat assessment; or
2. The student's presence in the school poses an ongoing and unreasonable risk to the safety of the school, students, staff, or others in the school; or
3. The student engaged in a serious offense that is persistent (repeated similar behaviors are documented on the student's disciplinary record), and unresponsive to targeted interventions as documented through an established intervention process

## RCPS STUDENT CODE OF CONDUCT

### *Loss of afterschool privileges (LAP)-*

Whenever students seriously violate school rules they face a loss of the right to attend or participate in school-sponsored events, including any and all sports activities that occur after school regardless of location. In certain cases, the administration may also restrict participation in school-sponsored field trips and other extensions of classroom work, such as concerts, plays, etc.

### *Placement in alternative education-*

The student is removed from the regular class and receives educational services in the behavior management room for a specific period of time, including night school, adult education, or another education program designed to offer instruction off campus to students for whom the regular program of instruction may be inappropriate. This consequence may be imposed after frequent and repeated disruptions to the learning environment and/or following a severe infraction. A plan will be developed for the student before placement in alternative education. Timing may dictate that the plan be agreed upon orally before it is put on paper. The plan should include input from administration, teachers and parents. It will include evidence of attempts to correct negative student behaviors and a timeline for the student's removal from the alternative setting (School Board Policy JGD/JGE).

### *Referral to Rappahannock County Public Schools' Discipline Committee-*

The student is suspended from school and must appear with parents/guardians before a committee of administrators (may include the School Resource Officer). This consequence may be imposed for frequent and repeated disruptions to the learning environment and/or following a severe infraction, such as those involving weapons, drugs or violence. Possible outcomes from this hearing include immediate return to school, additional out-of-school suspension and referral to the Rappahannock County School Board. The administration will follow applicable state and federal regulations when considering OSS for students with disabilities.

### *Referral to Rappahannock County School Board-*

The student is suspended from school and must appear with parents/guardians before members of the School Board. This consequence may be imposed for frequent and repeated disruptions to the learning environment and/or following a severe infraction, such as those involving weapons, drugs or violence. Possible outcomes from this hearing include immediate return to school, long-term suspension and expulsion. The School Board will follow applicable state and federal regulations when considering OSS for students with disabilities.

### *Expulsion-*

Any disciplinary action imposed by a school board or a committee thereof, as provided in school board policy, whereby a student is not permitted to attend school within the school division and is ineligible for readmission for 365 calendar days after the date of the expulsion (School Board Policy JGD/JGE)

### *Referral to Rappahannock County Law Enforcement-*

The student is suspended from school and referred to law enforcement officials. The student may face criminal charges in addition to school consequences imposed by building principals, the school division discipline committee and/or the School Board.

**NOTE: Whether a student acted in self-defense is considered when the student's conduct is evaluated for disciplinary action.**



## RCPS STUDENT CODE OF CONDUCT

### *Standards of Student Conduct*

Following are standards of student conduct established by the School Board for all students. The corrective actions for any act are determined on the basis of the facts presented in each situation in the reasonable discretion of the Board, its designated committees and other appropriate school officials.

[illegible]

## RCPS STUDENT CODE OF CONDUCT

| <u><b>Specific Infractions:</b></u>                                                                                                                                                                                                                                                                                                                                                                                                                                                                                                                                                                                                                                                                                                                                                                                                                                                                                                                                                                               | <u><b>Corrective Actions (See p. 13):</b></u>                    |
|-------------------------------------------------------------------------------------------------------------------------------------------------------------------------------------------------------------------------------------------------------------------------------------------------------------------------------------------------------------------------------------------------------------------------------------------------------------------------------------------------------------------------------------------------------------------------------------------------------------------------------------------------------------------------------------------------------------------------------------------------------------------------------------------------------------------------------------------------------------------------------------------------------------------------------------------------------------------------------------------------------------------|------------------------------------------------------------------|
| <p><b>ASSAULT AND BATTERY OR THREAT TOWARDS SCHOOL EMPLOYEE:</b> A student shall not assault, commit battery, or threaten a school employee. This includes hitting, kicking, spitting on, biting, throwing an object or any other manner of physically assaulting an adult at school. This also includes cursing, the use of vulgar language (spoken or written) and vulgar gestures directed toward school employees. In all cases law enforcement will be notified to determine whether charges will be filed.</p>                                                                                                                                                                                                                                                                                                                                                                                                                                                                                              | <p><b>RCES/RCHS: Level 2, 3</b></p>                              |
| <p><b>ATTENDANCE: TRUANCY/SKIPPING – (From Policy JED)</b><br/>Students may not miss school or scheduled classes without the parent's knowledge or permission. The school will contact parent/guardian when no note or phone contact has been made by the parent. If a student who is under 18 years of age has 10 or more unexcused absences from school on consecutive school days, the principal may notify the Juvenile and Domestic Relations court, which may take action to suspend the student's driver's license.</p>                                                                                                                                                                                                                                                                                                                                                                                                                                                                                    | <p><b>RCES/RCHS: Level 1, 2, with exception of ISS/OSS</b></p>   |
| <p><b>ATTENDANCE: CHRONIC ABSENTEEISM-</b> Students shall not be absent for excessive numbers of days (5 or more days in a semester) or miss the same individual class(es) 5 OR MORE TIMES) with the knowledge of the parent. Parent conferences will be required for students with 5 or more class absences with the division Attendance Team.<br/>Note: Must be present by the first Tardy Bell to participate in / be spectator at school events.<br/>Note: Make-up work must be completed within one week.</p>                                                                                                                                                                                                                                                                                                                                                                                                                                                                                                | <p><b>RCES/RCHS: Level 1, 2, 3 with exception of ISS/OSS</b></p> |
| <p><b>BOMB THREATS:</b> Students shall not engage in any illegal conduct involving firebombs, explosive, or incendiary materials or devices or hoax explosive devices or chemical bombs as defined in the Code of Virginia. Additionally, students shall not make any threats or false threats to bomb schools, students, personnel, or school property.</p>                                                                                                                                                                                                                                                                                                                                                                                                                                                                                                                                                                                                                                                      | <p><b>RCES/RCHS: Level 3</b></p>                                 |
| <p><b>BULLYING:</b> Students shall not bully others either in person or through any communication technology. "Bullying" means any aggressive and unwanted behavior that is intended to harm, intimidate, or humiliate the victim; involves a real or perceived power imbalance between the aggressor or aggressors and victim; and is repeated over time or causes severe emotional trauma. "Bullying" does not include ordinary teasing, horseplay, argument or peer conflict. "Bullying" can take the form of physical threats, demeaning others, persistent name-calling, threatening aggressive behavior and other tactics intended to intimidate another individual. In a school environment, these actions may lead to distraction in class, fear to move about the school or even fear of attending school. The principal will notify the parent of any student involved in an alleged incident of bullying of the status of any investigation within five school days of the allegation of bullying.</p> | <p><b>RCES/RCHS: Level 2, 3</b></p>                              |
| <p><b>BUS-RELATED OFFENSES:</b> Per Policy JFCC, students are expected to comply with the Rules for Bus Riders as listed in Appendix A).</p>                                                                                                                                                                                                                                                                                                                                                                                                                                                                                                                                                                                                                                                                                                                                                                                                                                                                      | <p><b>See Bus Discipline Procedures, Appendix A</b></p>          |
| <p><b>CELL PHONE/PERSONAL ELECTRONIC DEVICES POSSESSION:</b> All electronic devices must remain out of sight and turned off during academic classes (see next page).</p>                                                                                                                                                                                                                                                                                                                                                                                                                                                                                                                                                                                                                                                                                                                                                                                                                                          | <p><b>RCES/RCHS: Level 1, 2, 3</b></p>                           |

| <b><u>Specific Infractions:</u></b>                                                                                                                                                                                                                                                                                                                                                                                                                                                                                                                                                                                                                                                                                                                                                                                                                                                                                                                                                                                                                                                                                                                        | <b><u>Corrective Actions (See p. 13):</u></b>              |
|------------------------------------------------------------------------------------------------------------------------------------------------------------------------------------------------------------------------------------------------------------------------------------------------------------------------------------------------------------------------------------------------------------------------------------------------------------------------------------------------------------------------------------------------------------------------------------------------------------------------------------------------------------------------------------------------------------------------------------------------------------------------------------------------------------------------------------------------------------------------------------------------------------------------------------------------------------------------------------------------------------------------------------------------------------------------------------------------------------------------------------------------------------|------------------------------------------------------------|
| <p><b>CELL PHONE/PERSONAL ELECTRONIC DEVICES POSSESSION</b> (continued)</p> <p>Students are not to use cell phones during the academic school day, including calling their parents. School phones in the main office will continue to be available for students to call parents for legitimate reasons.</p> <p><b>Note:</b> Use of personal electronic devices to record (video and/or audio) self or others is strictly prohibited. Violations will result in severe penalties up to suspension and court action.</p> <p><b>*Note:</b> RCHS students in grades 8-12 may use their phones before school (8:05 to 8:20), during extended breakfast, lunch, during class changes, and after the fourth period bell. This privilege may be rescinded due to students' misuse of cell phones at the discretion of the principal.</p>                                                                                                                                                                                                                                                                                                                           |                                                            |
| <p><b>CHEATING/PLAGIARISM:</b> Conspiring to obtain class assignments or test answers fraudulently from another source and/or representing the work as one's own is prohibited. This includes, but is not limited to:</p> <ul style="list-style-type: none"> <li>-Copying from another student's work.</li> <li>-Copying information from another source without providing documentation of source.</li> <li>- Giving of answers to other students.</li> <li>-Using unauthorized help sheets and the like</li> <li>-Illegally obtaining tests/answers to tests in advance</li> <li>-Other forms of unauthorized collusion.</li> </ul>                                                                                                                                                                                                                                                                                                                                                                                                                                                                                                                      | <p><b>RCES: Level 1, 2</b><br/><b>RCHS: Level 2, 3</b></p> |
| <p><b>CYBER BULLYING:</b> Cyber bullying is a form of bullying that involves the transmission, receipt, or display of electronic messages and/or images. Cyber bullying using the RCPS Internet, RCPS computers, or other wireless communication devices in schools, on school property, or at school related activities will not be tolerated.</p>                                                                                                                                                                                                                                                                                                                                                                                                                                                                                                                                                                                                                                                                                                                                                                                                        | <p><b>RCES/RCHS: Level 2, 3</b></p>                        |
| <p><b>DISOBEDIENCE/INSUBORDINATION DIRECTED TOWARD SCHOOL EMPLOYEE:</b> Students shall not defy the instructions of school staff. This includes disobeying a request or direction aimed toward a student or the class in general by a staff member, lying, "talking back", flagrant acts of rudeness and disobedience, disrespectful language, refusal to report to the office upon direction, and other acts of defiance on the part of a student.</p>                                                                                                                                                                                                                                                                                                                                                                                                                                                                                                                                                                                                                                                                                                    | <p><b>RCES/RCHS: Level 1, 2</b></p>                        |
| <p><b>DISRUPTIVE BEHAVIOR:</b> Students shall not interfere with the learning environment through disruption, which is behavior that interrupts classroom or school activities in hallways, cafeteria, library, gym, assembly, or other areas during the student's time on school grounds, thus interfering with the educational or social environment. This includes, but is not limited to, loud, boisterous behavior; use of profane language; dress that disrupts the educational process; and possession of objects that disrupt school activities. Any objects used to disrupt school activities may be confiscated and turned over the parent/guardian in addition to the consequences listed in this section.</p> <p><b>Note:</b> Students whose dress disrupts the educational environment may be asked to wear something over clothing worn to school or a parent may be called to bring a change of clothing. Such incidents will be handled as discreetly as possible and a warning will be given to the student. Subsequent incidents will be handled according to the offenses listed on the right (See School Board Regulation JFC-R2).</p> | <p><b>RCES/RCHS: Level 1, 2</b></p>                        |

## RCPS STUDENT CODE OF CONDUCT

| <u><b>Specific Infractions:</b></u>                                                                                                                                                                                                                                                                                                                                                                                                                                                                                                                                                                                                                                                                                                                                                                                                                                  | <u><b>Corrective Actions (See p. 13):</b></u>              |
|----------------------------------------------------------------------------------------------------------------------------------------------------------------------------------------------------------------------------------------------------------------------------------------------------------------------------------------------------------------------------------------------------------------------------------------------------------------------------------------------------------------------------------------------------------------------------------------------------------------------------------------------------------------------------------------------------------------------------------------------------------------------------------------------------------------------------------------------------------------------|------------------------------------------------------------|
| <p><b>EXTORTION:</b> No student may engage in extortion, which is the act or practice of obtaining money or other property from a person by force, threat or ingenuity.</p>                                                                                                                                                                                                                                                                                                                                                                                                                                                                                                                                                                                                                                                                                          | <p><b>RCES: Level 1, 2</b><br/><b>RCHS: Level 2, 3</b></p> |
| <p><b>FIGHTING</b>–Fighting (a mutual encounter between two or more students who engage in physical contact, with or without injury) is prohibited. Because physical violence in the school is a serious threat to the learning environment, fighting will not be tolerated. School officials will investigate the incident and discipline will be based on each student's role before and during the fight.</p>                                                                                                                                                                                                                                                                                                                                                                                                                                                     | <p><b>RCES/RCHS: Level 2, 3</b></p>                        |
| <p><b>FORGERY OR ALTERATION OF A DOCUMENT:</b> The unauthorized signing of another person's name (student, teacher, parent, etc.) on a school note or other document is prohibited. This includes but is not limited to the imitation or fabrication of another's signature on written work.</p>                                                                                                                                                                                                                                                                                                                                                                                                                                                                                                                                                                     | <p><b>RCES/RCHS: Level 2</b></p>                           |
| <p><b>GAMBLING:</b> A student may not bet money or other things of value. This also includes knowingly playing or participating in any game involving such a bet. School-approved fund raising is excluded.</p>                                                                                                                                                                                                                                                                                                                                                                                                                                                                                                                                                                                                                                                      | <p><b>RCES/RCHS: Level 1, 2</b></p>                        |
| <p><b>GANG ACTIVITY OR ASSOCIATION</b> (<i>From Rappahannock County School Board Policy JFCE</i>): Students shall not engage in gang activity on school grounds, on school buses or at any school sponsored activity. A gang is defined as any group of two or more persons whose purpose includes: commission of illegal acts, participation in activities that threaten the safety of persons or property, disruption of school activities, or creation of an atmosphere of fear and intimidation. Gang activity is defined in the policy and includes such things as the wearing of clothing or other items that indicate affiliation with a gang and certain actions that are evidence of gang membership. Included also are bullying, harassment, intimidation, degradation and other activities which are likely to cause bodily or mental harm to others.</p> | <p><b>RCES/RCHS: Level 2, 3</b></p>                        |
| <p><b>HARASSMENT:</b> (<i>From School Board Policy JFHA</i>) When a person's words, actions, gestures, or symbols interfere with another's ability to learn by offending, intimidating, threatening, or persecuting others, that behavior is considered harassment and is prohibited conduct. This includes, but is not limited to, name calling, obscenities and emotional / verbal abuse</p>                                                                                                                                                                                                                                                                                                                                                                                                                                                                       | <p><b>RCES: Level 2, 3</b><br/><b>RCHS: Level 3</b></p>    |
| <p><b>HAZING:</b> Hazing is forbidden. Hazing is the mental or physical abuse of another as part of an initiation to a club, team, or organization. Virginia law imposes a Class I misdemeanor penalty for violations, i.e., either or both confinement in jail for not more than 12 months and a fine of not more than \$2,500. The principal of any school at which hazing causes bodily injury shall report the hazing to the local Commonwealth Attorney.</p>                                                                                                                                                                                                                                                                                                                                                                                                    | <p><b>RCES/RCHS: Level 3</b></p>                           |
| <p><b>INTENTIONAL INJURY OF OTHERS:</b> Students are prohibited from intentionally injuring others.</p>                                                                                                                                                                                                                                                                                                                                                                                                                                                                                                                                                                                                                                                                                                                                                              | <p><b>RCES/RCHS: Level 2,3</b></p>                         |
| <p><b>LATE TO CLASS OR HOMEROOM – Grades 6-12:</b><br/>Student is not inside class when the bell rings and has no pass. Upon the 2nd tardy the teacher will warn the student that the next tardy will result in a discipline referral.</p>                                                                                                                                                                                                                                                                                                                                                                                                                                                                                                                                                                                                                           | <p><b>RCES/RCHS: Level 1, 2</b></p>                        |

## RCPS STUDENT CODE OF CONDUCT

| <b><u>Specific Infractions:</u></b>                                                                                                                                                                                                                                                                                                                                                                                                                                                                                                                                                                        | <b><u>Corrective Actions (See p. 13):</u></b>                  |
|------------------------------------------------------------------------------------------------------------------------------------------------------------------------------------------------------------------------------------------------------------------------------------------------------------------------------------------------------------------------------------------------------------------------------------------------------------------------------------------------------------------------------------------------------------------------------------------------------------|----------------------------------------------------------------|
| <p><b>MISUSE OF COMPUTERS / OTHER ELECTRONIC DEVICES</b> <i>(From School Board Policy IIBEA)</i><br/> Student misuse of school computers or other electronic devices, <u>school owned or personal</u>, to try to access inappropriate websites, harm others and / or violate other provisions of the Code of Student Conduct or the Acceptable Computer Use Policy.</p>                                                                                                                                                                                                                                    | <p><b>RCES/RCHS: Level 1, 2, 3</b></p>                         |
| <p><b>NOT FOLLOWING ESTABLISHED RULES AND PROCEDURES:</b> Students shall follow all rules in the student handbook. This includes, but is not limited to, pass procedures, restricted areas, changing lockers or giving combinations to others, open containers, electronic devices, water guns/balloons, loitering or staying in a bathroom, going in an area without permission or supervision, unprepared for class (book paper, pen/pencil, assignment), throwing food, running in the hall, skateboarding, littering, inappropriate dress, not following general procedures, classroom rules, etc.</p> | <p><b>RCES/RCHS: Level 1, 2</b></p>                            |
| <p><b>NOT REPORTING FOR DETENTION</b> - <u>Grades 8-12</u><br/> Students are required to show up when requested. A student's detention can be postponed with a note, phone call, or visit from the parent/guardian.</p>                                                                                                                                                                                                                                                                                                                                                                                    | <p><b>RCHS: Level 2</b></p>                                    |
| <p><b>PUBLIC DISPLAY OF AFFECTION</b> - <u>Grades 8-12</u><br/> Excessive public displays of affection are not permitted on school property. Kissing, hugging, and intimate body contact such as lap sitting, groping, etc. are unacceptable in school.</p>                                                                                                                                                                                                                                                                                                                                                | <p><b>RCHS: Level 1, 2</b></p>                                 |
| <p><b>PRANKS:</b> Pranks are tricks or practical jokes that can cause harm to an individual or property or disrupt the learning environment and are not allowed. Such actions will be addressed according to the severity and the frequency of the behavior.</p>                                                                                                                                                                                                                                                                                                                                           | <p><b>RCES/RCHS: Level 1,2</b></p>                             |
| <p><b>PROFANITY (SPOKEN, WRITTEN, OR ON CLOTHING) /UNACCEPTABLE GESTURES:</b> Cursing, the use of vulgar language (spoken or written) and vulgar gestures towards others is prohibited. Also included are profane or vulgar photographs, drawings, explicitly written materials and clothing, and any personal possession displaying any of these.</p>                                                                                                                                                                                                                                                     | <p><b>RCES: Level 1, 2</b><br/> <b>RCHS: Level 1, 2, 3</b></p> |
| <p><b>RECKLESS ENDANGERMENT/SAFETY VIOLATION:</b> Acts or threats that could cause bodily harm to the student or others are prohibited. This includes, but is not limited to arson, pulling of fire alarms, throwing snowballs, laser pointers and / or other objects and other unsafe acts on school grounds such as bomb threats, tampering with equipment, possessing matches, lighters, incendiary devices, etc.</p>                                                                                                                                                                                   | <p><b>RCES/RCHS: Level 2,3</b></p>                             |
| <p><b>SELLING</b> - <u>Grades K-12</u><br/> Students are allowed to sell only school-approved fund raising items at school. "School" includes bus stops and school vehicles.</p>                                                                                                                                                                                                                                                                                                                                                                                                                           | <p><b>RCES/RCHS: Level 1, 2</b></p>                            |

## RCPS STUDENT CODE OF CONDUCT

| <u><b>Specific Infractions:</b></u>                                                                                                                                                                                                                                                                                                                                                                                                                                                                                                                                                         | <u><b>Corrective Actions (See p. 13):</b></u>                 |
|---------------------------------------------------------------------------------------------------------------------------------------------------------------------------------------------------------------------------------------------------------------------------------------------------------------------------------------------------------------------------------------------------------------------------------------------------------------------------------------------------------------------------------------------------------------------------------------------|---------------------------------------------------------------|
| <p><b>SEXUAL HARRASSMENT:</b> <i>(School Board Policy JFHA)</i> Students shall not engage in sexual harassment, which is any illegal form of treatment based on gender or sexual orientation. This includes, but is not limited to, unwelcome sexual advances, requests for sexual favors and any other form of verbal, written, or physical conduct of a sexual nature that results in harassment of and/or interference with a person's performance in school. Such conduct may result in disciplinary action up to and including dismissal or suspension in accordance with the law.</p> | <p><b>RCES/RCHS: Level 2,3</b></p>                            |
| <p><b>STALKING:</b> Repeatedly harassing or otherwise intruding upon a person's privacy in a manner that causes fear of serious harm, commonly exemplified by acts such as following a person, is prohibited.</p>                                                                                                                                                                                                                                                                                                                                                                           | <p><b>RCES/RCHS: Level 2,3</b></p>                            |
| <p><b>THEFT/DESTRUCTION OF OTHERS' PROPERTY:</b> Students shall not knowingly remove or possess the property of another person without that person's permission or willfully destroy the property of others. The value of the property will be taken into consideration when determining the consequence in cases requiring restitution.<br/>Note: Violations may be reported to law enforcement.</p>                                                                                                                                                                                       | <p><b>RCES: Level 1, 2, 3</b><br/><b>RCHS: Level 2, 3</b></p> |
| <p><b>THREATS:</b> Students shall not verbally or in writing make a statement that suggests intent to do bodily harm to another person. The specifics/severity of the threat will be taken into account when determining the consequences and staff will enact threat assessment procedures.</p>                                                                                                                                                                                                                                                                                            | <p><b>RCES/RCHS: Level 1, 2, 3</b></p>                        |
| <p><b>TRESPASSING/UNAUTHORIZED ENTRY:</b> Trespassing is the wrongful entry to or presence on school property after being given a verbal or written warning to leave or not to be on school property and is prohibited. <i>If a student is suspended out of school, they may not be on RCES or RCHS property, or at any school-sponsored event - regardless of location - at any time during the suspension.</i></p>                                                                                                                                                                        | <p><b>RCES/RCHS: Level 2, 3</b></p>                           |
| <p><b>UNACCEPTABLE SOCIAL BEHAVIOR:</b> Students shall not display unacceptable behavior. This includes inappropriate physical contact or exposure</p>                                                                                                                                                                                                                                                                                                                                                                                                                                      | <p><b>RCES/RCHS: Level 1, 2, 3</b></p>                        |
| <p><b>VANDALISM:</b> Students may not intentionally damage the property of the school district or any personal property, which results in the cleaning, repair, or replacement of the property vandalized. This includes, but is not limited to, defacing of walls, lockers, furniture, books, or other school equipment (including school vehicles) and materials, damage to floors, walls, ceilings, doors, windows, and bulletin boards, mistreatment of any equipment or furnishings, such as visual aids or books and the personal property of others.</p>                             | <p><b>RCES/RCHS: Level 2, 3</b></p>                           |

## RCPS STUDENT CODE OF CONDUCT

| <b><u>Specific Infractions:</u></b>                                                                                                                                                                                                                                                                                                                                                                                                                                                                                                                                                                                                                                                                                                                                                                                                                                                                                                                                                                                                                                                                                                                                                                                                                                                                                                                                                                                                                                                                                                                                                                     | <b><u>Corrective Actions (See p. 13):</u></b> |
|---------------------------------------------------------------------------------------------------------------------------------------------------------------------------------------------------------------------------------------------------------------------------------------------------------------------------------------------------------------------------------------------------------------------------------------------------------------------------------------------------------------------------------------------------------------------------------------------------------------------------------------------------------------------------------------------------------------------------------------------------------------------------------------------------------------------------------------------------------------------------------------------------------------------------------------------------------------------------------------------------------------------------------------------------------------------------------------------------------------------------------------------------------------------------------------------------------------------------------------------------------------------------------------------------------------------------------------------------------------------------------------------------------------------------------------------------------------------------------------------------------------------------------------------------------------------------------------------------------|-----------------------------------------------|
| <p><b>WEAPONS</b> (<i>From School Board Policy JFCD</i>): Carrying, bringing, using or possessing any firearm, dangerous device, or dangerous or deadly weapon in any school building, on school grounds, in any school vehicle or at any school-sponsored activity without the authorization of the school or the school division is prohibited, and grounds for disciplinary action. Violation of this policy shall require that proceedings for the discipline of the student involved be initiated immediately by the principal. Such weapons include, but are not limited to: any pistol, shotgun, stun weapon, revolver, rifle, or other firearm designed or intended to propel a projectile of any kind; unloaded firearms in closed containers; toy guns and look-alike guns; any dirk, knife or razor; slingshots, spring sticks, brass or metal knuckles, blackjacks, any flailing instrument (which may be known as a nun chuck, nunchakus, - fighting chain, etc.); any disc of whatever configuration, having at least two points or pointed blade (throwing star, oriental dart, etc.); explosives, destructive devices, and other dangerous articles.</p> <p>Note: The Rappahannock County School Board will not tolerate on school property or in any vehicle on school property, or at any school-sponsored event on or off school property, any weapons including any of the above, hunting firearms, and knives used for work. This prohibition also extends to those holding concealed weapons' permits.</p> <p>Regulation adopted: August 8, 1995<br/>Revised: August 11, 2020</p> | <p><b>RCES/RCHS: Level 3</b></p>              |

### **Application of Policy**

The standards of student conduct apply to all students under the jurisdiction of a school board.

- (1) Disciplinary action will be determined based on the facts of each incident in the reasonable discretion of the school board and other appropriate school officials.
- (2) Disciplinary responses to student behavior will be aligned with the levels established by the school board.
- (3) Students are subject to disciplinary action for misconduct that occurs:
  - a) In school or on school property,
  - b) On a school vehicle,
  - c) While participating in or attending any school-sponsored activity or trip,
  - d) On the way to and from school, and
  - e) Off school property, when the acts lead to
    - (i) an adjudication of delinquency or a conviction for an offense listed in § 16.1-305.1. of the *Code of Virginia* (unlawful purchase, possession or use of a weapon, homicide, felonious assault and bodily wounding, criminal sexual assault, manufacture, sale, gift, distribution or possession of Schedule I or II controlled substances or marijuana, arson, and related crimes, and burglary and related offenses), criminal street gang activity or recruitment for such activity, or an act of violence by a mob, or
    - (ii) a charge that would be a felony if committed by an adult (*Model Guidance Document*, 2021, p. 53).



## RCPS STUDENT CODE OF CONDUCT

### **Search and Seizure**

To maintain order and discipline in the schools and to protect the health, safety and welfare of students and school personnel, school authorities may search a student, a student's purse or book bag, a student's personal electronic devices (phones, tablets, computers, etc.), student lockers or student automobiles and may seize any illegal, unauthorized, or contraband materials discovered in the search, consistent with applicable law. Lockers and other storage facilities made available to students for temporary storage of their personal possessions remain under the joint control of students and the school administration. The school administration has the right to search lockers, desks, and other storage facilities for items which violate law, school policies and regulations, or which may be harmful to the school or its students. Lockers and other storage facilities are subject to periodic searches for any reason at any time without notice, without student consent, and without a search warrant. To ensure a drug-and-alcohol-free learning environment for students and staff, school officials may, at their discretion, request assistance from a variety of available resources, including the Rappahannock County Sheriff's Department, substance abuse counselors, the Rappahannock County Health Department, and the active and passive canine teams coordinated by the local law enforcement agencies. The school administration has the right to search any student when there is a reasonable suspicion that the student possesses an item which violates law, school policies and regulations, or which may be harmful to the school or its students. In no event shall strip-searches of students be conducted.

At times, at the principal's discretion and in accordance with School Board policy and all applicable law, metal detectors may be used to assist school staff in ensuring the safety of students, school staff, and guests. The student's individual right to privacy and freedom from unreasonable search and seizure is balanced by the school's responsibility to protect the health, safety, and welfare of all persons within the school community. Should illegal materials be found during a search, law enforcement officials will be notified. Any contraband seized by school personnel pursuant to RCPS policy JFG may be admissible in any subsequent criminal proceeding. The student or employee in violation of the policies, rules and regulations of the Rappahannock County School Board shall be disciplined in accordance with the rules of the regulations of the School Board, regardless of whether criminal proceedings are pursued (RCPS Policy JFG).

## RCPS STUDENT CODE OF CONDUCT

### **\*Appendix A: RULES FOR BUS RIDERS**

**\*Per 8VAC 20-70-110 of the Virginia Code, parents or their designee are requested to accompany their young children to and from the bus stop.**

In order to provide all passengers with a safe environment, the bus driver is in charge. The driver's directions are to be followed at all times. The driver may assign seats to insure an orderly, safe environment. All school rules are to be followed while on school buses. **In addition, to assist the driver in providing this safe environment, all students are to conform to the behaviors listed below.**

- We will not have in our possession or use objects, which are forbidden, in school. This includes but not limited to weapons, drugs, alcohol, tobacco, animals, lighters, balloons, etc.
- Radios, iPods, mp3 players, etc. will be allowed with earphones. Students are discouraged from bringing cell phones on the bus and to school. Cell phones should be turned off and in a student's pocket or book bag.
- Drivers may confiscate these devices if they become a distraction.
- We will not fight, hit, throw things, or engage in horseplay on the bus.
- We will keep our arms, heads, legs, and possessions inside the bus.
- We will take our seats and remain seated, facing forward, until exiting the bus.
- We will not sell or purchase items on the bus.
- We will take care of the bus by being careful not to damage it.
- We will help to keep the bus clean and safe. Eating or drinking on the bus is not permitted. Gum chewing is not permitted on the bus.
- We will be courteous and respectful in our words and actions towards others. Behaviors to be avoided include but are not limited to: throwing items, obscene language or gestures, name-calling, racial remarks, ridiculing others, disrobing, or damaging property.
- We will keep our belongings under control and out of the aisle. Large school related items may be brought on the bus if they can be safely stored within the seating compartment.
- We will keep our conversation at a low volume as not to distract the driver.
- We will get our parent's permission and the school's written permission before making any change in bus routing, such as getting off at another stop or riding a different bus.

**Students who fail to comply with the above rules or in any manner exhibit improper behavior may be denied bus-riding privileges. This penalty may range from a day to the remainder of the school year.**

## RCPS STUDENT CODE OF CONDUCT

### BUS DISCIPLINE PROCEDURES

1. It is the responsibility of parents, instructional leaders, bus drivers and the individual student to ensure that riders follow bus regulations to provide an atmosphere of safety, respect and a regard for the protection of public property.

2. All students riding a school bus will be required to comply with the Rules for Bus Riders (previous page) as outlined by the Rappahannock County Public Schools.

3. When a bus rider violates bus rules, the following will be the course of action:

A. On the **first** violation, the driver will instruct and warn the student of the violation and report the problem directly to the appropriate administrator. After investigating the violation and meeting with the student, the administrator may assign the consequences and advise the parent of this warning by written notice. The parents will also be advised of the consequences of a second offense.

B. On the **second** violation, the driver will instruct and warn the student of the violation, contact the parent, and report the problem directly to the appropriate administrator. After investigating the violation and meeting with the student, the administrator may impose a one-to-four day suspension of bus riding privileges. The parents will also be advised of the consequences of a third offense.

C. On the **third** violation, the bus driver will inform the student of the violation, contact the parent and report the problem directly to the appropriate administrator. After investigating the violation and meeting with the student, the administrator may impose up to a ten-day suspension of bus riding privileges. A parent conference must be held in order for the student to be reinstated on the bus.

D. **Continued violations** may result in suspension of bus riding privileges for the remainder of the school year. The bus driver will inform the student of the violation and report the problem directly to the appropriate administrator.

4. Parents should be aware that absence from school due to suspension from the school bus will be in violation of Virginia's Compulsory Attendance Law and the Rappahannock County School Board's policy on school attendance. It is the parents' responsibility to provide transportation when the student is suspended from the bus.

5. It is important to note that violations of a very serious nature may necessitate that a student or students be removed immediately from the school bus and/or suspended from school. Moreover, it is the responsibility of the administrator to consider the circumstances of the bus rule violations, and to exercise discretion and sound judgment in order to map an appropriate course of action.

## COMPLAINT OF BULLYING FORM

**\*Complaints can also be made anonymously to the Student Support Hotline at  
540-683-0437**

*Bullying* is considered as any aggressive and unwanted behavior that is intended to harm, intimidate or humiliate the victim; involves a real or perceived power imbalance between the aggressor or aggressors and the victim; and is repeated over time or causes severe emotional trauma. *Bullying* includes cyber bullying. *Bullying* does not include ordinary teasing, horseplay, argument, or peer conflict. The principal and staff of Rappahannock County Public Schools are committed to enforcement of the *Student Code of Conduct* and will respond promptly and appropriately to complaints of bullying. Any student can complain about bullying by talking to an administrator and/or completing this form and returning it to an assistant principal or principal. This form may be photocopied or obtained from the school counseling office.

### PLEASE PRINT

Name of student completing this form: \_\_\_\_\_

School: \_\_\_\_\_

Name(s) of student(s) accused of bullying: \_\_\_\_\_

\_\_\_\_\_  
\_\_\_\_\_

Description of the bullying behavior (who, what, when, why, where, and how). Use specific dates, times, locations, witness names, etc. if possible)

\_\_\_\_\_  
\_\_\_\_\_  
\_\_\_\_\_  
\_\_\_\_\_.

Signature of student completing this form: \_\_\_\_\_

Date: \_\_\_\_\_

NOTE: All complaints will be followed by an investigation. Those accused as well as the parents of students involved will be informed of complaints, witnesses will be interviewed, and all information will remain confidential except for that which must be shared as part of the investigation.

## RCPS STUDENT CODE OF CONDUCT

### COMPLAINT OF HARRASSMENT OR DISCRIMINATION FORM

**\*Complaints can also be made anonymously to the Student Support Hotline at  
540-683-0437**

The Rappahannock County Public Schools will not tolerate words, gestures, symbols, actions, or physical contact that offends, intimidates, threatens, or persecutes others. The principal and staff of RCPS are committed to enforcement of the "Student Code of Conduct" and will respond promptly and appropriately to complaints of harassment or discrimination, to include harassment based on sex, race, color, national origin, religion and disability. Any student can file a complaint by talking to an administrator and/or completing this form and returning it to an assistant principal or principal. This form may be photocopied or obtained from the school counseling office.

#### PLEASE PRINT

Name of student completing this form: \_\_\_\_\_

School: \_\_\_\_\_

Name(s) of person(s) accused of harassment or discrimination: \_\_\_\_\_

\_\_\_\_\_  
\_\_\_\_\_

Description of complaint: (use specific dates, times, witness names, etc. if possible)

\_\_\_\_\_  
\_\_\_\_\_  
\_\_\_\_\_  
\_\_\_\_\_.

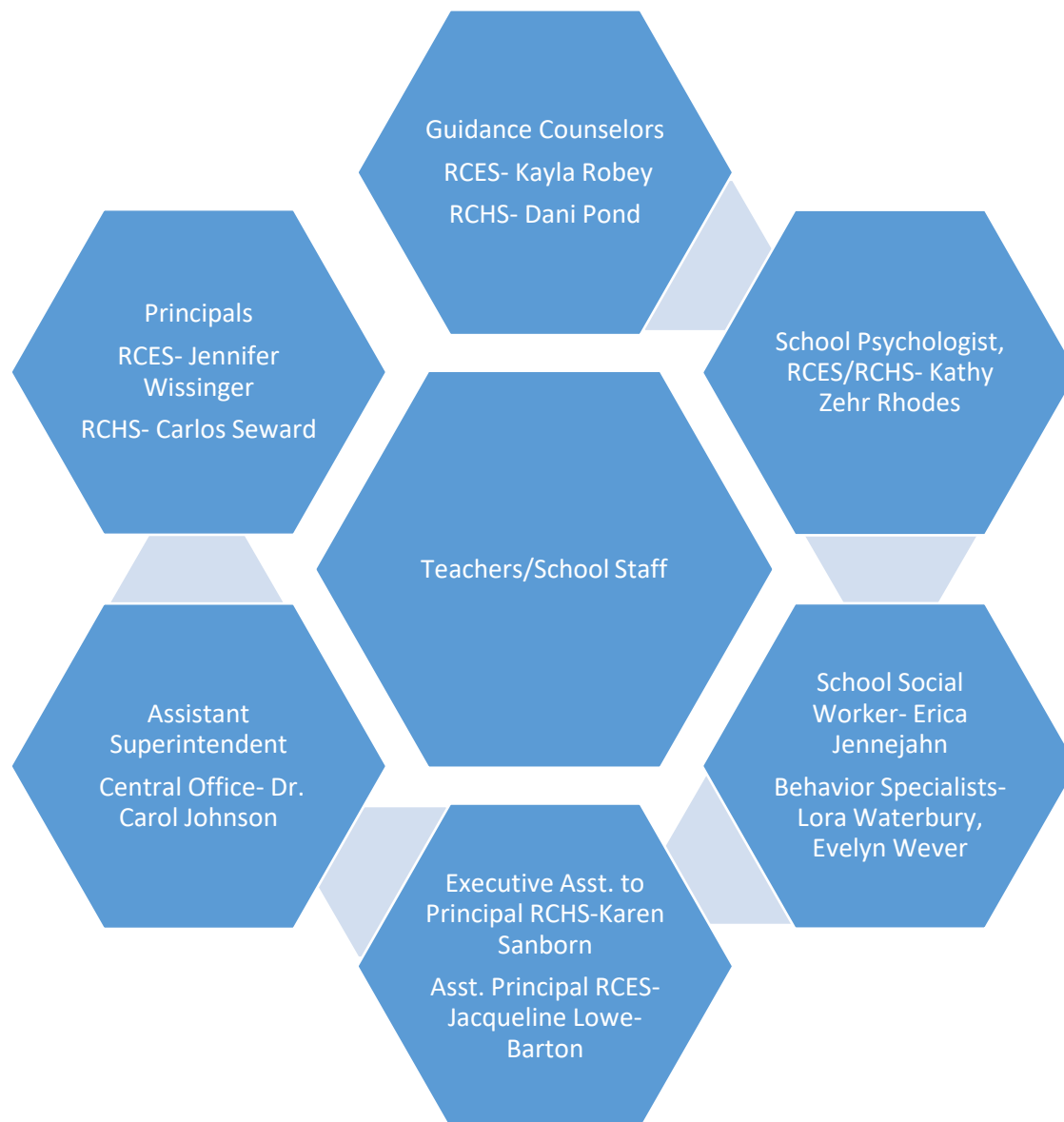
Signature of student completing this form: \_\_\_\_\_

Date: \_\_\_\_\_

NOTE: All complaints will be followed by an investigation. Those accused as well as the parents of students involved will be informed of complaints, witnesses will be interviewed, and all information will remain confidential except for that which must be shared as part of the investigation.

## RCPS STUDENT CODE OF CONDUCT

### *Who to Contact for Support with Student Conduct and Concerns*



**RCES: 540-227-0200**

**RCHS: 540-227-0745**

**Central Office: 540-227-0023**

## STUDENT CONDUCT

### Generally

The Rappahannock County School Board establishes expectations for student conduct so that public education is conducted in an atmosphere free of disruption and threat to persons or property and supportive of individual rights.

In addition to the types of conduct prohibited below, the superintendent issues Standards of Student Conduct and a list of possible actions for violations of those Standards.

This Policy and the Standards of Student Conduct apply to all Rappahannock County Public school students. They are enforced when the student's conduct occurs when the student is

- On school property.
- Traveling to school or from school.
- Traveling to, at, and from bus stops.
- In School Board vehicles.
- In attendance at any school-sponsored activity.
- Off school property if the conduct disrupts the learning environment.

The School Board and superintendent biennially review the model student conduct code developed by the Virginia Board of Education to incorporate into policy and the Standards of Student Conduct a range of discipline options and alternatives to preserve a safe and non-disruptive environment for effective learning and teaching.

### Parental Involvement and Responsibility

Each parent of a student enrolled in Rappahannock County schools has a duty to assist in enforcing this policy, the Standards of Student Conduct and compulsory school attendance in order that education may be conducted in an atmosphere free of disruption and threat to persons or property and supportive of individual rights. This policy, the Standards of Student Conduct, a notice of the requirements of Va. Code § 22.1-279.3, and a copy of the compulsory school attendance law is sent to all parents within one calendar month of the opening of schools simultaneously with any other materials customarily distributed at that time. A statement for the parent's signature acknowledging the receipt of this policy, the Standards of Student Conduct, the requirements of Va. Code § 22.1-279.3 and the compulsory school attendance law is also sent. Parents are notified that by signing the statement of receipt, they are not deemed to waive, but expressly reserve, their rights protected by the constitution or laws of the United States or Virginia. Each school maintains records of the signed statements.

The school principal may request the student's parent or parents, if both have legal and physical custody, to meet with the principal or principal's designee to review this policy, the Standards of Student Conduct and the parent's or parents' responsibility to participate with the school in disciplining the student and maintaining order, to ensure



the student's compliance with compulsory school attendance law and to discuss improvement of the child's behavior, school attendance and educational progress.

The school principal may notify the parents of any student who violates a School Board policy, the Standards of Student Conduct, or the compulsory school attendance requirements when such violation could result in the student's suspension or the filing of a court petition, whether or not the school administration has imposed such disciplinary action or filed such a petition. The notice shall state (1) the date and particulars of the violation; (2) the obligation of the parent to take actions to assist the school in improving the student's behavior and ensuring compliance with compulsory school attendance; (3) that, if the student is suspended, the parent may be required to accompany the student to meet with school officials; and (4) that a petition with the juvenile and domestic relations court may be filed under certain circumstances to declare the student a child in need of supervision.

The principal or principal's designee notifies the parent of any student involved in an incident required to be reported to the superintendent and Virginia Board of Education as described in Policy CLA Reporting Acts of Violence and Substance Abuse.

If a parent fails to comply with the requirements of this Policy, the School Board may ask the Juvenile and Domestic Relations Court to proceed against the parent in accordance with the requirements of the Code of Virginia.

A parent, guardian or other person having control or charge of a student is notified in writing of any disciplinary action taken with regard to any incident upon which an adjudication of delinquency or conviction for an offense listed in Va. Code § 16.1-260.G was based and the reasons therefor. The parent or guardian is also notified of the parent or guardian's right to review, and to request an amendment of, the student's scholastic record, in accordance with regulations of the Board of Education governing the management of scholastic records.

## Prevention, Intervention, and Treatment Activities and Programs

Any student involved in a reportable drug or violent incident, as described in Policy CLA Reporting Acts of Violence and Substance Abuse, participates in prevention and intervention activities deemed appropriate by the superintendent or superintendent's designee. Further, any student who has been found to be in possession of or under the influence of drugs or alcohol on school property or at a school sponsored activity may be required to (1) undergo evaluation for drug or alcohol abuse and (2) participate in a drug and/or alcohol treatment program if recommended by the evaluator and if the parent consents.

## Prohibited Conduct

The following conduct is prohibited. Students engaging in such conduct are subject to disciplinary action.

#### Bullying and Use of Electronic Means for Bullying

Bullying is prohibited. "Bullying" means any aggressive and unwanted behavior that is intended to harm, intimidate, or humiliate the victim; involves a real or perceived power imbalance between the aggressor or aggressors and victim; and is repeated over time or causes severe emotional trauma. "Bullying" includes cyber bullying. "Bullying" does not include ordinary teasing, horseplay, argument or peer conflict.

#### Gang Activity

Gang activity, as defined in Policy JFCE Gang Activity or Association, is prohibited.

#### Harassment

As provided in Policy JFHA/GBA Prohibition Against Harassment and Retaliation, students are prohibited from harassing other students, school staff, volunteers, student teachers or any other person present in school facilities or at school functions.

#### Hazing

Hazing is prohibited.

Hazing means to recklessly or intentionally endanger the health or safety of a student or students or to inflict bodily harm on a student or students in connection with or for the purpose of initiation, admission into or affiliation with or as a condition for continued membership in a club, organization, association, fraternity, sorority, or student body regardless of whether the student or students so endangered or injured participated voluntarily in the relevant activity.

#### Intentional Injury of Others

Students are prohibited from intentionally injuring others.

#### Self-defense

Whether a student acted in self-defense is considered when the student's conduct is evaluated for disciplinary action.

#### Threats: Intimidation

Students are prohibited from making any verbal, written or physical threat of bodily injury to another person.

#### Trespassing

Students, including students who have been suspended or expelled, are subject to disciplinary action for trespassing on school property

#### Use and/or Possession of Alcohol, Tobacco Products, Nicotine Vapor Products, Anabolic Steroids, and Other Drugs

Students are prohibited from possessing, using, or distributing any of the restricted substances listed below on school property, on school buses or during school activities, on or off school property.

Students are prohibited from attempting to possess, use, consume, procure and/or purchase, any of the restricted substances listed below or what is represented by or to the student to be any of the restricted substances listed below or what the student believes is any of the restricted substances listed below.

Students are prohibited from being under the influence of any of the restricted substances listed below, regardless of whether the student's condition amounts to legal intoxication.

Restricted substances include but are not limited to alcohol, tobacco products as defined in Policy JFCH Tobacco Products and Nicotine Vapor Products, nicotine vapor products as defined in Policy JFCH Tobacco Products and Nicotine Vapor Products, inhalant products, and other controlled substances defined in the Drug Control Act, Chapter 15.1 of Title 54 of the Code of Virginia, such as anabolic steroids, stimulants, depressants, hallucinogens, marijuana, imitation and look-alike drugs, drug paraphernalia and any prescription or non-prescription drug possessed in violation of School Board policy.

In addition to any other consequences which may result, a student who is a member of a school athletic team will be ineligible for two school years to compete in interscholastic athletic competition if the school principal and the superintendent determine that the student used anabolic steroids during the training period immediately preceding or during the sport season of the athletic team, unless such steroid was prescribed by a licensed physician for a medical condition.

#### Use of Profane or Obscene Language and Conduct

Students are prohibited from using profane or obscene language or engaging in profane or obscene conduct.

#### Vandalism

Students are prohibited from vandalizing school property and the property of any School Board staff member or any other person.

The School Board may recover damages sustained because of the willful or malicious destruction or, or damage to, public property pursuant to Policy ECAB Vandalism.

Adopted: August 8, 1995

Reviewed: May 11, 1999

Revised: August 10, 2000, July 10, 2001, November 9, 2004, June 14, 2005, October 10, 2006, December 9, 2014, July 14, 2020, July 13, 2021

Legal Refs.: Code of Virginia, 1950, as amended, §§16.1-260, 18.2-56, 18.2-308.1, 18.2-308.7, 22.1-23.3, 22.1-78, 22.1-200.1, 22.1-253.13:7.C.3; 22.1-254, 22.1-276.3, 22.1-277, 22.1-277.08, 22.1-277.2, 22.1-279.1, 22.1-279.3, 22.1-279.3:1, 22.1-279.6, 22.1-288.2.

Model Guidance for Positive and Preventive Code of Student Conduct Policy and Alternatives to Suspension, Virginia Board of Education January 2019.

|              |           |                                                                                  |
|--------------|-----------|----------------------------------------------------------------------------------|
| Cross Refs.: | CLA       | Reporting Acts of Violence and Substance Abuse                                   |
|              | EBB       | Threat Assessment Teams                                                          |
|              | ECAB      | Vandalism                                                                        |
|              | IIBEA/GAB | Acceptable Computer System Use                                                   |
|              | JFCE      | Gang Activity or Association                                                     |
|              | JFCF      | Drugs in School                                                                  |
|              | JFG       | Search and Seizure                                                               |
|              | JFHA/GBA  | Prohibition Against Harassment and Retaliation                                   |
|              | JGA       | Corporal Punishment                                                              |
|              | JGD/JGE   | Student Suspension/Expulsion                                                     |
|              | JGDA      | Disciplining Students with Disabilities                                          |
|              | JGDB      | Discipline of Students with Disabilities for Infliction of Serious Bodily Injury |
|              | JN        | Student Fees, Fines and Charges                                                  |