

PROPERTY LINE

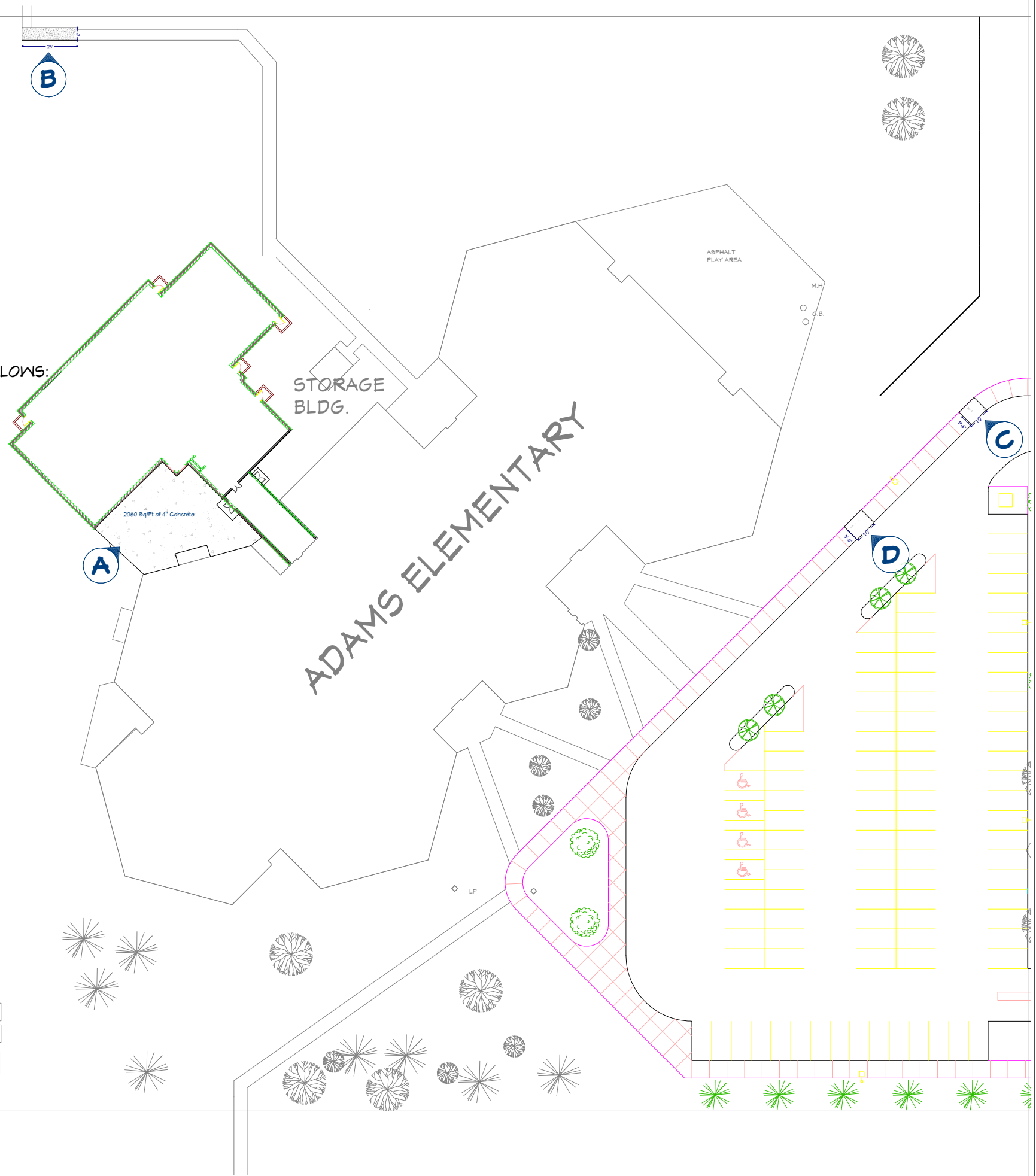
THREE AREAS OF CONCRETE REPLACEMENT AND ONE ADDITION AS FOLLOWS:

- (A) ADD A 2060 SQ/FT CONCRETE PAD AT A DEPTH OF 4"
- (B) REPLACE 25'L X 6'W X 4"D SECTION OF SIDEWALK
- (C) REPLACE 10'L X 5'6"W X 4"D SECTION OF SIDEWALK AND A 2' SECTION OF CURB
- (D) REPLACE 10'L X 5'6"W X 4"D SECTION OF SIDEWALK

NOTES:

1. WORK TO INCLUDE SAW CUTTING WHERE NECESSARY TO REMOVE SMALLER SECTIONS THAT ARE WITHIN LARGER AREAS.
2. ALL CONCRETE AND SPOIL TO BE REMOVED FROM SITE.
3. WHERE NECESSARY PERFORM EXCAVATION OF SOIL AS REQUIRED TO ATTAIN PROPER DEPTH FOR CONCRETE THICKNESS.
4. PROVIDE CLEAN SANDFILL WHERE NECESSARY, INCLUDING COMPACTION, TO ATTAIN SUITABLE BASE.
5. ALL NEW CONCRETE SLABS TO INCLUDE EXPANSION JOINT MATERIAL AT EXISTING JOINTS THAT ARE BEING REPLACED WITH NEW. PROVIDE "SCORED" CONTROL JOINTS AT SPACING TO MATCH EXISTING SLAB
6. CONTRACTOR TO INSTALL GRADED BACKFILL IN AREAS WHERE FORM WORK OR OTHER RELATED WORK CAUSES DEPRESSIONS, AND SEED.
7. ALL NEW CONCRETE TO BE 4000 PSI WITH MESH OR FIBER

PROPERTY LINE



REVISION TABLE	
NUMBER	DATE

ADAMS ELEMENTARY
1005 ADAMS DR
MIDLAND, MICH 48642

DRAWINGS PROVIDED BY:
MIDLAND PUBLIC SCHOOLS
FACILITIES DEPARTMENT
989-923-5035

DATE:

3/5/2026

SCALE:

SHEET:

P-1

Concrete Repair 2025



Sidewalks Needing Repair

200ft

REVISION TABLE	
NUMBER	DATE

ADAMS ELEMENTARY
1005 ADAMS DR
MIDLAND, MICH 48642

DRAWINGS PROVIDED BY:
MIDLAND PUBLIC SCHOOLS
FACILITIES DEPARTMENT
989-923-5035

DATE:
3/5/2026

SCALE:

SHEET:

P-2



REVISION TABLE	
NUMBER	DATE

REVISION BY	DESCRIPTION

ADAMS ELEMENTARY
1005 ADAMS DR
MIDLAND, MICH 48642

DRAWINGS PROVIDED BY:
MIDLAND PUBLIC SCHOOLS
FACILITIES DEPARTMENT
989-923-5035

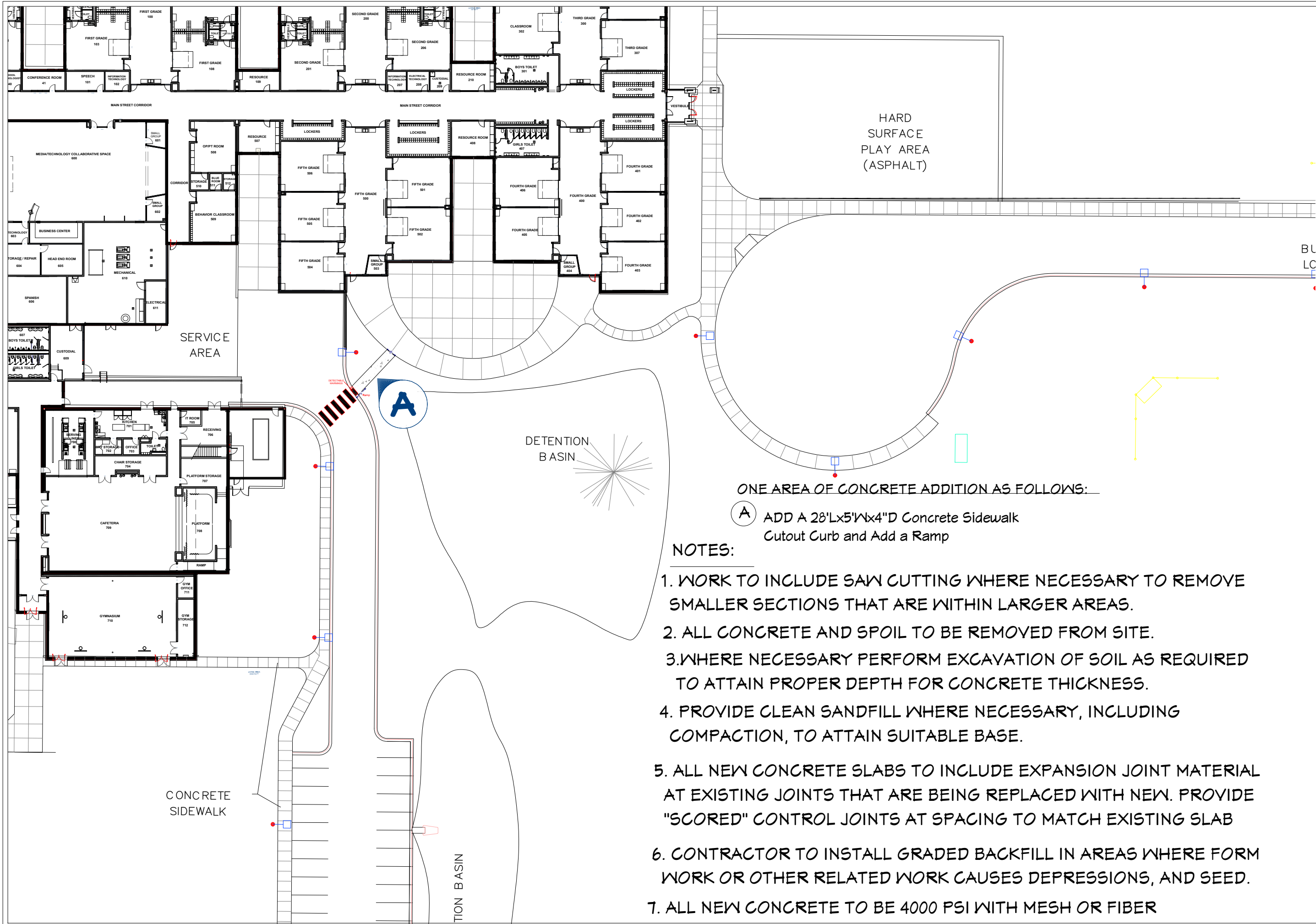
DATE:

3/5/2026

SCALE:

SHEET:

P-3



ONE AREA OF CONCRETE ADDITION AS FOLLOWS:

- Ⓐ ADD A 28'Lx5'Wx4"D Concrete Sidewalk Cutout Curb and Add a Ramp

NOTES:

1. WORK TO INCLUDE SAW CUTTING WHERE NECESSARY TO REMOVE SMALLER SECTIONS THAT ARE WITHIN LARGER AREAS.
2. ALL CONCRETE AND SPOIL TO BE REMOVED FROM SITE.
3. WHERE NECESSARY PERFORM EXCAVATION OF SOIL AS REQUIRED TO ATTAIN PROPER DEPTH FOR CONCRETE THICKNESS.
4. PROVIDE CLEAN SANDFILL WHERE NECESSARY, INCLUDING COMPACTION, TO ATTAIN SUITABLE BASE.
5. ALL NEW CONCRETE SLABS TO INCLUDE EXPANSION JOINT MATERIAL AT EXISTING JOINTS THAT ARE BEING REPLACED WITH NEW. PROVIDE "SCORED" CONTROL JOINTS AT SPACING TO MATCH EXISTING SLAB
6. CONTRACTOR TO INSTALL GRADED BACKFILL IN AREAS WHERE FORM WORK OR OTHER RELATED WORK CAUSES DEPRESSIONS, AND SEED.
7. ALL NEW CONCRETE TO BE 4000 PSI WITH MESH OR FIBER

REVISION TABLE	NUMBER	DATE	REVISOR	DESCRIPTION

CENTRAL PARK
ELEMENTARY
CONCRETE WORK

DRAWINGS PROVIDED BY:
MIDLAND PUBLIC SCHOOLS
FACILITIES DEPARTMENT
989-923-5035

DATE:
3/5/2026

SCALE:

SHEET:
P-4

Concrete Repair 2025



NUMBER	DATE	REVISION	DESCRIPTION

CENTRAL PARK
ELEMENTARY
CONCRETE WORK

DRAWINGS PROVIDED BY:
MIDLAND PUBLIC SCHOOLS
FACILITIES DEPARTMENT
989-923-5035

DATE:
3/5/2026

SCALE:

SHEET:

P-5



REVISION TABLE	
NUMBER	DATE

**CENTRAL PARK
ELEMENTARY
CONCRETE WORK**

DRAWINGS PROVIDED BY:
**MIDLAND PUBLIC SCHOOLS
FACILITIES DEPARTMENT
989-923-5035**

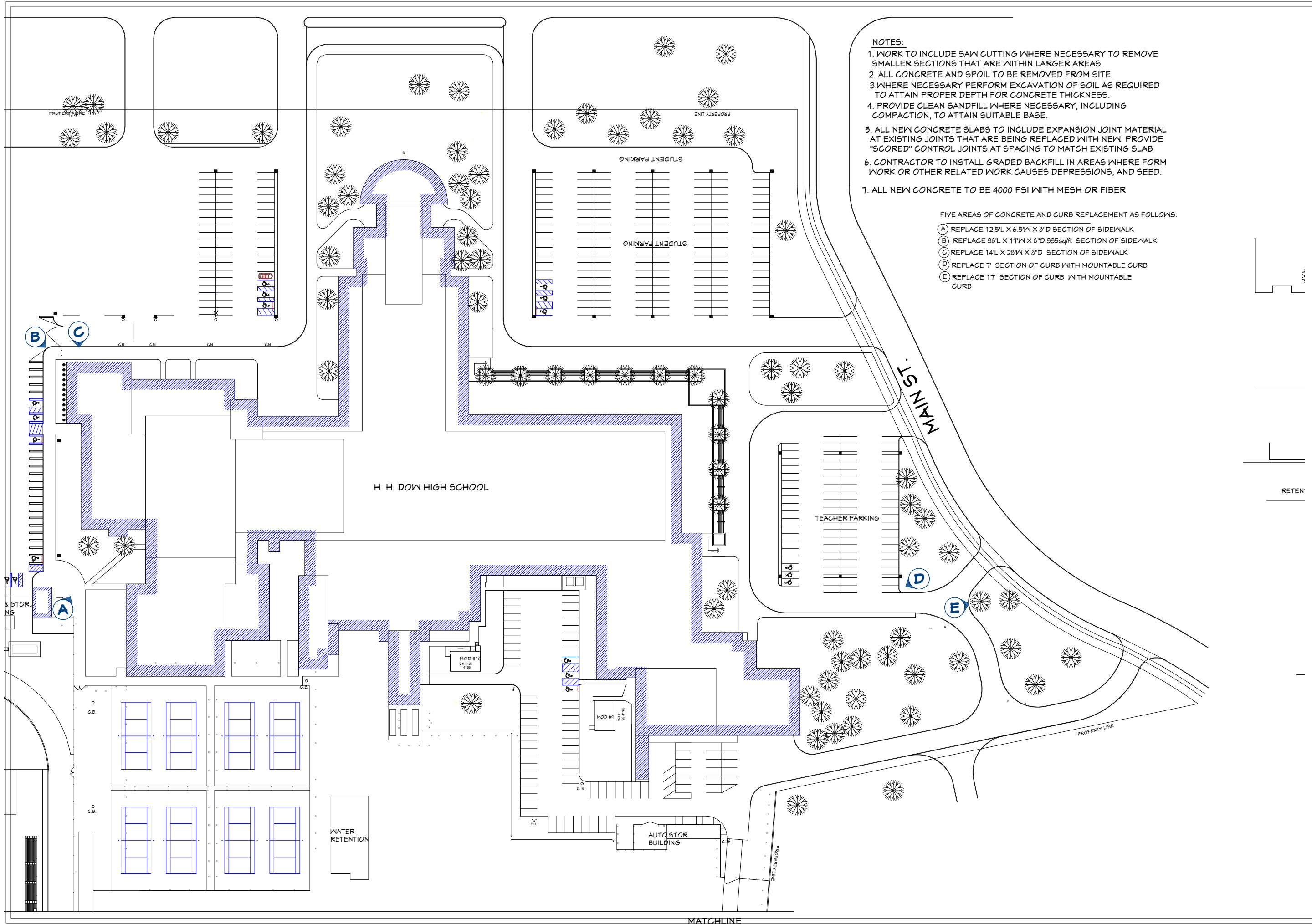
DATE:

3/5/2026

SCALE:

SHEET:

P-6



- NOTES:**
1. WORK TO INCLUDE SAW CUTTING WHERE NECESSARY TO REMOVE SMALLER SECTIONS THAT ARE WITHIN LARGER AREAS.
 2. ALL CONCRETE AND SPOIL TO BE REMOVED FROM SITE.
 3. WHERE NECESSARY PERFORM EXCAVATION OF SOIL AS REQUIRED TO ATTAIN PROPER DEPTH FOR CONCRETE THICKNESS.
 4. PROVIDE CLEAN SANDFILL WHERE NECESSARY, INCLUDING COMPACTION, TO ATTAIN SUITABLE BASE.
 5. ALL NEW CONCRETE SLABS TO INCLUDE EXPANSION JOINT MATERIAL AT EXISTING JOINTS THAT ARE BEING REPLACED WITH NEW. PROVIDE "SCORED" CONTROL JOINTS AT SPACING TO MATCH EXISTING SLAB
 6. CONTRACTOR TO INSTALL GRADED BACKFILL IN AREAS WHERE FORM WORK OR OTHER RELATED WORK CAUSES DEPRESSIONS, AND SEED.
 7. ALL NEW CONCRETE TO BE 4000 PSI WITH MESH OR FIBER

- FIVE AREAS OF CONCRETE AND CURB REPLACEMENT AS FOLLOWS:
- (A) REPLACE 12.5'L X 6.5'W X 8"D SECTION OF SIDEWALK
 - (B) REPLACE 38'L X 1'W X 8"D 335sq/ft SECTION OF SIDEWALK
 - (C) REPLACE 14'L X 28'W X 8"D SECTION OF SIDEWALK
 - (D) REPLACE 7' SECTION OF CURB WITH MOUNTABLE CURB
 - (E) REPLACE 17' SECTION OF CURB WITH MOUNTABLE CURB

REVISION TABLE	NUMBER	DATE	REVISOR	DESCRIPTION

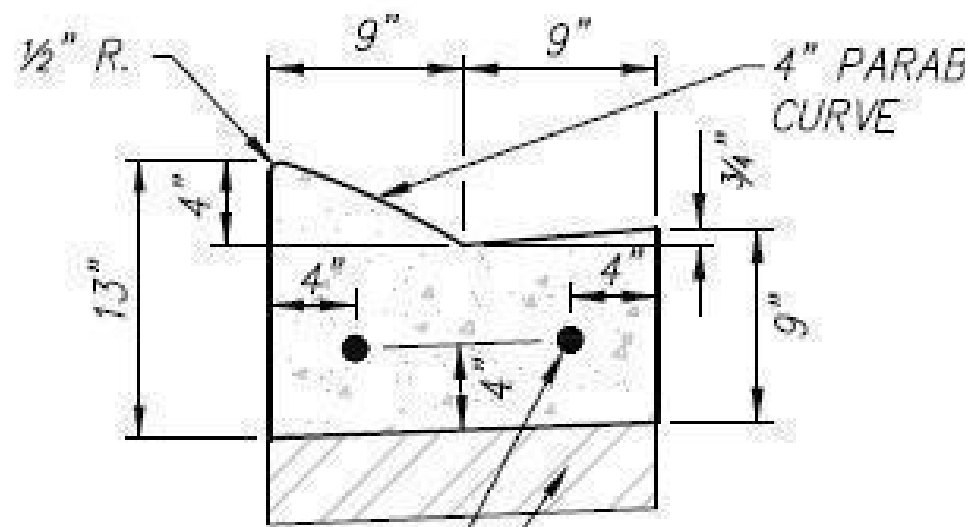
**H. H. DOW HIGH SCHOOL
CONCRETE WORK**

DRAWINGS PROVIDED BY:
**MIDLAND PUBLIC SCHOOLS
FACILITIES DEPARTMENT
989-923-5035**

DATE: 3/5/2026

SCALE:

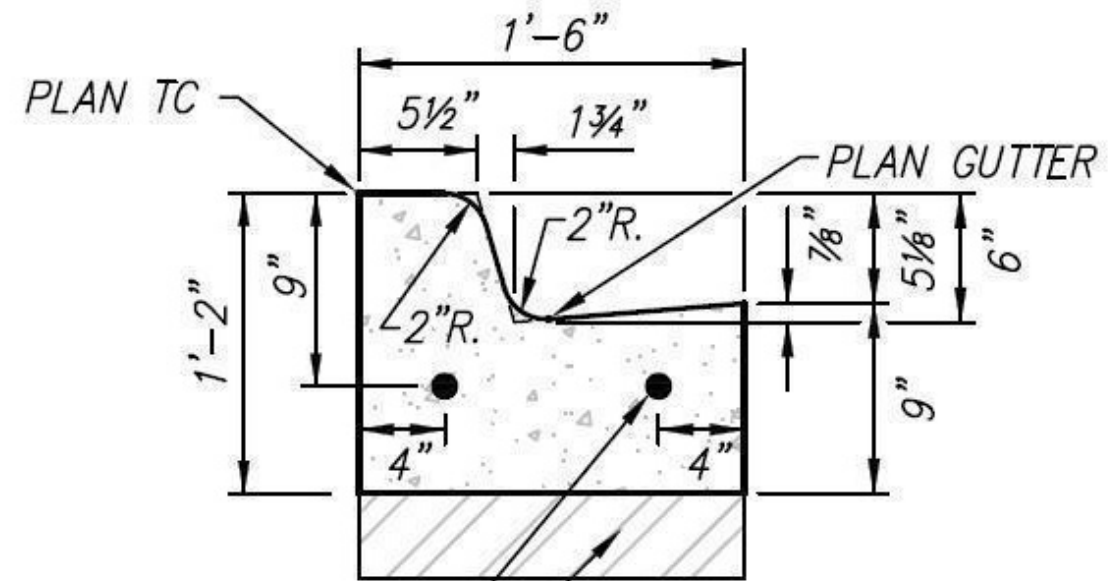
SHEET: **P-7**



EPOXY COATED #4 BAR (TYP)
4" LIMESTONE AGG. BASE, 21AA

DETAIL

4" MOUNTABLE CURB & GUTTER STANDARD PAN



EPOXY COATED #4 BAR (TYP)
4" LIMESTONE AGG. BASE, 21AA

DETAIL

6" CURB & GUTTER STANDARD PAN
(MDOT TYPE F1)



REVISION TABLE	NUMBER	DATE	REVISION BY	DESCRIPTION

DRAWINGS PROVIDED BY:
MIDLAND PUBLIC SCHOOLS
FACILITIES DEPARTMENT
989-923-5035

DATE:

3/5/2026

SCALE:

SHEET:

P-8



--

NUMBER	DATE	REVISION TABLE	DESCRIPTION

**H. H. DOW HIGH SCHOOL
CONCRETE WORK**

DRAWINGS PROVIDED BY:
**MIDLAND PUBLIC SCHOOLS
FACILITIES DEPARTMENT**
989-923-5035

DATE:

3/5/2026

SCALE:

SHEET:

P-9



A



B



C



D

IMG_2535

REVISION TABLE	
NUMBER	DATE

**H. H. DOW HIGH SCHOOL
CONCRETE WORK**

DRAWINGS PROVIDED BY:
**MIDLAND PUBLIC SCHOOLS
FACILITIES DEPARTMENT
989-923-5035**

DATE:

3/5/2026

SCALE:

SHEET:

P-10



DRAWINGS PROVIDED BY:

MIDLAND PUBLIC SCHOOLS
FACILITIES DEPARTMENT
989-923-5035

DATE:

3/5/2026

SCALE:

SHEET:

P-11

H. H. DOW HIGH SCHOOL
CONCRETE WORK

REVISION TABLE

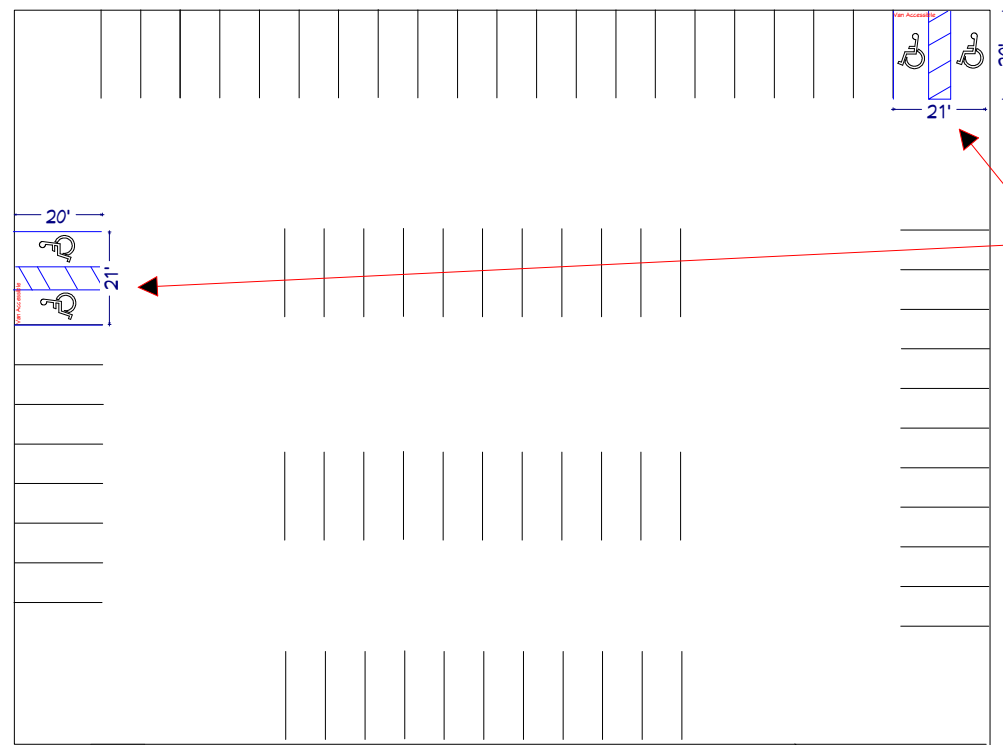
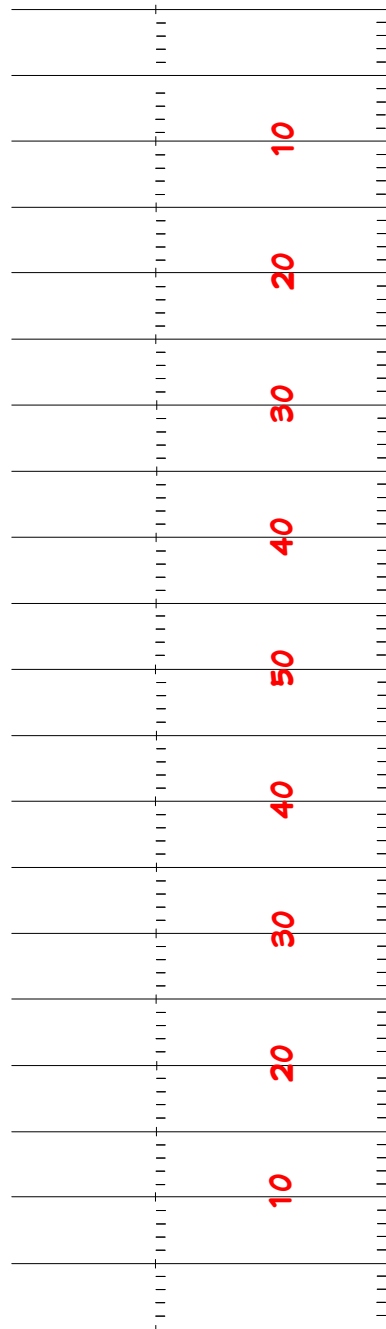
NUMBER	DATE	REVISED BY	DESCRIPTION

TWO PADS AS FOLLOWS:

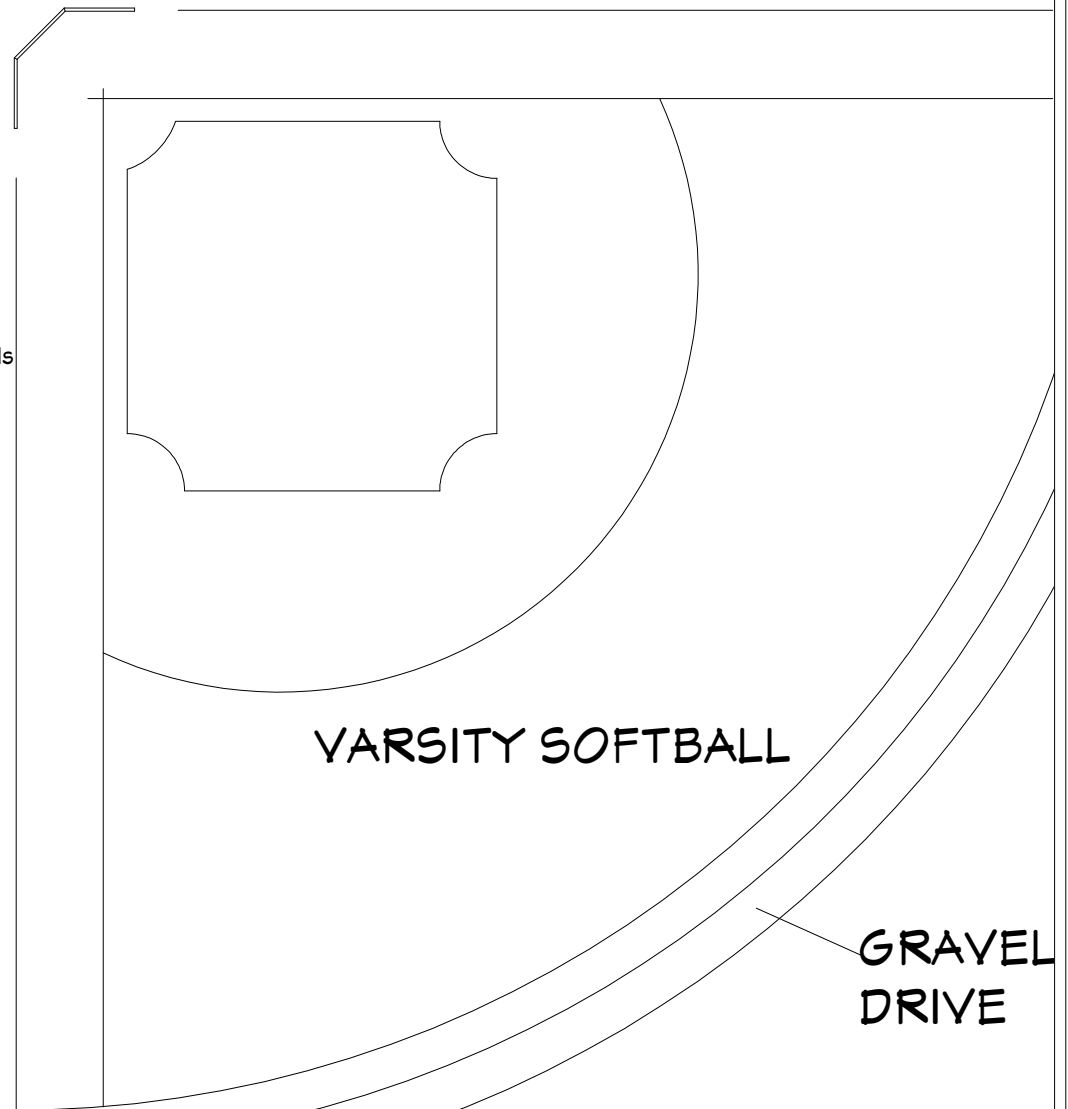
A Add Two 20'Lx21'Wx6"D Concrete Pads

NOTES:

1. PERFORM EXCAVATION OF SOIL AS REQUIRED TO ATTAIN PROPER DEPTH FOR CONCRETE THICKNESS.
2. ALL CONCRETE AND SPOIL TO BE REMOVED FROM SITE.
3. PROVIDE CLEAN SANDFILL WHERE NECESSARY, INCLUDING COMPACTION, TO ATTAIN SUITABLE BASE.
4. ALL NEW CONCRETE SLABS TO INCLUDE EXPANSION JOINT MATERIAL AT EXISTING JOINTS THAT ARE BEING REPLACED WITH NEW. PROVIDE "SCORED" CONTROL JOINTS AT SPACING TO MATCH EXISTING SLAB
5. CONTRACTOR TO INSTALL GRADED BACKFILL IN AREAS WHERE FORM WORK OR OTHER RELATED WORK CAUSES DEPRESSIONS, AND SEED.
6. ALL NEW CONCRETE TO BE 4000 PSI WITH MESH OR FIBER



A
Four two 20'Lx21'Wx6"D Pads



REVISION TABLE	NUMBER	DATE	REVISED BY	DESCRIPTION

H. H. DOW HIGH SCHOOL
SPORTS FIELD
CONCRETE WORK

DRAWINGS PROVIDED BY:
MIDLAND PUBLIC SCHOOLS
FACILITIES DEPARTMENT
989-923-5035

DATE:

3/5/2026

SCALE:

SHEET:

P-12



21'L x 20'W x 6\"D



--

REVISION TABLE		
NUMBER DATE	REVISOR	DESCRIPTION

--

**H. H. DOW HIGH SCHOOL
SPORTS FIELD
CONCRETE WORK**

DRAWINGS PROVIDED BY:
MIDLAND PUBLIC SCHOOLS
FACILITIES DEPARTMENT
989-923-5035

DATE:

3/5/2026

SCALE:

SHEET:

P-13



REVISION TABLE

NUMBER	DATE	REVISED BY	DESCRIPTION

**H. H. DOW HIGH SCHOOL
SPORTS FIELD
CONCRETE WORK**

DRAWINGS PROVIDED BY:
**MIDLAND PUBLIC SCHOOLS
FACILITIES DEPARTMENT
989-923-5035**

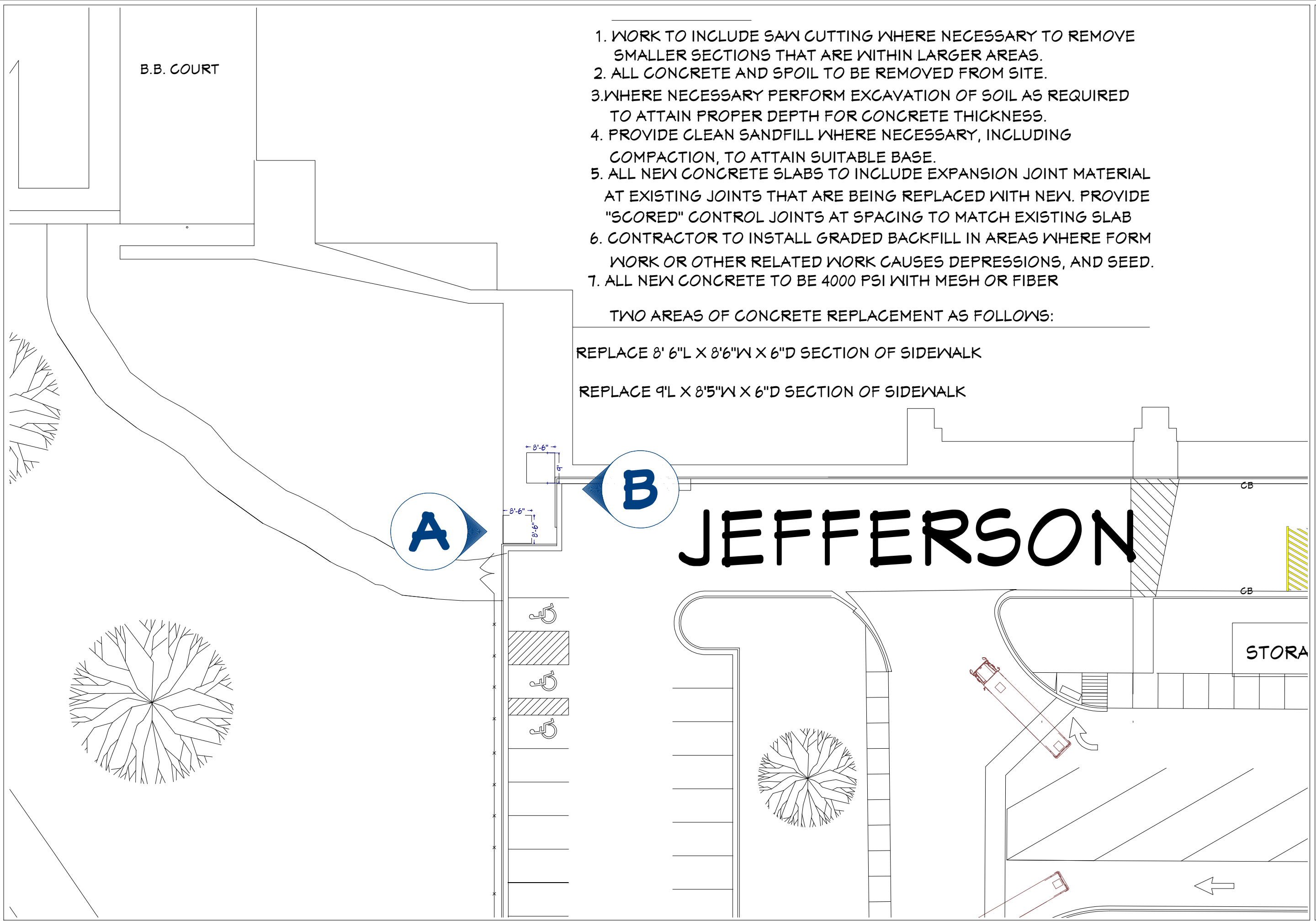
DATE:

3/5/2026

SCALE:

SHEET:

P-14



1. WORK TO INCLUDE SAW CUTTING WHERE NECESSARY TO REMOVE SMALLER SECTIONS THAT ARE WITHIN LARGER AREAS.
2. ALL CONCRETE AND SPOIL TO BE REMOVED FROM SITE.
3. WHERE NECESSARY PERFORM EXCAVATION OF SOIL AS REQUIRED TO ATTAIN PROPER DEPTH FOR CONCRETE THICKNESS.
4. PROVIDE CLEAN SANDFILL WHERE NECESSARY, INCLUDING COMPACTION, TO ATTAIN SUITABLE BASE.
5. ALL NEW CONCRETE SLABS TO INCLUDE EXPANSION JOINT MATERIAL AT EXISTING JOINTS THAT ARE BEING REPLACED WITH NEW. PROVIDE "SCORED" CONTROL JOINTS AT SPACING TO MATCH EXISTING SLAB
6. CONTRACTOR TO INSTALL GRADED BACKFILL IN AREAS WHERE FORM WORK OR OTHER RELATED WORK CAUSES DEPRESSIONS, AND SEED.
7. ALL NEW CONCRETE TO BE 4000 PSI WITH MESH OR FIBER

TWO AREAS OF CONCRETE REPLACEMENT AS FOLLOWS:

- REPLACE 8' 6"L X 8'6"W X 6"D SECTION OF SIDEWALK
- REPLACE 9'L X 8'5"W X 6"D SECTION OF SIDEWALK

REVISION TABLE	NUMBER	DATE	REVISION BY	DESCRIPTION

JEFFERSON MIDDLE SCHOOL
CONCRETE WORK

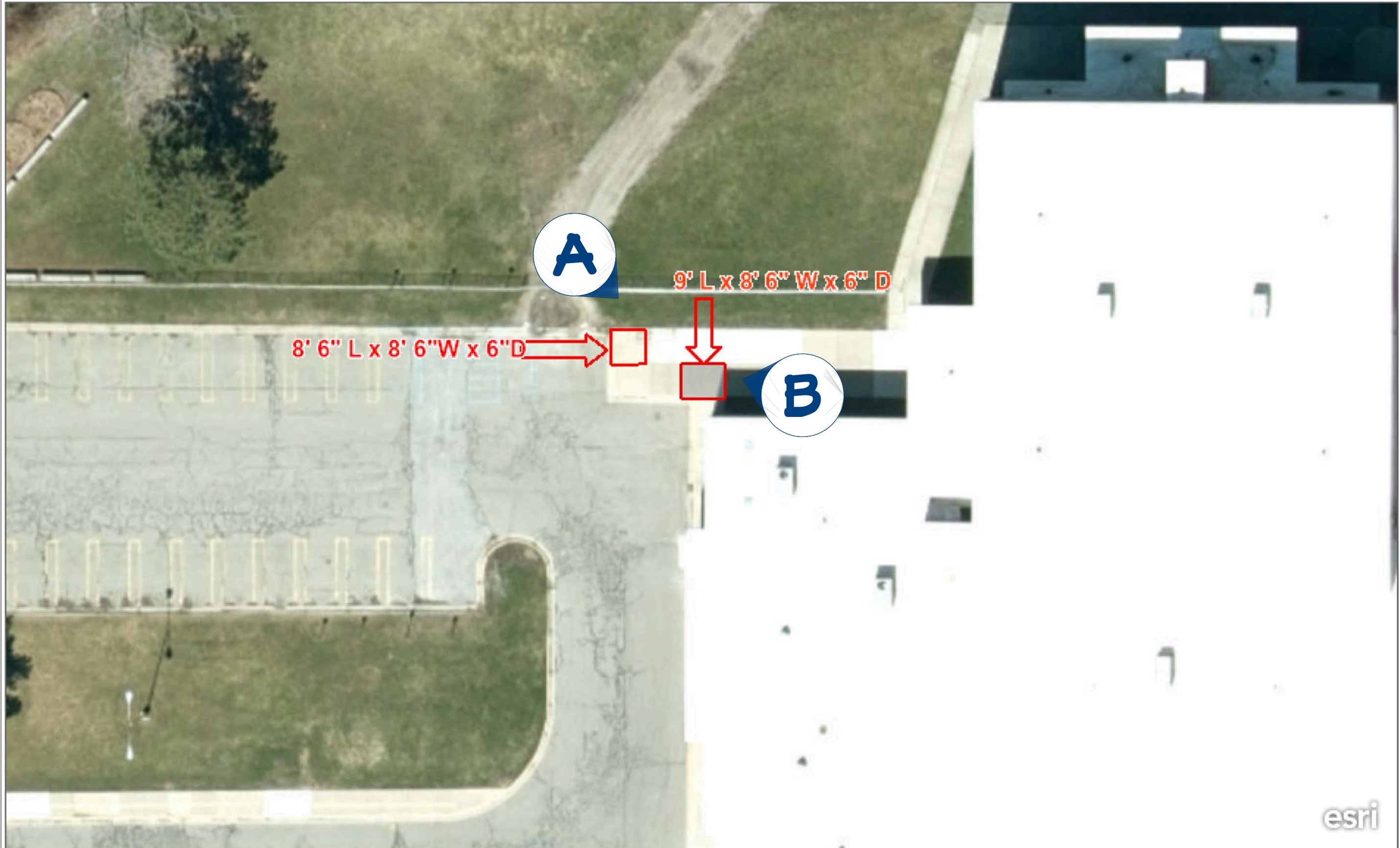
DRAWINGS PROVIDED BY:
MIDLAND PUBLIC SCHOOLS
FACILITIES DEPARTMENT
989-923-5035

DATE: 3/5/2026

SCALE:

SHEET: **P-15**

Concrete Repair 2025



NUMBER	DATE	REVISION	TABLE	DESCRIPTION

JEFFERSON MIDDLE
SCHOOL
CONCRETE WORK

DRAWINGS PROVIDED BY:
MIDLAND PUBLIC SCHOOLS
FACILITIES DEPARTMENT
989-923-5035

DATE:

3/5/2026

SCALE:

SHEET:

P-16





REVISION TABLE	
NUMBER	DATE

JEFFERSON MIDDLE
SCHOOL
CONCRETE WORK

DRAWINGS PROVIDED BY:
MIDLAND PUBLIC SCHOOLS
FACILITIES DEPARTMENT
989-923-5035

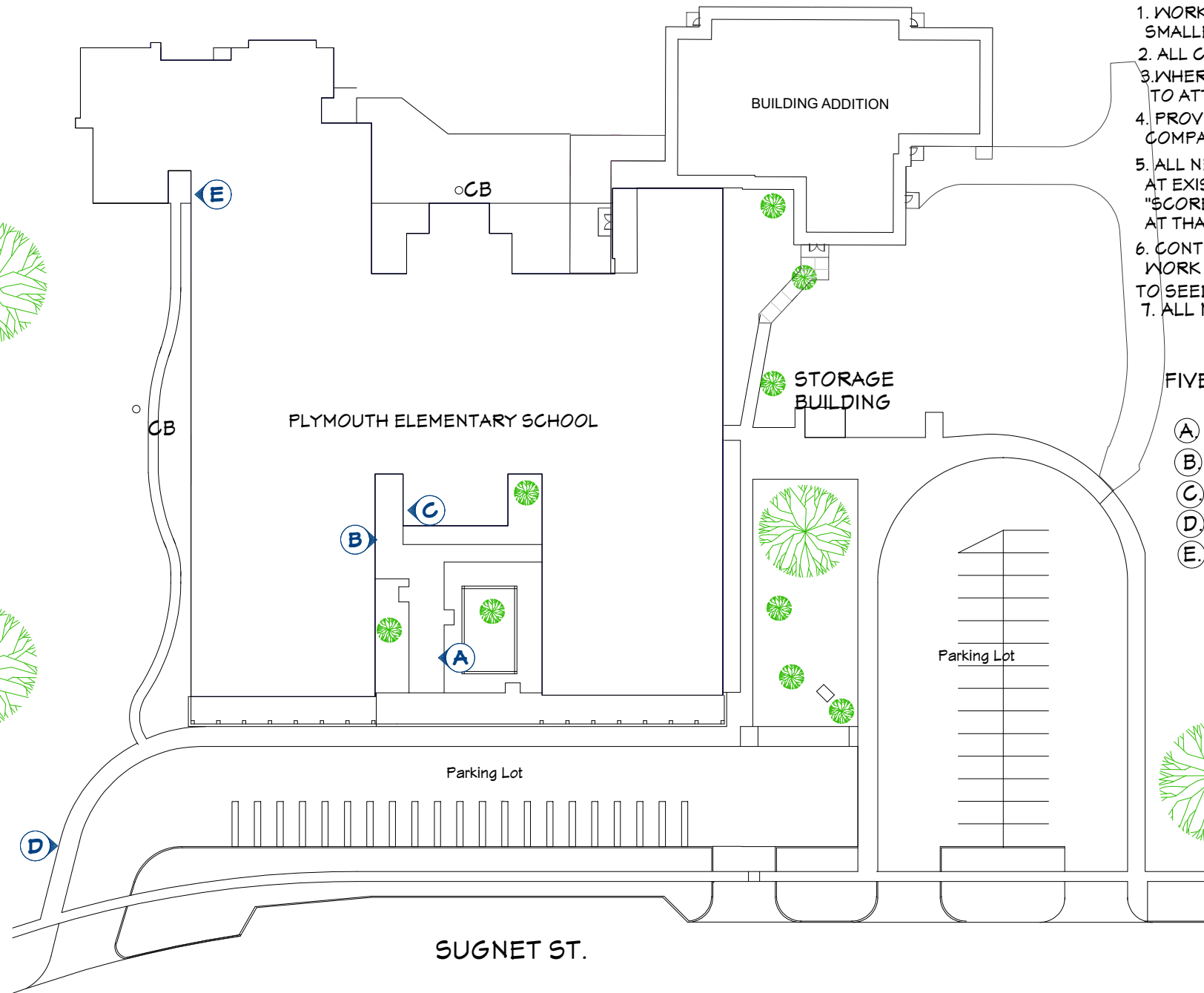
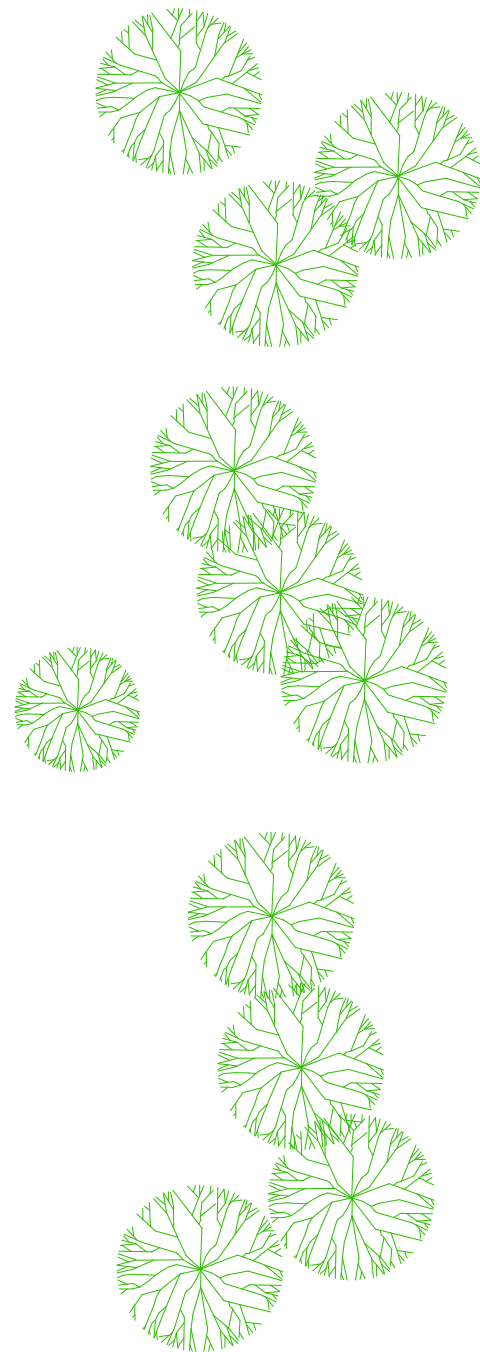
DATE:

3/5/2026

SCALE:

SHEET:

P-17



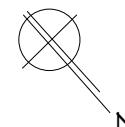
NOTES:

1. WORK TO INCLUDE SAW CUTTING WHERE NECESSARY TO REMOVE SMALLER SECTIONS THAT ARE WITHIN LARGER AREAS.
2. ALL CONCRETE AND SPOIL TO BE REMOVED FROM SITE.
3. WHERE NECESSARY PERFORM EXCAVATION OF SOIL AS REQUIRED TO ATTAIN PROPER DEPTH FOR CONCRETE THICKNESS.
4. PROVIDE CLEAN SANDFILL WHERE NECESSARY, INCLUDING COMPACTION, TO ATTAIN SUITABLE BASE.
5. ALL NEW CONCRETE SLABS TO INCLUDE EXPANSION JOINT MATERIAL AT EXISTING JOINTS THAT ARE BEING REPLACED WITH NEW. PROVIDE "SCORED" CONTROL JOINTS AT SPACING TO MATCH EXISTING SLAB AT THAT AREA.
6. CONTRACTOR TO INSTALL GRADED BACKFILL IN AREAS WHERE FORM WORK OR OTHER RELATED WORK CAUSES DEPRESSIONS. CONTRACTOR TO SEED.
7. ALL NEW CONCRETE TO BE 4000 PSI WITH MESH OR FIBER

FIVE AREAS OF REPLACEMENT AS FOLLOWS:

- (A) 7'L X 14'6"W X 4"D SECTION OF SIDEWALK
- (B) 7'6"L X 7'W X 4"D SECTION OF SIDEWALK
- (C) 15'L X 7'W X 4"D SECTION OF SIDEWALK
- (D) 15'L X 8'W X 6"D SECTION OF SIDEWALK
- (E) 15'L X 10'W X 4"D SECTION OF SIDEWALK

SITE PLAN



REVISION TABLE	NUMBER	DATE	REVISED BY	DESCRIPTION

PLYMOUTH ELEMENTARY SCHOOL
CONCRETE WORK

DRAWINGS PROVIDED BY:
MIDLAND PUBLIC SCHOOLS
FACILITIES DEPARTMENT
 989-923-5035

DATE:

3/5/2026

SCALE:

SHEET:

P-18



--	--

REVISION TABLE	NUMBER	DATE	REVISOR	DESCRIPTION

PLYMOUTH ELEMENTARY
SCHOOL
CONCRETE WORK

DRAWINGS PROVIDED BY:
MIDLAND PUBLIC SCHOOLS
FACILITIES DEPARTMENT
989-923-5035

DATE:

3/5/2026

SCALE:

SHEET:

P-19



A



B



C



D

REVISION TABLE	
NUMBER	DATE

**PLYMOUTH ELEMENTARY
SCHOOL
CONCRETE WORK**

DRAWINGS PROVIDED BY:
**MIDLAND PUBLIC SCHOOLS
FACILITIES DEPARTMENT
989-923-5035**

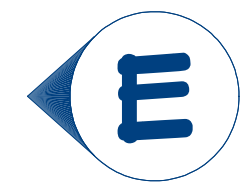
DATE:

3/5/2026

SCALE:

SHEET:

P-20



DRAWINGS PROVIDED BY:
MIDLAND PUBLIC SCHOOLS
FACILITIES DEPARTMENT
989-923-5035

DATE:

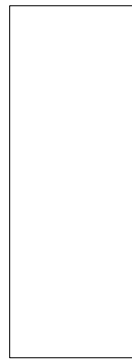
3/5/2026

SCALE:

SHEET:

P-21

PLYMOUTH ELEMENTARY
SCHOOL
CONCRETE WORK



REVISION TABLE	NUMBER	DATE	REVISED BY	DESCRIPTION



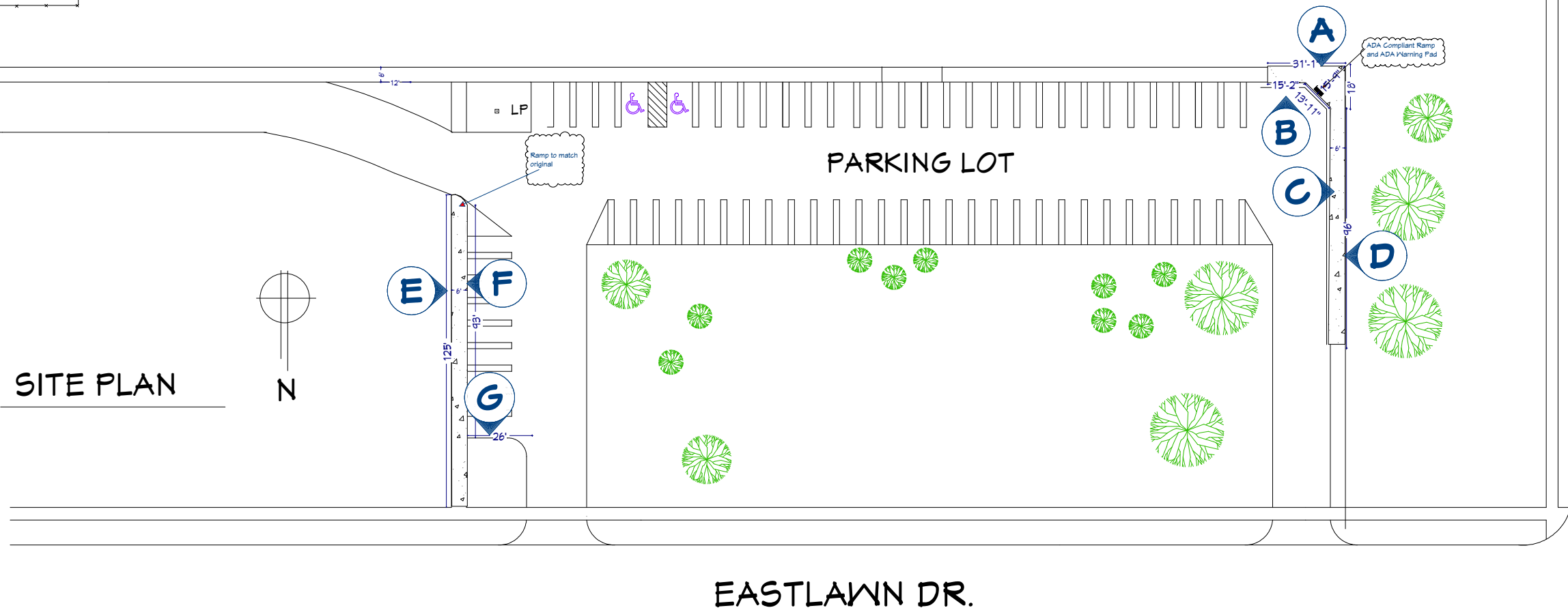
MHS
DRIVERS ED
RANGE

NOTES:

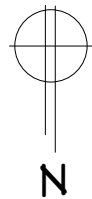
1. WORK TO INCLUDE SAW CUTTING WHERE NECESSARY TO REMOVE SMALLER SECTIONS THAT ARE WITHIN LARGER AREAS.
2. ALL CONCRETE AND SPOIL TO BE REMOVED FROM SITE.
3. WHERE NECESSARY PERFORM EXCAVATION OF SOIL AS REQUIRED TO ATTAIN PROPER DEPTH FOR CONCRETE THICKNESS.
4. PROVIDE CLEAN SANDFILL WHERE NECESSARY, INCLUDING COMPACTION, TO ATTAIN SUITABLE BASE.
5. ALL NEW CONCRETE SLABS TO INCLUDE EXPANSION JOINT MATERIAL AT EXISTING JOINTS THAT ARE BEING REPLACED WITH NEW. PROVIDE "SCORED" CONTROL JOINTS AT SPACING TO MATCH EXISTING SLAB AT THAT AREA.
6. CONTRACTOR TO INSTALL GRADED BACKFILL IN AREAS WHERE FORM WORK OR OTHER RELATED WORK CAUSES DEPRESSIONS, AND SEED AFFECTED AREAS.
7. ALL NEW CONCRETE TO BE 4000 PSI WITH MESH OR FIBER

FIVE AREAS OF SIDEWALK REPLACEMENT AS FOLLOWS:

- (A) Replace 325 Sq/ft OF SIDEWALK INCLUDING ADA RAMP AND
- (B) REPLACE 14' OF CURB
- (C) REPLACE 96' OF CURBING WITH MOUNTABLE CURBS
- (D) REPLACE A 96'L X 6'W X 4"D SECTION OF SIDEWALK
- (E) REPLACE A 125'L X 6'W X 4"D SECTION OF SIDEWALK
- (F) REPLACE 93' OF CURBING WITH MOUNTABLE CURBS
- (G) REPLACE 26' OF CURBING WITH MOUNTABLE CURBS



SITE PLAN



REVISION TABLE	NUMBER	DATE	REVISION BY	DESCRIPTION

MIDLAND HIGH SCHOOL
CONCRETE WORK

DRAWINGS PROVIDED BY:
MIDLAND PUBLIC SCHOOLS
FACILITIES DEPARTMENT
989-923-5035

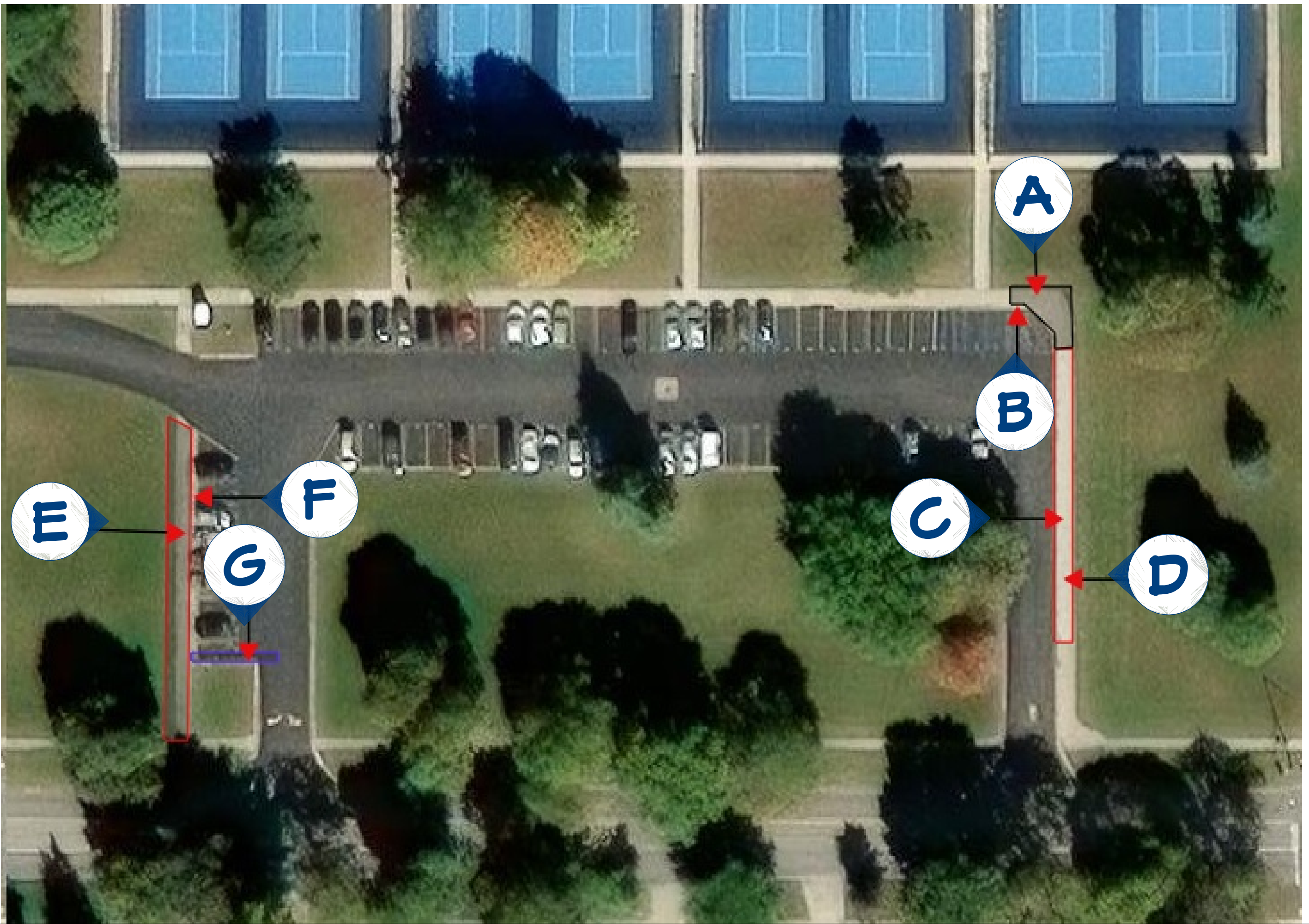
DATE:

3/5/2026

SCALE:

SHEET:

P-22



REVISION TABLE	NUMBER	DATE	REVISED BY	DESCRIPTION

**MIDLAND HIGH SCHOOL
CONCRETE WORK**

DRAWINGS PROVIDED BY:
**MIDLAND PUBLIC SCHOOLS
FACILITIES DEPARTMENT**
989-923-5035

DATE:
3/5/2026

SCALE:

SHEET:
P-23



A



B



C

D

REVISION TABLE	
NUMBER	DATE

**MIDLAND HIGH SCHOOL
CONCRETE WORK**

DRAWINGS PROVIDED BY:
**MIDLAND PUBLIC SCHOOLS
FACILITIES DEPARTMENT
989-923-5035**

DATE:

3/5/2026

SCALE:

SHEET:

P-24



REVISION TABLE	
NUMBER	DATE

**MIDLAND HIGH SCHOOL
CONCRETE WORK**

DRAWINGS PROVIDED BY:
**MIDLAND PUBLIC SCHOOLS
FACILITIES DEPARTMENT
989-923-5035**

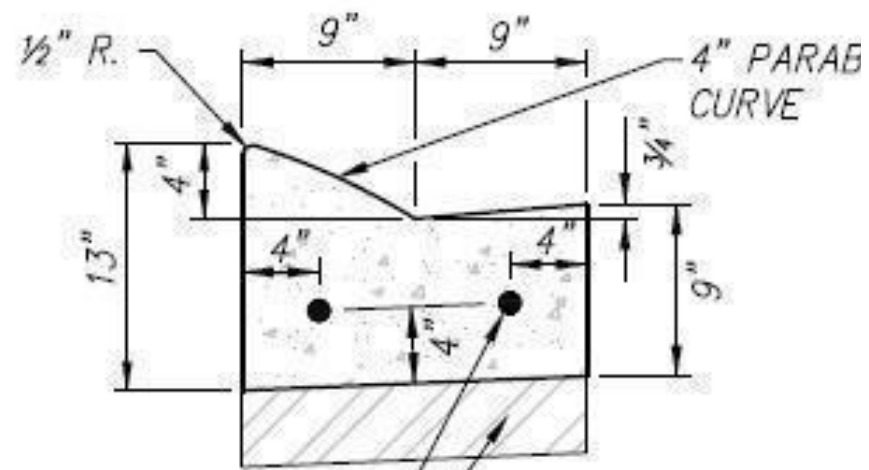
DATE:

3/5/2026

SCALE:

SHEET:

P-25

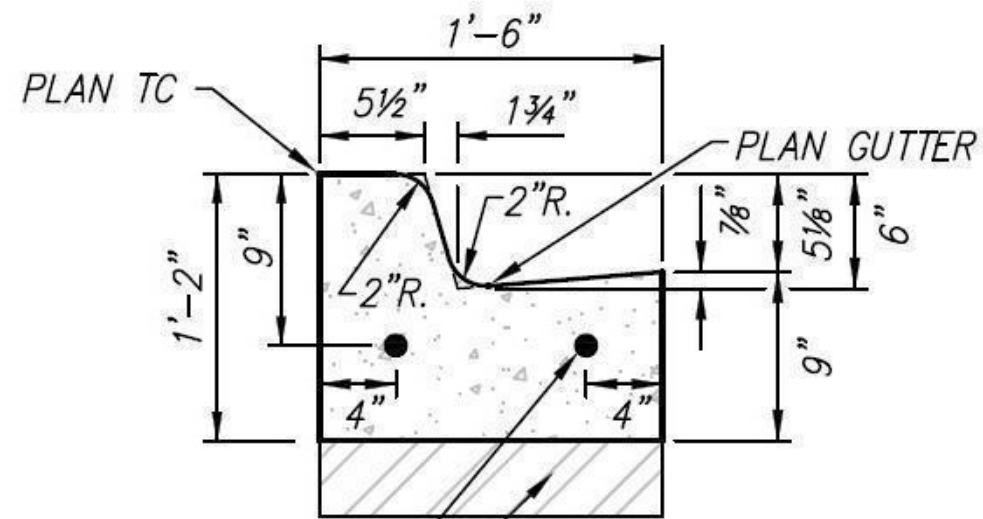


EPOXY COATED #4 BAR (TYP)
4" LIMESTONE AGG. BASE, 21AA

DETAIL
4" MOUNTABLE CURB & GUTTER STANDARD PAN

A
P-22

Attic



EPOXY COATED #4 BAR (TYP)
4" LIMESTONE AGG. BASE, 21AA

DETAIL
6" CURB & GUTTER STANDARD PAN
(MDOT TYPE F1)

C, F, G
P-22

REVISION TABLE	NUMBER	DATE	REVISION BY	DESCRIPTION

MIDLAND HIGH SCHOOL
CONCRETE WORK

DRAWINGS PROVIDED BY:
MIDLAND PUBLIC SCHOOLS
FACILITIES DEPARTMENT
989-923-5035

DATE:

3/5/2026

SCALE:

SHEET:

P-26