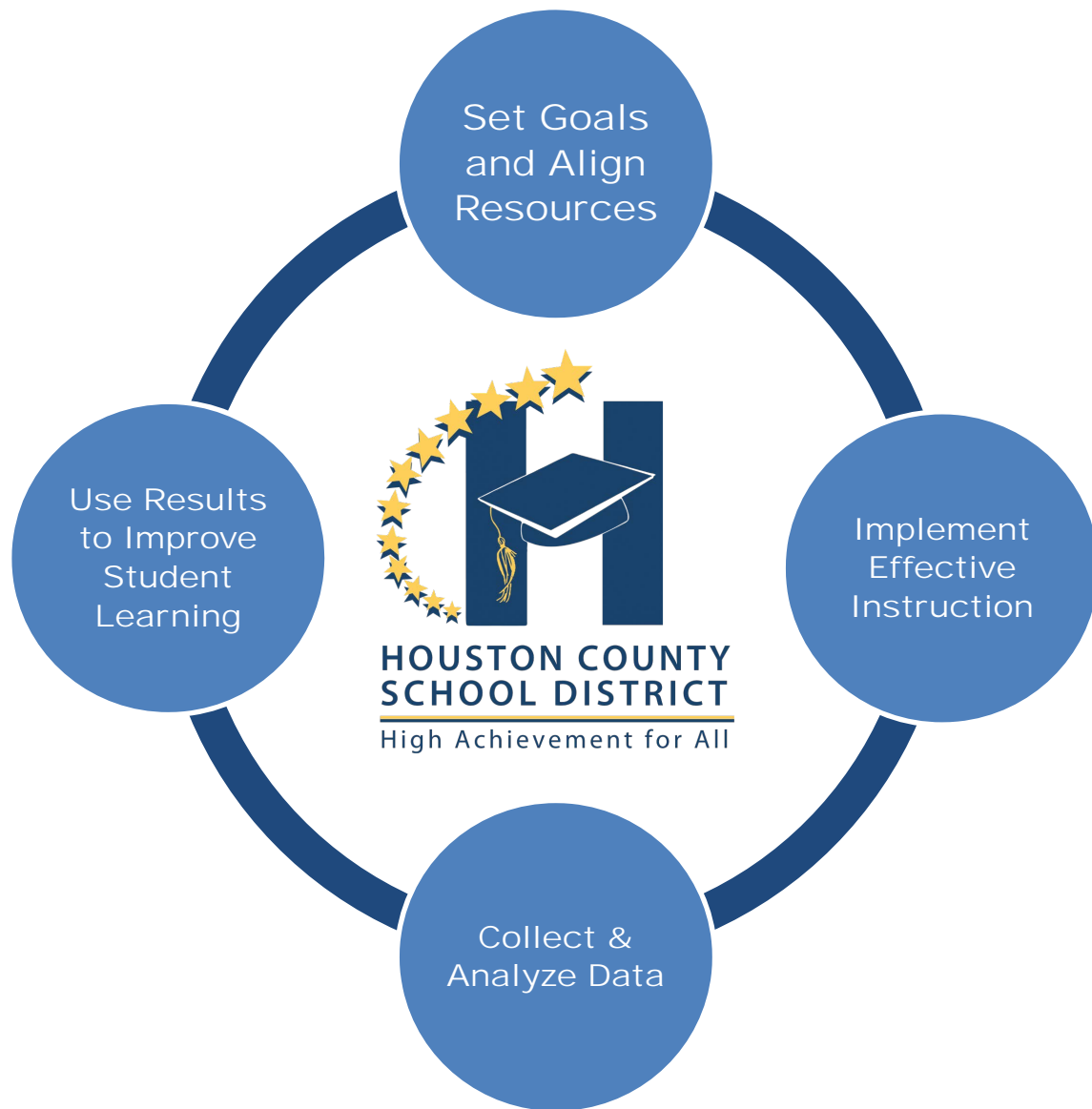


Houston County Board of Education



Student Performance Data Document



SUPERINTENDENT OF SCHOOLS DR. MARK SCOTT

Our Mission:

To produce high achievement for all through continuous growth.

Our Vision:

To be the standard for world-class education.

Our Values:

- ✦ Prioritize the safety and well-being of all.
- ✦ Produce college and career ready graduates.
- ✦ Promote the academic success of all students. All means all!
- ✦ Ensure the academic, behavioral, and social-emotional growth of students through a Multi-Tiered System of Supports.
- ✦ Support quality learning, by student, by standard.
- ✦ Take collective responsibility for teaching, learning, and professional development through professional learning communities.
- ✦ Use evidence-based, high-leverage practices to meet the needs of all students.
- ✦ Create partnerships with stakeholders that promote positive relationships and student success.

The Houston County Way:

- ✦ Strive for excellence in all that we do.
- ✦ Have a professional attitude.
- ✦ Go the extra mile.
- ✦ Base decisions on what is best for students.
- ✦ Provide quality customer service.
- ✦ Work hard, with dedication and love for students.
- ✦ Approach work every day with a positive attitude, hope, enthusiasm and compassion.
- ✦ Do things right; do the right thing.

Free and Reduced Meal Eligibility Report
System Report PreK - 12
October 31, 2023

School	Code	CEP	FTE	Free + Red.	Total F/R %
Bonaire Elementary School	1050	None	576	223	38.72%
Bonaire Middle School	296	None	1,134	451	39.77%
Bonaire Primary School	401	None	603	254	42.12%
C. B. Watson Primary School	102	CEP	573	573	100.00%
Centerville Elementary School	2050	CEP	632	400	63.29%
David A. Perdue Elementary School	194	None	641	377	58.81%
David A. Perdue Primary School	104	None	678	420	61.95%
Eagle Springs Elementary School	100	None	689	515	74.75%
Feagin Mill Middle School	196	None	943	493	52.28%
Hilltop Elementary School	309	None	591	353	59.73%
Houston County High School	192	None	2,116	935	44.19%
Huntington Middle School	105	CEP	831	757	91.10%
Kings Chapel Elementary School	3550	None	655	281	42.90%
Lake Joy Elementary School	208	None	651	331	50.84%
Lake Joy Primary School	103	None	625	333	53.28%
Langston Road Elementary School	117	None	423	228	53.90%
Langston Road Primary School	402	None	523	339	64.82%
Matthew Arthur Elementary School	199	None	882	362	41.04%
Miller Elementary School	5050	CEP	504	497	98.61%
Morningside Elementary School	2054	CEP	484	436	90.08%
Mossy Creek Middle School	108	None	770	346	44.94%
Northside Elementary School	191	CEP	571	571	100.00%
Northside High School	2052	CEP	1,935	1316	68.01%
Northside Middle School	1052	CEP	838	838	100.00%
Parkwood Elementary School	3052	CEP	706	706	100.00%
Pearl Stephens Elementary School	175	CEP	439	439	100.00%
Perry High School	1054	None	1,584	885	55.87%
Perry Middle School	200	None	1,119	683	61.04%
Quail Run Elementary School	195	None	656	422	64.33%
Russell Elementary School	4054	CEP	592	462	78.04%
Shirley Hills Elementary School	5054	CEP	547	403	73.67%
Thomson Middle School	204	CEP	717	380	53.00%
Tucker Elementary School	3056	CEP	493	316	64.10%
Veterans High School	111	None	1,937	795	41.04%
Warner Robins High School	4056	CEP	1,815	1332	73.39%
Warner Robins Middle School	5056	CEP	796	606	76.13%
Westside Elementary School	2058	CEP	557	557	100.00%
System Total			30,826	19,615	63.63%



4-Year Cohort Graduation Rate 2017-2024

Schools	2017	2018	2019	2020	2021	2022	2023	2024
Houston County High School	94.66	93.86	94.82	98.06	95.69	95.40	95.19	95.96
Northside High School	88.39	87.05	87.02	90.93	80.88	79.95	75.78	84.88
Perry High School	92.74	87.27	92.05	93.40	90.38	93.83	90.96	89.97
Veterans High School	92.10	90.00	89.01	96.67	95.18	94.21	94.76	95.01
Warner Robins High School	81.05	85.99	85.11	87.88	88.56	87.77	83.33	89.79
Houston County	87.60	87.18	87.90	89.61	88.82	89.48	87.59	91.22
State of Georgia	80.60	81.60	82.00	83.80	83.70	84.10	84.40	85.40



System Domain Summary Report
GKIDS Readiness Check
 Fall 2023

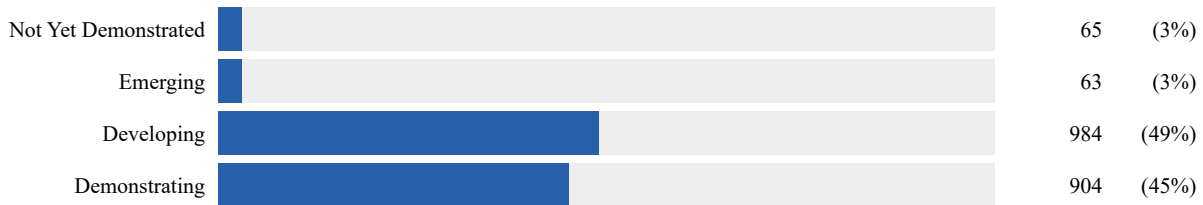


The GKIDS Readiness Check assesses 20 skills critical for kindergarten success. These skills represent three domains of learning: Foundations of School Success, English Language Arts, and Mathematics. This report provides a summary of overall kindergarten readiness across domains. Educators can use this information to track trends and measure progress and help ensure that every child in Georgia has the skills needed to be able to access the kindergarten curriculum.

Foundations of School Success



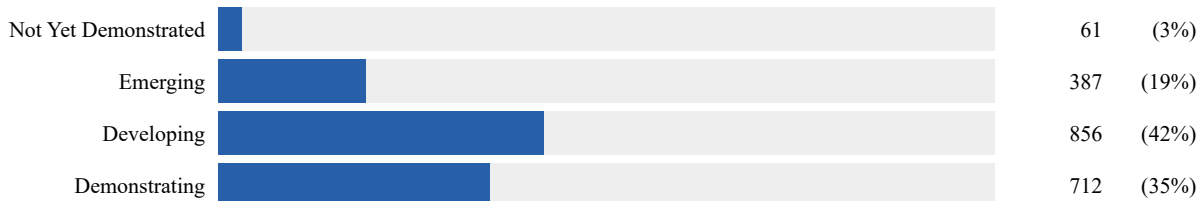
This domain includes children's approaches to learning, social and emotional development, and physical and motor skills development. These non-academic skills are indicators of children's development towards future academic success.



English Language Arts



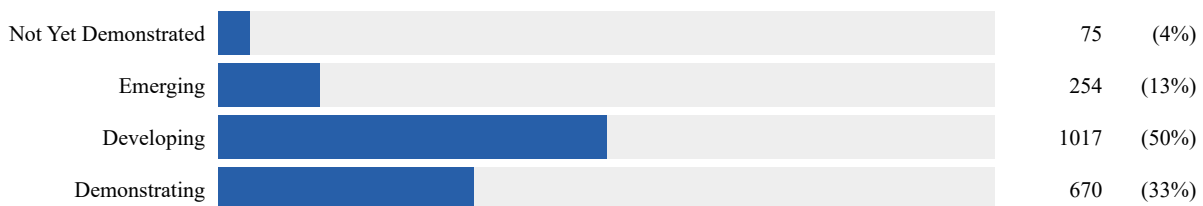
This domain includes children's early language and literacy development. These skills are the foundation for fluent and effective communication and literacy skills such as reading and writing.



Mathematics



This domain includes children's understanding of shapes and spatial relationships, problem solving, identifying similarities and differences, and basic numeracy concepts.



Not Yet Demonstrated	Emerging	Developing	Demonstrating
A student who has Not Yet Demonstrated readiness within a domain indicates minimal demonstration of foundational skills across assessed activities with continuous support and guidance from adults.	Emerging readiness within a domain indicates partial demonstration of foundational skills across assessed activities with frequent support and guidance from adults.	Developing readiness within a domain indicates general demonstration of foundational skills across assessed activities with occasional support and guidance from adults.	Demonstrating readiness within a domain indicates independent performance of foundational skills across assessed activities with little support and guidance from adults.

- Notes:
- Demonstrating: This category also includes the *Exceeding* performance level, where applicable.



**System Summary Report
 GKIDS Readiness Check
 Fall 2023**



NYA Not Yet Assessed
 NYD Not Yet Demonstrated
 EM Emerging
 DV Developing
 DM Demonstrating
 EX Exceeding

"--" indicates performance level not applicable

Foundations of School Success

Knowledge and Skills (7 Activities)	NYA	NYD	EM	DV	DM	EX
Makes statements and appropriately answers questions about how objects/materials can be used to solve problems.	1%	12%	14%	26%	48%	--
Engages in independent activities and continues tasks over a period of time.	1%	5%	15%	31%	48%	--
Uses senses to observe, classify, and learn about objects and environment.	1%	9%	--	34%	56%	--
Performs fine motor tasks that require small muscle strength and control.	1%	5%	--	40%	55%	--
Effectively uses words, sentences and actions to communicate needs, ideas, opinions and preferences.	1%	5%	--	23%	71%	--
Independently follows rules and routines.	1%	8%	--	41%	50%	--
Plays cooperatively with a few peers for a sustained period of time.	1%	5%	--	27%	68%	--

English Language Arts

Knowledge and Skills (8 Activities)	NYA	NYD	EM	DV	DM	EX
Listens and differentiates between sounds that are the same and different.	1%	8%	9%	24%	58%	--
Recognizes and names some upper case letters of the alphabet.	1%	6%	12%	12%	19%	50%
Recognizes and names some lowercase letters of the alphabet.	1%	8%	11%	13%	20%	47%
Tracks words from left to right, top to bottom, and page to page.	1%	22%	20%	23%	35%	--
Draws pictures and copies letters and/or numbers to communicate.	1%	11%	--	34%	54%	--
Listens to and follows multi-step directions.	1%	5%	17%	32%	45%	--
Uses spoken language that can be understood with ease.	1%	2%	7%	18%	73%	--
Uses writing tools.	1%	3%	--	31%	66%	--

Mathematics

Knowledge and Skills (5 Activities)	NYA	NYD	EM	DV	DM	EX
Recites numbers up to 20 in sequence.	1%	6%	10%	23%	60%	--
Counts at least 10 objects using one-to-one correspondence.	1%	5%	9%	7%	33%	46%
Recognizes numerals.	1%	6%	9%	19%	66%	--
Sorts and classifies objects using one or more attributes or relationships.	1%	16%	38%	21%	24%	--
Recognizes and names common two-dimensional shapes.	1%	5%	21%	19%	54%	--



**System Summary Report
 GKIDS Academic Progressions
 Spring 2024**



NYA Not Yet Assessed
 NYD Not Yet Demonstrated
 PC Precursor
 BE Beginning
 EM Emerging
 DV Developing
 DM Demonstrating
 EX Exceeding

"--" indicates performance level not applicable

English Language Arts

Learning Progressions	NYA	NYD	PC	BE	EM	DV	DM	EX
Phonemic Awareness	0%	4%	3%	4%	4%	9%	43%	33%
Phonics	0%	3%	--	4%	5%	11%	51%	26%
High-Frequency Words	0%	7%	--	6%	8%	14%	38%	26%
Comprehension	0%	3%	3%	4%	8%	16%	47%	19%
Conventions of Writing	0%	3%	2%	4%	10%	22%	45%	14%
Spelling	0%	4%	--	5%	9%	18%	48%	16%
Communication of Ideas	0%	3%	3%	5%	10%	17%	49%	12%

Mathematics

Learning Progressions	NYA	NYD	BE	EM	DV	DM	EX
Counting & Cardinality	0%	2%	2%	6%	11%	64%	15%
Count Sequences	0%	4%	3%	6%	11%	54%	22%
Written Numerals & Comparison of Quantities	0%	3%	3%	4%	11%	58%	20%
Addition & Subtraction	0%	6%	4%	7%	19%	54%	10%
Patterns & Passage of Time	0%	4%	5%	6%	14%	59%	12%
Comparison & Classification of Objects	0%	3%	6%	9%	16%	56%	11%
Shapes & Positional Language	0%	3%	7%	11%	15%	53%	10%

Science

Learning Progressions	NYA	NYD	BE	EM	DV	DM	EX
Physical Attributes	97%	1%	1%	0%	0%	1%	0%
Motion	98%	0%	1%	0%	1%	1%	0%
Life Science	98%	1%	0%	0%	0%	1%	0%
Space Science	98%	1%	0%	0%	1%	1%	0%
Earth Materials	98%	1%	0%	0%	0%	1%	0%

Social Studies

Learning Progressions	NYA	NYD	BE	EM	DV	DM	EX
Historical Understandings	98%	1%	0%	0%	1%	0%	0%
Geographic Understandings	98%	0%	0%	0%	1%	1%	0%
Civic Understandings	98%	0%	1%	0%	1%	1%	0%
Economic Understandings	98%	1%	0%	0%	0%	1%	0%



**System Summary Report
 GKIDS Non-Academic Progressions
 Spring 2024**



NYA
 Not Yet Assessed
 NYD
 Not Yet Demonstrated
 BE
 Beginning
 DV
 Developing
 DM
 Demonstrating

"--" indicates performance level not applicable

Approaches to Learning

Learning Progressions	NYA	NYD	BE	DV	DM
Curiosity and Initiative	0%	2%	6%	18%	74%
Creativity and Problem-Solving	0%	2%	8%	21%	69%
Attention, Engagement, and Persistence	0%	3%	8%	25%	64%

Personal and Social Development

Learning Progressions	NYA	NYD	BE	DV	DM
Personal Development and Social Regulation	0%	2%	6%	19%	73%
Social Development/Classroom Interactions	0%	2%	5%	19%	74%

Motor Skills

Learning Progressions	NYA	NYD	BE	DV	DM
Gross Motor Skills	50%	1%	1%	4%	44%
Fine Motor Skills	49%	1%	3%	7%	41%

MAP Growth Spring 2024

Fall to Spring

Grade	Reading		Math	
	Achievement Percentile	Conditional Growth Percentile	Achievement Percentile	Conditional Growth Percentile
1	72	74	85	98
2	66	88	69	97
3	62	85	64	77
4	65	78	65	77
5	68	71	57	37
6	58	28	48	30
7	68	54	58	70
8	63	58	58	62
9	64	64	65	68
10	70	75	70	82

ACCESS for ELLs English Language Proficiency Test 2014-2024

Grades K-5

Proficiency Level Overall Score	Kindergarten					First Grade					Second Grade					Third Grade					Fourth Grade					Fifth Grade				
	2019	2021	2022	2023	2024	2019	2021	2022	2023	2024	2019	2021	2022	2023	2024	2019	2021	2022	2023	2024	2019	2021	2022	2023	2024	2019	2021	2022	2023	2024
1- Entering	39%	55%	61%	50%	64%	10%	14%	16%	15%	25%	7%	6%	9%	9%	11%	7%	6%	6%	6%	13%	8%	2%	6%	3%	10%	9%	5%	4%	8%	16%
2- Emerging	25%	23%	17%	21%	17%	22%	31%	36%	33%	25%	21%	21%	22%	15%	23%	13%	11%	14%	15%	18%	4%	5%	4%	5%	12%	2%	9%	4%	10%	7%
3- Developing	16%	15%	11%	16%	10%	53%	41%	37%	41%	41%	48%	41%	51%	54%	42%	37%	44%	48%	44%	34%	24%	33%	32%	27%	23%	30%	24%	30%	18%	25%
4- Expanding	16%	8%	9%	12%	9%	11%	11%	10%	9%	8%	22%	29%	16%	16%	23%	36%	34%	25%	32%	32%	52%	41%	47%	43%	39%	43%	47%	53%	47%	42%
5- Bridging	3%	0%	1%	0%	1%	3%	2%	1%	2%	2%	2%	2%	1%	3%	1%	6%	4%	5%	2%	3%	10%	18%	19%	17%	14%	13%	13%	7%	17%	6%
6- Reaching	0%	0%	0%	0%	0%	1%	0%	0%	0%	0%	0%	0%	0%	0%	0%	1%	0%	0%	0%	0%	1%	2%	1%	3%	2%	2%	2%	3%	0%	1%
Number tested	122	80	96	121	127	140	128	105	119	133	124	145	131	116	128	108	124	131	126	119	115	111	118	128	112	53	86	76	89	95

ACCESS for ELLs English Language Proficiency Test 2014-2024

Grades 6-8

Proficiency Level Overall Score	Sixth Grade					Seventh Grade					Eighth Grade				
	2019	2021	2022	2023	2024	2019	2021	2022	2023	2024	2019	2021	2022	2023	2024
1- Entering	24%	12%	12%	8%	19%	22%	11%	13%	17%	17%	31%	20%	23%	18%	30%
2- Emerging	26%	11%	5%	27%	29%	22%	4%	9%	13%	17%	21%	25%	4%	14%	17%
3- Developing	37%	57%	50%	56%	42%	31%	57%	44%	41%	49%	33%	38%	48%	42%	30%
4- Expanding	13%	16%	33%	8%	10%	24%	26%	31%	27%	16%	10%	10%	23%	24%	23%
5- Bridging	0%	4%	0%	2%	0%	0%	2%	3%	1%	0%	3%	8%	2%	1%	0%
6- Reaching	0%	0%	0%	0%	0%	0%	0%	0%	0%	0%	0%	0%	0%	0%	0%
Number tested	38	74	60	63	79	49	53	75	75	81	39	40	56	76	83

ACCESS for ELLs English Language Proficiency Test 2014-2024

Grades 9-12

Proficiency Level Overall Score	Ninth Grade					Tenth Grade					Eleventh Grade					Twelfth Grade				
	2019	2021	2022	2023	2024	2019	2021	2022	2023	2024	2019	2021	2022	2023	2024	2019	2021	2022	2023	2024
1- Entering	24%	10%	36%	28%	28%	8%	10%	7%	21%	16%	12%	0%	9%	15%	19%	0%	0%	0%	10%	17%
2- Emerging	18%	16%	16%	28%	17%	6%	14%	17%	10%	34%	9%	21%	31%	23%	19%	9%	5%	19%	40%	25%
3- Developing	33%	37%	27%	27%	43%	56%	42%	55%	51%	38%	52%	32%	37%	46%	48%	36%	55%	38%	40%	29%
4- Expanding	22%	24%	20%	14%	12%	28%	20%	14%	15%	11%	21%	42%	20%	15%	13%	55%	35%	44%	7%	29%
5- Bridging	0%	14%	2%	3%	0%	3%	10%	3%	3%	0%	6%	5%	3%	0%	0%	0%	5%	0%	3%	0%
6- Reaching	0%	0%	0%	0%	0%	0%	4%	0%	0%	0%	0%	0%	0%	0%	0%	0%	0%	0%	0%	0%
Number tested	45	51	64	74	105	36	50	29	39	56	33	19	35	26	31	11	20	16	30	24

2024 GAA

Content Areas by Grade Levels 3 and 4

Grade	ELA									
	2019		2021		2022		2023		2024	
	System	State	System	State	System	State	System	State	System	State
3	77%	66%	82%	62%	85%	63%	78%	68%	76%	61%
4	72%	65%	79%	66%	73%	65%	79%	69%	80%	65%
5	84%	65%	84%	68%	67%	66%	66%	66%	76%	65%
6	85%	68%	89%	72%	84%	71%	83%	72%	59%	67%
7	87%	71%	80%	77%	81%	73%	81%	76%	75%	69%
8	88%	78%	89%	83%	92%	85%	90%	86%	86%	87%
HS	90%	70%	88%	72%	83%	68%	89%	70%	86%	75%

2024 GAA

Content Areas by Grade Levels 3 and 4

Grade	Math									
	2019		2021		2022		2023		2024	
	System	State	System	State	System	State	System	State	System	State
3	81%	67%	79%	67%	78%	62%	73%	69%	62%	67%
4	68%	57%	79%	59%	73%	56%	77%	59%	70%	62%
5	80%	59%	79%	66%	60%	59%	71%	62%	88%	63%
6	85%	63%	78%	66%	78%	66%	74%	64%	55%	60%
7	85%	59%	82%	63%	69%	64%	74%	64%	65%	58%
8	87%	63%	83%	66%	76%	67%	77%	67%	70%	68%
HS	86%	65%	79%	67%	87%	70%	82%	69%	86%	70%

2024 GAA

Content Areas by Grade Levels 3 and 4

Grade	Science									
	2019		2021		2022		2023		2024	
	System	State	System	State	System	State	System	State	System	State
3	-	-	-	-	-	-	-	-	-	-
4	-	-	-	-	-	-	-	-	-	-
5	87%	62%	81%	67%	68%	60%	66%	61%	74%	64%
6	-	-	-	-	-	-	-	-	-	-
7	-	-	-	-	-	-	-	-	-	-
8	86%	62%	73%	63%	75%	66%	71%	63%	64%	59%
HS	79%	67%	85%	72%	83%	64%	87%	65%	82%	64%

2024 GAA

Content Areas by Grade Levels 3 and 4

Grade	Social Studies									
	2019		2021		2022		2023		2024	
	System	State	System	State	System	State	System	State	System	State
3	-	-	-	-	-	-	-	-	-	-
4	-	-	-	-	-	-	-	-	-	-
5	84%	71%	-	-	-	-	-	-	-	-
6	-	-	-	-	-	-	-	-	-	-
7	-	-	-	-	-	-	-	-	-	-
8	90%	70%	81%	73%	71%	70%	73%	70%	74%	70%
HS	79%	73%	88%	76%	85%	72%	89%	75%	84%	74%

2024 EOG System and State

Grade	System/ State	Reading	ELA		Math		Science		Physical Science		SS	
		Grade Level or Above	% at Levels 2, 3, 4	% at Levels 3, 4	% at Levels 2, 3, 4	% at Levels 3, 4	% at Levels 2, 3, 4	% at Levels 3, 4	% at Levels 2, 3, 4	% at Levels 3, 4	% at Levels 2, 3, 4	% at Levels 3, 4
Grade 3	System	72%	71%	45%	87%	53%						
	State	64%	64%	38%	81%	45%						
Grade 4	System	64%	77%	46%	88%	56%						
	State	56%	68%	37%	81%	48%						
Grade 5	System	83%	86%	61%	80%	47%	72%	47%				
	State	72%	76%	48%	73%	41%	64%	42%				
Grade 6	System	64%	75%	47%	79%	41%						
	State	59%	69%	42%	73%	35%						
Grade 7	System	75%	77%	46%	80%	42%						
	State	68%	69%	40%	74%	38%						
Grade 8	System	81%	88%	55%	87%	52%	66%	35%	99%	86%	80%	44%
	State	72%	79%	45%	78%	44%	51%	26%	74%	51%	72%	37%

EOG/EOC 2024

Grade		Reading				ELA							
		2021	2022	2023	2024	2021		2022		2023		2024	
		Reading Above GL				2, 3, 4	3 & 4	2, 3, 4	3 & 4	2, 3, 4	3 & 4	2, 3, 4	3 & 4
3	System	70%	73%	72%	72%	71%	44%	74%	46%	73%	45%	71%	45%
	State	62%	64%	66%	64%	62%	36%	63%	36%	64%	39%	64%	38%
4	System	67%	65%	67%	64%	76%	45%	78%	47%	79%	45%	77%	46%
	State	59%	56%	57%	56%	69%	37%	69%	38%	68%	36%	68%	37%
5	System	75%	76%	75%	83%	81%	48%	82%	49%	80%	47%	86%	61%
	State	68%	70%	69%	72%	73%	39%	75%	41%	73%	42%	76%	48%
6	System	63%	60%	61%	64%	75%	47%	75%	45%	73%	43%	75%	47%
	State	58%	55%	56%	59%	69%	42%	67%	39%	68%	39%	69%	42%
7	System	71%	73%	72%	75%	77%	44%	78%	42%	76%	43%	77%	46%
	State	67%	67%	69%	68%	70%	39%	70%	36%	70%	39%	69%	40%
8	System	76%	76%	78%	81%	84%	51%	84%	46%	83%	47%	88%	55%
	State	68%	70%	71%	72%	75%	41%	77%	41%	76%	42%	79%	45%
AM Lit	System	62%	71%	70%	70%	68%	31%	80%	42%	78%	39%	79%	46%
	State	55%	71%	69%	67%	62%	26%	79%	44%	75%	40%	75%	44%

EOG 2024

Grade		Math							
		2021		2022		2023		2024	
		2, 3, 4	3 & 4	2, 3, 4	3 & 4	2, 3, 4	3 & 4	2, 3, 4	3 & 4
3	System	85%	47%	89%	55%	87%	50%	87%	53%
	State	75%	38%	79%	43%	80%	46%	81%	45%
4	System	84%	53%	87%	56%	87%	56%	88%	56%
	State	75%	43%	77%	44%	77%	46%	81%	48%
5	System	80%	41%	80%	46%	77%	44%	80%	47%
	State	67%	35%	67%	37%	68%	37%	73%	41%
6	System	79%	42%	81%	39%	77%	39%	79%	41%
	State	69%	30%	67%	31%	70%	33%	73%	35%
7	System	81%	42%	84%	43%	81%	40%	80%	42%
	State	74%	36%	74%	35%	74%	35%	74%	38%
8	System	80%	44%	80%	42%	82%	46%	87%	52%
	State	67%	32%	70%	36%	71%	36%	78%	44%
Algebra	System	73%	38%	81%	47%	78%	44%	85%	59%
	State	61%	31%	69%	39%	67%	37%	72%	45%

EOG/EOC 2024

Grade									
		2021		2022		2023		2024	
		2, 3, 4	3 & 4	2, 3, 4	3 & 4	2, 3, 4	3 & 4	2, 3, 4	3 & 4
5 Science	System	74%	46%	74%	44%	71%	44%	72%	47%
	State	65%	38%	67%	39%	64%	40%	64%	42%
8 Science	System	70%	40%	72%	40%	67%	36%	66%	35%
	State	54%	27%	57%	29%	53%	26%	51%	26%
8 Social Studies	System	84%	46%	83%	47%	78%	41%	80%	44%
	State	74%	35%	73%	37%	71%	36%	72%	38%
Physical Science	System	99%	90%	100%	70%	99%	86%	99%	86%
	State	75%	53%	79%	53%	76%	52%	74%	51%
BIO	System	70%	43%	76%	53%	77%	51%	75%	51%
	State	68%	42%	72%	48%	72%	47%	72%	47%
US History	System	79%	46%	47%	19%	55%	17%	59%	22%
	State	65%	30%	69%	40%	73%	37%	73%	39%

Houston County EOC 2024

EOC	American Literature & Composition - All Students						Biology - All Students					
	1	2	3	4	2, 3, 4	3 & 4	1	2	3	4	2, 3, 4	3 & 4
Georgia	25.1%	30.9%	34.0%	10.0%	74.9%	43.9%	24.5%	24.6%	35.8%	15.1%	72.1%	46.6%
Houston County	21.5%	32.5%	37.2%	890.9%	78.5%	46.1%	27.9%	25.4%	34.0%	12.7%	75.5%	50.9%
EOC	United States History - All Students						Algebra CC - All Students					
	1	2	3	4	2, 3, 4	3 & 4	1	2	3	4	2, 3, 4	3 & 4
Georgia	27.1%	34.4%	29.5%	9.1%	72.9%	38.5%	28%	27%	27%	19%	72%	45%
Houston County	41.1%	36.7%	19.1%	3.1%	58.9%	22.2%	15%	25%	37%	23%	85%	59%
EOC	AM Lit Lexile Reading			AM Lit Reading & Vocabulary		Mean Score						
	Below 1185L		1185L-1385L		Above 1385L		Grade Level or Above		ELA	Biology	US History	Alg CC
Georgia	33%		27%		40%		67%		512	522	510	520
Houston County	30%		30%		40%		70%		516	529	487	537

System PSAT Fall 2023 10th Grade

Scores & Benchmarks - Houston County Schools - Test Taker(s) Total

	# of Testers	Score Distribution	Mean Total Score (320-1520) ⓘ
District	2,044		320 869 1520
State	101,257		320 870 1520
All Testers	1,522,197		320 899 1520

Benchmark Performance Types

Met Both Benchmarks
 Met One Benchmark
 Met No Benchmarks

	# of Testers	Benchmark Performance			Benchmark Distribution	
District	2,044	26%	24%	50%	0% 100%	
State	101,257	27%	25%	48%	0% 100%	
All Testers	1,522,197	33%	25%	41%	0% 100%	

System PSAT Fall 2023 10th Grade

Scores & Benchmarks - Houston County Schools - Test Taker(s)

Reading and Writing

	# of Testers	Score Distribution	Mean Reading and Writing Score (160-760) ⓘ
<u>District</u>	2,044		160 429 760
<u>State</u>	101,257		160 435 760
<u>All Testers</u>	1,522,197		160 452 760

Benchmark Performance Types


Met Both Benchmarks
 Met One Benchmark
 Met No Benchmarks

	# of Testers	Performance Levels			Benchmark Distribution	
<u>District</u>	2,044	46%	9%	45%	0%	100%
<u>State</u>	101,257	50%	7%	43%	0%	100%
<u>All Testers</u>	1,522,197	56%	7%	37%	0%	100%




System PSAT Fall 2023 10th Grade

Scores & Benchmarks - Houston County Schools - Test Taker(s)

Math

	# of Testers	Score Distribution	Mean Math Score (160-760) 
District	2,044		160 441
State	101,257		160 435
All Testers	1,522,197		160 446

Benchmark Performance Types

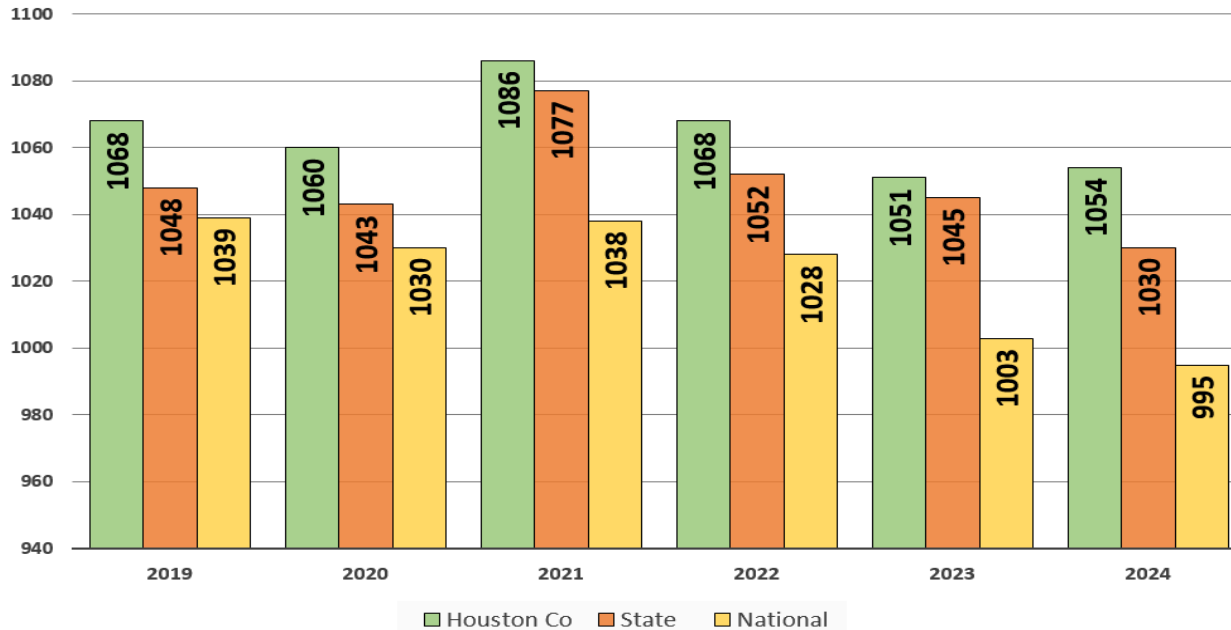
 Met Both Benchmarks
  Met One Benchmark
  Met No Benchmarks

	# of Testers	Performance Levels			Benchmark Distribution
					
District	2,044	30%	16%	54%	0% 100%
State	101,257	30%	13%	57%	0% 100%
All Testers	1,522,197	36%	13%	51%	0% 100%

2019-2024 SAT

(Public Schools)

School	SAT Test Takers						Total Score Mean						ERW Mean						Math Mean					
	2019	2020	2021	2022	2023	2024	2019	2020	2021	2022	2023	2024	2019	2020	2021	2022	2023	2024	2019	2020	2021	2022	2023	2024
Houston Co	984	953	645	886	873	887	1068	1060	1086	1068	1051	1054	539	537	550	543	536	537	528	523	536	525	515	517
State	67,594	64,047	41,976	56,898	56,141	60,749	1048	1043	1077	1052	1045	1030	533	532	546	536	534	527	515	511	531	516	511	503
National	1,859,215	1,849,197	1,251,753	1,450,575	1,608,613		1039	1030	1038	1028	1003	995	524	520	524	521	510	507	515	510	514	507	493	488



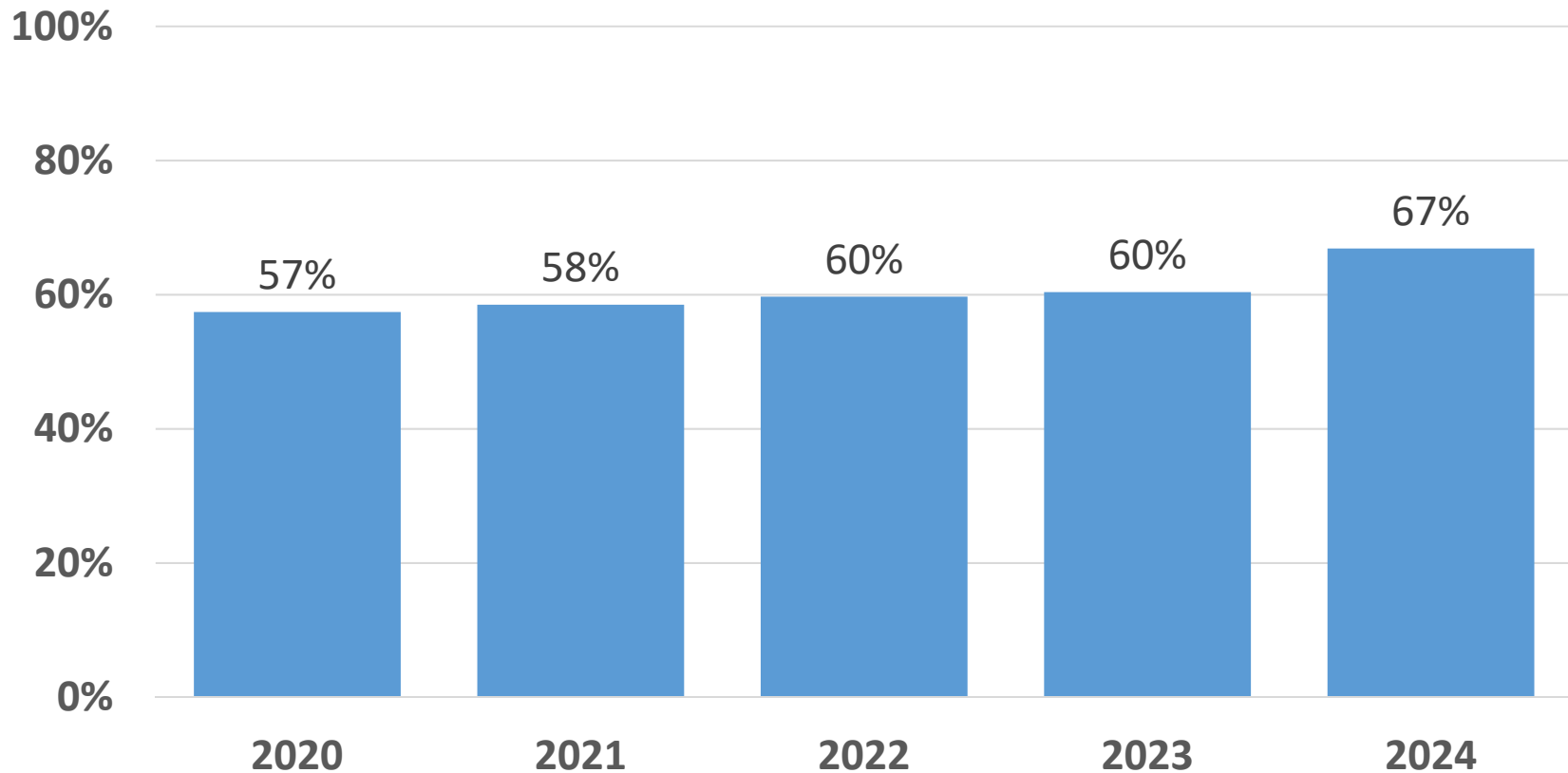
Houston County AP Trend 2020-2024

Five Year Score Summary

	2020	2021	2022	2023	2024
Total AP students	1166	1053	1421	1605	1729
Number of Exams Administered	2024	1836	2523	2875	3465
Number of Exams with Scores 3+	1162	1074	1506	1736	2317
% of Total AP Exams with Scores 3+	57%	58%	60%	60%	67%



% of Total AP Exams with Scores 3+



Five Year Trend Average Act Scores

Five Year Trends – Average ACT Scores

All scores are based on high school graduates who took the ACT at some time from grades 10 to 12 - Graduating Class 2024

Grad Year	Total Tested		English		Mathematics		Reading		Science		Composite	
	District	State	District	State	District	State	District	State	District	State	District	State
2019	643	53036	19.5	20.9	20.0	20.7	21.5	22.2	20.6	21.2	20.5	21.4
2020	505	45913	19.9	21.3	20.6	21.0	21.9	22.5	21.1	21.6	21.0	21.7
2021	310	29202	20.4	22.1	21.1	21.9	23.2	23.4	22.0	22.4	21.8	22.6
2022	361	35284	19.3	21.0	19.8	20.8	21.9	22.5	20.9	21.5	20.6	21.6
2023	277	34474	19.0	20.7	19.9	20.6	21.4	22.2	20.5	21.2	20.3	21.3
2024	268	33225	18.6	20.5	19.7	20.4	21.3	22.2	20.3	21.1	20.1	21.2

Figure 1.1. Average Composite Scores: 5 Years of Testing*

