



SAFE RETURN TO SCHOOL

2021-2022

Johnnie Vick, Superintendent

411 East Chestnut
Charleston, MS 38922
662-647-5244

Table of Contents

Section 1: Academic Programming	3
Section 2: Operations	7
Section 3: Family and Community Support	9
Section 4: Communications	10
Section 5: Health and Safety	11

Section 1: Academic Programming



1. How will the district ensure continuity of services for academic needs of students?

- Provide continuous professional development in the areas of reading, math, other content areas of need, best practices, MTSS, and social and emotional support.
- Review and modify 2021-2022 school year pacing to ensure acceleration and enrichment learning opportunities to address learning gaps from the 2020-2021 school year.
- Provide continuous students services and support through related service providers, to include, special education learners' teachers, contractual services and counselors.
- Ensure accountability of instruction and learning experiences through continuous monitoring of instruction and instructional practices and providing modeling and feedback if any and when necessary.
- Each instructor will provide high quality instruction with students sitting at a safe distance.
- Provide continuous professional development in the areas of reading, math, MTSS, and social and emotional support.
- Review and modify 2021-2022 school year pacing to ensure acceleration and enrichment tie to address learning gaps from 2020-2021
- Related services providers, including, diverse learner teachers, and the counselor will continue to provide student services.
- CHS will be implementing a 4x4 block schedule
- All schools will have qualified teachers in all subject areas
- All schools continue using district benchmark assessments for testing
- All schools continue to provide/offer professional development for teachers.



2. What is the school's plan for safely scheduling face-to-face instructional delivery students when school opens? (prioritized content, accelerated learning opportunities, intensive tutoring, after-school learning opportunities, etc.)



- Focused/ targeted instructions in all classrooms
- After school / extended day learning opportunities will be available at all schools for accelerated and remediation learning opportunities
- All schools have built-in intensive tutoring/ interventions that are placed on the schools' daily schedule for enrichment and remediation opportunities
- Signs are posted throughout the buildings for hand washing, physical distancing, and face coverings
- Shared common areas are cleaned and disinfected routinely throughout the day
- Students and teachers practice physical distancing in all classrooms at all times.
- Cafeterias and kitchens are cleaned and sanitized daily.
- All schools have licensed nurses on site
- Each school will have a designated isolation room for students and staff who may get ill.
- Students will participate in athletics. Safety precautions will be put in place.
- Parents are asked to check for coronavirus symptoms before sending students to school.

3. What is the school's contingency plan for scheduling delivery to students should they district or school have to close to an outbreak (i.e., COVID-19, influenza)

- All students will have Chromebook and hotspots
- Utilize Google Classroom to provide online platform for all grades
- Follow the 2021-2022 academic calendar as proposed
- Teachers will provide virtual instruction via Google Classroom
- Meals will be delivered to students
- All state assessments will be administered according to the guidelines of MDE
- All East Tallahatchie School District grading policies and procedures will apply during distance learning.



4. How will the school monitor student progress for both in-person students and students who may be receiving virtual instruction due to an underlying medical condition?

- Assignments- Students will be held accountable for the completion of all assignments
- The assignments will be graded in accordance to the ETSD Grading policy and will be reflected in daily grades, semester averages, and final grades.
- The East Tallahatchie School District will ensure mastery on content for Carnegie credit courses.
- The East Tallahatchie School District will relay students' academic progress through progress reports placed in Active Parent accounts to parents.

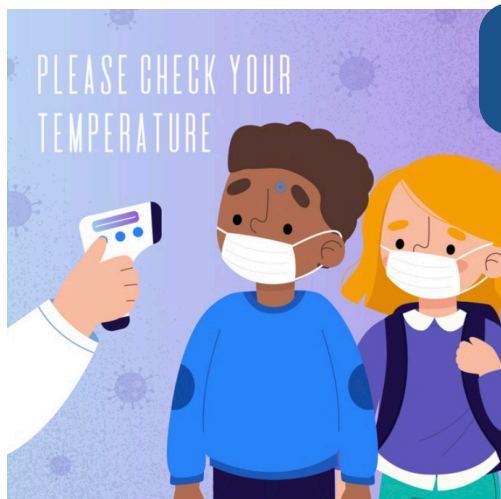
5. How will the school ensure continuity of staff observation and feedback cycles, for both in-person and virtual instruction?

- The East Tallahatchie School District will continue to utilize the Professional Growth Systems Evaluation tool via School Status.
- The district will continue to conduct in-person classroom observations, as well as virtual classroom observations via Google Meet.
- Classroom observations and feedback loops will be conducted daily.

6. How will the school district gather feedback from staff about instructional programming and needed supports?

- The East Tallahatchie School District will solicit feedback from staff via surveys, needs assessments, weekly PLC meetings and focus groups to gauge teacher needs and concerns.
- This data will be leveraged for continuous school improvement.





7. What is the school district's process for student arrival and dismissal?

- Temperature checks will be required for all students upon arrival
- Students will report to designated areas and remain socially distant
- Students will be dismissed in the afternoon by busload according to bus number
- Car riders will have a designated area for parent pick

8. How will the school provide transportation? (include description of district protocols: windows, masks on bus, cleaning schedule, seating arrangement based on loading order / unloading order)

- The ETSD bus fleet will adhere to social distancing guidelines while transporting students. This will reduce the capacity of our buses tremendously.
- Bus capacity will be limited.
- Routes will be modified to accommodate social distancing protocols. Our transportation department will ensure cleaning protocols are conducted daily after routes are completed.
- The district will develop procedures to address procedures for students who have underlying health issues.



9. Where will the school district provide meals to students?

- Breakfast and lunch will be served in the cafeteria during staggered times

10. What is the school districts academic calendars for the 2021-2022 school year?

ETSD 2021 – 2022 Academic Calendar

July '21						
Su	M	Tu	W	Th	F	S
				1	2	3
4	5	6	7	8	9	10
11	12	13	14	15	16	17
18	19	20	21	22	23	24
25	26	27	28	29	30	31

August '21						
Su	M	Tu	W	Th	F	S
1	2	3	4	5	6	7
8	9	10	11	12	13	14
15	16	17	18	19	20	21
22	23	24	25	26	27	28
29	30	31				
				19	22	

September '21						
Su	M	Tu	W	Th	F	S
			1	2	3	4
5	6	7	8	9	10	11
12	13	14	15	16	17	18
19	20	21	22	23	24	25
26	27	28	29	30		
				21	21	

October '21						
Su	M	Tu	W	Th	F	S
					1	2
3	4	5	6	7	8	9
10	11	12	13	14	15	16
17	18	19	20	21	22	23
24	25	26	27	28	29	30
31				19	19	

November '21						
Su	M	Tu	W	Th	F	S
	1	2	3	4	5	6
7	8	9	10	11	12	13
14	15	16	17	18	19	20
21	22	23	24	25	26	27
28	29	30				
				17	17	

December '21						
Su	M	Tu	W	Th	F	S
			1	2	3	4
5	6	7	8	9	10	11
12	13	14	15	16	17	18
19	20	21	22	23	24	25
26	27	28	29	30	31	
				14	14	

January '22						
Su	M	Tu	W	Th	F	S
						1
2	3	4	5	6	7	8
9	10	11	12	13	14	15
16	17	18	19	20	21	22
23	24	25	26	27	28	29
30	31			17	19	

February '22						
Su	M	Tu	W	Th	F	S
		1	2	3	4	5
6	7	8	9	10	11	12
13	14	15	16	17	18	19
20	21	22	23	24	25	26
27	28					
				19	20	

March '22						
Su	M	Tu	W	Th	F	S
		1	2	3	4	5
6	7	8	9	10	11	12
13	14	15	16	17	18	19
20	21	22	23	24	25	26
27	28	29	30	31		
				18	18	

April '22						
Su	M	Tu	W	Th	F	S
					1	2
3	4	5	6	7	8	9
10	11	12	13	14	15	16
17	18	19	20	21	22	23
24	25	26	27	28	29	30
				19	19	

May '22						
Su	M	Tu	W	Th	F	S
1	2	3	4	5	6	7
8	9	10	11	12	13	14
15	16	17	18	19	20	21
22	23	24	25	26	27	28
29	30	31				
				17	18	

June '22						
Su	M	Tu	W	Th	F	S
			1	2	3	4
5	6	7	8	9	10	11
12	13	14	15	16	17	18
19	20	21	22	23	24	25
26	27	28	29	30		

SECTION 3: FAMILY AND COMMUNITY SUPPORT

11. How will the school district provide academic support to families?

- Monthly parent meetings
- Offering tutoring/ afterschool programs for students
- Resources are posted to the district page for access
- School counselors will provide one on one and small group sessions for family assistance

12. How will the school district gather feedback from families of diverse student groups about instructional programming and needed supports?

- We will provide weekly or daily communication as needed via school status, AIM Alert, newsletters, and media to provide information on protective measures and preventative strategies to promote safety.
- We use district and school level websites, social media outlets (Facebook and Instagram), newsletters, brochures, and guidance.
- Need Assessment Survey will be gathered from students, teachers, and parents

Section 4: COMMUNICATIONS



13. How will the school district communicate regularly with families to promote healthy behaviors to reduce spread?

- ETSD Facebook
- ETSD Webpage
- Emails
- Active Parent
- School Status
- Monthly Parent Meetings
- School Newsletters
- SAM Spectra Broadcast

14. How will the school district communicate health safety issues or necessary changes to the district's regular operating schedule?

- ETSD Facebook
- ETSD Webpage
- Emails
- Active Parent
- School Status
- Monthly Parent Meetings
- School Newsletters
- SAM Spectra Broadcast



Section 5: HEALTH AND SAFETY



15. What specific polices has the district adopted regarding CDC safety recommendations?

- The ETSD school district are in the progress of adopting the following policy updates:
 - JCAE - Student Conduct on Virtual Meetings
 - JGA - Pandemic/Emergency

16. How will the district address the social, emotional, mental health, and other needs of students and staff?

- The ETSD will utilize Social-Emotional Learning (SEL) guidelines to provide support for students
- The district will utilize MTSS Behavioral supports
- The district will partner with community mental health providers
- The school nurses will monitor students health needs and will make appropriate referrals

17. What specific steps has the school district taken to address air quality within school facilities?

- Additional learning space will be provided for students. In addition, air cleaning systems will be added to A/C units to provide clean air circulation throughout school buildings
- Updates are in progress from A/C units to HVAC systems in the main buildings on each campus
- Sanitizing Protocols- Daily cleaning and maintaining of facilities will continue in the Leland School District. The District will be undertaking several projects to improve air quality including ventilation upgrades. Hand sanitizer will be available throughout campuses



18. Does the school district plan require daily health screening by families before students come to school?

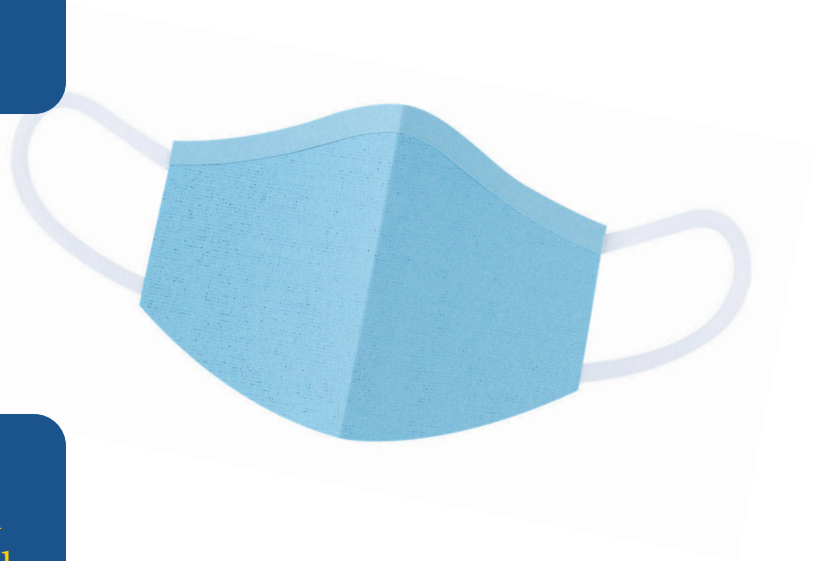
Yes, daily health screening protocols will continue at all school to include questionnaire and temperature checks.

19. Does the school district plan to conduct temperature checks for staff and students upon arrival?

Yes

20. Does the school district plan to require masks of students and adults will being transported and on campus?

Yes



21. If requiring masks of students, what ages/ grade level will be required to wear a mask?

The East Tallahatchie School District will require all students and staff to wear mask.

22. What is the school district's comprehensive plan for regularly cleaning the following areas?

- Buildings, classrooms, and common areas are sanitized and cleaned daily.
- The district utilizes the fog machine to sanitize daily.
- All cafeterias are cleaned and sanitized daily.
- Each school has sanitation stations throughout.

23. How will the school district identify and address the needs of students and staff with underlying health conditions?

- The school district will review the registration information for students to determine if pre-existing conditions exist.
- The district will follow the guidelines issued by the CDC to address the needs of any staff and students with underlying health conditions.
- A school nurse will be housed on the schools' campuses to assist with medical needs of staff and students.
- The East Tallahatchie School District will maintain additional medical staff partnerships to assist with the monitoring of student and staff health and wellness.

24. Who is responsible for overseeing health and safety within the school district?

Nursing staff, administrators, teachers, and staff will oversee and enforce CDC guidelines to ensure that a safe environment exists for all.

25. How does the school district intend to ensure safety of students, staff, and spectators involved in co-curricular and extracurricular activities (athletics, band, choir, etc.)



- The district will participate in the School COVID19 Testing Initiative Program to safely monitor students' health as it relates to COVID19 exposure.
- The district will ensure that all equipment is cleaned and sanitized before usage. To protect the safety of the district's athletics programs, all athletes will follow the Mississippi Activities Association safety guidelines.
- The band and choir will also follow the safe music guidelines for all bands and choirs.



26. How will the school utilize technology to enhance in-person learning and support remote learning for students as needed?

- All schools are presently 1:1, providing a vast array of opportunities for teachers to utilize technology to enhance in-person learning and support remote learning for students as needed.
- Students will utilize Chromebooks or laptops and mobile hotspots or school Internet to supplement in-person learning, increase technological skills, and ultimately improve student achievement.
- Teachers and students will continue to utilize learning management systems, such as Google Classroom and benefit from the use of video platforms, such as Google Meet if and when needed.

27. How will the district identify the professional learning needs of staff in utilizing technology to enhance in-person learning and support remote learning?

The East Tallahatchie School District will collect and analyze data from teacher needs surveys, staff meetings, teacher observations and PLC Meetings to identify and address any technology needs.